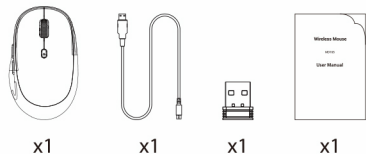


# Wireless Mouse

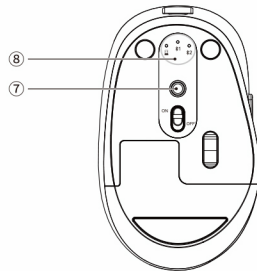
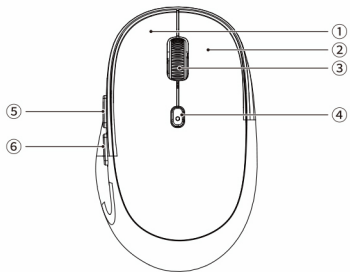
MD165

# User Manual

## Package Contents



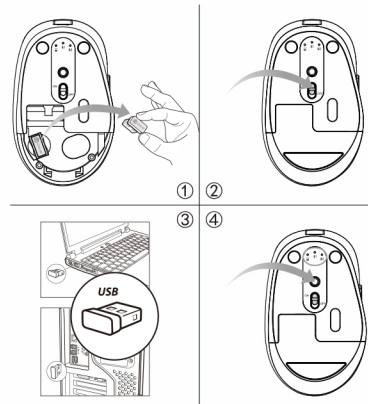
## Diagram



- ① Left Button
  - ② Right Button
  - ③ Scroll Button
  - ④ DPI Button
  - ⑤ Forward Button
  - ⑥ Backward Button
  - ⑦ Connect Button
  - ⑧ 2.4G/Bluetooth 1/Bluetooth 2 Channel Indicator
- \*⑤⑥ are not working for Mac OS.

\*Frequency Band: 2402MHz-2480MHz  
\*Maximum Transmission Power: 0 dBm

## Pairing Instruction



## 2.4G Connection

- ① Move out the USB Receiver from the storage compartment.
- ② Turn on the mouse.
- ③ Plug the USB Receiver into the computer port.
- ④ Click the Connect button to choose the 2.4G Channel.

## Bluetooth Connection

- ① Click the Connect button to choose Bluetooth 1/2 channel.
- ② Hold and press the Connect button for 5s to Bluetooth pairing mode.
- ③ On your device, find the name of "Bluetooth Mouse" and click to connect.

Remark: Because there are 2 bluetooth channels, one is Bluetooth 3.0 version, the other one is Bluetooth 5.0 version. If your device's Bluetooth version is higher than 4.0, please try to connect with the mouse's bluetooth version 5.0.

## Switch among the connected device.

Click the Connect button to switch among connect devices.

NOTE: This equipment has been tested and found to comply with the limits for a Class B digital device, pursuant to part 15 of the FCC Rules. These limits are designed to provide reasonable protection against harmful interference in a residential installation. This equipment generates uses and can radiate radio frequency energy and, if not installed and used in accordance with the instructions, may cause harmful interference to radio communications. However, there is no guarantee that interference will not occur in a particular installation. If this equipment does cause harmful interference to radio or television reception, which can be determined by turning the equipment off and on, the user is encouraged to try to correct the interference by one or more of the following measures:

- Reorient or relocate the receiving antenna.
- Increase the separation between the equipment and receiver.
- Connect the equipment into an outlet on a circuit different from that to which the receiver is connected.
- Consult the dealer or an experienced radio/TV technician for help

Changes or modifications not expressly approved by the party responsible for compliance could void the user's authority to operate the equipment.

This device complies with Part 15 of the FCC Rules. Operation is subject to the following two conditions:  
(1) this device may not cause harmful interference, and  
(2) this device must accept any interference received, including interference that may cause undesired operation.