

尺寸: 105x148.5mm 材质: 超感米100g 折页方式: 骑马钉

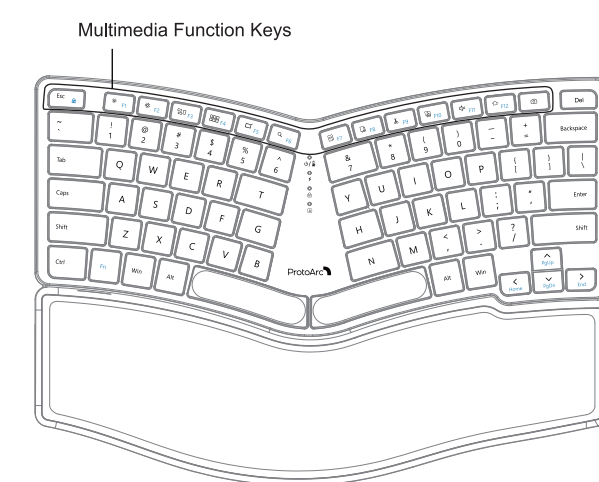
英语

User Manual

Wireless keyboard

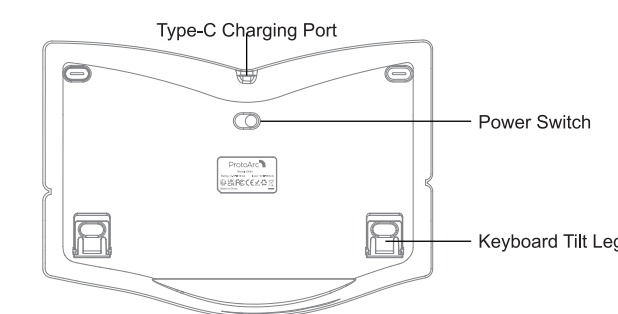
HW391

Product Features



- Power/Low Battery Red Indicator Light
- Charging Indicator Light
- FN Lock White Indicator Light
- Caps On/Off White Indicator Light

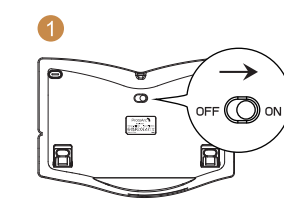
- 1 -



Note that the receiver is in the packaging box.

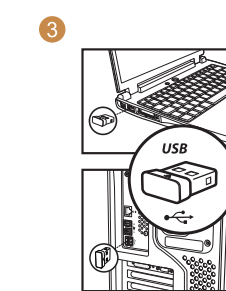
- 2 -

2.4G USB Connection



1. Switch the keyboard ON.

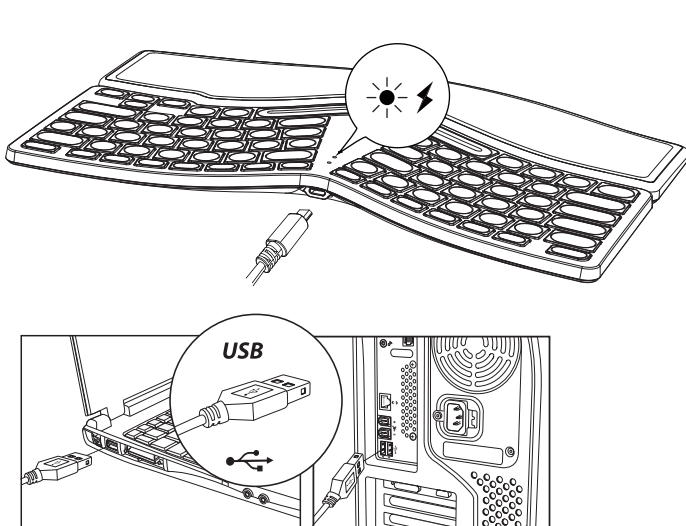
2. Take out the USB receiver from the bottom of the number pad.



3. Plug the USB receiver into the USB port of the computer, then the keyboard and number pad can work normally.

- 3 -

Charging Guide



1. When the battery is low, the low battery red indicator starts flashing until the keyboard/number pad turns off.
 2. Plug the Type-C port into the keyboard/number pad and the USB-A port into the computer to charge. The red indicator light stays on while charging.
 3. It takes 2-3 hours to fully charge. The indicator light turns green when fully charged.

- 4 -

Multimedia Functions

Keys	Functions	Keys	Functions
☼	Brightness -	☼	Brightness +
☐	Window Switching	☐	Multi-window Preview
☐	Show Desktop	🔍	Search
☐	Select All	📄	Copy
✂	Cut	📄	Paste
🔇	Mute	🏠	Home
🖼	Screenshot		
🔒	Press FN+ESC to turn ON/OFF the FN function		

Note: The FN function is for alternate commands (F1-F12 & multimedia functions are dual-use keys).

Sleep Mode

- When the keyboard and number pad is not used for more than 10 minutes, it will automatically enter into sleep mode and the indicator light will turn off.
- When using the keyboard and number pad again, just press any key, the keyboard will wake up within 2 seconds, and the lights come back on and the keyboard starts working.

- 5 -

Product Parameters

Main Keyboard:

System Compatibility	Windows 7~11
Battery Capacity	280mAh
Working Voltage	3.7V
Working Current	≤2mA
Standby Current	≤1mA
Sleeping Current	≤0.3mA
Standby Time	≥365 Days
Working Time	180 Hours
Charging Time	≈2 Hours
Wake up Way	Press any key
Keyboard Dimension	332*230*32mm

- 6 -

NOTE:

This equipment has been tested and found to comply with the limits for a Class B digital device, pursuant to part 15 of the FCC Rules. These limits are designed to provide reasonable protection against harmful interference in a residential installation. This equipment generates, uses and can radiate radio frequency energy and, if not installed and used in accordance with the instructions, may cause harmful interference to radio communications. However, there is no guarantee that interference will not occur in a particular installation. If this equipment does cause harmful interference to radio or television reception, which can be determined by turning the equipment off and on, the user is encouraged to try to correct the interference by one or more of the following measures:

- Reorient or relocate the receiving antenna.
- Increase the separation between the equipment and receiver.
- Connect the equipment into an outlet on a circuit different from that to which the receiver is connected.
- Consult the dealer or an experienced radio/TV technician for help.

Changes or modifications not expressly approved by the party responsible for compliance could void the user's authority to operate the equipment.

This device complies with Part 15 of the FCC Rules. Operation is subject to the following two conditions:
 (1) This device may not cause harmful interference, and (2) this device must accept any interference received, including interference that may cause undesired operation.

- 7 -