

### IMPORTANT SAFETY INSTRUCTIONS

BEFORE USING THIS PRODUCT READ ALL INSTRUCTIONS AND WARNINGS IN THIS MANUAL.

**WARNING**  
To reduce the risk of burns, fire, electric shock, or injury to persons:  
1. This product is designed for use with dogs where training is desired. Do not use this product for anything other than its intended purpose.  
2. The specific temperament of your dog may not work with this product. Do not use this product if your dog has any medical conditions. Do not use this product if your dog is aggressive or if your dog is prone to aggressive behavior. Aggressive dogs can cause severe injury and even death to their owner and others. If you are unsure whether this is appropriate for your dog, please consult your veterinarian, certified trainer, or contact DogCare customer support.  
3. We recommend that you not use this product if your dog is under 6 months of age or less than 8 pounds.  
4. NOT A TOY. This product is not intended for use by, on, or near young children, invalids or infirm persons with reduced physical, sensory, or reasoning capabilities, or lack of experience and knowledge, unless they have been given supervision or instruction concerning use of the product by a person responsible for their safety. To reduce the risk of injury, close supervision is necessary when the product is used near children.  
5. Do not operate the product if it has a damaged electrical power cord or plug, or if it is malfunctioning or has been damaged. Contact DogCare customer support for further instructions.  
6. Contact DogCare customer support to replace or recycle the battery. Do not attempt to open the product to remove or replace the built-in battery. Do not incinerate, puncture, deform, or short-circuit. The battery used in this product may present a risk of chemical burn if misused.  
7. Risk of explosion if battery is replaced by an incorrect type. Do not attempt to cut into or pry open the battery, dispose of in fire, or expose to water. Dispose of spent batteries according to the regulations in your area.

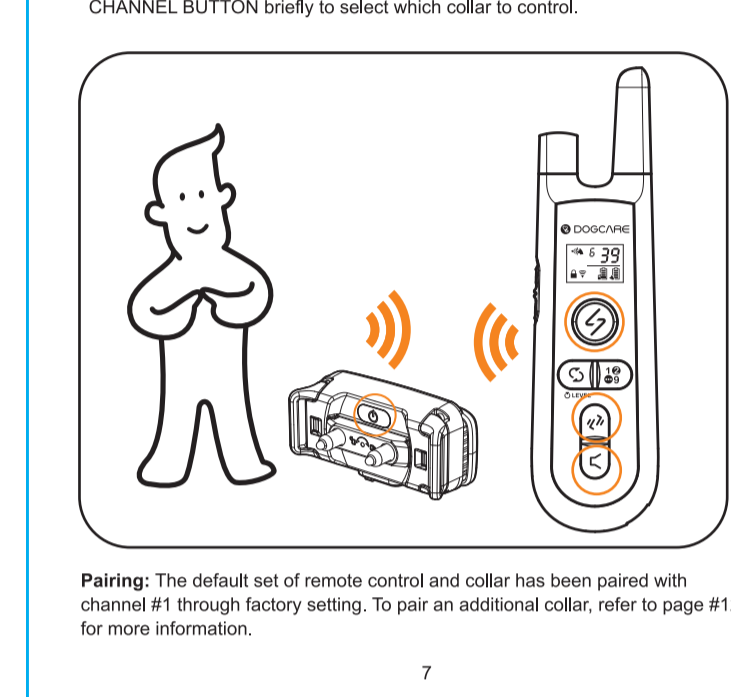
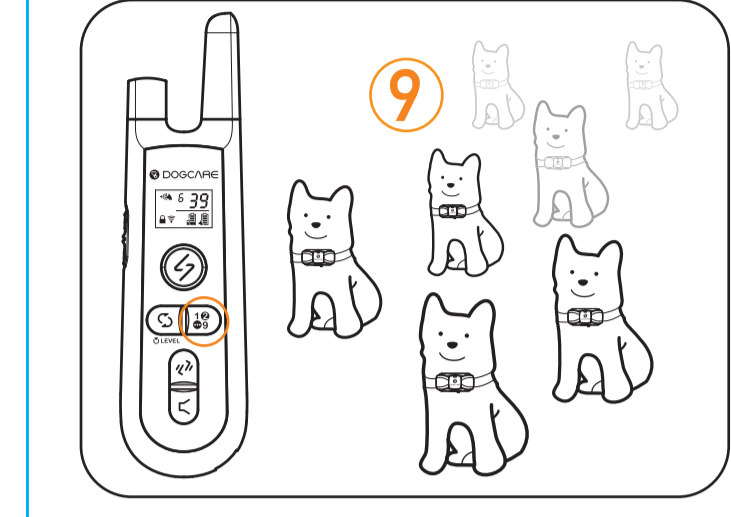
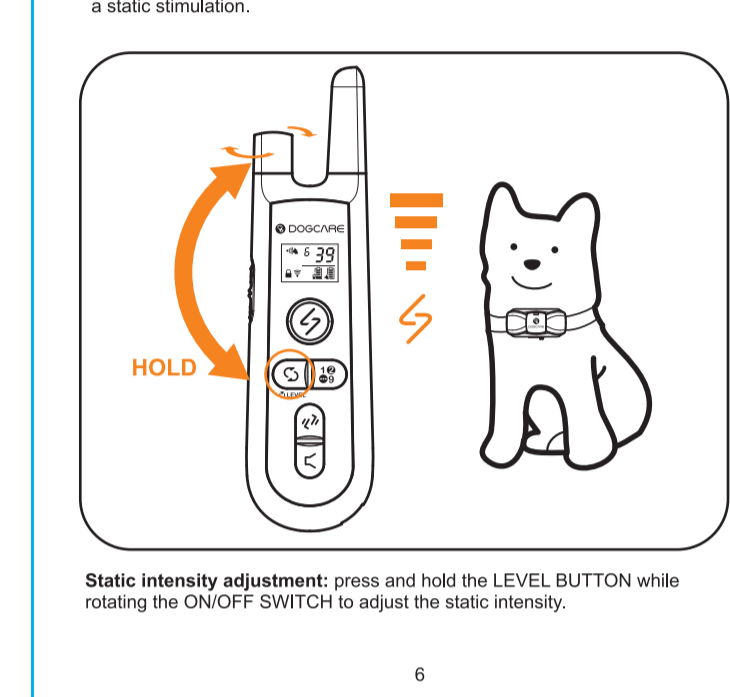
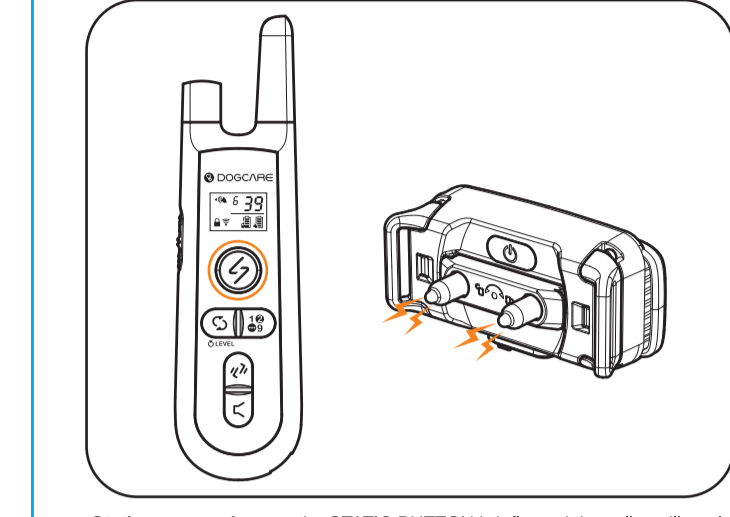
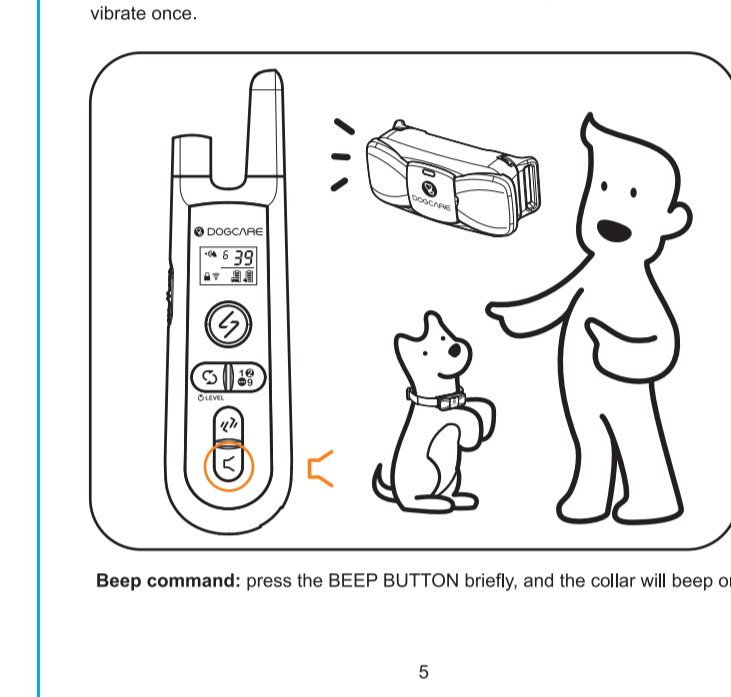
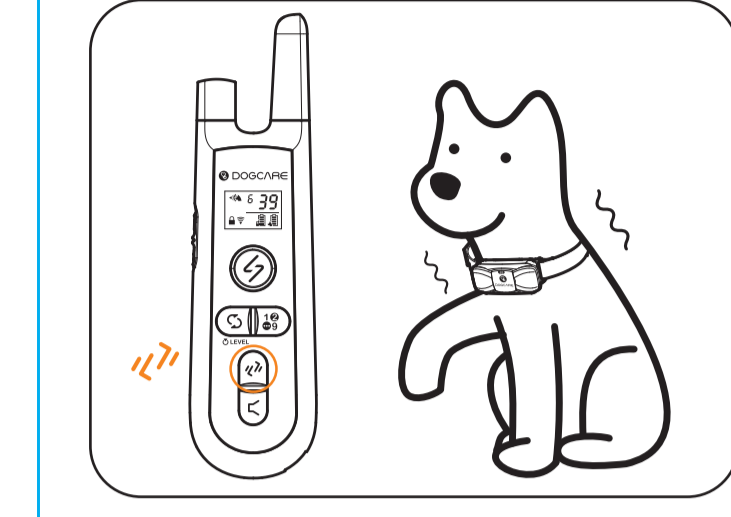
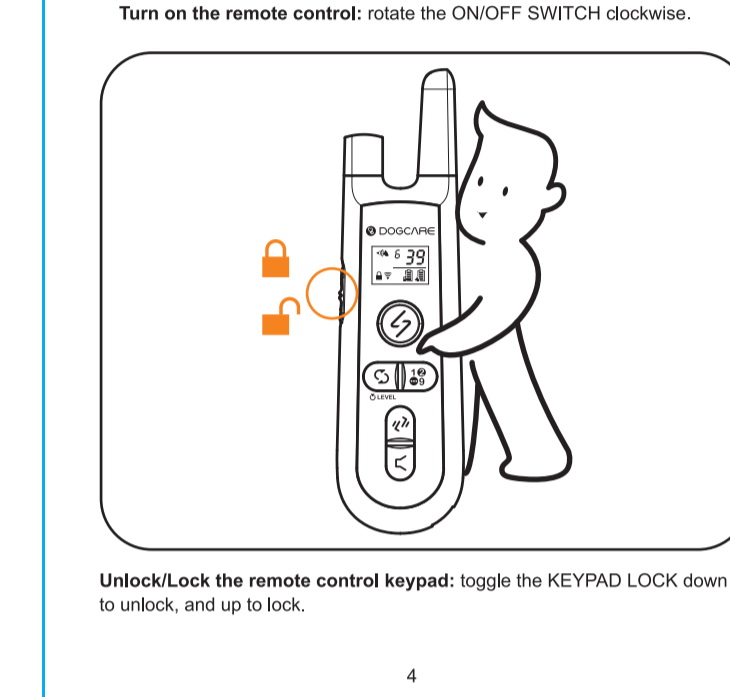
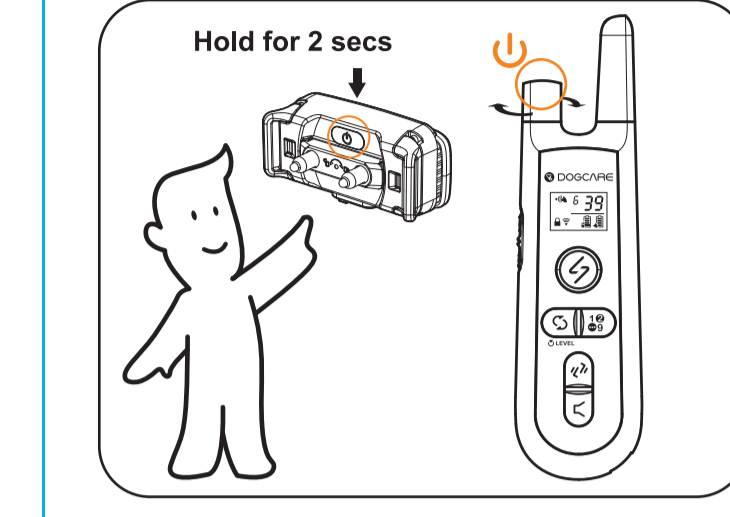
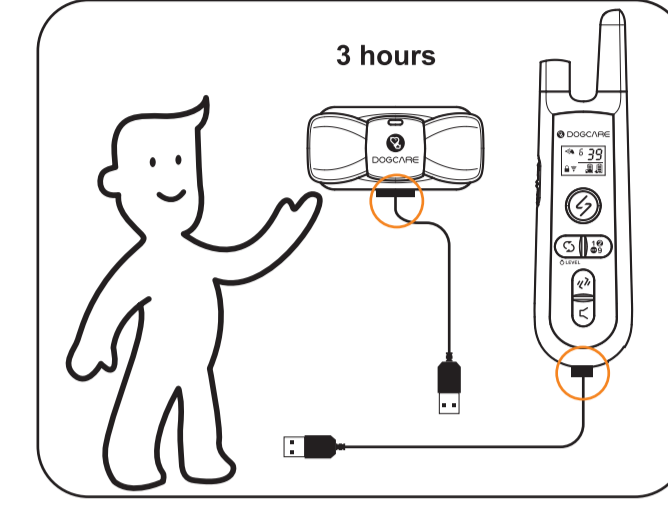
**CAUTION**  
1. The product is designed to get your dog's attention, not to punish. However, the initial stimulation may startle your dog. Do not leave your dog alone when using the product for the first time.  
2. Do not connect a lead/leash, tags, or other items to the collar. It will cause excessive pressure on the CONTACT POINTS. Attach a lead/leash and/or tag to a separate regular collar or a harness. When using a separate collar, make sure the extra collar does not put pressure on the CONTACT POINTS.  
3. Avoid leaving the collar on your dog for more than 12 hours per day.  
4. When possible, reposition the collar on the dog's neck every one to two hours.  
5. Check the fit to prevent excessive pressure. Follow the instructions in this manual. Do not make the collar any tighter than is required for good contact. A collar that is too tight will increase the risk of pressure necrosis in the contact area.

### READ AND SAVE THESE INSTRUCTIONS

#### QUICK START

**Silicone**  
Your upgraded dog training system features a silicone CONTACT POINTS module. The CONTACT POINTS are made entirely of flexible conductive silicone to ensure a more comfortable and safe experience for your dog.

The CONTACT POINTS module is detachable for replacement. Before you remove or install the module, make sure the collar is turned off—press and hold the ON/OFF BUTTON for 2 seconds to turn off the collar. To install the module, align the tab on the bottom of the module with the hole on the receiver unit, then rotate the module clockwise until you hear a click.



### COLLAR STATIC STIMULATION QUICK GUIDE

When wearing the collar, it is most suitable if one finger can be inserted under it. Too tight is not good for your dog, but too loose will dull the static function for the CONTACT POINTS cannot touch your dog's skin.

**Not Feeling the Static? Try These Solutions**

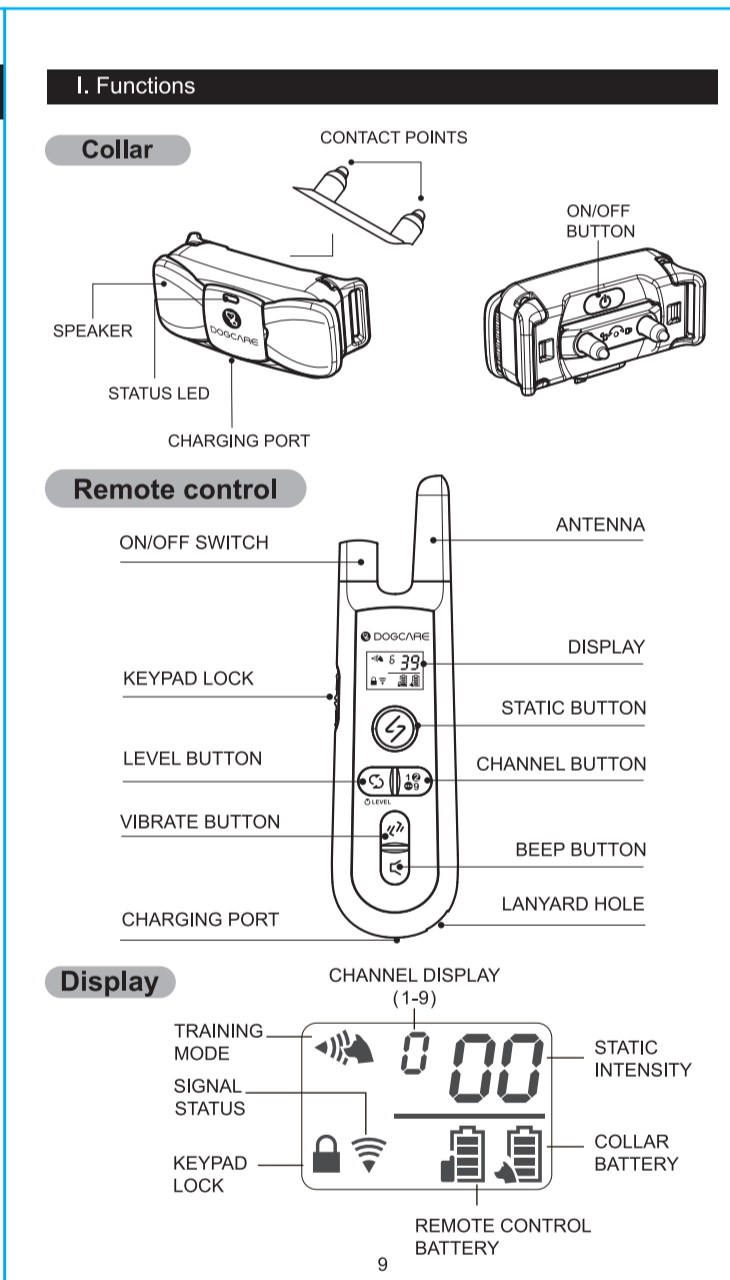
If your dog has thick fur, please separate the fur apart so that both CONTACT POINTS can touch the skin.

Make sure the CONTACT POINTS module is properly attached to the collar and has good contact. To attach the module, rotate it clockwise until you hear a click.

Water can help conductivity. If you spray some water around the CONTACT POINTS, the static function can work more effectively.

One last thing you can try is to shear the fur where both CONTACT POINTS are touched.

**Note:**  
1. Only when both CONTACT POINTS are simultaneously touched, the static will work.  
2. If the collar has a delayed reaction or fails to sync up even in a short distance, make sure there is no strong signal interference in your surroundings. The remote's range could be affected by obstacles, electromagnetic field, or even stormy weather.  
3. If you find the collar not working, please check whether you have pushed up the KEYPAD LOCK which is on the left side of the remote.  
4. The sensitivity to static depends on your dog's size, weight, amount of fur, and even skin condition.



### II. Setting up

1. Charge the devices for at least 3 hours respectively.
  - a. **Remote control:** charge the device until the REMOTE CONTROL BATTERY on the DISPLAY indicates full bars.
  - b. **Collar:** charge the device until the red STATUS LED turns green. When the red light flashes, it indicates low battery.

**Static intensity adjustment:** press and hold the LEVEL BUTTON while rotating the ON/OFF SWITCH to adjust the static intensity.

Adjust the static intensity on an individual basis. The sensitivity to static depends on your dog's size, weight, amount of fur, and even skin condition.

**III. Wearing the Collar**

Make sure that the collar is powered off.

Have your dog stand in a balanced position on a flat, even surface.

Put the strap over your dog's neck, centering the collar underneath its neck and making sure that the DogCare logo is upright facing you.

Tighten the strap so that it fits snugly on your dog's neck and should not be able to rotate around the neck. The tightness is at most fit if one finger can be inserted underneath.

Wiggle the collar to work the CONTACT POINTS through the dog's coat.  
**NOTE:** The CONTACT POINTS must have contact with the dog's skin to be effective. If your dog has thick fur, please separate the fur at the CONTACT POINTS with a comb to enable them to reach the skin.

### IV. Training Modes

When you are satisfied with the fit of the collar, you may want to adjust the excess strap length. After removing the collar, you can put the strap's end back through the buckle, or trim away excess strap length and seal the strap's end with a lighter or candle flame.

**NOTE:** remove the collar first.

In case the collar strap is damaged, you can replace the strap. Insert a pointed tool into the slot and push to detach the strap. Visit DogCare's Amazon store to find out more about the replacement collar strap.

1. **Vibration Mode:** Press the VIBRATE BUTTON, and the collar will vibrate once; hold the button and the vibration persists.
2. **Beep Mode:** Press the BEEP BUTTON, and the collar will give a "beep" sound; hold t button, and the "beep" sound persists.
3. **Static Mode:** Press the STATIC BUTTON, and the collar will release a static stimulation.

Do not hold the static button as it is not recommended to have prolonged static stimulation to your dog (the static will be cut off automatically in 4 seconds to prevent unintentional stimulation).

### IV. Switching Channel:

Press the CHANNEL BUTTON to choose which collar to control when paired with multiple collars.

### V. Pairing

\*The default set is already paired by factory setting and ready to use.

1. Ensure the collar is turned off. Hold the ON/OFF BUTTON of the collar for 5 seconds until the STATUS LED on the collar flashes in green.
2. Press and hold the CHANNEL BUTTON for 3 seconds. The collar will vibrate and beep which indicates the pairing is completed. You will see "1\*" (or subsequent number) in the CHANNEL DISPLAY when the pairing is successful.

**Adding multiple collars:**  
After confirming the collar is turned off, hold the ON/OFF BUTTON of the collar for 3 seconds, release the button after the STATUS LED on the collar flashes in green. Press and hold the CHANNEL BUTTON on the remote for 5 seconds (repeat step 1 and 2). The CHANNEL DISPLAY will show the subsequent number of the new collar. **Note:** connect only one collar at a time. Do not connect all simultaneously, or the remote will pair all collars into a single channel.

**Removing all paired collars:**  
Press and hold the LEVEL BUTTON and the BEEP BUTTON simultaneously for 5 seconds. Make sure all collars to be removed have sufficient power so that the collars can receive the remove command.

### VI. Trouble Shooting

1. **Remote/collar runs out of power quickly**
  - Make sure the charger and the remote/collar are securely connected.
  - Charge the device for 3 hours or above.
2. **Remote does not respond**
  - Recharge the remote.
  - Check the KEYPAD LOCK, and unlock the remote.
  - Pair the remote and collar again.
3. **Collar does not respond**
  - Make sure the collar has been paired.
  - Check the remote, making sure the remote and collar have sufficient power.

Check the remote, making sure both the remote and collar have sufficient power.

**4. Training system has no effect on my dog**  
Make sure the collar has been turned on, and the CONTACT POINTS are placed snugly against your dog's skin.  
Check if you are using the static mode with the non-static CONTACT POINTS module installed on the collar.  
Try increasing the static level.  
Training mode fails to sync up even in a very short distance  
Make sure there is no strong signal interference in your surroundings. The remote's range could fluctuate subjects to obstacles, electromagnetic field, or even stormy weather.

**6. Collar beeps, vibrates or applies static stimulation by itself occasionally or constantly**  
Make sure no button of the remote has been pressed or gotten stuck.  
Pair the collar with the remote once again.

**Please feel free to contact our support team via**  
+1-833-220-1900 dogcare@afferservice.vip  
24/7 live chat—scan the QR code to access

### VII. Training Tips

1. The device is used for training dogs only; please do not use it for any other purposes.
2. Do not use the device on dogs aged below 6-month, old, pregnant, easily frightened, aggressive, in heat, or in inferior health conditions.
3. Use verbal commands first, and supplement with corrective stimulus only as needed. Be consistent with your verbal commands; use the same word every time. Work with your pet on one behavior at a time to avoid confusion and frustration. Reward your dog with food/treats will usually help to achieve the best result.
4. Use as little stimulus as possible and only to reinforce verbal commands when necessary. Do not overcorrect your dog.
5. For example, use the beep sound as warning by pressing the BEEP BUTTON. The dog will become conditioned to the beep preceding the corrective stimulus and will soon learn to recognize the beep as a warning along with your verbal command.
6. Do not rely on this product solely to train your dog. Some dogs will not respond to this product. We cannot guarantee the effectiveness of this or any trainer on your dog.

★ If your dog shows signs of growling, snarling, biting, or aggression while using the collar, discontinue use immediately and contact a professional trainer for advice.

### VIII. Safety Guidelines

1. It is strictly prohibited to disassemble the collar in any situation. Doing so will likely compromise the waterproof function and thus voiding the product warranty.
2. To guarantee the normal diving function, please insert the waterproof rubber charging lid in place.
3. Please use the remote control and the collar from the complete set. Do not use other product to match with the collar.
4. If you want to test the product, please use professional testing apparatus. Do not test with hands, so as to avoid accidental injury.
5. If find water at the charging port, please wipe it dry before charging.
6. The collar is not a regular traction collar and not recommended to attach a leash to walk your dog. Doing so during pulling may hurt the dog due to protruding electrodes on the collar.
7. Do not put the collar on for over 12 hours, as it may cause rashes or discomfort to your dog's skin.

### IX. Terms of Use and Limitation of Liability

1. Use of this product means you accept all the terms and conditions.
2. This product is a professional dog training device. You are not recommended to use this product if your dog is clever and less than 8 pounds in weight. If you're not sure whether the product is suitable for your pet dog, please consult the professional handler or contact us.
3. This product is a professional dog training device and cannot be used for other purposes. Please do not violate local laws in using this product.
4. We are not responsible for any direct or indirect damages caused by use or misuse of this product; all risks in using this product are the responsibility of the user.
5. Please contact the dealer for parts warranty, goods return or exchange. We provide technical support only.
6. We reserve the right to change the terms, conditions and notices of this product as offered.

### X. FCC Compliance

This device complies with part 15 of the FCC Rules. Operation is subject to the following two conditions: (1) this device may not cause harmful interference, and (2) this device must accept any interference received, including interference that may cause undesired operation. This equipment has been tested and found to comply with the limits for a Class B digital device, pursuant to part 15 of the FCC Rules. These limits are designed to provide reasonable protection against harmful interference in a residential installation. This equipment generates, uses and can radiate radio frequency energy and, if not installed and used in accordance with the instructions, may cause harmful interference to radio communications. However, there is no guarantee that interference will not occur in a particular installation. If this equipment does cause harmful interference to radio or television reception, which can be determined by turning the equipment off and on, the user is encouraged to try to correct the interference by one or more of the following measures:  
• Reorient or relocate the receiving antenna.  
• Increase the separation between the equipment and receiver.  
• Connect the equipment into an outlet on a circuit different from that to which the receiver is connected.  
• Consult the dealer or an experienced radio/TV technician for help.  
This product does not contain any user-serviceable parts. Repairs should only be made by an authorized DogCare service center. Unauthorized repairs or modifications could result in permanent damage to the equipment, and void your warranty and your authority to operate this device under Part 15 regulations.  
\*This equipment complies with FCC radiation exposure limits set forth for an uncontrolled environment. This equipment should be installed and operated with minimum distance 10cm between the radiator and your body.

### XI. Product Specifications

Model	TC01 PRO
Collar adjustable range	9.45"-27.5"
Water rating	Collar: IP67 waterproof Remote: non-waterproof, keep away from water
Battery	Collar: 235mAh Remote: 235mAh
Charging voltage	Collar: DC 5V/500mA Remote: DC 5V/500mA
Charging time	3 hours
Charging interface	Micro USB
Operation environment	32°F-104°F, <95% RH
Estimated standby time	Collar: 15 days Remote: 45 days
Signal range	1,000 ft

		版本	ECN No.	变更内容	物料类别 <input type="checkbox"/> 外箱 <input type="checkbox"/> 彩盒 <input checked="" type="checkbox"/> 说明书 <input type="checkbox"/> 包装袋 <input type="checkbox"/> 贴标 <input type="checkbox"/> 其它 颜色说明 	技术说明 展开尺寸mm 800 (W)x170(H)	材质说明 80g书纸	印刷工艺及后期 双面印刷	比例 1:1
产品型号	TC01 PRO	A	N/A	初版发行					
产品名称	训犬器								
物料名称	纸质英文说明书								
物料编码									
图号									
设计 审核 会签		项目负责人 项目总负责人 研发负责人		共1页 第1页					