

Antenna
Test Report

PHY6222 Antenna Spec

Version 1.0.0

Date: 2021-06-23

NO: 000000001

Powered by



Intelligence
Inside

Product Name:	PHY6222
Antenna Type:	Onboard antenna
Writer:	Yingyun Tong
Maximum	Gain: 1.09 dBi
	Efficiency:44.98%

Content

1. General Description	2
2. Technical Information	3
3. Test Standards	3
4. Test Item	4
5. Test Photo	4
Appendix A S11/VSWR.....	5
Appendix B Gain and Efficiency	6
Appendix C Radiation Pattern(1D and 3D).....	7
Appendix D Test Setup Photo	9
Appendix E EUT Photo	10

1. General Description

EUT Name	PHY6222 Antenna
Wireless type	BLE
Antenna Type	Onboard antenna
Dimensions	Appendix A

2. Technical Information

Frequency Range	2402MHz~2480MHz
Test Frequency	2400,2410.....2500MHz

3. Test Standards

Identity	Document Title
IEEE 149-1979	IEEE Standard Test Procedures for Antennas

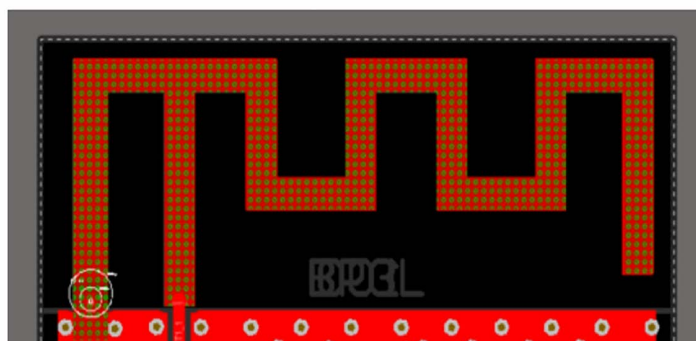
4. Test Item

Report Section	Description
Appendix B	S11/VSWR
Appendix C	Gain and Efficiency
Appendix D	Radiation Pattern (3D)

5. Test Photo

Report Section	Description
Appendix E	Test Setup Photo

Appendix A Antenna Dimension



Size:
L:15.5mm
W:6.0mm

Appendix B S11/VSWR

Frequency (MHz)	2400	2450	2500
Return Loss	-16.0	-9.2	-5.12

Appendix C Gain and Efficiency

Frequency (MHz)	Efficiency(%)	Gain (dBi)
2400	31.26	-0.07
2410	33.57	0.11
2420	34.28	0.15

2430	24.12	0.06
2440	33.57	0.02
2450	32.36	-0.15
2460	34.83	0.34
2470	37.41	0.8
2480	41.02	1.09
2490	42.27	1.28
2500	39.63	0.91

Appendix D Radiation Pattern(3D)

