

Antenna Test Lab Co. Summary

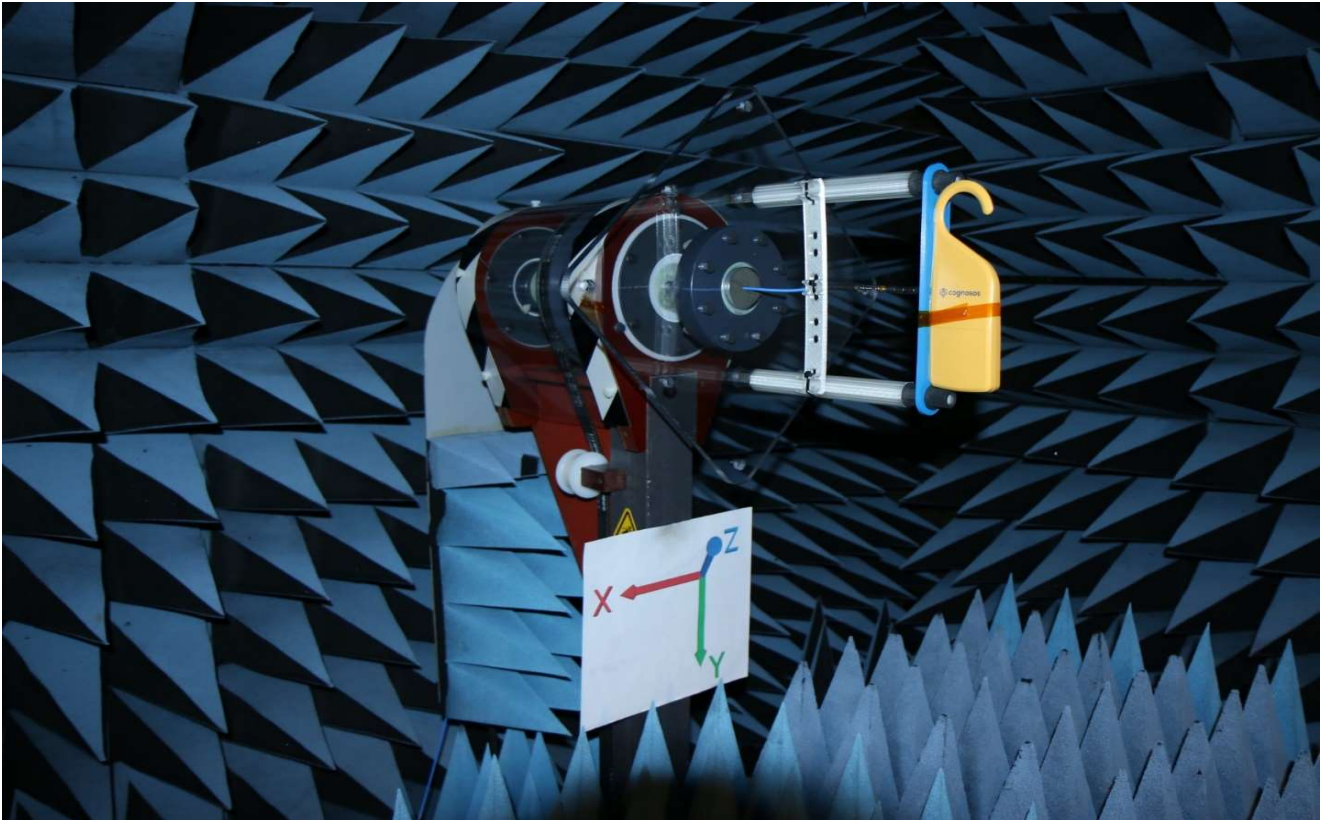
www.AntennaTestLab.com

Test Date	Wednesday, April 20, 2022
Tested By:	Glenn Robb (919) 200-0292 Info@AntennaTestLab.com
Sample Description	See file name for model number and test configuration

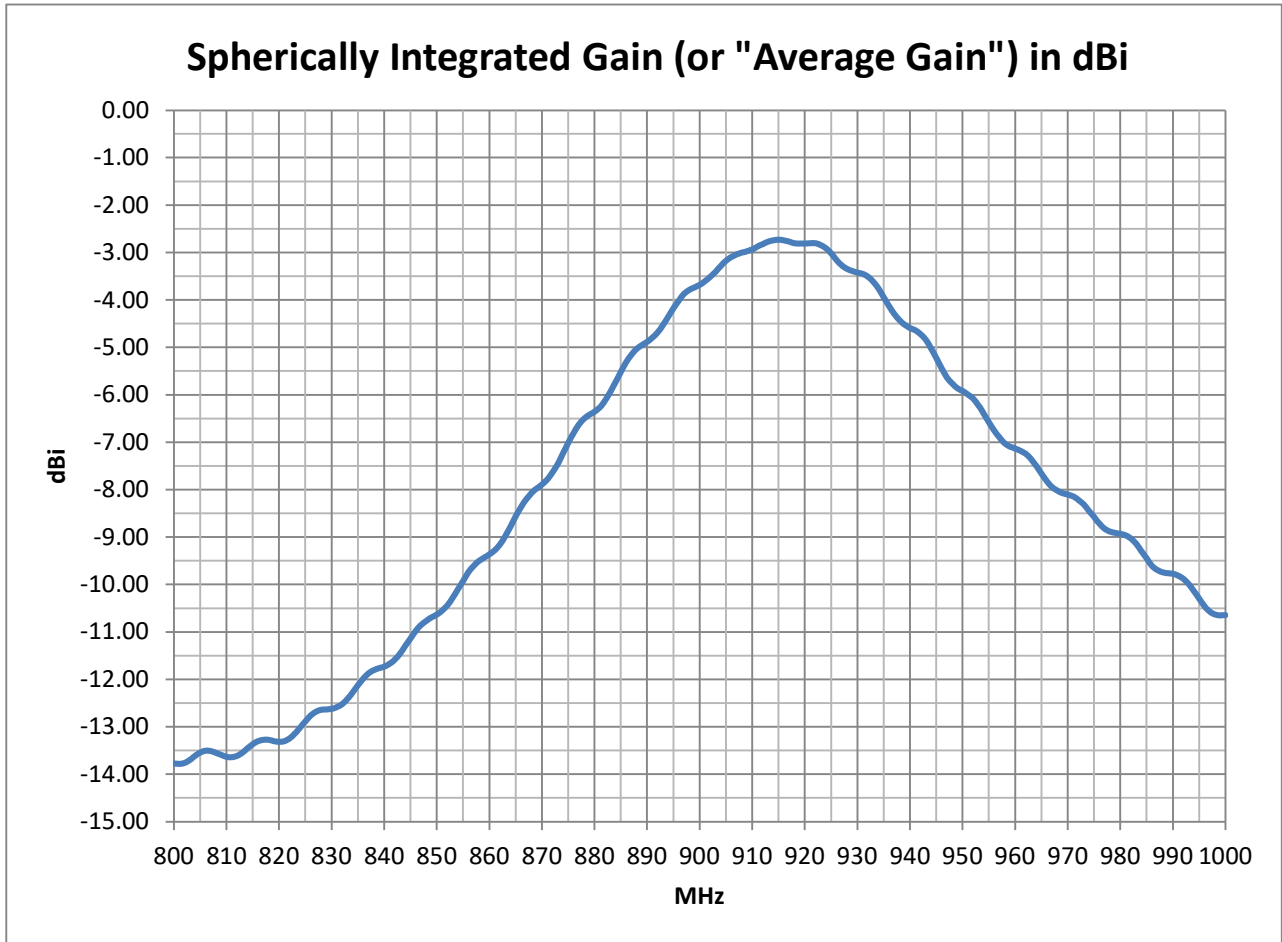
Axis	Antenna Under Test Orientation Notes (See Coordinate Diagram Tab And Separate Setup Photos)
+Z Axis is Theta= 0 & Phi=any	
-Z Axis is Theta= 180 & Phi=any	Axis of feed line
+X axis is Theta=90 & Phi=0	
-X axis is Theta=90 & Phi=180	
+Y axis is Theta=90 & Phi=90	
-Y axis is Theta=90 & Phi=270	
Other Coordinate Notes, 3-Axis Cuts in Spherical Coordinates ...	
XZ Cut (Turntable) is Theta=0-360 & Phi=0, or Theta=0-180 & Phi=0 then Theta=180-0 & Phi=180	
YZ Cut is Theta=0-360 & Phi=90, or Theta=0-180 & Phi=90 then Theta=180-0 & Phi=270	
XY Cut is Theta=90 & Phi=0-360	

Notes And Observations
Customers may download 3-Dimensional pattern visualization software (use on Theta-Ring.TXT file) from
http://antennatestlab.com/antenna-education-tutorials/plotting

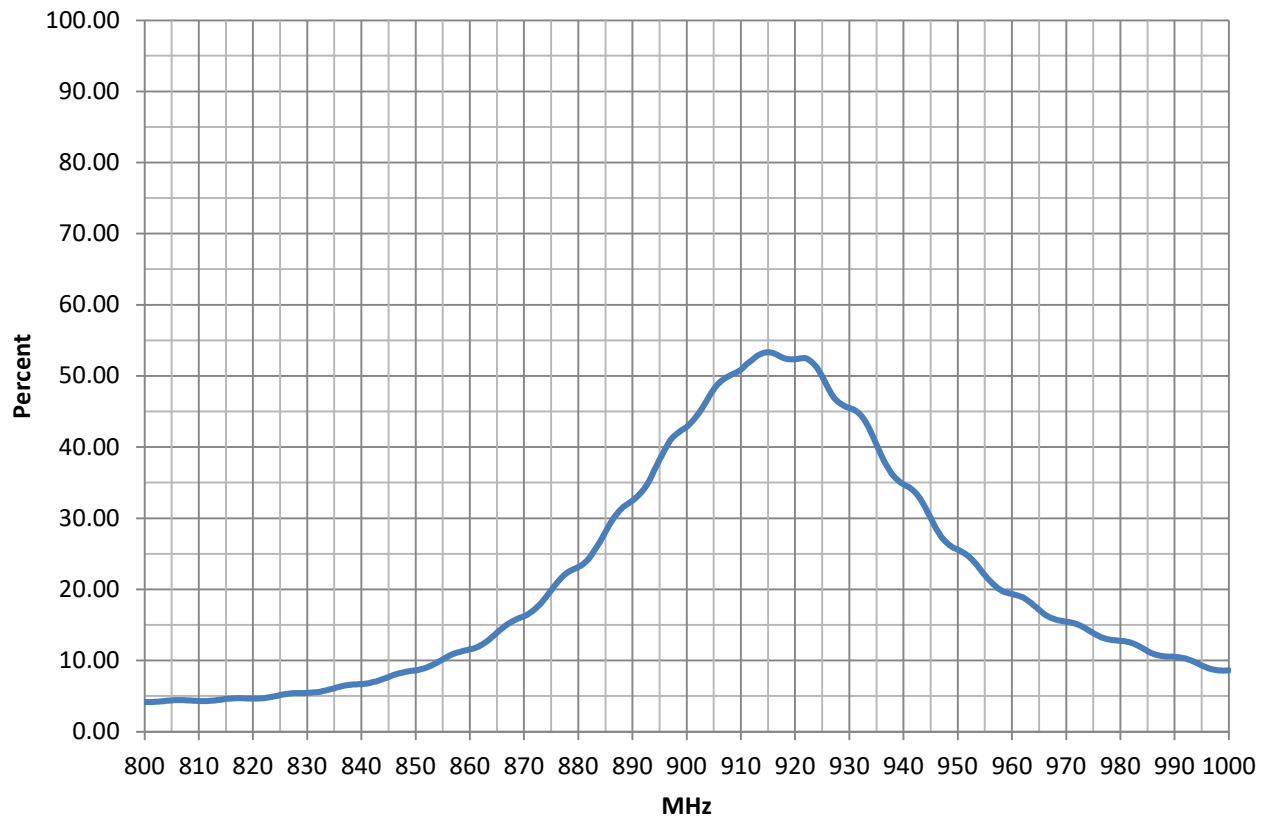
Test Setup Picture



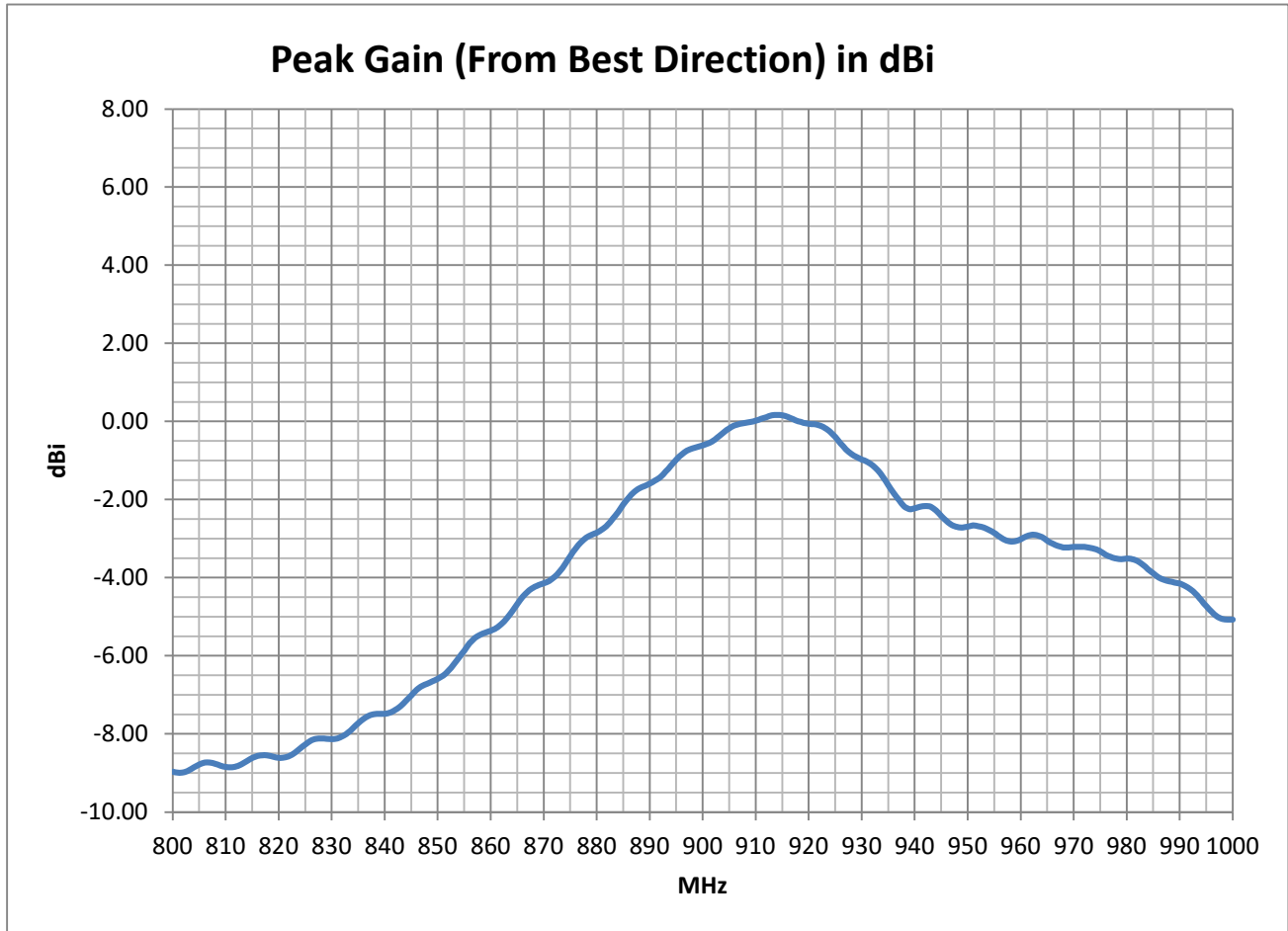
Efficiency Graph



Radiation Efficiency in % (Calculated From Average Gain)



Peak Gain Graph



Note: all tabulated data are detailed in part 2 of this exhibit