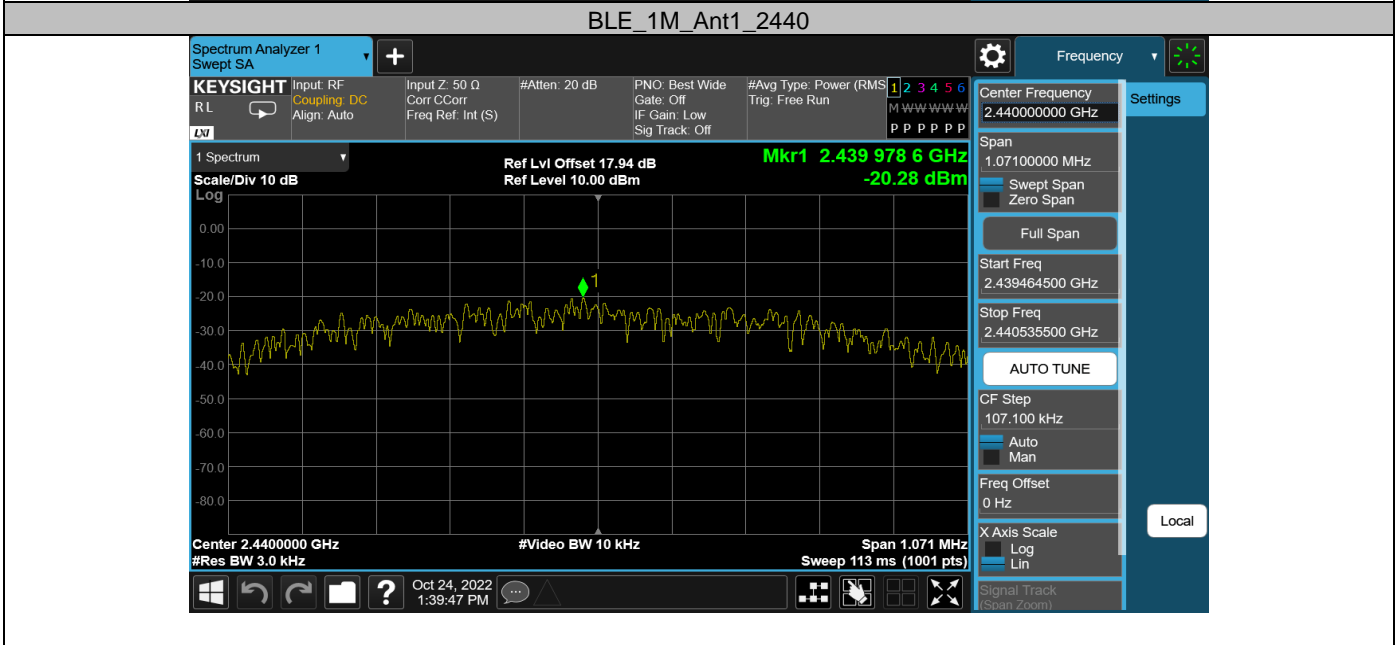
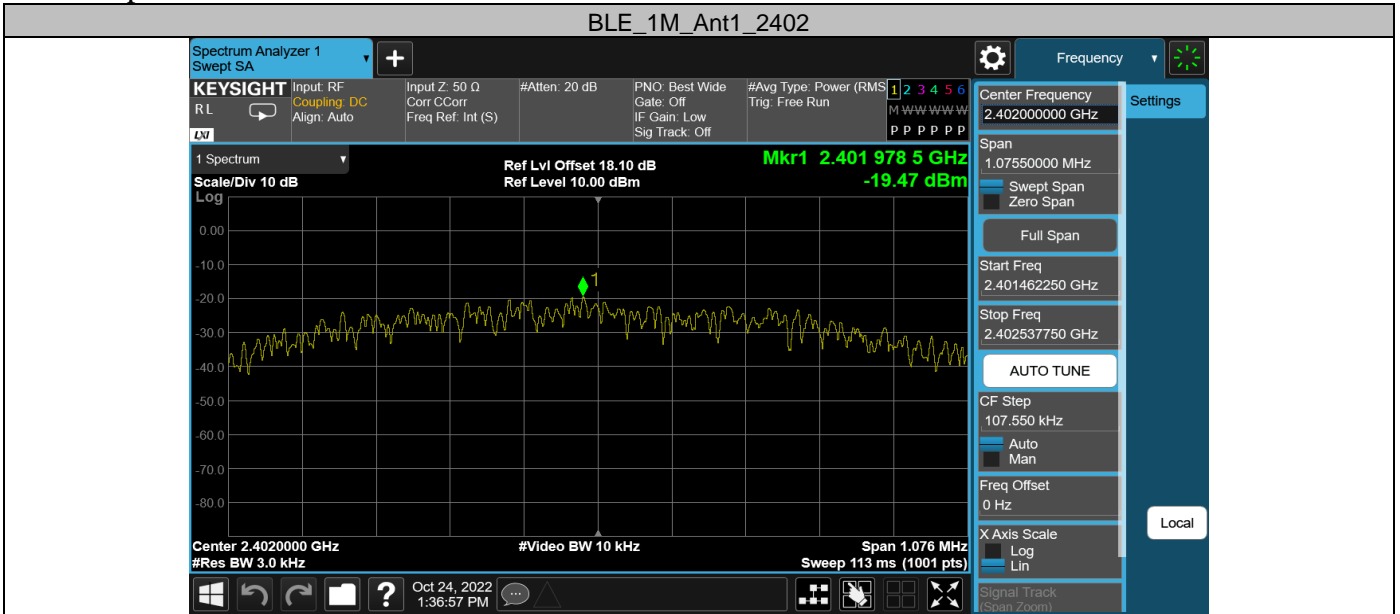
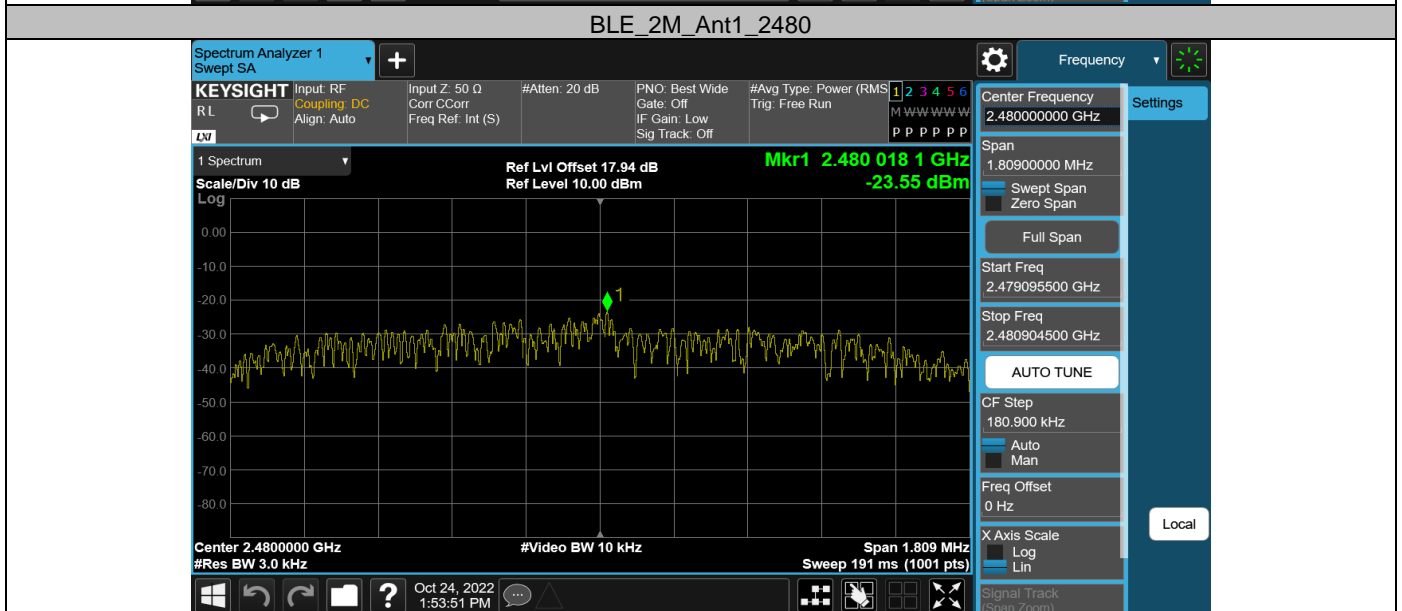
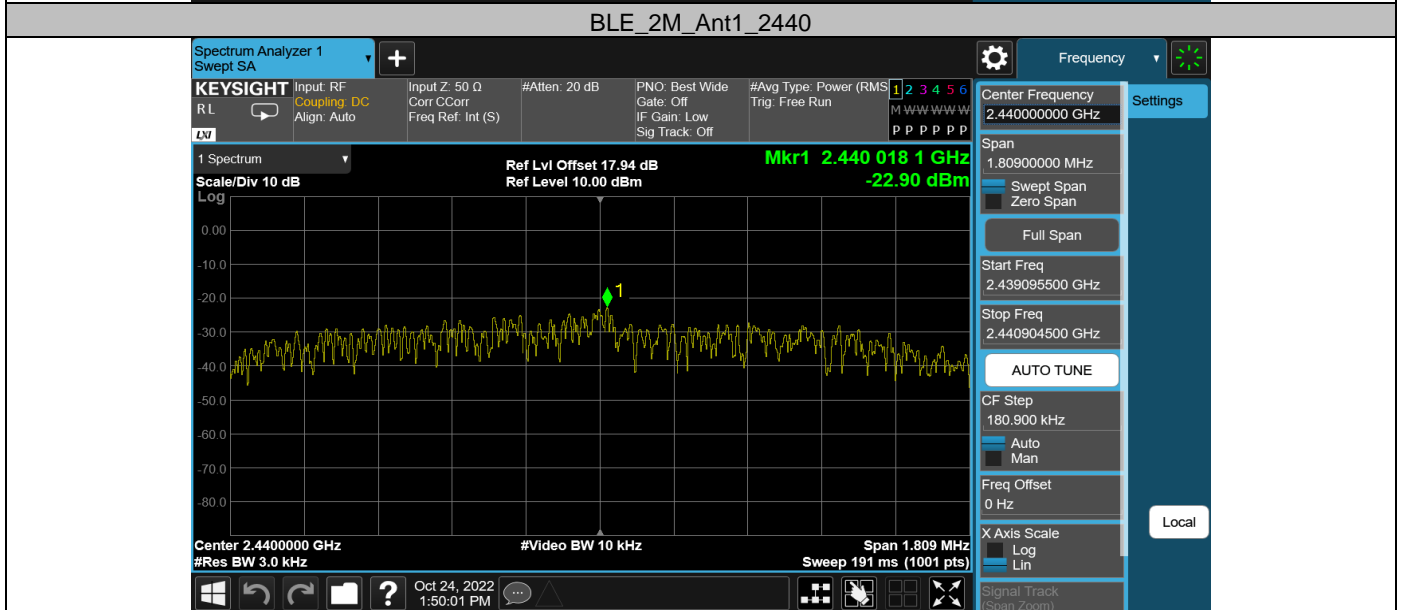
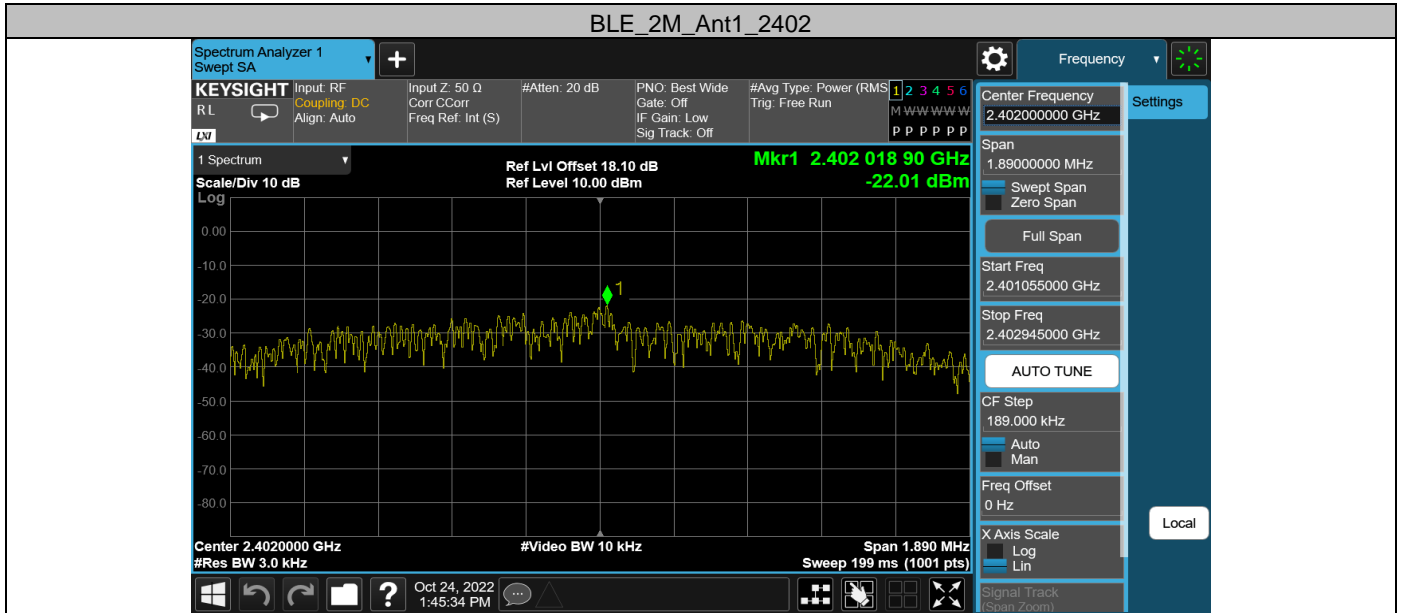


Appendix D: Maximum power spectral density Test Result

| Test Mode | Antenna | Frequency[MHz] | Result[dBm/3kHz] | Limit[dBm/3kHz] | Verdict |
|-----------|---------|----------------|------------------|-----------------|---------|
| BLE_1M | Ant1 | 2402 | -19.47 | ≤8.00 | PASS |
| | | 2440 | -20.28 | ≤8.00 | PASS |
| | | 2480 | -21.00 | ≤8.00 | PASS |
| BLE_2M | Ant1 | 2402 | -22.01 | ≤8.00 | PASS |
| | | 2440 | -22.90 | ≤8.00 | PASS |
| | | 2480 | -23.55 | ≤8.00 | PASS |

Test Graphs



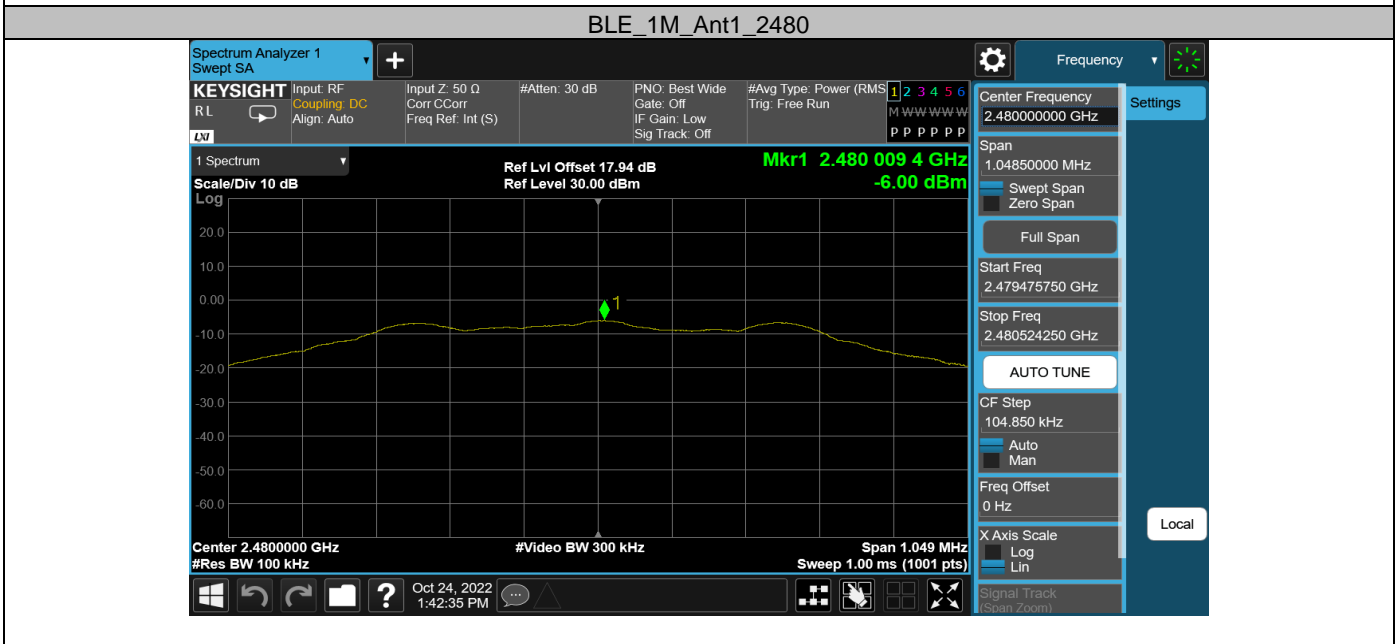
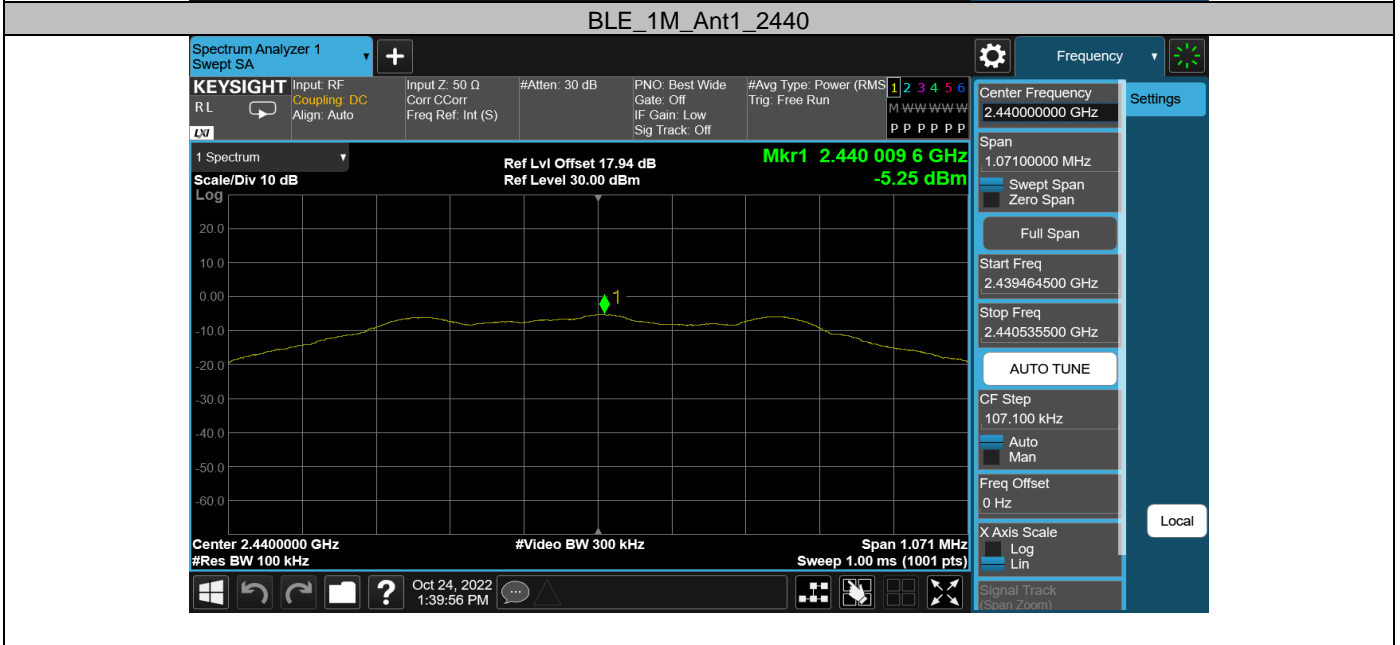


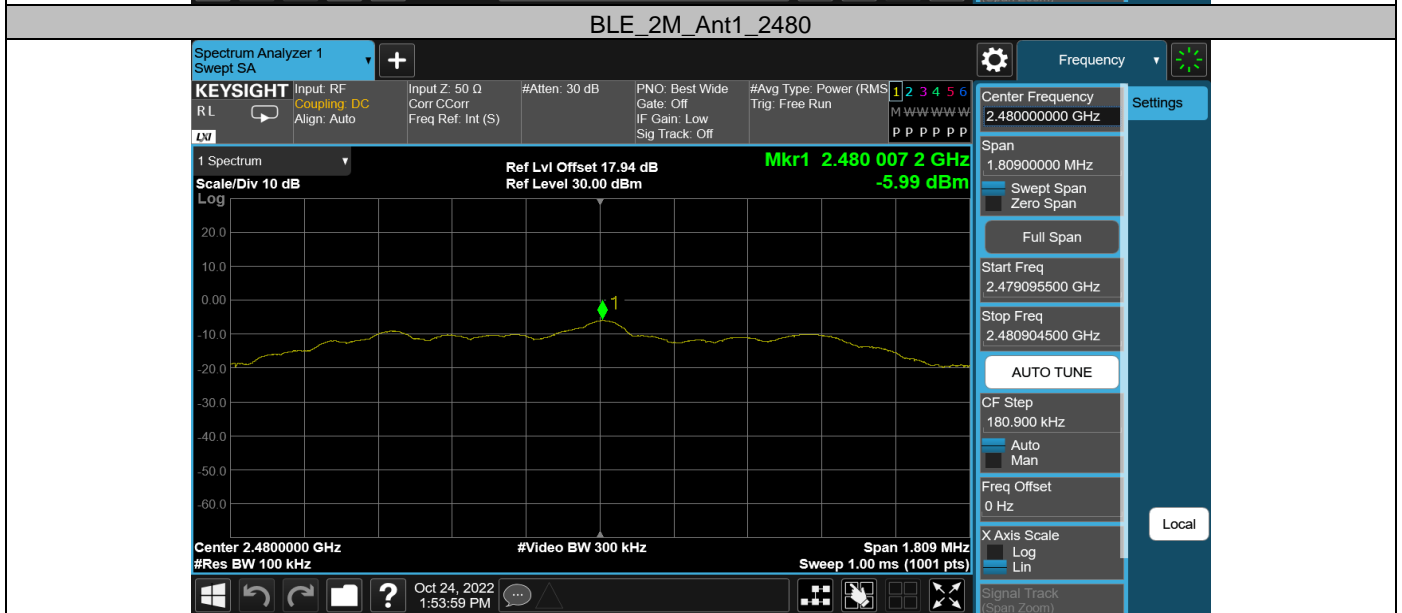
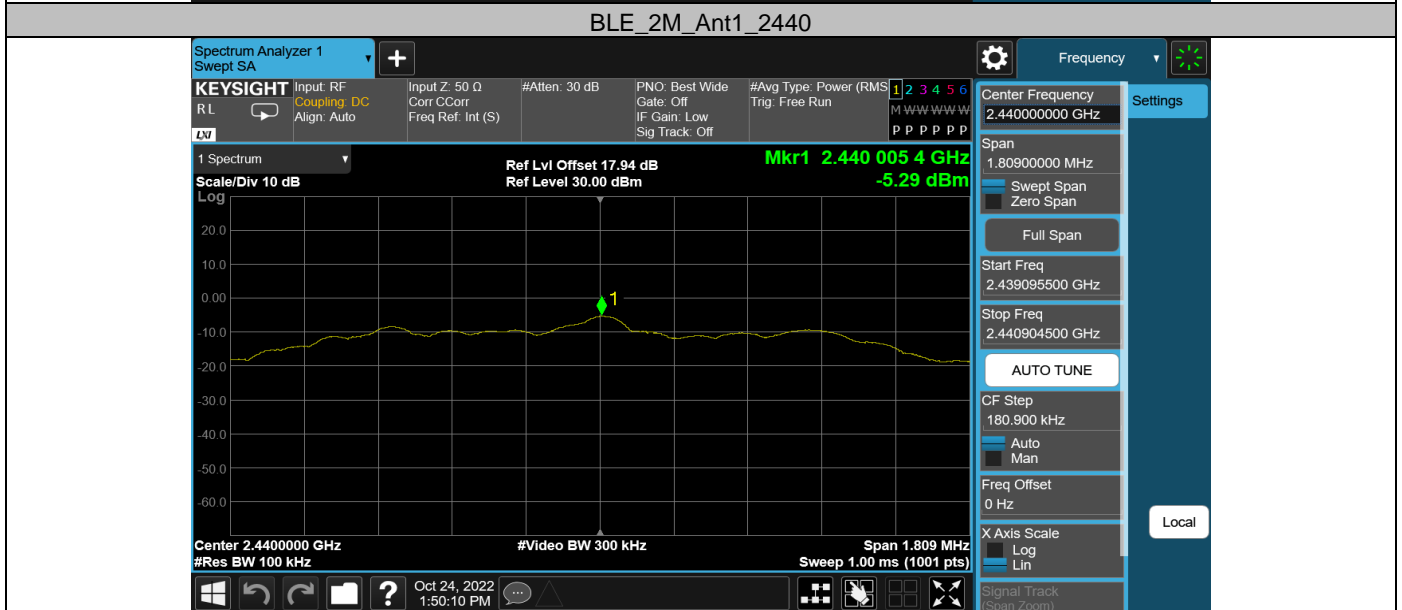
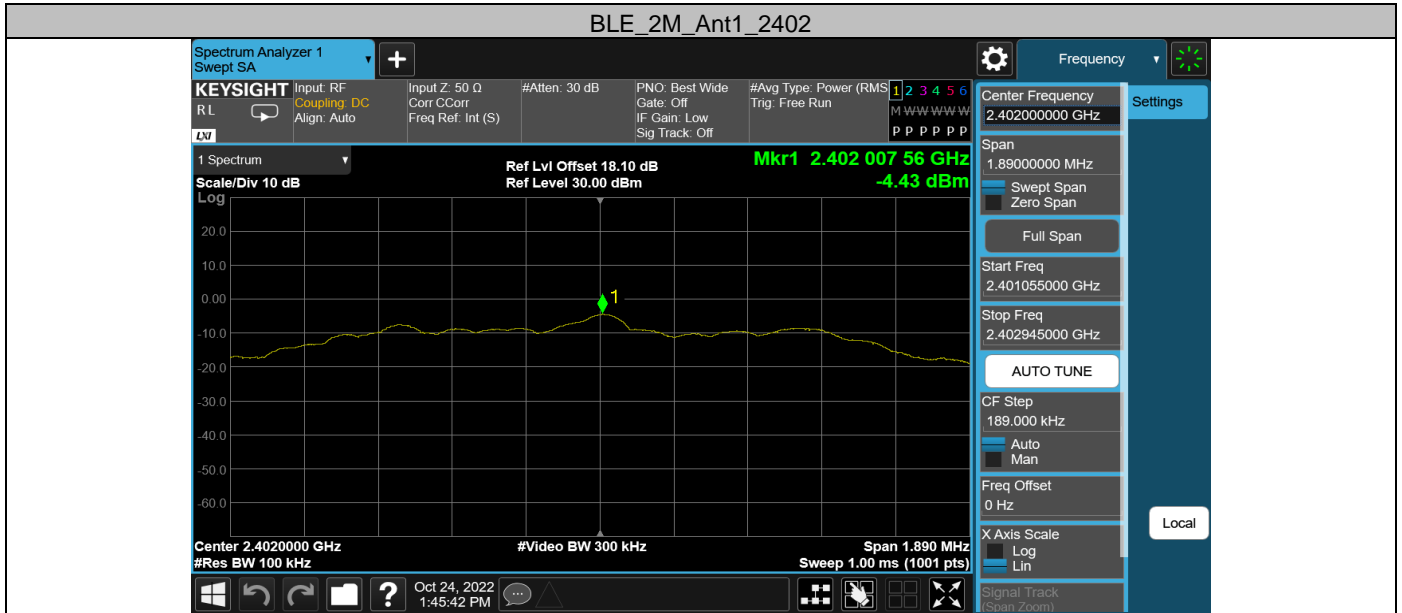
Appendix E: Reference level measurement
Test Result

| Test Mode | Antenna | Freq(MHz) | Max.Point[MHz] | Result[dBm] |
|-----------|---------|-----------|----------------|-------------|
| BLE_1M | Ant1 | 2402 | 2402.01 | -4.42 |
| | | 2440 | 2440.01 | -5.25 |
| | | 2480 | 2480.01 | -6.00 |
| BLE_2M | Ant1 | 2402 | 2402.01 | -4.43 |
| | | 2440 | 2440.01 | -5.29 |
| | | 2480 | 2480.01 | -5.99 |



Test Graphs

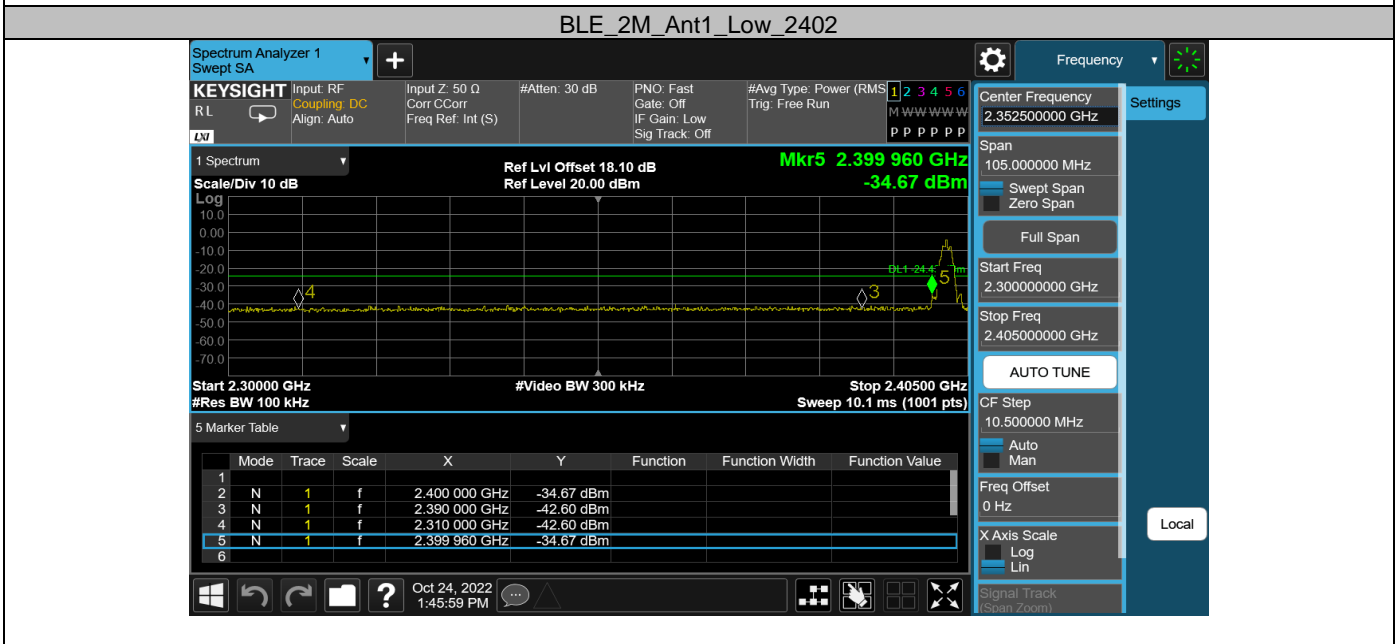
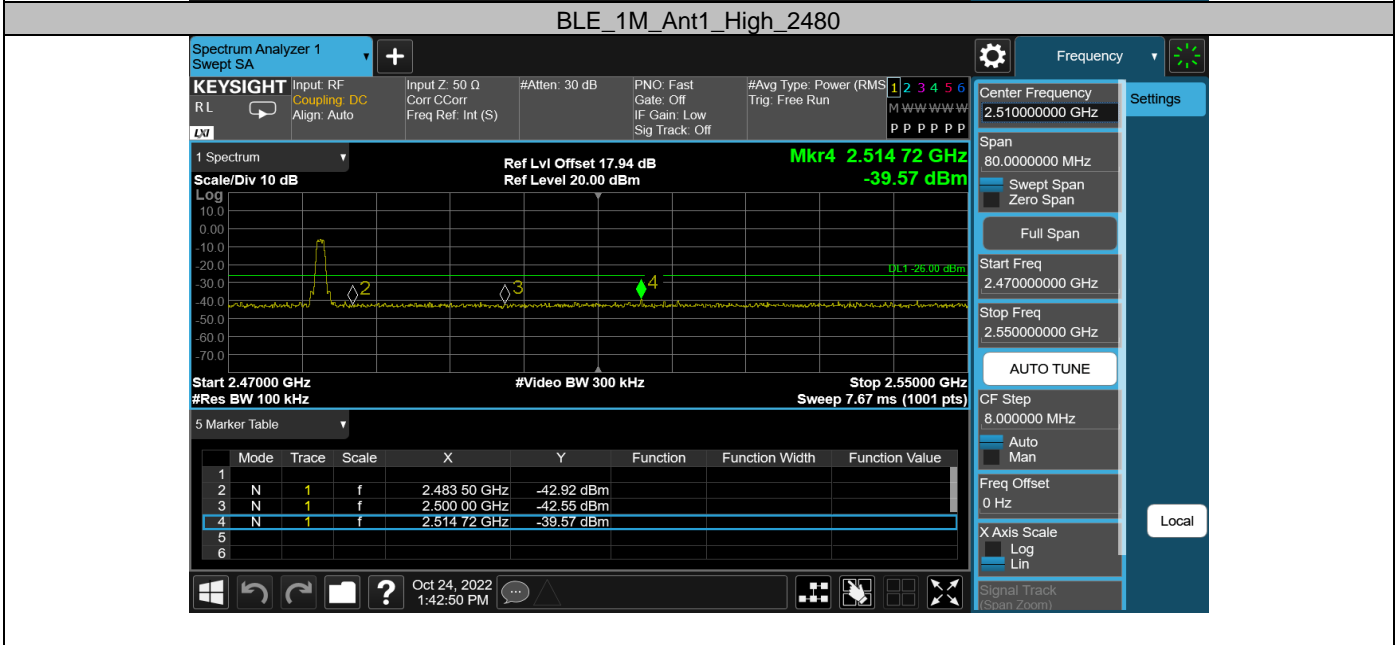
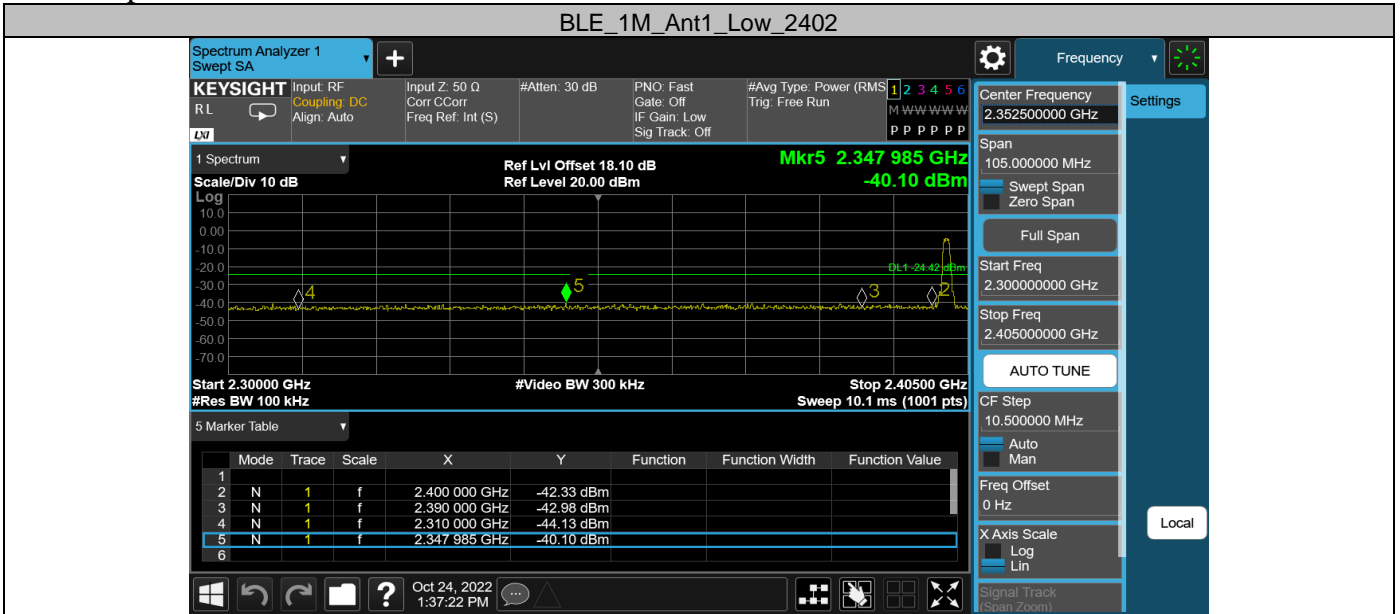


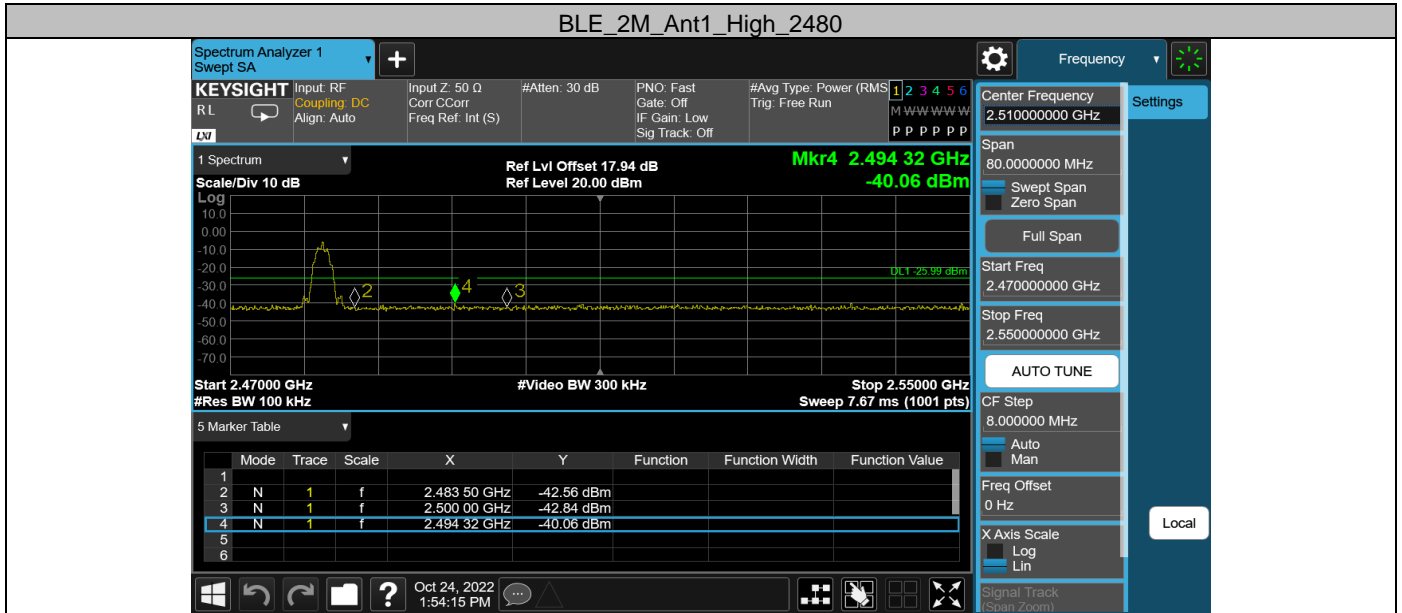


Appendix F: Band edge measurements
 Test Result

| Test Mode | Antenna | Ch Name | Frequency [MHz] | Ref Level [dBm] | Result [dBm] | Limit [dBm] | Verdict |
|-----------|---------|---------|-----------------|-----------------|--------------|-------------|---------|
| BLE_1M | Ant1 | Low | 2402 | -4.42 | -40.1 | ≤-24.42 | PASS |
| | | High | 2480 | -6.00 | -39.57 | ≤-26 | PASS |
| BLE_2M | Ant1 | Low | 2402 | -4.43 | -34.67 | ≤-24.43 | PASS |
| | | High | 2480 | -5.99 | -40.06 | ≤-25.99 | PASS |

Test Graphs

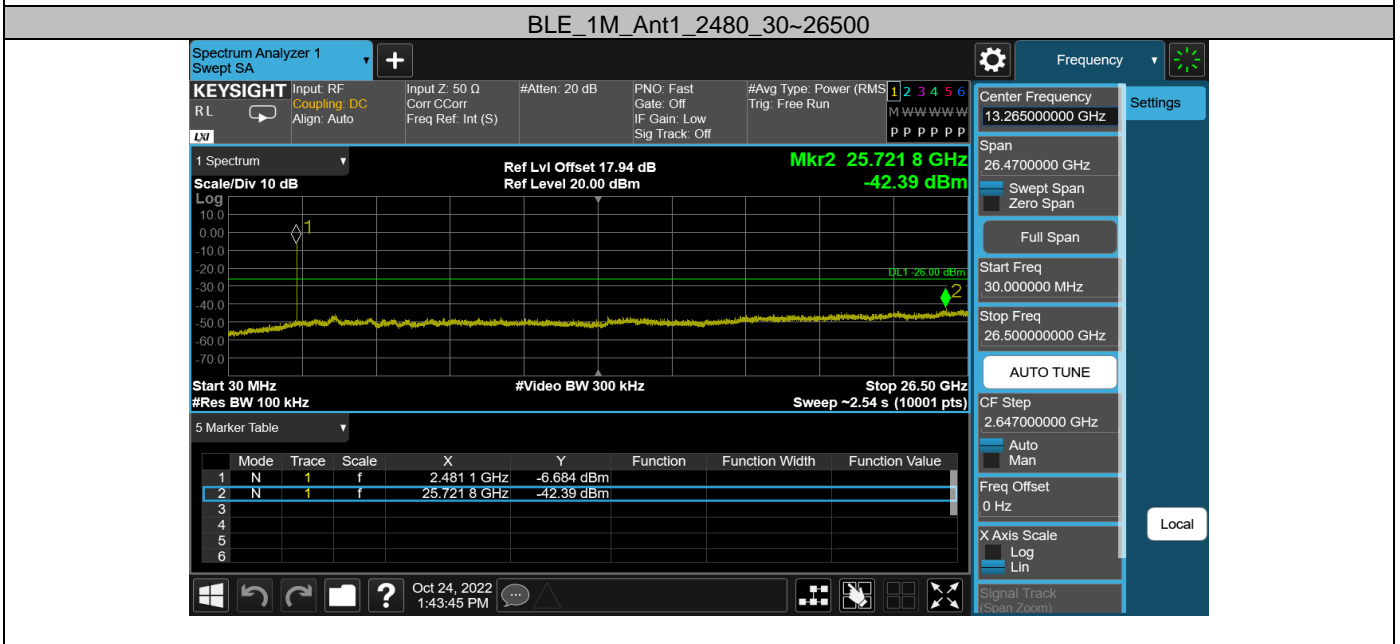
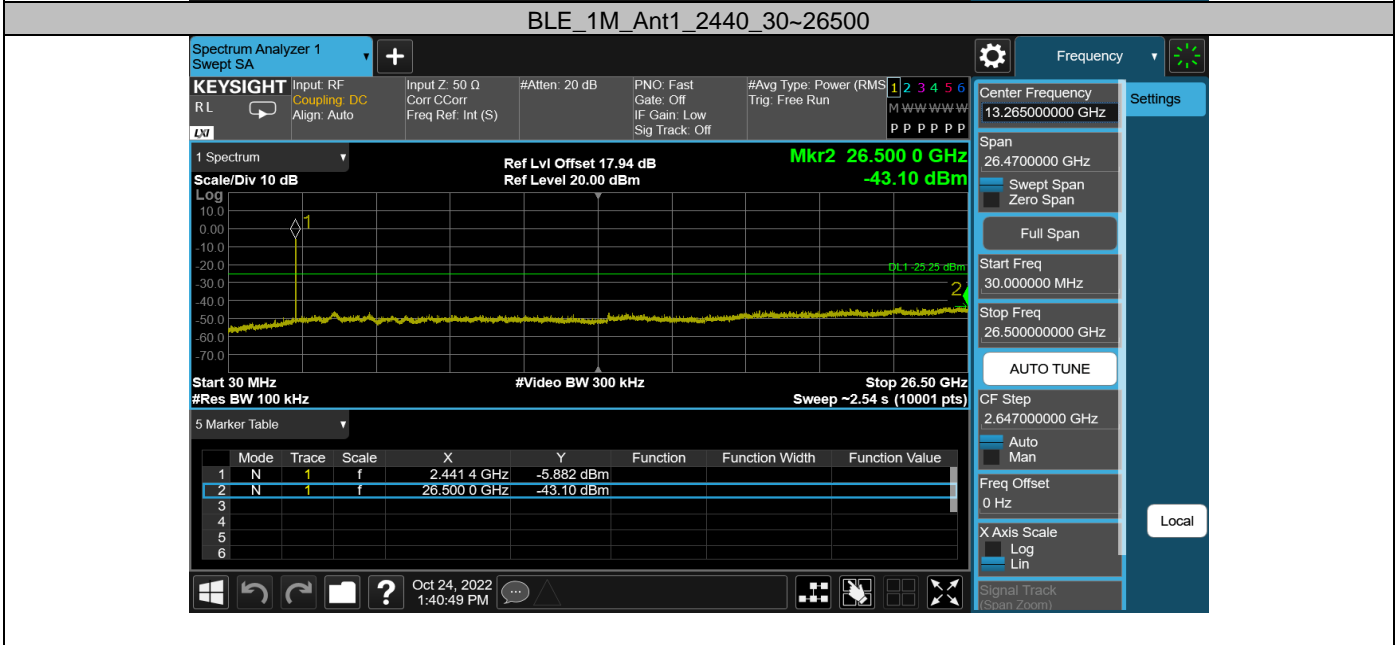
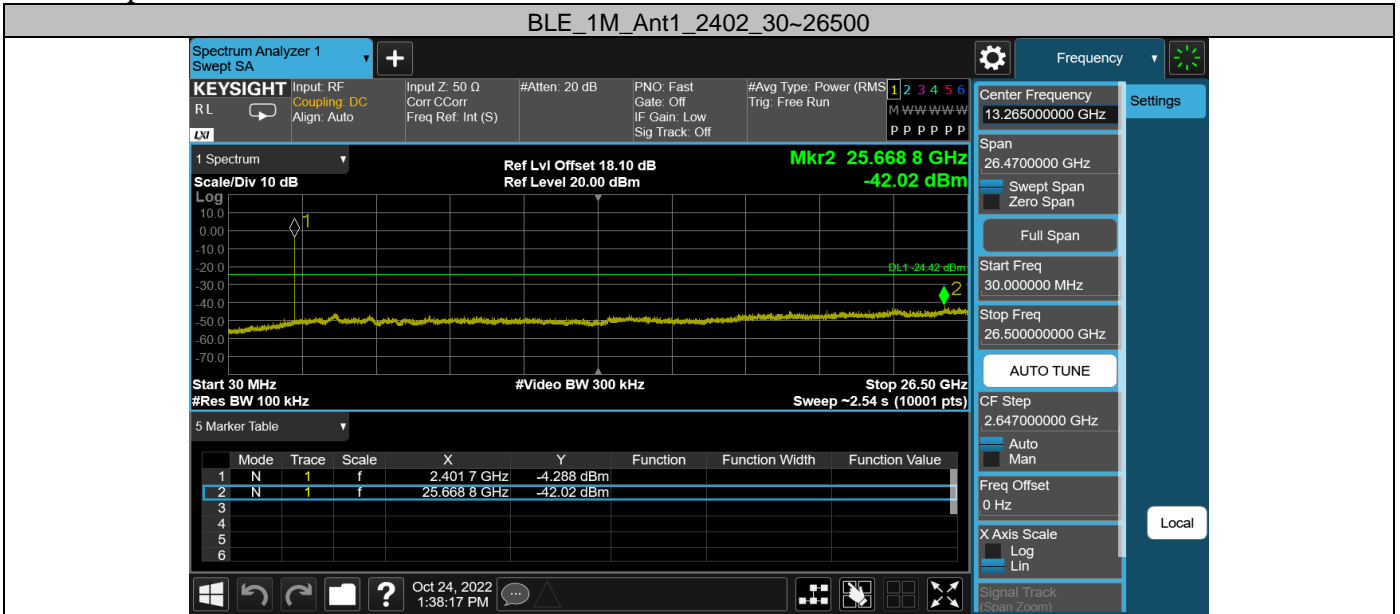


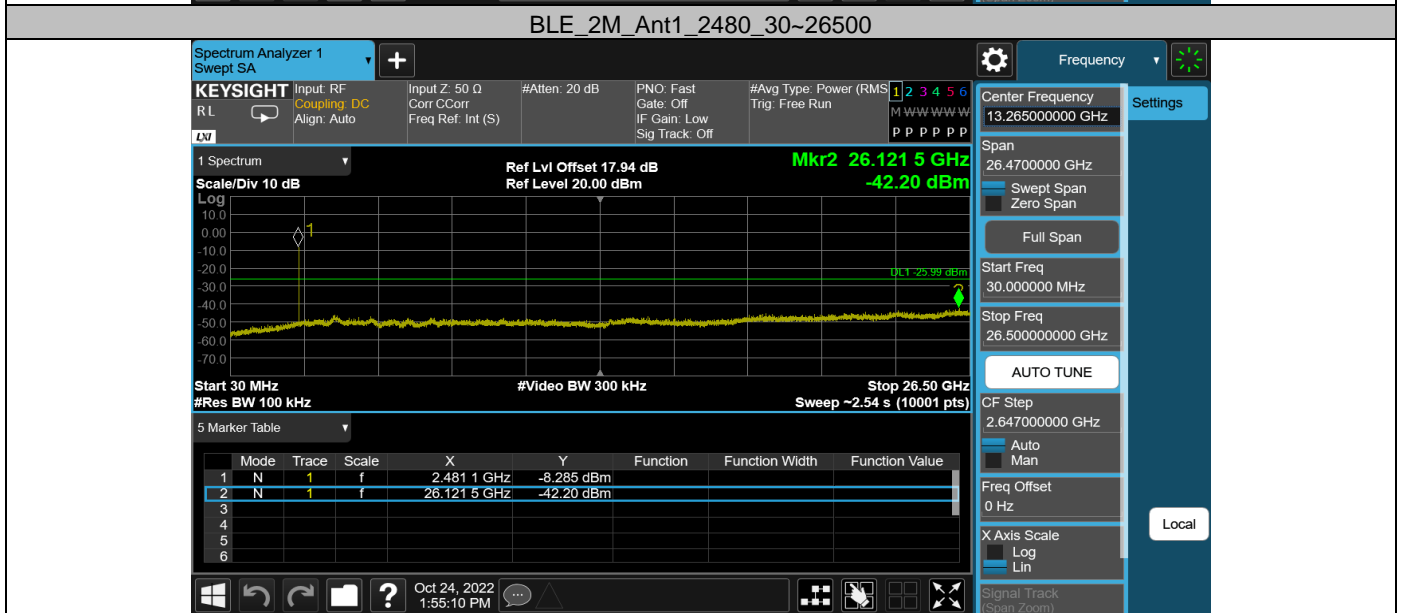
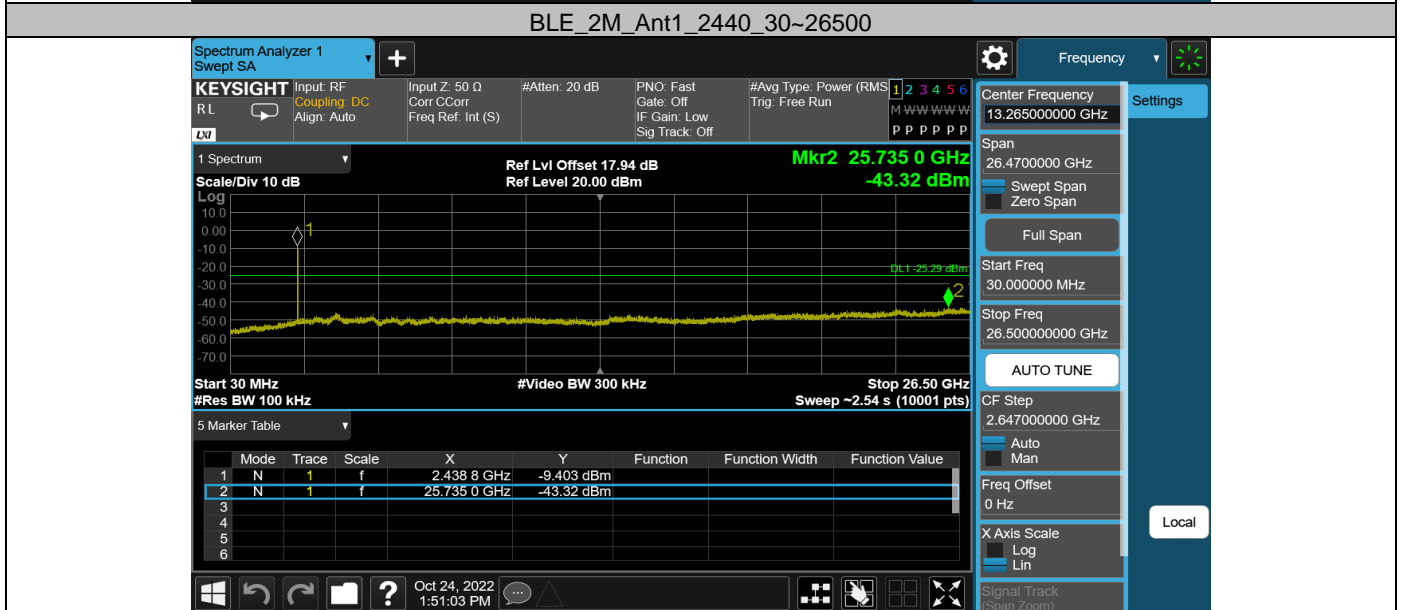
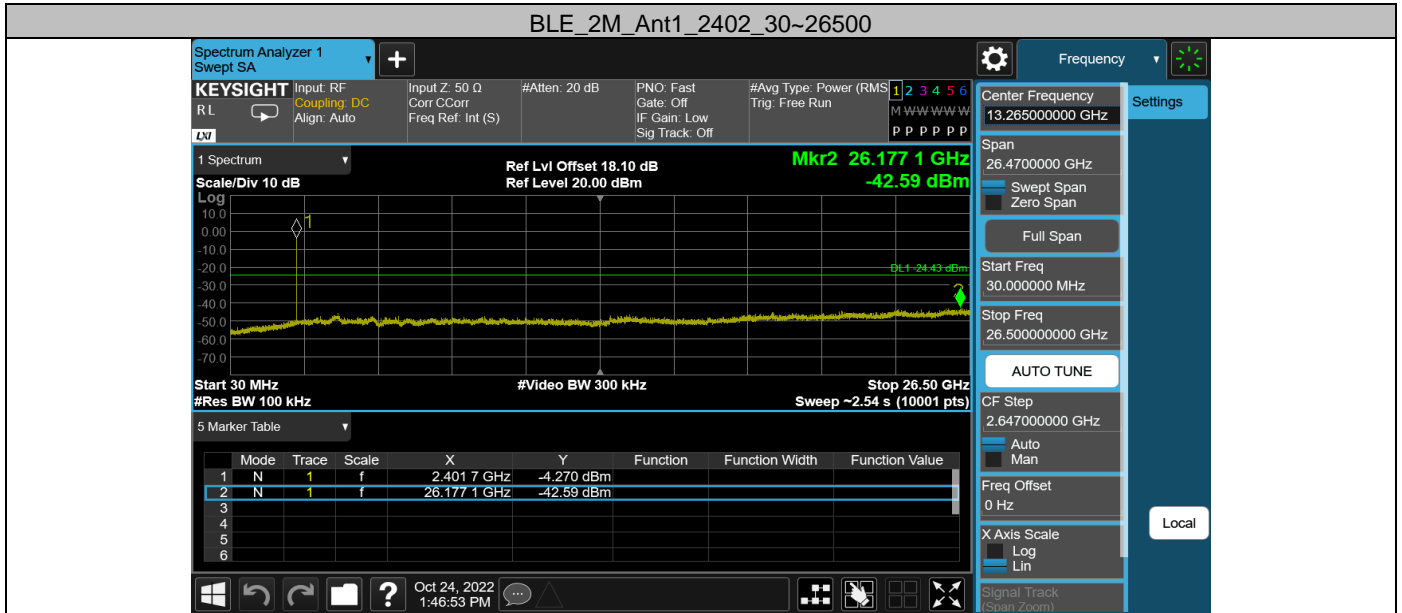


Appendix G: Conducted Spurious Emission
Test Result

| Test Mode | Antenna | Frequency[MHz] | Freq Range [MHz] | Ref Level [dBm] | Result [dBm] | Limit[dBm] | Verdict |
|-----------|---------|----------------|------------------|-----------------|--------------|------------|---------|
| BLE_1M | Ant1 | 2402 | 30~26500 | -4.42 | -42.03 | ≤-24.42 | PASS |
| | | 2440 | 30~26500 | -5.25 | -43.1 | ≤-25.25 | PASS |
| | | 2480 | 30~26500 | -6.00 | -42.39 | ≤-26 | PASS |
| BLE_2M | Ant1 | 2402 | 30~26500 | -4.43 | -42.59 | ≤-24.43 | PASS |
| | | 2440 | 30~26500 | -5.29 | -43.32 | ≤-25.29 | PASS |
| | | 2480 | 30~26500 | -5.99 | -42.2 | ≤-25.99 | PASS |

Test Graphs



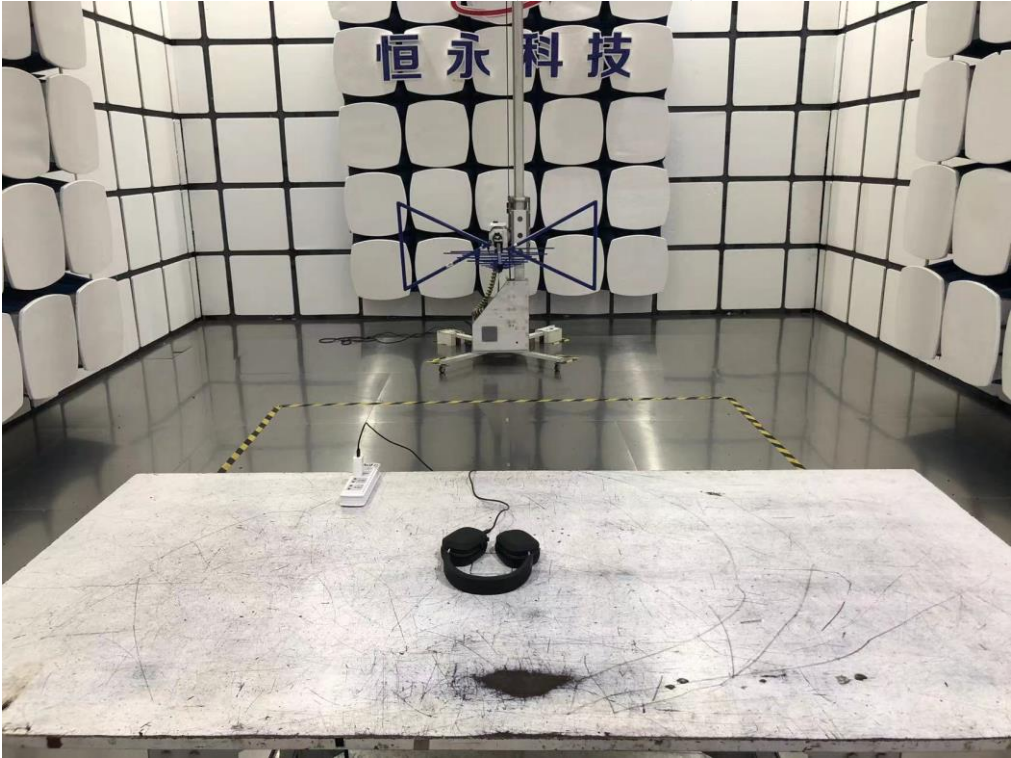


12. TEST SETUP PHOTO

Conducted Test



Radiated Test (Below 1GHz)

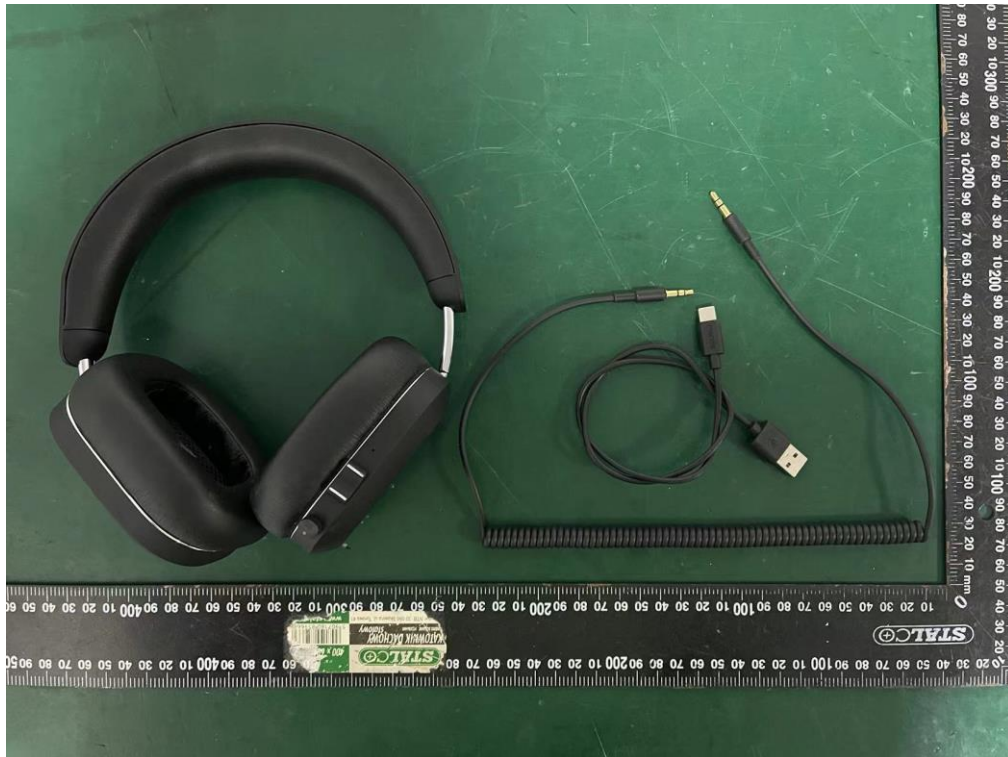


Radiated Test (Above 1GHz)



13.EUT PHOTO

External Photos
M/N: Mondo over-ear



External Photos
M/N: Mondo over-ear



External Photos
M/N: Mondo over-ear



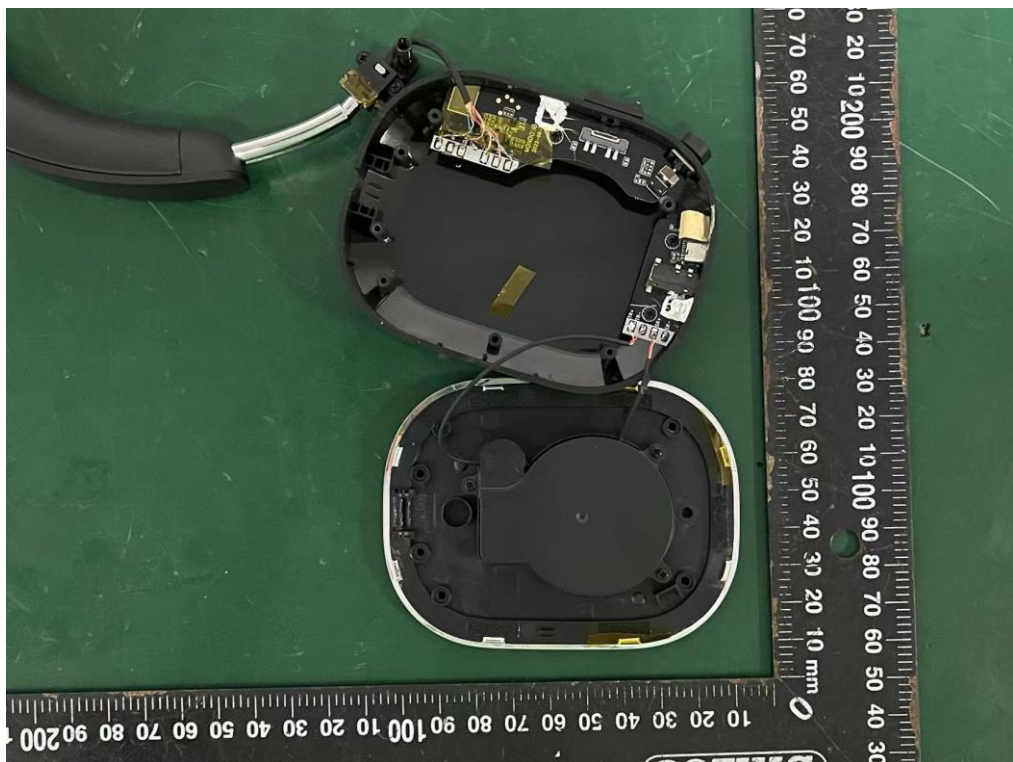
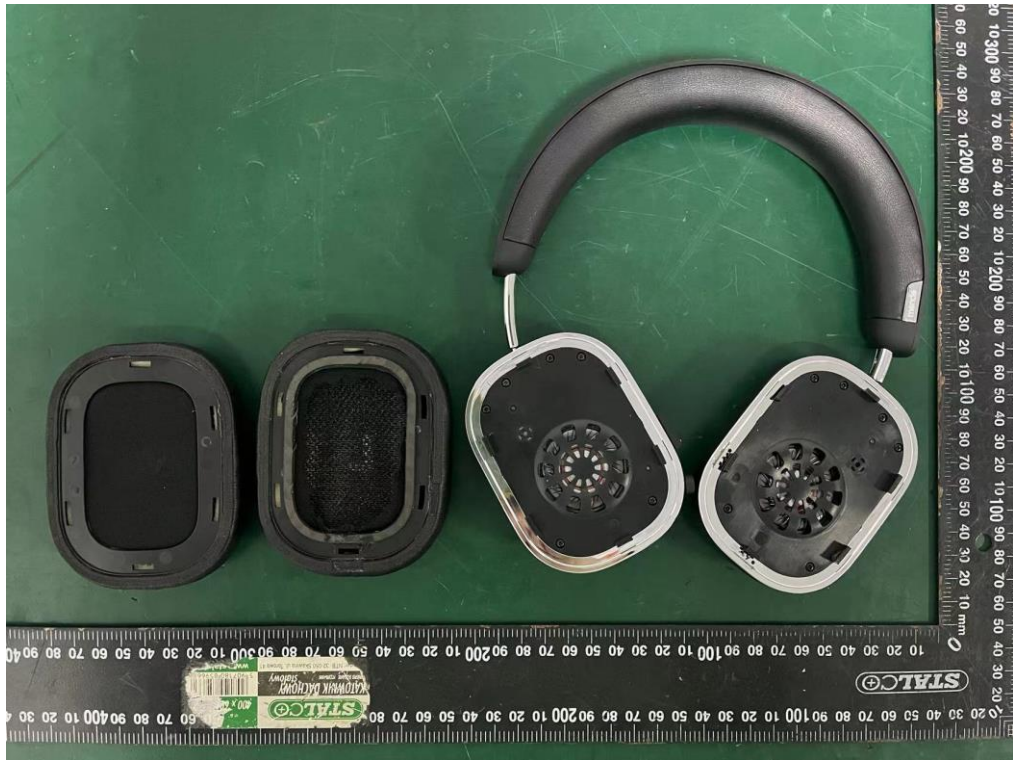
External Photos
M/N: Mondo over-ear



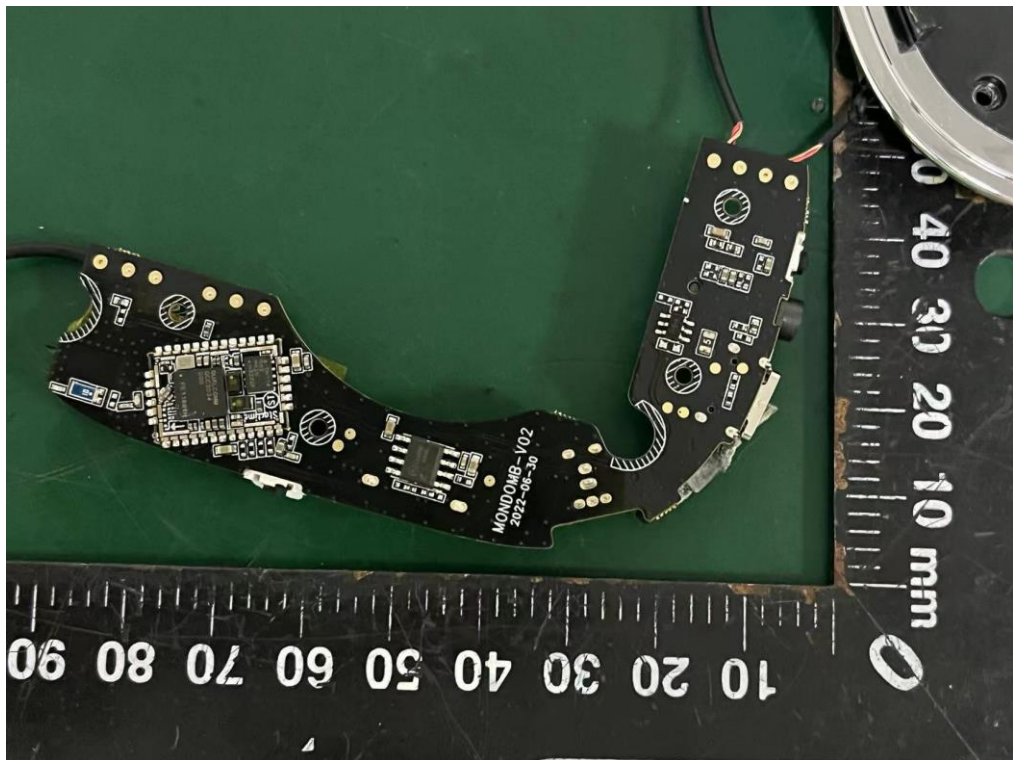
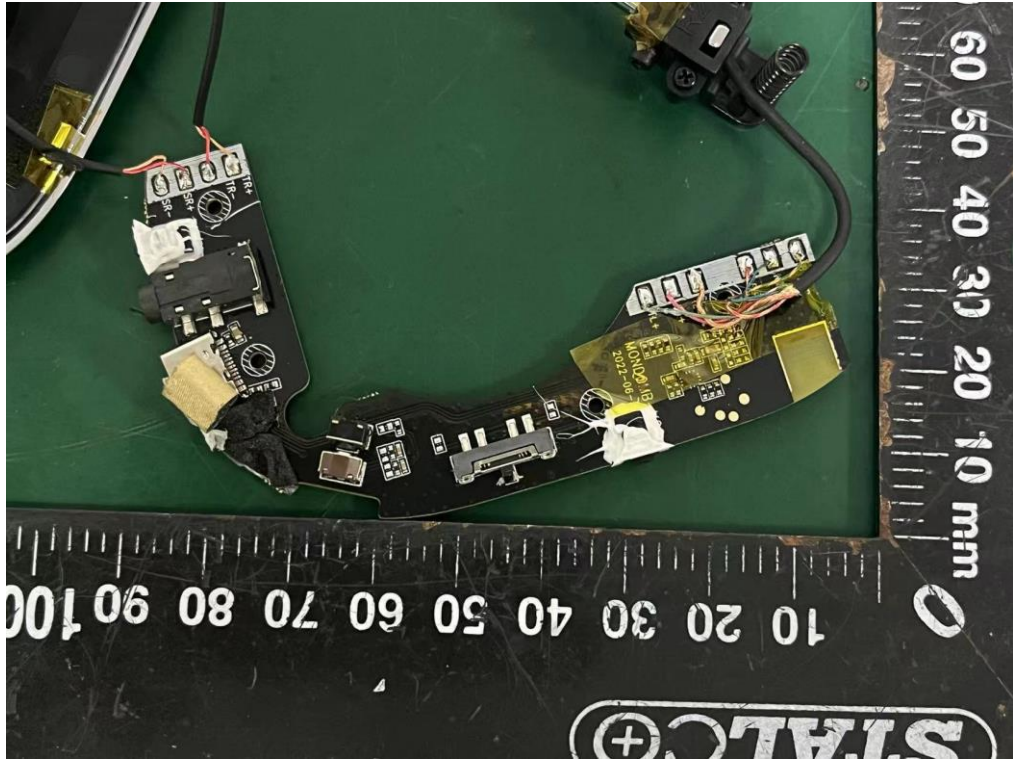
External Photos
M/N: Mondo over-ear



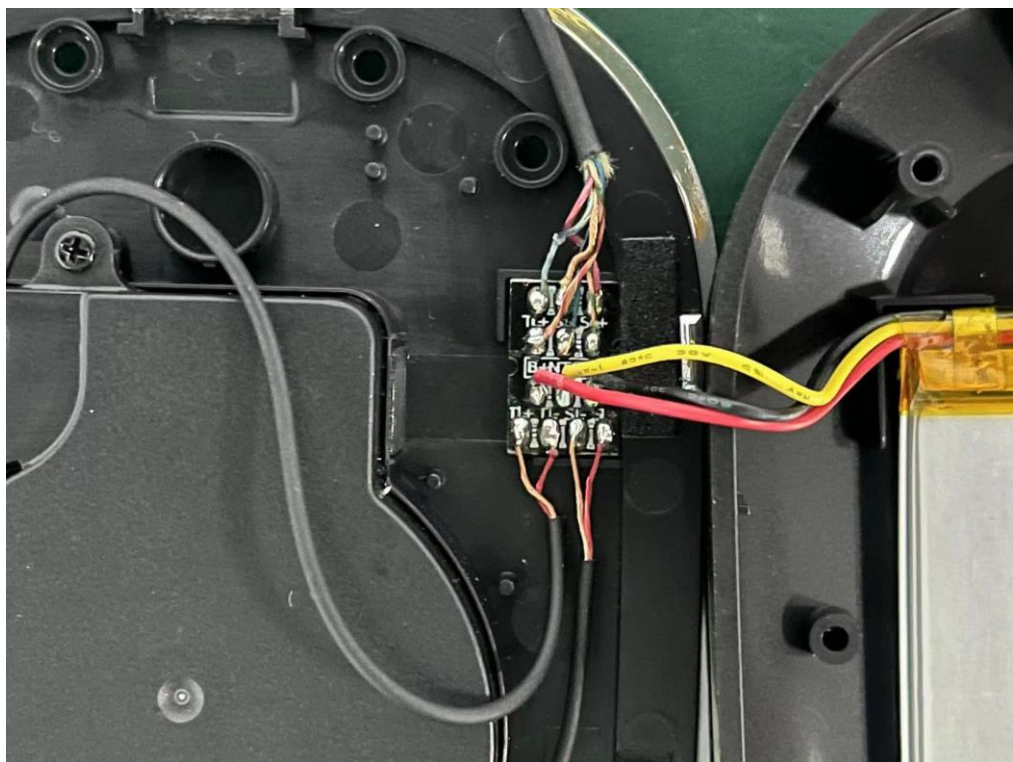
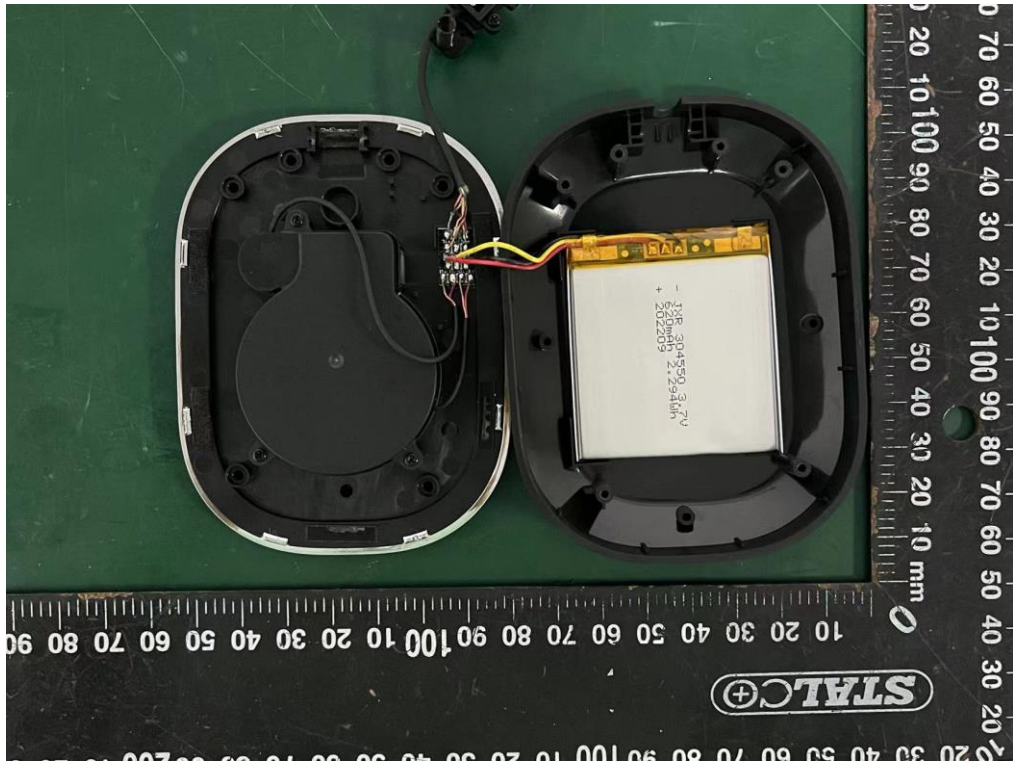
Internal Photos
M/N: Mondo over-ear



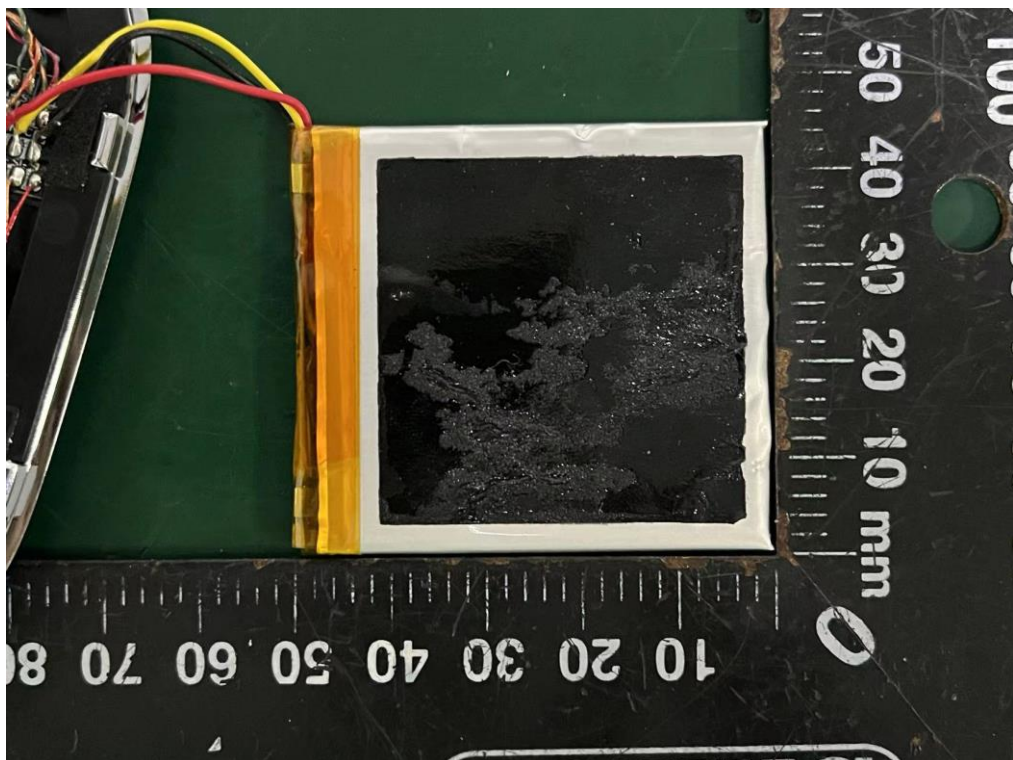
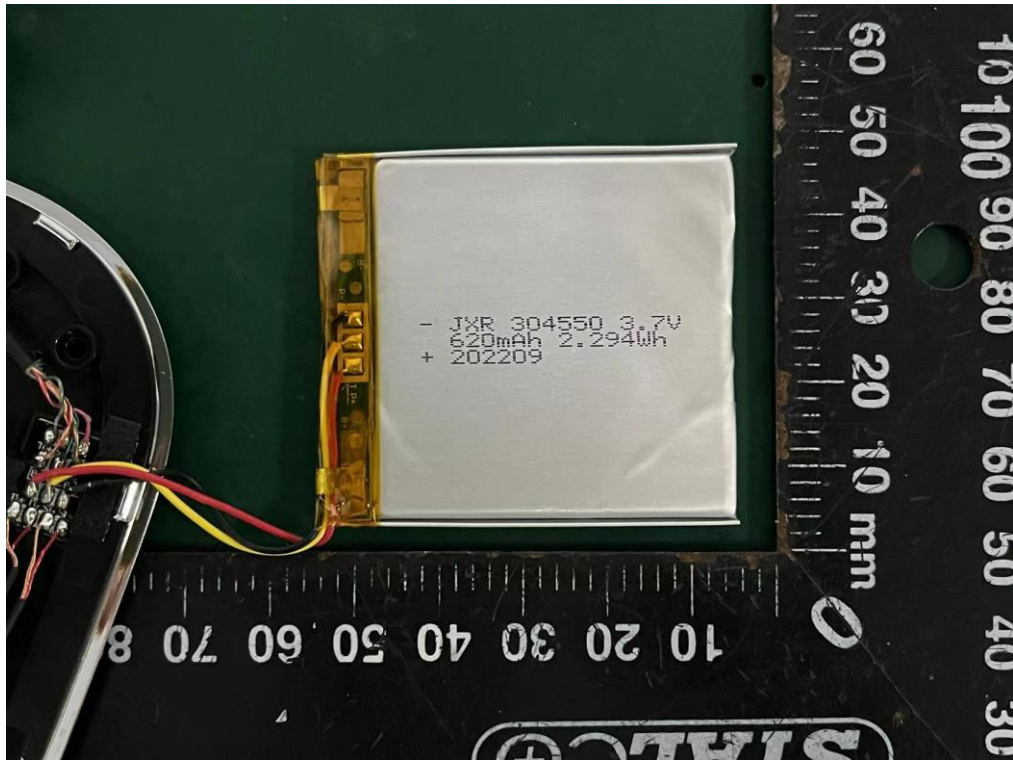
Internal Photos
M/N: Mondo over-ear



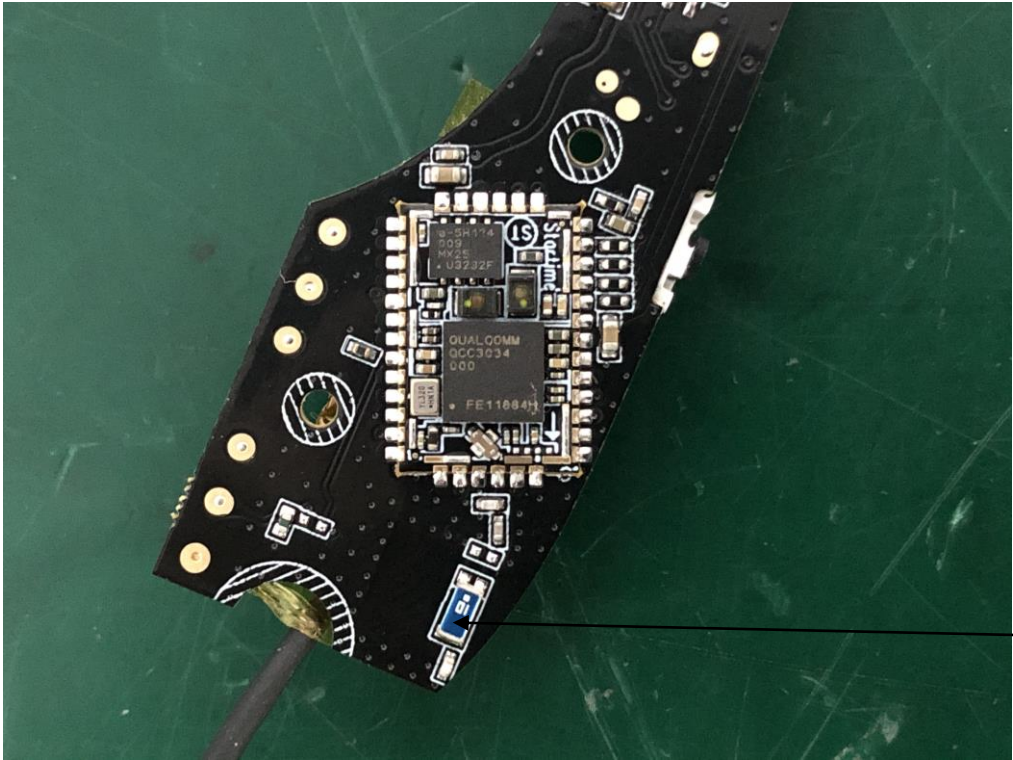
Internal Photos
M/N: Mondo over-ear



Internal Photos
M/N: Mondo over-ear



Internal Photos
M/N: Mondo over-ear



Bluetooth
Antenna

End of Test Report