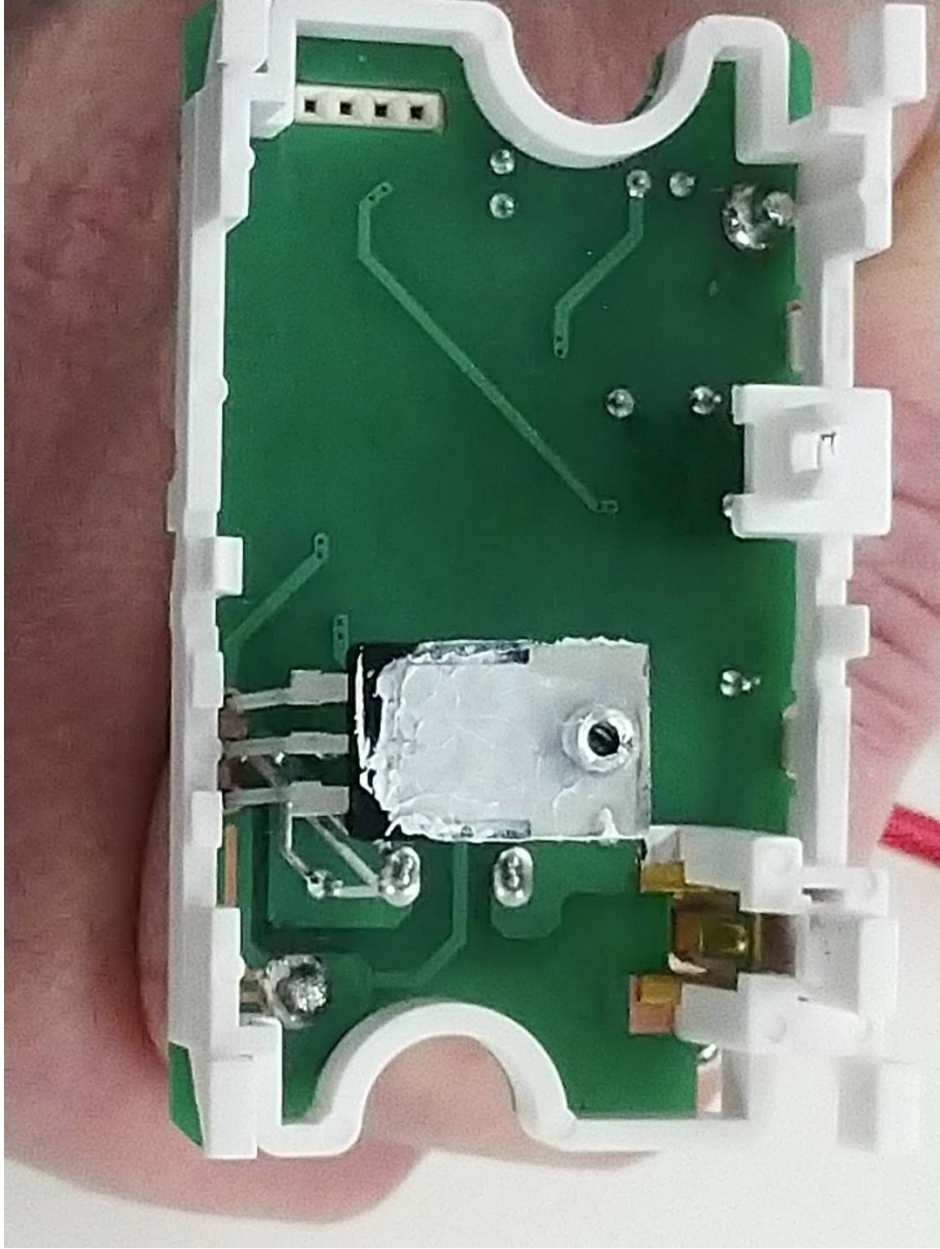
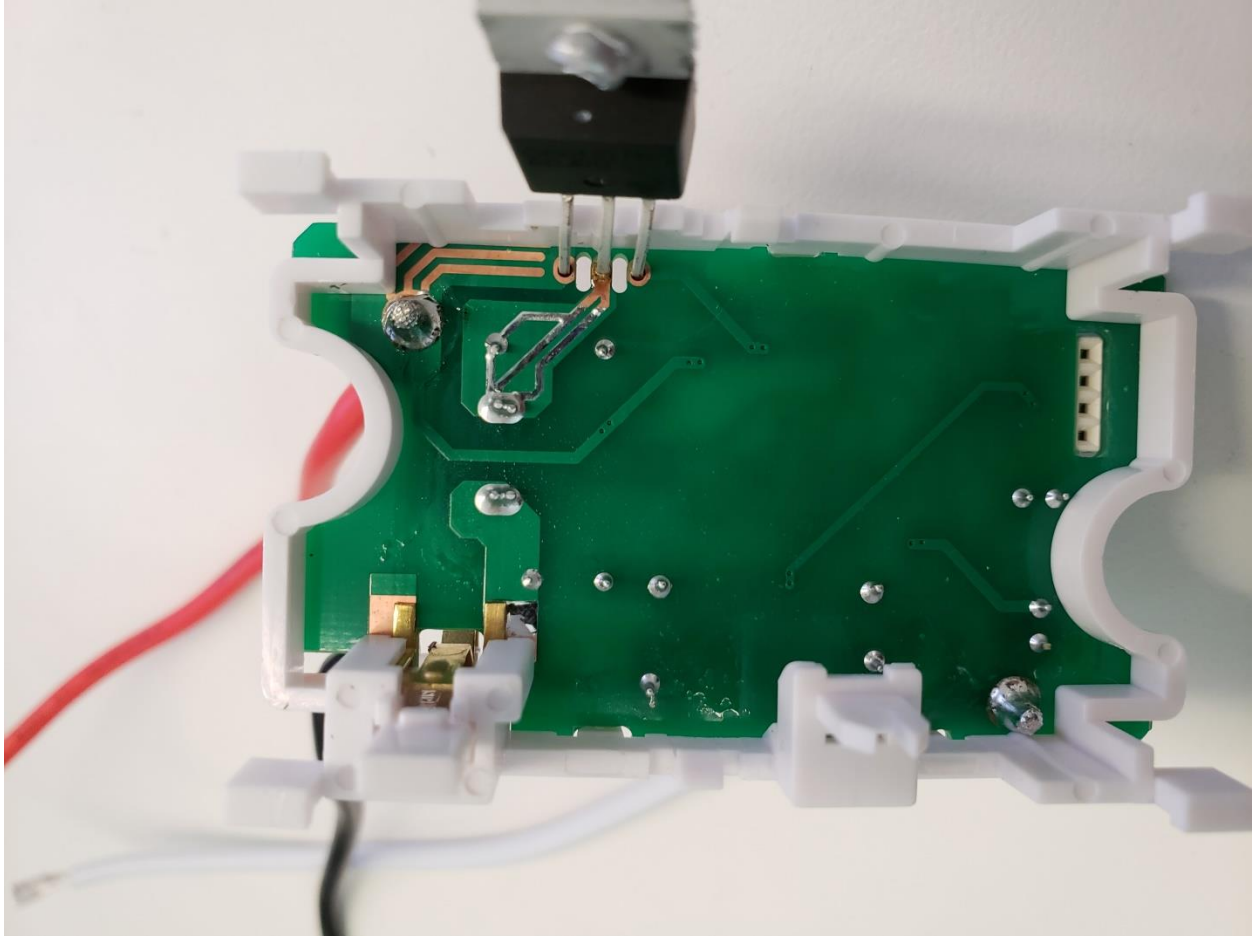


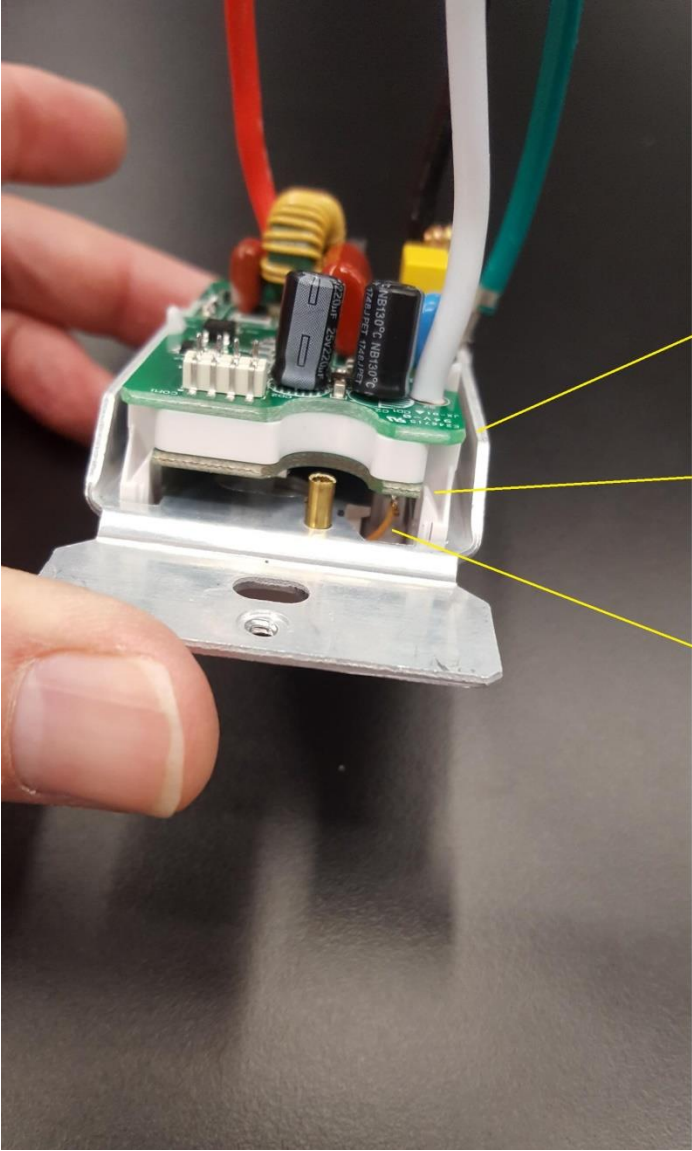
Side views shown above to provide pictures of components



The Triac is shown as it would mount to the aluminum housing (back of Power board in picture)



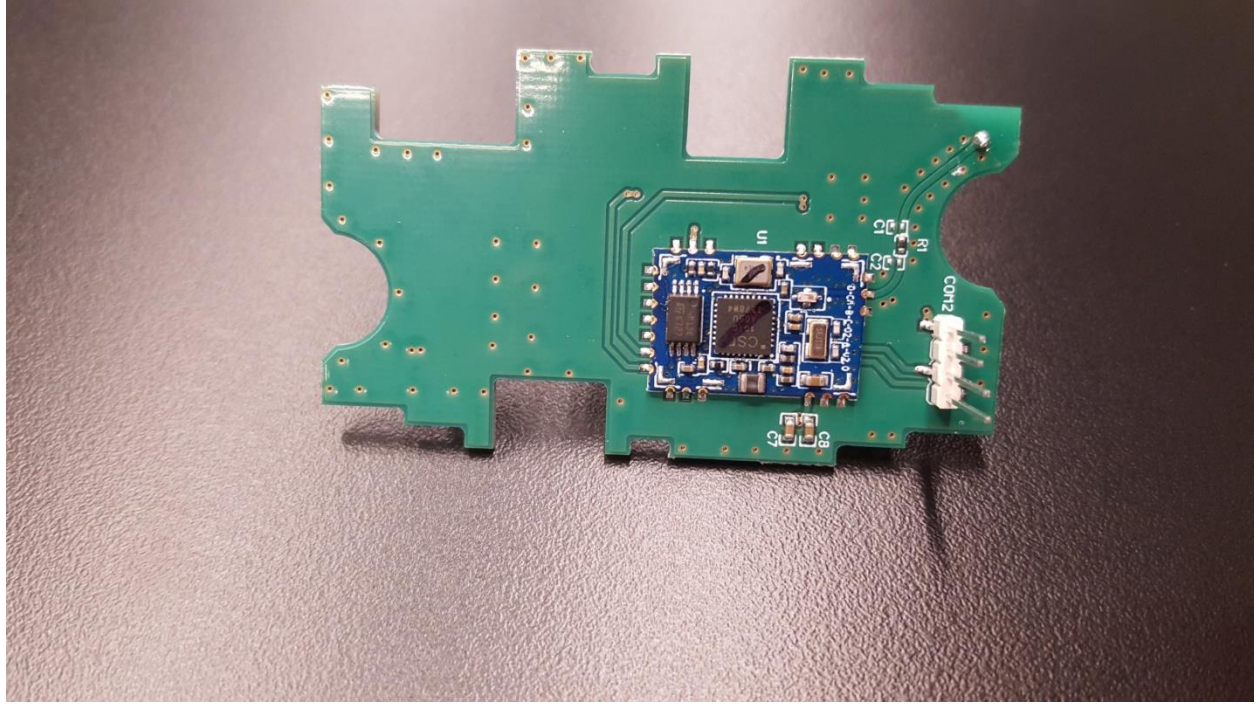
With Triac bent up

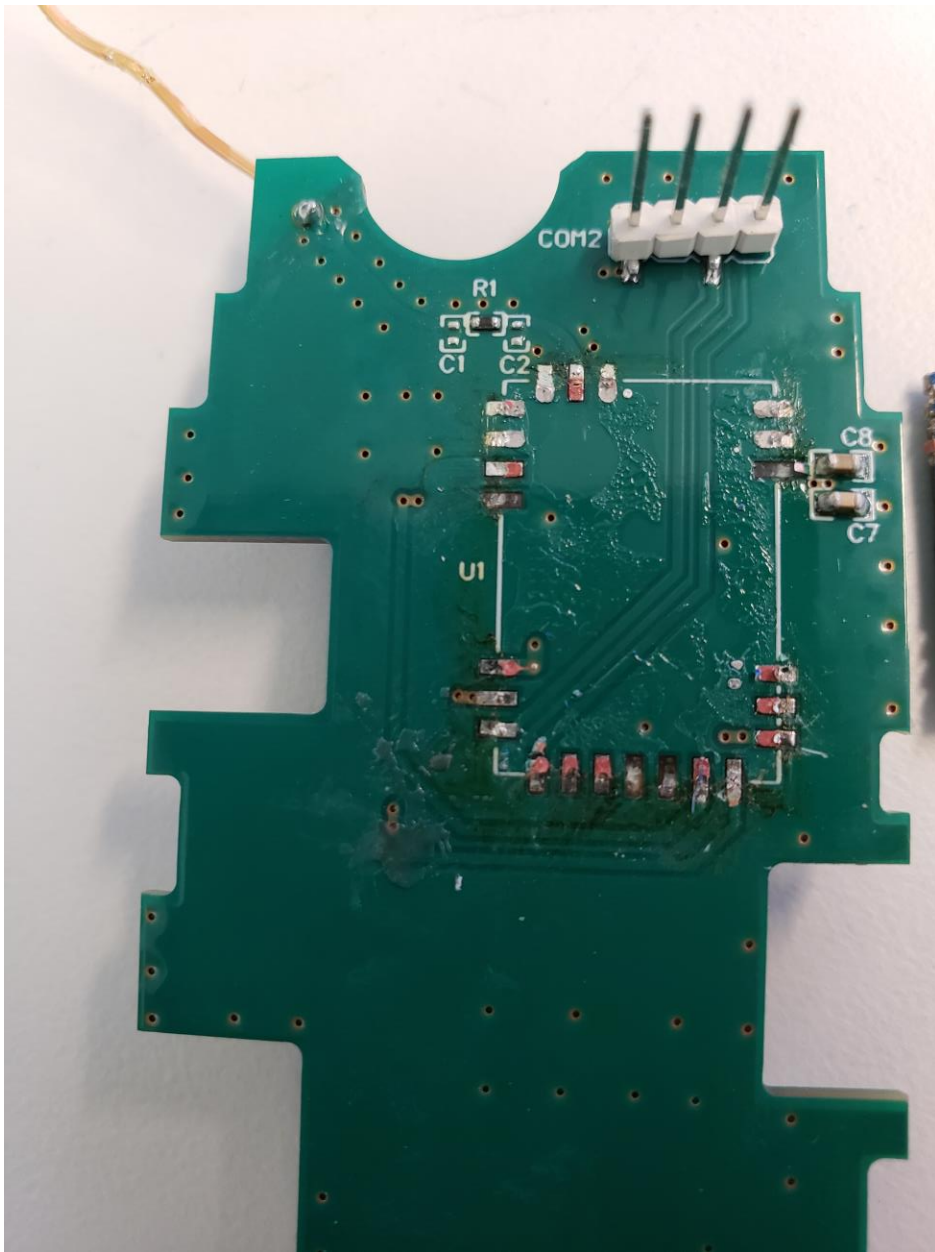


Power Board

Control Board

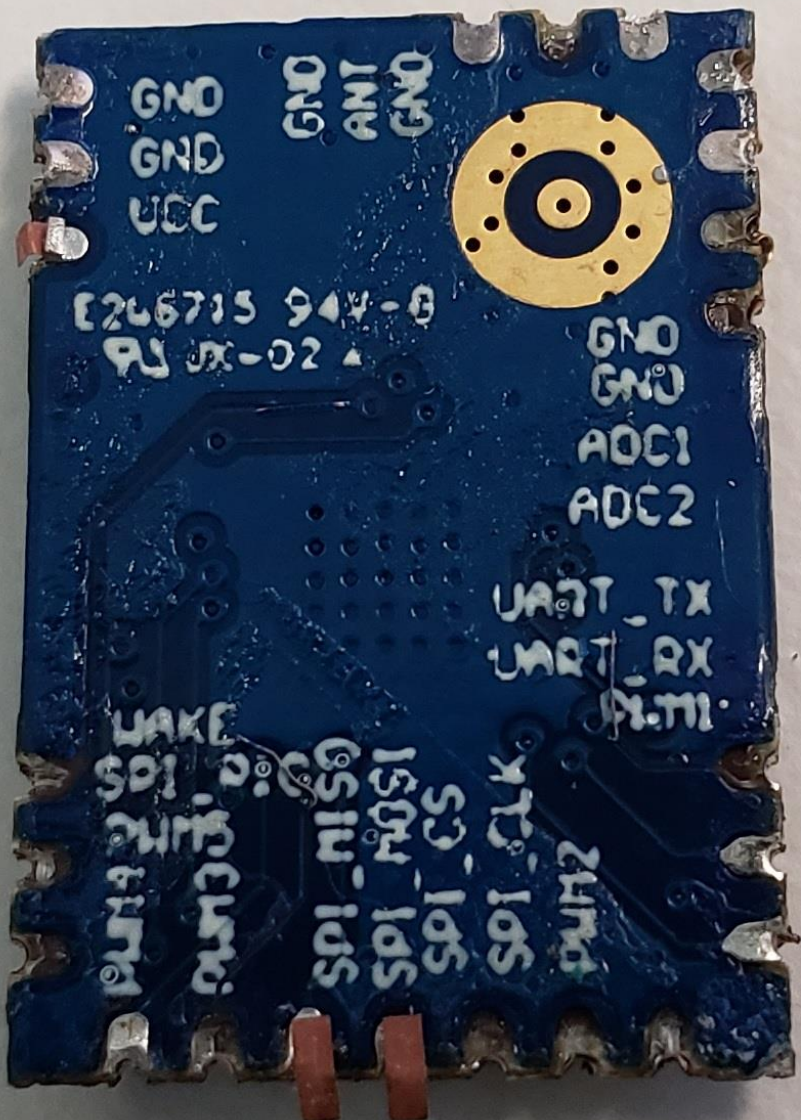
Antenna Wire





Control board with daughter card removed.

Back of daughter card shown below:



GND
GND
UCC

GND
ANT
GND



E26715 94V-0
PJ JX-02

GND
GND
ADC1
ADC2

UART_TX
UART_RX
D1.MI

UAKE
SPI_0
SPI_1
SPI_2
SPI_3
SPI_4
SPI_5
SPI_CS
SPI_CLK
SPI_10S
SPI_11S
SPI_12S
SPI_13S
SPI_14S
SPI_15S
SPI_16S
SPI_17S
SPI_18S
SPI_19S
SPI_20S
SPI_21S
SPI_22S
SPI_23S
SPI_24S
SPI_25S
SPI_26S
SPI_27S
SPI_28S
SPI_29S
SPI_30S
SPI_31S
SPI_32S
SPI_33S
SPI_34S
SPI_35S
SPI_36S
SPI_37S
SPI_38S
SPI_39S
SPI_40S
SPI_41S
SPI_42S
SPI_43S
SPI_44S
SPI_45S
SPI_46S
SPI_47S
SPI_48S
SPI_49S
SPI_50S
SPI_51S
SPI_52S
SPI_53S
SPI_54S
SPI_55S
SPI_56S
SPI_57S
SPI_58S
SPI_59S
SPI_60S
SPI_61S
SPI_62S
SPI_63S
SPI_64S
SPI_65S
SPI_66S
SPI_67S
SPI_68S
SPI_69S
SPI_70S
SPI_71S
SPI_72S
SPI_73S
SPI_74S
SPI_75S
SPI_76S
SPI_77S
SPI_78S
SPI_79S
SPI_80S
SPI_81S
SPI_82S
SPI_83S
SPI_84S
SPI_85S
SPI_86S
SPI_87S
SPI_88S
SPI_89S
SPI_90S
SPI_91S
SPI_92S
SPI_93S
SPI_94S
SPI_95S
SPI_96S
SPI_97S
SPI_98S
SPI_99S
SPI_100S

