

产品规格承认书

Specification For Approval

客户名称:

Customer

T-CHIP INTELLIGENT TECHNOLOGY

供应商:

Supplier

Delin Comm Limited

客户料号:

Customer P/N

产品名称:

Production Name

天线 (WiFi FPC 天线)

产品型号:

Production Number

GKZS-AC5815F-1930MHz-D;

供应商确认盖章 (Supplier Signature)

工程师 Engineer	审核 Checked by	批准 Approved by
刘南伙	谢倩菊	刘和明
2020年03月20日	2020年03月20日	2020年03月20日

客户确认盖章 (Customer Signature)

工程师 Engineer	审核 Checked by	批准 Approved by
年 月 日	年 月 日	年 月 日

注: 客户确认盖章后, 请将此承认书回传到我公司。

德元科技技术(深圳)有限公司

Tel: 0755-29015125

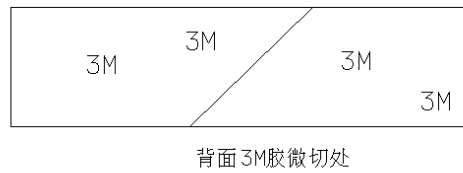
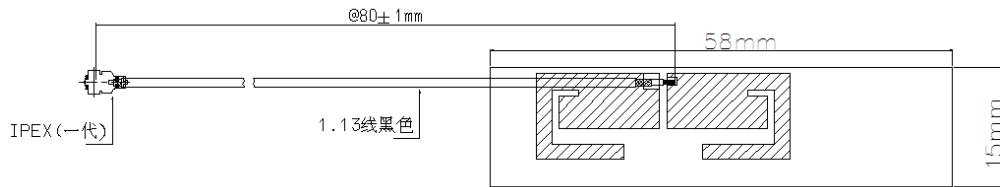
Email: info@delincomm.com support@delincomm.com <https://www.delincomm.com>

变更履历表

Description Record

版本 Version	修改内容 Content Revised	创建者 Modifier	日期 Date
A/0	初始新建	谢倩菊	2020.03.20

一、产品结构图纸 (mm)



二、产品实物图



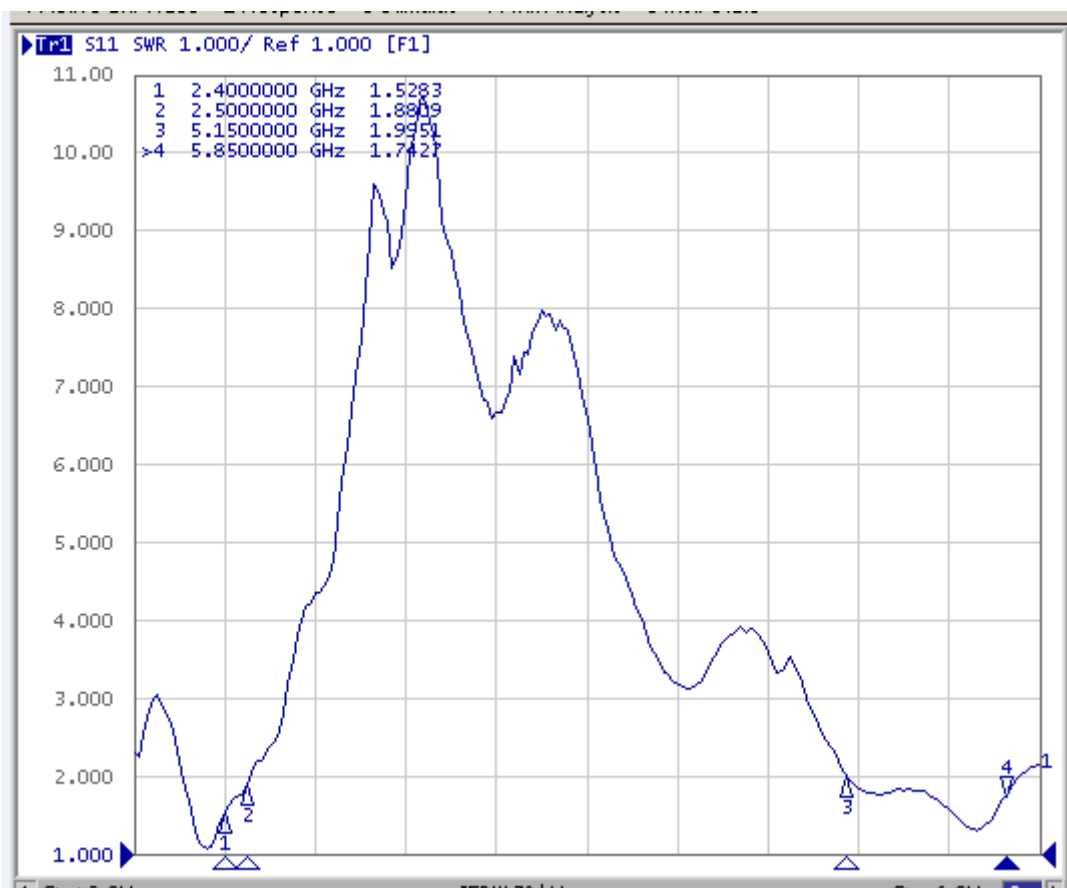
三、产品介绍

- 外观精美
- 体积小
- 全天候工作
- 低驻波、抗干扰

四、天线技术参数

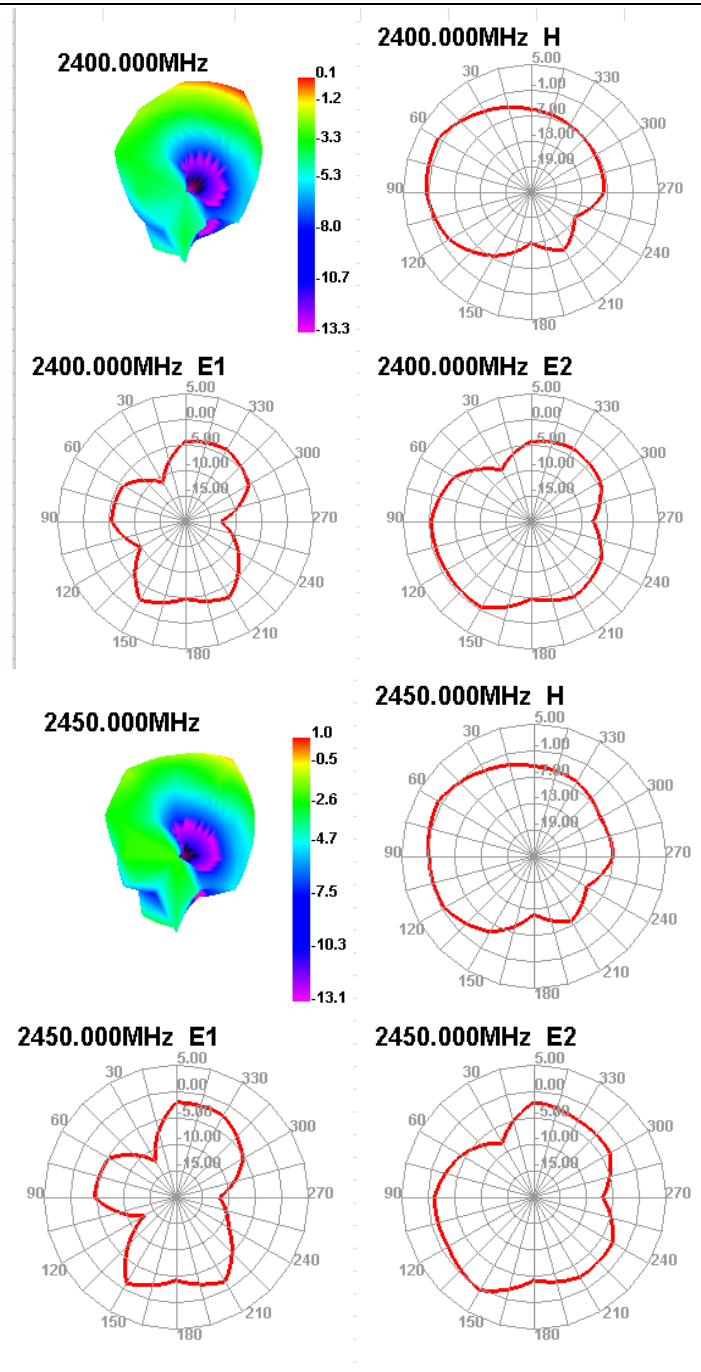
Design Specifications	Typical
天线形式	WIFI-FPC 内置双频天线
工作频率(Working Frequency)	2400-2500MHz 5150-5850MHz
增益 (Gain)	>0dBi
天线效率 (Antenna efficiency)	40%
电压驻波比 (VSWR)	≤2.0
极化方式(Polarization)	垂直
辐射方向(Radiation pattern)	全向
馈电阻抗(Impedance)	50 Ω
功率容量(Power Capacity)	3W
天线接口(Interface)	IPEX
天线尺寸(Overall dimensions)	58*15mm
重量(Weight)	≤10g
工作温度(Operatin Temp)	-40°C~80°C
储存温度(Storing Temp)	-45°C~85°C

五、驻波比测试图

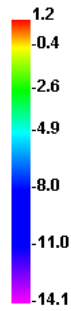
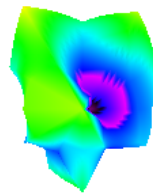


六、增益效率测试数据

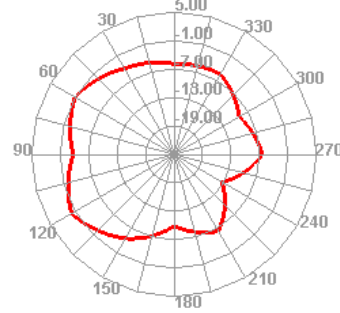
Passive Test For 2400-2500			Passive Test For 5150-5850		
Freq (MHz)	Effi (%)	Gain (dBi)	Freq (MHz)	Effi (%)	Gain (dBi)
2400	44.79	0.09	5150	46.07	2.17
2410	43.49	0.24	5220	50.8	2.1
2420	42.33	0.42	5290	54.97	2.98
2430	43.93	0.11	5360	47.38	2.94
2440	46.81	0.38	5430	64.99	2.83
2450	49.91	0.96	5500	53.78	2.82
2460	42.06	1.59	5570	52.03	2.39
2470	46.49	0.97	5640	44.08	2.95
2480	42.25	1.92	5710	49.17	2.37
2490	47.93	1.2	5780	50.34	2.3
2500	37.77	1.16	5850	51.14	2.32



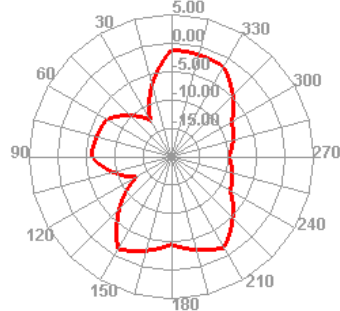
2500.000MHz



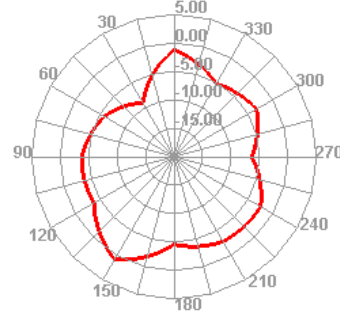
2500.000MHz H



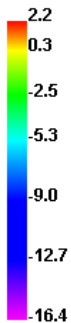
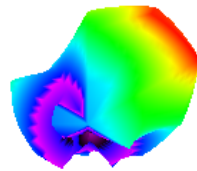
2500.000MHz E1



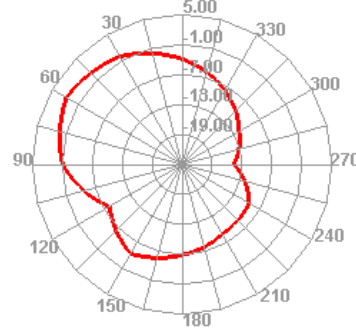
2500.000MHz E2



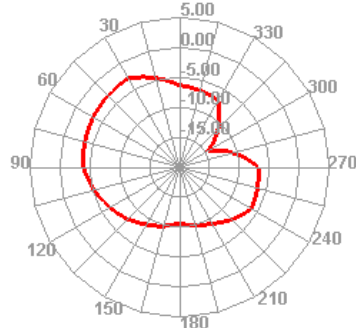
5150.000MHz



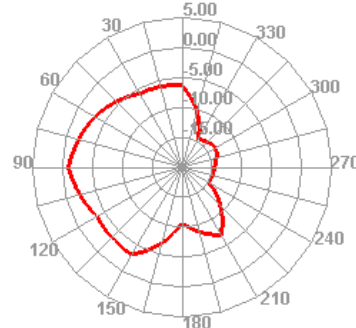
5150.000MHz H



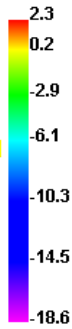
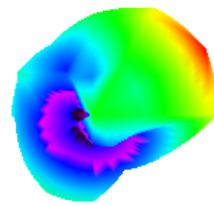
5150.000MHz E1



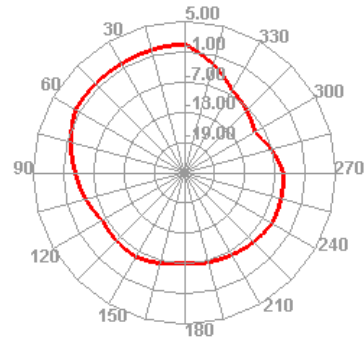
5150.000MHz E2



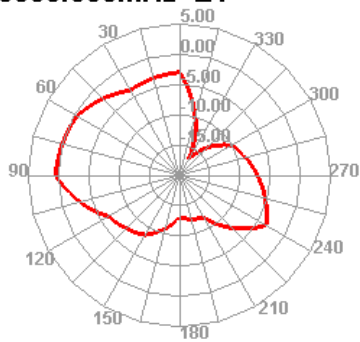
5850.000MHz



5850.000MHz H



5850.000MHz E1



5850.000MHz E2

