

Production Name	Production Number	version
WIFI-FPC Dual Frequency Antenna	AF5815-2.4&5.8-1180-1.13	V1.0

1 . WIFI-FPC Dual Frequency Antenna

- ✧ Delicated outlook
- ✧ Small size
- ✧ Full-time job
- ✧ Low standing wave, anti-interference

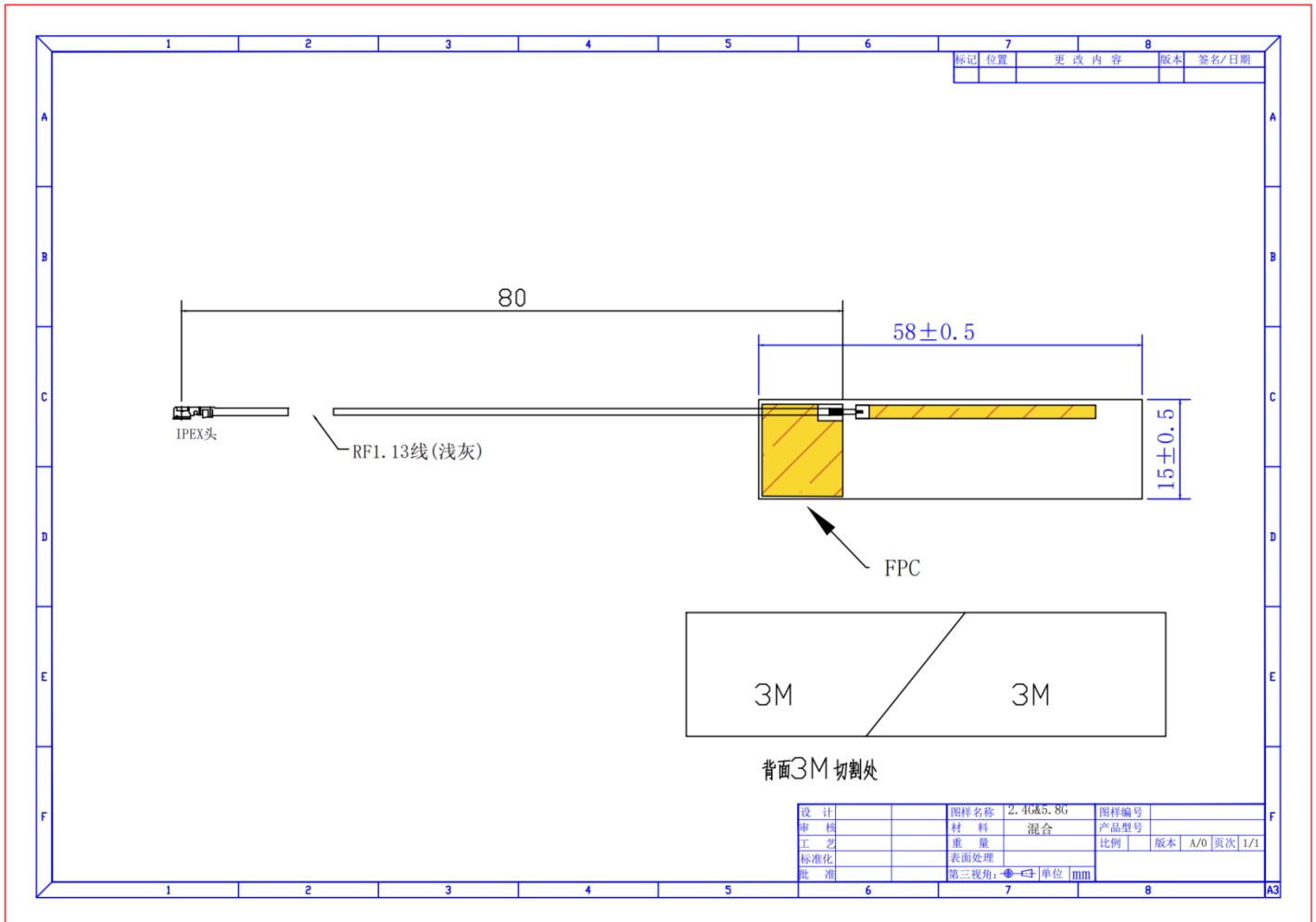
2 . Application of WIFI-FPC Dual Frequency Antenna

- ✧ Mobile devices such as mobile phones, laptops, netbooks, etc.

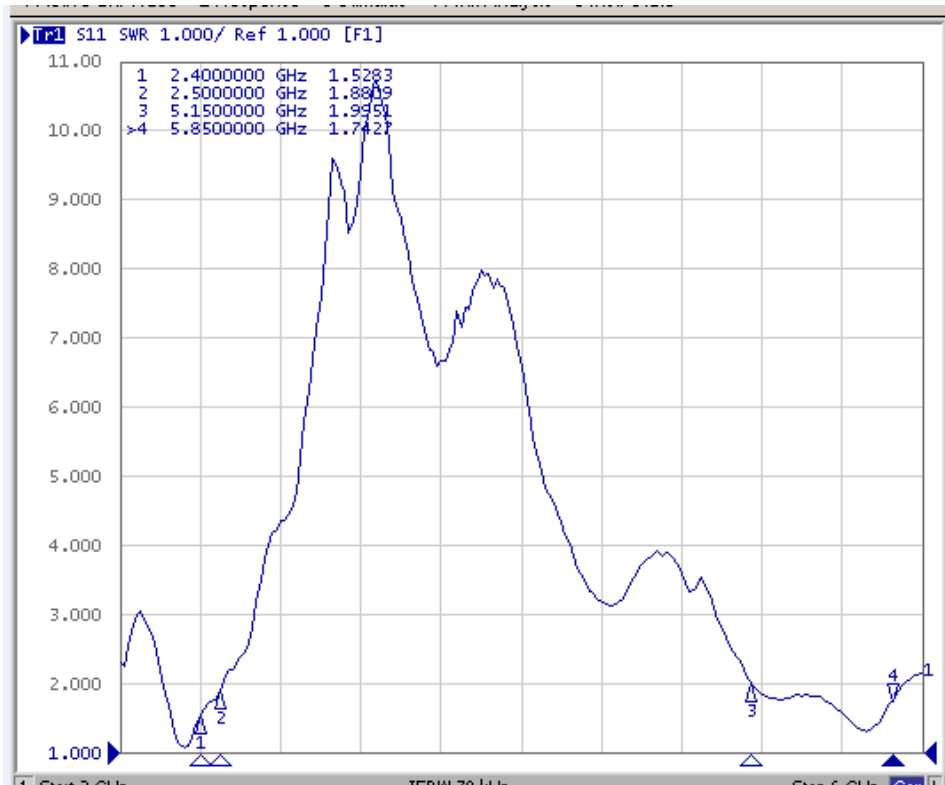
3 . 4G FPC Antenna Performance Parameters

Electrical Specifications		Mechanical properties	
Product name:	WIFI-FPC Dual Frequency Antenna	Size:	58×15mm
Frequency range:	2400-2500MHz 5150-5850MHz	Antenna material:	FPC
Input impedance:	50Ω	Connector:	IPEX
V.S.W.R:	≤2	Cable length:	80mm
Polarization:	Vertical	Cable:	RF 1.13
Directivity:	Omnidirectional	Operatin Temp	-40°C~80°C
GAIN	>0dBi	Storing Temp	-45°C~85°C

4 . Product Dimension Diagram (unit: mm)



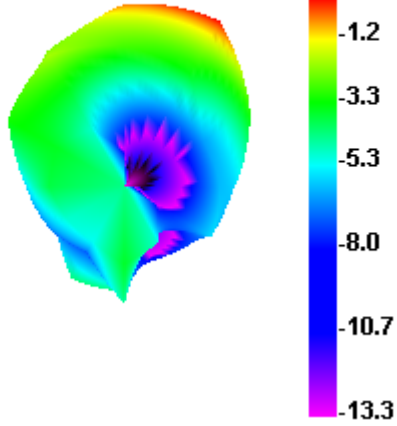
5. Product VSWR Test Diagram



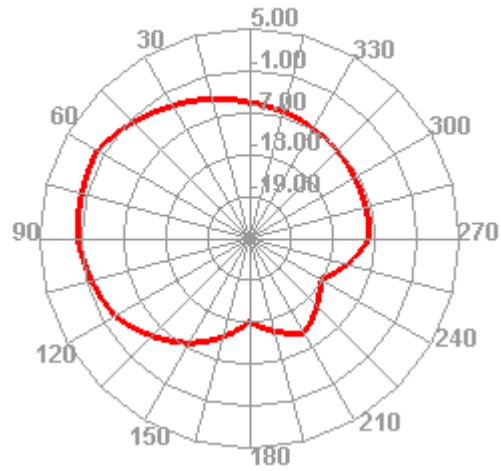
6. Product Gain efficiency test data

Passive Test For 2400-2500			Passive Test For 5150-5850		
Freq (MHz)	Effi (%)	Gain (dBi)	Freq (MHz)	Effi (%)	Gain (dBi)
2400	44.79	0.09	5150	46.07	2.98
2410	43.49	0.24	5220	50.8	2.1
2420	42.33	0.42	5290	39.70	1.33
2430	43.93	0.11	5360	47.38	2.94
2440	46.81	0.38	5430	64.99	2.83
2450	49.91	0.96	5500	53.78	2.82
2460	42.06	1.59	5570	52.03	2.39
2470	46.49	0.97	5640	44.08	2.95
2480	42.25	1.92	5710	49.17	2.37
2490	47.93	1.2	5780	50.34	2.3
2500	37.77	1.16	5850	51.14	2.32

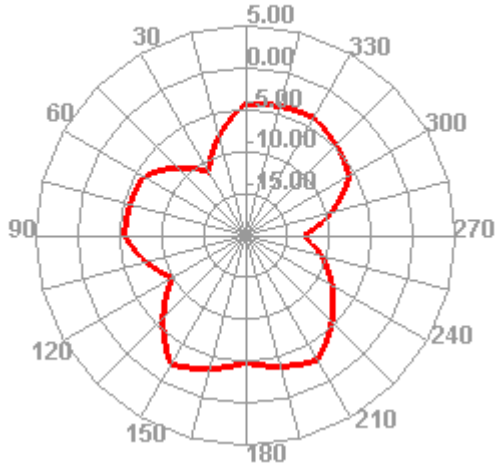
2400.000MHz



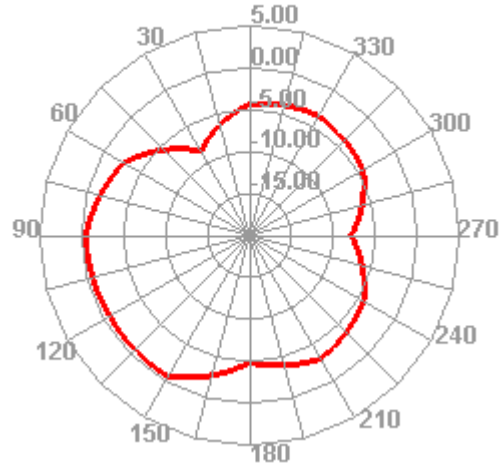
2400.000MHz H



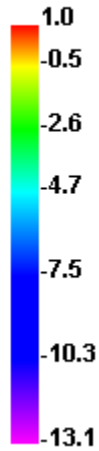
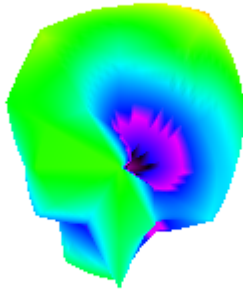
2400.000MHz E1



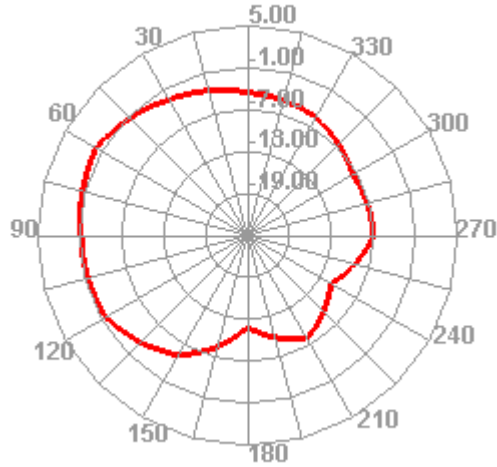
2400.000MHz E2



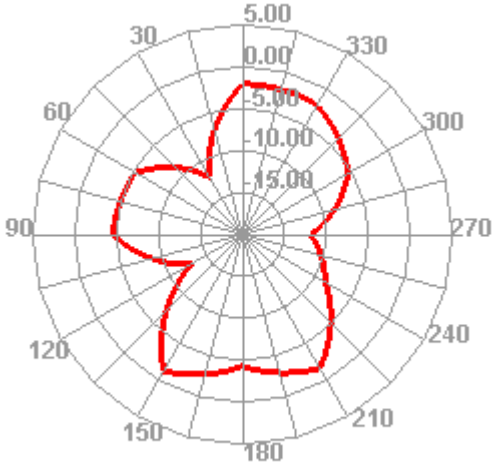
2450.000MHz



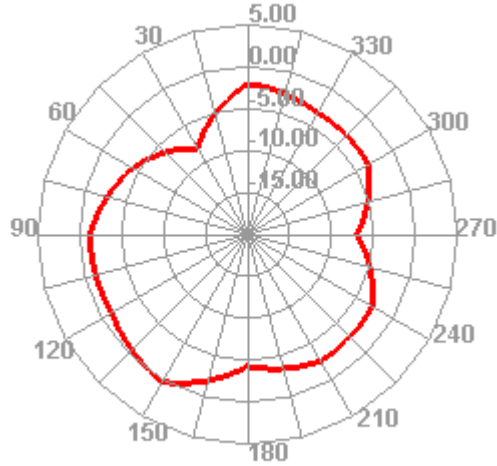
2450.000MHz H



2450.000MHz E1

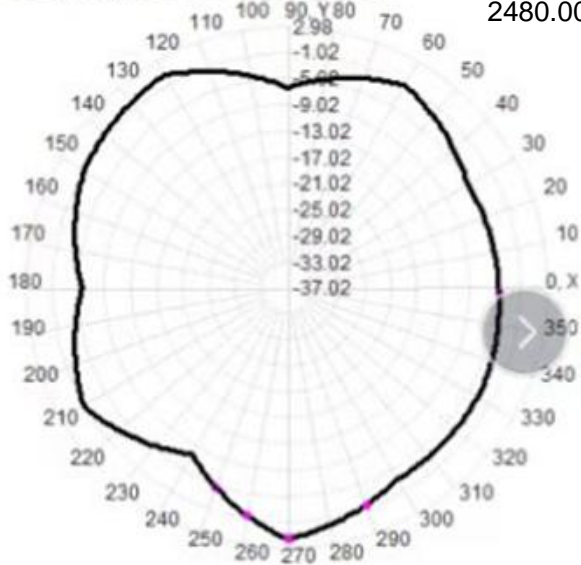


2450.000MHz E2

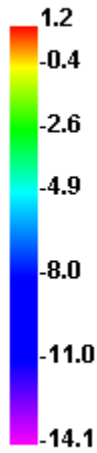
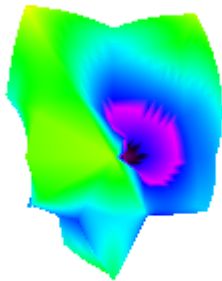


Total(H-XY), Max= 1.92 dB, CirD=9.10

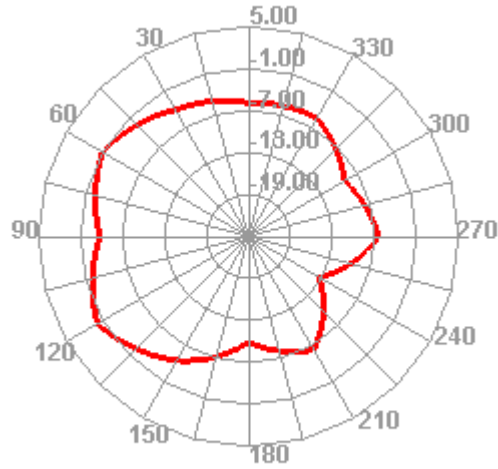
2480.000MHz



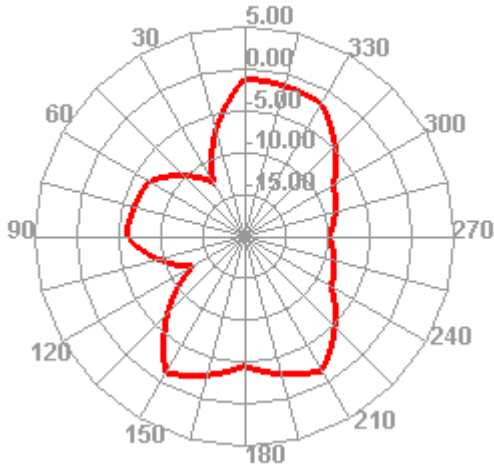
2500.000MHz



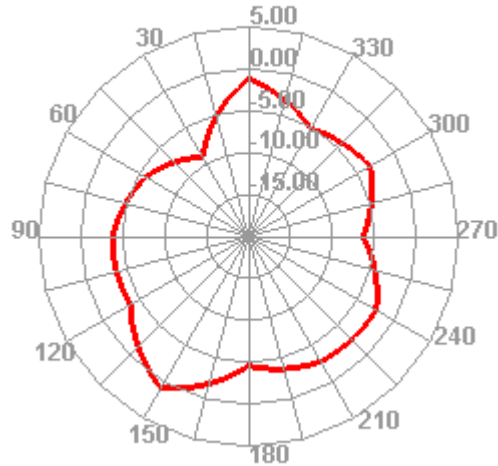
2500.000MHz H



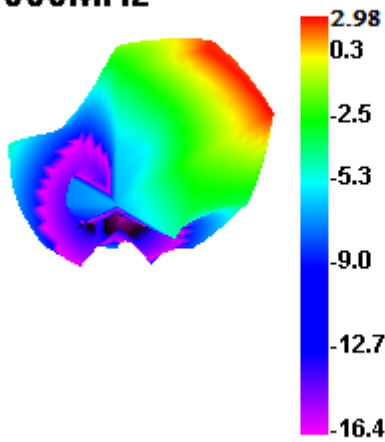
2500.000MHz E1



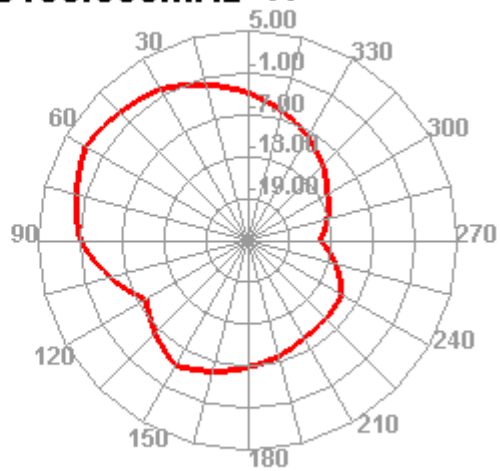
2500.000MHz E2



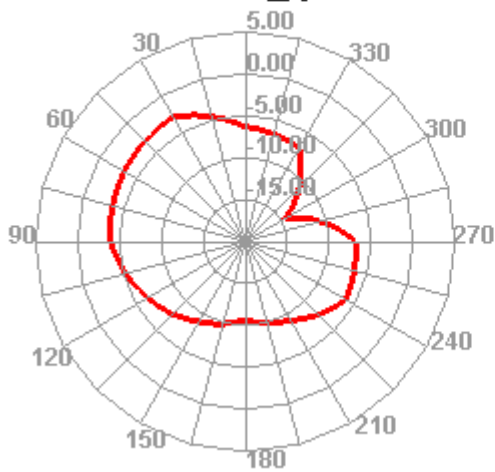
5150.000MHz



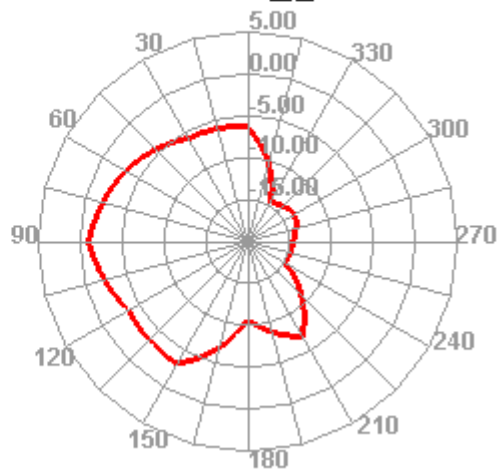
5150.000MHz H



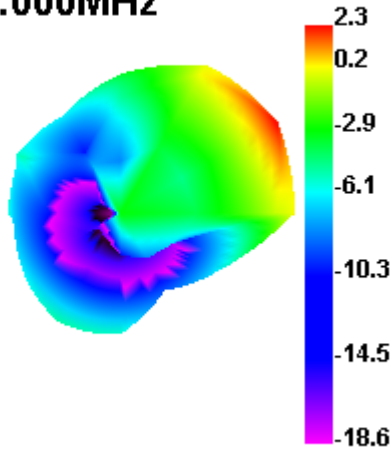
5150.000MHz E1



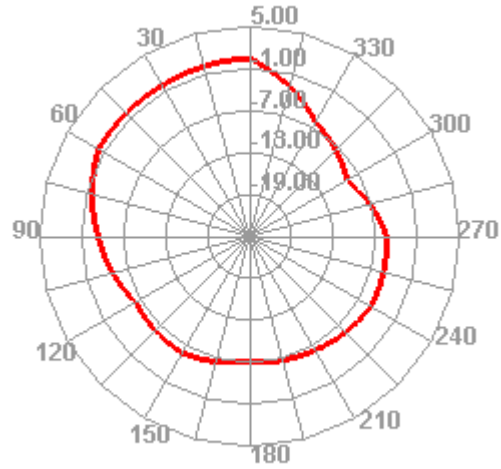
5150.000MHz E2



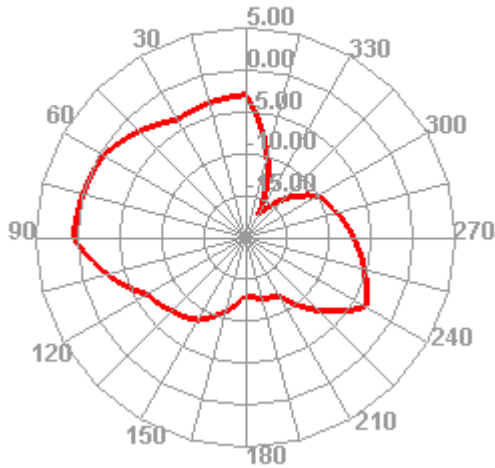
5850.000MHz



5850.000MHz H



5850.000MHz E1



5850.000MHz E2

