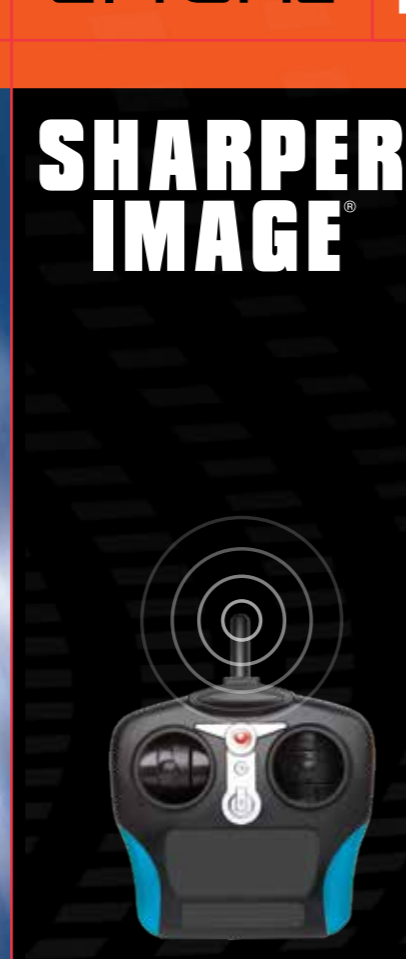


ART DEPARTMENT	
Job # / Filename	2018-10-24_RC_Boat_Assort_01020
Product Line	Product Line
Brand Manager	Brand Manager
Designer	Lina Naganoto
Finished Size	16.5" L x 8.07" D x 6.1" H / 42cm L x 20.5cm D x 15.5cm H
File Name	2018-10-24_RC_Boat_Assort_01020
File Format	PDF
Color (Spot or CMYK)	4 Color Process
Number of Copies	4
Comments	
Printed / Produced / Finishing	Printing / Finishing
Make (P) / Coating	Coating

© 2018 Sharp Corporation. All rights reserved. Sharp and the Sharp logo are trademarks of Sharp Corporation in the United States and other countries. Sharp is a registered trademark of Sharp Corporation. Sharp Corporation is not responsible for any damage to property or persons caused by the use of this product. Sharp Corporation is not responsible for any damage to property or persons caused by the use of this product. Sharp Corporation is not responsible for any damage to property or persons caused by the use of this product.



BATTERY OPERATED PLAY VEHICLE
AGES 8 AND UP
WARNING!
CHOKING HAZARD
 Small parts. Not suitable for children under 3 years.

WIRELESS RC ACTION!
2.4 GHz
 RACE MULTIPLE VEHICLES
 QUICKER RESPONSE
 LONG-DISTANCE RACING



Battery operated RC boat racer
2.4GHz

BATTERY OPERATED RC BOAT RACERS

BATTERY OPERATED RC BOAT RACERS

KEEP THIS PACKAGE FOR REFERENCE. SEE CONTAINS IMPORTANT INFORMATION.

BATTERY INSTALLATION: 1. Insert the battery into the battery compartment. 2. Make sure the battery is inserted correctly. 3. Close the battery compartment cover.

SAFETY PRECAUTIONS: 1. Do not use damaged or worn batteries. 2. Do not use damaged or worn RC boats. 3. Do not use damaged or worn remote controls. 4. Do not use damaged or worn propellers. 5. Do not use damaged or worn gears. 6. Do not use damaged or worn motors. 7. Do not use damaged or worn ESCs. 8. Do not use damaged or worn servos. 9. Do not use damaged or worn receivers. 10. Do not use damaged or worn transmitters. 11. Do not use damaged or worn antennas. 12. Do not use damaged or worn horns. 13. Do not use damaged or worn lights. 14. Do not use damaged or worn speakers. 15. Do not use damaged or worn speakers.

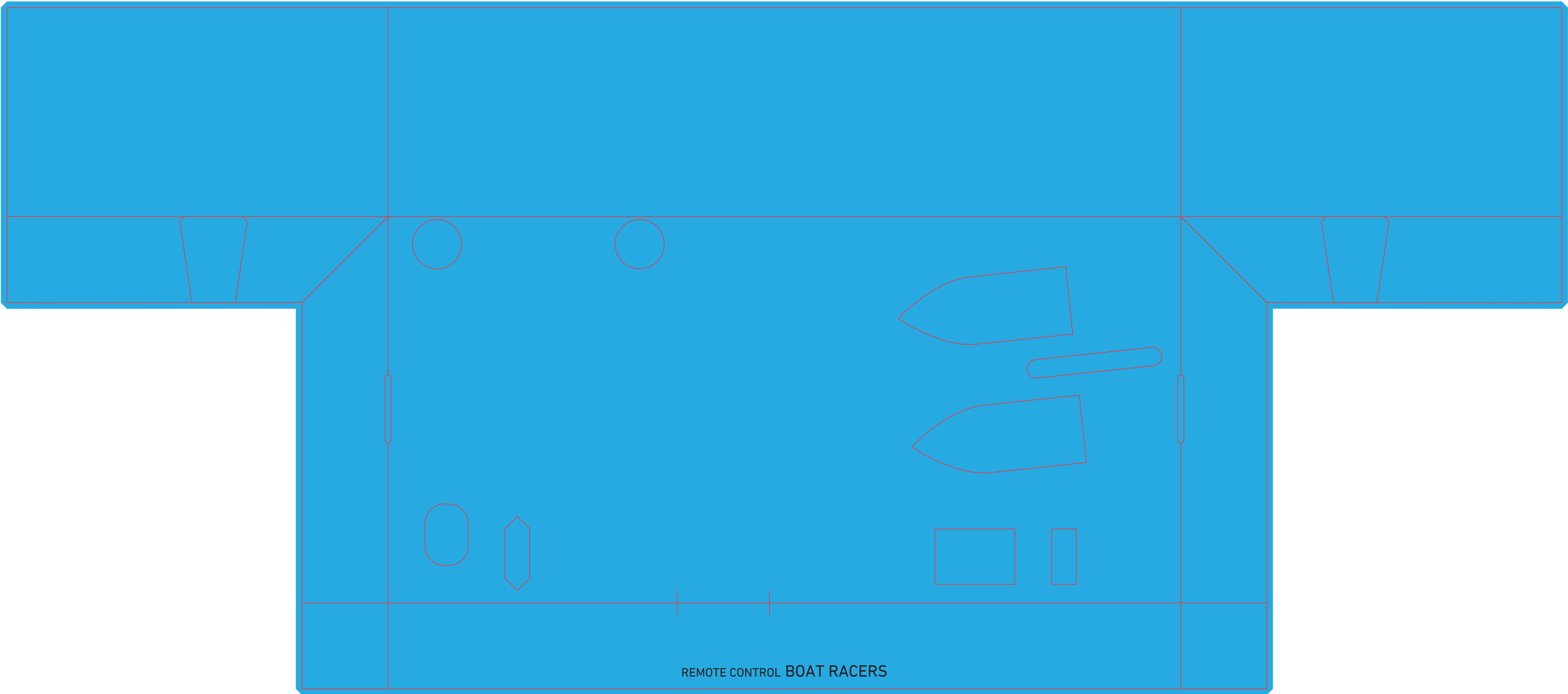
RC OPERATIONAL CONTROLS: 1. Turn on the power switch. 2. Turn on the receiver. 3. Turn on the transmitter. 4. Turn on the antenna. 5. Turn on the horn. 6. Turn on the light. 7. Turn on the speaker. 8. Turn on the speaker.

LEW JETTISON: 1. Turn on the power switch. 2. Turn on the receiver. 3. Turn on the transmitter. 4. Turn on the antenna. 5. Turn on the horn. 6. Turn on the light. 7. Turn on the speaker. 8. Turn on the speaker.

WARNING!
 Do not use damaged or worn batteries. Do not use damaged or worn RC boats. Do not use damaged or worn remote controls. Do not use damaged or worn propellers. Do not use damaged or worn gears. Do not use damaged or worn motors. Do not use damaged or worn ESCs. Do not use damaged or worn servos. Do not use damaged or worn receivers. Do not use damaged or worn transmitters. Do not use damaged or worn antennas. Do not use damaged or worn horns. Do not use damaged or worn lights. Do not use damaged or worn speakers. Do not use damaged or worn speakers.

CAUTION!
 Do not use damaged or worn batteries. Do not use damaged or worn RC boats. Do not use damaged or worn remote controls. Do not use damaged or worn propellers. Do not use damaged or worn gears. Do not use damaged or worn motors. Do not use damaged or worn ESCs. Do not use damaged or worn servos. Do not use damaged or worn receivers. Do not use damaged or worn transmitters. Do not use damaged or worn antennas. Do not use damaged or worn horns. Do not use damaged or worn lights. Do not use damaged or worn speakers. Do not use damaged or worn speakers.

000000 000000
 Made in China



REMOTE CONTROL BOAT RACERS