



Vanguard Protex Global
POWERED BY INNOVATION. SECURED BY EXPERIENCE.

TITAN L2QD

Wireless Charging



Installation Manual



TITAN L2QD Wireless Charging Installation Manual

Phone Security

TOOLS & PARTS NEEDED



* = Optional | # = Substitute W for White

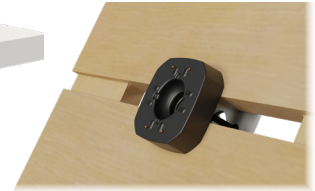
1

Both Angled and Vertical pedestals have the same installation steps.

Angled Pedestal



Vertical Pedestal



Lay the pedestal over the slot in the fixture and feed the power cable down. Hold the pedestal in place during this step.

2

Using the 2 provided screws and the V-T99, screw the metal plate with the rubber padding (K-1120) facing away from the counter. Make sure the rubber plate is facing out.



IMPORTANT: The thin power cable should NOT go through any of the holes on the plate.

3



Insert the sensor cable into the pedestal and out through the center of the metal plate. The power cable should feed out the side of the mounting plate.

4

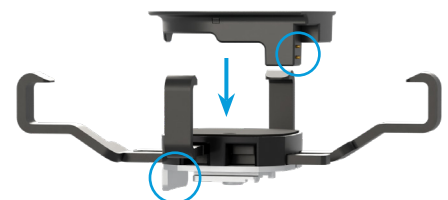


The VP-1644 cable stopper is installed behind the fixture. Open the stopper with a V-T41 security driver. Close the stopper in the groove at the end of the cable and tighten the screw again.



5

Loosen the security screw on the back of the bracket assembly with the V-T900 security driver.



Place the charging pad on the bracket.

IMPORTANT: Ensure proper orientation of the wireless housing puck. The metal ledge should be facing the opposite side of the 2 pins on the charging pad.

TITAN L2QD Wireless Charging Installation Manual

Phone Security

6

IMPORTANT: Ensure proper orientation of the bracket. The metal ledge should be facing the top of the phone.



Place the device and bracket face down on a flat surface. This holds the arms in place while tightening the screw. Align the bracket to the center of the device. Tighten the screw on the back of the bracket assembly with the security driver.

7



First, plug the wireless power coupler into the sensor. Then, slide the bracket onto the sensor until you hear a click.



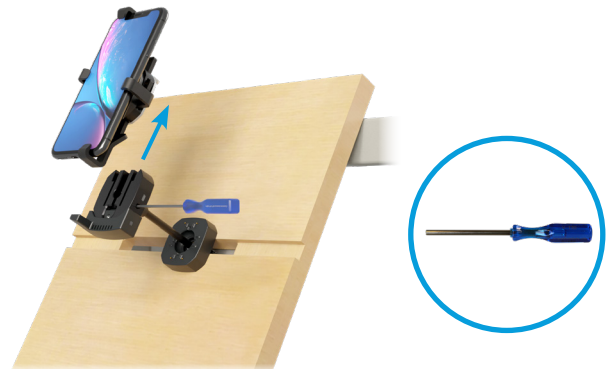
8



Plug the V-39 power supply into an AC outlet. Plug the V-39 cable into the barrel connector shown.

9

The sensor will have a red LED light indicating it is receiving power. The wireless power coupler will have a white LED light whenever the phone is being charged.



To release the bracket, insert the V-T30 driver into the bracket release. Turn gently counter-clockwise and slide the bracket off.

TITAN L2QD Wireless Charging Installation Manual

LED Functionality & Best Practices

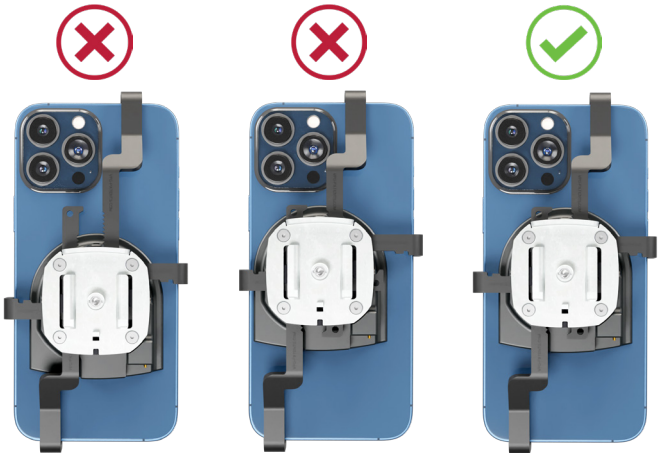
The Titan L2QD charges the device when at rest. When the device is lifted both LEDs will be off. When the device is resting on the pedestal, both LED's should be on (see chart for more details).



LED Behavior	TITAN L2QD Wireless Charging Status & Meaning
Steady solid red on sensor LED	Unit is at rest, and receiving power
Wireless power coupler LED is solid white .	Unit is charging the device properly at rest
Both the wireless power coupler LED and sensor LED are off	Unit is not receiving power: sensor is being lifted OR the unit is not connected to the V-39 power supply OR the power supply is not plugged into a live outlet
Wireless power coupler LED is flashing white	The unit is not properly charging the device; the device should be reoriented
Sensor LED is solid red and the wireless power coupler's LED is off	Bracket assembly is not firmly seated and locked into the sensor OR the device is not properly oriented in the bracket assembly

Proper Bracket Alignment

For best results, make sure the bracket is evenly centered on the device. If the wireless power coupler LED is flashing white, the charging pad is not properly aligned with the device. Loosen the bracket arms and reorient the device on bracket until the LED is solid white while at rest.



FCC E FCC REGULATIONS - THIS DEVICE COMPLIES WITH PART 18 OF THE FCC RULES. OPERATION IS SUBJECT TO THE FOLLOWING TWO CONDITIONS: (1) THIS DEVICE MAY NOT CAUSE HARMFUL INTERFERENCE, AND (2) THIS DEVICE MUST ACCEPT ANY INTERFERENCE RECEIVED, INCLUDING INTERFERENCE THAT MAY CAUSE UNDESIRABLE OPERATION.
NOTE: THE GRANTEE IS NOT RESPONSIBLE FOR ANY CHANGES OR MODIFICATIONS NOT EXPRESSLY APPROVED BY THE PARTY RESPONSIBLE FOR COMPLIANCE. SUCH MODIFICATIONS COULD VOID THE USER'S AUTHORITY TO OPERATE THE EQUIPMENT.

ISED: THIS DEVICE CONTAINS LICENSE-EXEMPT TRANSMITTER(S)/RECEIVER(S) THAT COMPLY WITH INNOVATION, SCIENCE AND ECONOMIC DEVELOPMENT CANADA'S LICENSE-EXEMPT RSS(S). OPERATION IS SUBJECT TO THE FOLLOWING TWO CONDITIONS: 1. THIS DEVICE MAY NOT CAUSE INTERFERENCE. 2. THIS DEVICE MUST ACCEPT ANY INTERFERENCE, INCLUDING INTERFERENCE THAT MAY CAUSE UNDESIRABLE OPERATION OF THE DEVICE.

CET APPAREIL CONTIENT UN OU DES ÉMETTEURS/RÉCEPTEURS EXEMPTS DE LICENCE CONFORMES AUX RSS EXEMPTS DE LICENCE D'INNOVATION, SCIENCES ET DÉVELOPPEMENT ÉCONOMIQUE CANADA. SON FONCTIONNEMENT EST SOUMIS AUX DEUX CONDITIONS SUIVANTES : 1. CET APPAREIL NE DOIT PAS PROVOQUER D'INTERFÉRENCES. 2. CET APPAREIL DOIT ACCEPTER TOUTES LES INTERFÉRENCES, Y COMPRIS LES INTERFÉRENCES POUVANT ENTRAÎNER UN FONCTIONNEMENT INDÉSIRABLE DE L'APPAREIL.

