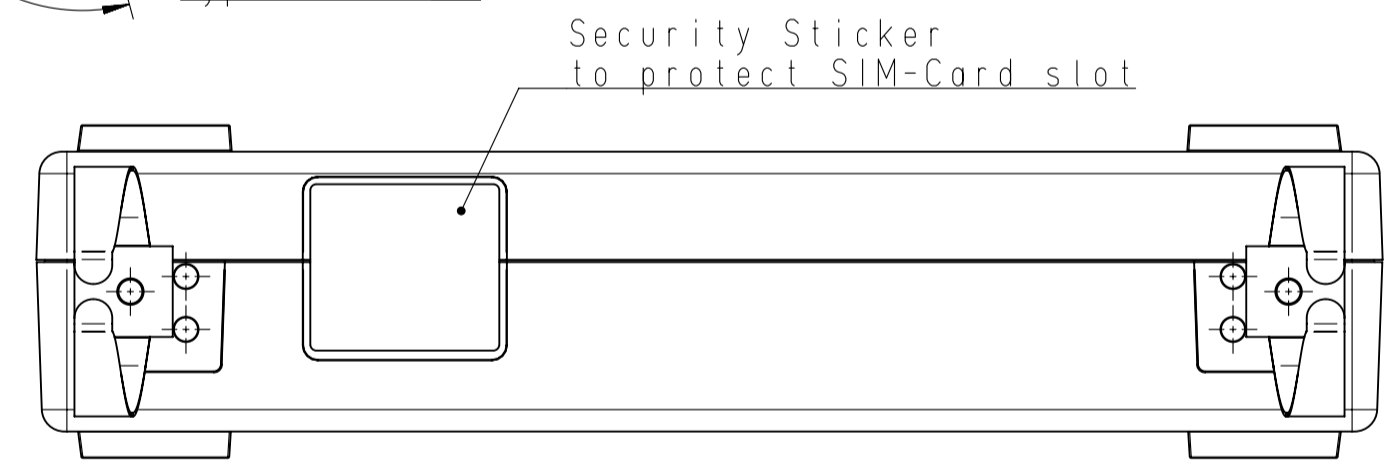
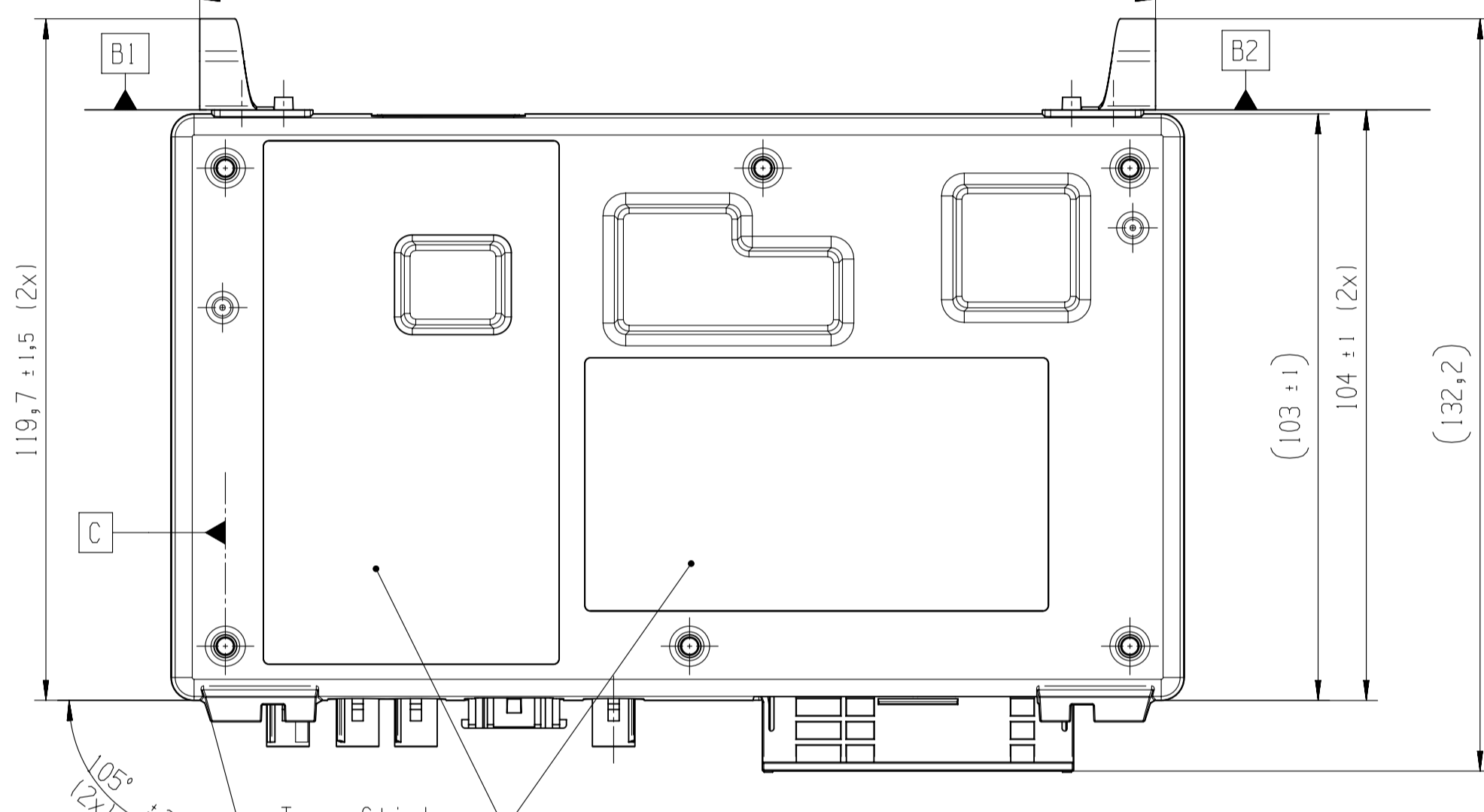


Receptor Pins	Function
1	KL.30 (UBAT)
2	KL.30 (UBAT)
3	CAN3_GND
4	CAN3_L
5	KL.15 (IGNITION)
6	CAN1_GND
7	CAN1_GND
8	DIGITAL_IN4_GND
9	DIGITAL_IN3
10	VOLTAGE_MEASURE_GND
11	
12	RS232_1_TXD
13	RS232_1_RXD
14	RS232_1_CTS
15	RS232_2_RTS
16	RS232_2_CTS
17	LS_SWITCH_2_GND
18	LS_SWITCH_2
19	KL.31 (GND_Z)
20	KL.31 (GND_Z)
21	CAN3_H
22	CAN2_GND
23	CAN2_GND
24	CAN1_H
25	DIGITAL_IN5_GND
26	DIGITAL_IN4
27	DIGITAL_IN2_GND
28	DIGITAL_IN1
29	RS232_3_TXT
30	RS232_3_GND
31	RS232_1_RTS
32	RS232_3_RTS
33	RS232_2_RXD
34	RS232_2_TXD
35	LS_SWITCH_1_GND
36	LS_SWITCH_1
37	KL.31 (GND_Z)
38	KL.31 (GND_Z)
39	CAN3_GND
40	CAN2_H
41	CAN2_L
42	CAN1_L
43	DIGITAL_IN5
44	DIGITAL_IN3_GND
45	DIGITAL_IN2
46	DIGITAL_IN1_GND
47	VOLTAGE_MEASURE
48	RS232_3_CTS
49	RS232_3_RXD
50	
51	RS232_1_GND
52	RS232_2_GND
53	K_LINE
54	



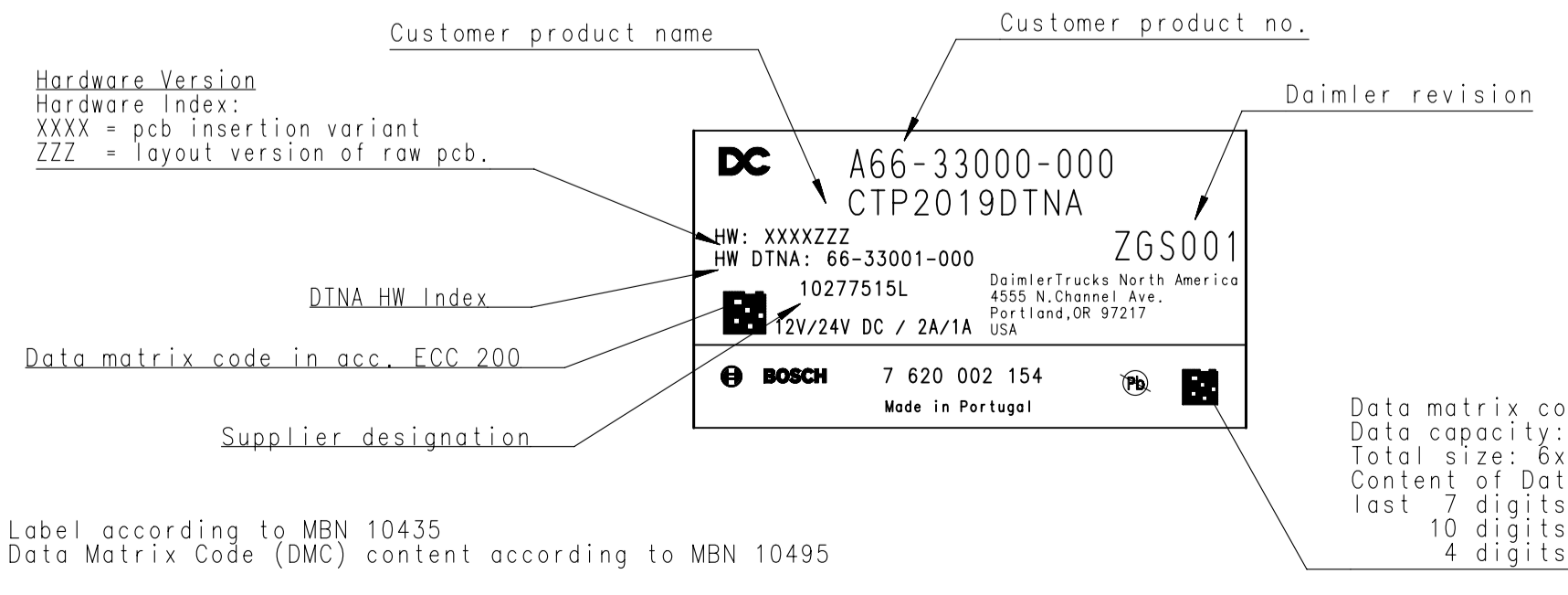
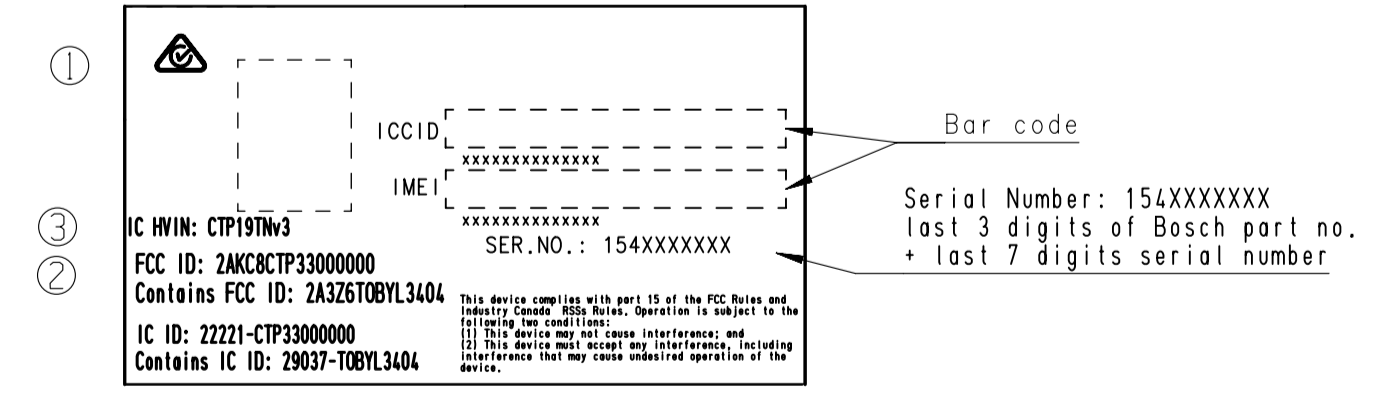
MATERIALS
COVER: GD AISi9Cu3 DIN 1706 or ADC 12 lead free
BASE PLATE: GD AISi9Cu3 DIN 1706 or ADC 12 lead free
SPRING: DIN EN 10088 1.4310 (X10CrNi18-8 K1)
SCREW: DIN 10263, 1.5525, Plating: Zn-Ni
CONNECTORS: Main-Connector: Company: Tyco
 Housing: PA46-GF30
 Contacts: CuFe2P and CuMg0.1 / Plating Sn over Ni
 USB-Connector: Company: Molex
 Housing SPS, glass filled
 Contacts: Copper alloy / Plating: Au over Ni
 Shell: Copper alloy / Plating: Tin over Ni
 Fakra-Connectors: Company: Rosenberger
 Housing: PA 6T/66
 Dielectric: PA 6T/66
 Center contact: Brass / Plating: AuroDur® gold plated
 Outer contact: Zinc alloy / Plating Tin over Ni

The Daimler product specification A 003 009 62 99 for housing size 3 has to be considered.
 Spring constant of the retaining spring (based on two springs): 20N/mm ± 5 N/mm
 1. Spring deflection 3mm --->
 Spring force based on two springs: 60N ± 15N
 2. Spring deflection 5mm --->
 Spring force based on two springs: 100N ± 25N

Nominal voltage: 12V or 24V
Test voltage: 24V
Operating voltage: 8V - 32V (with restrictions below 9V)
Operating temperature: -40°C to 60°C (full operation, see also CTP-4958, CTP-3856)
Operating temperature: 60°C to 75°C (limited operation, CAN alive until components are at max. temp. of 85°C)
Storage temperature: -40°C to 85°C
Type of protection: IP30 in accordance with DIN EN 60529 (applies for the connectors), IP31 in accordance with DIN EN 60529 (excluded the connectors but with possibly refurbishment for further use)

Weight ca.: 650g
 Set shown without package.
 This drawing gives only the most essential mounting measures.
 The given tolerances are for acceptance purposes.
 The addition of tolerances given in the part drawings result if applicable in other values.

Type Sticker (2 parts)



Draft
 15.08.2023

Size acc. to / Masse nach		ISO 14405-1:2010-12	
envelope principle /		Huellprinzip	
A			
The base plane "A" to be determined with 4 points			
031	3E1010617231	20230914	cpe2h
02	8E00A2582923	20230607	cpe2h
01	8E00A2582922	20230419	cpe2h
00	8E00A2894401	20220908	cpe2h
Ind.	Change/Mod.	YYYYMMDD	Drawn/Sez.
Treatment/Behandlung		Mitted Details/Fehlende Angaben	
Lang./Spr. en/de		From/Aus 7 620 002 154	
Night./Gew. 650 g		Sheet/Bl. 1 / 1	
Drit. P. Scale/A.stab 1:1		Doc. type TKU	
MNR		Repl. For	

© Daimler, Bosch, etc. All rights reserved. Also regarding the use of the drawings for other purposes without the written consent of Daimler, Bosch, etc. is prohibited.