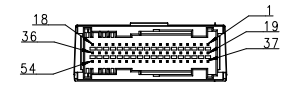
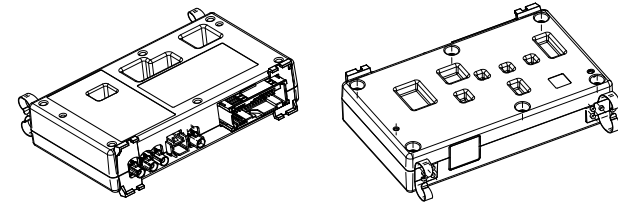
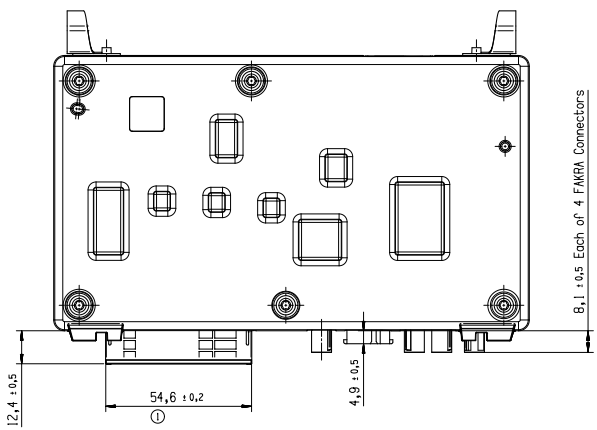
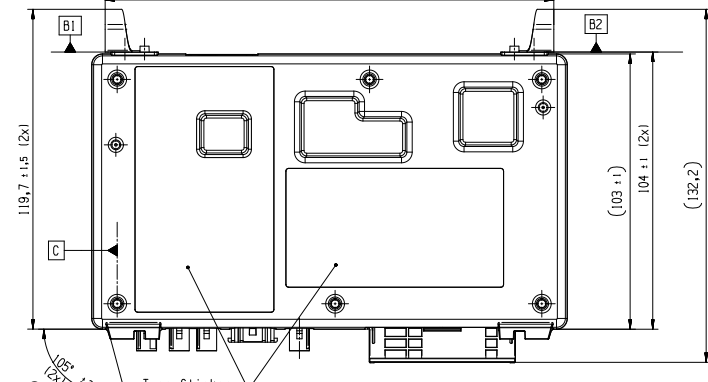
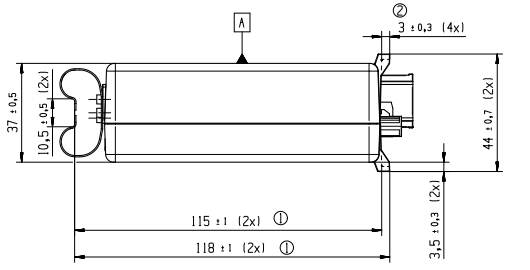
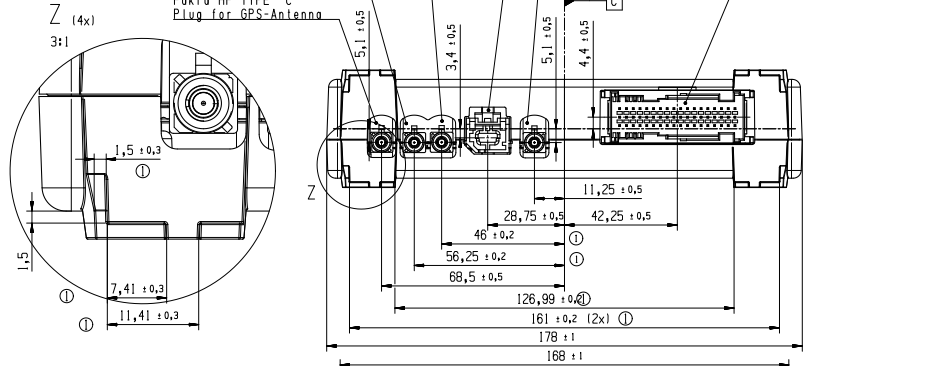
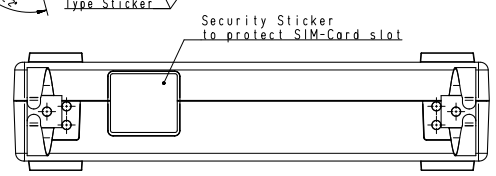


USCAR USB-Header (Type Mini-B)  
 Fakra HF TYPE \*N\* Plug for GSM-Antenna  
 Fakra HF TYPE \*D\* Plug for GSM-Antenna  
 Fakra HF TYPE \*C\* Plug for GPS-Antenna  
 Fakra HF TYPE \*I\* Plug for BT/WLAN-Antenna  
 Tyco Header, 54 pins Coding B



Receptor Pins	Function
1	KL.30 (UBAT)
2	KL.30 (UBAT)
3	CAN3_GND
4	CAN3_L
5	KL.15 (IGNITION)
6	CAN1_GND
7	CAN1_GND
8	DIGITAL_IN4_GND
9	DIGITAL_IN3
10	VOLTAGE_MEASURE_GND
11	
12	RS232_1_TXD
13	RS232_1_RXD
14	RS232_1_CTS
15	RS232_2_RTS
16	RS232_2_CTS
17	LS_SWITCH_2_GND
18	LS_SWITCH_2
19	KL.31 (GND_Z)
20	KL.31 (GND_Z)
21	CAN3_H
22	CAN2_GND
23	CAN2_GND
24	CAN1_H
25	DIGITAL_IN5_GND
26	DIGITAL_IN4
27	DIGITAL_IN2_GND
28	DIGITAL_IN1
29	RS232_3_TXT
30	RS232_3_GND
31	RS232_1_RTS
32	RS232_3_RTS
33	RS232_2_RXD
34	RS232_2_TXD
35	LS_SWITCH_1_GND
36	LS_SWITCH_1
37	KL.31 (GND_Z)
38	KL.31 (GND_Z)
39	CAN3_GND
40	CAN2_H
41	CAN2_L
42	CAN1_L
43	DIGITAL_IN5
44	DIGITAL_IN3_GND
45	DIGITAL_IN2
46	DIGITAL_IN1_GND
47	VOLTAGE_MEASURE
48	RS232_3_CTS
49	RS232_3_RXD
50	
51	RS232_1_GND
52	RS232_2_GND
53	K_LINE
54	



**MATERIALS**  
**COVER:** GD AISi9Cu3 DIN 1706 or ADC 12 lead free  
**BASE PLATE:** GD AISi9Cu3 DIN 1706 or ADC 12 lead free  
**SPRING:** DIN EN 10088 1.4310 (X10CrNi18-8 K1)  
**SCREW:** DIN 10263, 1.5525, Plating: Zn-Ni

**CONNECTORS:** Main-Connector: Company: Tyco  
 Housing: PA46-GF30  
 Contacts: CuFe2P and CuMg0.1 / Plating Sn over Ni  
 USB-Connector: Company: Molex  
 Housing: SPS, glass filled  
 Contacts: Copper alloy / Plating: Au over Ni  
 Shell: Copper alloy / Plating: Tin over Ni  
 Fakra-Connectors: Company: Rosenberger  
 Housing: PA 6T/66  
 Dielectric: PA 6T/66  
 Center contact: Brass / Plating: AuroDur® gold plated  
 Outer contact: Zinc alloy / Plating Tin over Ni

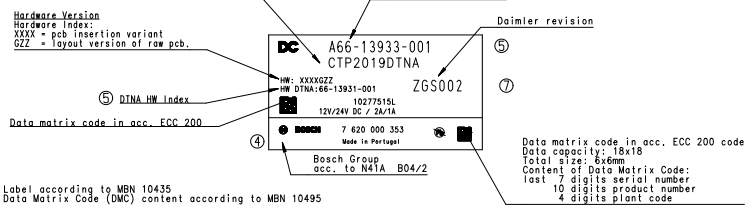
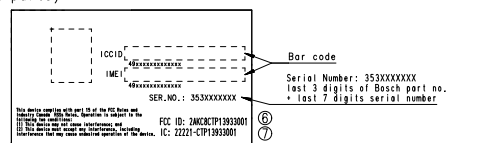
The Daimler product specification A 003 009 62 99 for housing size 3 has to be considered.  
 Spring constant of the retaining spring (based on two springs): 20N/mm ± 5 N/mm  
 1. Spring deflection 3mm --->  
 2. Spring force based on two springs: 60N ± 15N  
 Spring deflection 5mm --->  
 Spring force based on two springs: 100N ± 25N

**Nominal voltage:** 12V or 24V  
**Test voltage:** 24V  
**Operating voltage:** 8V - 32V (with restrictions below 9V)  
**Operating temperature:** -40°C to 60°C (full operation, see also CTP-4958, CTP-3856)  
**Operating temperature:** 60°C to 75°C (limited operation, CAN alive until components are at max. temp. of 85°C)  
**Storage temperature:** -40°C to 85°C  
**Type of protection:** IP30 in accordance with DIN EN 60529 (applies for the connectors), IP31 in accordance with DIN EN 60529 (excluded the connectors but with possibly refurbishment for further use)

**Weight ca.:** 650g  
 Set shown without package  
 This drawing gives only the most essential mounting measures.

The given tolerances are for acceptance purposes.  
 The addition of tolerances given in the part drawings result if applicable in other values.

Type Sticker (2 parts)



Size acc. to / Base nach ISO 14405-1:2010-12  
 envelope principle/  
 Hüllprinzip

Part No.	Part No.	QTY	Part No.	QTY	Part No.	QTY
0713E1001479601	20190110	1	0713E1001479601	1	2171CM-C1/ENP3	1
081A2473314	20190630	1	081A2473314	1	2171CM-C1/ENP3	1
051A2452621	20190614	1	051A2452621	1	2171CM-C1/ENP3	1
001---	20171106	1	001---	1	2170CM-C1/ENP3	1

Treatment	Change/rev.	Draw/Ver.	Checked/Überf.	Released/Freigegeben	Responsible/Verantwortl.	Date/Inhalt	Draw/Ver.

7 620 000 353

**BOSCH** CONTROL UNIT STEUERGERÄT

Doc. type TKU 7 620 000 353 EA 0001071

Scale/Verst. 1:1

Unit: US

Sheet/Bl. 1/1