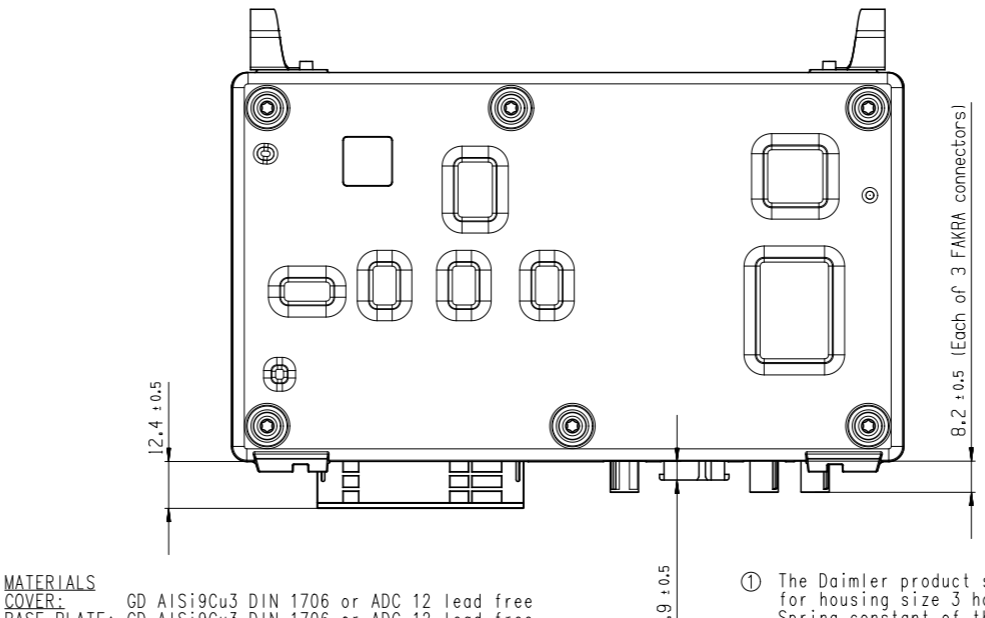
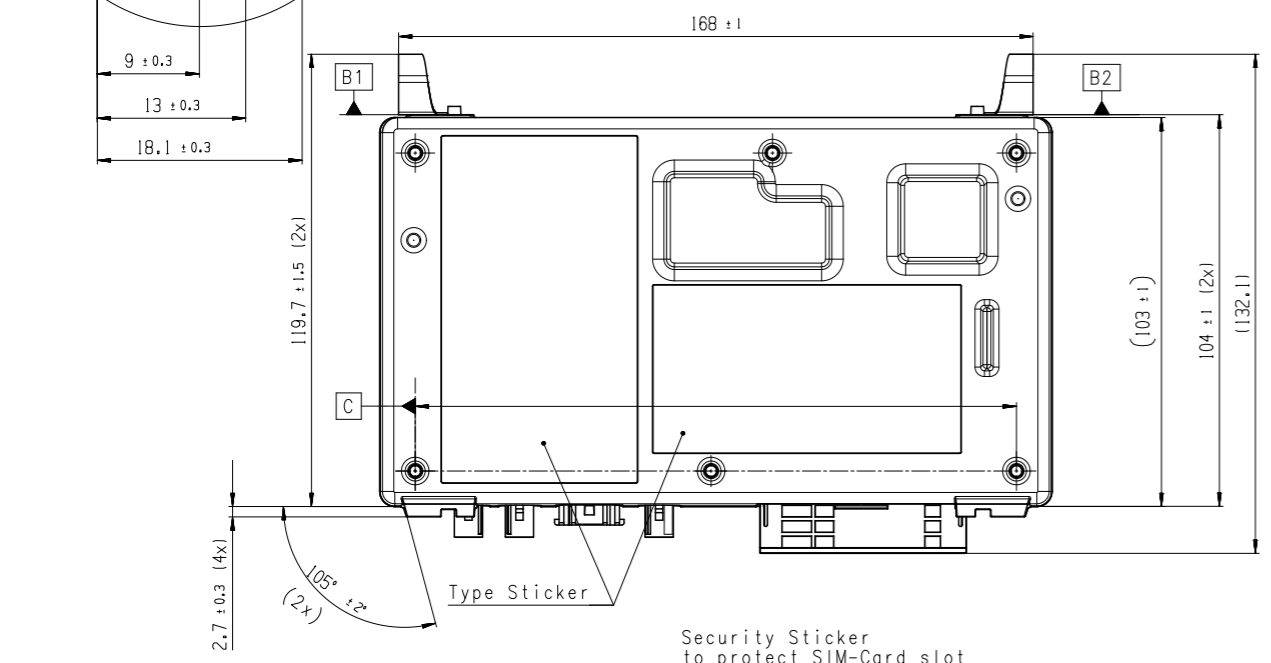


Receptor Pins	Function
1	KL.30 (UBAT)
2	KL.30 (UBAT)
3	CAN3_GND
4	CAN3_L
5	KL.15 (IGNITION)
6	CAN1_GND
7	CAN1_GND
8	DIGITAL_IN4_GND
9	DIGITAL_IN3
10	LINE_OUT_GND
11	LINE_OUT_RIGHT
12	RS232_DTE_TXD
13	RS232_DTE_RXD
14	RS232_DTE_CTS
15	RS232_RTS
16	RS232_CTS
17	LS_SWITCH_2_GND
18	LS_SWITCH_2
19	KL.31 (GND_Z)
20	KL.31 (GND_Z)
21	CAN3_H
22	CAN2_GND
23	CAN2_GND
24	CAN1_H
25	DIGITAL_IN5_GND
26	DIGITAL_IN3
27	DIGITAL_IN2_GND
28	DIGITAL_IN1
29	LINE_OUT_LEFT
30	VOLTAGE_MEASURE_GND
31	RS232_DTE_RTS
32	RS232_DTE_DTR
33	RS232_RXD_IN
34	RS232_TXD_OUT
35	LS_SWITCH_1_GND
36	LS_SWITCH_1
37	KL.31 (GND_Z)
38	KL.31 (GND_Z)
39	CAN3_GND
40	CAN2_H
41	CAN2_L
42	CAN1_L
43	DIGITAL_IN5
44	DIGITAL_IN3_GND
45	DIGITAL_IN2
46	DIGITAL_IN1_GND
47	VOLTAGE_MEASURE
48	RS232_DTE_DSR
49	RS232_DTE_DCD
50	RS232_DTE_RI
51	RS232_DTE_GND
52	RS232_GND
53	K_LINE
54	AUDIO_MUTE



**MATERIALS**  
**COVER:** GD AISi9Cu3 DIN 1706 or ADC 12 lead free  
**BASE PLATE:** GD AISi9Cu3 DIN 1706 or ADC 12 lead free  
**SPRING:** DIN EN 10088 1.4310 (X10CrNi18-8 K1)  
**SCREW:** DIN 10263, 1.5525, Plating: Zn-Ni  
**CONNECTORS:** Main-Connector: Company: Tyco  
 Housing: PA46-GF30  
 Contacts: CuFe2P and CuMg0.1 / Plating Sn over Ni  
 USB-Connector: Company: Molex  
 Housing SPS, glass filled  
 Contacts: Copper alloy / Plating: Au over Ni  
 Shell: Copper alloy / Plating: Tin over Ni  
 Fakra-Connectors: Company: Rosenberger  
 Housing: PA 6T/66  
 Dielectric: PA 6T/66  
 Center contact: Brass / Plating: AuroDur®, gold plated  
 Outer contact: Zinc alloy / Plating Tin over Ni

① The Daimler product specification A 003 009 62 99 for housing size 3 has to be considered. Spring constant of the retaining spring (based on two springs): 20N/mm ± 5 N/mm  
 1. Spring deflection 3mm -->  
 Spring force based on two springs: 60N ± 15N  
 2. Spring deflection 5mm -->  
 Spring force based on two springs: 100N ± 25N

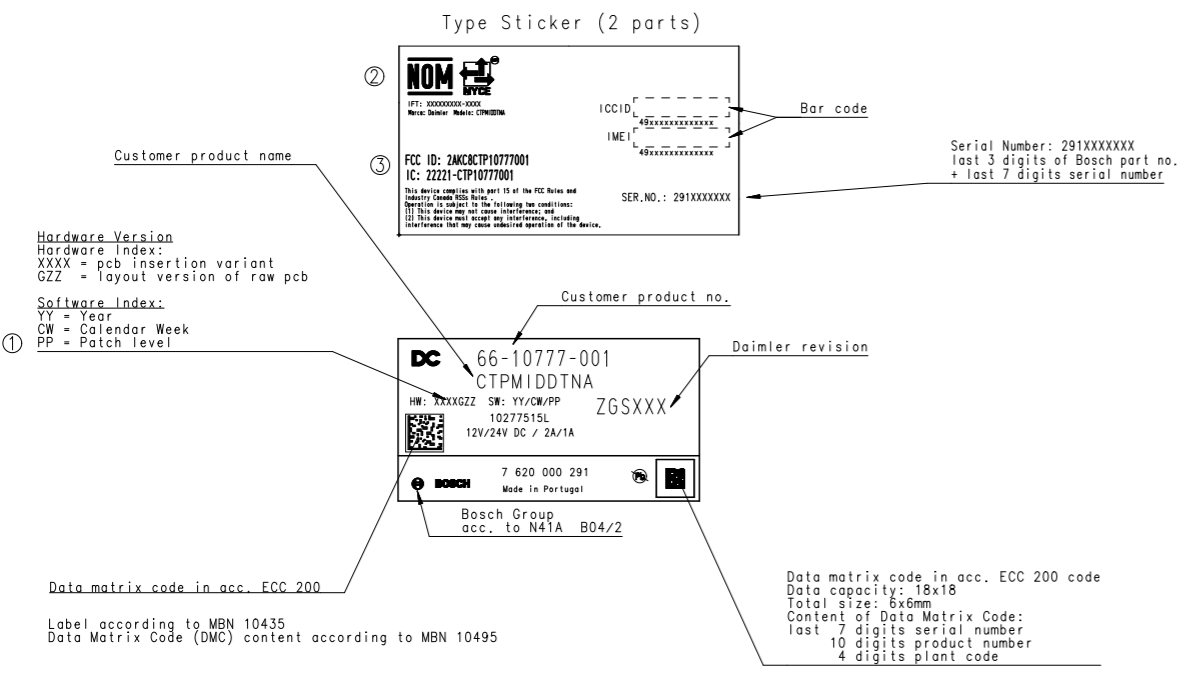
**Nominal voltage:** 12V or 24V  
**Test voltage:** 24V  
**Operating voltage:** 10.8V to 31.2V  
**Operating temperature:** -40°C to 60°C (full operation, see also CTP-4958, CTP-3856)  
**Operating temperature:** 60°C to 75°C (limited operation, CAN alive until components are at max. temp. of 85°C)  
**Storage temperature:** -40°C to 85°C  
**Type of protection:** IP30 in accordance with DIN EN 60529 (applies for the connectors), IP31 in accordance with DIN EN 60529 (excluded the connectors but with possibly refurbishment for further use)

**Weight ca.:** 650g

Set shown without package  
 This drawing gives only the most essential mounting measures.

The given tolerances are for acceptance purposes.  
 The addition of tolerances given in the part drawings result if applicable in other values.

▲ The base plane "A" to be determined with 4 points



Size acc. to / Masse nach ISO 14405-1:2010-12  
 envelope principle / Huelprinzip

031 A24595_02	20170927	cpe2h	vRiegen	.	2170	CM-C11/ENP3	.	.
02 A24595	20170822	cpe2h	vRiegen	.	2170	CM-C11/ENP3	.	.
01 A24367	20170626	cpe2h	vRiegen	.	2170	CM-C11/ENP3	.	.
00 A24367	20170614	cpe2h	vRiegen	.	2170	CM-C13/END	.	.

Ind. Change/Änd. YYYYMMDD Draw/Gez. Checked/Sp. Released/Freig. BWN Resp. dept./Verantw. Abt. Add. info./Zus. Info.

Treatment/Behandlung

Mat./Stoff

Lang./Spr. en/de

Ort. P. Scale/M.stab 1:1

MNR

FRONT

CONTROL UNIT STEUERGERAET

Doc. type TKU

7 620 000 291 EA

DR/ID 000

Ind. Format 03

Sheet/Bl. 1 / 1

Repl. by

© Robert Bosch GmbH. All rights reserved. Also registering this drawing as well as in the event of applications for industrial property rights.  
 © Robert Bosch GmbH. Alle Rechte vorbehalten. Auch registrieren dieses Zeichnung sowie auch in dem Fall von Schutzrechten dergleichen.