

Bluetooth USB Adapter

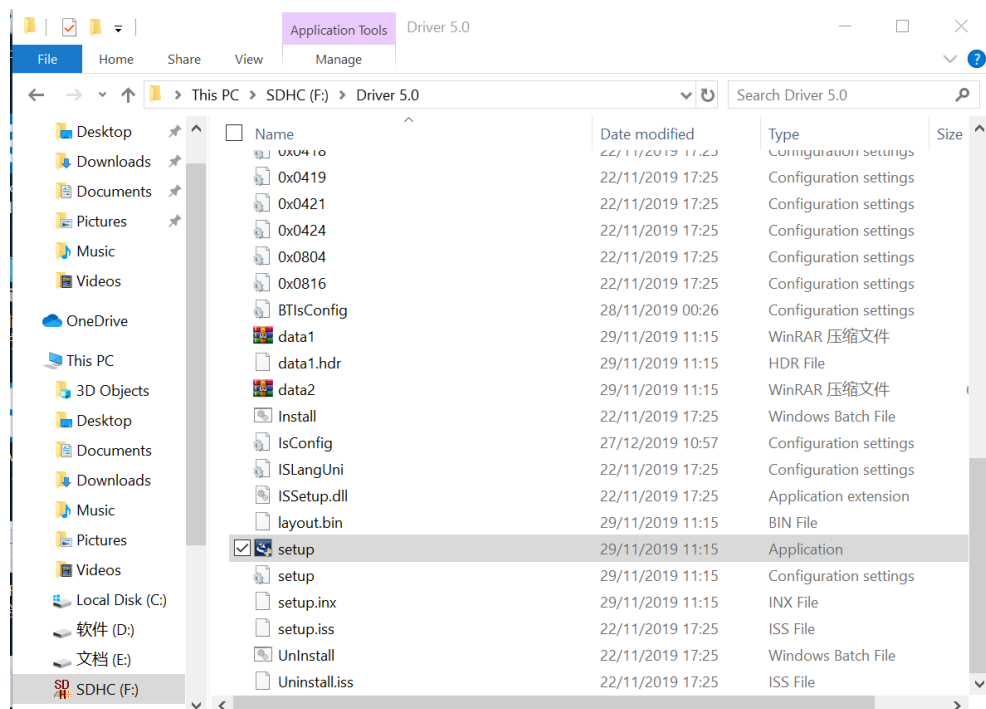
Model: BT-801

ShenZhen Shi Xin Hua Tian Technology Co.,LTD

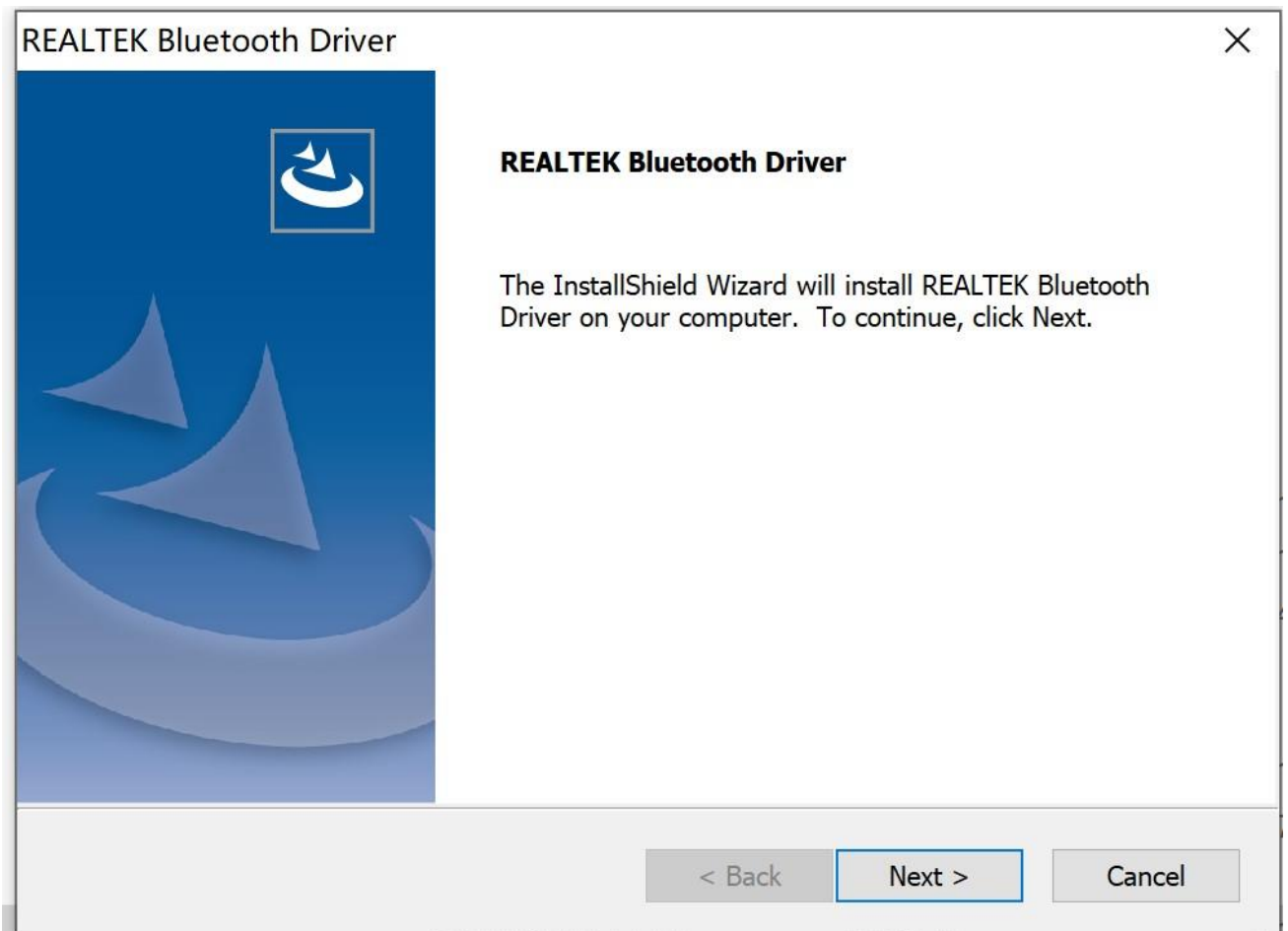
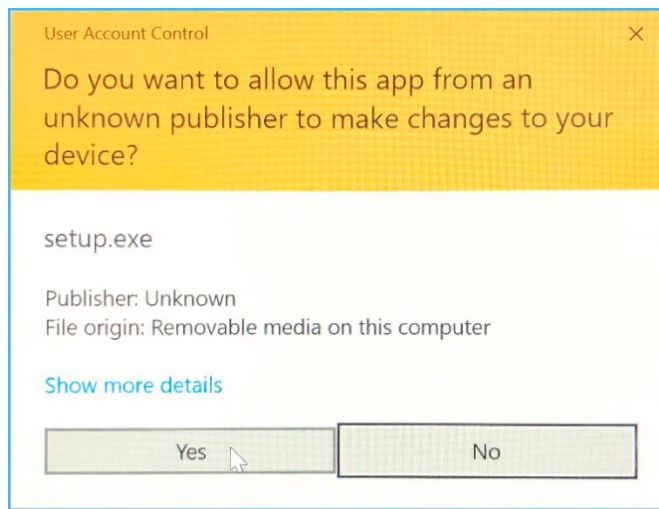
Installation Guide

Part 1,Take Windows 10 as an Example

1 . Connect Bluetooth adapter to computer, insert our disk which contains a driver file and double click **“Setup.exe”** to start



2. Select "Agree and Install the Bluetooth Driver" to start installation After the progress bar indicates it is done,It is done, Please restart the computer.





InstallShield Wizard Complete

The InstallShield Wizard has successfully installed REALTEK Bluetooth Driver. Before you can use the program, you must restart your computer.

Yes, I want to restart my computer now.

No, I will restart my computer later.

Remove any disks from their drives, and then click Finish to complete setup.

< Back

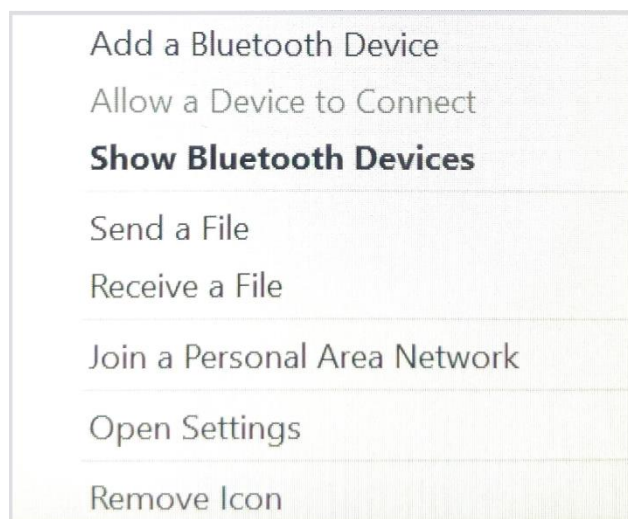
Finish

Cancel

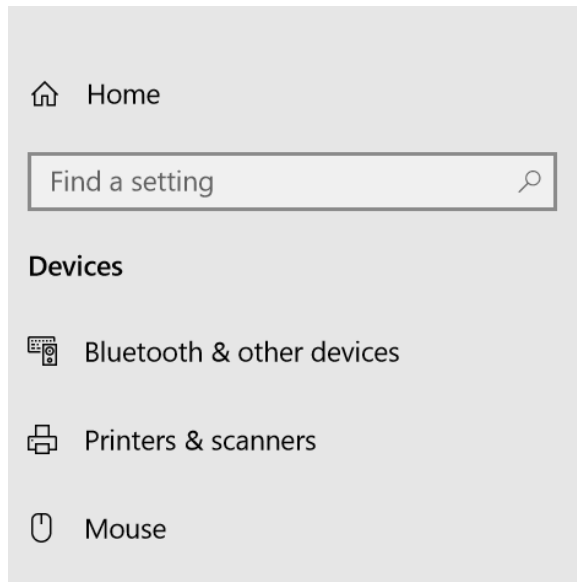
Part 2, Pair with Your Device via Bluetooth

1. Select the Bluetooth icon on bottom right of our system's tool bar, then right click to pullout a man bar.


Click "**Add a Bluetooth Device**"



2. Look through and select the Bluetooth device you want to pair with, Dual click the "Device", system will automatically start pairing, that means pairing process is done, Fell free to personalize settings at Control Interface.



Bluetooth & other devices

 Add Bluetooth or other device

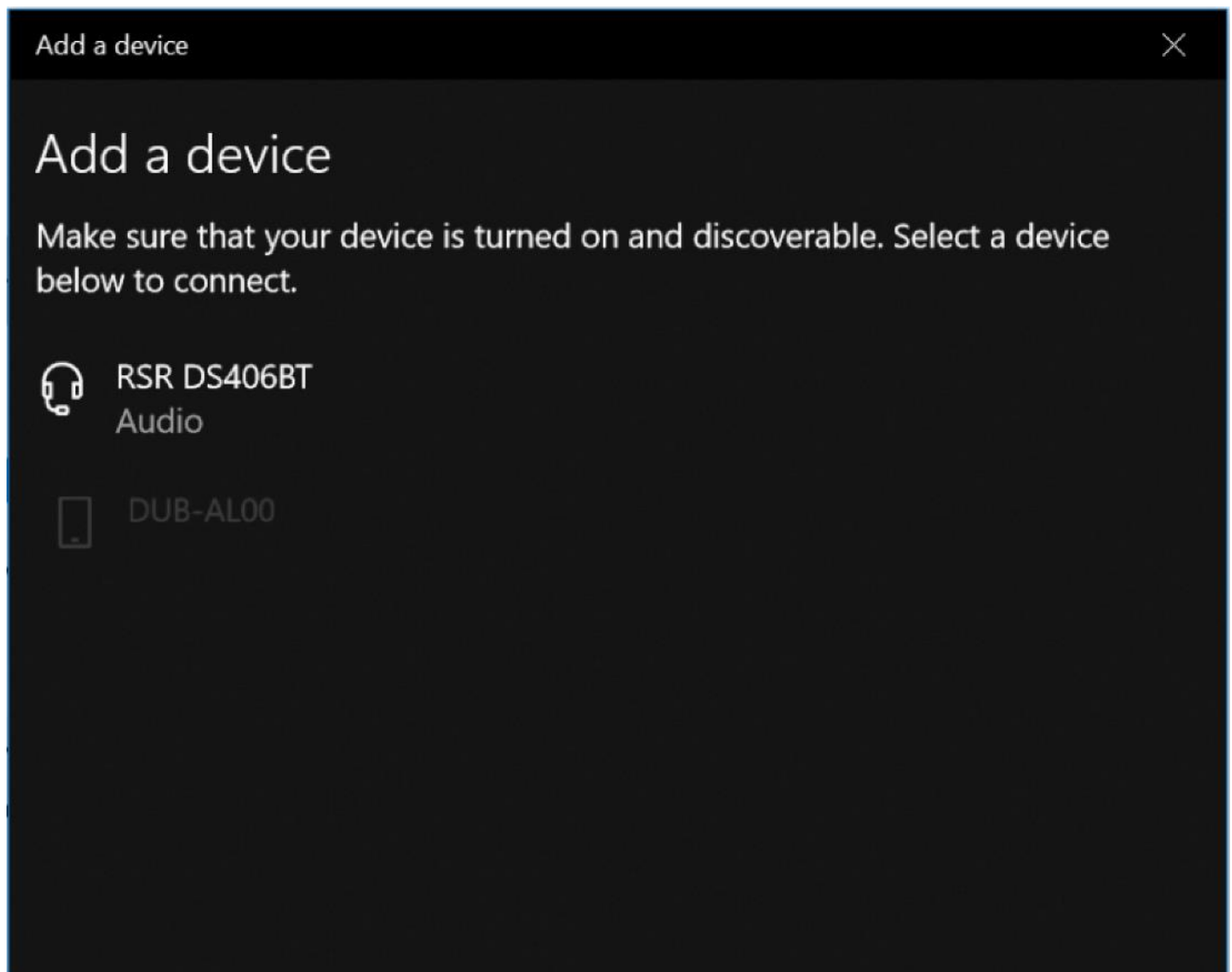
Bluetooth

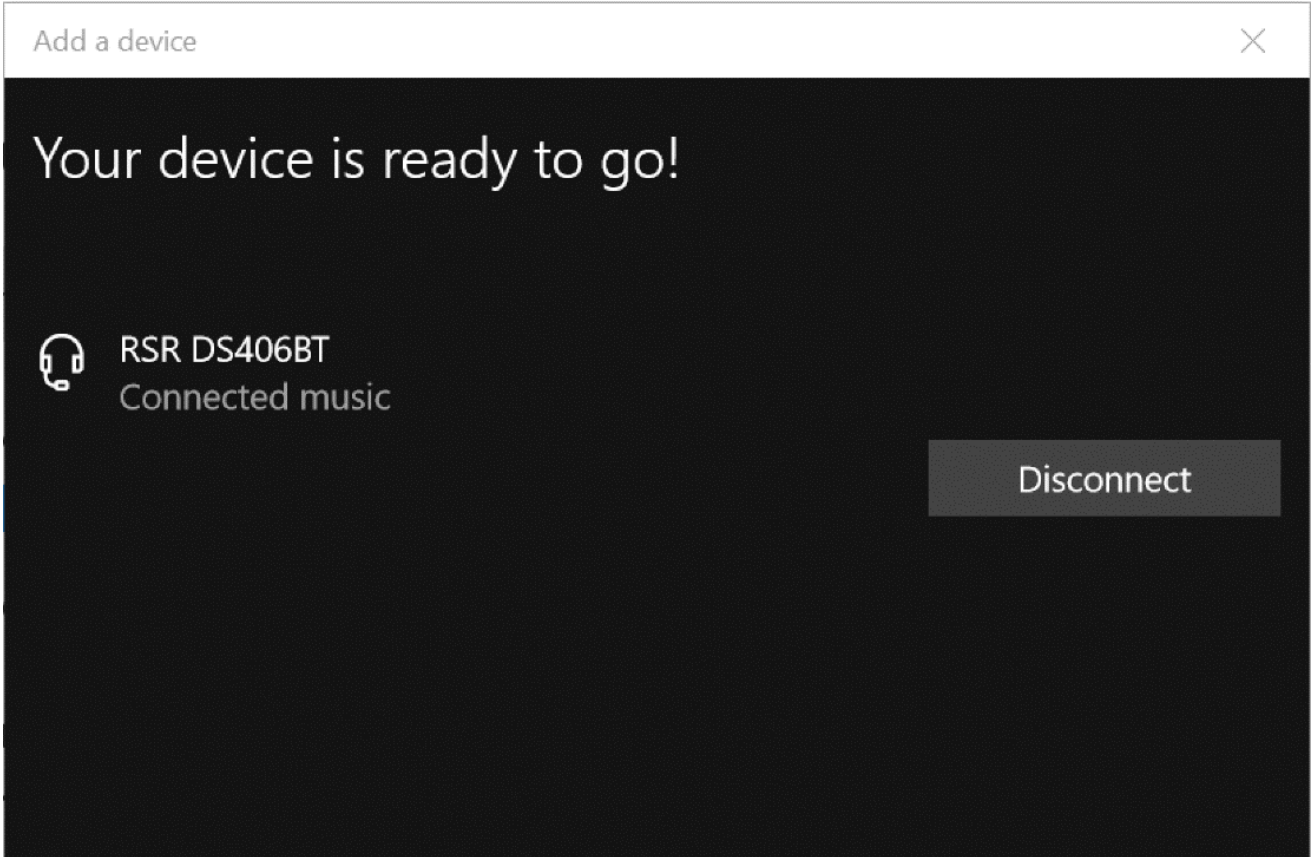
On

Now discoverable as "DESKTOP-HUJH3G1"

Audio

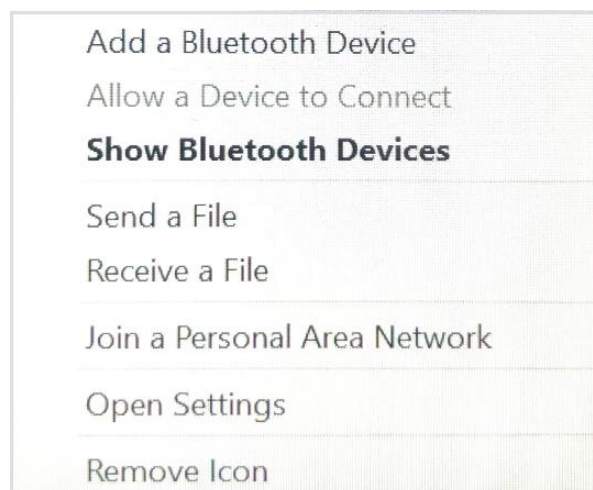
3.



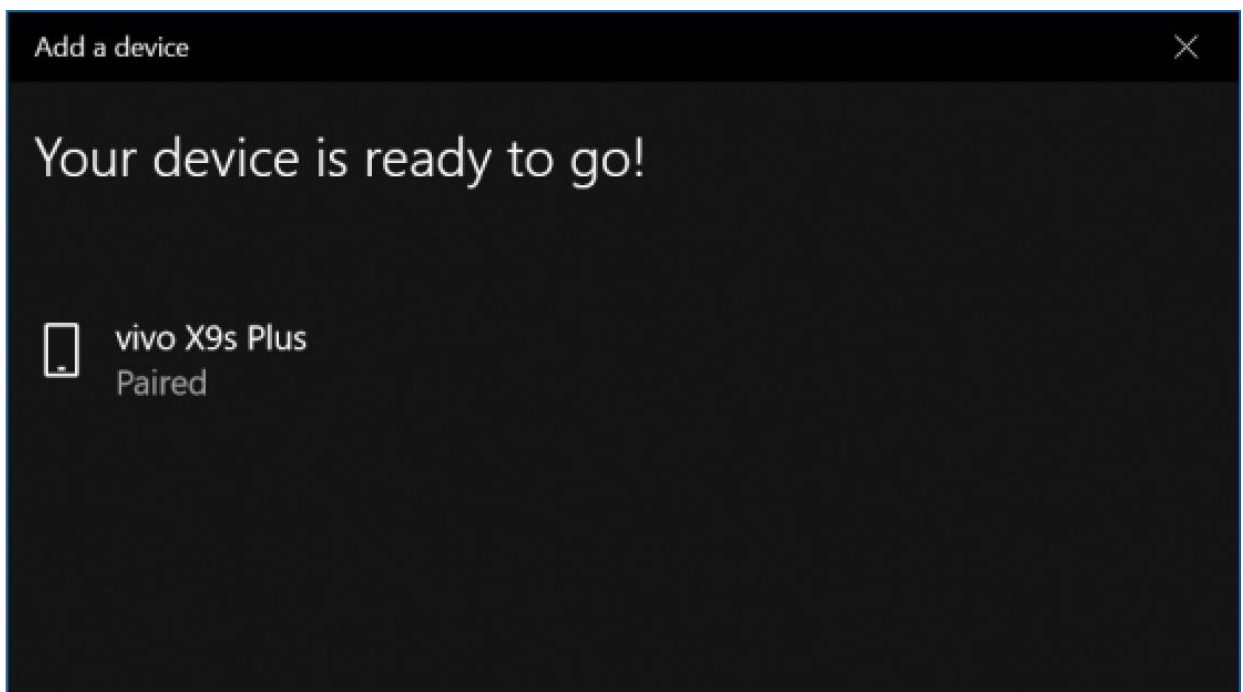
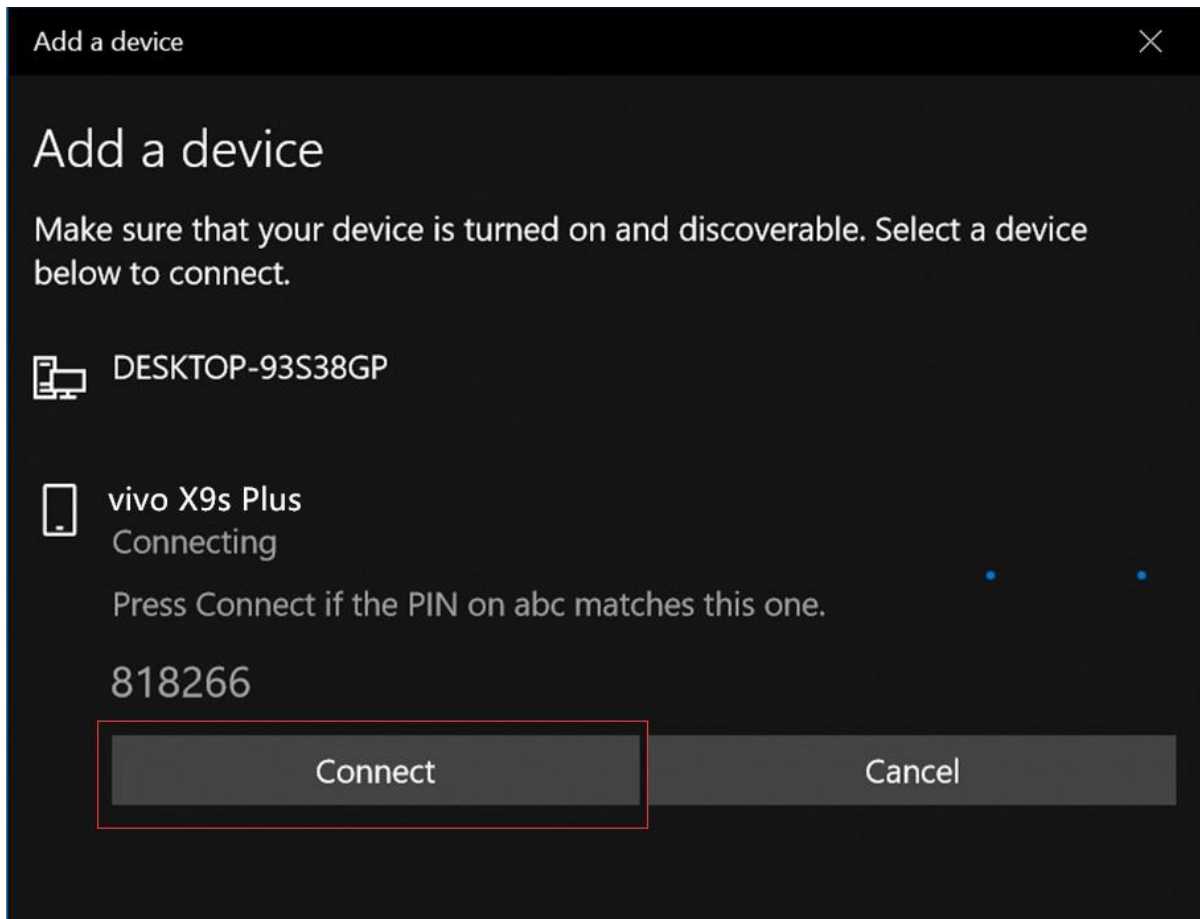


Part 3, Pair with a Cell Phone

1. Click "Add a Bluetooth Device"



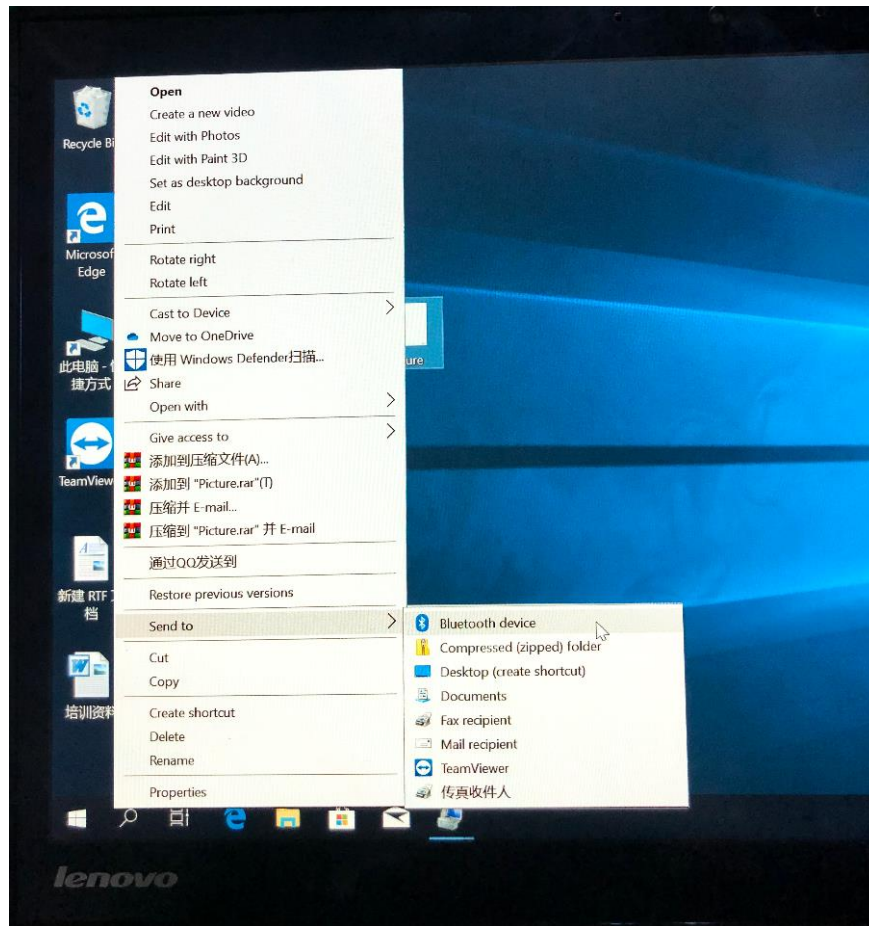
2. Look through and select the cell phone you want to pair with, system will start to pair by clicking "Next". At the same time, a code will pump up on both the system and cell phone, this is certificate whether they are the right pairs or not. Click "Start to Pair" on your phone and "Next" on computer to activate pairing process.



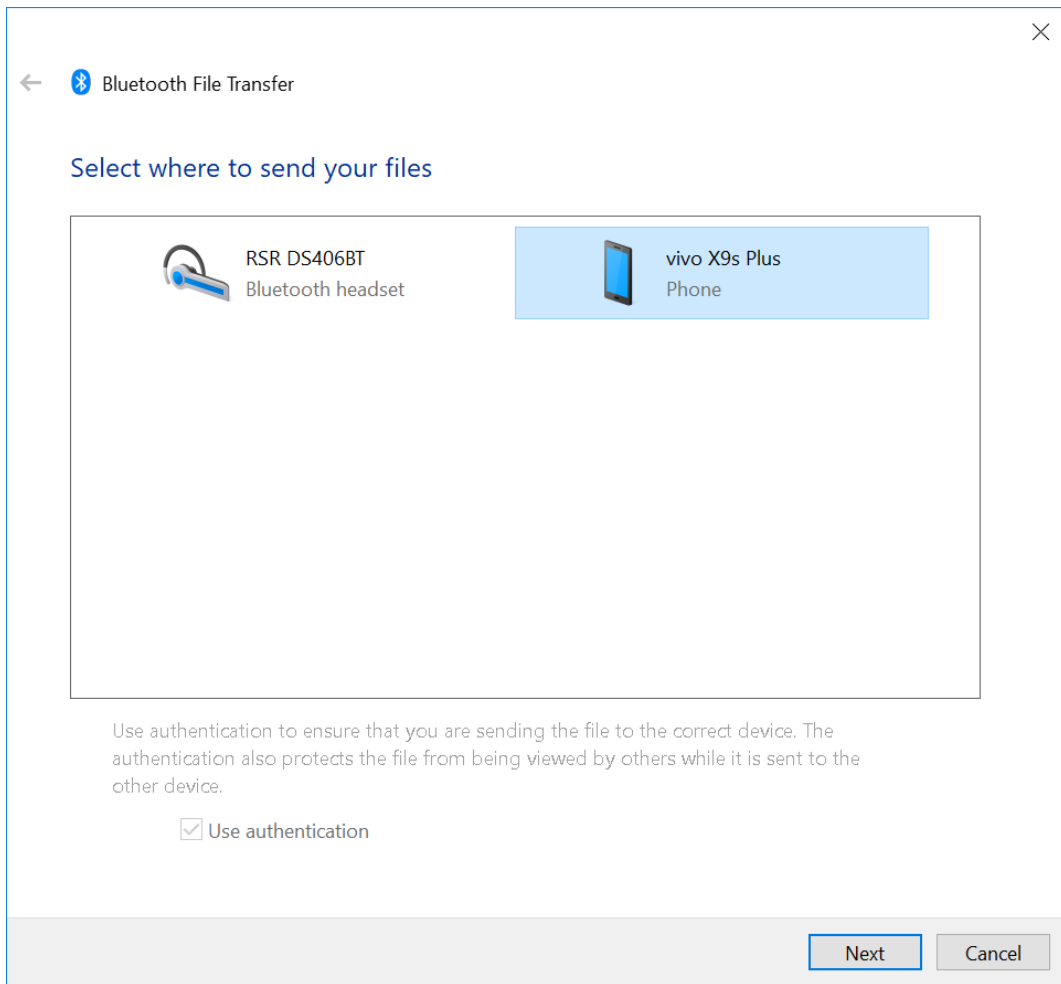
3. When it pump out a dialogue says "Your device is ready to go", that means pairing process is done, Click "Done", Fell free to personalize setting at Control Interface.

Part 4, Date Transfer

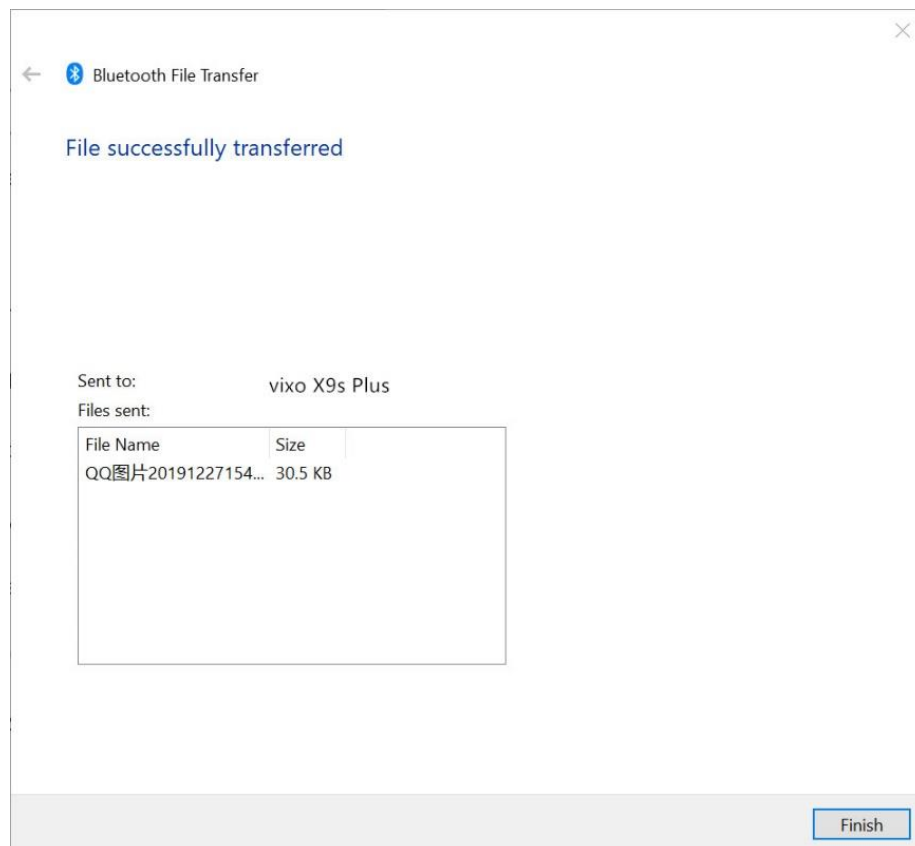
1. Right click the file which you want to transfer and select "Send to Bluetooth Device".



2. Select a receiving device, support selecting multi files simultaneously, here we take "vivo X9s Plus" as an example, click "Next".



3. On your phone end, click "Accept" to start data transfer.



NOTE: This equipment has been tested and found to comply with the limits for a Class B digital device, pursuant to part 15 of the FCC Rules. These limits are designed to provide reasonable protection against harmful interference in a residential installation. This equipment generates uses and can radiate radio frequency energy and, if not installed and used in accordance with the instructions, may cause harmful interference to radio communications. However, there is no guarantee that interference will not occur in a particular installation. If this equipment does cause harmful interference to radio or television reception, which can be determined by turning the equipment off and on, the user is encouraged to try to correct the interference by one or more of the following measures:

- Reorient or relocate the receiving antenna.
- Increase the separation between the equipment and receiver.
- Connect the equipment into an outlet on a circuit different from that to which the receiver is connected.
- Consult the dealer or an experienced radio/TV technician for help

Changes or modifications not expressly approved by the party responsible for compliance could void the user's authority to operate the equipment.

This device complies with Part 15 of the FCC Rules. Operation is subject to the following two conditions:

- (1) this device may not cause harmful interference, and
- (2) this device must accept any interference received, including interference that may cause undesired operation.