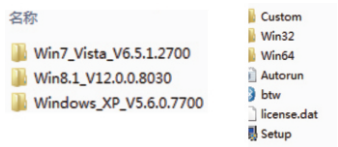


Part 1, for Window 7

1. Insert driver disk (included in package list) into CD-Rom of your computer, look through and select your corresponding operating system, then install the Setup.exe file.

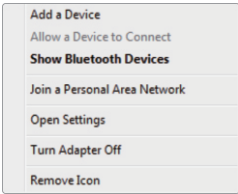
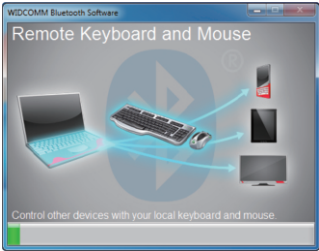


2. Select "Agree and Install the Bluetooth Driver" to start installation, after the progress bar indicates it is done, it is done.

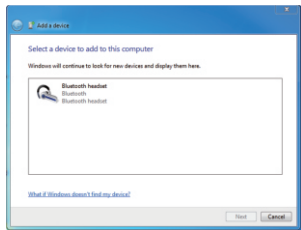


Part 2, Pair with Your Device via Bluetooth

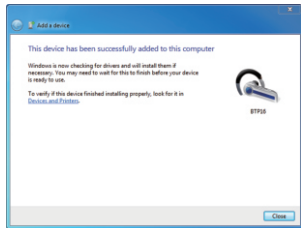
1. Select the Bluetooth icon on bottom right of your system's tool bar, then right click to pullout a man bar.
2. Click "Add a New Device".



3. Look through and select the Bluetooth device you want to pair with, click "Next", system will automatically start pairing and install driver afterwards.

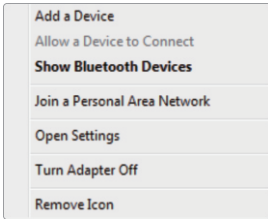


4. When it pump out a dialogue says "Device has Already been Added to Computer", that means pairing process is done, Click "Close". Fell free to personalize settings at Control Interface.

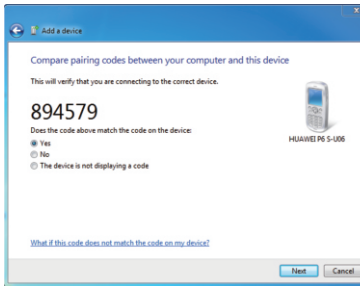
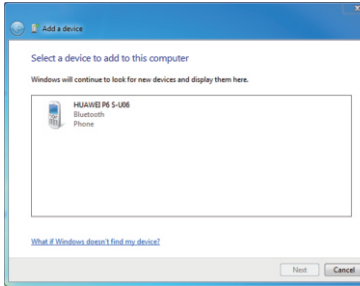


Part 3, Pair with a Cell Phone

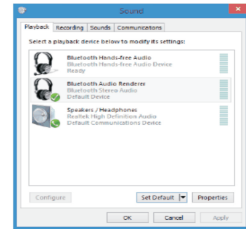
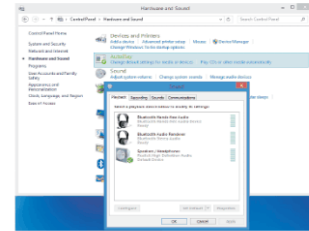
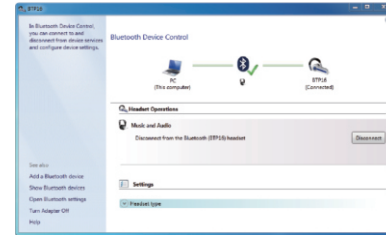
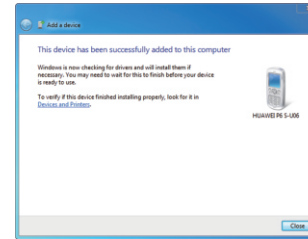
1. Select the Bluetooth icon on bottom right of your system's tool bar, then right click to pullout a man bar.
2. Click "Add a New Device".



3. Look through and select the cell phone you want to pair with, system will start to pair by clicking "Next". At the same time, a code will pump up on both the system and cell phone, this is to certificate whether they are the right pairs or not. Click "Start to Pair" on your phone and "Next" on computer to activate pairing process.



4. When it pump out a dialogue says "Device has Already been Added to Computer", that means pairing process is done, Click "Close". Fell free to personalize settings at Control Interfacier.



5. For headsets or audio devices,the audio source can be adjusted by selecting“Manage Audio Devices” from“Sound”in the “Control Panel”.
6. Choose the device intended for audio from the list and click on “Set Default” under “Playback”tab

NOTE: This equipment has been tested and found to comply with the limits for a Class B digital device, pursuant to part 15 of the FCC Rules. These limits are designed to provide reasonable protection against harmful interference in a residential installation. This equipment generates uses and can radiate radio frequency energy and, if not installed and used in accordance with the instructions, may cause harmful interference to radio communications. However, there is no guarantee that interference will not occur in a particular installation. If this equipment does cause harmful interference to radio or television reception, which can be determined by turning the equipment off and on, the user is encouraged to try to correct the interference by one or more of the following measures:

- Reorient or relocate the receiving antenna.
- Increase the separation between the equipment and receiver.
- Connect the equipment into an outlet on a circuit different from that to which the receiver is connected.
- Consult the dealer or an experienced radio/TV technician for help

Changes or modifications not expressly approved by the party responsible for compliance could void the user's authority to operate the equipment.

This device complies with Part 15 of the FCC Rules. Operation is subject to the following two conditions:

- (1) this device may not cause harmful interference, and
- (2) this device must accept any interference received, including interference that may cause undesired operation.