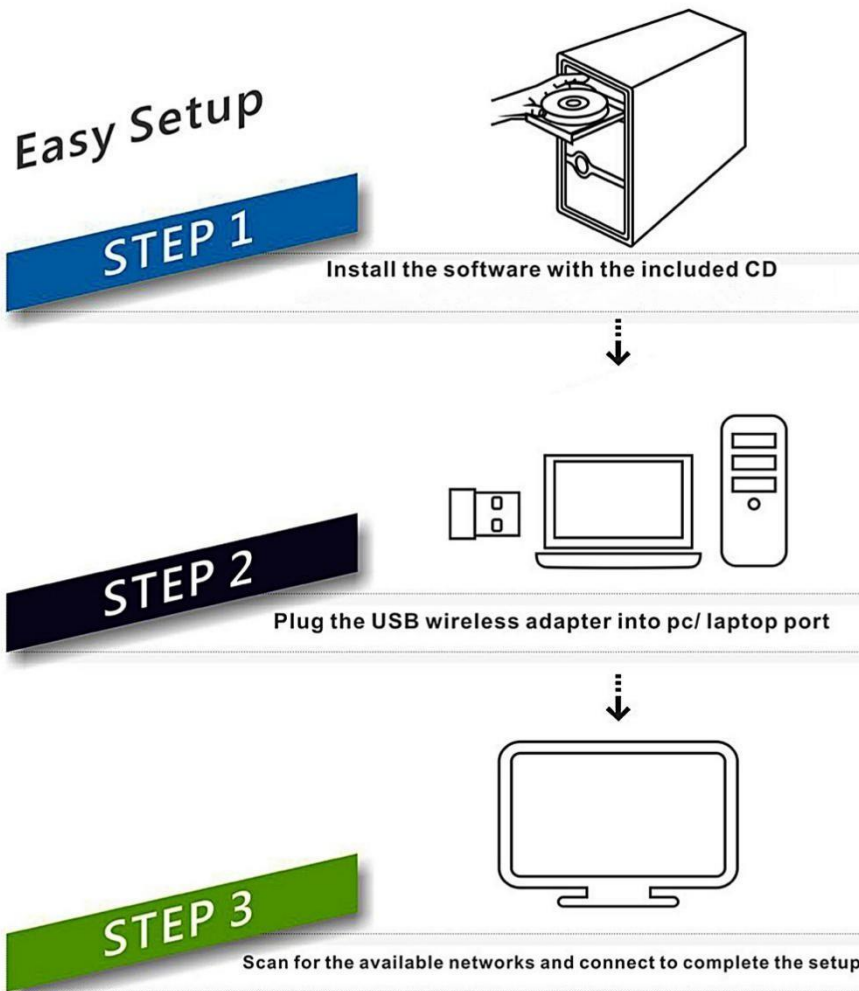


Dual Band Wireless USB Adapter

User Manual

1. Introduction

Thank you for purchasing the wireless 802.11b/g/n/a/ac USB adapter! This adapter is mini size design and you are able to plug it into the USB port. Excepting common wireless standards 802.11b/g/n, this wireless adapter is also 802.11ac compatible - data transfer rate is 150/433Mbps, and that's three times faster than 802.11g wireless network!

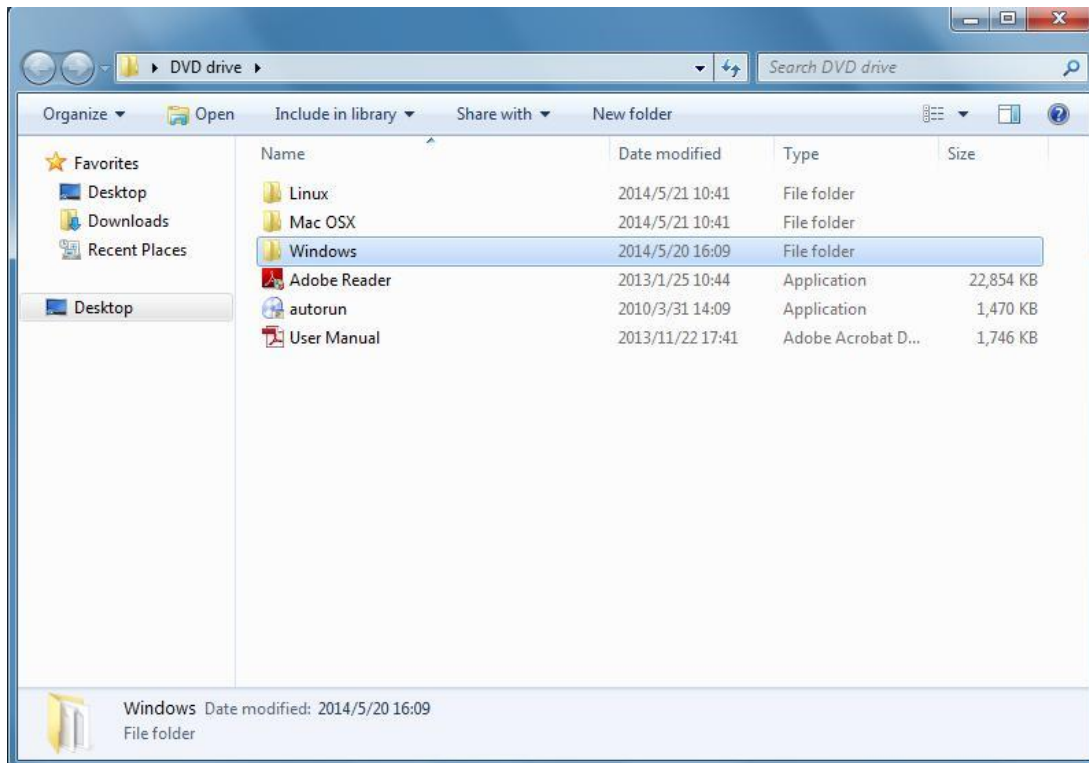


System Support:

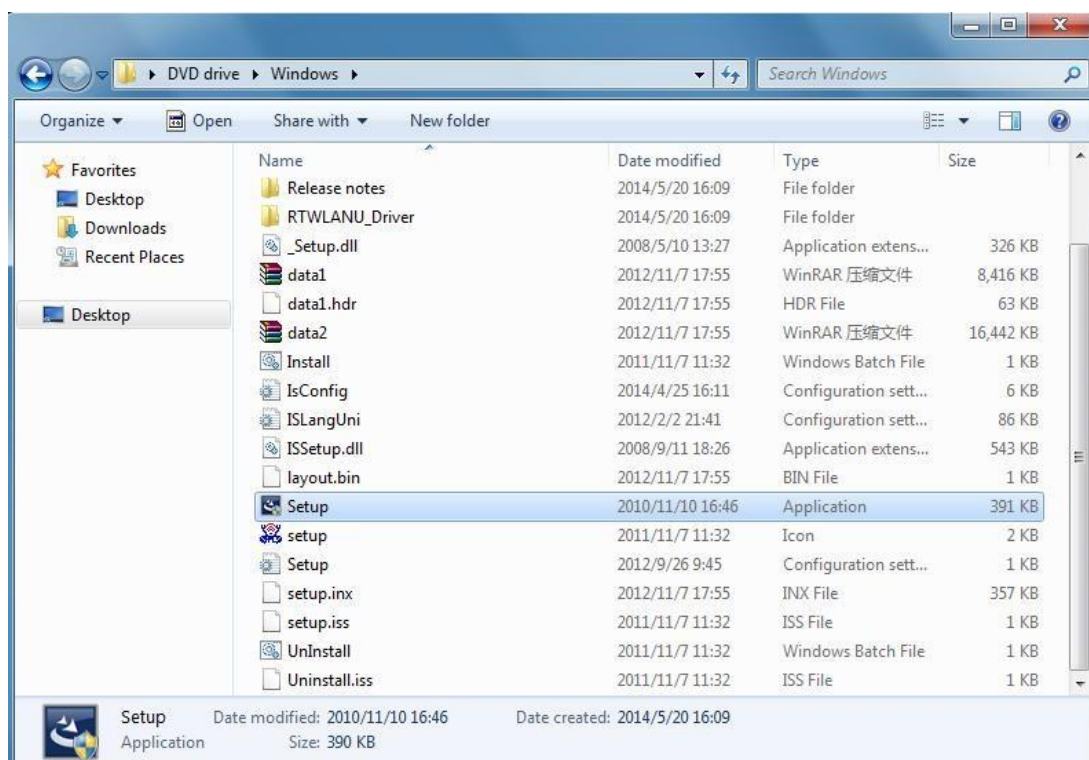
Windows XP/Vista/Win7/8/10/Mac

2: Quick Installation Guide

1. Insert CD into your computer's CD drive, double click "D" Drive **OR** you can open the "D" drive.
2. Select proper file for your system "**Windows/Mac/Linux**"



3. Select your system "**Win/Mac/Linux**", follow the direction to finish the installation
4. 2. Double left-click on the **setup.exe** file and follow the direction to finish the installation.



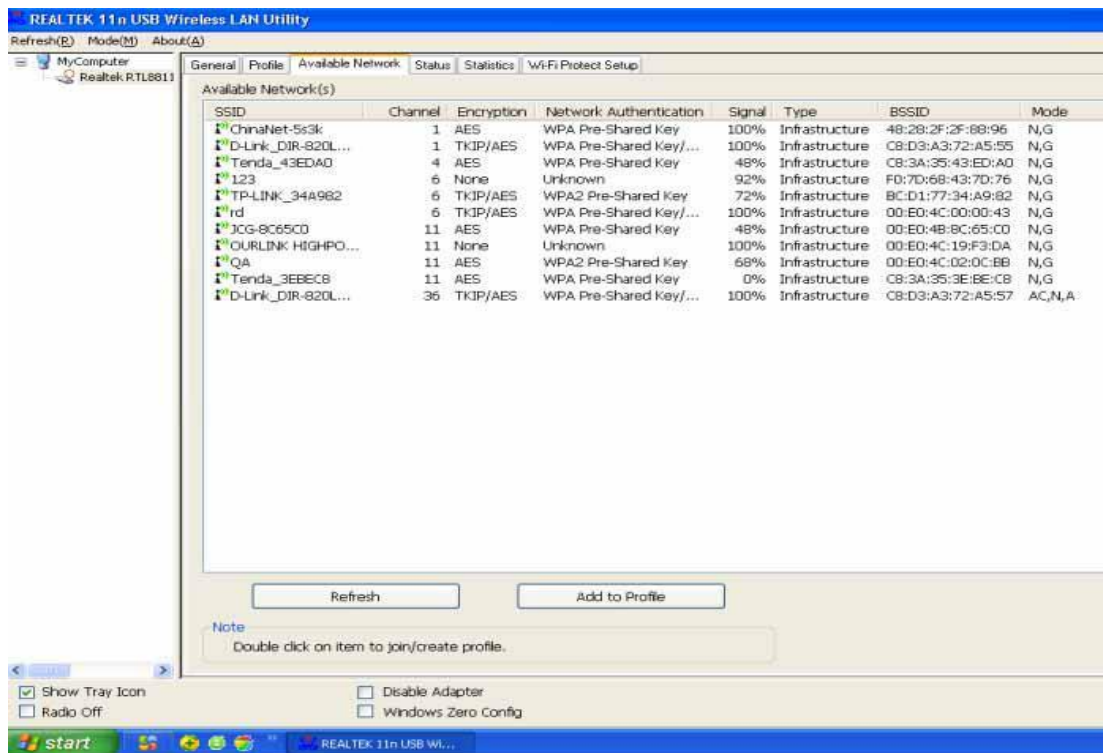
5. Once the installation is finished the computer will be asked to reboot. you can click '**Finish**' and reboot the computer to finish the installation of driver files.



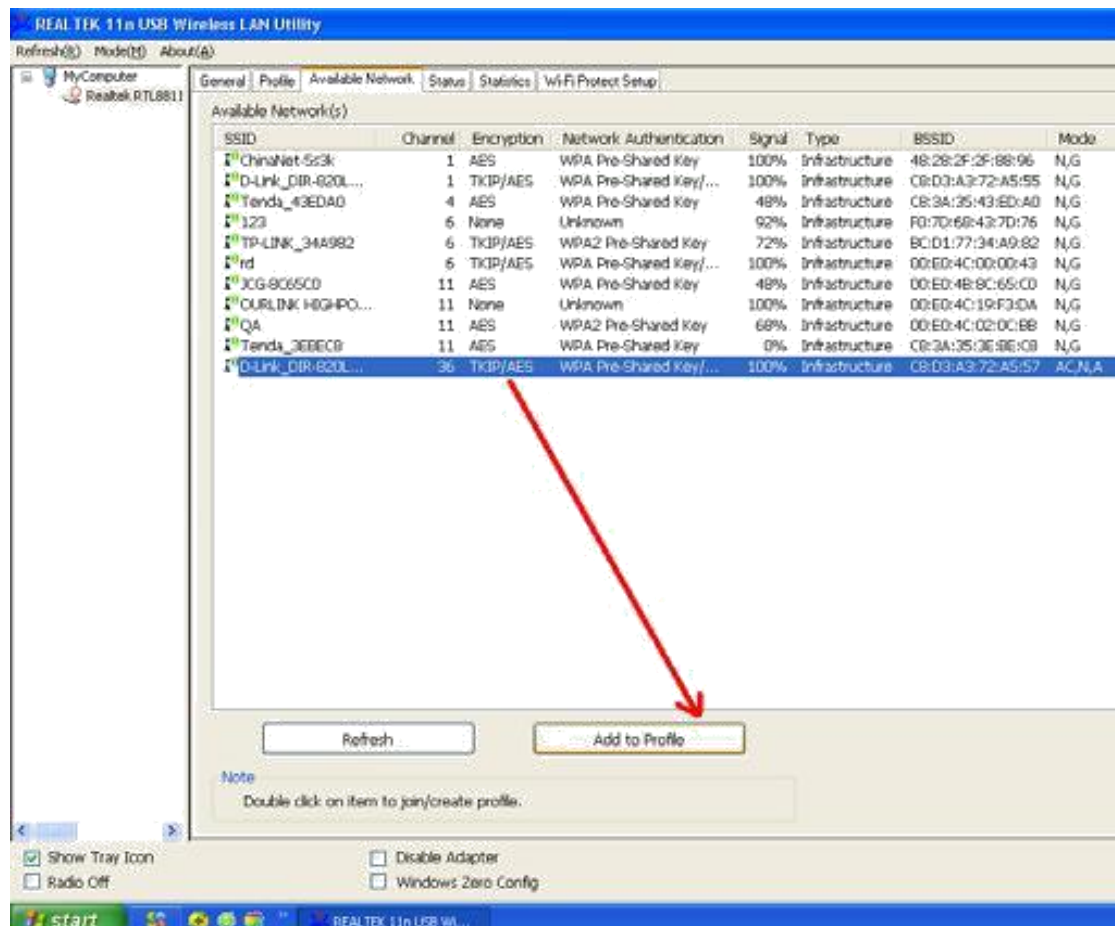
6. A new icon will appear near the clock of system tray:
Connect to the Internet:



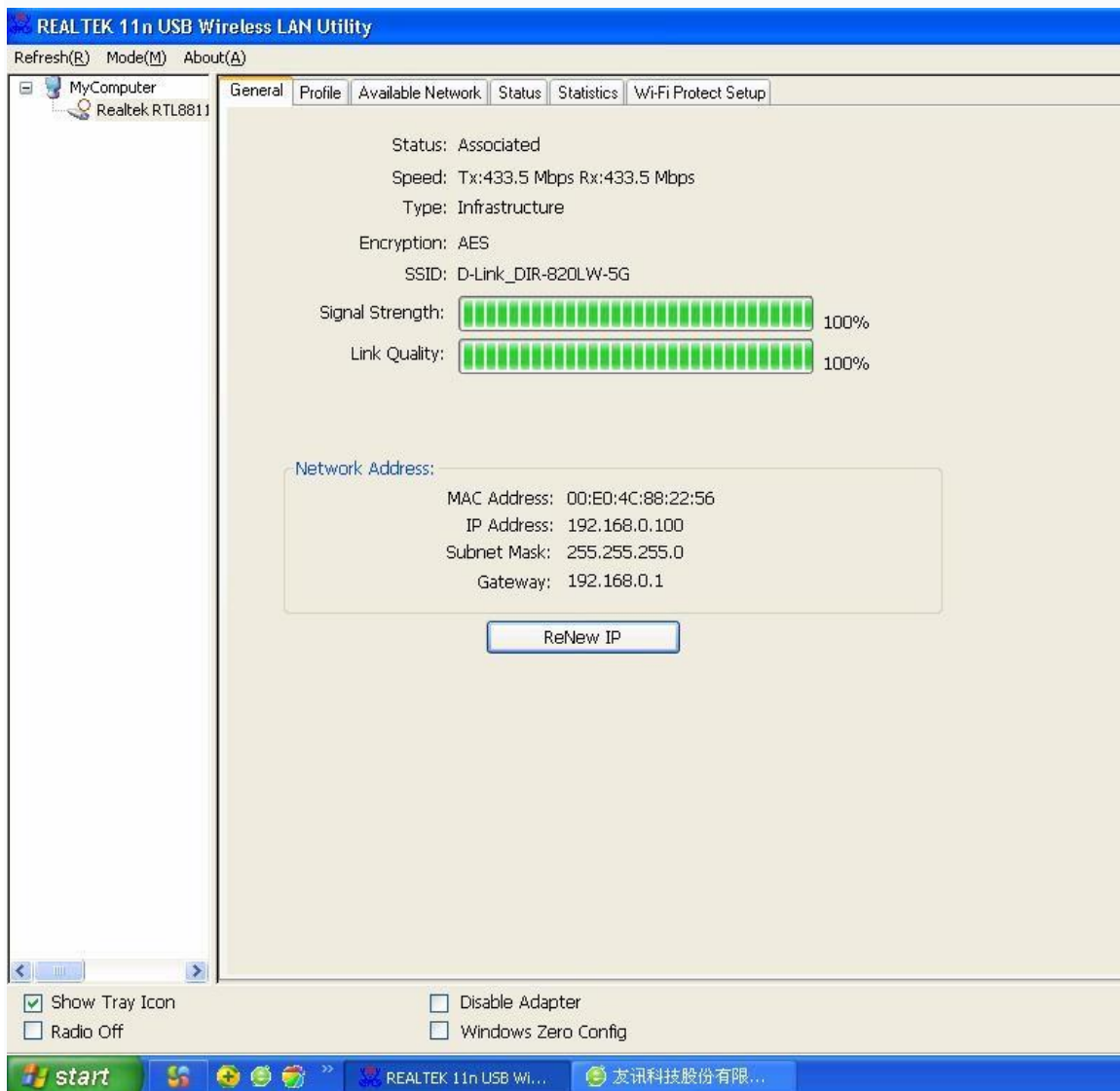
7. Wireless utility will appear. Click '**Available Network**' menu to search for wireless access points nearby.



8. Choose your network and enter the password



9.Connection successful(if you entered the password,but network don't work,pls try to return your Router)

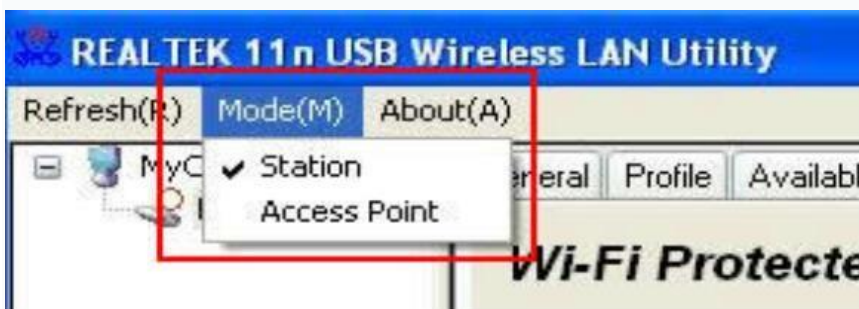


3.AP mode for Win8.1/8/7/vista/xp/2000

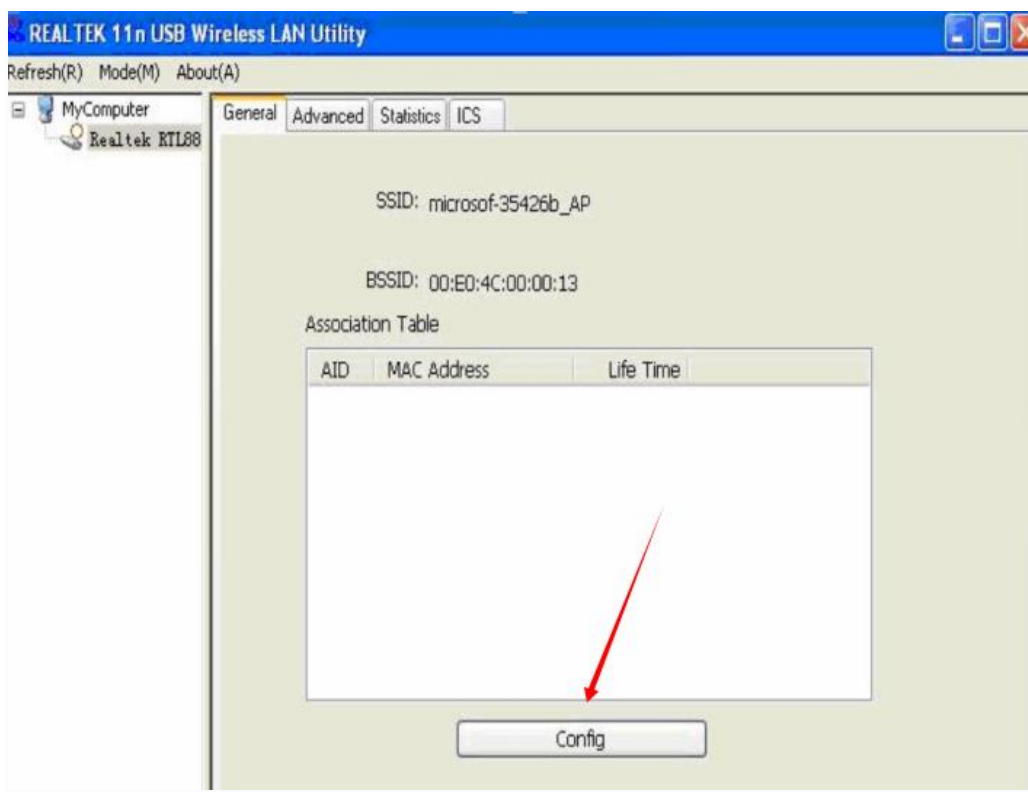
Right-click Client configuration utility icon, and click **Open Config Utility**



Select **Mode** and then select **Access Point** .



It requires few seconds to switch to AP mode, please be patient



Client mode icon



AP mode icon



Configure SSID and Channel

Please note that Ad-Hoc mode is not available when network card is in AP mode

Wireless Network Properties:

Profile Name: Access Point Mode

Network Name(SSID): microsopf-35426b_AP

This is a computer-to-computer(ad hoc) network; wireless access points are not used.

Channel: 1 (2412MHz)

Wireless network security

This network requires a key for the following:

Network Authentication: Open System

Data encryption: Disabled

ASCII PASSPHRASE

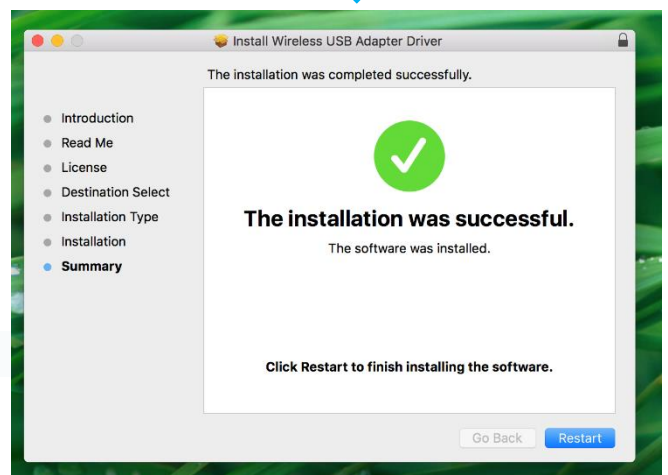
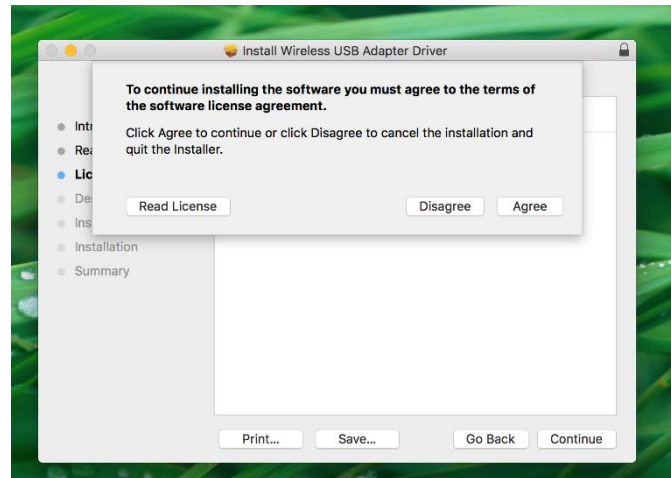
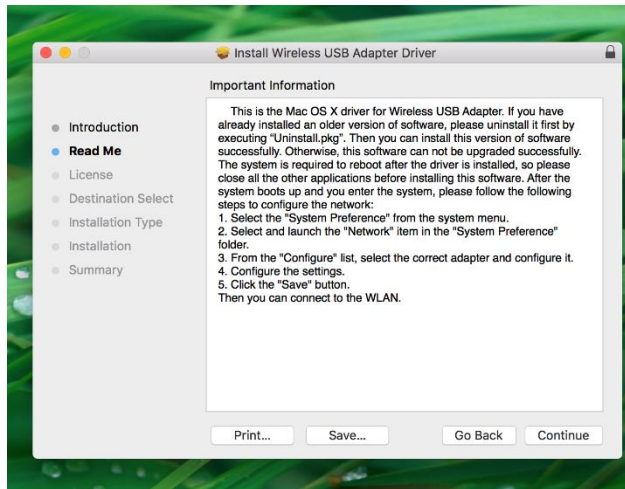
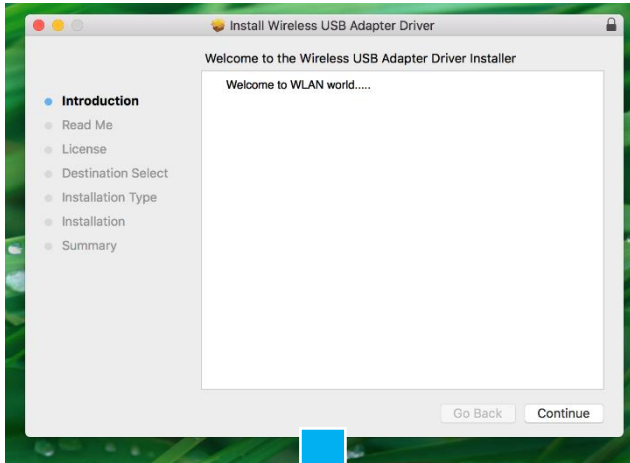
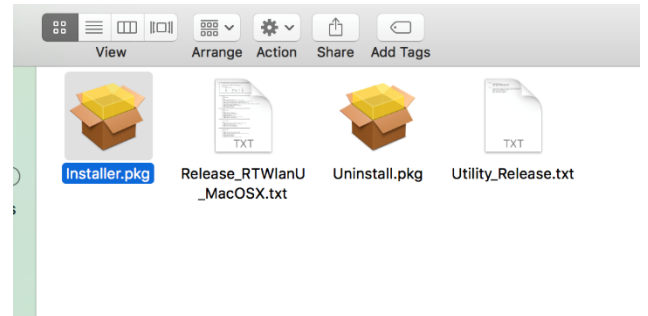
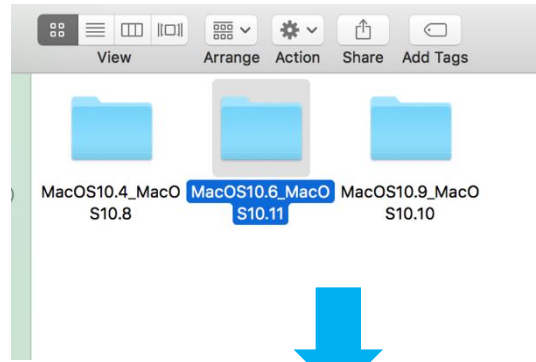
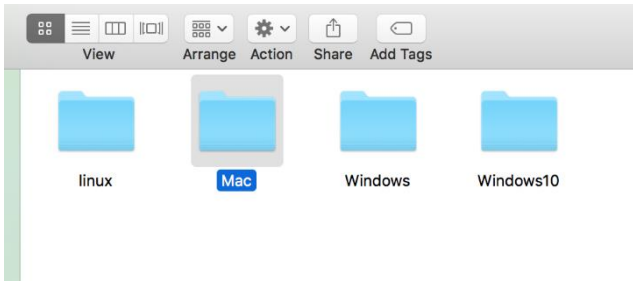
Key index (advanced): 1

Network key:

Confirm network key:

OK Cancel

4.Quick Installation Guide for MAC



FCC statement

This device complies with Part 15 of the FCC Rules: Operation is subject to the following two conditions:

1. This device may not cause harmful interference and
2. This device must accept any interference that is received, including any interference that may cause undesired operation.

*RF warning for Portable device: The device has been evaluated to meet general RF exposure requirement. The device can be used in portable exposure condition without restriction.

This device is acting as master and operating in the 2.4 GHz (2412 ~2462 MHz) band.

NOTE: This equipment has been tested and found to comply with the limits for a Class B digital device, pursuant to part 15 of the FCC Rules. These limits are designed to provide reasonable protection against harmful interference in a residential installation. This equipment generates uses and can radiate radio frequency energy and, if not installed and used in accordance with the instructions, may cause harmful interference to radio communications. However, there is no guarantee that interference will not occur in a particular installation. If this equipment does cause harmful interference to radio or television reception, which can be determined by turning the equipment off and on, the user is encouraged to try to correct the interference by one or more of the following measures:

- Reorient or relocate the receiving antenna.
- Increase the separation between the equipment and receiver.
- Connect the equipment into an outlet on a circuit different from that to which the receiver is connected.
- Consult the dealer or an experienced radio/TV technician for help

Changes or modifications to this unit not expressly approved by the party responsible for compliance could void the user's authority to operate the equipment.