

**Annex acc. to FCC Title 47 CFR Part 15
relating to
EBS Ink-Jet Systems Poland Sp. z o. o.
PH1600**

Annex no. 2 Internal Photographs

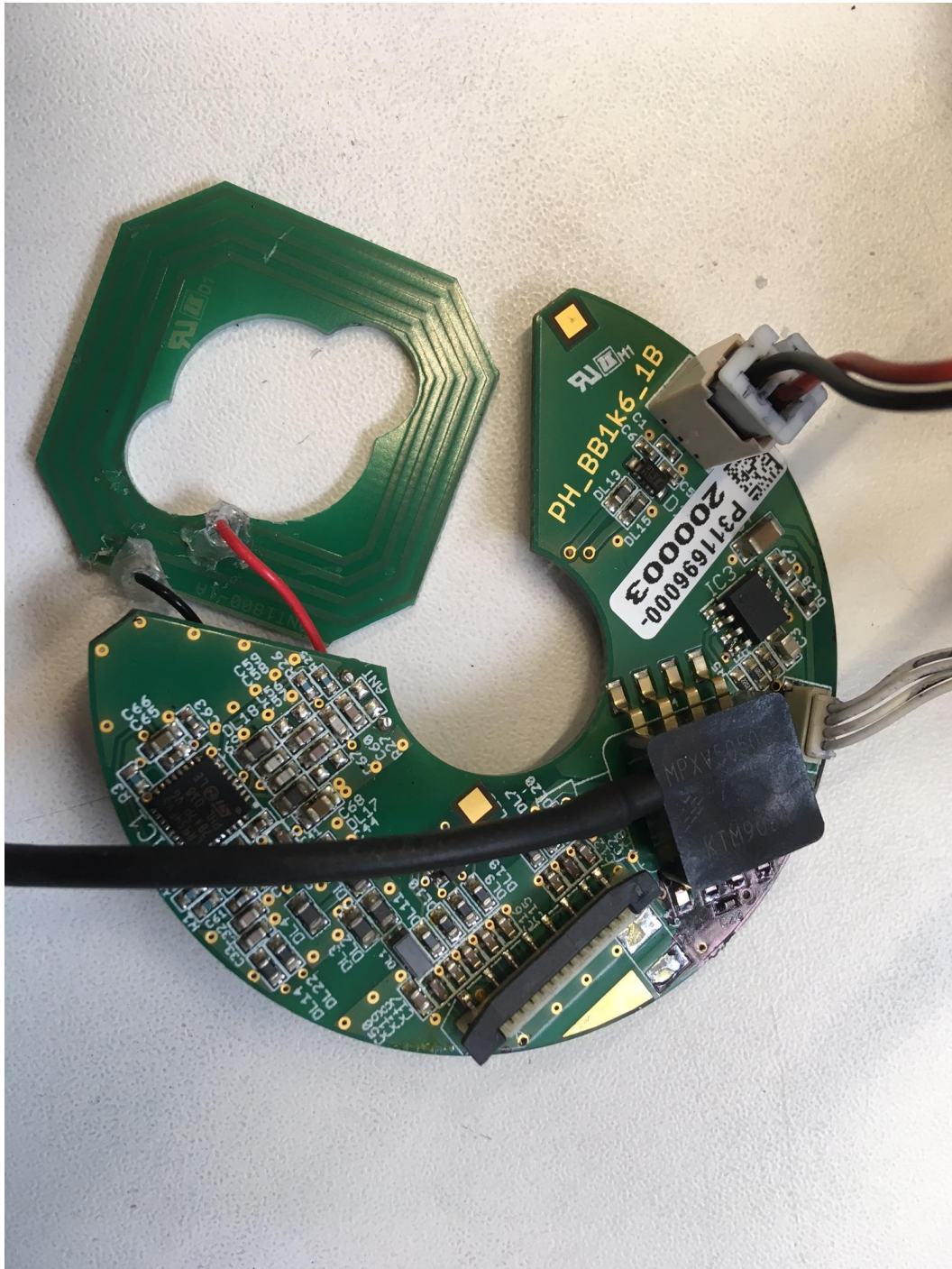
**Title 47 - Telecommunication
Part 15 - Radio Frequency Devices
Subpart C – Intentional Radiators
ANSI C63.4-2014
ANSI C63.10-2013**



Deutsche
Akkreditierungsstelle
D-PL-12053-01-03

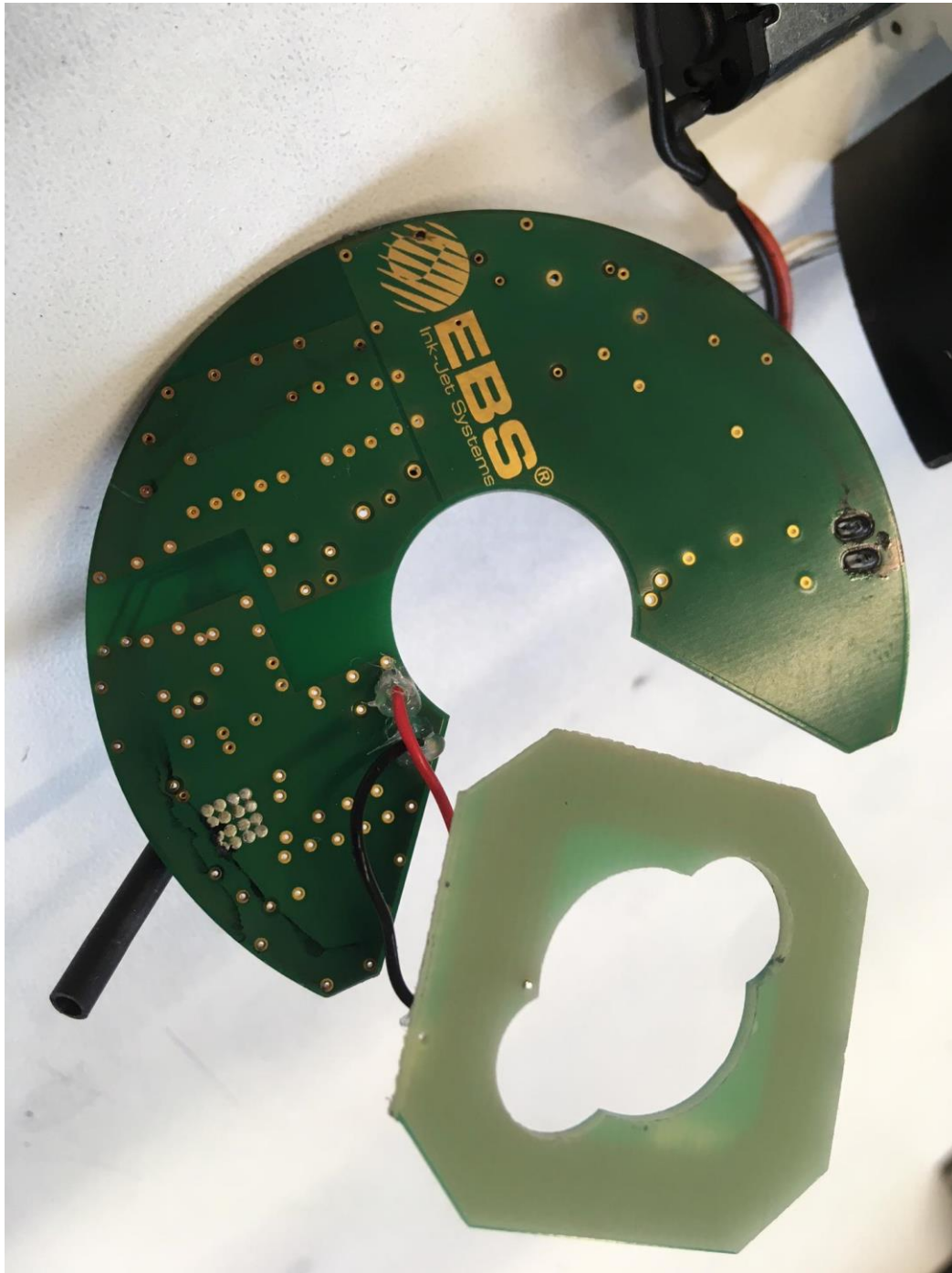
Photographs of the test equipment (EUT) – Internal Construction Upper Side of RFID

The equipment shall be opened only after type testing is completed and photographs of the internal construction shall be made.



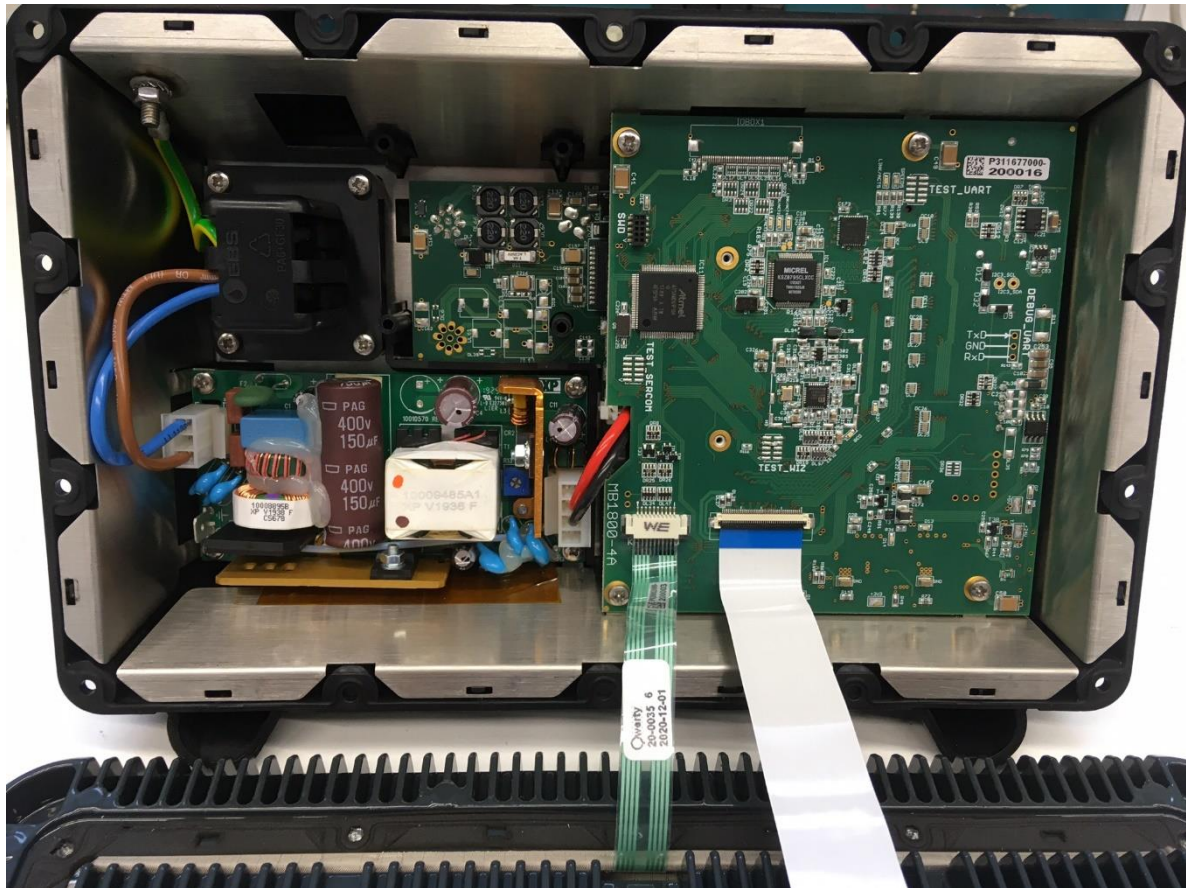
Photographs of the test equipment (EUT) - Internal Construction Lower Side of RFID

The equipment shall be opened only after type testing is completed and photographs of the internal construction shall be made.



Photographs of the test equipment (EUT) - Internal Construction of touch Display

The equipment shall be opened only after type testing is completed and photographs of the internal construction shall be made.



Photographs of the test equipment (EUT) - Internal Construction of touch Display

The equipment shall be opened only after type testing is completed and photographs of the internal construction shall be made.

