

Product specification

TYPE:A1

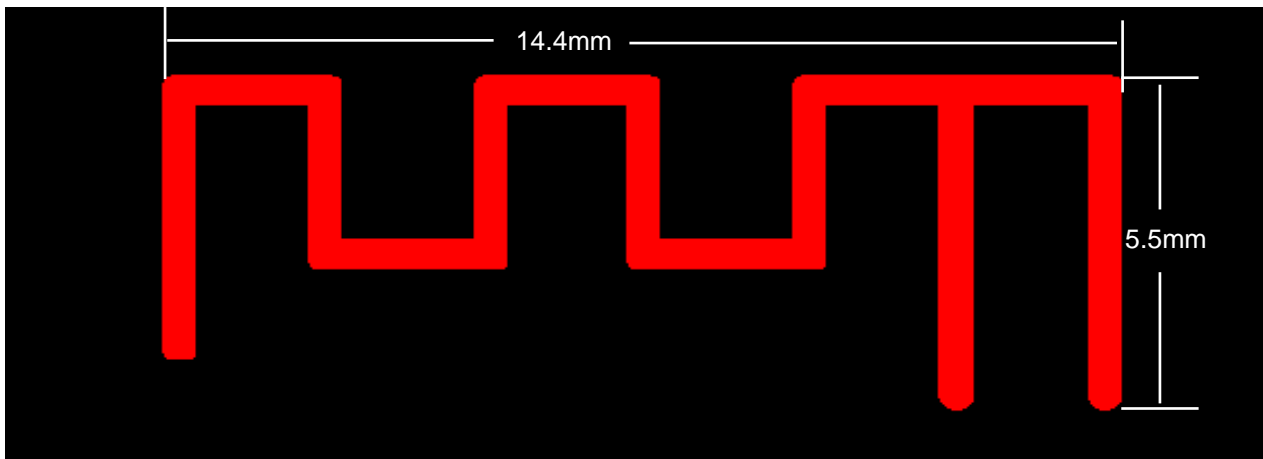
Manufacturer:Shenzhen Hysiry Technology Co.,Ltd

Quick Reference Date

	Antenna module on the system board	
Frequenc Range	2400 ~ 2500MHz	
Ant. Port Input Pwr. (dBm)	0 (Typ. BT class 2 output power)	
Tot. Rad. Pwr. (dBm)	-1.2 (Input pwr – loss pwr)	
Peak EIRP(dBm)	1.2	
Directivity (dBi)	1 (all direction antenna)	
Efficiency (dB)	61.2 %	
Gain (dBi)	1 (Peak Gain XY-plane)	
Maximum Power (dBm)1.5 (XY-plane)		
Minimum Power (dBm)	-4(XY-plane)	
Avg. Power (dBm)	-0.5(XY-plane)	
Input Impedence(ohm)	50	
Polarization Type	Vertical & Horizontal	
V. S .W. R	< 1.5	

All the technical data and information contained herein are subject to change without prior notice

Antenna Layout & module on the system board



Antenna Gain

Gain Table

Unit in dBi @2.402GHz	XY-plane		XZ-plane		YZ-plane		Efficiency
	Peak	Avg.	Peak	Avg.	Peak	Avg.	
Module Board	0.9	-0.4	0.6	-3.4	0.9	-2.9	61.4 %

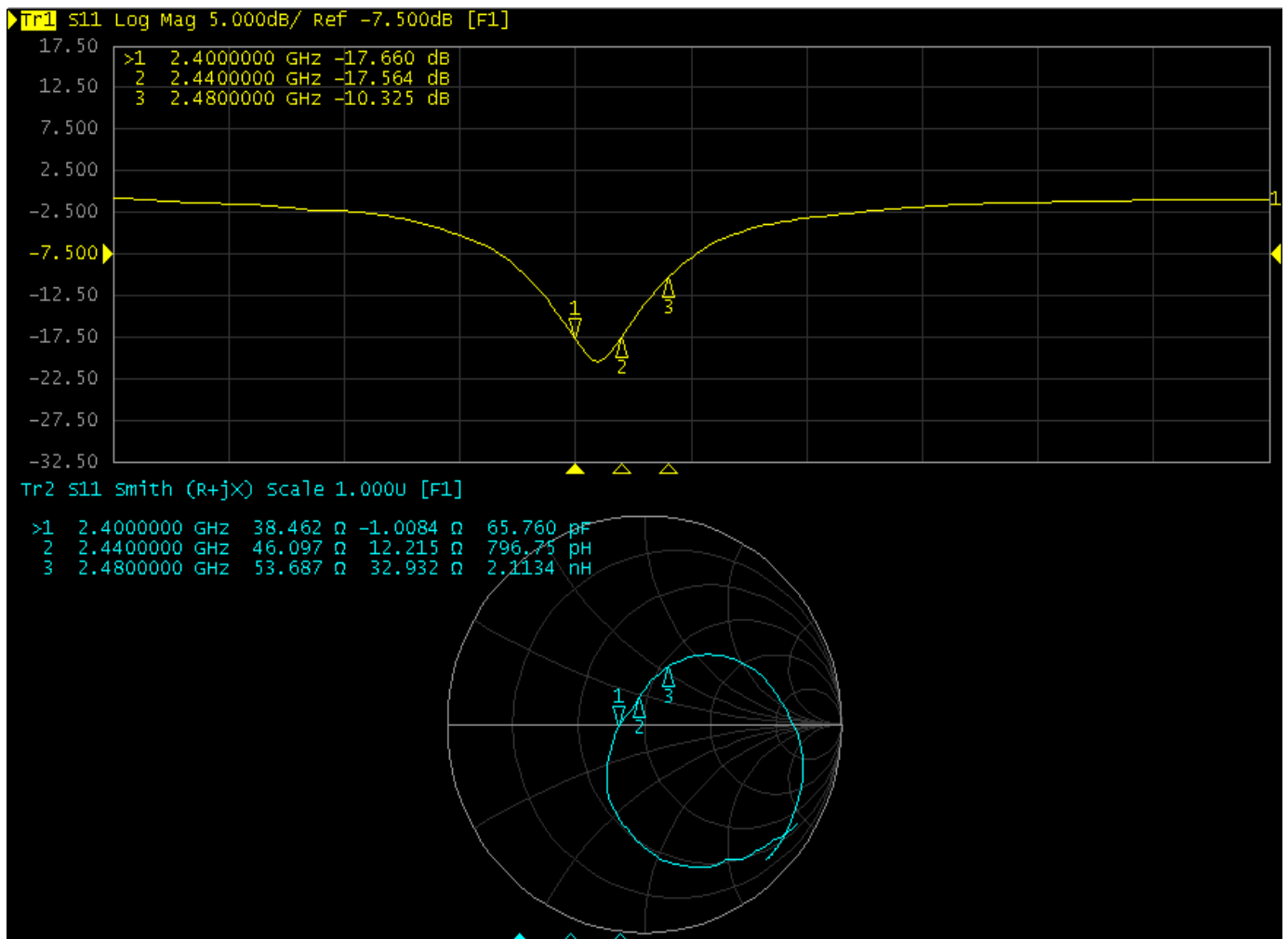
Gain Table

Unit in dBi @2.44GHz	XY-plane		XZ-plane		YZ-plane		Efficiency
	Peak	Avg.	Peak	Avg.	Peak	Avg.	
Module Board	1.0	-0.5	0.7	-3.6	1.0	-3.0	61.2 %

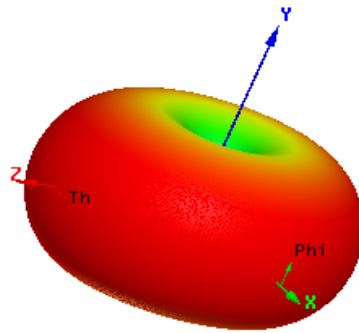
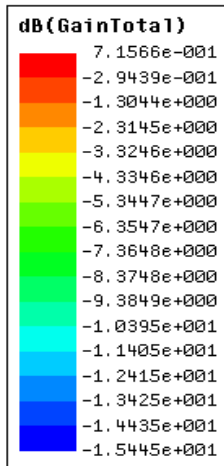
Gain Table

Unit in dBi @2.48GHz	XY-plane		XZ-plane		YZ-plane		Efficiency
	Peak	Avg.	Peak	Avg.	Peak	Avg.	
Module Board	0.5	-5.8	0.3	-9.4	0.6	-8.7	55.6 %

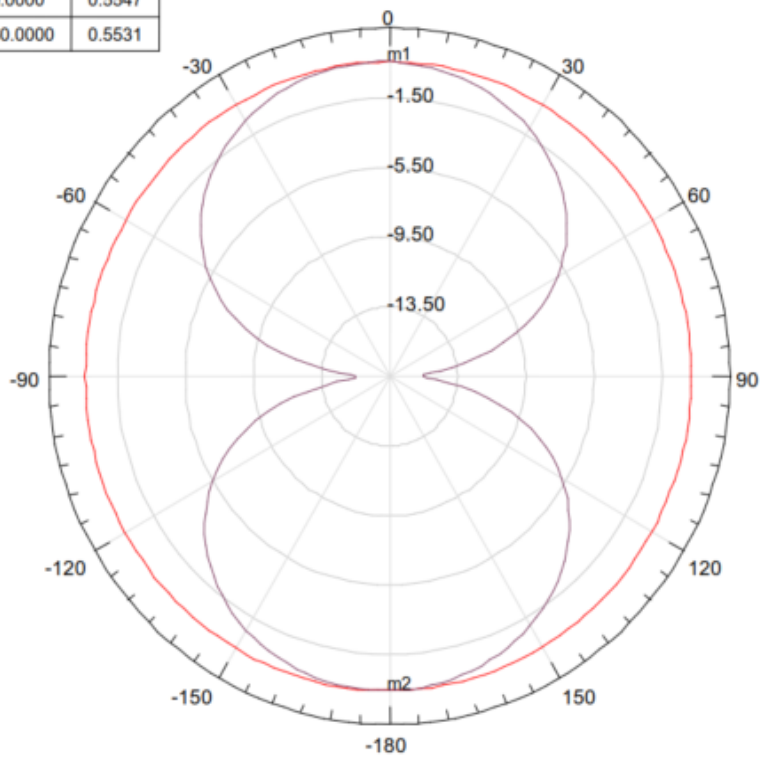
Return Loss



3D radiation pattern diagram



Name	Theta	Ang	Mag
m1	0.0000	0.0000	0.5547
m2	180.0000	180.0000	0.5531



Curve Info	
— (Red)	dB(GainTotal) Setup1 : Sweep1 Phi='0deg'
— (Purple)	dB(GainTotal) Setup1 : Sweep1 Phi='90deg'