

尺寸: 105x75mm  
 材质: 105g铜版纸  
 装订方式: 风琴折页

# User Manual

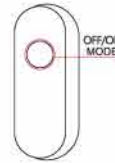


## Setting Hello Fairy Smart App

Download "Hello Fairy" from iOS APP Store/ Google Play, or scan the QR code to install the "Hello Fairy" [ either iOS or Android ].

## Specifications

Color	RGB
Power supply	Adapter
Input voltage	100-240V
Control method	Remote/ APP Control / Controller
Working temperature	-20°C-50°C

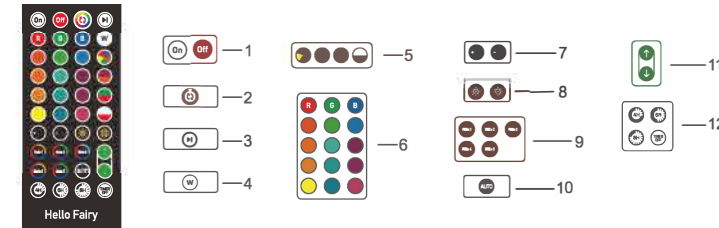


**! Please note that all colorful string lights cannot be DIY cut !**

1. Click the controller button to open and double-click the controller button to close.
2. Long press the button for three seconds to cycle in sequence the two modes: scene mode, monochromatic mode.
3. In monochrome mode, click the button to switch the color of the light. All colors switch in order. In scene mode, click the button to switch to the next scene. Switch all scene modes in order.

-01-

## IR Remote Controller 40 KEYS

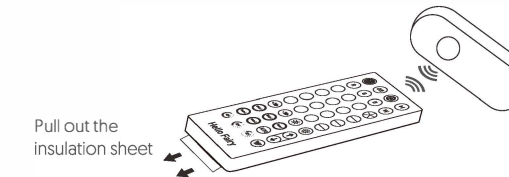


1. On/Off button.
2. Switch one color every 10 seconds, all 16 colors.
3. Pause/ Run Button.
4. white: Click on static for the first time and blink for the second time
5. Fixed festival scene mode.
6. LED single color button: 15 solid colors switch quickly.
7. Scene mode speed adjustment [+/-].

-02-

8. LED brightness adjustment [+/-].
9. 5 fixed color scene modes.
10. Switch to one scene mode every 1 minute.
11. In monochrome mode, the previous or next color; in scene mode, the previous or next scene.
12. Timing function: 4hour, 6 hours, 8 hours, and off timer.

Please pull out the insulation sheet when use the remote

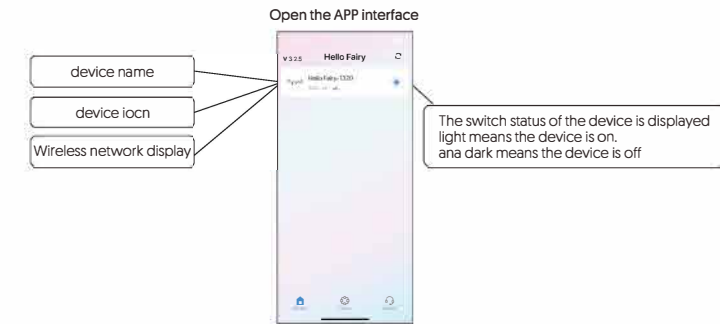


Make sure the IR remote aims at the IR receiver within the sensing distance. The angle of the IR receiver is 120° and the sensing distance is 16.4 ft. Please use the remote control within the sensing range.

-03-

## Connect mobile phone

1. Plug in the power, then turn on the string light switch.
2. Turn on the mobile phone Bluetooth.
3. Open the Hello Fairy APP on the mobile phone and search for the device "Hello Fairy -xxx".
4. After the device name is displayed on the interface, you can click "Hello Fairy -xxx" to enter the main interface and start the operation.



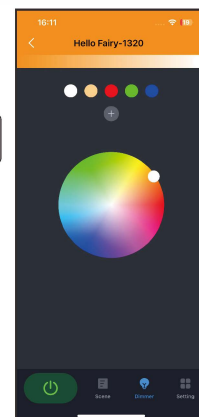
-04-

Rename the device name.

Into the home page

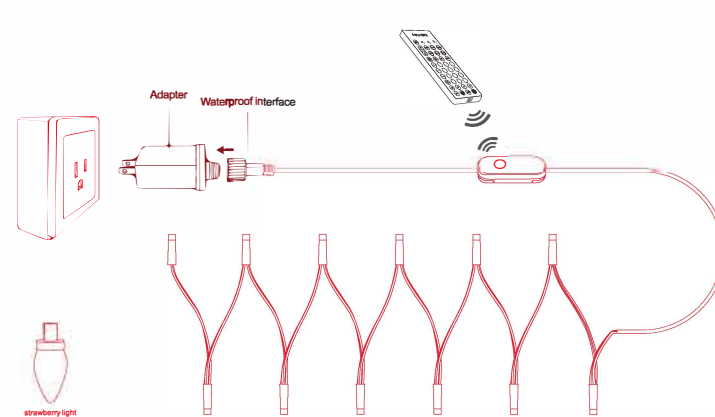


Click the device name and swipe left to quickly rename the device name.



-05-

## Installation Diagram



-06-

## WARNING

- **INGESTION HAZARD:** This product contains a button cell or coin battery.
- **DEATH** or serious injury can occur if ingested.
- A swallowed button cell or coin battery can cause **Internal Chemical Burns** in as little as 2 hours.
- **KEEP** new and used batteries **OUT OF REACH OF CHILDREN**
- **Seek immediate medical attention** if a battery is suspected to be swallowed or inserted inside any part of the body.



## REQUIREMENTS FOR CONSUMER PRODUCTS CONTAINING BUTTON CELL OR COIN BATTERIES:

- The statement "Remove and immediately recycle or dispose of used batteries according to local regulations and keep away from children. Do NOT dispose of batteries in household trash or incinerate."
- The statement "Even used batteries may cause severe injury or death."
- The statement "Call a local poison control center for treatment information."
- A statement indicating the compatible battery type [e.g., LR44, CR2025]
- A statement indicating the nominal battery voltage. [ 3V ]

-07-

[f]. The statement "Non-rechargeable batteries are not to be recharged."

[g]. The statement "Do NOT force discharge, recharge, disassemble, heat above (manufacturer's specified temperature rating) or incinerate. Doing so may result in injury due to venting, leakage or explosion resulting in chemical burns."

## Products with replaceable button/coin cell batteries shall additionally include:

- The statement "Ensure the batteries are installed correctly according to polarity (+ and -)."
- The statement "Do not mix old and new batteries, different brands or types of batteries, such as alkaline, carbon-zinc, or rechargeable batteries."
- The statement "Remove and immediately recycle or dispose of batteries from equipment not used for an extended period of time according to local regulations."
- The statement "Always completely secure the battery compartment. If the battery compartment does not close securely using the product, remove the batteries, and keep them away from children."

-08-

## IC Caution:

This device complies with Industry Canada's licence-exempt RSSs. Operation is subject to the following two conditions:

- [1] This device may not cause interference; and
  - [2] This device must accept any interference, including interference that may cause undesired operation of the device.
- To maintain compliance with RF exposure guidelines, this equipment should be installed and operated with a minimum distance of 20cm between the radiator and your body.
- Le présent appareil est conforme aux CNR d'Industrie Canada applicables aux appareils radio exempts de licence. L'exploitation est autorisée aux deux conditions suivantes:
- (1) l'appareil ne doit pas produire de brouillage, et
  - (2) l'utilisateur de l'appareil doit accepter tout brouillage radioélectrique subi, même si le brouillage est susceptible d'en compromettre le fonctionnement.
- Pour maintenir la conformité aux directives d'exposition aux radiofréquences, cet équipement doit être installé et utilisé avec une distance minimale de 20 cm entre le radiateur et votre corps.

## Warning

1. Please pay attention to prevent static electricity during the installation and use of the product. Do not use sharp objects to touch the product, and avoid contact to the strong chemicals such as strong acid and alkali.
2. During installation, the bent part should be avoided just in the position of the LED components, so as not to damage the product and affect its service life.

## Warranty description

This product has one-year warranty from the day after signing. Please contact us if you have any questions or issues.



Made in china

NEED HELP?  
 support@hellofairyapp.com  
 contact@hellofairyapp.com

## FCC WARNING

This device complies with part 15 of the FCC Rules. Operation is subject to the following two conditions: (1) this device may not cause harmful interference, and (2) this device must accept any interference received, including interference that may cause undesired operation.

Any changes or modifications not expressly approved by the party responsible for compliance could void the user's authority to operate the equipment.

NOTE: This equipment has been tested and found to comply with the limits for a Class B digital device, pursuant to Part 15 of the FCC Rules. These limits are designed to provide reasonable protection against harmful interference in a residential installation. This equipment generates, uses and can radiate radio frequency energy and, if not installed and used in accordance with the instructions, may cause harmful interference to radio communications.

However, there is no guarantee that interference will not occur in a particular installation.

If this equipment does cause harmful interference to radio or television reception, which can be determined by turning the equipment off and on, the user is encouraged to try to correct the interference by one or more of the following measures:

- Reorient or relocate the receiving antenna.
- Increase the separation between the equipment and receiver.
- Connect the equipment into an outlet on a circuit different from that to which the receiver is connected.
- Consult the dealer or an experienced radio/TV technician for help.

To maintain compliance with FCC's RF Exposure guidelines, This equipment should be installed and operated with minimum distance between 20cm the radiator your body: Use only the supplied antenna.