



www.powervision.me

Connection

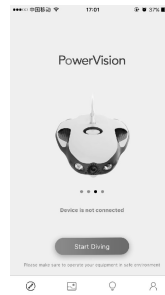


1. When the three probes of PowerSeeker immerse into water, the system will automatically start, and the six blue fish lamps in the bottom will light up for long.

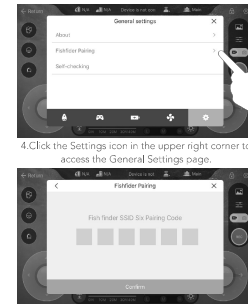


2. Turn on the wireless local area network of the mobile, and connect it to the Wi-Fi of the PowerSeeker "PSE_000". No connection password.

Pairing



3. Turn on Vision+ APP, enter PowerRay control interface, and click "Start Diving".



4. Click the Settings icon in the upper right corner to access the General Settings page.

5. Click PowerSeeker Pairing, enter the last six digits of the PowerSeeker Label, and click "Confirm" to complete the pairing.

PowerSeeker

User's Guidance

PowerVision

Operation

- Use with PowerRay



6. In the main interface, click the "🐟" button to switch to the fish seeking interface, then you can start to use PowerSeeker.

- Use stand alone



7. Enter Vision+ APP, swap to PowerSeeker interface and tap 'start looking for fish'.

Turning Off



8. When PowerSeeker leave the surface and the probe get dry for 1 min, the system will stop working and shut down automatically.

FCC

This equipment has been tested and found to comply with the limits for a Class B digital device, pursuant to Part 15 of the FCC Rules. These limits are designed to provide reasonable protection against harmful interference in a residential installation. This equipment generates uses and can radiate radio frequency energy and, if not installed and used in accordance with the instructions, may cause harmful interference to radio communications. However, there is no guarantee that interference will not occur in a particular installation. If this equipment does cause harmful interference to radio or television reception, which can be determined by turning the equipment off and on, the user is encouraged to try to correct the interference by one or more of the following measures:

- Reorient or relocate the receiving antenna.
- Increase the separation between the equipment and receiver.
- Connect the equipment into an outlet on a circuit different from that to which the receiver is connected.
- Consult the dealer or an experienced radio/TV technician for help.

Changes or modifications not expressly approved by the party responsible for compliance could void the user's authority to operate the equipment.

This device complies with part 15 of the FCC Rules. Operation is subject to the following two conditions: (1) This device may not cause harmful interference, and (2) this device must accept any interference received, including interference that may cause undesired operation.

PowerSeeker

The antenna(s) used for this transmitter must be installed to provide a separation distance of at least 20 cm from all persons and must not be co-located or operating in conjunction with any other antenna or transmitter. This equipment complies with FCC radiation exposure limits set forth for an uncontrolled environment. End user must follow the specific operating instructions for satisfying RF exposure compliance. This transmitter must not be co-located or operating in conjunction with any other antenna or transmitter.

IC

This device complies with Industry Canada's licence-exempt RSSs. Operation is subject to the following two conditions: (1) This device may not cause interference; and (2) This device must accept any interference, including

interference that may cause undesired operation of the device.

Cet appareil est conforme aux CNR exempts de licence d'Industrie Canada. Le fonctionnement est soumis aux deux conditions suivantes:

- (1) Ce dispositif ne peut causer des interférences; et
- (2) Cet appareil doit accepter toute interférence, y compris les interférences qui peuvent causer un mauvais fonctionnement de l'appareil.

PowerSeeker

The antenna(s) used for this transmitter must be installed to provide a separation distance of at least 20 cm from all persons and must not be co-located or operating in conjunction with any other antenna or transmitter. This equipment complies with ISED radiation exposure limits set forth for an uncontrolled environment. End user must follow the specific operating instructions for satisfying RF exposure compliance. This transmitter must not be co-located or operating in conjunction with any other antenna or transmitter.

Cet équipement est conforme aux limites d'exposition aux rayonnements ISED établies pour un environnement non contrôlé. L'utilisateur doit suivre les instructions spécifiques pour satisfaire les normes. Cet émetteur ne doit pas être co-implanté ou fonctionner en conjonction avec toute autre antenne ou transmetteur.

Cet équipement est conforme Canada limites d'exposition aux radiations dans un environnement non contrôlé. Cet équipement doit être installé et utilisé à distance minimum de 20cm entre le radiateur et votre corps.

CE

Operation frequency: 2400 to 2483.5MHz; Maximum output power: 100mW for EU. Hereby, [PowerVision Tech Inc.] declares that the radio equipment type [Power Seeker] is in compliance with Directive 2014/53/EU. The full text of the EU declaration of conformity is available at the following internet address: www.powervision.me.