

**Appendix A:SAR System performance Check Plots**

**Table of contents**

**System Performance Check-D2450**

Test Laboratory: CTI SAR Lab

**Systemcheck 2450-Head****DUT: D2450V2 - SN959; Type: D2450V2; Serial: SN959**

Communication System: UID 0, CW (0); Communication System Band: D2450 (2450.0 MHz); Frequency: 2450 MHz; Duty Cycle: 1:1

Medium parameters used:  $f = 2450$  MHz;  $\sigma = 1.86$  S/m;  $\epsilon_r = 38.792$ ;  $\rho = 1000$  kg/m<sup>3</sup>

Phantom section: Flat Section

DASY Configuration:

- Probe: EX3DV4 - SN7328; ConvF(7.67, 7.67, 7.67); Calibrated: 2/3/2021;
- Sensor-Surface: 1.4mm (Mechanical Surface Detection),  $z = 1.0, 31.0$
- Electronics: DAE4 Sn1458; Calibrated: 1/8/2021
- Phantom: ELI v6.0; Type: QDOVA003AA; Serial: 2024
- DASY52 52.8.8(1222); SEMCAD X 14.6.10(7331)

**Configuration/d=10mm,Pin=250mW/Area Scan (10x10x1):** Measurement grid:  $dx=12$ mm,  $dy=12$ mm

Maximum value of SAR (measured) = 16.3 W/kg

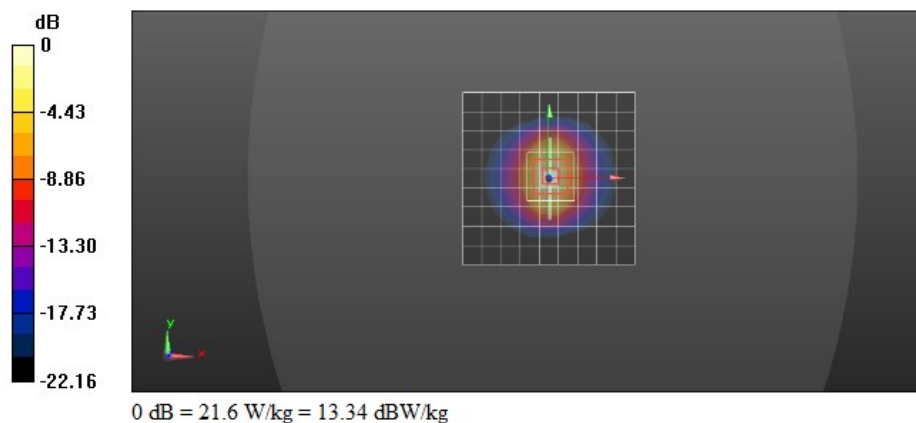
**Configuration/d=10mm,Pin=250mW/Zoom Scan (7x7x7)/Cube 0:** Measurement grid:  $dx=5$ mm,  $dy=5$ mm,  $dz=5$ mm

Reference Value = 113.6 V/m; Power Drift = -0.13 dB

Peak SAR (extrapolated) = 27.4 W/kg

**SAR(1 g) = 12.7 W/kg; SAR(10 g) = 5.89 W/kg**

Maximum value of SAR (measured) = 21.6 W/kg



Test Laboratory: CTI SAR Lab

**Systemcheck 2450-Head****DUT: D2450V2 - SN959; Type: D2450V2; Serial: SN959**

Communication System: UID 0, CW (0); Communication System Band: D2450 (2450.0 MHz); Frequency: 2450 MHz; Duty Cycle: 1:1

Medium parameters used:  $f = 2450$  MHz;  $\sigma = 1.836$  S/m;  $\epsilon_r = 38.624$ ;  $\rho = 1000$  kg/m<sup>3</sup>

Phantom section: Flat Section

## DASY Configuration:

- Probe: EX3DV4 - SN7328; ConvF(7.67, 7.67, 7.67); Calibrated: 2/3/2021;
- Sensor-Surface: 1.4mm (Mechanical Surface Detection),  $z = 1.0, 31.0$
- Electronics: DAE4 Sn1458; Calibrated: 1/8/2021
- Phantom: ELI v6.0; Type: QDOVA003AA; Serial: 2024
- DASY52 52.8.8(1222); SEMCAD X 14.6.10(7331)

**Configuration/d=10mm,Pin=250mW/Area Scan (10x10x1):** Measurement grid:  $dx=12$ mm,  $dy=12$ mm

Maximum value of SAR (measured) = 15.6 W/kg

**Configuration/d=10mm,Pin=250mW/Zoom Scan (7x7x7)/Cube 0:** Measurement grid:  $dx=5$ mm,  $dy=5$ mm,  $dz=5$ mm

Reference Value = 116.6 V/m; Power Drift = -0.03 dB

Peak SAR (extrapolated) = 28.8 W/kg

**SAR(1 g) = 13.5 W/kg; SAR(10 g) = 6.22 W/kg**

Maximum value of SAR (measured) = 22.8 W/kg

