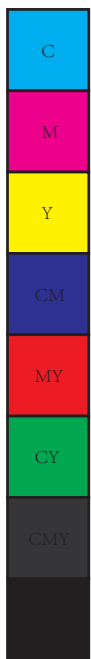


PowerRay Quick Start Guide



PowerVision





PowerRay

PowerRay Introduction	1-4
PowerRay Vehicle	
Base Station	
Remote controller	5-6
Fish finder	7-9
PowerSeeker	
Bait drop	
Download app and watch PowerRay tutorial videos	10

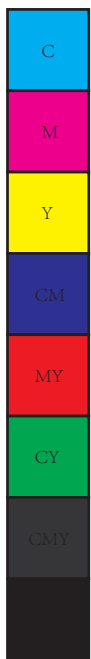
Diving preparation

Check the battery and Charging	11-15
Check the battery	
Charging	
Prepare PowerRay	16-17
Prepare remote controller	18
Prepare App	19-20
Prepare VR	21-22

Diving and safety

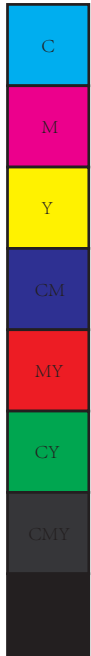
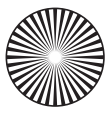
Diving and shooting	23-26
Remote controller for diving and Image capture	
App control for diving and Image capture	
Finding fish	27
Diving safety	28





PowerRay Introduction





PowerRay Introduction

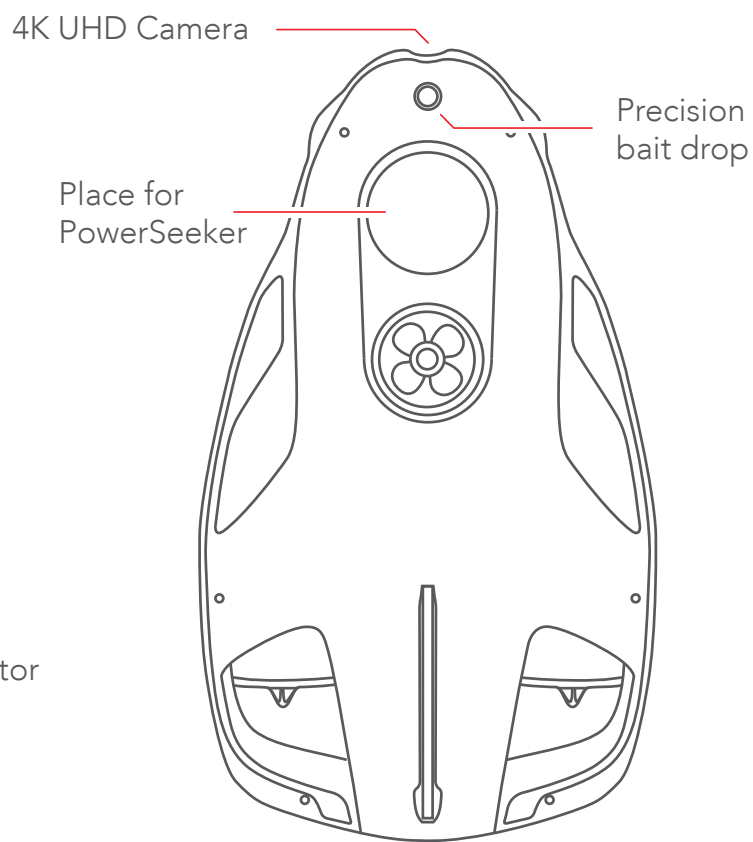
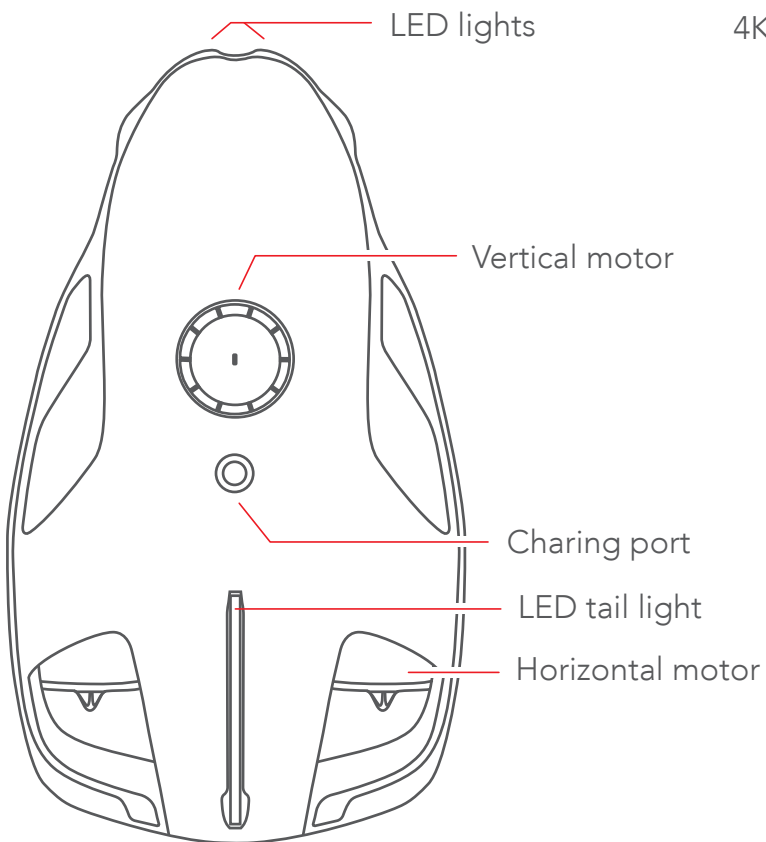
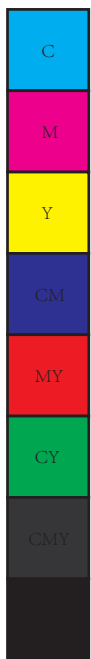
- **PowerRay Vehicle:PRA10**

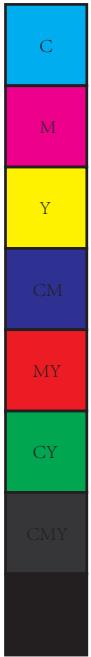
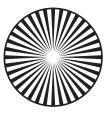
PowerRay can dive as deep as 98 feet underwater in freshwater or saltwater. You can set up fixed direction and fixed depth to swim PowerRay. It can be used for underwater photography, videography, fish detecting, and fish luring^①. Users can operate PowerRay through VR Goggle^②, transmitter, and app to stream real time video. It's integrated 4K UHD camera provides 12 million pixels for underwater photography and videography.

①Only PowerRay Angler/Wizard has fish finder and bait drop.

②Only PowerRay Wizard has VR google.





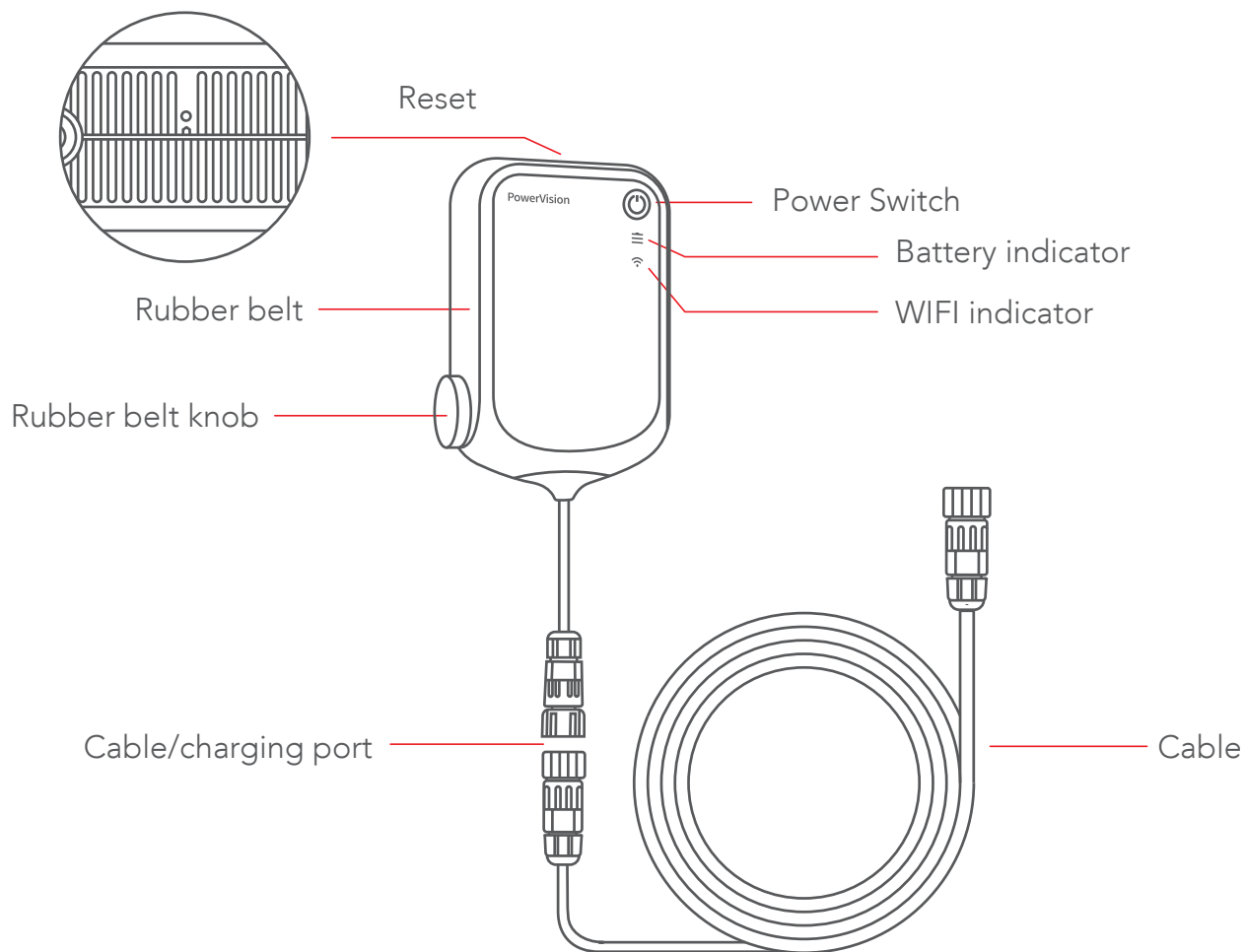
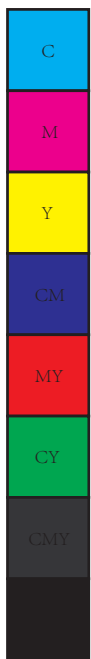


PowerRay Introduction:PRABS10

Base station

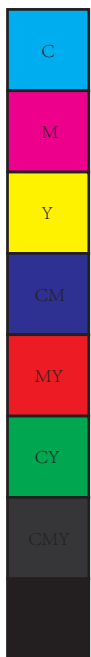
- Base station connects to the PowerRay vehicle through the cable. Remote controller, cell phone and VR goggle can connect to the base station and control the PowerRay, camera and receive live feed.
- The battery inside is 3000mAh and can work for up to 3 hours. Users can check the battery level through the battery indicator.
- Base station has a rubber belt which helps prevent the unit from slipping into the water.





04

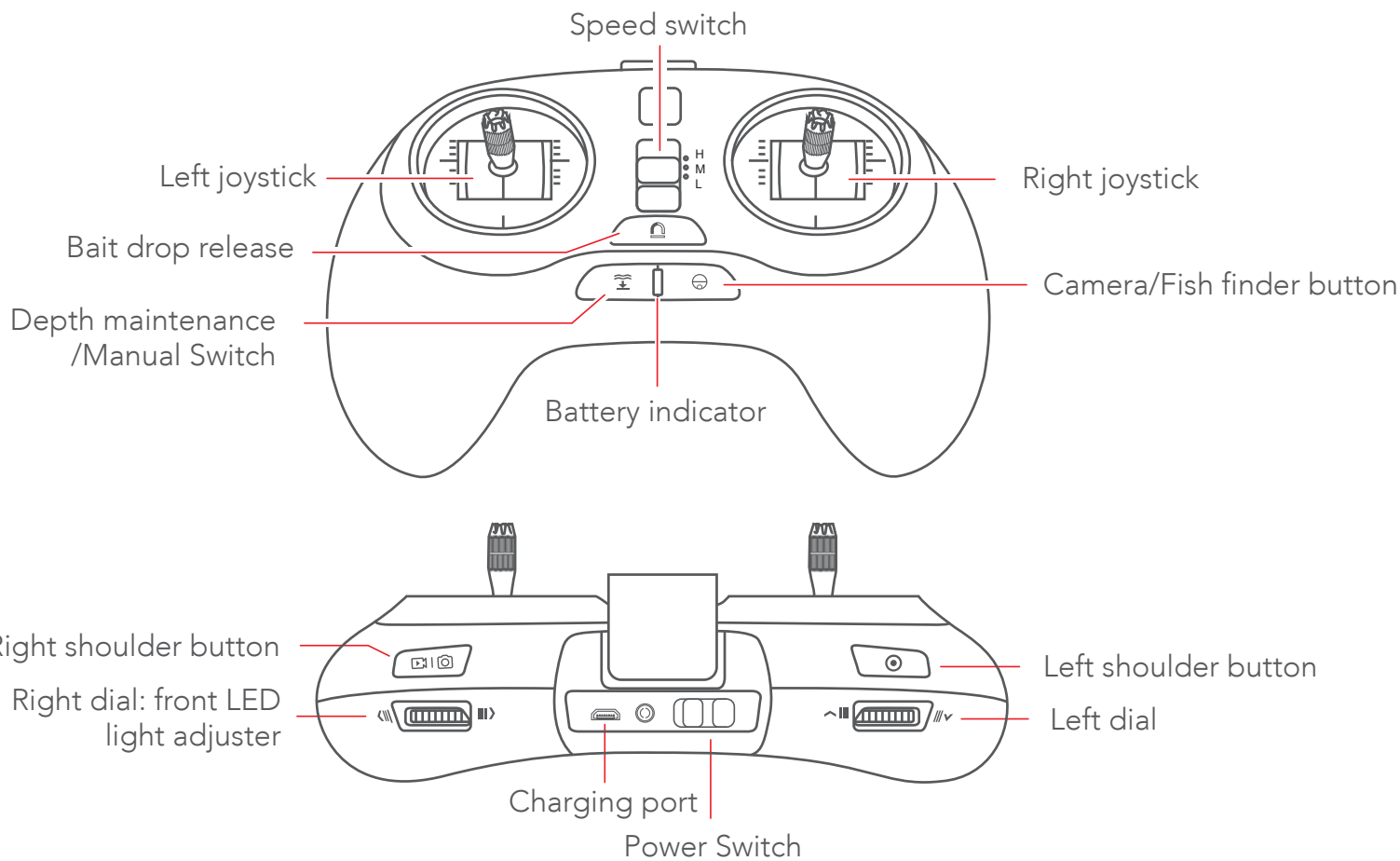
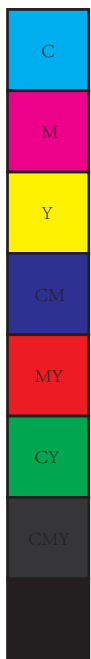


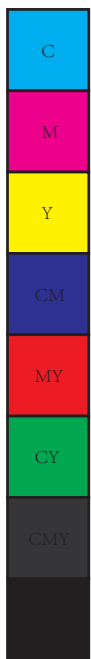


Remote controller:PRASC10

- PowerRay's transmitter connects with the base station wirelessly. The functions include operating the vehicle, LED lighting adjustment, speed adjustment, underwater photography, underwater videography, precision remote bait drop, fixed the depth and more. Users can operate PowerRay easily through the remote controller.
- The built-in rechargeable battery's capacity is 3000mAh and can operate continuously for up to 20 hours. Users can check the battery level through the battery indicator on the App.







Fish finder

PowerSeeker:PSE10 ★

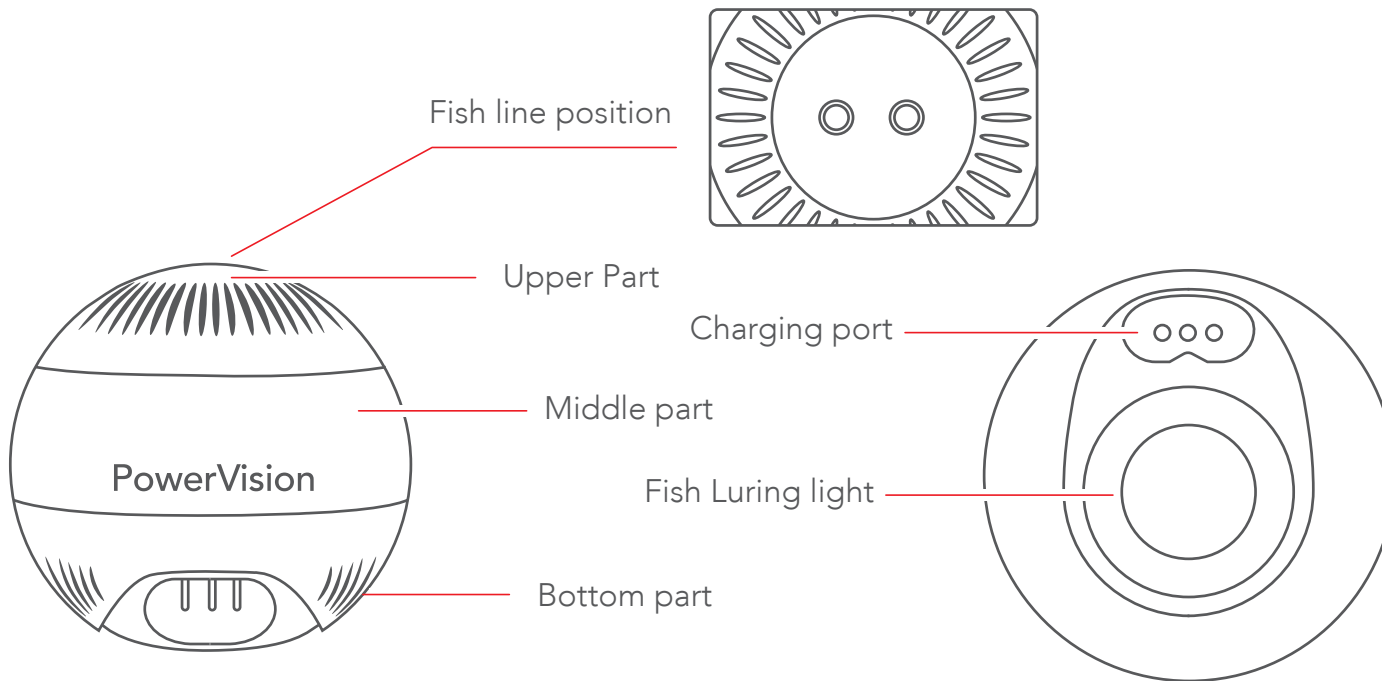
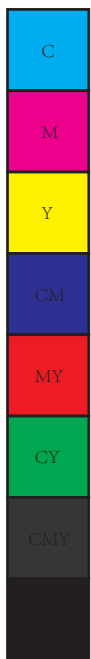
- PowerSeeker can detect fish and underwater landscape up to 131 feet below PowerRay and sends real time images to the app.
- The PowerSeeker is equipped with a fish luring light, which attracts fish to come closer.
- The PowerSeeker can be attached to the PowerRay or detached as a stand-alone fish finding device.

★ Only PowerRay Angler/Wizard has PowerSeeker and bait drop.





PowerSeeker *

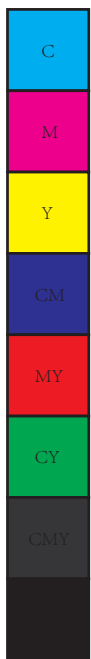


* Only PowerRay Angler/Wizard has PowerSeeker and bait drop.



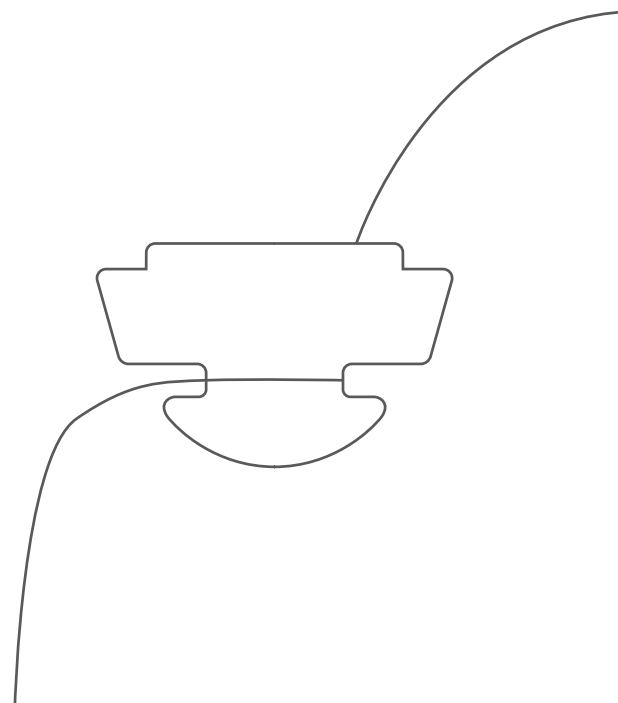


Fish finder device



Bait drop ★

Please put fish line on the hook, and operate the PowerRay to drop the bait through Remote controller or on Vision+.



★ Only PowerRay Angler/Wizard has fish finder and bait drop.

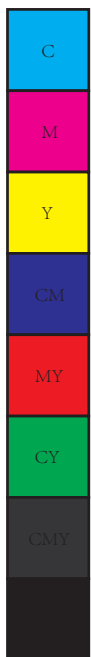




Download app and watch PowerRay tutorial videos

Download app and watch PowerRay tutorial videos

Please scan the QR code on the right side, or search Vision+ on Google Play/APP Store to download the Vision+ App.



中国区

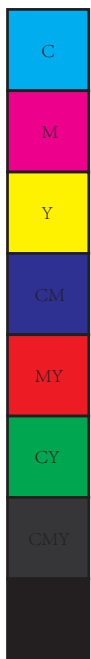


Europe



North America





Diving Preparation





Check the battery and charging

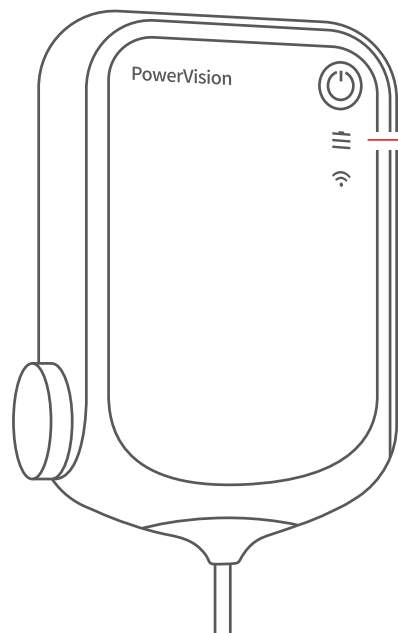
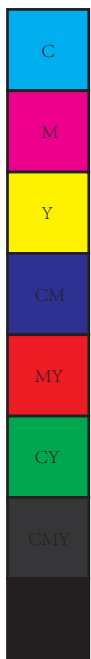
- **Battery level of vehicle**

PowerRay vehicle battery level is available from "Vision+" APP interface.





- **Battery level of base station**



check battery indicator



Green:above 60%



Yellow:60%~20%



Red:below 20%

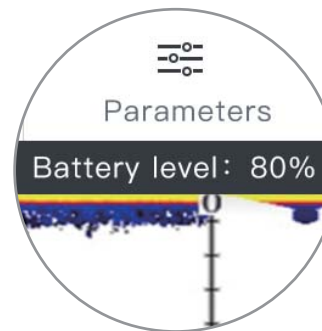




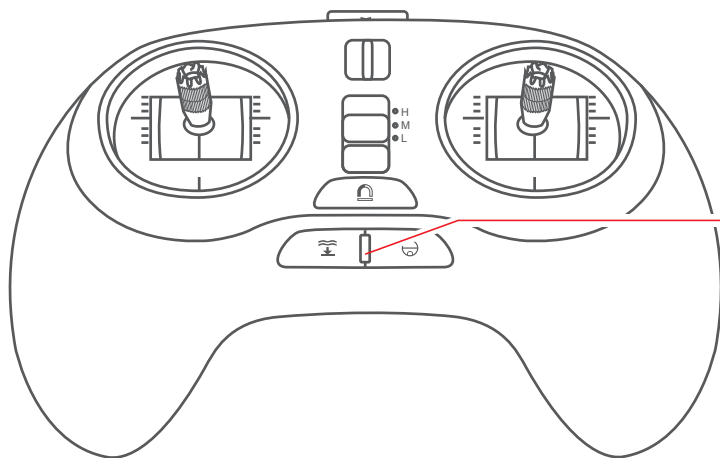
• Battery level of fish finder

The fish finder will automatically turn on when the charging port touches the water. It will turn off 1 minute after leaving the water.

You can read the battery level through Vision+ App.



• Battery level of remote controller



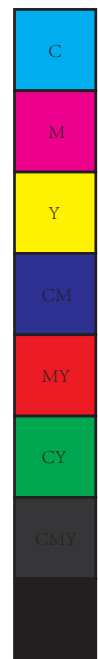
Check the battery indicator



Green:above 60%

Yellow:60%~20%

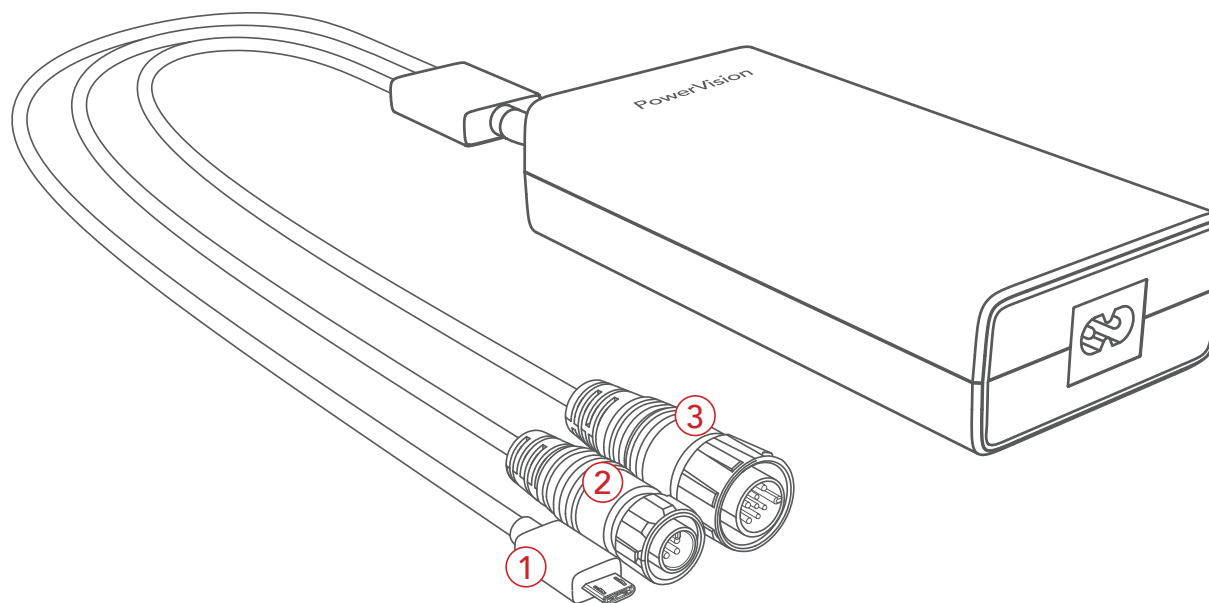
Red:below 20%

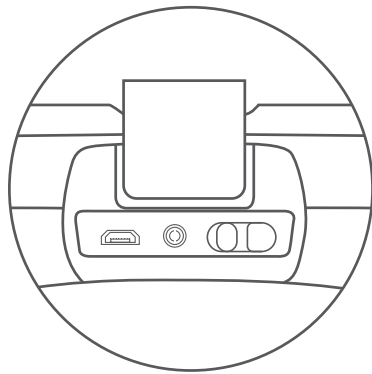
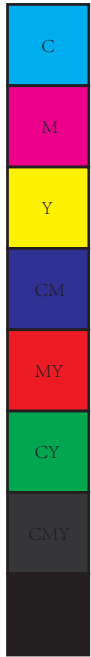




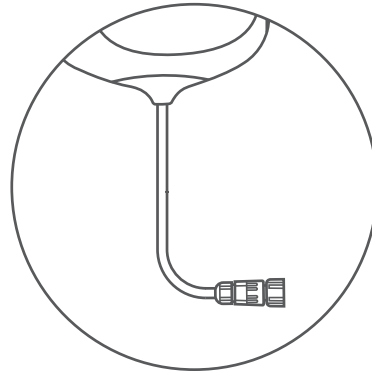
- **Charging**

The PowerRay adaptor can charge the PowerRay, transmitter, and the base station at the same time.

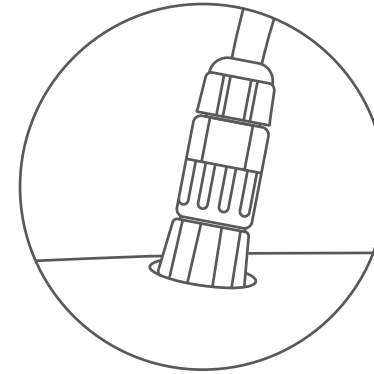




① Remote controller
can take~3.5 hours to be
fully charged

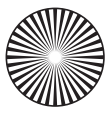


② Base Station
can take~2.5 hours to be
fully charged

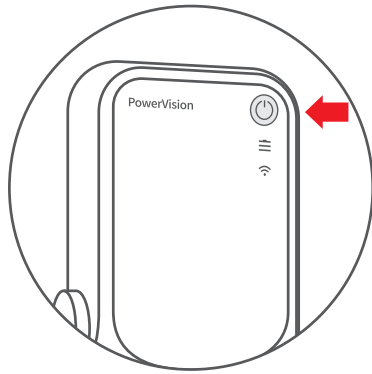


③ PowerRay vehicle
can take~2.5 hours to be
fully charged

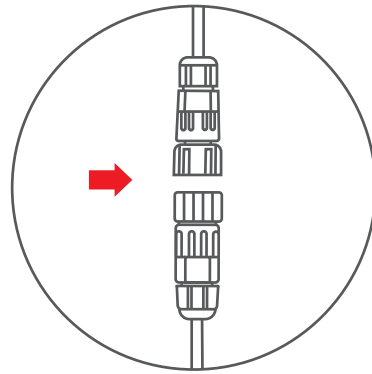




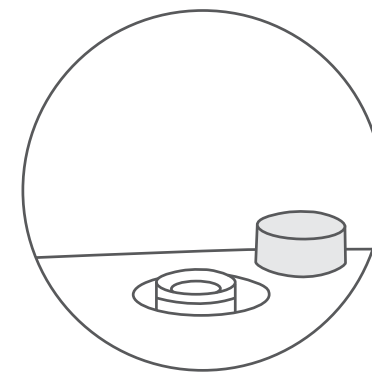
• Prepare PowerRay



1. Turn on the base station by pressing the power switch for 3 seconds.

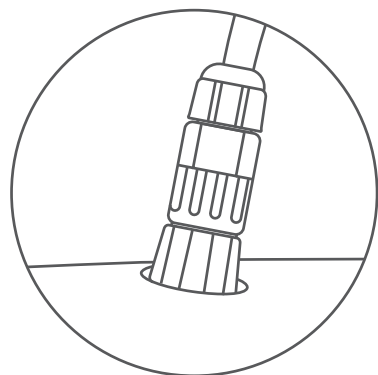
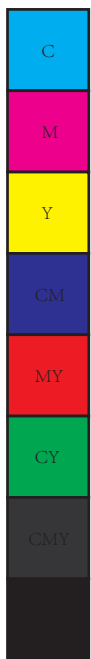


2. Plug the cable into base station.



3. Open the vehicle charging port protector.(make sure this is always 100% dry while doing this)





4.Plug the other side of the cable into PowerRay and make sure you have a tight connection.(make sure this is always 100% dry while doing this)



5.Use a cell phone or other mobile device to turn on the WiFi, connect to "PRA_Station_xxx", (default password is 1234567890).

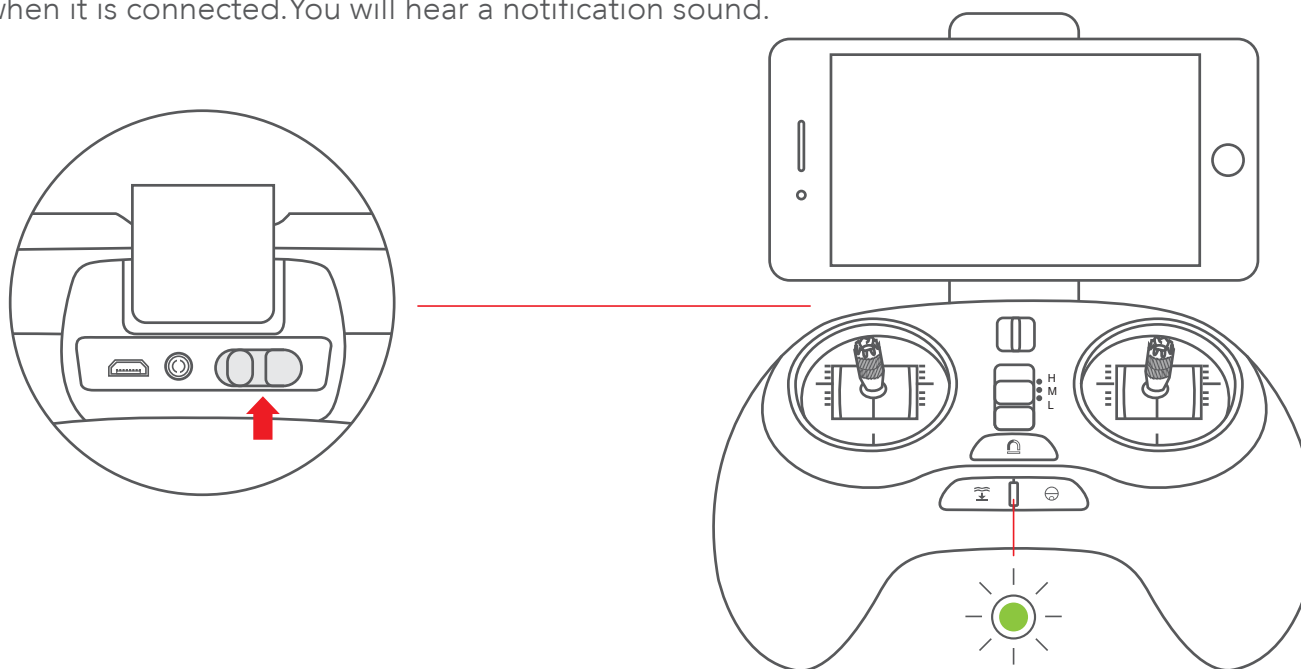
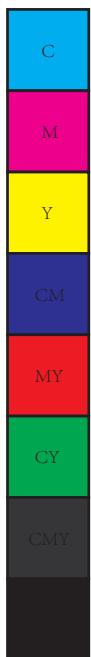




- **Prepare the remote controller**

Cell phones or tablets can be mounted on the brackets of the remote controller.

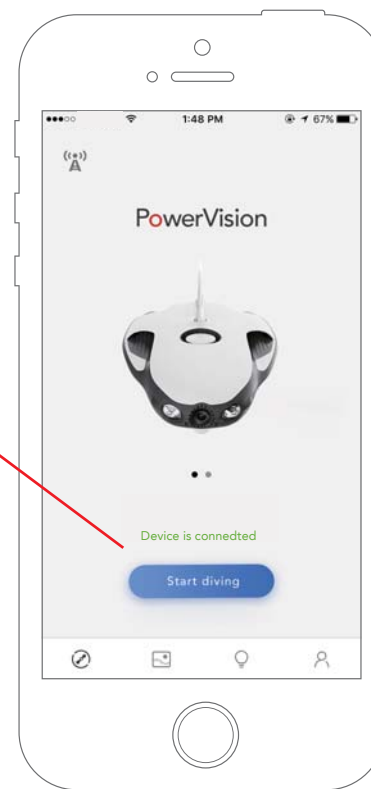
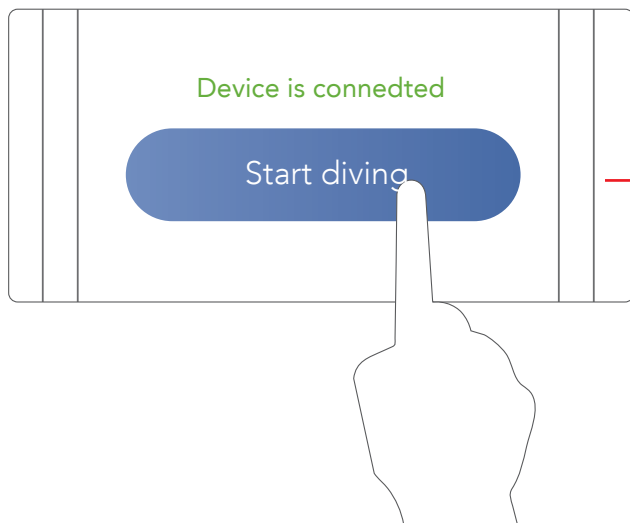
Turn on the remote controller. It will start searching for the base station. The remote controller light will turn green when it is connected. You will hear a notification sound.





• **Prepare the APP**

Make sure you connect to the WiFi. Launch the "Vision+" App and switch to PowerRay. When it shows "device connected", click on "Start Diving"





Base station battery Base station signal

Vehicle battery Connection status Master/slave mode

VR mode switch

Sonar mode switch

Bait drop

Left joystick

Water Depth

Depth maintenance switch

Speed mode

Front light control

Album

Camera parameters

Switch to photo or videos

Take photo or videos

Prompt message

Right joystick

DEPTH : 37M

0M 10M 20M 30M 40M

Battery power is less than 20%

"Vision+" APP Description

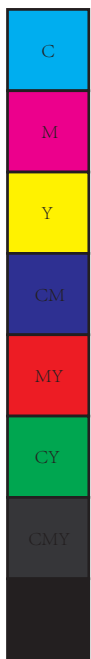




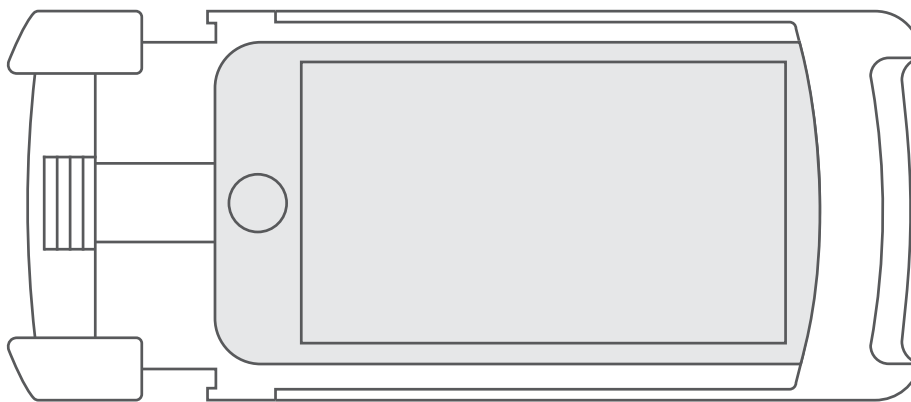
Prepare VR *

Switch the to VR mode in the app and put the phone into VR glasses.

1.Put phone into bracket and push back the bottom cover.



push back the
bottom cover

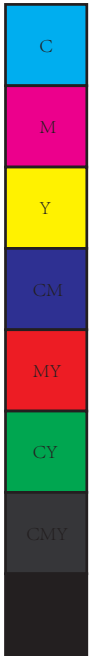
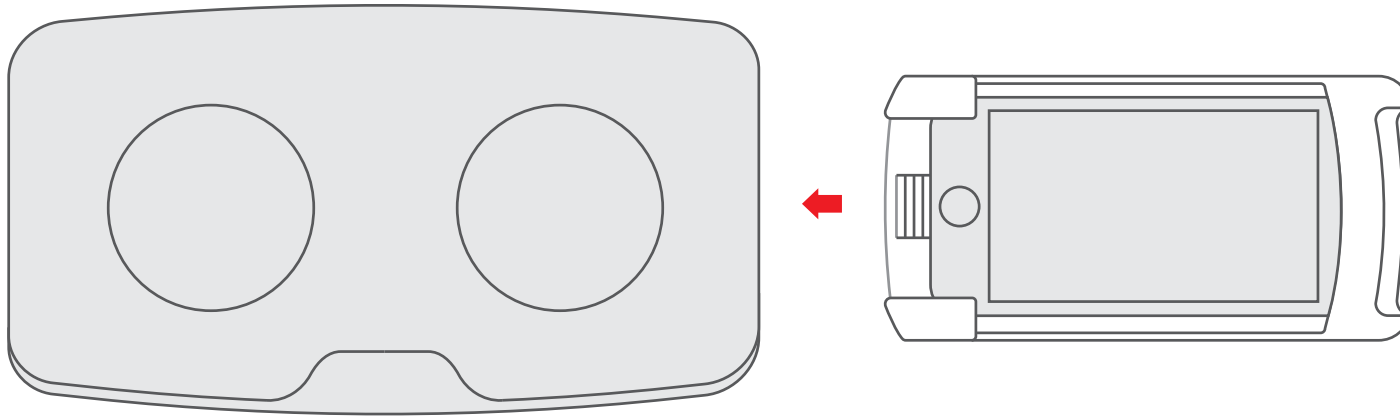


* Only PowerRay Wizard has this device.





2.Insert the bracket into VR goggle

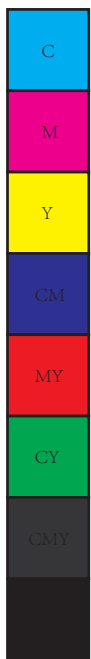


3. VR goggle head gesture function:

Head gesture function activation: Press down the left shoulder button on the controller to enable this function. You can move the PowerRay through head gestures. Release the left shoulder button to disable this function.

★ Only PowerRay Wizard has this device.





Diving and safety



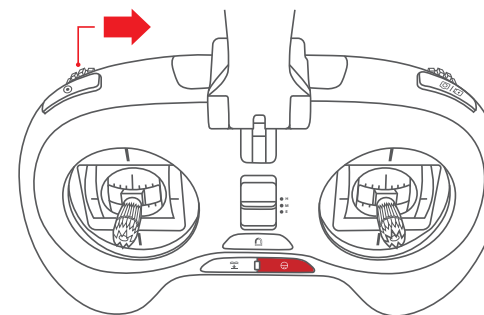


Diving and shooting

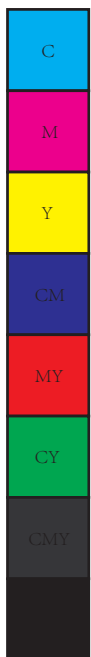
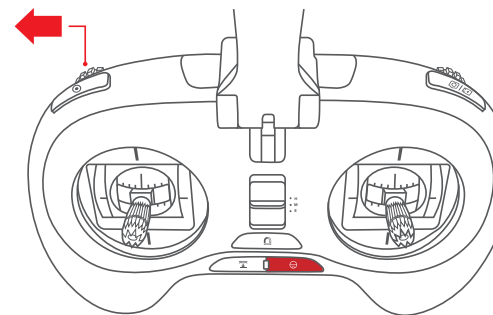
To prevent the user from spinning the propellers accidentally outside the water, user needs to unlock the PowerRay to enable the motors.

Locking & Unlocking PowerRay

-Lock: dial the left finger wheel to the right and press camera/fish finder button for 1 second until it vibrates.



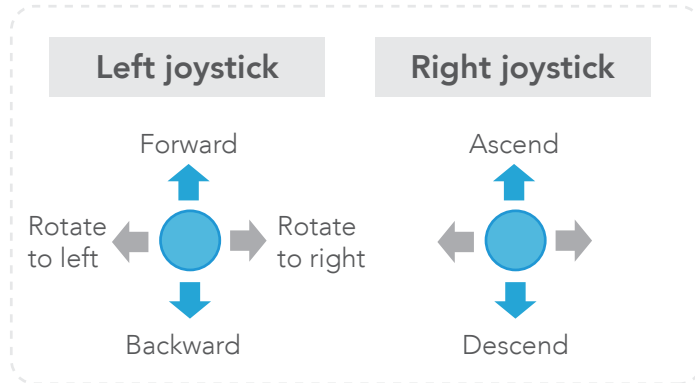
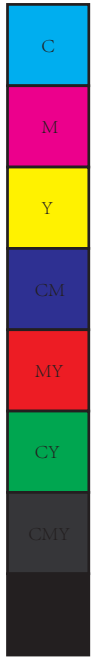
-Unlock: dial the left finger wheel to the left and press camera/fish finder button for 1 second until it vibrates.



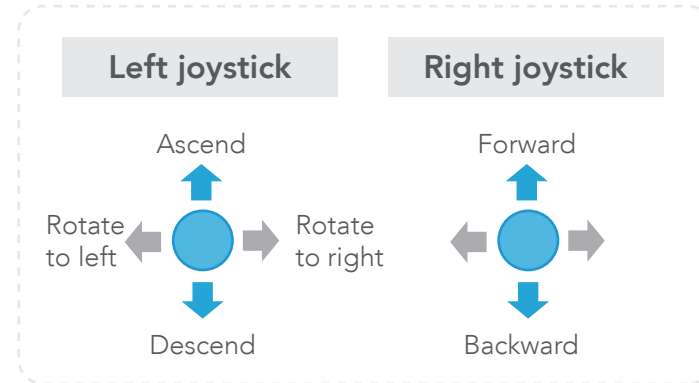


Modes - The remote controller's default mode is "MODE4".

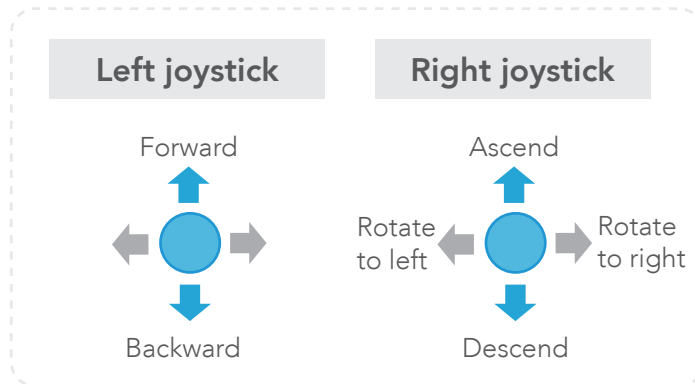
PowerRay has 4 modes to control it. Users can choose the mode with their behavior through App.



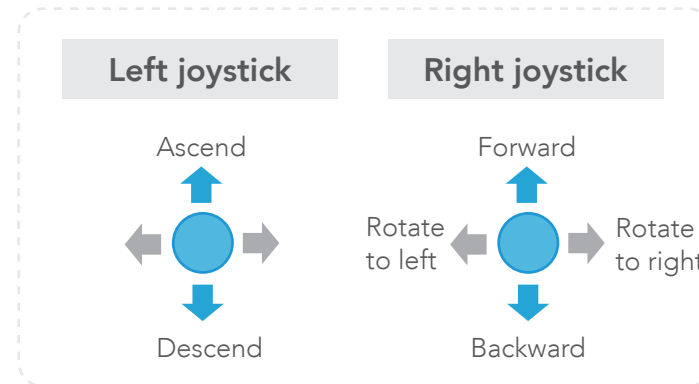
MODE1



MODE2



MODE3



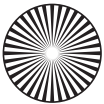
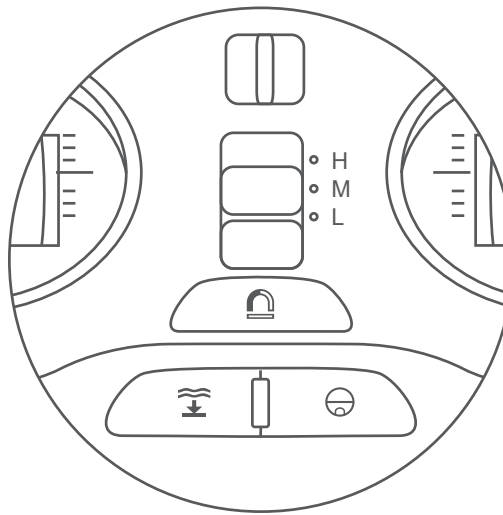
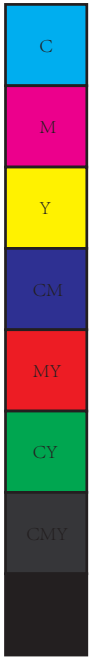
MODE4

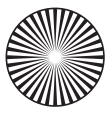




• Diving and shooting with standard controller

You can change the speed of the PowerRay by toggling the switch between the two joysticks. (High, Medium, and Low speed)



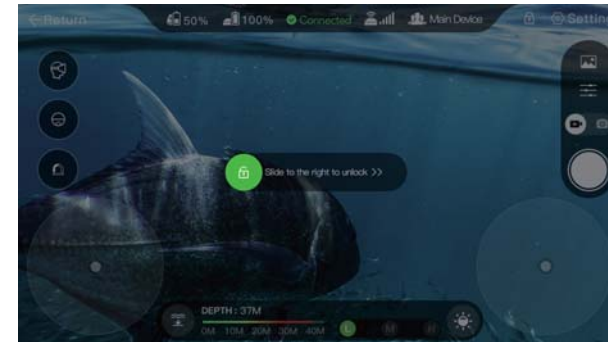


• Diving and shooting with App

Default mode is "MODE4"

1. Unlock and choose the speed mode:

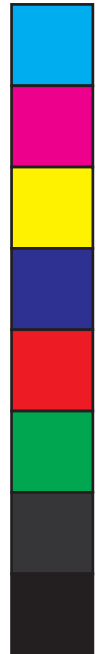
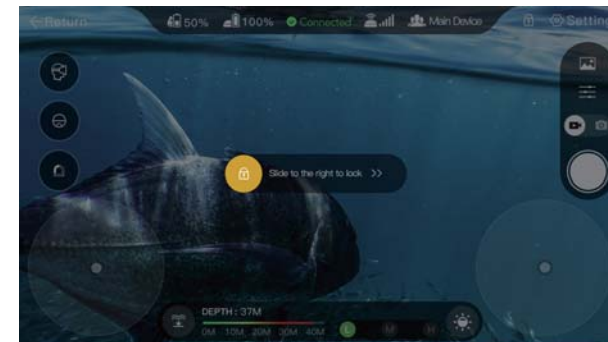
You can click the top right corner button and slide to the right to unlock the PowerRay. You can choose the speed mode at the bottom of the APP interface.



2. Default mode is "MODE4"


3. Lock:

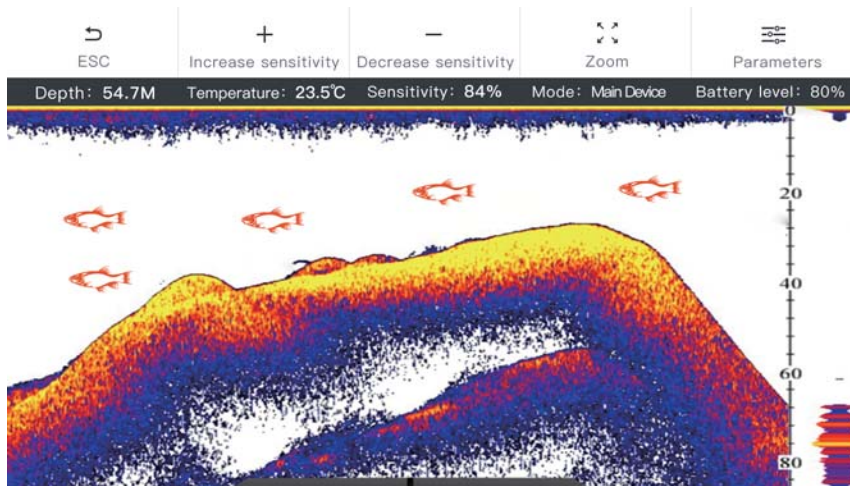
To prevent accident from happening, you need to lock the PowerRay. You can click the top right corner icon and slide to the right to lock it.





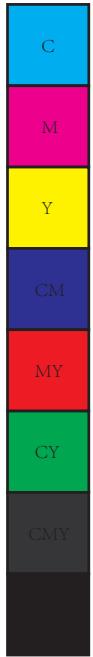
Finding fish

1. Fish finder needs to be installed on the PowerRay before plugging in the Power cable.
2. After turning on the PowerRay, the fish finder will start to work after it enters in the water.
3. Fish finder will automatically connect to the PowerRay. You can connect to the fish finder Wi-Fi called "PSE_xxx". No password needed.
4. You can click PowerRay APP  to switch to Fish finder interface.

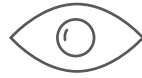


Note: You are able to adjust the display parameters to change the display effect. You can also turn on/off the fish detection notification.

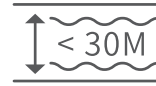




Diving in a open water



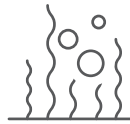
Within visual range



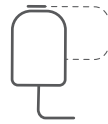
Depth less than 30m



Turn off the base station to save battery



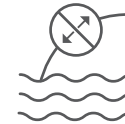
Avoid waterweed



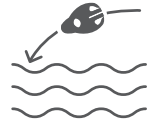
Fix the base station before use



NEVER drop the base station into water



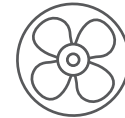
Do NOT drag the cable with strong force



Do NOT throw into water



Avoid Hot environment

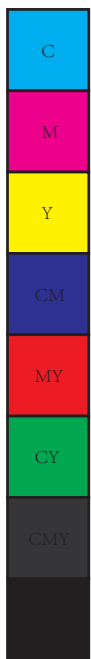


Do NOT spin motors in the Air outside of the water



Do NOT touch spinning propellers





FCC

This equipment has been tested and found to comply with the limits for a Class B digital device, pursuant to Part 15 of the FCC Rules. These limits are designed to provide reasonable protection against harmful interference in a residential installation. This equipment generates uses and can radiate radio frequency energy and, if not installed and used in accordance with the instructions, may cause harmful interference to radio communications. However, there is no guarantee that interference will not occur in a particular installation. If this equipment does cause harmful interference to radio or television reception, which can be determined by turning the equipment off and on, the user is encouraged to try to correct the interference by one or more of the following measures:

- Reorient or relocate the receiving antenna.
- Increase the separation between the equipment and receiver.
- Connect the equipment into an outlet on a circuit different from that to which the receiver is connected.
- Consult the dealer or an experienced radio/TV technician for help.

Changes or modifications not expressly approved by the party responsible for compliance could void the user's authority to operate the equipment.

This device complies with part 15 of the FCC Rules. Operation is subject to the following two conditions: (1) This device may not cause harmful interference, and (2) this device must accept any interference received, including interference that may cause undesired operation.

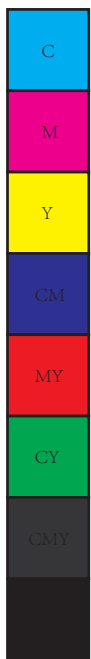
PowerRay Vehicle/Base Station/PowerSeeker

The antenna(s) used for this transmitter must be installed to provide a separation distance of at least 20 cm from all persons and must not be co-located or operating in conjunction with any other antenna or transmitter. This equipment complies with FCC radiation exposure limits set forth for an uncontrolled environment. End user must follow the specific operating instructions for satisfying RF exposure compliance. This transmitter must not be co-located or operating in conjunction with any other antenna or transmitter.

PowerRay Standard Controller

The portable device is designed to meet the requirements for exposure to radio waves established by the Federal Communications Commission (USA). These requirements set a SAR limit of 1.6 W/kg averaged over one gram of tissue. The highest SAR value reported under this standard during product certification for use when properly worn on the body. PowerRay Standard Controller: The highest measured body SAR value(1g) is: 0.070W/kg.





IC

This device complies with Industry Canada's licence-exempt RSSs. Operation is subject to the following two conditions:(1) This device may not cause interference; and(2) This device must accept any interference, including interference that may cause undesired operation of the device.

Cet appareil est conforme aux CNR exempts de licence d'Industrie Canada. Le fonctionnement est soumis aux deux conditions suivantes:(1) Ce dispositif ne peut causer des interférences; et(2) Cet appareil doit accepter toute interférence, y compris les interférences qui peuvent causer un mauvais fonctionnement de l'appareil.

PowerRay Vehicle/Base Station/PowerSeeker

The antenna(s) used for this transmitter must be installed to provide a separation distance of at least 20 cm from all persons and must not be co-located or operating in conjunction with any other antenna or transmitter. This equipment complies with ISED radiation exposure limits set forth for an uncontrolled environment. End user must follow the specific operating instructions for satisfying RF exposure compliance. This transmitter must not be co-located or operating in conjunction with any other antenna or transmitter.

Cet équipement est conforme aux limites d'exposition aux rayonnements ISED établies pour un environnement non contrôlé. L'utilisateur doit suivre les instructions spécifiques pour satisfaire les normes. Cet émetteur ne doit pas être co-implanté ou fonctionner en conjonction avec toute autre antenne ou transmetteur.

Cet équipement est conforme Canada limites d'exposition aux radiations dans un environnement non contrôlé. Cet équipement doit être installé et utilisé à distance minimum de 20cm entre le radiateur et votre corps.

PowerRay Standard Controller

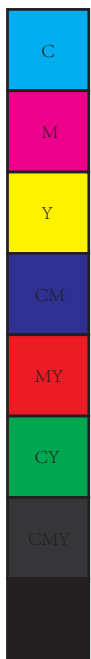
The portable device is designed to meet the requirements for exposure to radio waves established by the ISED. These requirements set a SAR limit of 1.6 W/kg averaged over one gram of tissue. The highest SAR value reported under this standard during product certification for use when properly worn on the body. PowerRay Standard Controller: The highest measured body SAR value(1g) is: 0.070W/kg.

Le dispositif portable est conçu pour répondre aux exigences d'exposition aux ondes radio établie par le développement énergétique DURABLE. Ces exigences un SAR limite de 1,6 W/kg en moyenne pour un gramme de tissu. La valeur SAR la plus élevée signalée en vertu de cette norme lors de la certification de produit à utiliser lorsqu'il est correctement porté sur le corps.

CE

Operation frequency: 2400 to 2483.5MHz; Maximum output power: 100mW for EU. Hereby, [Powervision Tech Inc.] declares that the radio equipment type [PowerRay] is in compliance with Directive 2014/53/EU. The full text of the EU declaration of conformity is available at the following internet address: www.powervision.me.





PowerVision
www.powervision.me

