

成品尺寸: 85x110mm

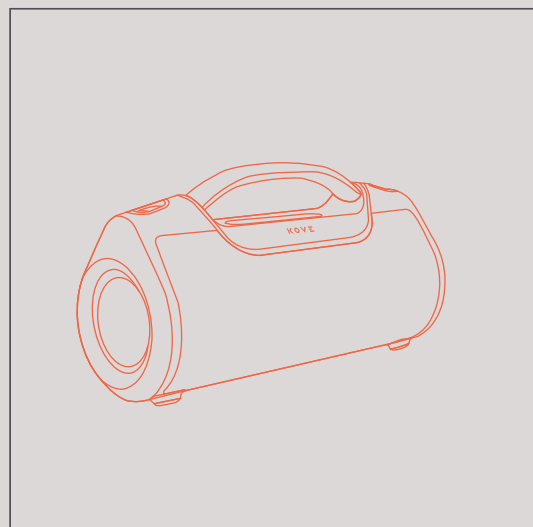
材质: 128G双铜, 正反面印刷, 折页

 Pantone 1665 U

 Pantone Cool Gray 1 U

正面

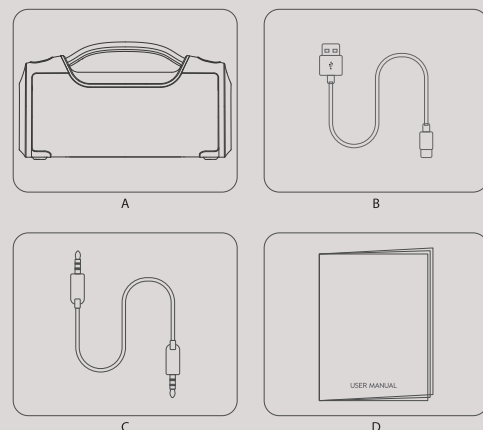
KOVE



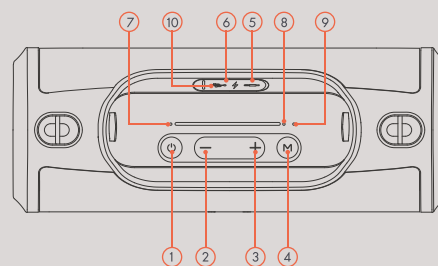
KASITA
Wireless Bluetooth Boombox

INCLUDED

- A. Bluetooth speaker
- B. Charging cable
- C. 3.5mm AUX cable
- D. User manual



BASIC FUNCTIONS



- ① Power on/off/ Play/ Pause/BT
- ② Volume -
(Long press for previous song)
- ③ Volume +
(long press for next song)
- ④ M Button (MODE/TWS/EQ)
- ⑤ AUX audio input port
- ⑥ USB-C charging port
- ⑦ Blue: Bluetooth indicator light
Green: AUX indicator light
White: USB indicator light
Red: Charging indicator light
- ⑧ White: TWS indicator light
- ⑨ Microphone
- ⑩ USB-A port / U Disk port
(support USB,5V/2A output)

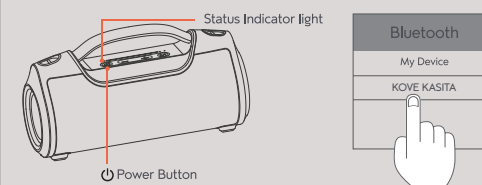
OPERATION GUIDE

1. POWER ON/OFF

Long press power button "⏻" for 2-3 seconds to power on/off.

2. BLUETOOTH CONNECTION

It will enter to Bluetooth mode after power on, and the blue indicator light will flash. Then choose "KOVE KASITA" from devices list. You will hear voice prompt once it connected, and the blue indicator light will long on. Then you can start to play your music. Double press "⏻" quickly to disconnect Bluetooth connection.



3. VOLUME CONTROL

Short press "+" to increase volume, short press "-" to decrease volume; when its volume increase to maximum volume, you will hear "Beep" voice prompt.

PREVIOUS/ NEXT SONG CONTROL:

Long press "+" for 2 seconds to play next song, long press "-" for 2 seconds to play previous song on Bluetooth mode.

OPERATION ON PLAYING STATUS:

Short press "⏻" to pause playing, press again to start playing on Bluetooth mode; Short press "⏻" to mute, press again to un-mute on Aux mode.

EQ SWITCH:

Default standard sound effect. Double press "M" to switch EQ, Standard → Outdoor → 3D sound effect. The Bluetooth indicator light will flash when switch EQ on Bluetooth mode. The AUX indicator light will flash when switch EQ on Aux mode. USB indicator light will flash when switch EQ on USB mode.

MODE SWITCH

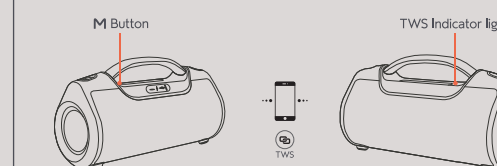
Default: Bluetooth Mode. Short press "M" to switch Mode, Bluetooth → Aux → USB playback.

4. HANDSFREE CALL

When Bluetooth connected successfully, speaker enter into Bluetooth handsfree status automatically when you call at that time. When call coming, short press "⏻" to pick up, press again to hang up. Quick press twice to reject the call.

5. TWS CONNECTION

If you have two "KASITA", power on both of them, they will enter to Bluetooth mode. Long press each of their "M" button, the white TWS indicator light will flash. Then they will connect with each other automatically. After they connected successfully, both of their white indicator light will long on. The master mode's blue indicator light will keep flashing, the sub-master mode's blue indicator light will long on. Repeat the Point 2 Bluetooth Connection, connect the model with your phone. After the two models successfully connected with your phone, both of them will play music at the same time.

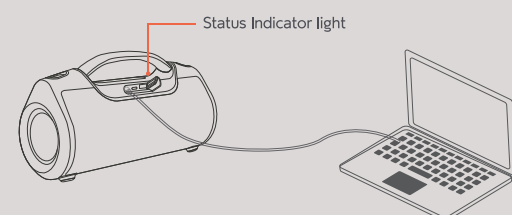


Remark: 1. Two speakers are needed and both must be on Bluetooth mode.
2. Before TWS pairing, don't pair any other device for speaker.

反面

6. AUX-IN MODE

Use 3.5mm Aux cable to connect "KASITA" and device, it will switch to Aux mode automatically, the green indicator light will on. Then you can play music immediately.

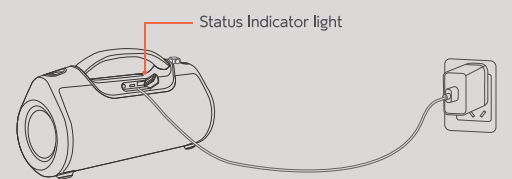


7. CHARGING

Important notice:

- Don't use no safety-certified adapter
- Use 5V/2A or above 2A adapter

1. Pls charge for the speaker when hearing low battery prompt voice.
2. Red indicator is on when charging, and it is off after full charge.
3. Short press the power button before using USB-A function if speaker is in off status



8. POWER SAVINGS

Under below situation, the speaker will power off to save battery power:
On BT mode, without any connection with any device for 10 minutes;
Long press "⏻" 2-3 seconds to power on after that.

9. USB PORT FEATURES

Your speaker has an integrated USB port which has two functions:

1) For playing music files stored on a USB drive:
Simply insert a USB drive with pre-loaded mp3/audio files into your speaker's USB port. A white LED will illuminate when in USB disk mode.

2) For charging smartphones and USB-powered devices:
Simply insert your device's USB charging cable into the speaker's USB port, then short press power button to charge your device. The charging output is 2A. Please use this feature only as a last resort (if your phone's battery is about to run out) as it will deplete the battery of the speaker thus reducing the music playback time.

This device complies with part 15 of the FCC Rules. Operation is subject to the following two conditions:

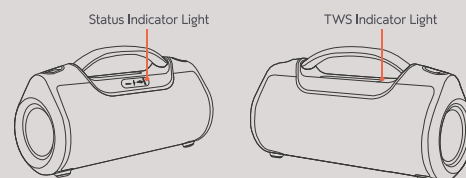
- (1) This device may not cause harmful interference, and
- (2) this device must accept any interference received, including interference that may cause undesired operation.

FCC ID: 2AKAX-KOVE-KASITA



MADE IN CHINA

FUNCTION INSTRUCTIONS



Power on	Blue indicator light will on when power on, and enter to Bluetooth mode automatically. And the blue indicator light will quick flash (on Bluetooth devices searching status) Green indicator light will on when connected by 3.5mm audio cable
Bluetooth mode	Blue indicator light on when Bluetooth connected successfully Blue indicator light keeps flashing if your Bluetooth devices out of range or disconnected. (on searching status)
AUX mode	Green indicator light will on when connected by 3.5mm audio cable
U Disk mode	White led indicator light will be on
TWS mode	TWS indicator light will quick flash when it is on TWS mode TWS indicator light long on when connected successfully
Charging mode	Red indicator light will on while charging; red indicator light will off when charging finished.
Low battery	Red indicator light will quick flash when battery low
Low battery power off	Speaker will power off automatically when battery lower than 10%, and you will hear power off voice prompt.

SPECIFICATIONS

Product Name	KASITA
Bluetooth Version	5.0
Battery Capacity	7200mAh
Playing Time	10~12h
Charging Time	3~4h
Speaker Unit	20Wx2 + 10Wx2 = 60W
Charging Current	5V/2A
USB-A Port	5V/2A output (max.)
Product Size	310 x 152 x 118mm
Product Weight	2164g±50

FAQ

- Q: What kind of charger should we use for the speaker?
A: All common USB chargers can be used, while we suggest the ones 5V/2A or above 2A.
- Q: What if there is noise or discontinuous sound during playing?
A: The speaker can be normally used within 10m under no obstruction environment. If it is beyond 10m or with obstruction, there might be noise or discontinuous sound.
- Q: Why the speaker power off automatically after power on but no Bluetooth disconnection?
A: When there is no Bluetooth pairing in 10 minutes, the speaker will shut down automatically to reduce power consumption.
- Q: Why does the speaker cannot connect the once-paired cellphone?
A: First, remove the speaker's paired name from the cellphone's Bluetooth List and then restart pairing.
- Q: What is the working sequence of the speaker?
A: Default mode is Bluetooth mode but when insert in AUX in cable, it will be AUX IN mode.
- Q: The speaker cannot be started up in a normal situation.
A: Please plug in the charger and try in a few minutes or try to long press power button 10-30s to reset.

Notes:

1. Please read this manual carefully before use and keep it properly.
2. For the first use, please fully charge the product.
3. Pls use certified adapter that has passed national safety certification.
4. If you do not use the product for a long time, be sure to charge it once within a month at least to maintain its performance.
5. Do not use this product in an extremely cold or hot environment, such as temperature beyonds the range of 5°C-35°C. If use it beyond the above range, the product may stop automatically to protect the internal circuit.
6. When charging it in a high temperature environment, the product may automatically stop charging to protect the battery. At this time, the charging indicator usually flashes quickly to indicate that the charging environmental temperature or the product internal temperature is too high.
7. Storage environment temperature: -5~35°C RH<70% (recommended 25°C±5).

Important safety instructions:

1. Do not disassemble or repair this speaker personally, otherwise it may cause product damage or personal injury.
2. Do not use it in dusty, humid, dry, and high-temperature environment.
3. Do not place this product near a heat source, or a place with direct sunlight, a lot of dust, or mechanical vibration.
4. In order to reduce the risk of fire, please do not cover this product with newspapers, tablecloths, curtains etc., during use.
5. If the product has a waterproof feature, please do not exceed the nominal parameter range when using it.
6. When the product is damaged such as the power cord or plug is damaged, liquid enters or objects fall into the device, unable to operate normally or falls, it must be repaired.
7. When the product is fully charged, do not connect it to the charger for further long time charging. The maximum ambient temperature should not exceed 40°C.

This speaker supports mobile phones/ tablets/ PCs etc. Here this User Manual is illustrated base on mobile phones.

FCC statement

This device complies with Part 15 of the FCC rules. Operation is subject to the following two conditions:

- 1) this device may not cause harmful interference, and
- 2) this device must accept any interference received, including interference that may cause undesired operation.

Note: This equipment has been tested and found to comply with the limits for a Class B digital device, pursuant to part 15 of the FCC Rules. These limits are designed to provide reasonable protection against harmful interference in a residential installation. This equipment generates uses and can radiate radio frequency energy and, if not installed and used in accordance with the instructions, may cause harmful interference to radio communications. However, there is no guarantee that interference will not occur in particular installation. If this equipment does cause harmful interference to radio or television reception, which can be determined by turning the equipment off and on, the user is encouraged to try to correct the interference by one or more of the following measures:

- Reorient or relocate the receiving antenna.
- Increase the separation between the equipment and receiver.
- Connect the equipment into an outlet on a circuit different from that to which the receiver is connected.
- Consult the dealer or an experienced radio/TV technician for help.

Changes or modifications not expressly approved by the party responsible for compliance could void the user's authority to operate the equipment.

FCC Radiation Exposure Statement

This device complies with FCC RF radiation exposure limits set forth for an uncontrolled environment. This transmitter must not be co-located or operating in conjunction with any other antenna or transmitter.