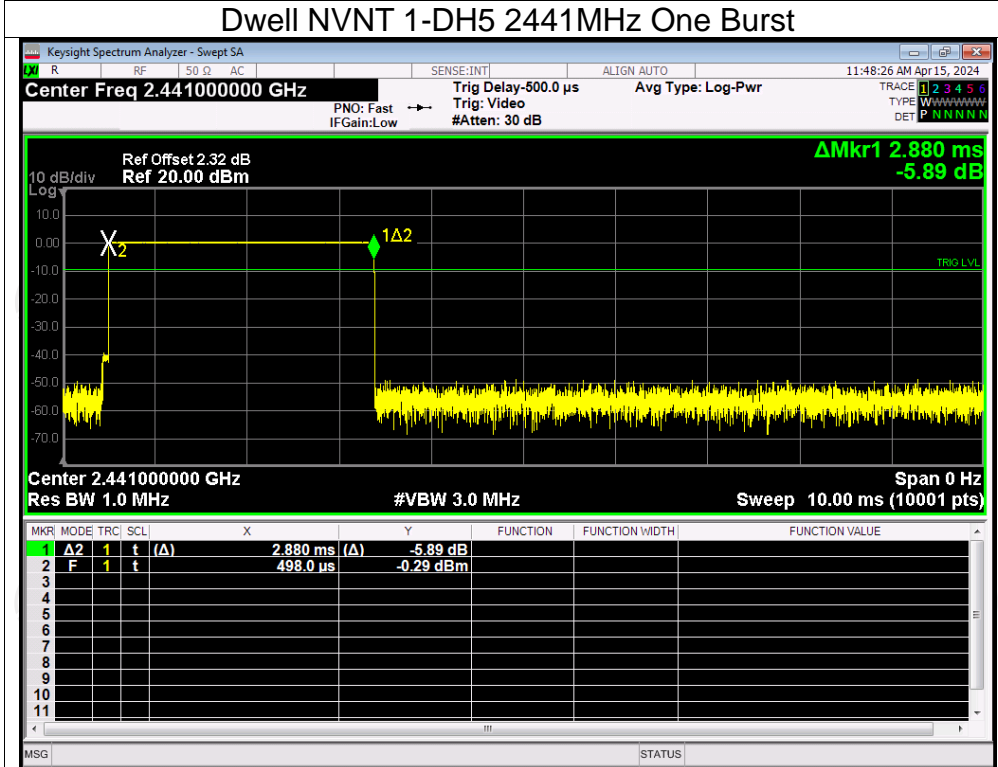
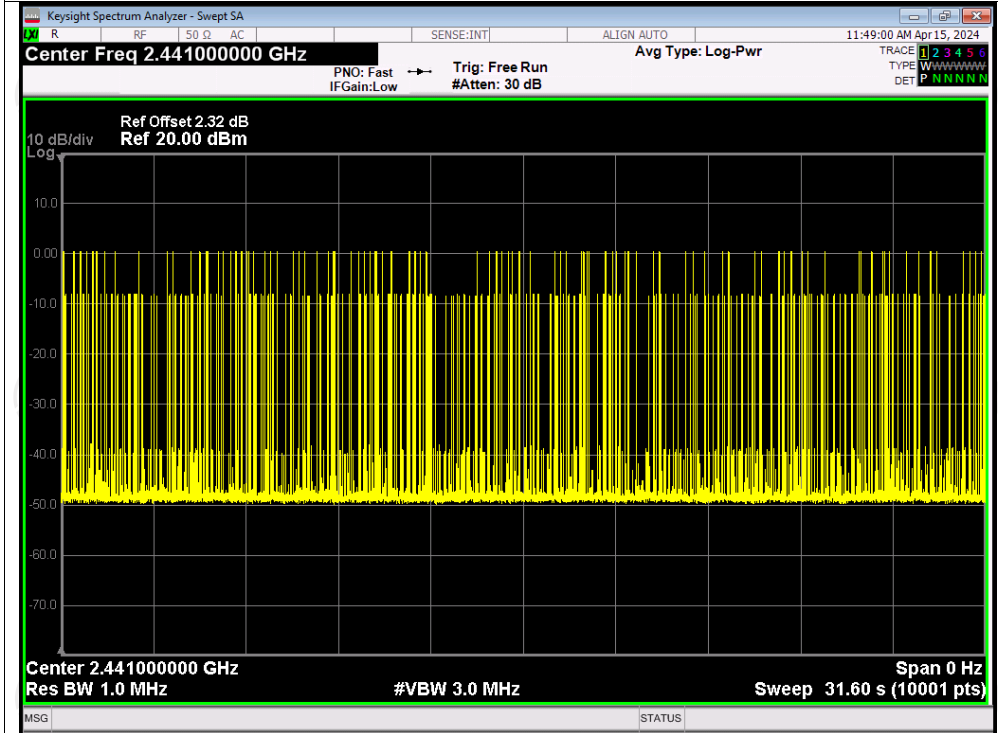


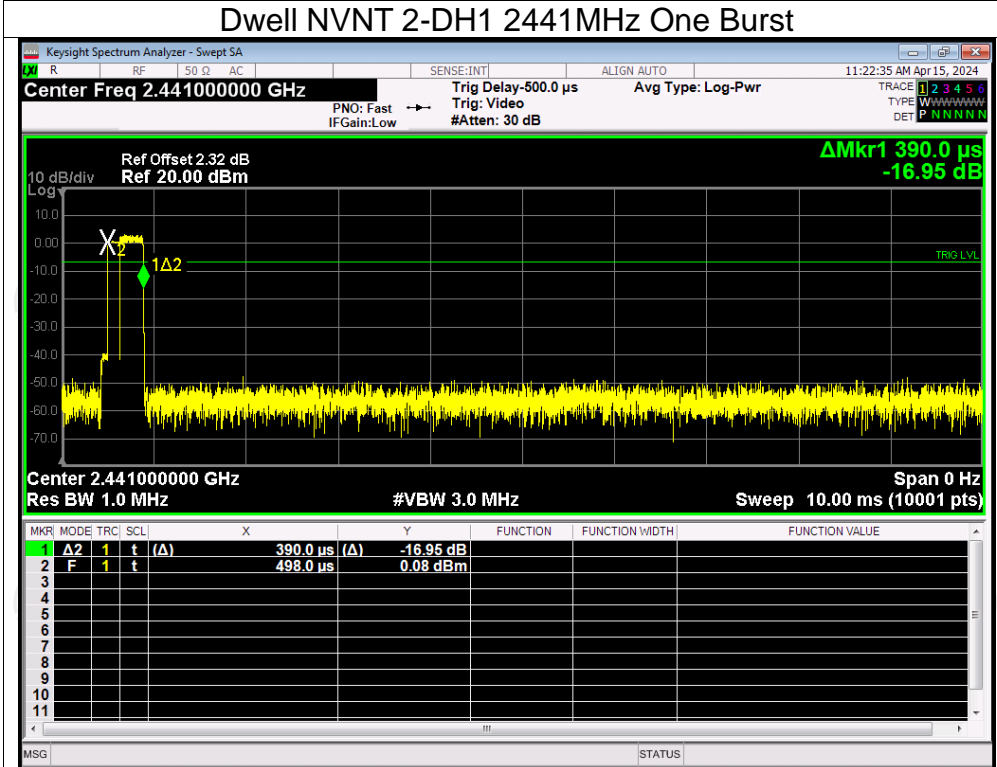
Dwell NVNT 1-DH5 2441MHz One Burst



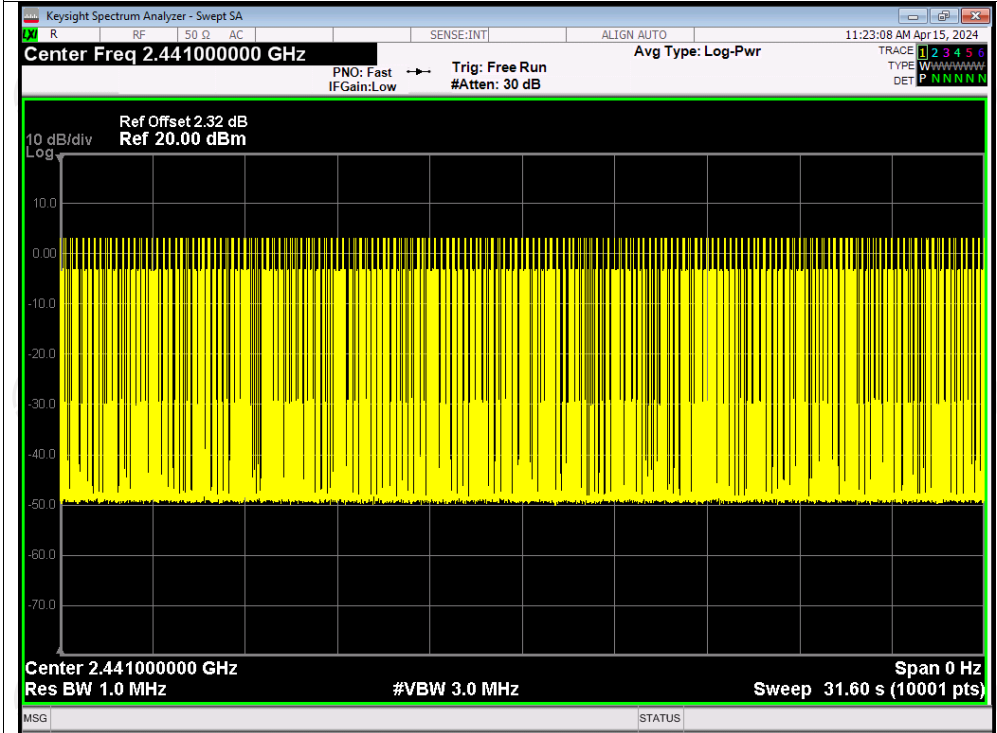
Dwell NVNT 1-DH5 2441MHz Accumulated



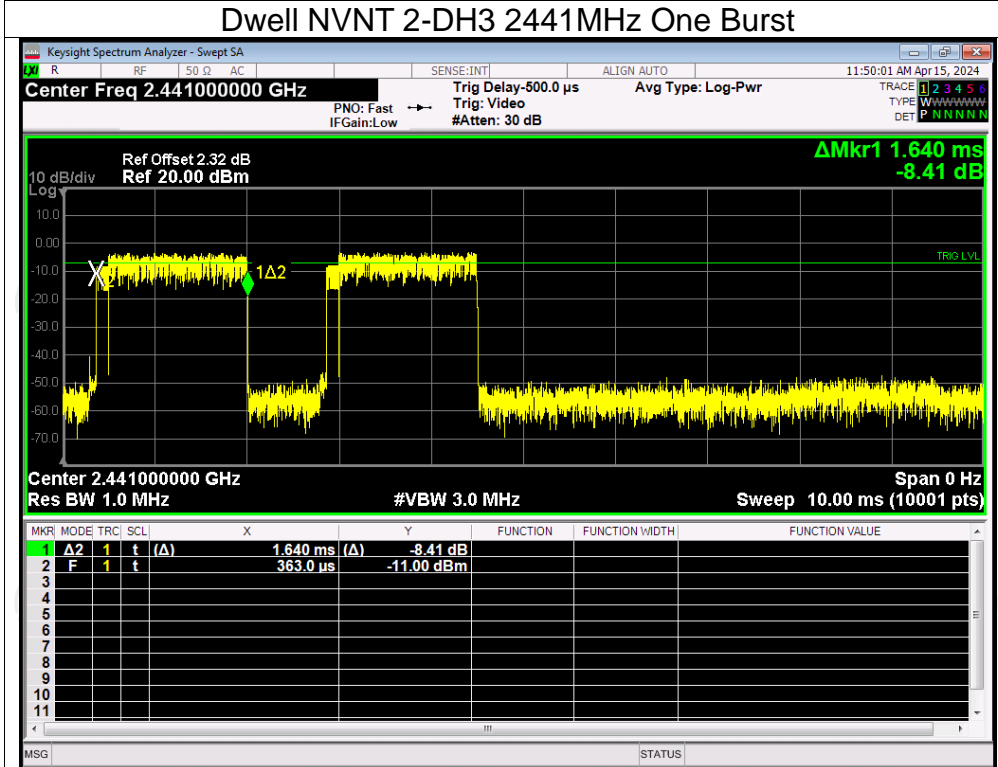
Dwell NVNT 2-DH1 2441MHz One Burst



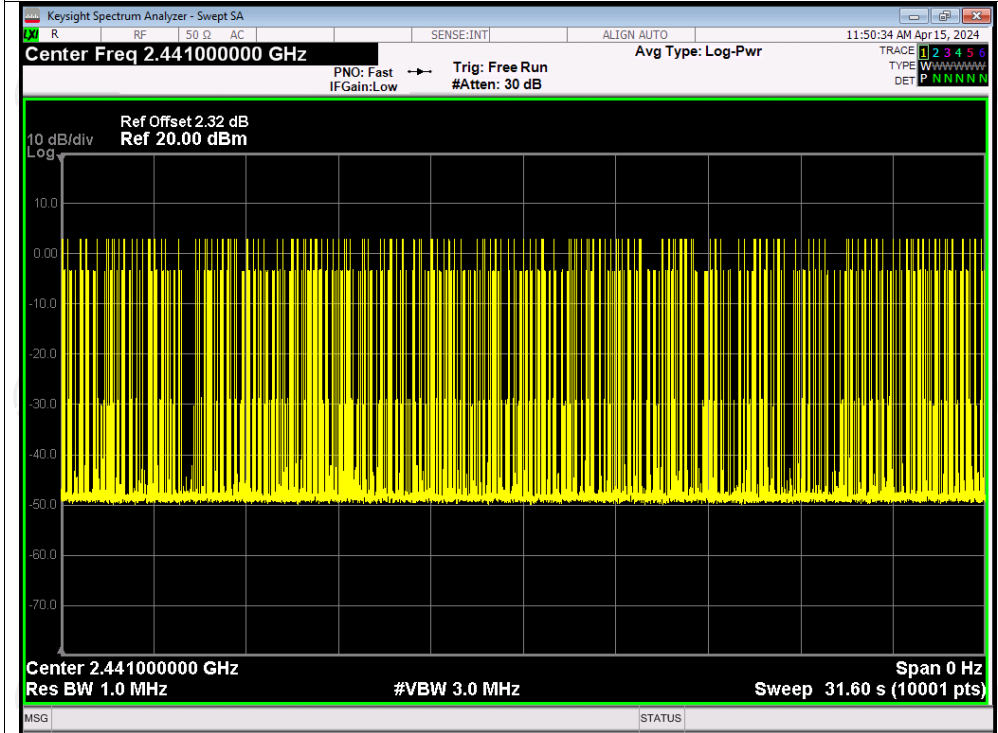
Dwell NVNT 2-DH1 2441MHz Accumulated



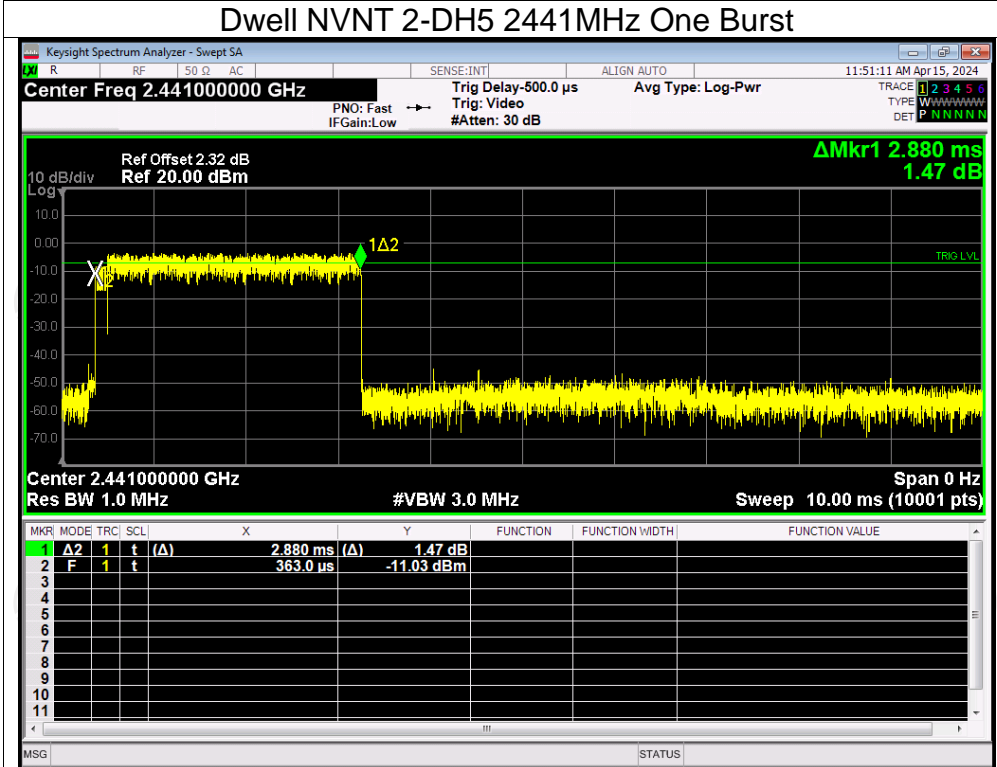
Dwell NVNT 2-DH3 2441MHz One Burst



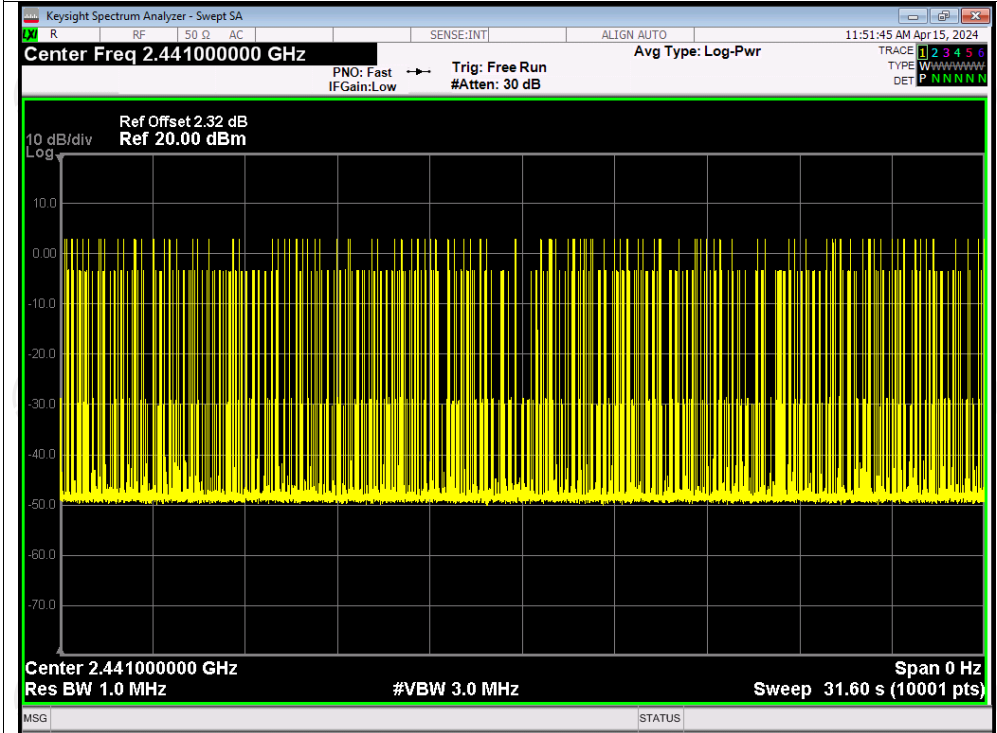
Dwell NVNT 2-DH3 2441MHz Accumulated



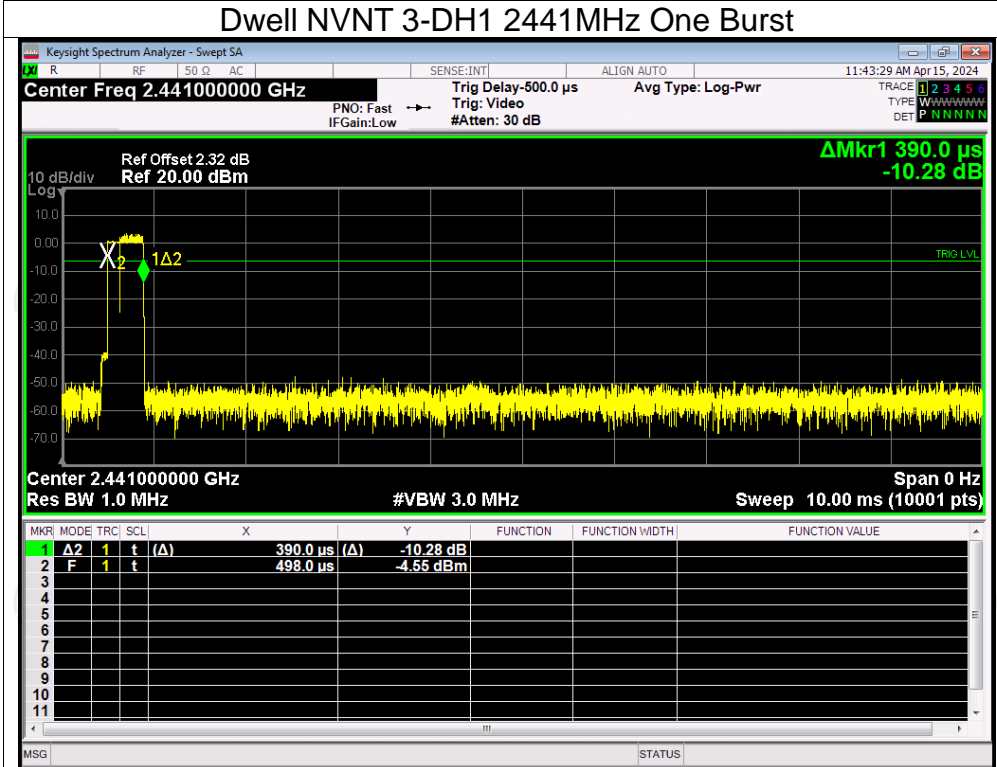
Dwell NVNT 2-DH5 2441MHz One Burst



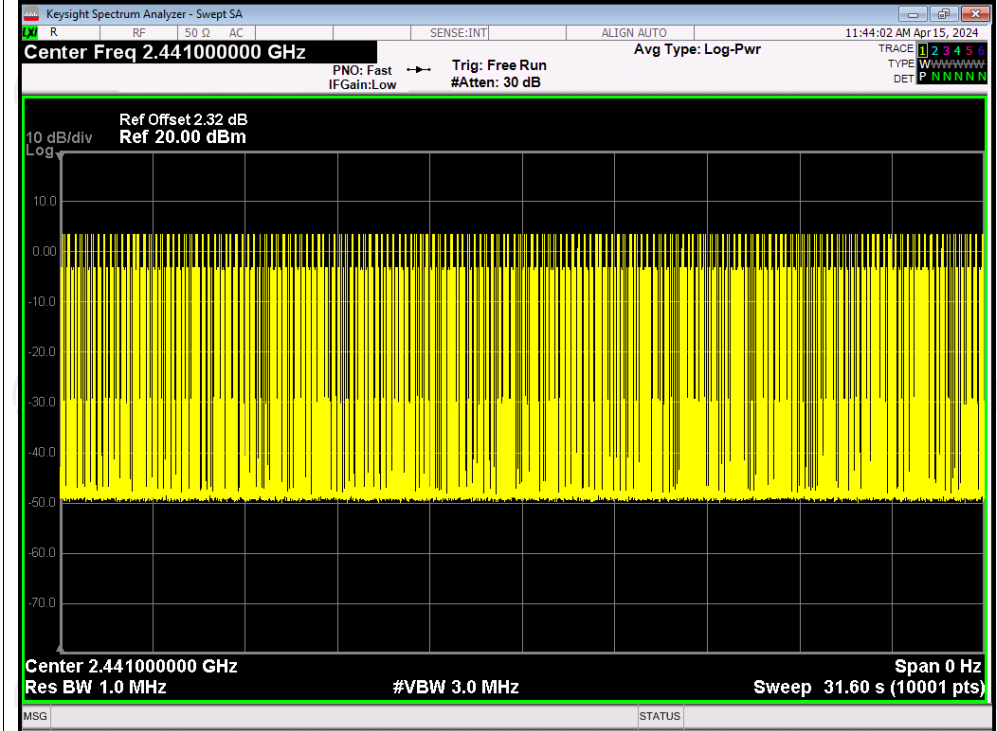
Dwell NVNT 2-DH5 2441MHz Accumulated



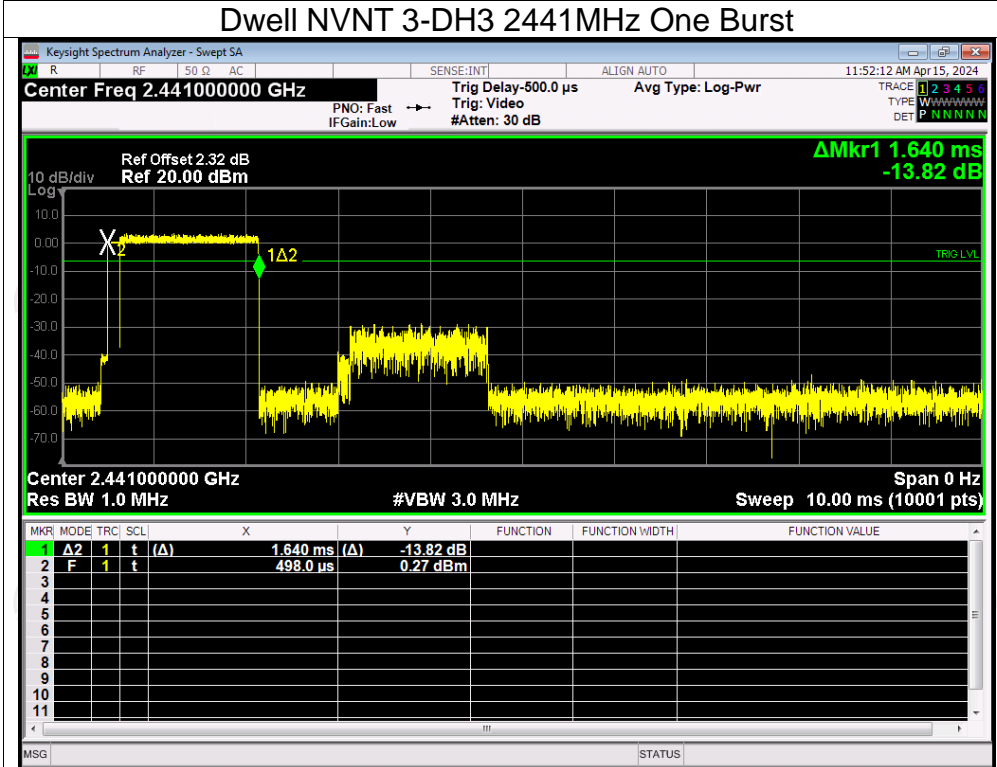
Dwell NVNT 3-DH1 2441MHz One Burst



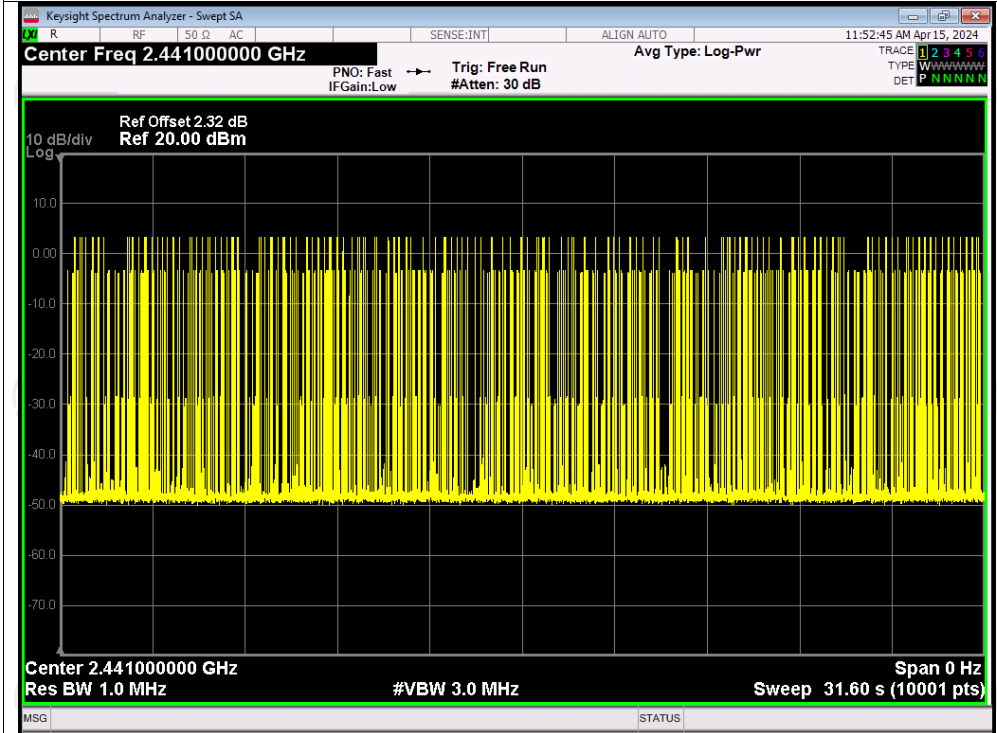
Dwell NVNT 3-DH1 2441MHz Accumulated



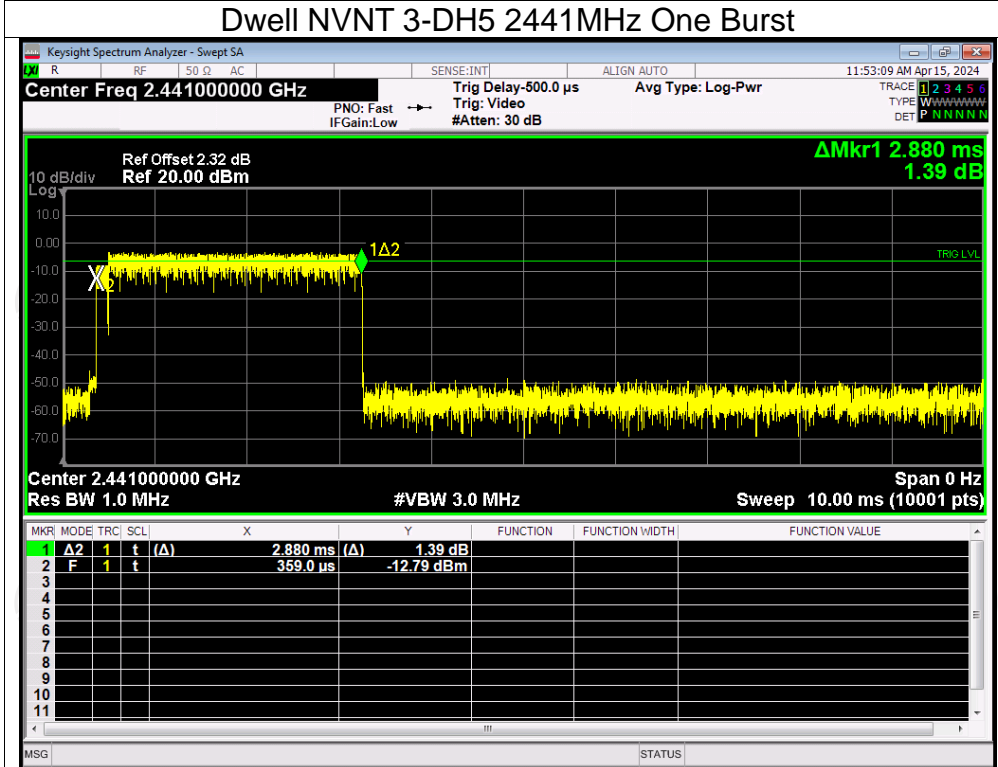
Dwell NVNT 3-DH3 2441MHz One Burst



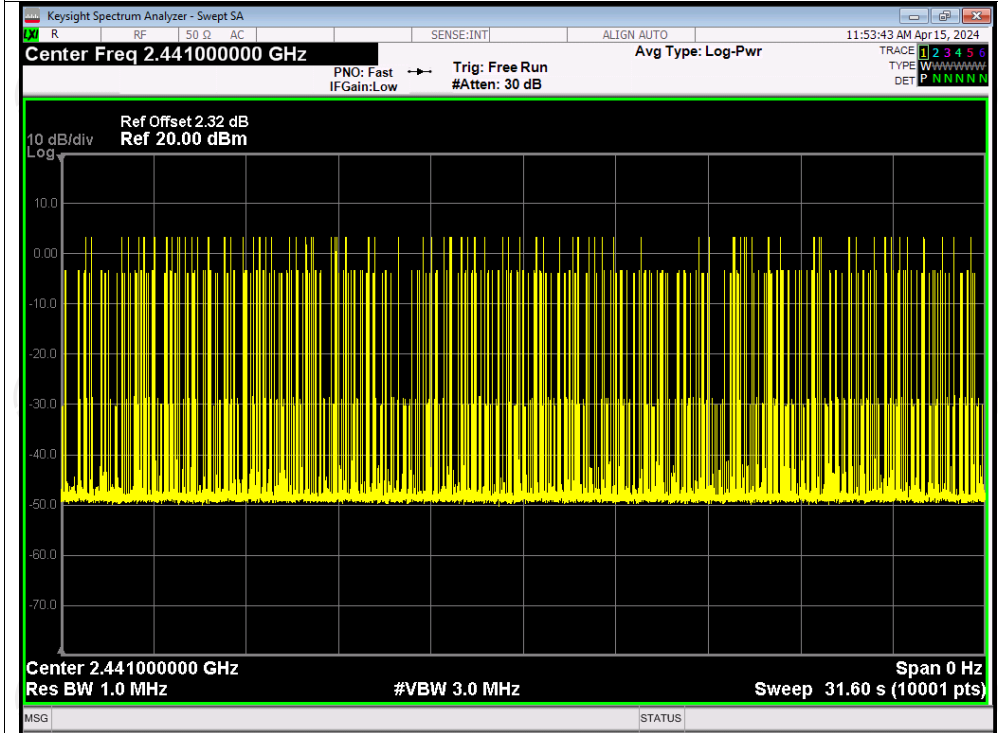
Dwell NVNT 3-DH3 2441MHz Accumulated



Dwell NVNT 3-DH5 2441MHz One Burst



Dwell NVNT 3-DH5 2441MHz Accumulated

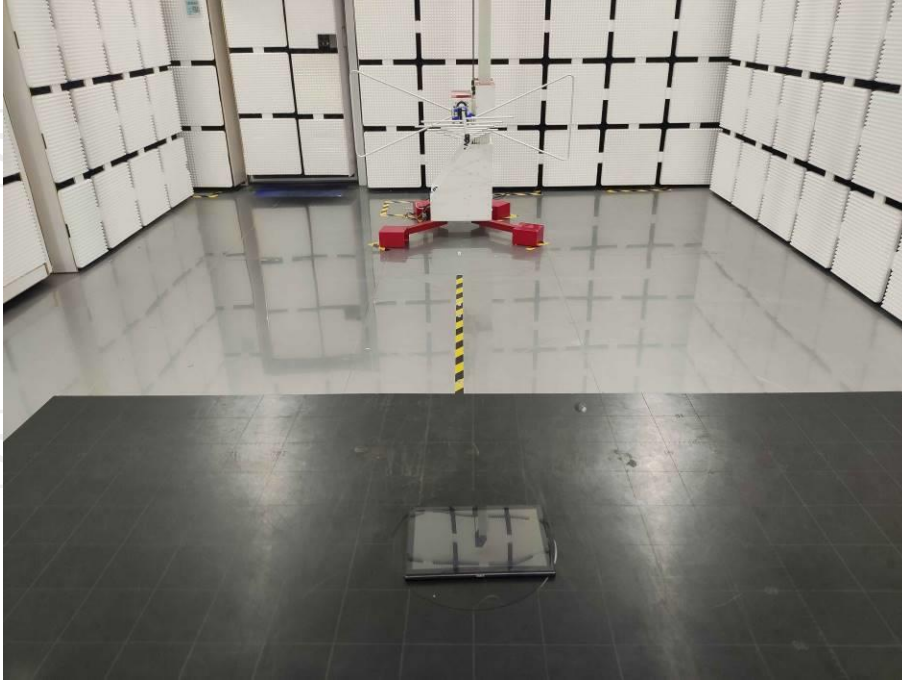


Appendix B: Photographs of Test Setup

Product: TABLET PC

Model: EID-1061

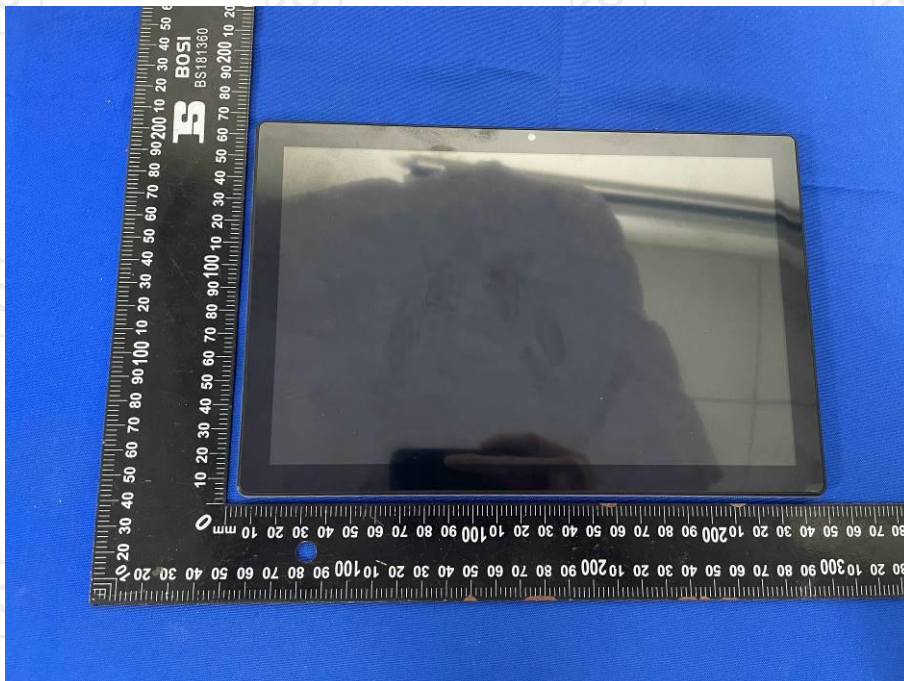
Radiated Emission

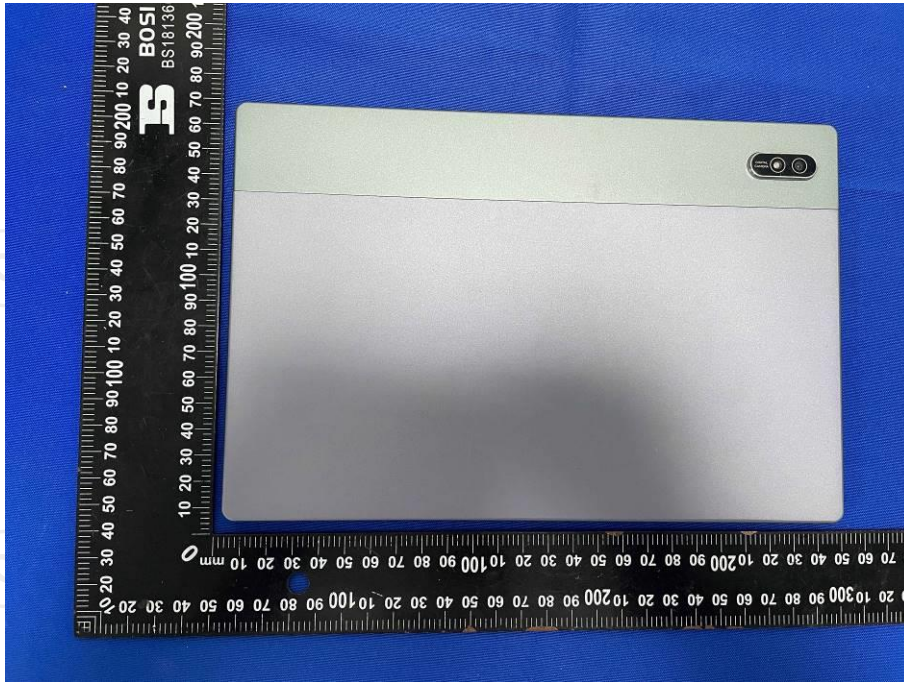


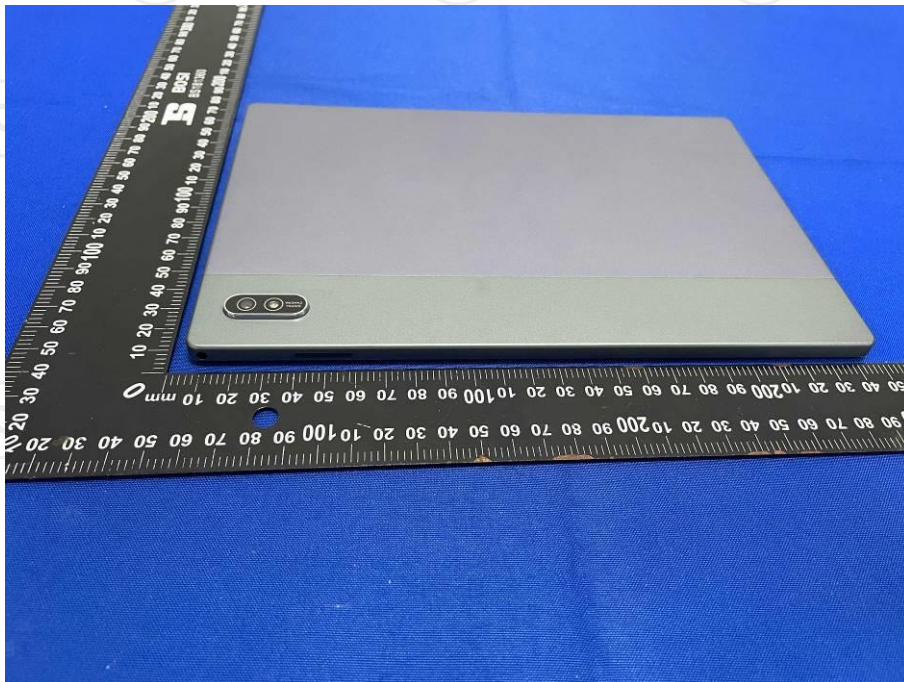
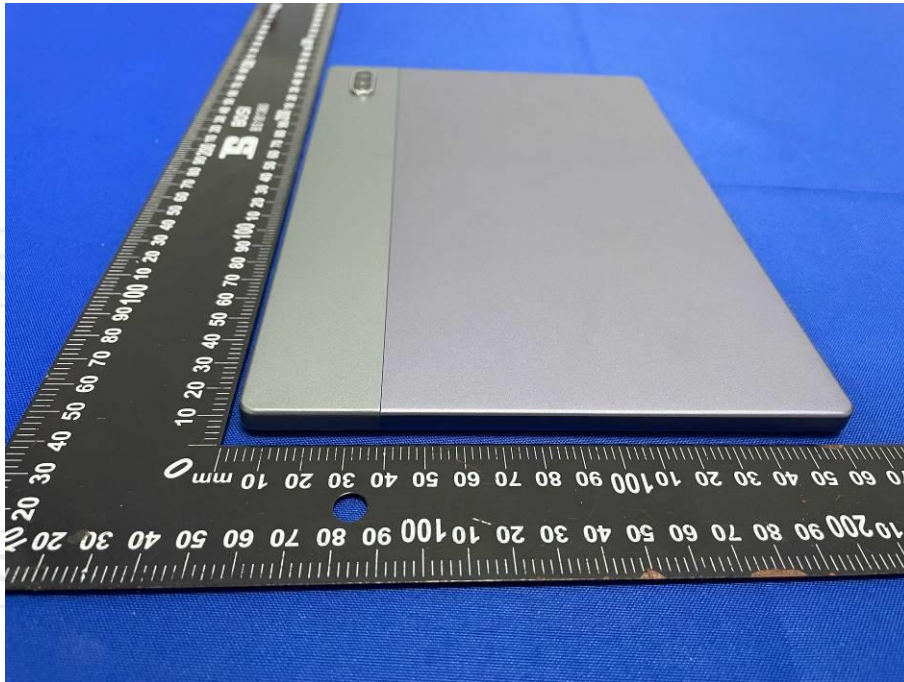
Conducted Emission

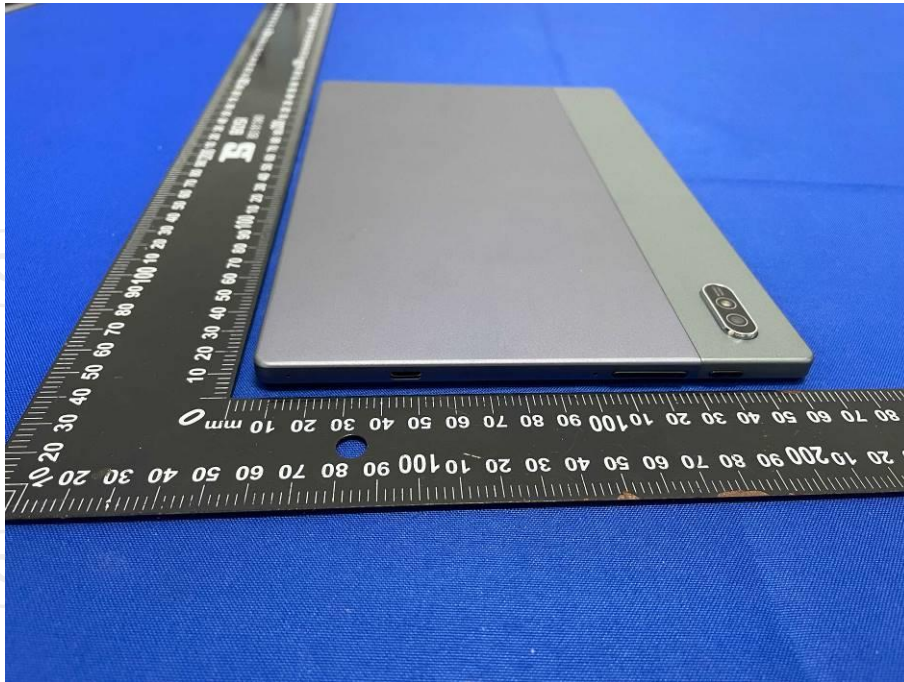


Appendix C: Photographs of EUT
Product: TABLET PC
Model: EID-1061
External Photos

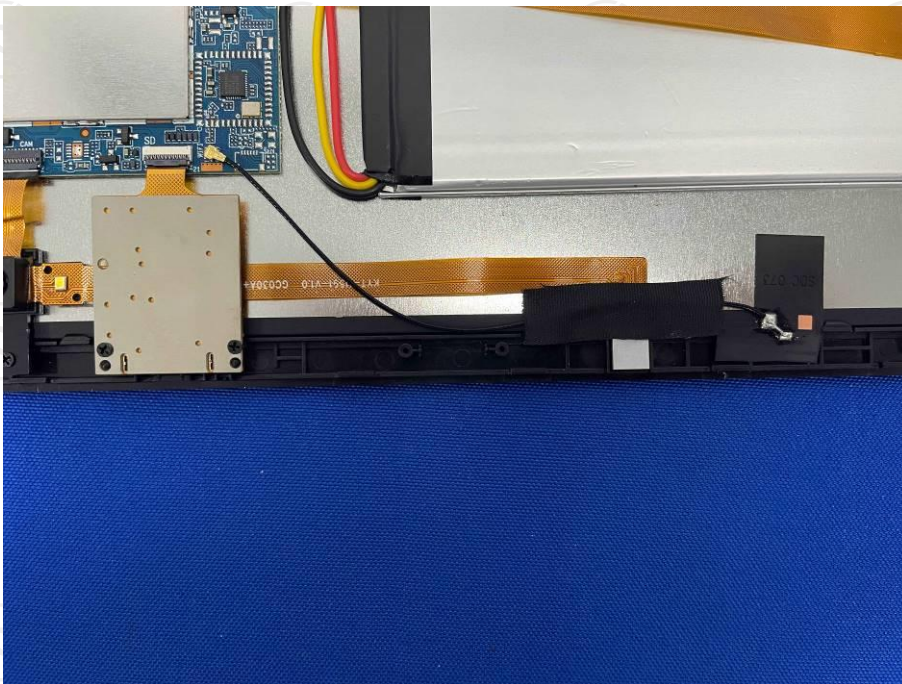
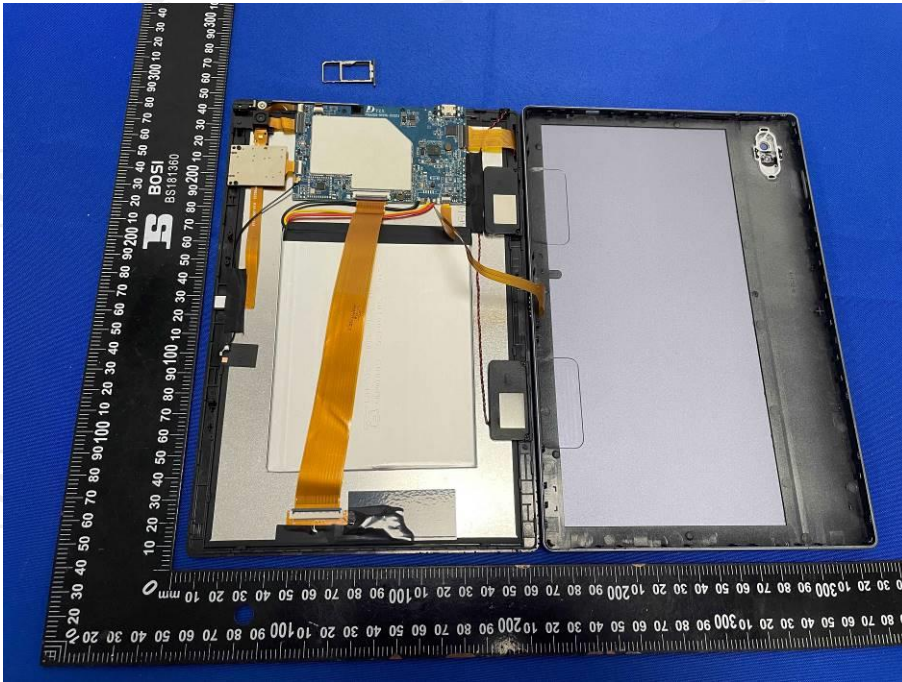


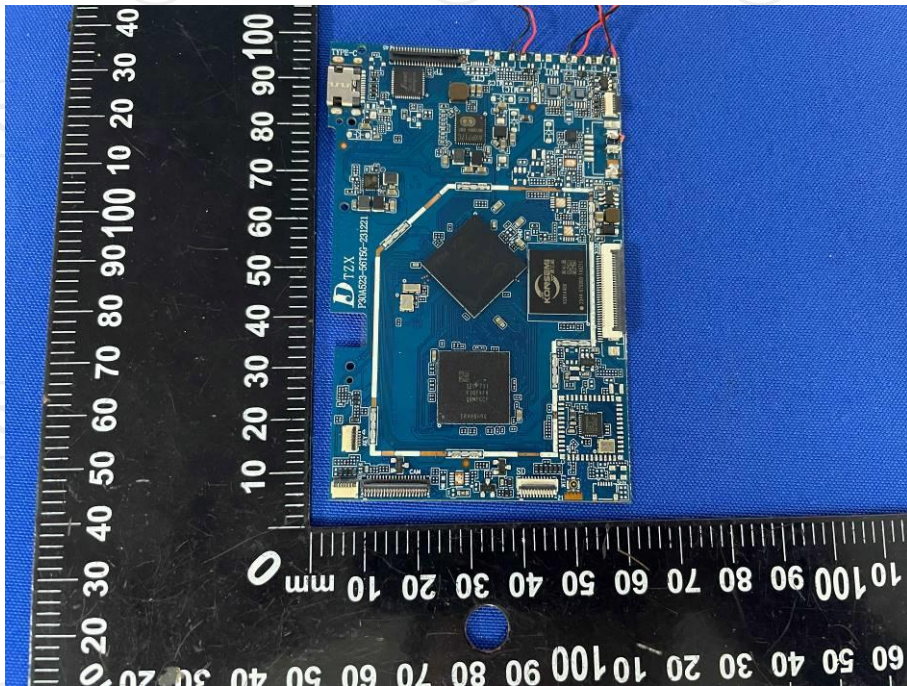
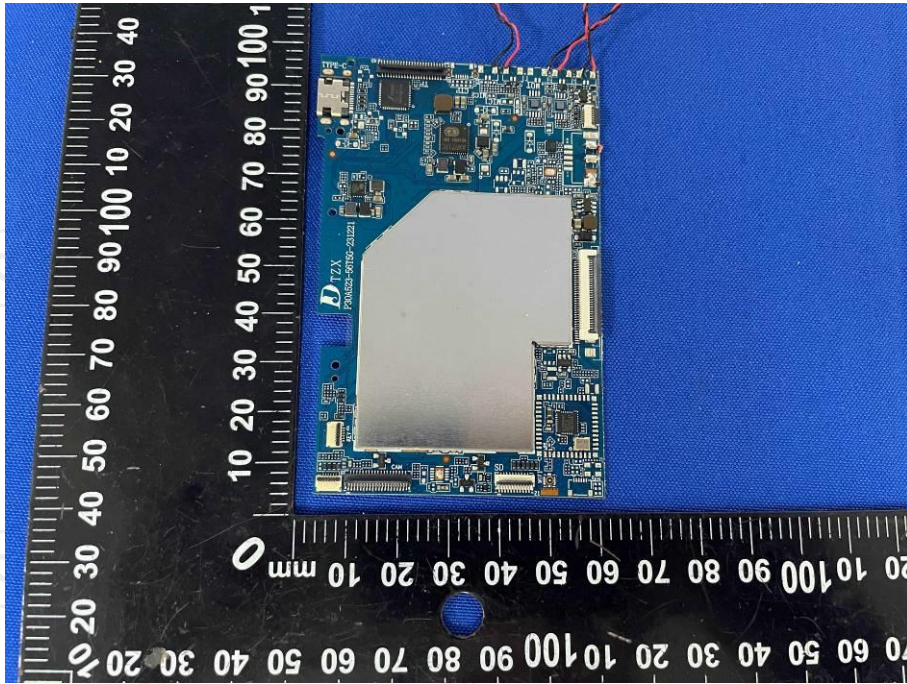


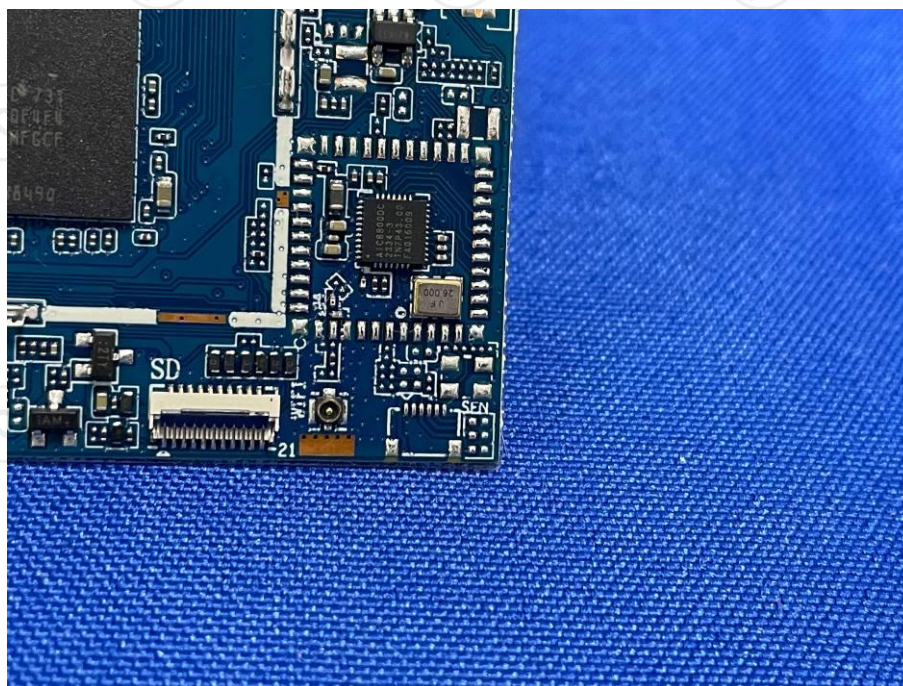
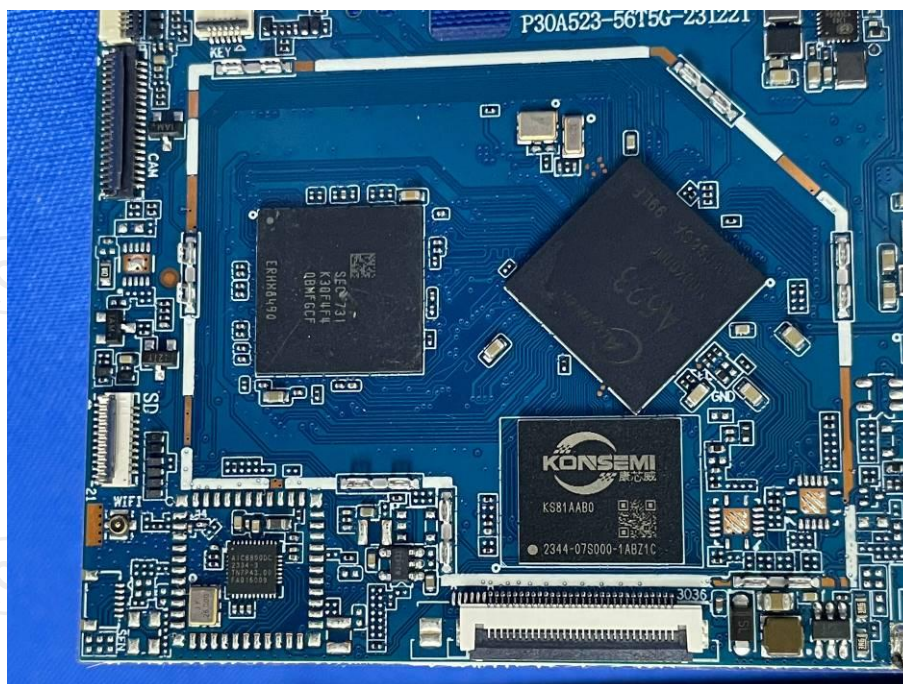


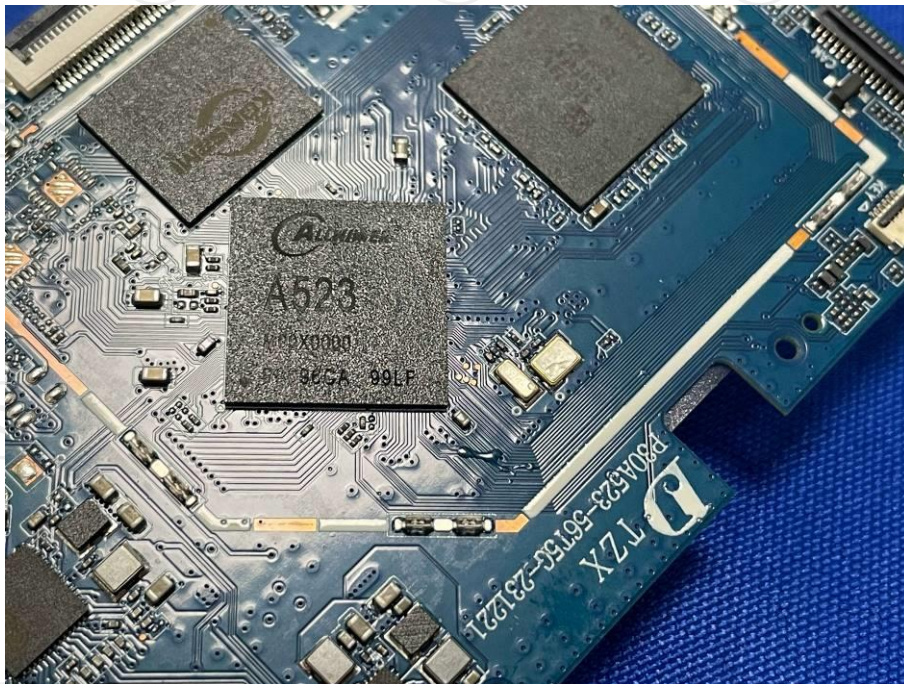
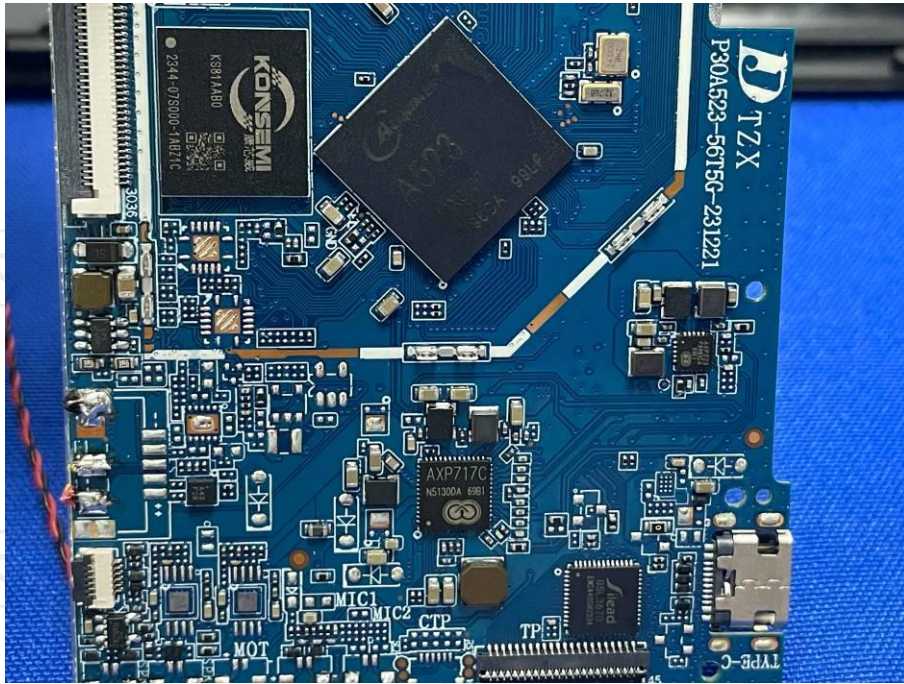


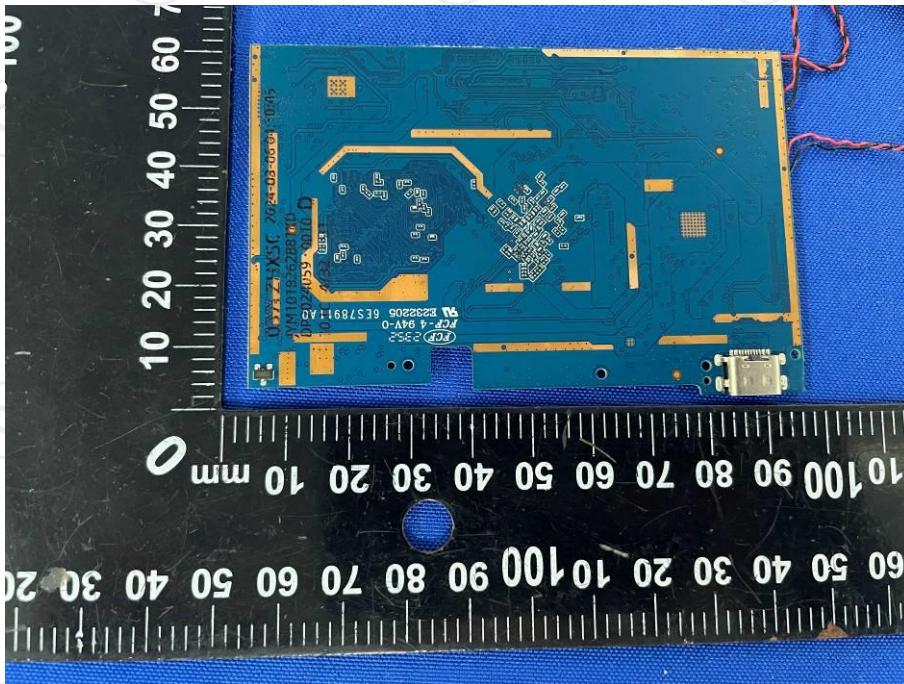
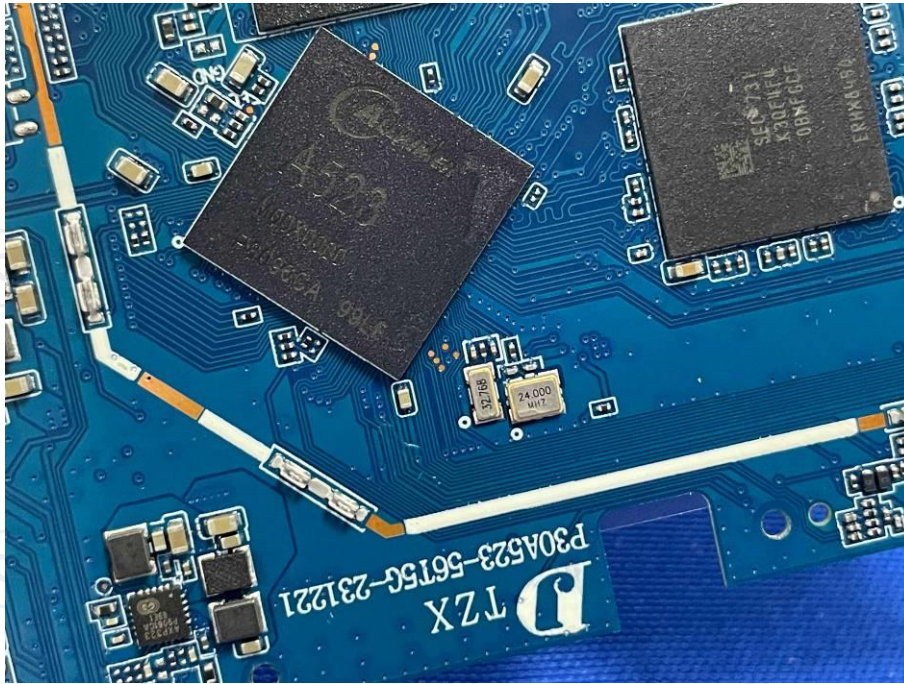
**Product: TABLET PC
Model: EID-1061
Internal Photos**

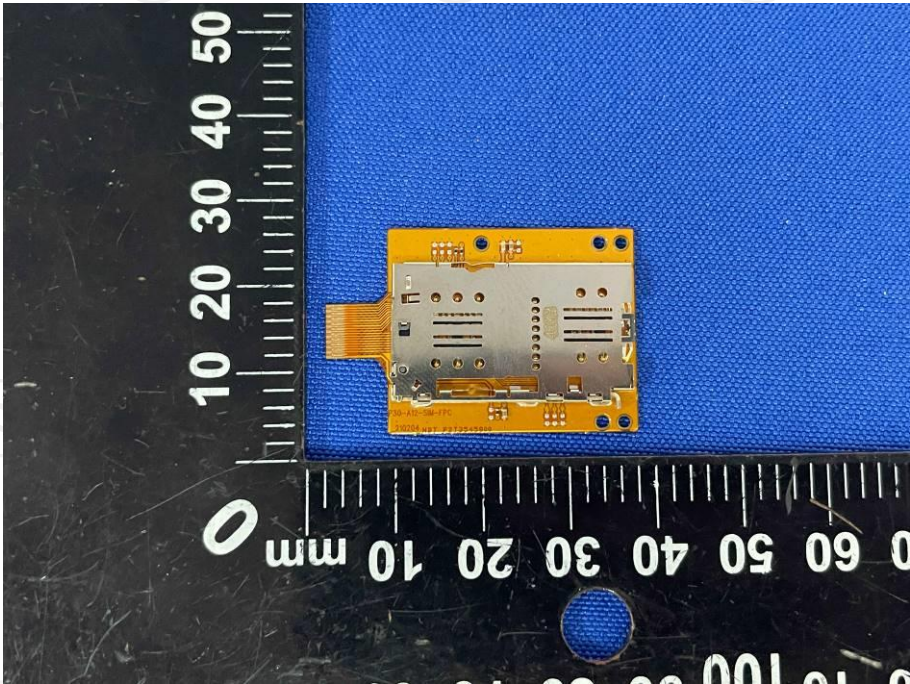
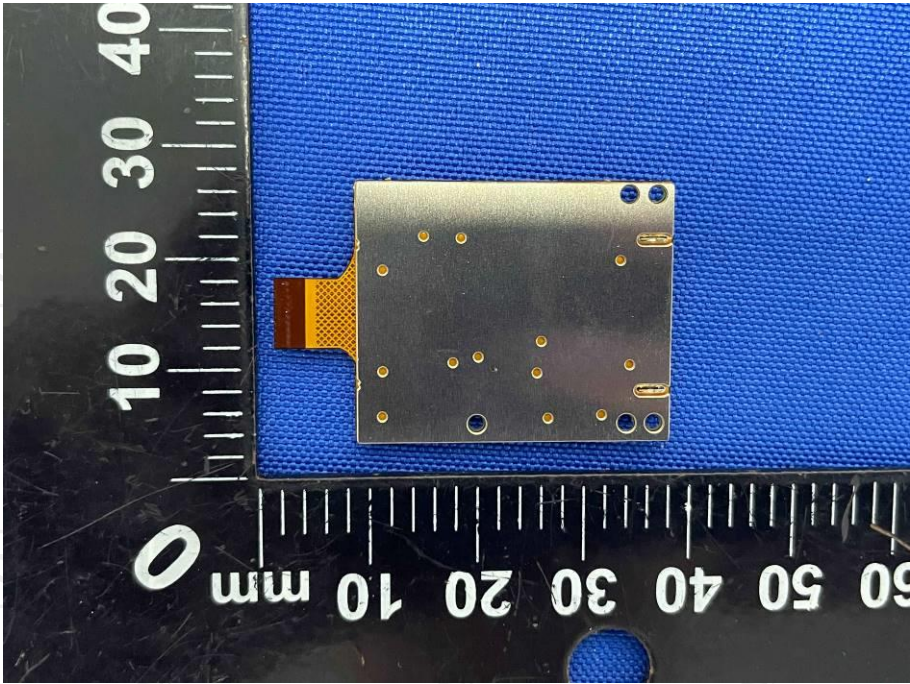


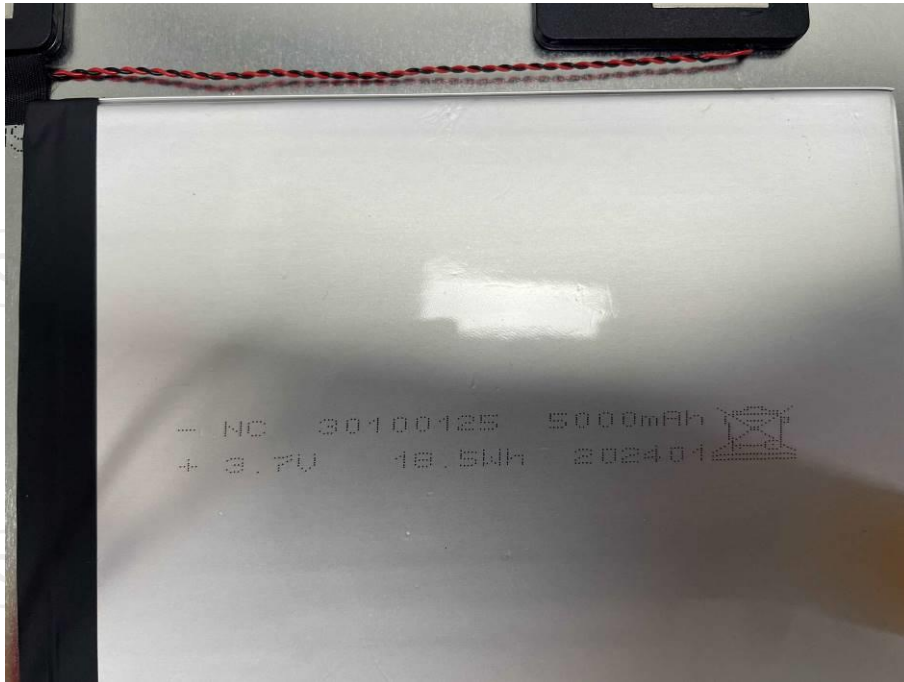












*******END OF REPORT*******