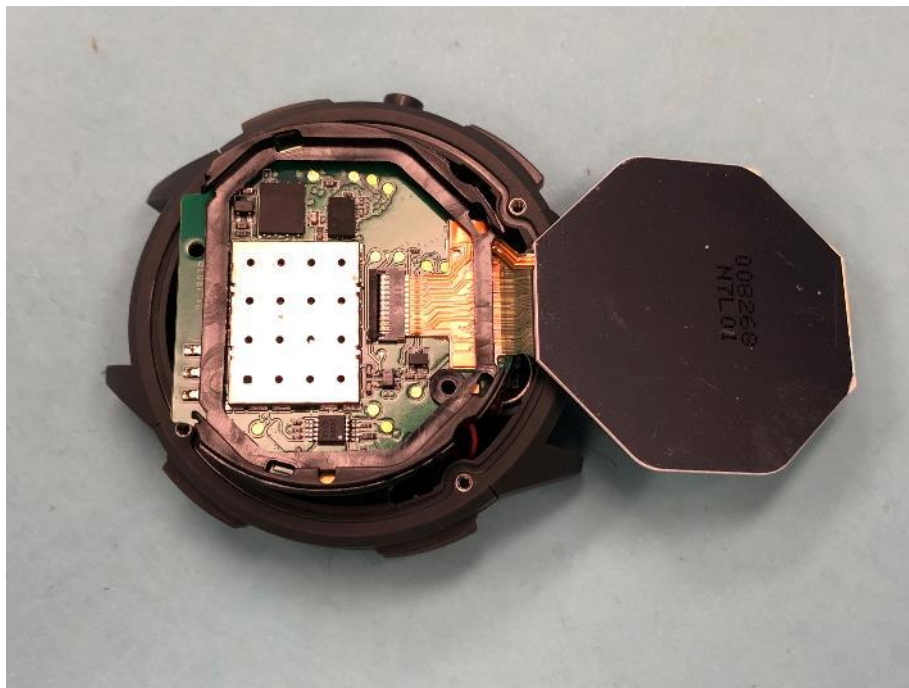


Appendix C

Date: 2018-12-11

Report Number: 60.790.18.050.01

Model No.: 75004PP03 FCC ID: 2AK9F-7500

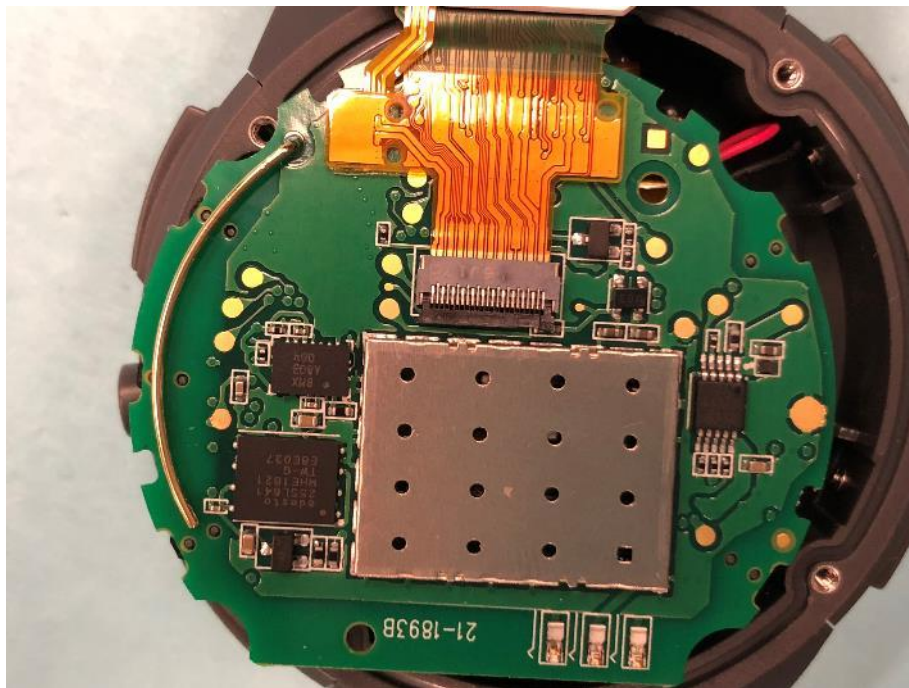
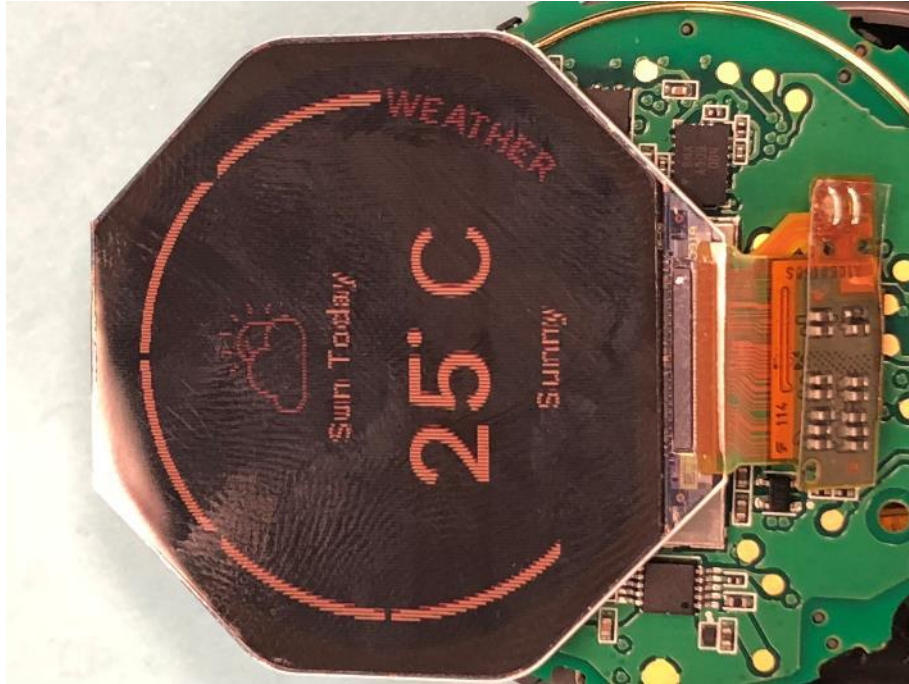


Appendix C

Date: 2018-12-11

Report Number: 60.790.18.050.01

Model No.: 75004PP03 FCC ID: 2AK9F-7500



Appendix C

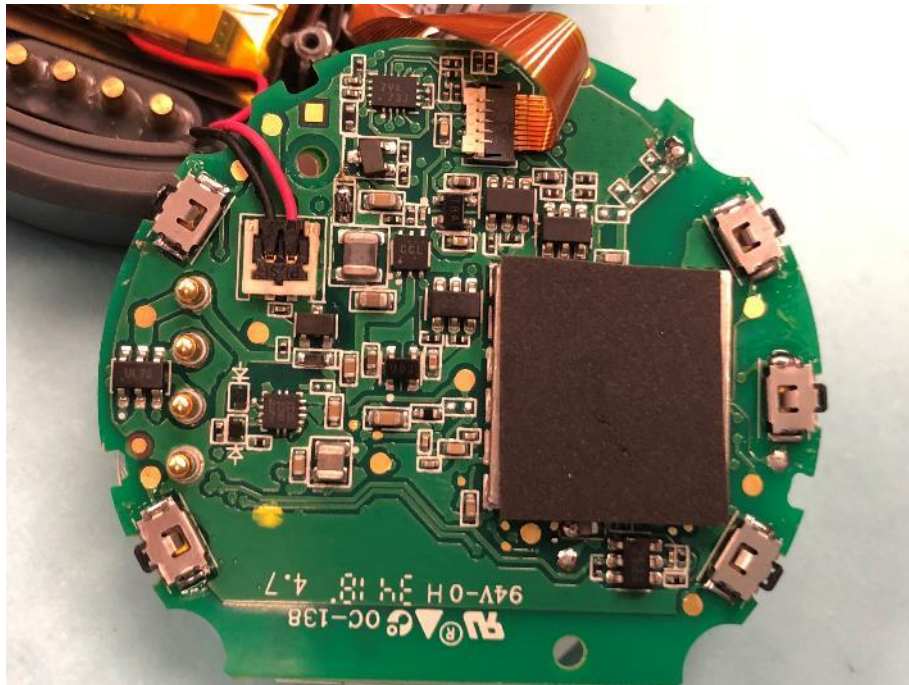
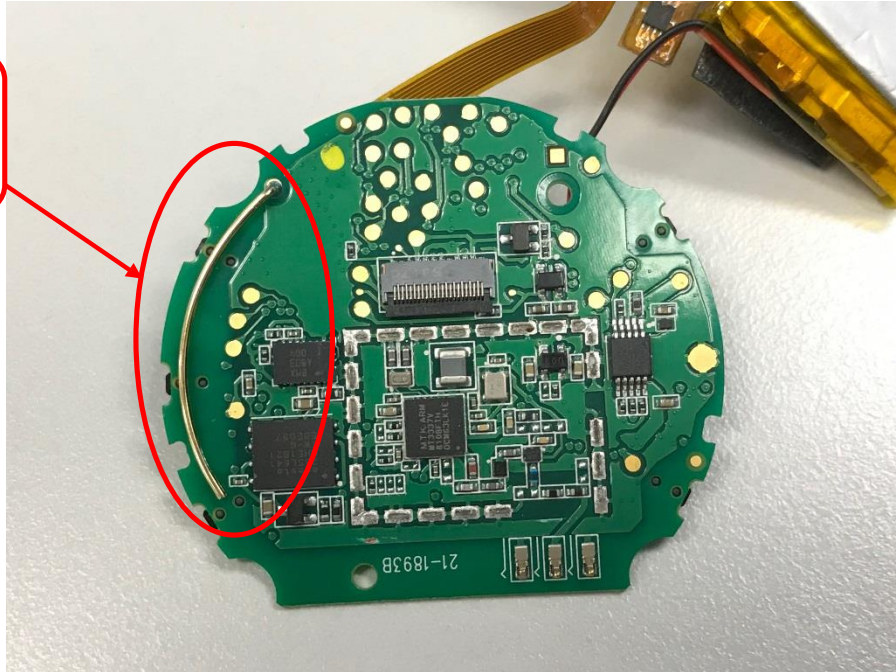
Date: 2018-12-11

Report Number: 60.790.18.050.01

Model No.: 75004PP03 FCC ID: 2AK9F-7500

BLE and ANT+ Antenna

2402-2480MHz

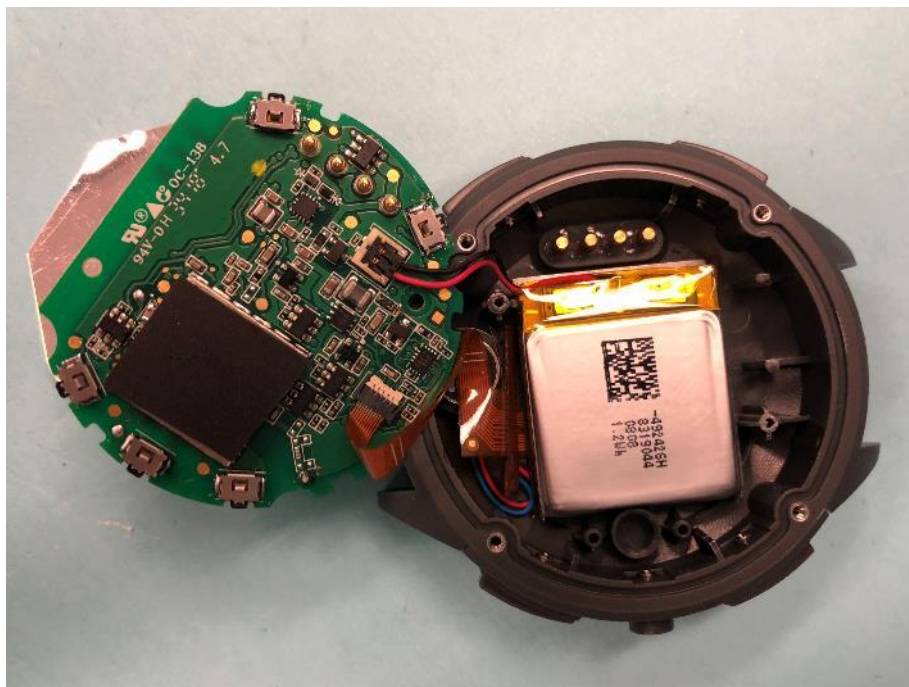
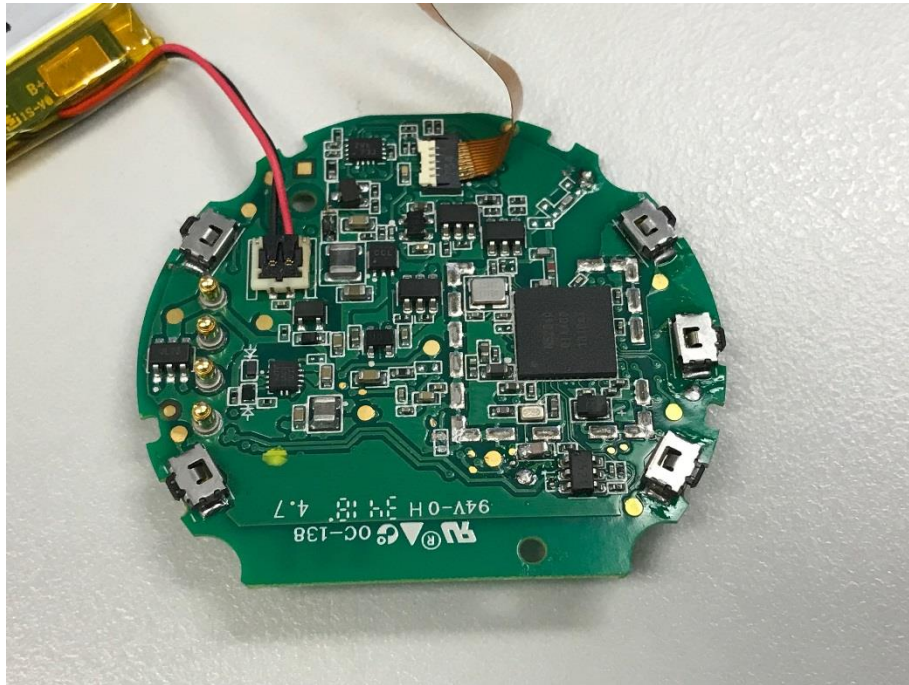


Appendix C

Date: 2018-12-11

Report Number: 60.790.18.050.01

Model No.: 75004PP03 FCC ID: 2AK9F-7500

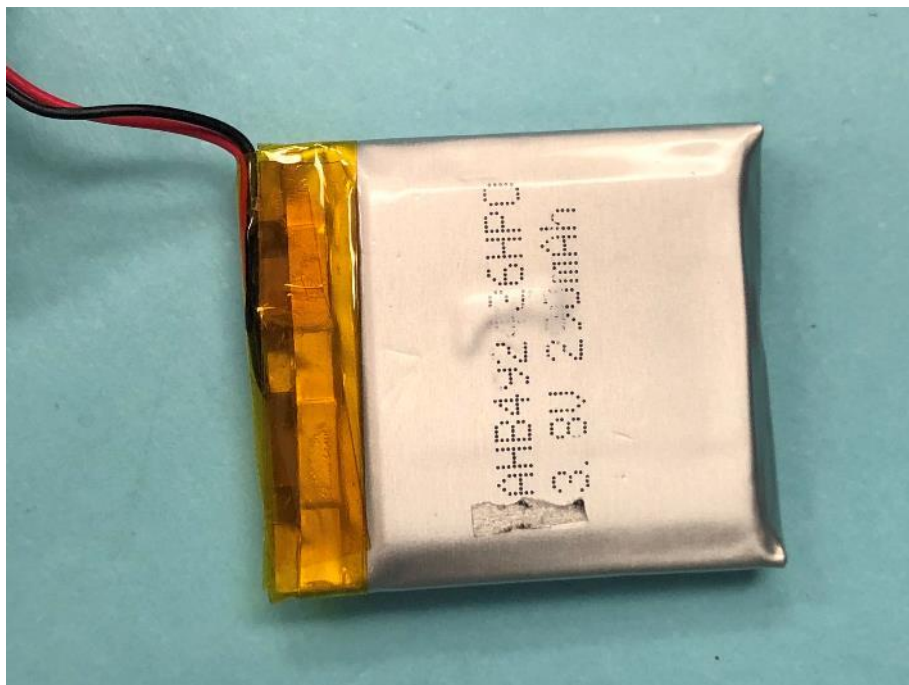
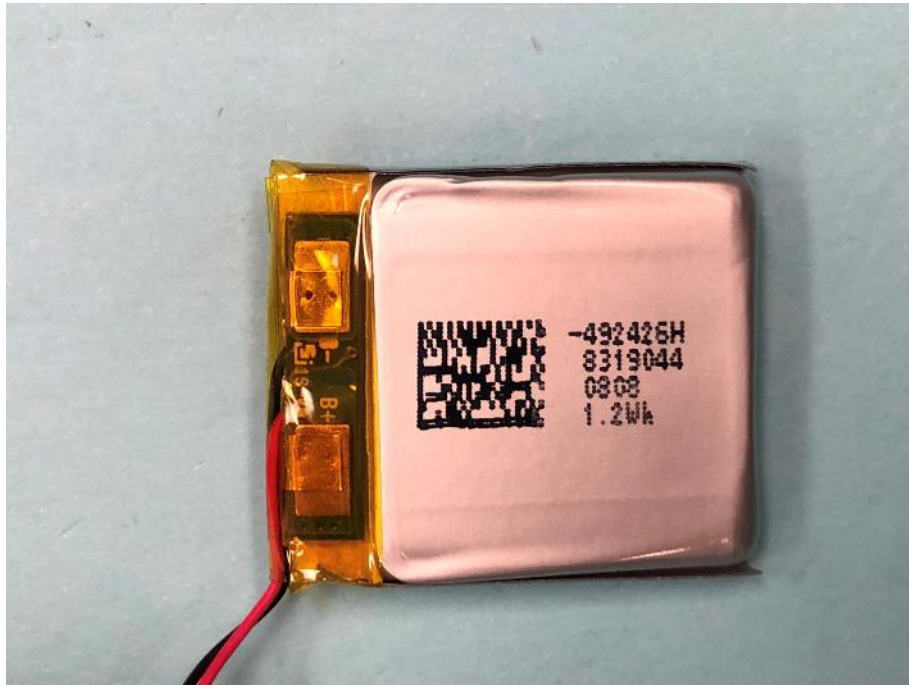


Appendix C

Date: 2018-12-11

Report Number: 60.790.18.050.01

Model No.: 75004PP03 FCC ID: 2AK9F-7500

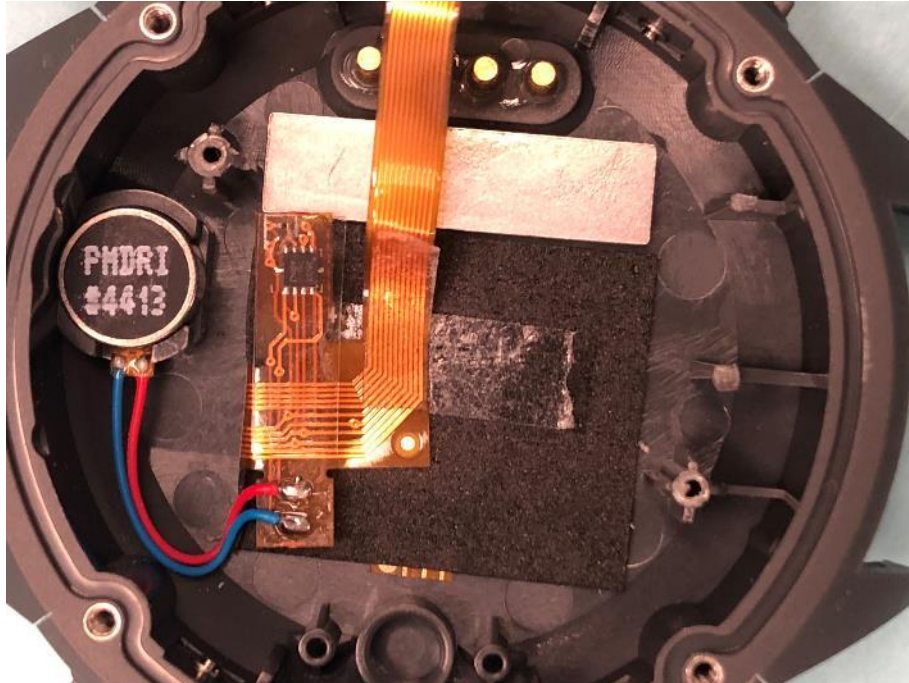


Appendix C

Date: 2018-12-11

Report Number: 60.790.18.050.01

Model No.: 75004PP03 FCC ID: 2AK9F-7500

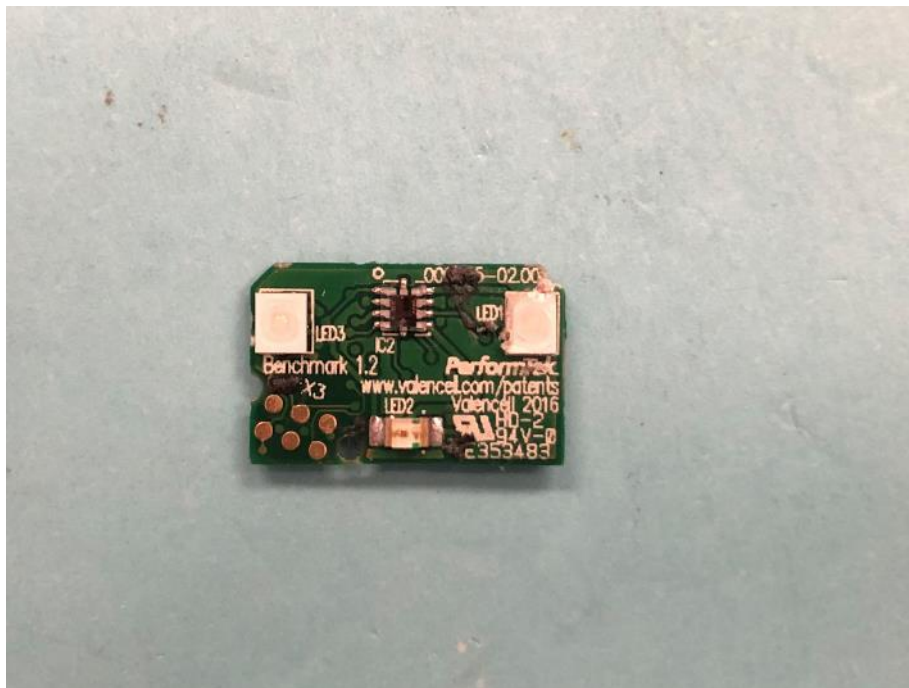
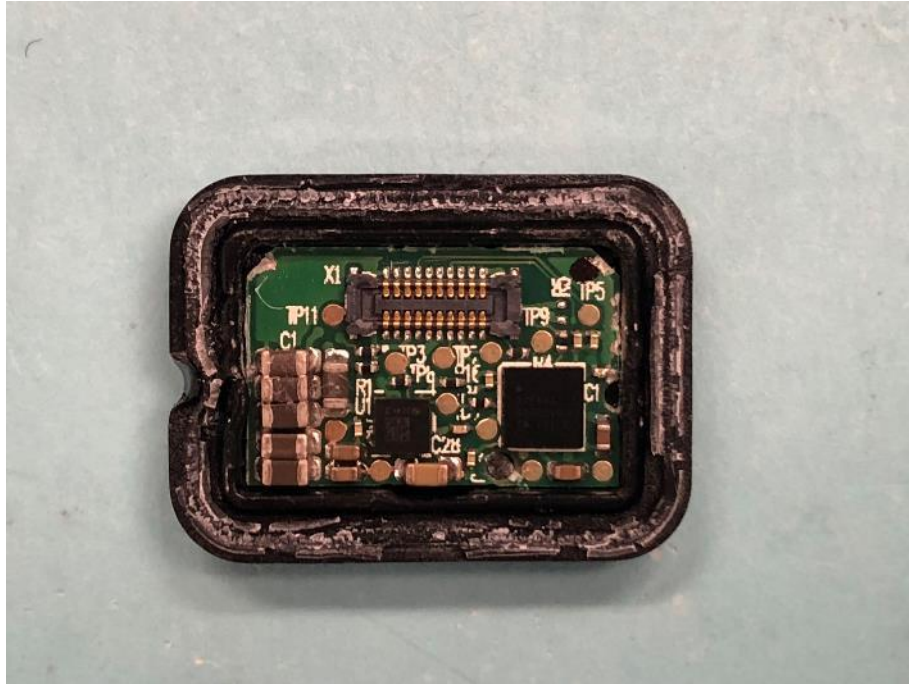


Appendix C

Date: 2018-12-11

Report Number: 60.790.18.050.01

Model No.: 75004PP03 FCC ID: 2AK9F-7500

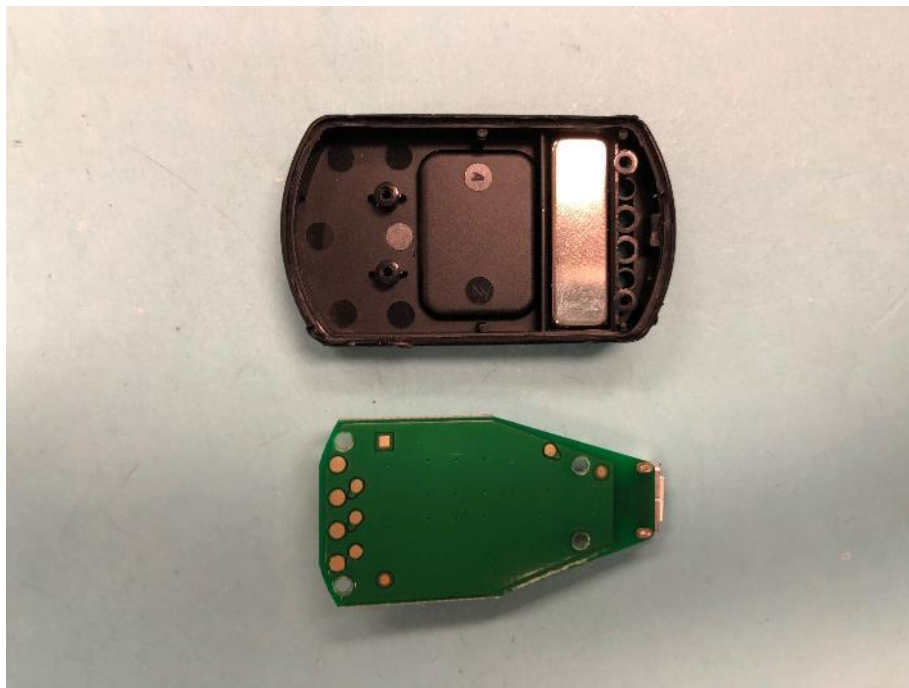
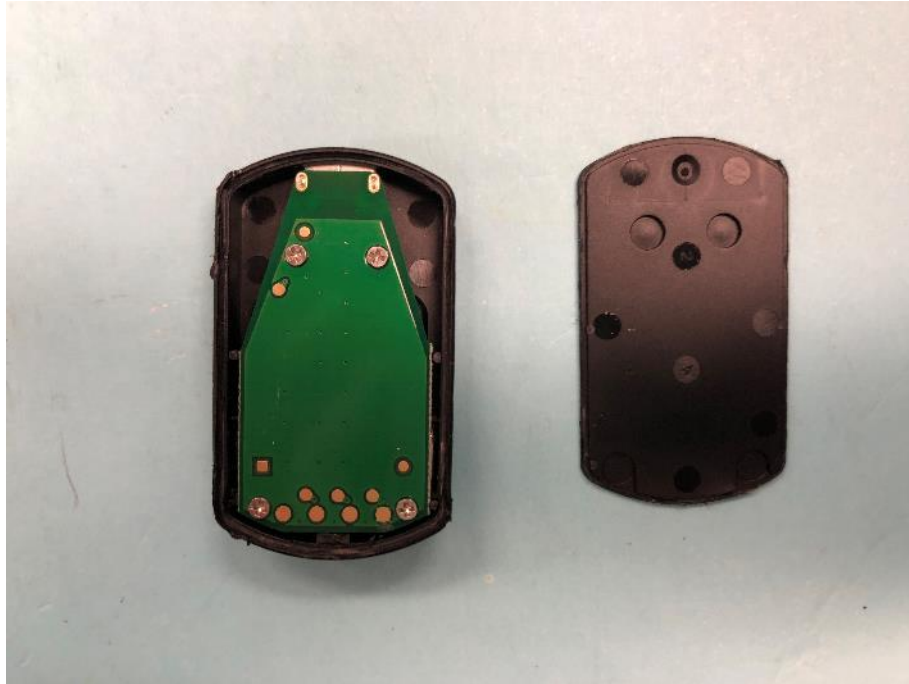


Appendix C

Date: 2018-12-11

Report Number: 60.790.18.050.01

Model No.: 75004PP03 FCC ID: 2AK9F-7500



Appendix C

Date: 2018-12-11

Report Number: 60.790.18.050.01

Model No.: 75004PP03 FCC ID: 2AK9F-7500

