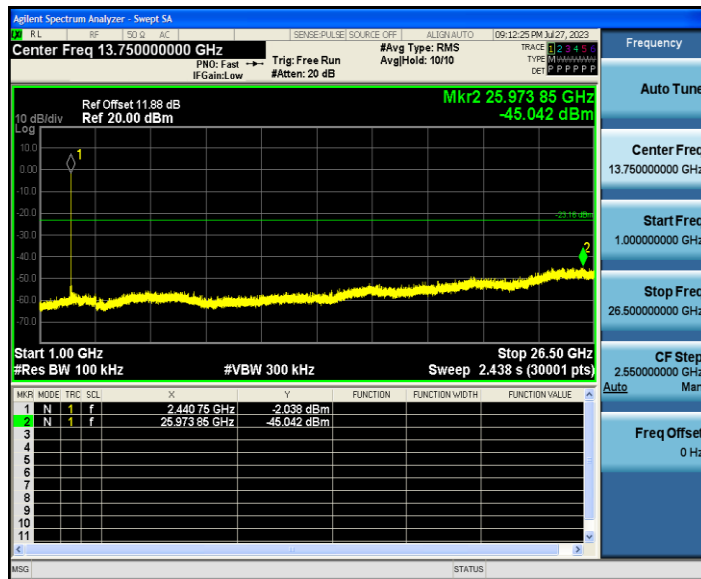


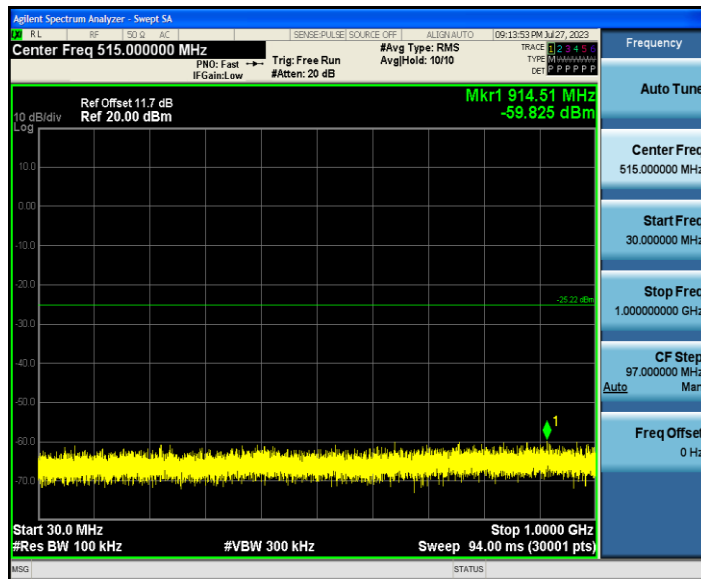
3DH5_Ant1_2441_1000~26500



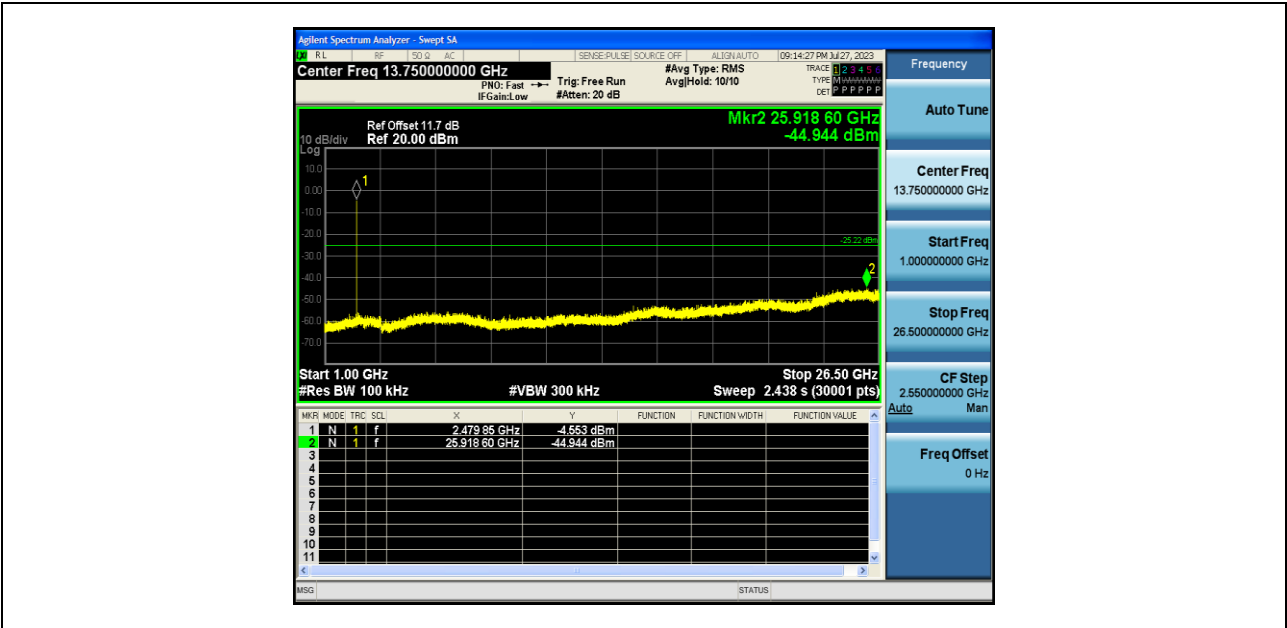
3DH5_Ant1_2480_0~Reference



3DH5_Ant1_2480_30~1000



3DH5_Ant1_2480_1000~26500





14 Antenna Requirement

14.1 Test Standard and Requirement

| | |
|---------------|---|
| Test Standard | FCC Part15 Section 15.203 /247(c) |
| Requirement | <p>1) 15.203 requirement:</p> <p>An intentional radiator shall be designed to ensure that no antenna other than that furnished by the responsible party shall be used with the device. The use of a permanently attached antenna or of an antenna that uses a unique coupling to the intentional radiator, the manufacturer may design the unit so that a broken antenna can be replaced by the user, but the use of a standard antenna jack or electrical connector is prohibited.</p> <p>2) 15.247(c) (1)(i) requirement:</p> <p>Systems operating in the 2400-2483.5 MHz band that is used exclusively for fixed. Point-to-point operations may employ transmitting antennas with directional gain greater than 6dBi provided the maximum conducted output power of the intentional radiator is reduced by 1 dB for every 3 dB that the directional gain of the antenna exceeds 6 dBi.</p> |

14.2 Antenna Connected Construction

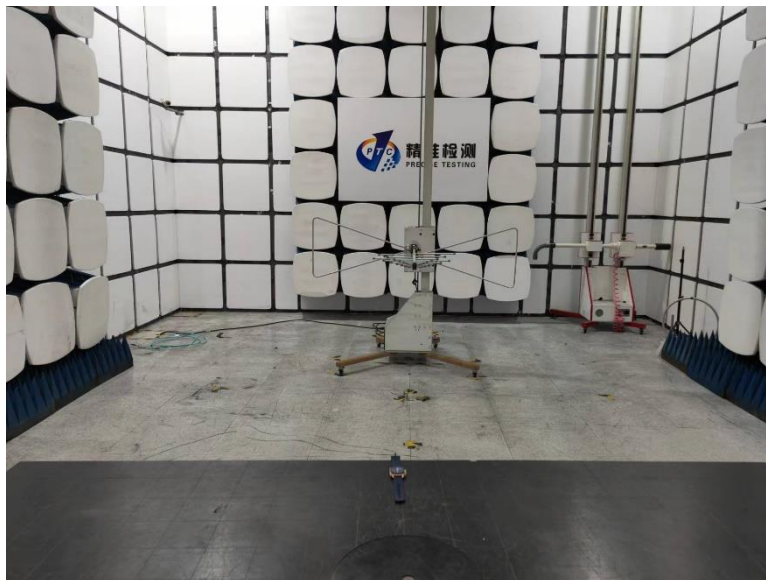
The antenna is Chip Antenna which permanently attached, and the best case gain of the antenna is 1.9dBi. It complies with the standard requirement.

15 APPENDIX I -- TEST SETUP PHOTOGRAPH

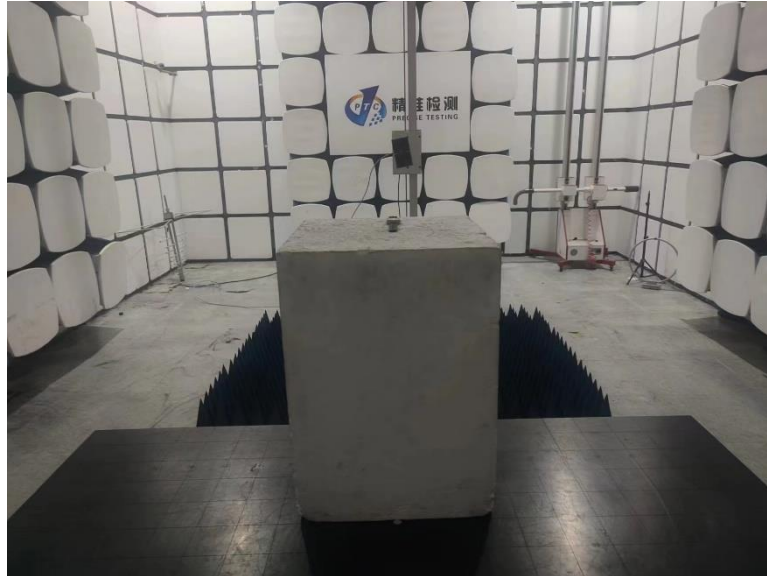
Conducted Emissions



Radiated Emissions
From 30M-1GHz



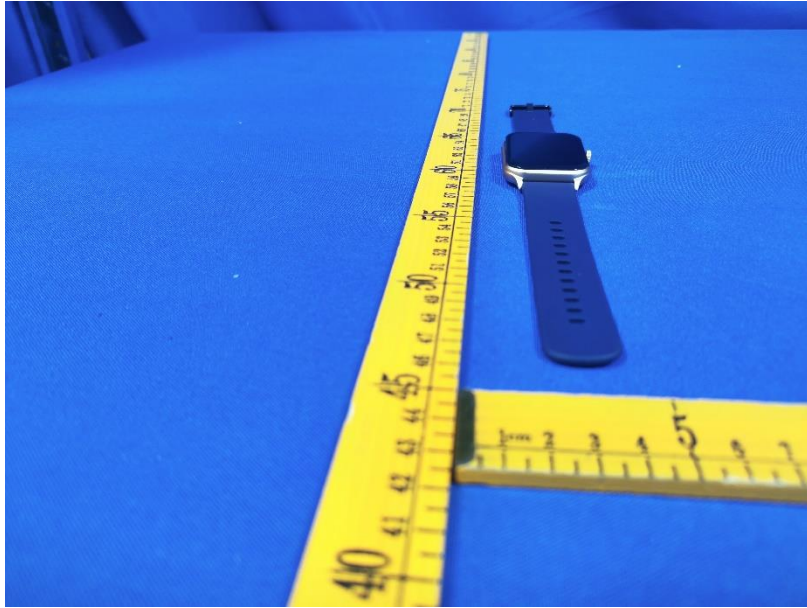
Above 1GHz

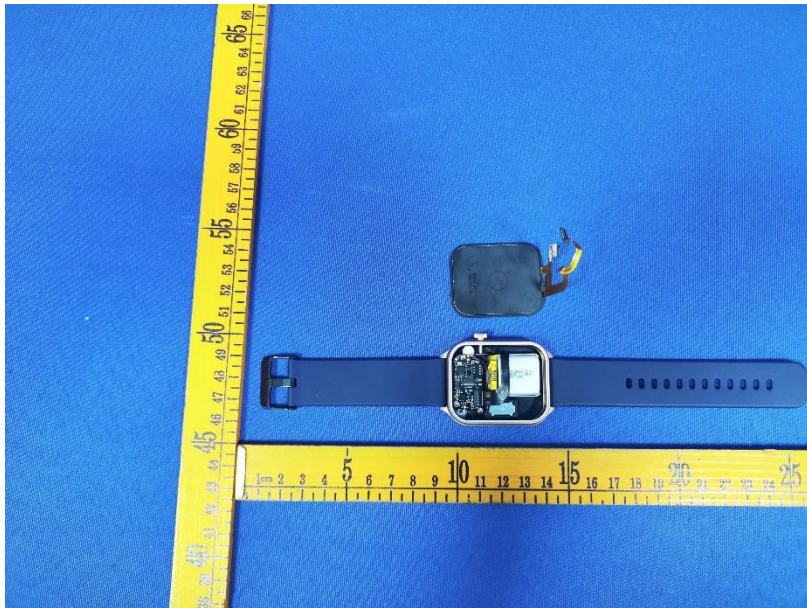
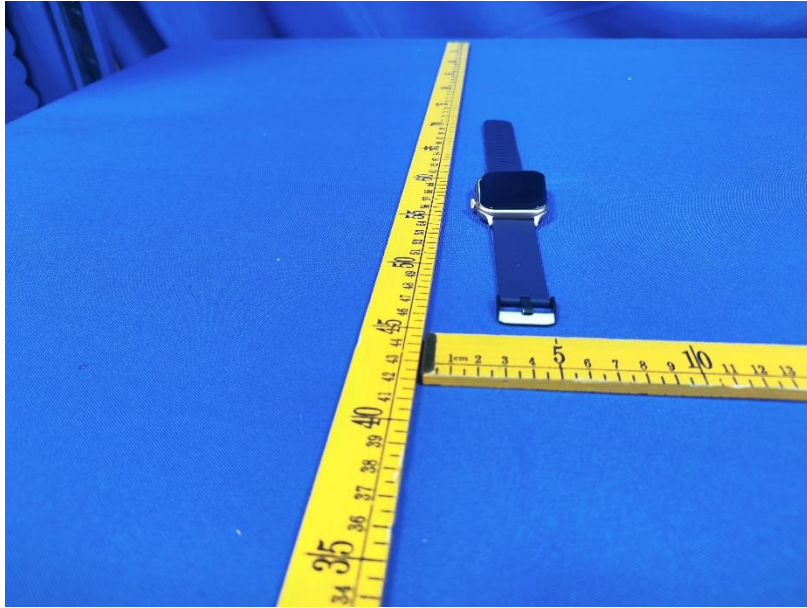


16 APPENDIX II -- EUT PHOTOGRAPH

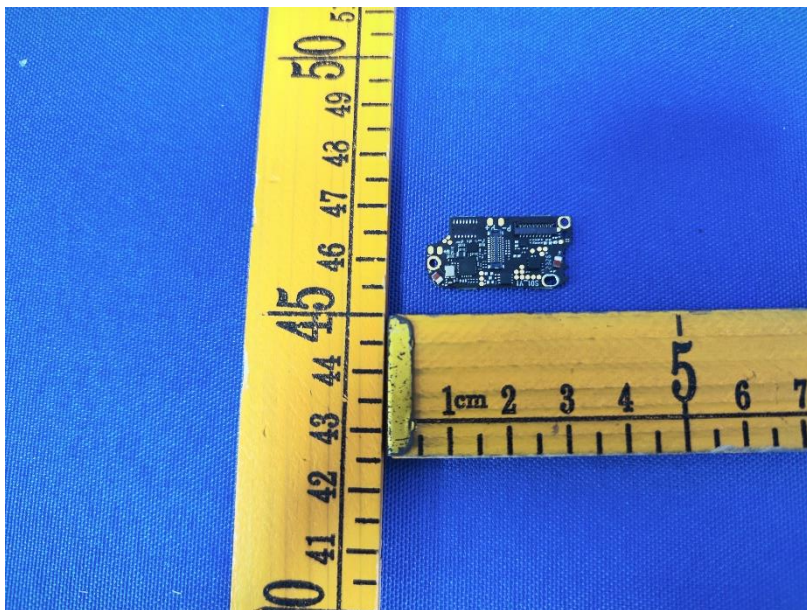


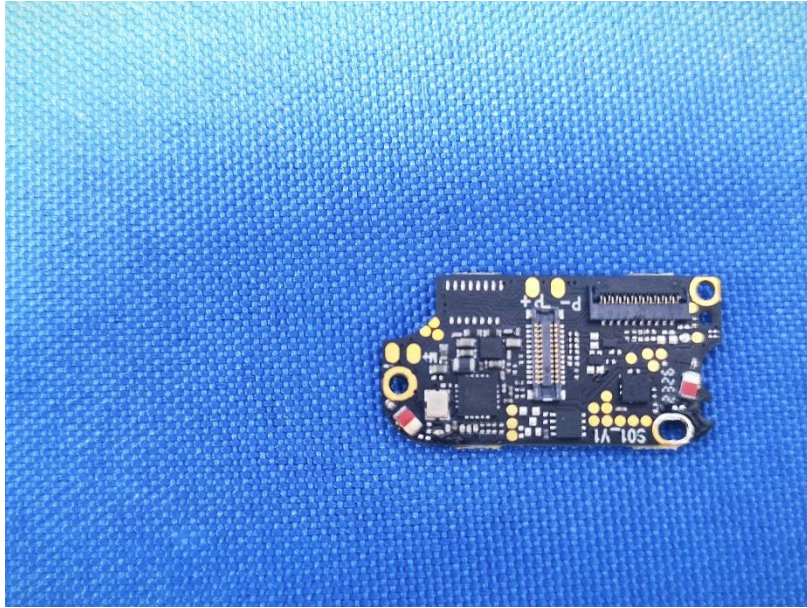


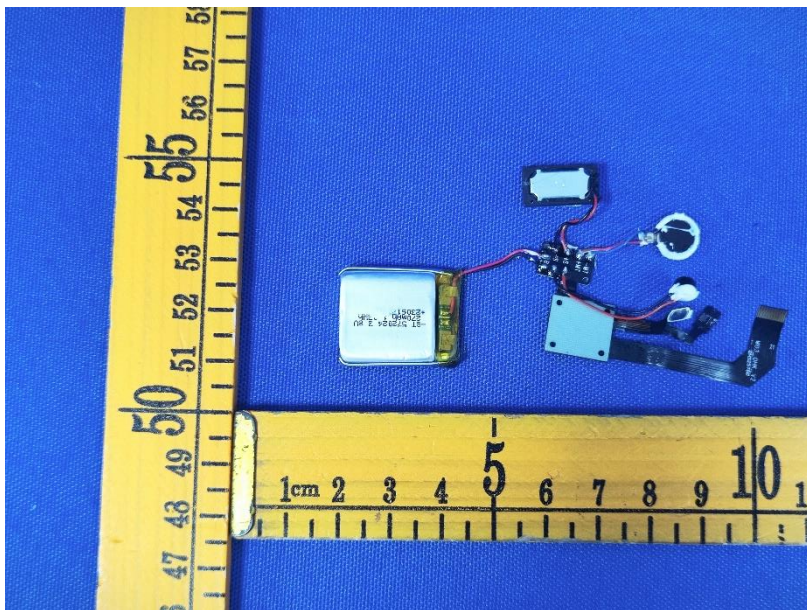
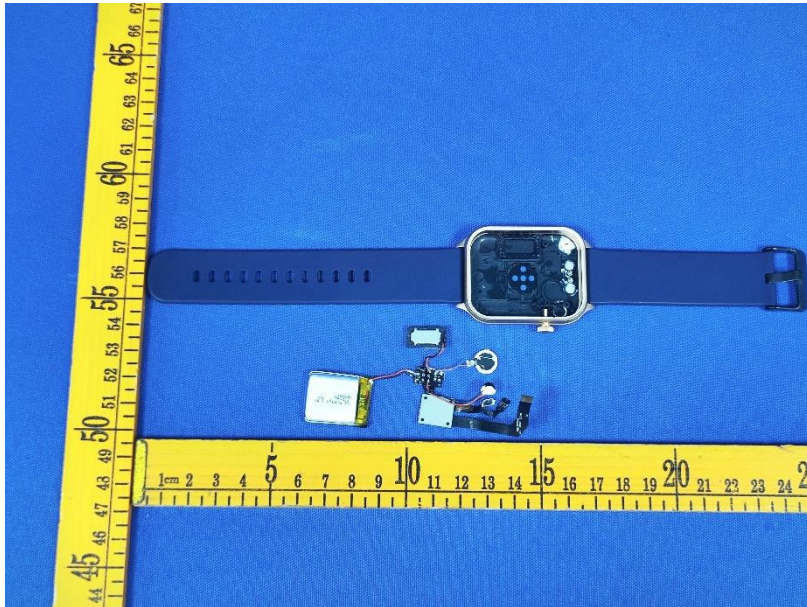


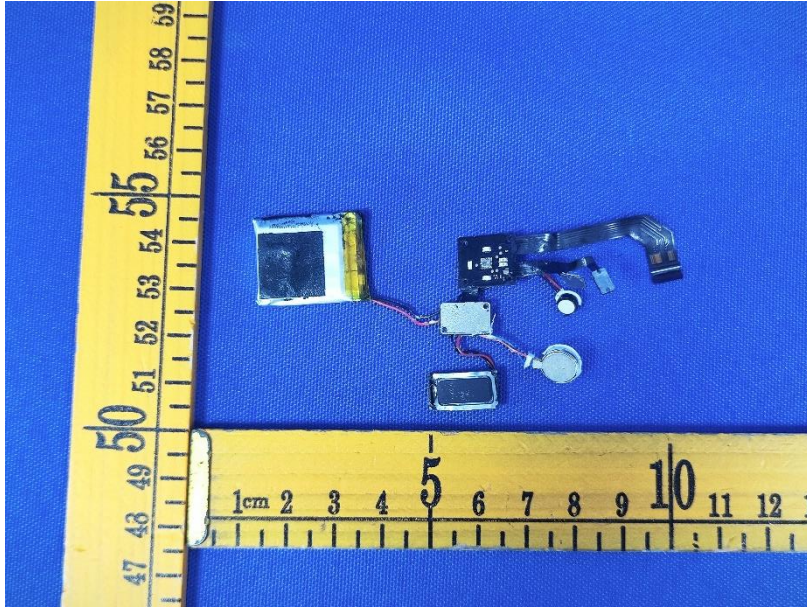












*******THE END REPORT*******