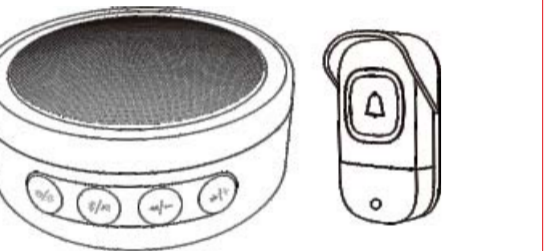


# TECKNET

## Speaker Doorbell



Model: TK-SD001

## User Manual

EN DE FR ES IT

Thank you for purchasing TECKNET Speaker Doorbell. Please read this User Manual thoroughly before use of the product and retain it for future reference. If you have any problem using this product, please contact us by email at support@tecknetonline.com.

### Package Contents



### Product Overview



1. Power Button / Lighting Button
2. Bluetooth Button / Play & Pause Button
3. Previous Track / Volume -
4. Next Track / Volume +
5. LED Light

EN-01

### Specifications

1. Receiver Doorbell Connection: 433 MHz  
Speaker Connection: BT  
BT Version: V5.2  
Wireless Frequency Band: 2.4 GHz/ 433 MHz  
Input: DC 5V-1A  
Battery Voltage: 3.7V
2. Transmitter Working Voltage: DC 3V (CR2032 x1)  
Working Current: 25mA

### Install Push Button

#### Install with the Double-sided Tape

1. Remove the battery isolation strip on the push button before use.
2. Use the included double-sided tape to stick the push button to the wall.



#### Install with the Screws

To install you will need:



Standard Screwdriver

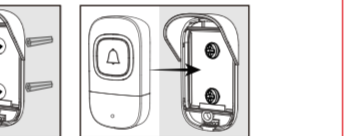
Phillips Screwdriver

EN-02

1. Remove the battery isolation strip.
2. Use a small standard screwdriver to detach the battery cover.



3. Screw mount the battery cover on the wall using the Phillips screwdriver. Snap the Push Button onto the battery cover.



### Using the Doorbell

1. **Turn on Power:** Press and hold the Power Button for 3 seconds to turn on the doorbell. You will hear "Power On".
2. **Switch Lighting Mode:** Press the Lighting Button to cycle through multiple RGB lighting effects or turn off the lighting. Stop pressing the button when you see the lighting effect you want.
3. **Select a Chime:** Press the "Previous Track" or "Next Track" button to select a chime. Stop pressing the button when you hear the chime you want.

EN-03

4. **Select a Volume Level:** Press and hold the "Volume +" or "Volume -" button for 2 seconds to choose from 8 volume levels (from mute to max). There is a prompt tone for the maximum volume.

### Using the Speaker

1. Turn on Bluetooth on your phone.
2. Turn on the speaker doorbell. Press and hold the Bluetooth Button for 2 seconds. You will hear "Bluetooth Mode. Pairing".
3. Search and tap to connect to "TK-SD001" on the Bluetooth device list of your phone. Then you will hear "Connected". The phone shows that "TK-SD001" is connected.

### Note:

The speaker doorbell can also be connected to a computer by following the above steps.

### Clear BT Pairing Record

1. Turn on the Bluetooth mode of the speaker doorbell.
2. Press and hold the Volume - and Volume + button for over 5 seconds, and you'll hear a prompt tone, showing that the speaker has cleared Bluetooth pairing records.

EN-04

### Operations Instructions

Button	Function	Operation Instructions
	Power on	Press and hold for 3s
	Power off	Press and hold for 3s
	Switch Lighting Mode	Press once
	Turn on Bluetooth mode	Press and hold for 2s
	Turn off Bluetooth mode	Press and hold for 2s
	Play/Pause	In Bluetooth mode, press the button once to play or pause music when playing music.
	Clear Push Button Pairing Record	Turn off Bluetooth mode. Press and hold the "Bluetooth Button" and "Previous Track" for 5s
	Pair Push Button to Speaker Doorbell	Turn off Bluetooth mode. Press and hold the "Bluetooth Button" and "Next Track" for 2s. Then press the Push Button.
	Previous Track / Volume -	Press once
	Lower the volume	Press and hold for 2s
	Next Track / Volume +	Press once
	Raise the volume	Press and hold for 2s

EN-05

### LED Indicator Light

Mode	Indicator	Status
Power On	LED Light	Blue light flashes twice
Power Off	LED Light	Red light flashes twice
Low Battery	Battery Indicator	Red light flashes slowly
Charging	Battery Indicator	Steady red light
Fully Charged	Battery Indicator	Red light goes out
Clear Push Button Pairing Record	LED Light	Red light flashes 3 times
Pair Push Button to Speaker Doorbell	LED Light	Blue light flashes

### Voice Prompt

Status	Voice Prompt
Power On	Power On
Power Off	Power Off
Low Battery	Low battery. Please charge.
Turn on Bluetooth Mode	Bluetooth Mode. Pairing
Turn off Bluetooth Mode	Ding-dong
Bluetooth Connected	Connected
Bluetooth Disconnected	Disconnected. Pairing
Clear Bluetooth Pairing Record	Clear matching record
Clear Push Button Pairing Record	Ding-dong, Ding-dong
Pair Push Button to Speaker Doorbell	Ding-dong

EN-06

### Pair Push Button to Speaker Doorbell

The Push Button and Speaker Doorbell are already paired, so you can use them straight out of the box. In case of any time you need to pair them, follow the steps below:

1. Press and hold the Bluetooth Button for 2s to turn off Bluetooth mode.
2. Press and hold the "Bluetooth Button" and "Next Track" for 2s, and you'll hear a "Ding-dong" prompt, showing that the Speaker Doorbell is in the pairing status.
3. Press the Push Button, and the speaker doorbell plays the selected chime, which means the pairing operation is completed.

### Tips:

One pairing operation can only connect one push button. One speaker doorbell can be paired with up to 20 push buttons.

### For home installation scenarios, please read the following precautions carefully:

1. Make sure that there is no interference from wireless radio devices of the same frequency (433MHz) within the range of use.
2. DO NOT install the transmitter on metal doors, windows, surfaces, or semi-closed metal frames, which will severely reduce the transmission distance.
3. The receiver should be installed as far away as possible from metal objects, household appliances or other electrical equipment. Electromagnetic interference will affect the wireless signal of the doorbell.
4. Avoid obstacles between the transmitter and receiver as much as possible. The receiver should be installed as close to the direction of the transmitter as possible.
5. The wireless signal strength of the doorbell ranks from strong to weak in houses made of plank, brick, and concrete.

EN-07

### IMPORTANT SAFETY INSTRUCTIONS-CAREFULLY FOLLOW THESE INSTRUCTIONS.

1. RETAIN THESE INSTRUCTIONS - This sheet contains important safety and operating instructions.
2. Before using the product, read all instructions and caution markings on the product, accessories, and device.
3. This appliance is not intended for use by persons (including children) with reduced physical, sensory or mental capabilities, or lack of experience and knowledge, unless they have been given supervision or instruction concerning use of the appliance by a person responsible for their safety.
4. Children should be supervised to ensure that they do not play with the appliance.
5. Keep the product away from the fire to avoid an explosion.
6. For proper insertion, please observe polarity indicators (+/-).
7. Do not place the product in or near an inflammable, explosive, or hazardous object.
8. The doorbell is waterproof to some extent, but it still needs some protection so that it can function normally, so please do not place it in or near water, rain, excess moisture, or extreme heat.
9. Do not operate the product with a damaged cord or plug.
10. Do not operate the product if it has been damaged in any way.
11. Do not disassemble the product. Disassembly may result in a risk of safety hazards.
12. Do not throw or shake the product.

EN-08

### FCC STATEMENT:

This device complies with Part 15 of the FCC Rules. Operation is subject to the following two conditions:

- (1) This device may not cause harmful interference, and
- (2) This device must accept any interference received, including interference that may cause undesired operation.

Warning: Changes or modifications not expressly approved by the party responsible for compliance could void the user's authority to operate the equipment.

NOTE: This equipment has been tested and found to comply with the limits for a Class B digital device, pursuant to Part 15 of the FCC Rules. These limits are designed to provide reasonable protection against harmful interference in a residential installation. This equipment generates uses and can radiate radio frequency energy and, if not installed and used in accordance with the instructions, may cause harmful interference to radio communications.

However, there is no guarantee that interference will not occur in a particular installation. If this equipment does cause harmful interference to radio or television reception, which can be determined by turning the equipment off and on, the user is encouraged to try to correct the interference by one or more of the following measures:

- ~ Increase the separation between the equipment and receiver.
- ~ Connect the equipment into an outlet on a circuit different from that to which the receiver is connected.
- ~ Consult the dealer or an experienced radio/TV technician for help.

**The device has been evaluated to meet general RF exposure requirement. The device can be used in portable exposure condition without restriction.**

EN-09

### Limited 12-Month Warranty

*What this warranty covers.*

Shenzhen Unichain Technology Co., LTD. (Manufacturer: "Unichain") warrants to the original purchaser of this TECKNET product that the product shall be free of defects in design, assembly, material, or workmanship.

*What the period of coverage is.*

Unichain warrants the TECKNET product for 12 Months.

*What will we do to correct problems?*

Unichain will repair or replace, at its option, any defective product free of charge (except for shipping charges for the product).

*What is not covered by this warranty?*

All above warranties are null and void if the TECKNET product is not provided to Unichain for inspection upon Unichain's request at the sole expense of the purchaser, or if Unichain determines that the TECKNET product has been improperly installed, altered in any way, or tampered with. The TECKNET Product Warranty does not protect against acts of God such as flood, earthquake, lightning, war, vandalism, theft, normal-use wear and tear, erosion, depletion, obsolescence, abuse, damage due to low voltage disturbances (e.g. brownouts or sags), non-authorized program, or system equipment modification or alteration.

*How to claim the warranty*

Please contact retailers or visit TECKNET website or email support@tecknetonline.com for more information. To extend the warranty period, please visit TECKNET website and register your TECKNET products within 90 days of purchase.

*Disclaimer*

Every effort has been made to ensure that the information and procedures in this guide are accurate and complete, no liability can be accepted for any errors or omissions and we reserve the right to make any changes without further notice to any products mentioned herein.

EN-10

### Correct Disposal of This Product:

( Waste Electrical& Electronic Equipment )

This Marking shown on the product or its literature, indicate that it should not be disposed with other household wastes at the end of its working life.

To prevent possible harm to the environment or human health from uncontrolled waste disposal, please separate this from other types of wastes and recycle it responsibly to promote the sustainable reuse of material resources.

Household user should contact either the retailer where they purchased this product, or their local government office, for details of where and how they can take this item for environmentally safe recycling.

Business users should contact their supplier and check the terms and conditions of the purchase contract. This product should not be mixed with other commercial wastes for disposal.

### SIMPLIFIED EU DECLARATION OF CONFORMITY

Hereby, Shenzhen Unichain Technology Co., Ltd. declares that the product type TK-SD001 is in compliance with Directive 2014/53/EU.

The full text of the EU declaration of conformity is available at the following internet address: <https://eu.tecknetonline.com/>

EN-11