



## **WIRELESS WIND SPEED / DIRECTION SENSOR**

Models: WS 010-2, WSD 011-2

### **DIFFERENCE DESCRIPTION**

Navis Elektonika d.o.o.  
Kamnik, 27.3.2017

Miha Korošec

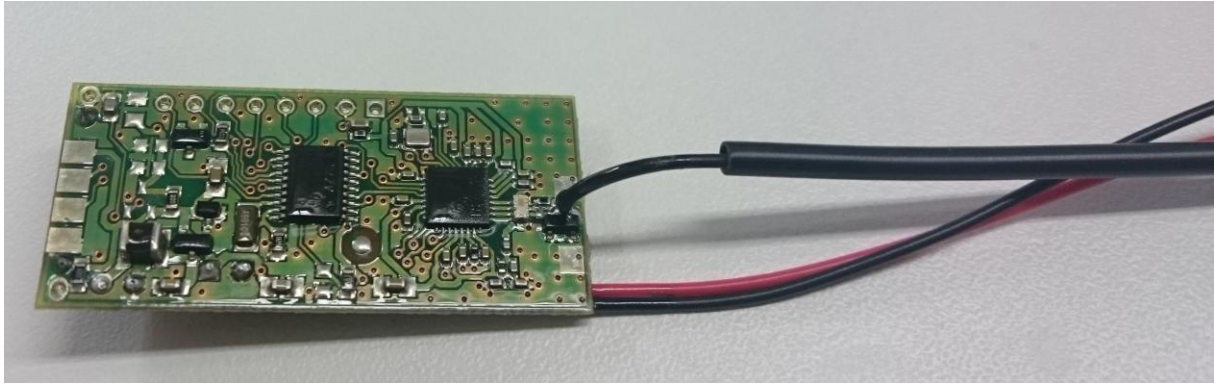
# 1. WIND SPEED SENOSR: WS 010-2



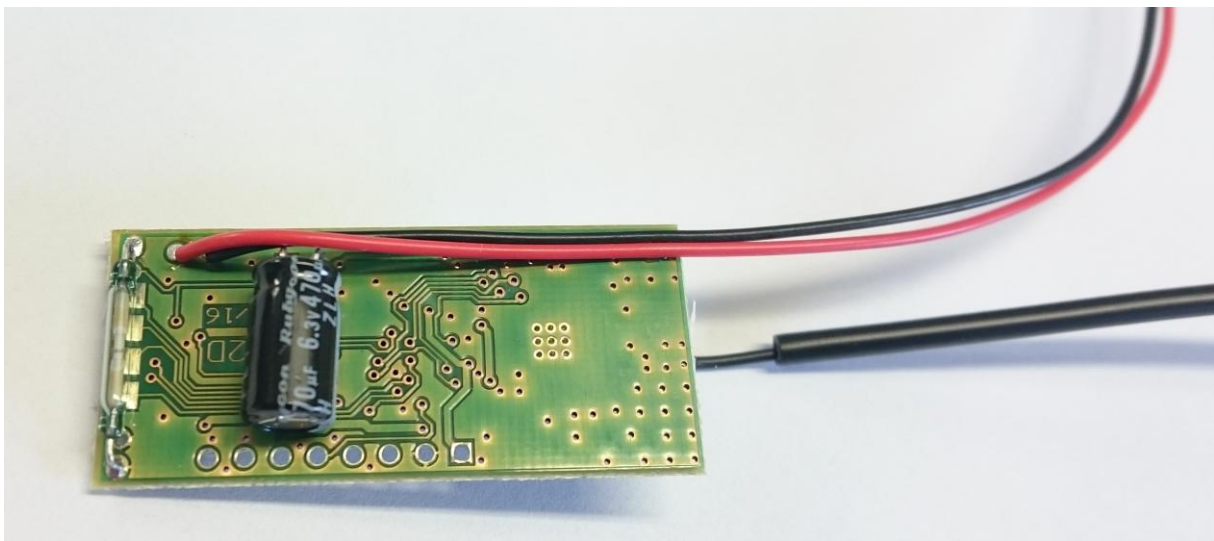
PICTURE 1: WIND SPEED SENOSR WS 010-2



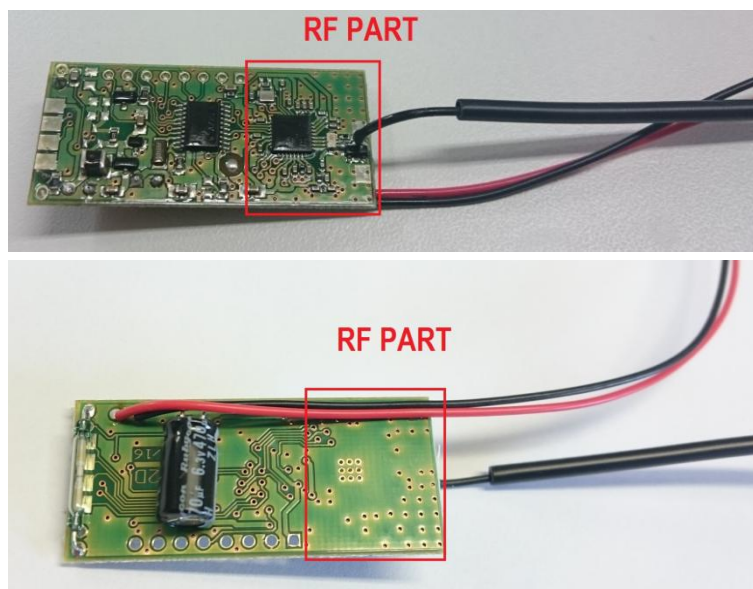
PICTURE 2: ASSEMBLY PARTS OF WS 010-2



PICTURE 3: MAIN PCB (FRONT VIEW) OF WS 010-2



PICTURE 4: MAIN PCB (BACK VIEW) OF WS 010-2

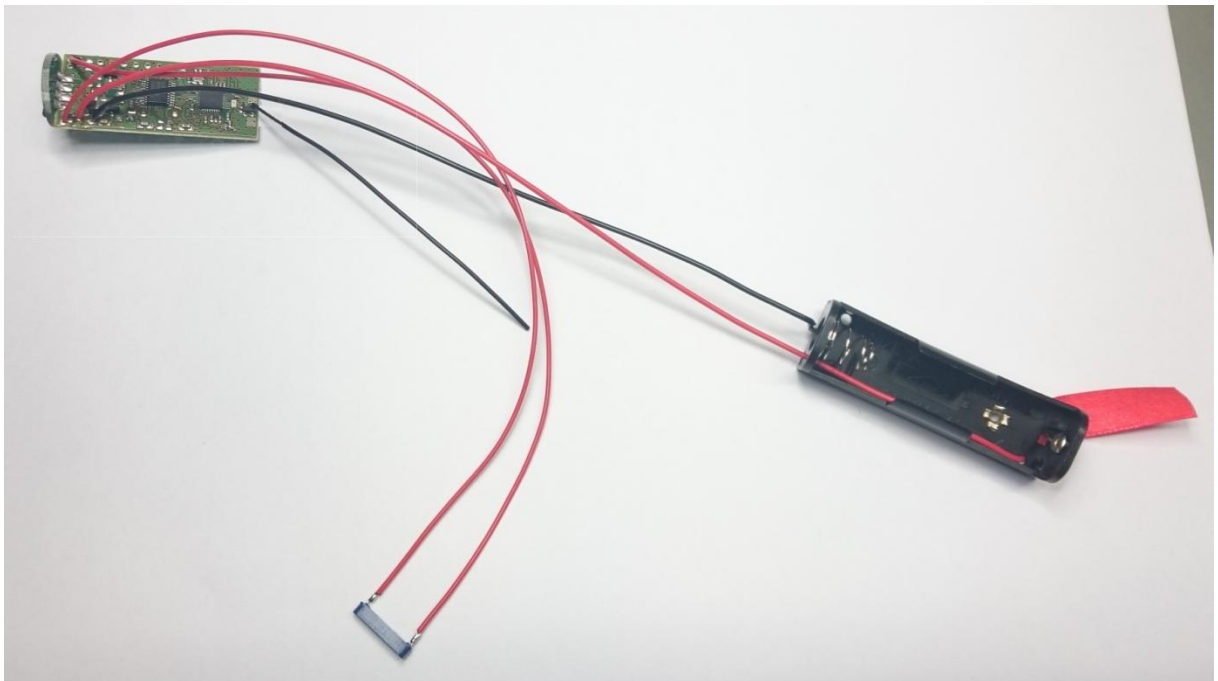


PICTURE 5: MAIN PCB (FRONT AND BACK VIEW) OF WS 010-2 WITH MARKED RF PART

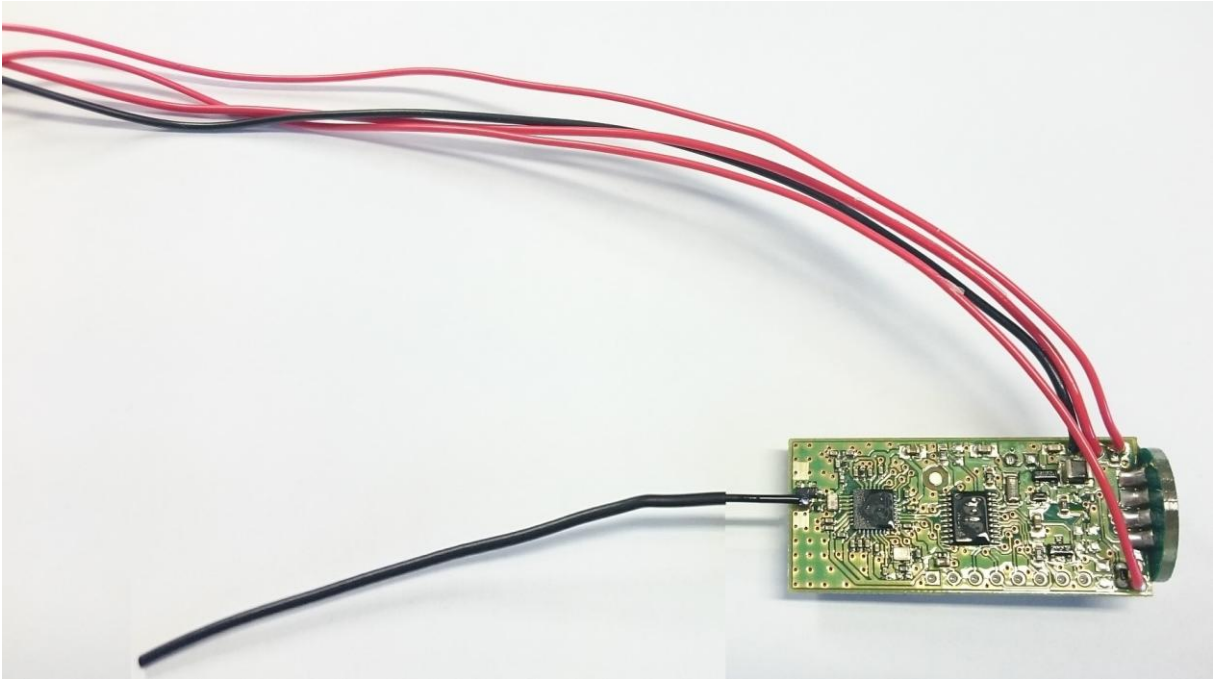
2. WIND SPEED AND DIRECTION SENOSR: WSD 011-2



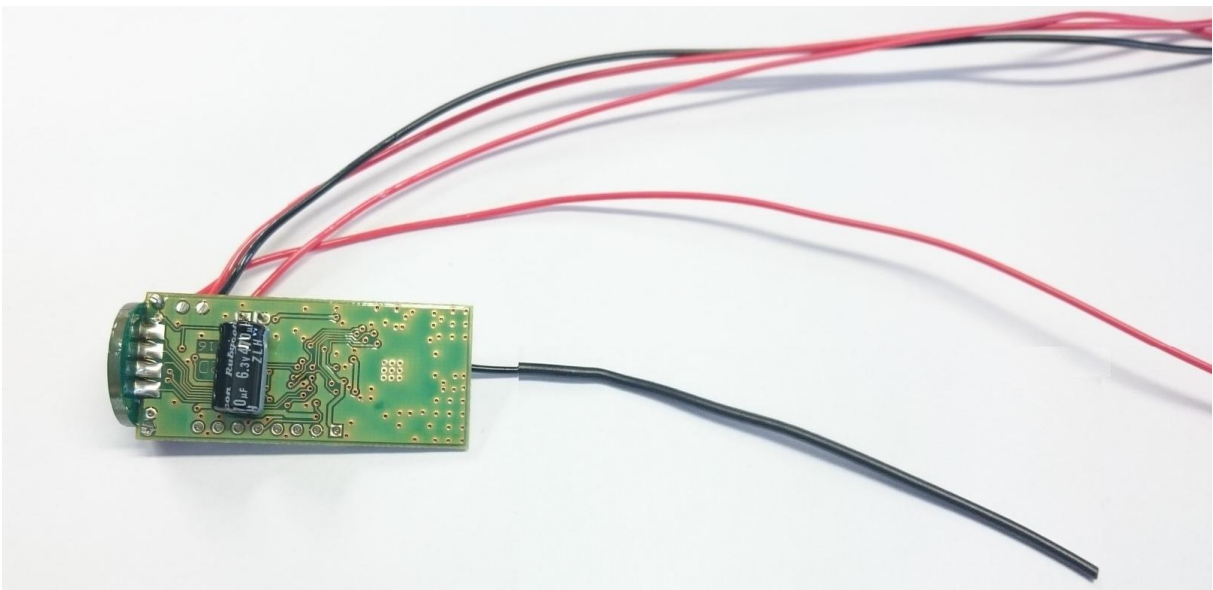
PICTURE 6: WIND SPEED AND DIRECTION SENOSR WSD 011-2



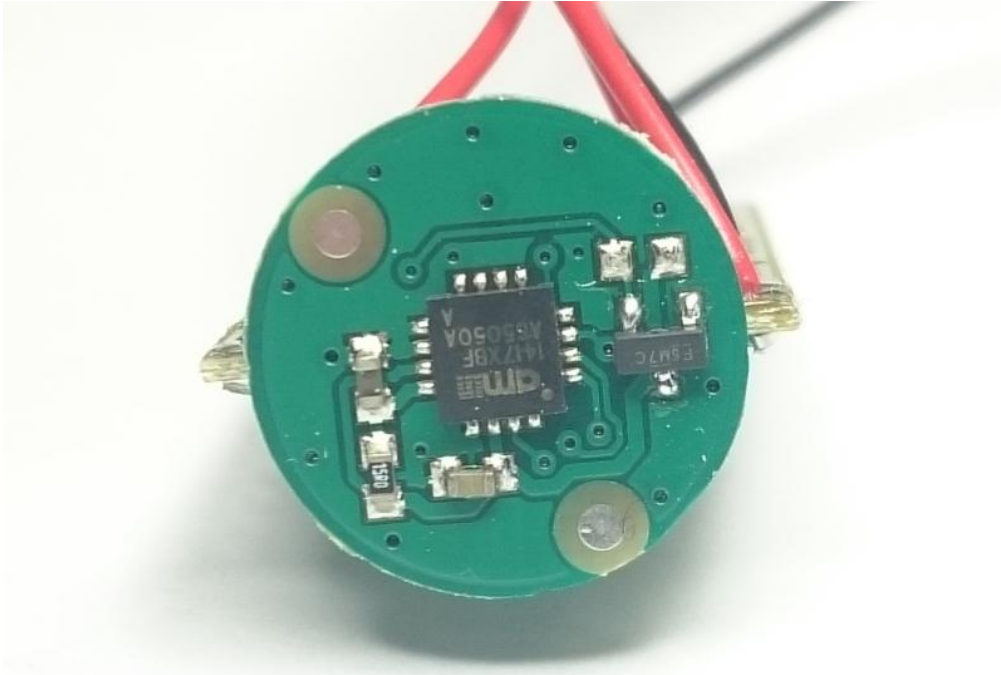
PICTURE 7: ASSEMBLY PARTS OF WSD 011-2



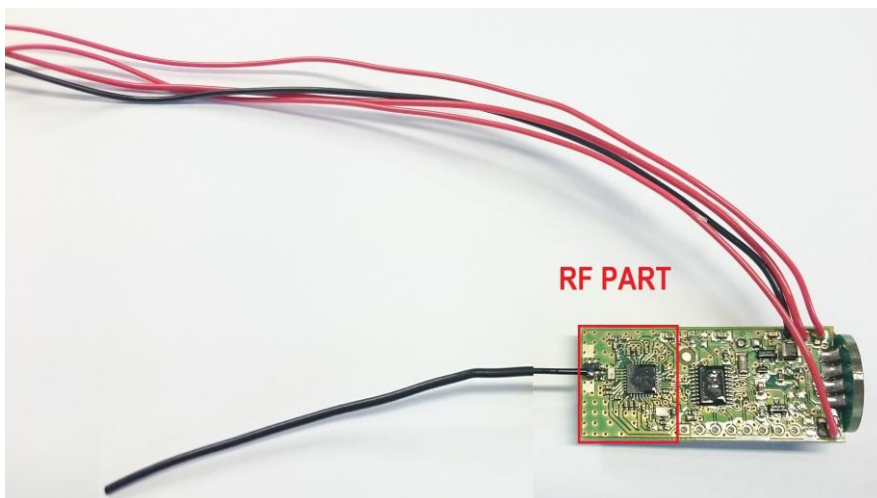
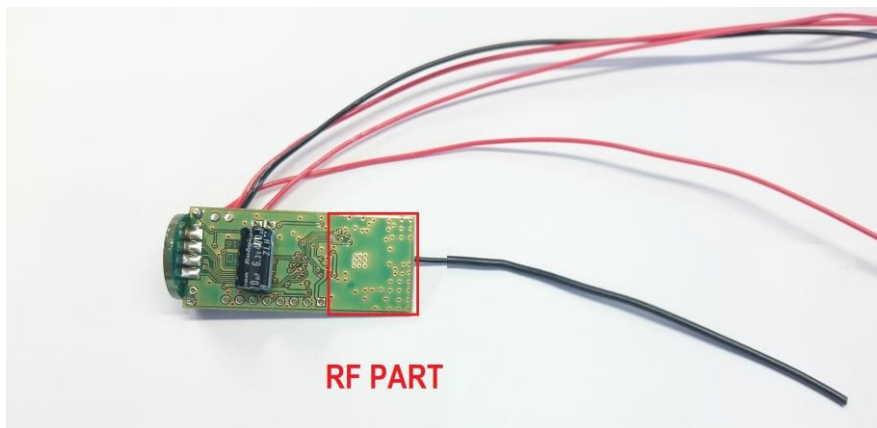
PICTURE 8: MAIN PCB (FRONT VIEW) OF WSD 011-2



PICTURE 9: MAIN PCB (BACK VIEW) OF WSD 011-2



PICTURE 9: ADDED PCB WITH ANGLE SESNOR ON WSD 011-2



PICTURE 10: MAIN PCB (FRONT AND BACK VIEW) OF WSD 011-2 WITH MARKED RF PART

### 3. DIFFERENCE BETWEEN WS 010-2 AND WSD 011-2 SENSORS

#### Brief description:

Difference between WS 010-2 and WSD 011-2 is in angle measurement. WSD 011-2 include additional electrical circuit with angle sensor, added wind vane and different mounting holder for wind sensor. **Both WS 010-2 and WSD 011-2 have identical main PCB with identical RF circuitry and RF specifications.**

#### Detailed description:

- Added angle sensor - electrical part:

WSD 011-2 include additional round PCB with angle sensor (picture 9). PCB with angle sensor is attached to main PCB with no affective changes on main PCB (picture 8, picture 9). There is also no change on RF part of main PCB.

- Added angle sensor - mechanical part:

WSD 011-2 include rotary mechanical element with wind vane in lower part of chassis (picture 7). Purpose of rotary mechanical element is giving rotation position to angle sensor on PCB.

- Location of wind speed sensor element:

Wind speed sensor element in WS 010-2 is located on main PCB.

Wind speed sensor element in WSD 011-2 is attached from rotary mechanical element to main PCB through connectable wires (picture 7).

- WS 010-2 and WSD 011-2 installation:

WS 010-2 can be installed on mounting spot with dedicated mounting holder at the bottom of the enclosure.

WSD 011-2 can be installed on mounting spot with dedicated mounting holder at the middle of the enclosure.