

Thank you for purchasing Stealthcam WiFi portable card reader, USB HUB, External storage combo device. This portable wireless device can stream media to other devices. It stores your files , documents, movies, music, photos and share them with your iPad, smart phone, media player, notebook wirelessly. Your WiFi Combo device can be used with any Apple, PC, and Android devices. It enables you to have additional storage space on the devices. With Apple authentication supporting software you can store and stream videos/files right from your fingertip. It can accept both SD and TF (Micro SD). Please note SD and TF memory card cannot be used simultaneously. You can share this WiFi combo unit up to 5 users simultaneously.

### Primary Function

- Wireless external storing/accessing.
- Power bank: A built in 3,000 mAh Lithium battery can be used as an emergency power supply to charge a mobile phone.
- Can be used as a normal card reader when connect with computer via USB cable.

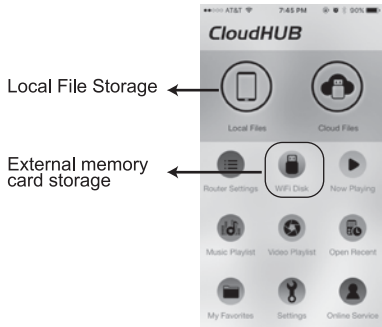
### Memory Size Compatibilities

- This WiFi unit supports up to 256GB memory capacity with FAT or EXFAT.

1

### Cloud Hub App Screen

#### Most Commonly Used Functions

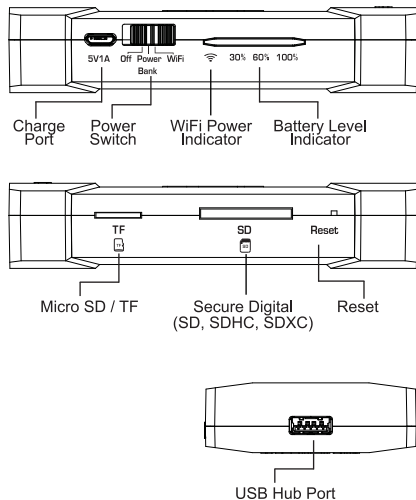


5

### Switching memory cards

Your unit support hot swap. Therefore if you have more than one memory card you want to view you may pull out the memory card at any time and insert another memory card without turning off the unit.

### Product Overview

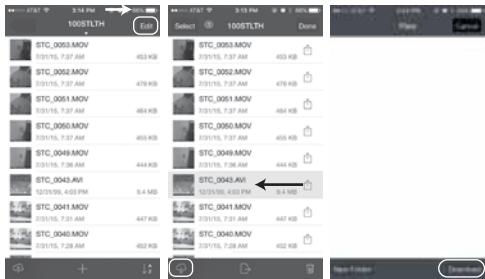


2

### Download video files

Download your video file to the local storage for off line viewing when you find the video playback is not smooth or when your portable device is not connected to the WiFi Unit.

1. From your file list, choose Edit on upper right hand corner.
2. Select the file you want to download and choose Download on bottom left corner.
3. A new screen will open, press Download on bottom right hand corner.

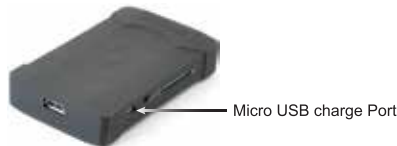


4. Screen will show download progress.
5. Once download is complete press Done on upper right hand corner You will find your file in the Local Files from home page

6

### Charge your WiFi Combo Unit

Your unit comes pre-charged. However, when the battery is about to run out, use the micro USB cable supplied with the unit to get it charged back up. Please note the input for this WiFi combo is 5V/1A, thus it will take roughly between 3~4 hours to get it fully charged.



### Battery Indicator

During charging, the blue light indicator will blink. When the unit is fully charged, the blue indicator light will turn off.

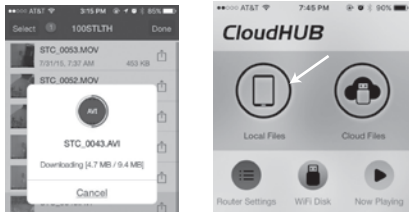
While charging the blue lights indicate different power level:

- 1 Blue light - 30% power
- 2 Blue light - 60% power
- 3 Blue light - 100% power

**Note:** WiFi unit can be used while it's charging.

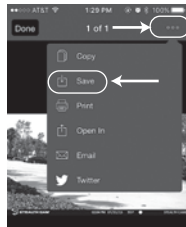
When there is only one blue light showing, it's an indication the unit needs to be charged soon.

2



### Save still image to your camera roll

1. While you are viewing your still image file, choose the 3 dots on upper right hand corner.
2. Select Save. This will save the still image into your camera roll.



7

### How to use your WiFi Combo card reader

#### Connect your WiFi Combo Unit - iOS Device

- Step 1: Download and install "Cloud Hub" from APP store.
- Step 2: Switch on the unit to WiFi function. The WiFi signal light will turn into solid red color.
- Step 3: Insert your memory card into the appropriate card slot. (please note, if your card does not go in smoothly, reverse the card. Do not force the card into the card slot as it will damage both the WiFi unit and your memory card.) Wait for approximately 40 seconds for the unit to detect the memory card. Once the WiFi red signal begin to blink, your unit is now ready to be discovered by your portable device.
- Step 4: From your portable device setting select WiFi setting. Your portable device will automatically scan the surrounding wireless network. Find network called "Cloud WiFi\_XXXX" and choose that network to connect.
- Step 5: Enter the WiFi password "12345678". This password can be changed by the user. See advance function.
- Step 6: Once the WiFi unit is connected to your portable device, launch "Cloud Hub" APP you've downloaded earlier.
- Step 7: Chose WiFi Disk icon. Depend on how your files are stored in the memory card, you may need to go through several sub folder until you see your files.
- Step 8: Once you see the list of your files, you can select the file and view either still picture or video file. If it is a video file it will play back automatically.

4

### How to use your WiFi Combo card reader

#### Connect your WiFi Combo Unit - Android Device

- Step 1: Download "ES File Explorer" from Google play store.
- Step 2: Switch on the unit to WiFi function. The WiFi signal light will turn into solid red color.
- Step 3: Insert your memory card into the appropriate card slot. (please note, if your card does not go in smoothly, reverse the card. Do not force the card into the card slot as it will damage both the WiFi unit and your memory card.) Wait for approximately 40 seconds for the unit to detect the memory card. Once the WiFi red signal begin to blink, your unit is now ready to be discovered by your portable device.
- Step 4: From your portable device setting select WiFi setting. Your portable device will automatically scan the surrounding wireless network. Find network called "Cloud WiFi\_XXXX" and choose that network to connect.
- Step 5: Enter the WiFi password "12345678". This password can be changed by the user. See advance function.
- Step 6: Once the WiFi unit is connected to your portable device, launch "ES File Explorer" APP you've downloaded earlier.
- Step 7: From home screen choose menu on upper left corner.
- Step 8: Select FTP under Network.

8