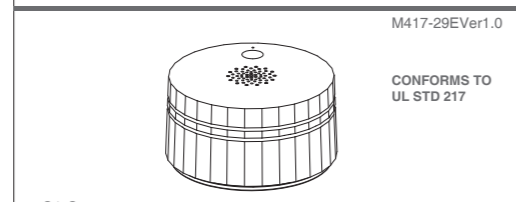


402mm

134mm

Heiman PHOTOELECTRIC SMOKE ALARM



S1-S Smoke alarm, no RF function
S1-M Smoke alarm with wireless communication function
S1-W Smoke alarm with WIFI communication function
S1-R Smoke alarm with wireless interconnection function

IMPORTANT! PLEASE READ CAREFULLY AND SAVE.

This user's manual contains important information about your Smoke Alarm Device's operation. If you are installing this Smoke Alarm Device for use by others, you must leave this manual—or a copy of it—with the end user.

The pictures shown are for reference only. As the technology is constantly updated, if actual operation is inconsistent with the user manual, please refer to the actual operation, and the final interpretation rights is reserved to the manufacturer.

Shenzhen Heiman Technology Co., Ltd.
101 No. 4 Dafu Industrial Park, Kuliang Community, Guanlan Street, Longhua District, Shenzhen, China

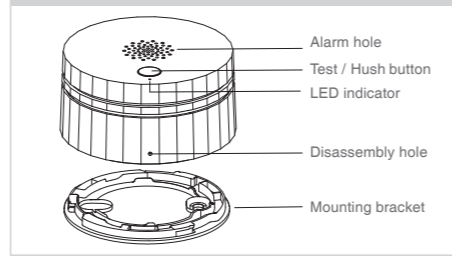
SAFETY INFORMATION

- WARNING!**
- Never ignore any alarm. If the unit alarms and you are not testing it, it is warning you of a potentially dangerous situation that requires your immediate attention.
 - Make sure no odor or other obstruction could prevent smoke from reaching the unit. The unit cannot provide an alarm if the smoke does not reach them.
 - The unit will not alert hearing impaired residents. It is recommended that you install special units with visual and vibration alarms to alert hearing impaired residents.
- CAUTION!**
- Not recommended for operation in areas where the temperature may fall below 4.4°C or rise above 37.8°C or in humidity higher than 95% as this may reduce battery life.
 - Do not stand too close to the unit when the alarm is sounding. It is loud to wake you in an emergency. Exposure to the horn at close range may harm your hearing.
 - Do not paint over the unit. Paint may clog the openings to the sensing chamber and prevent the unit from operating properly.
 - Do not point over the unit. Paint may clog the openings to the sensing chamber and prevent the unit from operating properly.

PACKING LIST

Part Name	Quantity
Smoke alarm	1 Piece
Mounting bracket	1 Piece
Battery	1 Piece
Screw	2 Pieces
Anchor plug	2 Pieces
Manual	1 Piece
Disassembly pin	1 Piece

PRODUCT DIAGRAM



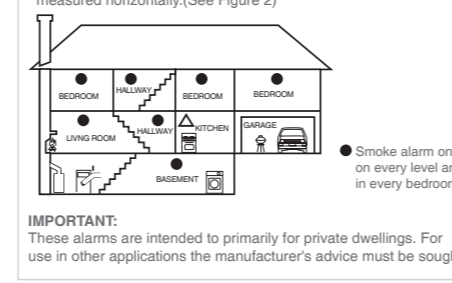
TECHNICAL SPECIFICATIONS

Working Voltage	DC3V (EVECR123A)
Battery Life	3 years
Sensor Type	Photoelectric
Alarm Sound Level	≥ 85dB (at 3m straight ahead)
Temperature Range	4.4°C to 37.8°C
Humidity Range	≤ 95%RH (no condensation)
Alarm Sensitivity	1.625%/FT ± 0.625%/FT
Dimensions	Φ70 x H37mm

RECOMMENDED INSTALLATION LOCATIONS

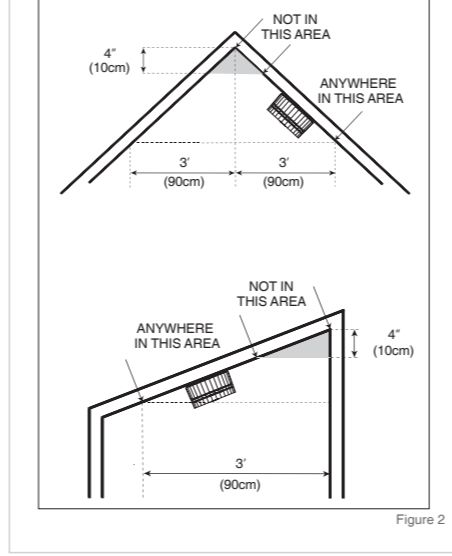
NOTICE: THIS EQUIPMENT SHOULD BE INSTALLED IN ACCORDANCE WITH THE NATIONAL FIRE PROTECTION ASSOCIATION'S STANDARD 72 (National Fire Protection Association, Batterymarch Park, Quincy, MA 02269).

- The National Fire Protection Association (NFPA) recommends installing a smoke alarm in the following areas:
- On every floor level, including finished attics and basements.
 - In every sleeping area and in every bedroom.
 - If your bedroom, hallway or large room is more than 30feet (9.1m) long, install an alarm at each end.
 - At the top of the first-to-second floor stairway and on the basement ceiling near the entry of the stairs.
 - Installing on the ceiling is recommended, but you should locate it at a minimum of 4 inches (10cm) away from the side wall. (See Figure 1)
 - When installing the alarm on the wall, a distance of 4-12inches (10-30cm) should be kept below the ceiling. (See Figure 1)
 - If you have a sloped, peaked or cathedral ceiling, the alarm should be installed within 3feet (90cm) of the peak of the ceiling measured horizontally. (See Figure 2)



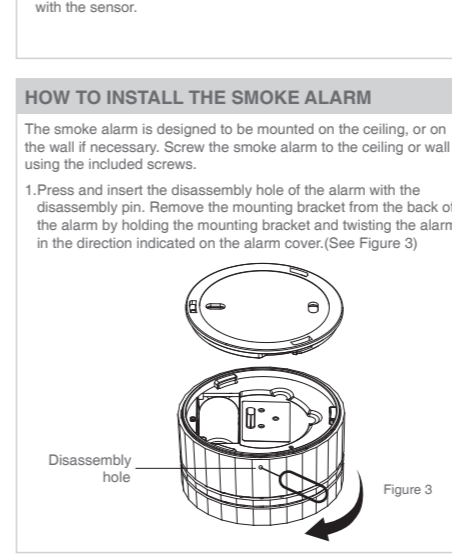
LOCATIONS TO AVOID

- For best performance, please avoid installing a smoke alarm in these areas:
- In dusty or dirty areas. Dirt and dust can build up and impair performance.
 - In areas where the normal ambient temperature is below 4.4°C (40°F) or exceeds 37.8°C (100°F), such as garages and unfinished attics.
 - In high humidity areas. Moisture or steam may cause nuisance alarms.
 - Near fresh air vents, ceiling fans, or in very drafty areas. Drafts can blow smoke away from the unit, preventing it from reaching the sensing chamber.
 - In kitchens, garages, and furnace rooms. Burning material creates combustion particles which could cause your smoke alarm to go off unnecessarily.
 - Near fluorescent lights, amateur radios, or other devices that may transmit an RF signal, as electrical "noise" can interfere with the sensor.



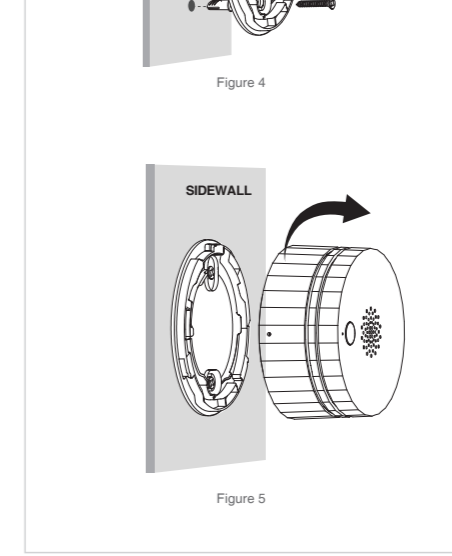
HOW TO INSTALL THE SMOKE ALARM

- The smoke alarm is designed to be mounted on the ceiling, or on the wall if necessary. Screw the smoke alarm to the ceiling or wall using the included screws.
- Press and insert the disassembly hole of the alarm with the disassembly pin. Remove the mounting bracket from the back of the alarm by holding the mounting bracket and twisting the alarm in the direction indicated on the alarm cover. (See Figure 3)



LOCATIONS TO AVOID

- Locate the mounting bracket in your chosen position, and mark the screw holes on the ceiling or the wall.
- Drill the holes at the marks with a 3/16" (5 mm) drill bit. Insert the anchor plugs and screw the mounting bracket to the ceiling or wall using the screws provided. (See Figure 4)
- Attach the smoke alarm to the mounting bracket and turn clockwise to lock the alarm. (See Figure 5)
- Test the smoke alarm. See "WEEKLY TESTING".



LED INDICATOR AND AUDIBLE ALARM

CONDITION	LED INDICATOR	AUDIBLE ALARM	NOTE
Standby condition	Red LED flashes once every 54 seconds.	None	Standby
Test condition	Red LED flashes rapidly.	3 short quick beeps	Weekly testing
Alarm condition	Red LED flashes rapidly.	3 short quick beeps	
Hush condition	Red LED flashes once every 10 seconds.	None	None(Duration:about 10 minutes)
Low battery	Red LED flashes once every 54 seconds.	1 beep every 54 seconds	Replace battery
Hush for low battery warning	Red LED flashes once every 54 seconds.	None	None(Duration:about 12 hours)
Malfunction	Red LED flashes twice every 54 seconds.	2 beeps every 54 seconds	Replace alarm

WHAT TO DO WHEN THE ALARM SOUNDS

- If the alarm sounds, check for fires first. If no fire is present, check to see if the alarm caused by nuisance alarm (caused by cooking smoke, etc.). If a fire is discovered, follow these steps:
- Get everyone out of the house immediately by your escape plan.
 - Keep doors and windows closed, unless you must escape through them.
 - Stay close to the floor if the air is smoky. Cover your nose and mouth with a cloth (preferably damp).
 - Meet at your planned meeting place outside your home and make sure everyone is there.
 - Never return to a burning building for any reason.
 - Call the fire department for ideas on making your home safer.
 - These are situations where a smoke alarm may not be effective to protect against fire as stated in the NFPA Standard 72. For instance:
 - Smoking in bed.
 - Leaving children home alone.
 - Cleaning with flammable liquids, such as gasoline.
- CAUTION!**
- An indication that current studies have shown smoke alarms may not awaken all sleeping individuals, and that it is the responsibility of individuals in the household that are capable of assisting others to provide assistance to those who may not be awakened by the alarm sound, or to those who may be incapable of safely evacuating the area unassisted.

WARNING!

- Never remove the batteries to stop an unwanted alarm (caused by cooking smoke, etc.). This will disable the alarm so it cannot sense smoke. Instead open a window or fan the smoke away from the unit.
- USING THE SILENCE FEATURE**
- The Silence Feature can temporarily quiet an unwanted alarm for approximately 10 minutes. If the smoke is not too dense, the alarm will silence immediately and the red LED will flash every 10 seconds. If smoke around the unit is dense enough to suggest a potentially dangerous situation, the unit will stay in alarm or may re-alarm quickly. This feature is to be used only when a known alarm condition, such as smoke caused by cooking. To use this feature, press the "Test/Hush" button on the cover.
- WARNING!**
- Before using the silence feature, identify the source of the smoke and be certain a safe condition exists. If you do not know the source of the smoke, do not assume it is an unwanted alarm. Not responding to an alarm can result in property loss, injury, or death.
- The silence feature is only for your convenience and will not correct a problem. Always check your home for a potential problem after any alarm. Failure to do so can result in injury or death.

SILENCING THE LOW BATTERY WARNING

- This silence feature can temporarily quiet the low battery warning "chirp" for up to 12 hours. You can silence the low battery warning by pressing the "Test/Hush" button on the alarm cover.
- Replace the battery as soon as possible, this unit will not operate without battery power!

TESTING AND MAINTENANCE

- WEEKLY TESTING**
- It is important to test this unit weekly to make sure it is working properly. Using the Test/Hush button to test this Smoke Alarm. Press and hold the Test/Hush button on the cover of the unit until the alarm sounds (the unit may continue to alarm for a few seconds after you release the button). If it does not alarm, make sure the unit is receiving power, and test it again. If it still does not alarm, replace it immediately. During testing you will hear a loud, repeating horn pattern: 3 beeps, pause, 3 beeps, pause.
- WARNING!**
- Test the alarm device weekly to ensure proper operation. If the alarm ever fails to test correctly, have it replaced immediately. If the alarm is not working properly, it cannot alert you to a problem. NEVER use an open flame of any kind to test this alarm. You might accidentally damage or set fire to the unit or to your home. DO NOT stand close to the alarm when the horn is sounding, always stand an arms-length away from the unit when testing.

REGULAR MAINTENANCE

- To keep the alarm working properly, follow these simple methods:
- Test the alarm at least once a week to verify the unit's alarm and indicator are working properly.
 - Clean the alarm annually by using compressed air or a vacuum cleaner hose. Never use water, cleaners or solvents since they may damage the unit.
 - If the smoke alarm cannot be cleaned to avoid unwanted alarms, replace the alarm immediately.
 - When you hear the low battery warning "chirp" approximately once every 54 seconds, please replace the battery immediately to continue your protection.

BATTERY REPLACEMENT

- The smoke alarm requires one 3V battery: CR123A. The battery can be purchased at your local retail stores or where you purchased this alarm.
- WARNING!**
- Use only batteries specified by this User's Manual. Use of a different battery will have a detrimental effect on smoke alarm operation. Constant exposures to high or low temperatures or high humidity may reduce battery life.
 - Unit will not operate without battery power. Alarm will warn you in advance when battery is running low so that you can replace it.
- AGENCY PLACEMENT RECOMMENDATIONS**
- NFPA 72 Chapter 29
"For your information, the National Fire Alarm and Signaling Code, NFPA 72, reads as follows:
"29.5.1 "Required Detection."
"29.5.1.1 Where required by other governing laws, codes, or standards for a specific type of occupancy, approved single and multiple-station smoke alarms shall be installed as follows:"

CALIFORNIA STATE FIRE MARSHAL (CSFM)

- Early warning detection is best achieved by the installation of fire detection equipment in all rooms and areas of the household as follows:
- A smoke alarm installed in each separate sleeping area (in the vicinity, but outside bedrooms), and Heat or smoke alarms in the living rooms, dining rooms, bedrooms, kitchens, hallways, finished attics, furnace rooms, closets, utility and storage rooms, basements, and attached garages.
- LIMITATIONS OF SMOKE ALARMS**
- Smoke alarms can help save lives by providing an early warning of a fire, but they are not foolproof. Smoke Alarms can only work if they are properly located, installed, and maintained, and if smoke reaches them.
- This smoke alarm device is NOT designed to be the PRIMARY protection for buildings that require complete fire alarm systems. Buildings of this type include hotels, motels, dormitories, hospitals, nursing homes, and group homes. This is true even if they were once single family homes. However, this smoke alarm device may be used inside individual rooms as supplemental protection.
- Smoke alarms cannot work without power. The battery powered alarm use only batteries specified by this User's Manual. Use of a different battery will have a detrimental effect on smoke alarm operation.

Statement

(1) "In all sleeping rooms and guest rooms.
(2) "Outside of each separate dwelling unit sleeping area, within 21 ft (6.4 m) of any door to a sleeping room, with the distance measured along a path of travel.
(3) On every level of a dwelling unit, including basements.
(4) On every level of a residential board and care occupancy (small facility), including basements and excluding crawl spaces and unfinished attics.
(5) In the living area(s) of a guest suite.
(6) In the living area(s) of a residential board and care occupancy.
(Reprinted with permission from NFPA 720, National Fire Alarm and Signaling Code Copyright © 2012 National Fire Protection Association, Quincy, MA 02269. This reprinted material is not the complete and official position of the National Fire Protection Association, on the referenced subject which is represented only by the standard in its entirety.)

(National Fire Alarm and Signaling Code" and NFPA 72" are registered trademarks of the National Fire Protection Association, Inc., Quincy, MA 02269.)

CAUTION!

This device contains license exempt transmitter(s) (licensee(s)) that comply with Innovation, Science and Economic Development Canada's license-exempt RSS(s). Operation is subject to the following two conditions:
(1) This device must accept any interference received, including interference that may cause an unintended operation of the device.
(2) This device must not cause harmful interference.
Changes or modifications not expressly approved by the party responsible for compliance could void the user's authority to operate the equipment.

Note:
This equipment has been tested and found to comply with the limits for a class B digital device pursuant to Part 15 of the FCC Rules. These limits are designed to provide reasonable protection against harmful interference in a residential installation. This equipment has been tested and found to comply with the limits for a class B digital device pursuant to part 15 of the FCC Rules. These limits are designed to provide reasonable protection against harmful interference in a residential installation. This equipment's operation could cause radio frequency interference and, if not properly shielded and used in accordance with the instructions, may cause harmful interference to radio communications. However, there is no guarantee that interference will not occur in a particular installation. If the equipment does cause harmful interference to radio or television reception, which can be determined by turning the equipment off and on, the user is encouraged to try to correct the interference by one or more of the following measures:
—Reorient or relocate the receiving antenna.
—Increase the separation between the equipment and receiver.
—Connect the equipment into an outlet on a circuit different from that to which the receiver is connected.
—Consult the dealer or an experienced radio/TV technician for help.

**Le présent appareil est conforme aux CNR d'Industrie Canada applicables aux appareils radio exempts de licence. L'exploitation est autorisée aux deux conditions suivantes:
(1) L'appareil doit accepter toute interférence radioélectrique qu'il recevra, même si elle provoque une utilisation non désirée de l'appareil.
(2) L'appareil ne doit pas produire d'interférence radioélectrique à une autre installation.**

PDF为未转曲文件, 仅供查阅
供应商做货请用AI转曲文件

尺寸: 402*134mm, 折叠后尺寸为67*67mm
材质: 80g书纸
印刷: 正反面单色印刷

注: 包材需符合RoHS, REACH认证要求

Heiman海曼 深圳市海曼科技股份有限公司
Shenzhen Heiman Technology Co., Ltd.

视角:		名称: S1海曼英文说明书UL217认证	日期: 2022-12-23
未注尺寸公差参照下表 线性公差:		型号:	制图: 梁世平
<=2 ±0.03		物料编号: 601012436	审核:
> 2~25 ±0.05		版本: Ver1.0	核准:
> 25~75 ±0.08		子件料号:	准核:
> 75~100 ±0.10		单位: mm	比例: 1: 1
> 100 ±0.15		图幅: 1/1	
角度公差 ±0.5°			