

Regulations & Compliance

Fcc Statement

Warning: Changes or modifications to this unit not expressly approved by the party responsible for compliance could void the user's authority to operate the equipment.

NOTE: This equipment has been tested and found to comply with the limits for a Class B digital device, pursuant to Part 15 of the FCC Rules. These limits are designed to provide reasonable protection against harmful interference in a residential installation. This equipment generates, uses and can radiate radio frequency energy and, if not installed and used in accordance with the instructions, may cause harmful interference to radio communications.

However, there is no guarantee that interference will not occur in a particular Installation. If this equipment does cause harmful interference to radio or television reception, which can be determined by turning the equipment off and on, the user is encouraged to try to correct the interference by one or more of the following measures:

- Reorient or relocate the receiving antenna.
- Increase the separation between the equipment and receiver.
- Connect the equipment into an outlet on a circuit different from that to which the receiver is connected.
- Consult the dealer or an experienced radio/TV technician for help.

This device complies with Part 15 of the FCC Rules. Operation is subject to the following two conditions:

- (1) This device may not cause harmful interference.
- (2) This device must accept any interference received, including interference that may cause undesired operation.

ISED Regulatory Compliance

This device contains license-exempt transmitter(s)/receiver(s) that comply with Innovation, Science and Economic Development Canada's license-exempt RSS(s). Operation is subject to the following two conditions:

1. This device may not cause interference.
2. This device must accept any interference, including interference that may cause undesired operation of the device.

L'émetteur/récepteur exempt de licence contenu dans le présent appareil est conforme aux CNR d'Innovation, Sciences et Développement économique Canada applicables aux appareils radio exempts de licence.

L'exploitation est autorisée aux deux conditions suivantes :

1. *L'appareil ne doit pas produire de brouillage;*
2. *L'appareil doit accepter tout brouillage radioélectrique subi, même si le brouillage est susceptible d'en compromettre le fonctionnement.*

RF Exposure Compliance

This equipment complies with FCC/IC radiation exposure limits set forth for an uncontrolled environment. This equipment should be installed and operated with minimum distance 20cm between the radiator and your body.

Cet équipement est conforme aux limites d'exposition aux radiations FCC/IC établies pour un environnement non contrôlé. Cet équipement doit être installé et utilisé avec une distance minimale de 20 cm entre le radiateur et votre corps.



For North and South America, please visit www.toucan-smarhome.com
For Europe and UK region, please visit www.toucan-smarhome.co.uk

VuPoint Solutions, Inc. (USA):
710 Nogales Street, City of Industry, CA 91748

 facebook.com/toucan-smarhome

 Instagram.com/toucan-smarhome

 Youtube.com/c/toucan-smarhome



©2021 VUPOINT SOLUTIONS, INC. All Rights Reserved.

The Toucan logo and Toucan are trademarks or registered trademarks of VuPoint Solutions Inc. in the United States and other countries. App Store is a registered trademark of Apple Inc.; iOS is a registered trademark of Cisco Technology, Inc. in the U.S. and other countries and is under license. Android and Google Play are registered trademarks of Google LLC. Product names, logos, brands and other trademarks referred to herein are the property of their respective trademark holders. All trademarks remain the property of their respective holders, and are used only to describe the products or services being provided. These trademark holders are not affiliated with VuPoint Solutions, Inc. They do not sponsor or endorse VuPoint Solutions, Inc's products or services.



We Make Security Easy



TSLC10WU

Security Light Camera Quick Start Guide

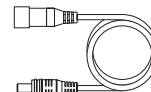
Items Included



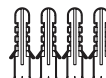
Security Light Camera



Secure Camera Mount



6m Power Cable



Wall Anchors



Screws



2m Power Supply

Thank You Card

Warranty Card

Quick Start Guide

Get to know your Security Light Camera



Set up your Security Light Camera

1 Download the Toucan App



Scan QR code or visit www.toucan-smarthome.com/pages/smarthomeapp
Available at Apple® App Store® and Google Play™

2 Login to the App



Create your Toucan account and login

3 Add and pair your device



Tap the "+" to add a device



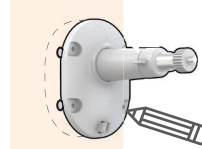
Follow the In-App instructions and device voice prompts to complete the setup

LED Description

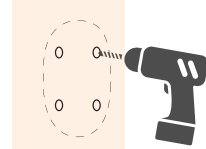
Flashing BLUE	Setup Mode
Flashing PURPLE	Connecting to cloud server, DO NOT TURN OFF POWER
Flashing RED	Connection Failed

Install your Security Light Camera

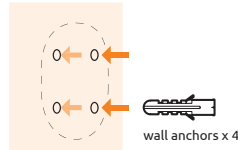
1 Mark the holes



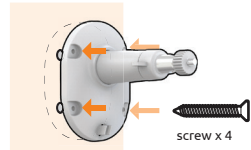
2 Drill the holes



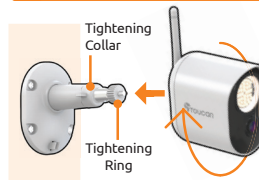
3 Insert anchors



4 Attach the mount

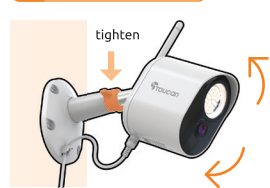


5 Attach the Security Light Camera



* Do not force or remove the antenna

6 Tighten the mount



Tools Needed



For detailed setup procedure, please refer to the Toucan website (www.ToucanSmartHome.com) or scan the QR code.