

Regulations & Compliance

FCC STATEMENT

Warning: Changes or modifications to this unit not expressly approved by the party responsible for compliance could void the user's authority to operate the equipment.

NOTE: This equipment has been tested and found to comply with the limits for a Class B digital device, pursuant to Part 15 of the FCC Rules. These limits are designed to provide reasonable protection against harmful interference in a residential installation. This equipment generates, uses and can radiate radio frequency energy and, if not installed and used in accordance with the instructions, may cause harmful interference to radio communications.

However, there is no guarantee that interference will not occur in a particular installation. If this equipment does cause harmful interference to radio or television reception, which can be determined by turning the equipment off and on, the user is encouraged to try to correct the interference by one or more of the following measures:

- Reorient or relocate the receiving antenna.
- Increase the separation between the equipment and receiver.
- Connect the equipment into an outlet on a circuit different from that to which the receiver is connected.
- Consult the dealer or an experienced radio/ TV technician for help.



This device complies with Part 15 of the FCC Rules. Operation is subject to the following two conditions:

- (1) This device may not cause harmful interference.
- (2) This device must accept any interference received, including interference that may cause undesired operation.

ISED Regulatory Compliance:

This device contains licence-exempt transmitter(s)/receiver(s) that comply with Innovation, Science and Economic Development Canada's licence-exempt RSS(s). Operation is subject to the following two conditions:

1. This device may not cause interference.
2. This device must accept any interference, including interference that may cause undesired operation of the device.

L'émetteur/récepteur exempt de licence contenu dans le présent appareil est conforme aux CNR d'Innovation, Sciences et Développement économique Canada applicables aux appareils radio exempts de licence. L'exploitation est autorisée aux deux conditions suivantes:

1. L'appareil ne doit pas produire de brouillage;
2. L'appareil doit accepter tout brouillage radioélectrique subi, même si le brouillage est susceptible d'en compromettre le fonctionnement.

RF Exposure Compliance:

This equipment complies with FCC/IC radiation exposure limits set forth for an uncontrolled environment. This equipment should be installed and operated with minimum distance 20cm between the radiator and your body.

Cet équipement est conforme aux limites d'exposition aux radiations FCC/IC établies pour un environnement non contrôlé. Cet équipement doit être installé et utilisé avec une distance minimale de 20 cm entre le radiateur et votre corps.



For additional info, visit our website at www.toucan.solutions.

Follow us for the latest updates:

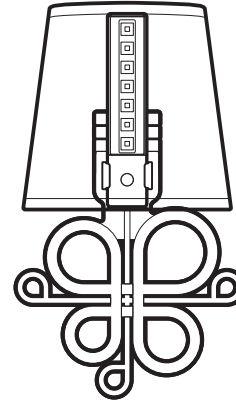


©2018 VuPoint Solutions Inc. All rights reserved.

The Toucan logo and Toucan are trademarks or registered trademarks of VuPoint Solutions Inc. in the United States and other countries. App store is a service mark of Apple Inc. Android App on Google Play logo is a trademark of Google Inc. Use of this trademark is subject to Google permission. All trademarks remain the property of their respective holders, and are used only to directly describe the products being provided. These trademark holders are not affiliated with VuPoint Solutions Inc. They do not sponsor or endorse VuPoint Solutions Inc. products or services. 06152018 Specifications subject to change without prior notice.

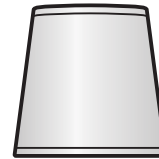


Thank you for choosing Toucan Smart Sconce Light

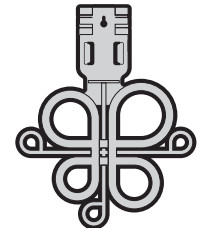


Toucan Smart Sconce Light is a smart personal wireless lighting system that offers a characteristic lighting experience for you to control anywhere and enjoy a sense of well-being, day or night.

Items Included



Lampshade (2 pcs)



Ornament (2 pcs)



Smart Light Bar
TLB100WU
(2 pcs)

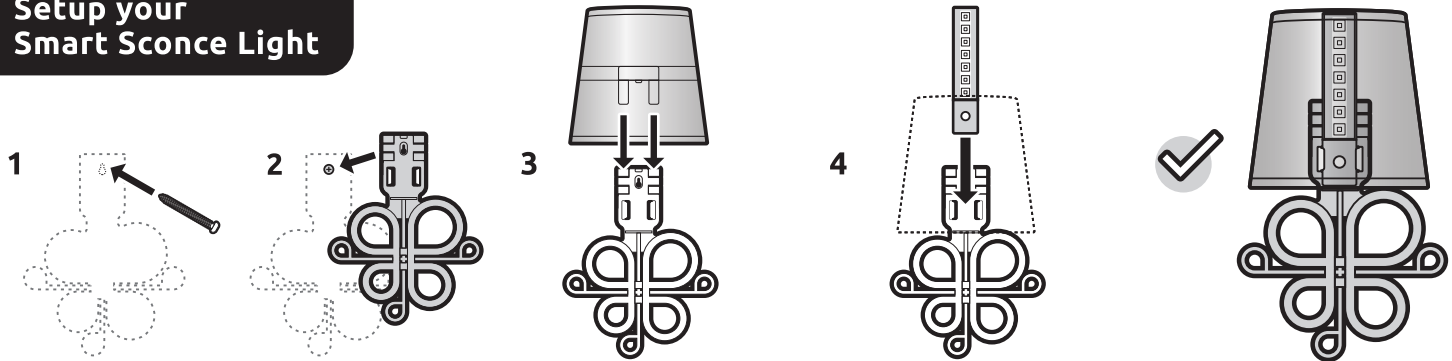


AA Alkaline
Battery
(12 pcs)

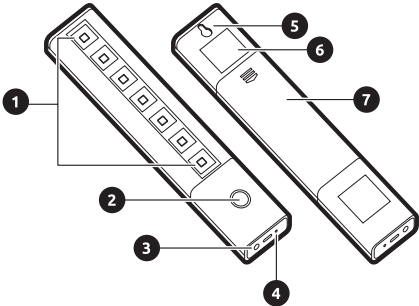


Screw Set
(4 sets)

Setup your Smart Sconce Light

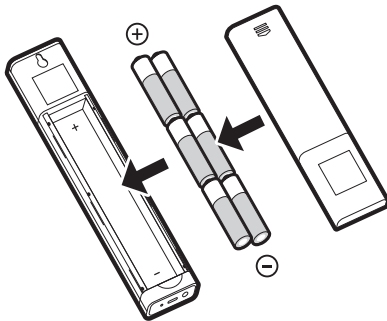


Get to know your Smart Sconce Light



1. LED Lights
2. Power Button
3. Set Button
4. Status Indicator
5. Hanging Hook
6. Light Bar QR Code
7. Battery Compartment

Power up your Smart Sconce Light



Insert Batteries
(6 x AA)

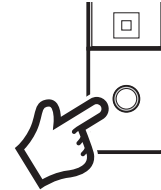
CAUTION:

1. Do not mix batteries. To prevent equipment damage, and possible injury, never mix batteries with different chemistries or voltages in the equipment at the same time.
2. Consumed batteries need to be disposed of properly. Follow the disposal instructions on the battery package. Batteries should be recycled or disposed of as per state and local guidelines. Battery selling retailers provide special containers for environmentally friendly disposal.
3. Remove batteries from unit for long term storage to prevent damage from battery leakage.

Control your Smart Sconce Light

Manual Control

- Press Power button to turn on the light (auto shut off after 3 hours)
- Press again to turn off



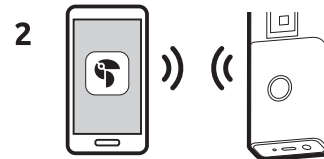
Smart & Voice Control



Download Toucan App

Scan QR code or visit
toucan.solutions/app

Available at Apple® App Store®
and Google Play™



Follow the app instruction
to setup



- Ready to control from app at anytime
- For voice control, set up connection with the compatible Voice Assistant device accordingly