



FCC Part 15B TEST REPORT

Report No.: STS2201019E04

Issued for

Shanghai Unihertz E-Commerce Co., Ltd

Room 308, Building C, 508 Chundong Rd, Minhang district
Shanghai, China 201108

Product Name:	Smart phone
Brand Name:	Unihertz
Model Name:	Titan Slim
Series Model:	N/A
FCC ID:	2AK6CTITANSLIM
Test Standard:	FCC 47 CFR Part 15: Subpart B

Any reproduction of this document must be done in full. No single part of this document may be reproduced without permission from STS, All Test Data Presented in this report is only applicable to presented Test sample.





TEST RESULT CERTIFICATION

Applicant's Name: Shanghai Unihertz E-Commerce Co., Ltd
Address.....: Room 308, Building C, 508 Chundong Rd, Minhang district
 Shanghai, China 201108
Manufacture's Name: OBLUE Communication Technology Co.,Ltd.
Address.....: 7th floor, building B, dayou industrial and trade industrial park,
 heping yonghe road, fuyong street, baoan district, Shenzhen, China
Product Description:
Product Name: Smart phone
Brand Name.....: Unihertz
Model Name: Titan Slim
Series Model: N/A
Standards.....: FCC 47 CFR Part 15: Subpart B
Test Procedure.....: ANSI C63.4-2014

This device described above has been tested by STS, and the test results show that the equipment under test (EUT) is in compliance with the FCC requirements. And it is applicable only to the tested sample identified in the report.

This report shall not be reproduced except in full, without the written approval of STS, this document may be altered or revised by STS, personal only, and shall be noted in the revision of the document.

Date of Test..... :
Date of Receipt of Test Item..... : 12 Jan. 2022
Date of Performance of Tests : 12 Jan. 2022 ~ 21 Jan. 2022
Date of Issue..... : 21 Jan. 2022
Test Result : **Pass**

Testing Engineer : Jane Zeng
 (Jane Zeng)

Technical Manager : Bulun
 (Bulun)

Authorized Signatory : Vita Li
 (Vita Li)





Table of Contents

1. SUMMARY OF THE TEST RESULTS	5
1.1 TEST FACTORY	5
1.2 MEASUREMENT UNCERTAINTY	5
2. GENERAL INFORMATION	6
2.1 GENERAL DESCRIPTION OF THE EUT	6
2.2 DESCRIPTION OF THE TEST MODES	8
2.3 DESCRIPTION OF THE TEST SETUP	10
2.4 EQUIPMENTS LIST FOR ALL TEST ITEMS	11
3. EMC EMISSION TEST	12
3.1 CONDUCTED EMISSION MEASUREMENT	12
3.2 RADIATED EMISSION MEASUREMENT	16





Revision History

Rev.	Issue Date	Report No.	Effect Page	Contents
00	21 Jan. 2022	STS2201019E04	ALL	Initial Issue





1. SUMMARY OF THE TEST RESULTS

Test procedures according to the technical standards:

EMISSION			
Standard	Item	Result	Remarks
FCC 47 CFR Part 15 Subpart B	Conducted Emission	PASS	Meet Class B limit
	Radiated Emission	PASS	Meet Class B limit

NOTE:

(1) N/A=Not Applicable.

1.1 TEST FACTORY

Company Name:	SHENZHEN STS TEST SERVICES CO.,LTD.
Address:	A 1/F, Building B, Zhuoke Science Park, No.190 Chongqing Road, HepingShequ, Fuyong Sub-District, Bao'an District, Shenzhen, Guang Dong, China
Telephone:	+86-755 3688 6288
Fax:	+86-755 3688 6277
Registration No.:	FCC test Firm Registration Number: 625569
	IC test Firm Registration Number: 12108A
	A2LA Certificate No.: 4338.01

1.2 MEASUREMENT UNCERTAINTY

The reported uncertainty of measurement $y \pm U$, where expanded uncertainty U is based on a standard uncertainty multiplied by a coverage factor of $k=2$, providing a level of confidence of approximately 95 %.

No.	Item	Uncertainty
1	Conducted Emission (9KHz-30MHz)	$\pm 2.73\text{dB}$
2	All emissions,radiated(<1G) 30MHz-1000MHz	$\pm 4.09\text{dB}$
3	All emissions,radiated(>1G) 1GHz-6GHz	$\pm 4.92\text{dB}$
4	All emissions,radiated(>1G) 6GHz-18GHz	$\pm 5.49\text{dB}$



2. GENERAL INFORMATION

2.1 GENERAL DESCRIPTION OF THE EUT

Product Name	Smart phone	
Brand Name	Unihertz	
Model Name	Titan Slim	
Series Model	N/A	
Model Difference	N/A	
Frequency Bands	GSM	850: 824-849 MHz 1900: 1710-1785 MHz
	WCDMA	Band 2: 1850-1910 MHz Band 4: 1710-1910 MHz Band 5: 824-849 MHz BC0: 824.7-848.31 MHz BC1: 1851.25-1908.75 MHz
	LTE	Band 2:1850-1910 MHz Band 4: 1710-1755MHz Band 5: 824-849MHz Band 7: 2500-2570MHz Band 12: 699-716MHz Band 13:777-787 MHz Band 17:704-716 MHz Band 25:1850-1915 MHz Band 26:814-824 MHz Band 38: 2570-2620MHz Band 40:2305-2315 MHz Band 41:2496-2690 MHz Band 66:1710-1780MHz
	Bluetooth	2402 ~ 2480 MHz
	WLAN	2.4G 802.11b/g/n(20MHz): 2412~2472 MHz 802.11n(40MHz): 2422~ 2462 MHz 5G 802.11a/n/ac (20MHz): 5180~5700MHz 802.11n/ac(40MHz):5190~5670MHz 802.11ac(80MHz):5210~5610MHz 5.8G 802.11a/n/ac (20MHz): 5745~5825MHz 802.11n /ac(40MHz):5755~5795MHz 802.11ac (80MHz):5775MHz
	GPS	1575.42MHz
	FM	87.5-108MHz
	NFC	13.56 MHz
	GLONASS	1602 MHz
	BDS	1561.098MHz



Modulation Mode	GSM	GMSK for GSM/GPRS; GMSK and 8PSK for EDGE
	WCDMA	WCDMA: QPSK; HSDPA:QPSK/16QAM; HSUPA:BPSK
	LTE	QPSK/16QAM
	Bluetooth	BT(1Mbps): GFSK BT EDR(2Mbps): $\pi/4$ -DQPSK BT EDR(3Mbps): 8DPSK
	BLE	GFSK
	WLAN	2.4G 802.11b(DSSS):CCK,DQPSK,DBPSK 802.11g(OFDM):BPSK,QPSK,16-QAM,64-QAM 802.11n(OFDM):BPSK,QPSK,16-QAM,64-QAM 5G/5.8G 802.11a(OFDM):BPSK,QPSK,16-QAM,64-QAM 802.11n(OFDM):BPSK,QPSK,16-QAM,64-QAM 802.11ac(OFDM): BPSK,QPSK,16-QAM,64-QAM,256-QAM
	GPS	BPSK
	FM	FM
	NFC	ASK
	GLONASS	FDMA
	BDS	QPSK
Rating	Input: AC 100-240V 50/60Hz 0.3A Output:DC 5V 2A 10.0W	
Battery	Rated Voltage:3.85V Charge Limit Voltage:4.4V Capacity: 4100mAh	
Hardware Version Number	G83_V1.2	
Software Version Number	Titan Slim_20211022	

Note: For a more detailed features description, please refer to the manufacturer's specifications or the User's Manual.



2.2 DESCRIPTION OF THE TEST MODES

To investigate the maximum EMI emission characteristics generates from EUT, the test system was pre-scanning tested base on the consideration of following EUT operation mode or test configuration mode which possibly have effect on EMI emission level. Each of these EUT operation mode(s) or test configuration mode(s) mentioned above was evaluated respectively.

Pretest Mode	Description
Mode 1	PC+USB Transmitting+SD Card
Mode 2	Adapter + Rear camera on + BT Link+ GPS Rx
Mode 3	Adapter + Front-facing camera on + BT Link+ GPS Rx
Mode 4	GSM850 Link + Adapter + USB cable + BT Link + GPS Rx
Mode 5	DCS1900 Idle + Adapter + USB cable + BT Link + GPS Rx
Mode 6	WCDMA B2 Link + Adapter + USB cable + BT Link + WLAN Link + GPS Rx
Mode 7	WCDMA B4 Link + Adapter + USB cable + BT Link + WLAN Link + GPS Rx
Mode 8	WCDMA B5 Link + Adapter + USB cable + BT Link + WLAN Link + GPS Rx
Mode 9	LTE B2 Link + Adapter + USB cable + BT Link + WLAN Link + GPS Rx
Mode 10	LTE B4 Link + Adapter + USB cable + BT Link + WLAN Link + GPS Rx
Mode 11	LTE B5 Link + Adapter + USB cable + BT Link + WLAN Link + GPS Rx
Mode 12	LTE B7 Link + Adapter + USB cable + BT Link + WLAN Link + GPS Rx
Mode 13	LTE B12 Link + Adapter + USB cable + BT Link + WLAN Link + GPS Rx
Mode 14	LTE B13 Link + Adapter + USB cable + BT Link + WLAN Link + GPS Rx
Mode 15	LTE B17 Link + Adapter + USB cable + BT Link + WLAN Link + GPS Rx
Mode 16	LTE B25 Link + Adapter + USB cable + BT Link + WLAN Link + GPS Rx
Mode 17	LTE B26 Link + Adapter + USB cable + BT Link + WLAN Link + GPS Rx
Mode 18	LTE B38 Link + Adapter + USB cable + BT Link + WLAN Link + GPS Rx
Mode 19	LTE B40 Link + Adapter + USB cable + BT Link + WLAN Link + GPS Rx
Mode 20	LTE B41 Link + Adapter + USB cable + BT Link + WLAN Link + GPS Rx
Mode 21	LTE B66 Link + Adapter + USB cable + BT Link + WLAN Link + GPS Rx

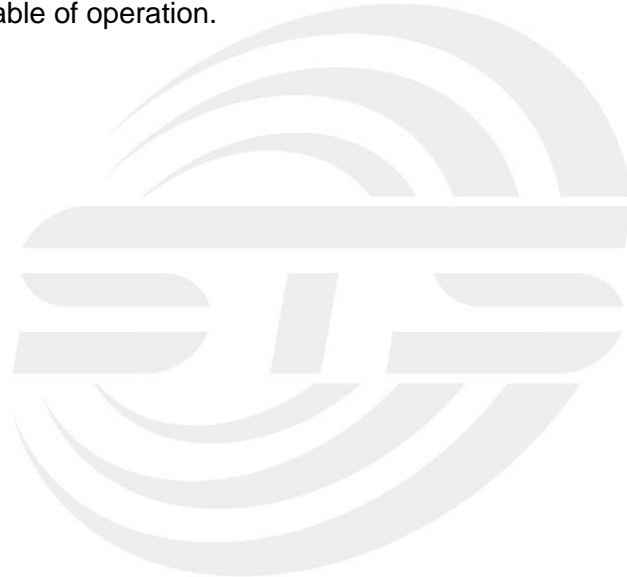


For Conducted Test	
Final Test Mode	Description
Mode 1	PC+USB Transmitting+SD Card

For Radiated Test	
Final Test Mode	Description
Mode 1	PC+USB Transmitting+SD Card

Note:

1. For conducted emission test, test mode 1 was the worst case and only this mode was presented in this report.
2. For radiated emission test, test mode 1 was the worst case and only this mode was presented in this report.
3. We have be tested for all avaiable U.S. voltage and frequencies (For 120V, 50/60Hz) for which the device is capable of operation.





2.3 DESCRIPTION OF THE TEST SETUP

The EUT has been tested with associated equipment below and the test setup please refer to appendix 1 - test setup.

Necessary accessories

Item	Equipment	Mfr/Brand	Model/Type No.	Length	Note
	USB Cable	N/A	N/A	100cm	NO

Support units

Item	Equipment	Mfr/Brand	Model/Type No.	Length	Note
	Notebook Adapter	DELL	HSTNN-CA15	N/A	N/A
	Personal computer	DELL	VOSTRO.3800	N/A	N/A
	Keyboard	Acer	SK-9624	N/A	N/A
	Mouse	HP	MODGUO	N/A	N/A
	Printer	LENOVO	LJ2400L	N/A	N/A
	DC Cable	N/A	N/A	120cm	NO
	USB Cable	N/A	N/A	110cm	NO
	USB Cable	N/A	N/A	110cm	NO
	USB Cable	N/A	N/A	110cm	NO

Note:

- (1) For detachable type I/O cable should be specified the length in cm in 『Length』 column.
- (2) “YES” is means “with core”; “NO” is means “without core”.



2.4 EQUIPMENTS LIST FOR ALL TEST ITEMS

The EUT has been tested as an independent unit together with other necessary accessories or support units. The following support units or accessories were used to form a representative test configuration during the tests.

Radiation Test equipment

Kind of Equipment	Manufacturer	Type No.	Serial No.	Last Calibration	Calibrated Until
EMI Test Receiver	R&S	ESCI	101427	2021.09.30	2022.09.29
Bi-log Antenna	TESEQ	CBL6111D	45873	2021.10.08	2023.10.07
Horn Antenna	SCHWARZB ECK	BBHA 9120D	1343	2020.10.12	2022.10.11
Pre-amplifier(1-26.5 G)	Agilent	8449B	3008A02383	2021.10.09	2022.10.08
Pre-amplifier(0.1M-3 GHz)	EM	EM330	060665	2021.10.09	2022.10.08
Spectrum Analyzer	Agilent	N9020A	MY49100060	2021.09.30	2022.09.29
RE Cable (9K-1G)	N/A	R01	N/A	2021.10.09	2022.10.08
RE Cable (1-26G)	N/A	R02	N/A	2021.10.09	2022.10.08
Temperature & Humidity	Mieo	HH660	N/A	2021.10.09	2022.10.08
Horn Antenna(18-40G)	A-INFO	LB-180400-KF	J211020657	2020.10.12	2022.10.11
Testing Software	EZ-EMC(Ver.STSLAB-03A1 RE)				

Conduction Test equipment

Kind of Equipment	Manufacturer	Type No.	Serial No.	Last Calibration	Calibrated Until
EMI Test Receiver	R&S	ESCI	101427	2021.09.30	2022.09.29
LISN	R&S	ENV216	101242	2021.09.30	2022.09.29
LISN	ETS	3810/2NM	00023625	2021.09.30	2022.09.29
Absorbing Clamp	R&S	MDS-21	100668	2021.04.11	2022.04.10
CE Cable	N/A	C01	N/A	2021.09.30	2022.09.29
Temperature & Humidity	Mieo	HH660	N/A	2021.10.09	2022.10.08
Testing Software	EZ-EMC(Ver.STSLAB-03A1 CE)				



3. EMC EMISSION TEST

3.1 CONDUCTED EMISSION MEASUREMENT

3.1.1 POWER LINE CONDUCTED EMISSION Limits

FREQUENCY (MHz)	<input type="checkbox"/> Class A (dB μ V)		<input checked="" type="checkbox"/> Class B (dB μ V)	
	Quasi-peak	Average	Quasi-peak	Average
0.15 ~ 0.5	79.00	66.00	66 - 56 *	56 - 46 *
0.5 ~ 5	73.00	60.00	56.00	46.00
5 ~ 30	73.00	60.00	60.00	50.00

Note:

- (1) The tighter limit applies at the band edges.
- (2) The limit of " * " marked band means the limitation decreases linearly with the logarithm of the frequency in the range.

The following table is the setting of the receiver

Receiver Parameters	Setting
Attenuation	10 dB
Start Frequency	0.15 MHz
Stop Frequency	30 MHz
IF Bandwidth	9 kHz

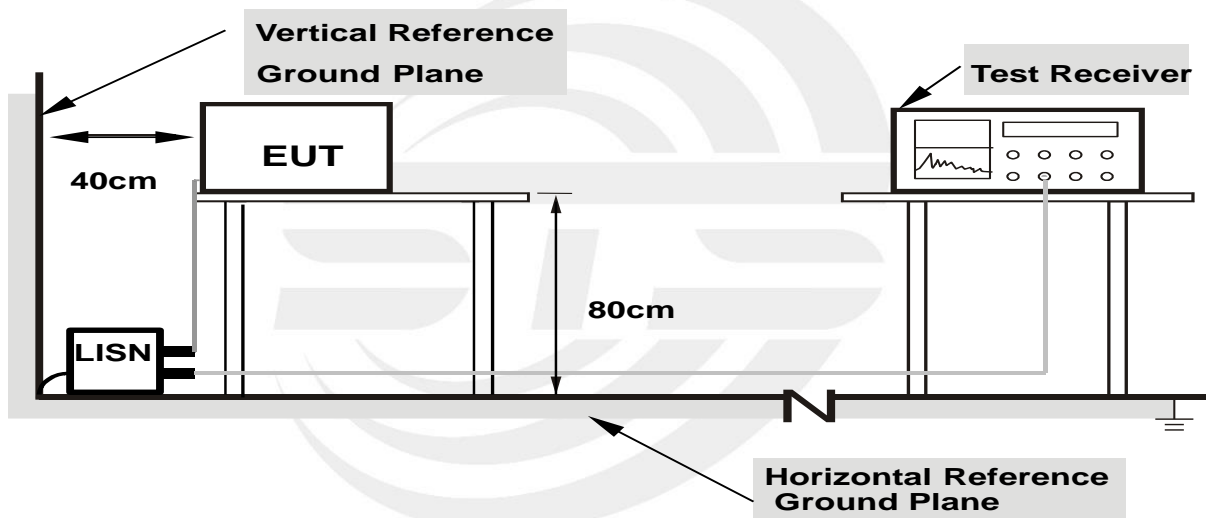
3.1.2 TEST PROCEDURE

- a. The EUT was placed 0.4 meters from the conducting wall of the shielded room with EUT being connected to the power mains through a line impedance stabilization network (LISN). Other support units were connected to the power mains through another LISN. The two LISNs provide 50 Ohm/ 50uH of coupling impedance for the measuring instrument.
- b. Interconnecting cables that hang closer than 40 cm to the ground plane shall be folded back and forth in the center forming a bundle 30 to 40 cm long.
- c. I/O cables that are not connected to a peripheral shall be bundled in the center. The end of the cable may be terminated, if required, using the correct terminating impedance. The overall length shall not exceed 1 m.
- d. For the actual test configuration, please refer to the related Item –EUT Test Photos.

3.1.3 DEVIATION FROM TEST STANDARD

No deviation

3.1.4 TEST SETUP



- Note: 1.Support units were connected to second LISN.**
2.Both of LISNs (AMN) are 80 cm from EUT and at least 80 from other units and other metal planes

3.1.5 EUT OPERATING CONDITIONS

The EUT was configured for testing in a typical fashion (as a customer would normally use it). The EUT has been programmed to continuously transmit during test. This operating condition was tested and used to collect the included data.



3.1.6 TEST RESULTS

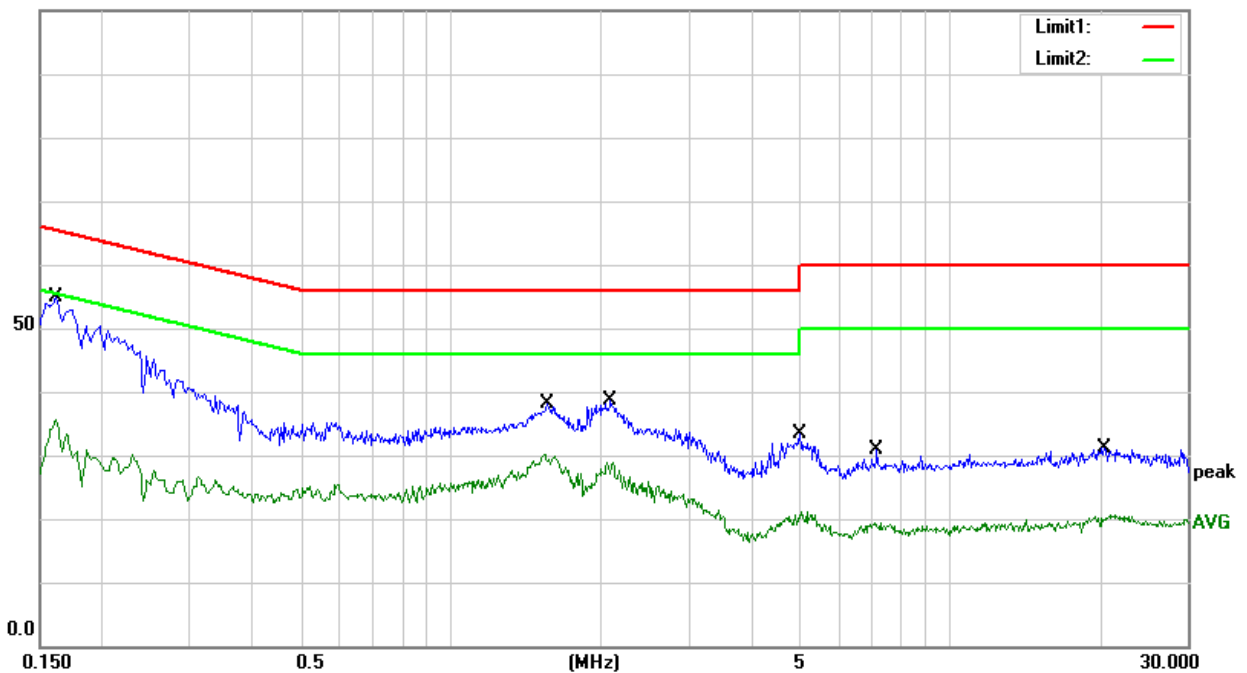
Temperature:	26.1°C	Relative Humidity:	60%
Phase:	L	Test Mode:	Mode 1
Test Voltage:	AC 120V/60Hz	Test Date:	2022.01.13

No.	Frequency (MHz)	Reading (dBUV)	Correct Factor (dB)	Result (dBUV)	Limit (dBUV)	Margin (dB)	Detector
1	0.1620	34.46	20.32	54.78	65.36	-10.58	QP
2	0.1620	15.30	20.32	35.62	55.36	-19.74	AVG
3	1.5660	17.76	20.35	38.11	56.00	-17.89	QP
4	1.5660	9.72	20.35	30.07	46.00	-15.93	AVG
5	2.0940	18.14	20.39	38.53	56.00	-17.47	QP
6	2.0940	8.52	20.39	28.91	46.00	-17.09	AVG
7	5.0100	12.82	20.53	33.35	60.00	-26.65	QP
8	5.0100	0.56	20.53	21.09	50.00	-28.91	AVG
9	7.1700	10.18	20.60	30.78	60.00	-29.22	QP
10	7.1700	-1.31	20.60	19.29	50.00	-30.71	AVG
11	20.4780	8.18	22.89	31.07	60.00	-28.93	QP
12	20.4780	-2.18	22.89	20.71	50.00	-29.29	AVG

Remark:

1. All readings are Quasi-Peak and Average values
2. Margin = Result (Result = Reading + Factor) – Limit
3. Factor = Insertion loss + Cable loss

100.0 dBUV





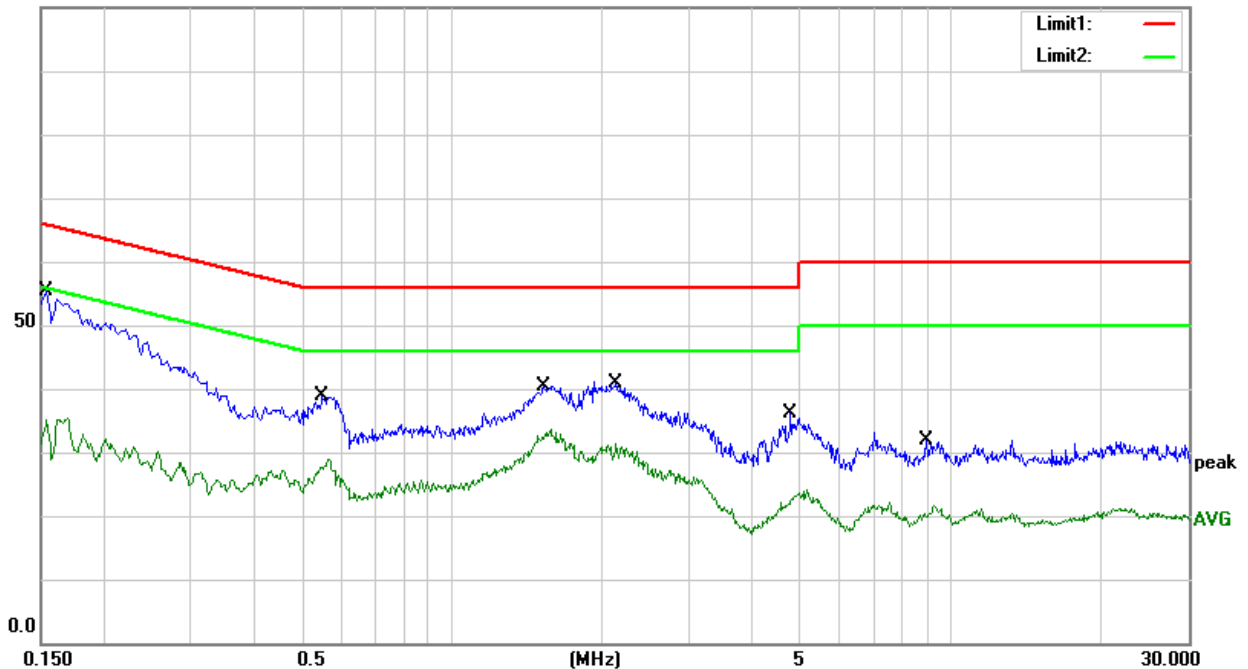
Temperature:	26.1°C	Relative Humidity:	60%
Phase:	N	Test Mode:	Mode 1
Test Voltage:	AC 120V/60Hz	Test Date:	2022.01.13

No.	Frequency (MHz)	Reading (dBuV)	Correct Factor (dB)	Result (dBuV)	Limit (dBuV)	Margin (dB)	Detector
1	0.1540	35.15	20.30	55.45	65.78	-10.33	QP
2	0.1540	12.54	20.30	32.84	55.78	-22.94	AVG
3	0.5500	18.33	20.46	38.79	56.00	-17.21	QP
4	0.5500	8.33	20.46	28.79	46.00	-17.21	AVG
5	1.5340	19.94	20.35	40.29	56.00	-15.71	QP
6	1.5340	13.40	20.35	33.75	46.00	-12.25	AVG
7	2.1420	20.36	20.39	40.75	56.00	-15.25	QP
8	2.1420	10.95	20.39	31.34	46.00	-14.66	AVG
9	4.7940	15.54	20.53	36.07	56.00	-19.93	QP
10	4.7940	3.58	20.53	24.11	46.00	-21.89	AVG
11	8.9180	11.02	20.80	31.82	60.00	-28.18	QP
12	8.9180	1.35	20.80	22.15	50.00	-27.85	AVG

Remark:

1. All readings are Quasi-Peak and Average values
2. Margin = Result (Result = Reading + Factor) – Limit
3. Factor = Insertion loss + Cable loss

100.0 dBuV





3.2 RADIATED EMISSION MEASUREMENT

3.2.1 RADIATED EMISSION LIMITS

Below 1 GHz

Measurement Method and Applied Limits:

ANSI C63.4:

Frequency (MHz)	<input type="checkbox"/> Class A		<input checked="" type="checkbox"/> Class B
	Field strength (dBuV/m) (at 10m)	Field strength (dBuV/m) (at 3m)	Field strength (dBuV/m) (at 3m)
30 ~ 88	39	49	40
88 ~ 216	43.5	53.5	43.5
216 ~ 960	46	56	46
Above 960	49.5	59.5	54

Above 1 GHz

Measurement Method and Applied Limits:

ANSI C63.4:

Frequency (MHz)	<input type="checkbox"/> Class A				<input checked="" type="checkbox"/> Class B	
	(dBuV/m) (at 3m)		(dBuV/m) (at 10m)		(dBuV/m) (at 3m)	
	Peak	Average	Peak	Average	Peak	Average
Above 1000	80	60	69.5	49.5	74	54

Frequency Range of Radiated Disturbance Measurement

Highest frequency generated or Upper frequency of measurement used in the device or on which the device operates or tunes (MHz)	Range (MHz)
Below 1.705	30
1.705 ~ 108	1000
108 ~ 500	2000
500 ~ 1000	5000
Above 1000	5th harmonic of the highest frequency or 40 GHz, whichever is lower

Note:

- (1) The limit for radiated test was performed in the following: FCC PART 15B.
- (2) The tighter limit applies at the band edges.
- (3) Emission level (dBuV/m) = 20log Emission level (uV/m).



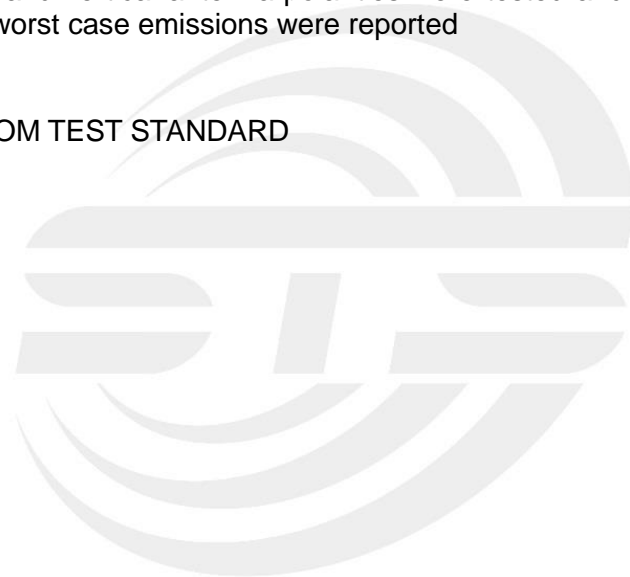
3.2.2 TEST PROCEDURE

- a. The EUT was placed on the top of a rotating table 0.8 meter above the ground at a 3 meter semi-anechoic chamber room. The table was rotated 360 degrees to determine the position of the highest radiation.
- b. EUT as the center to the edge of the auxiliary device, the distance from the maximum edge to the center of the antenna is 3 meter.
- c. The height of antenna is varied from 1 meter to 4 meter above the ground to determine the maximum value of the field strength. Both horizontal and vertical polarizations of the antenna are set to make the measurement.
- d. For each suspected emission, the EUT was arranged to its worst case and then the antenna was tuned to heights from 1 meter to 4 meter and the rotatable table was turned from 0 degrees to 360 degree to find the maximum reading.
- e. The test-receiver system was set to quasi-peak detect function and specified bandwidth with maximum hold mode when the test frequency is below 1GHz.
- f. For the actual test configuration, please refer to the related Item –EUT Test Photos.

Note: Both horizontal and vertical antenna polarities were tested and performed pretest to three orthogonal axis. The worst case emissions were reported

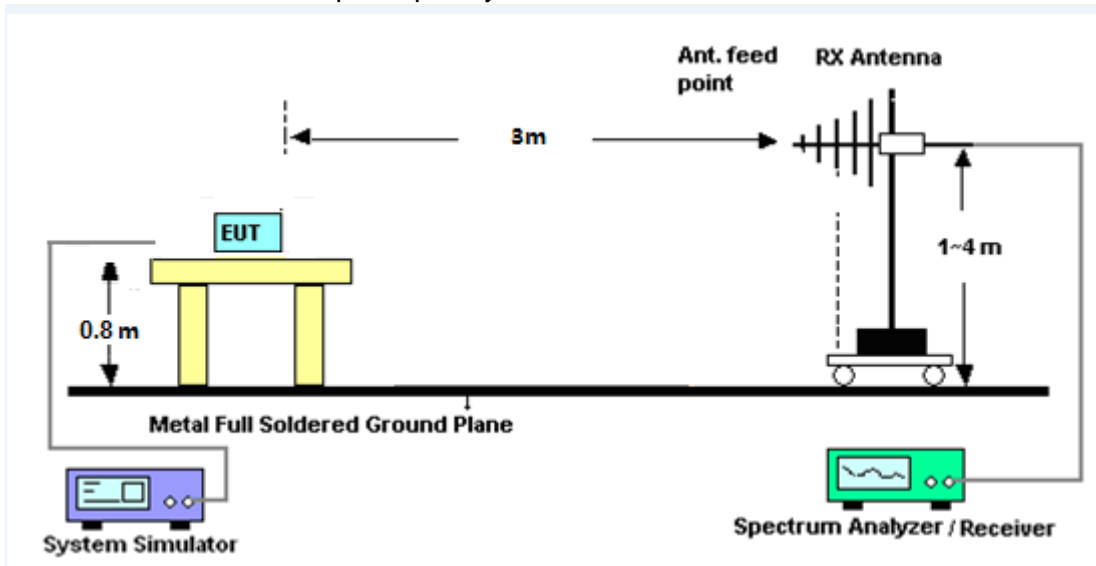
3.2.3 DEVIATION FROM TEST STANDARD

No deviation

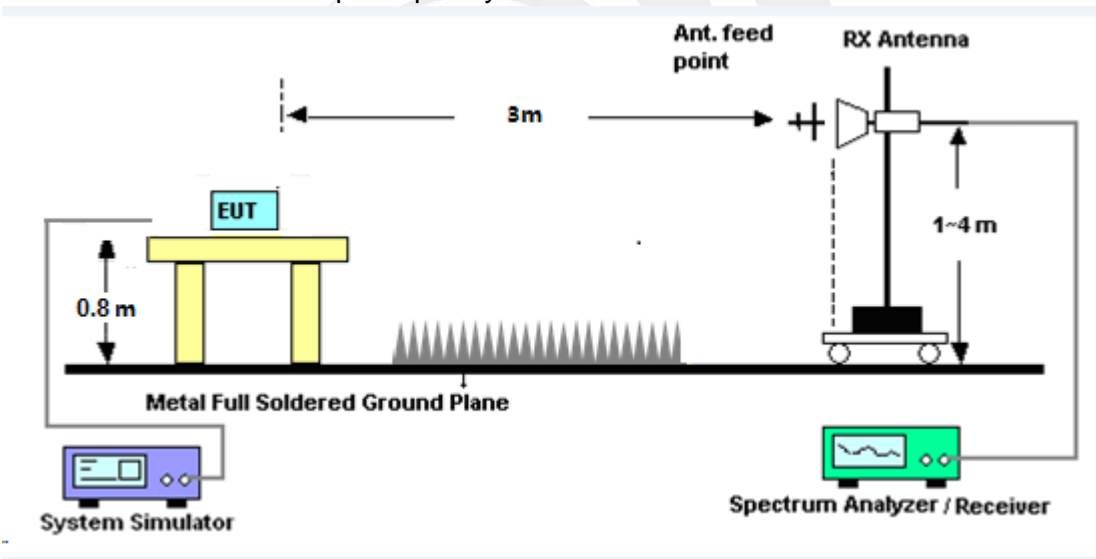


3.2.4 TEST SETUP

(A) Radiated Emission Test-Up Frequency 30MHz~1GHz



(B) Radiated Emission Test-Up Frequency Above 1GHz



3.2.5 EUT OPERATING CONDITIONS

The EUT tested system was configured as the statements of 2.4 described unless otherwise a special operating condition is specified in the following during the testing.



3.2.6 TEST RESULTS

30MHz - 1000MHz

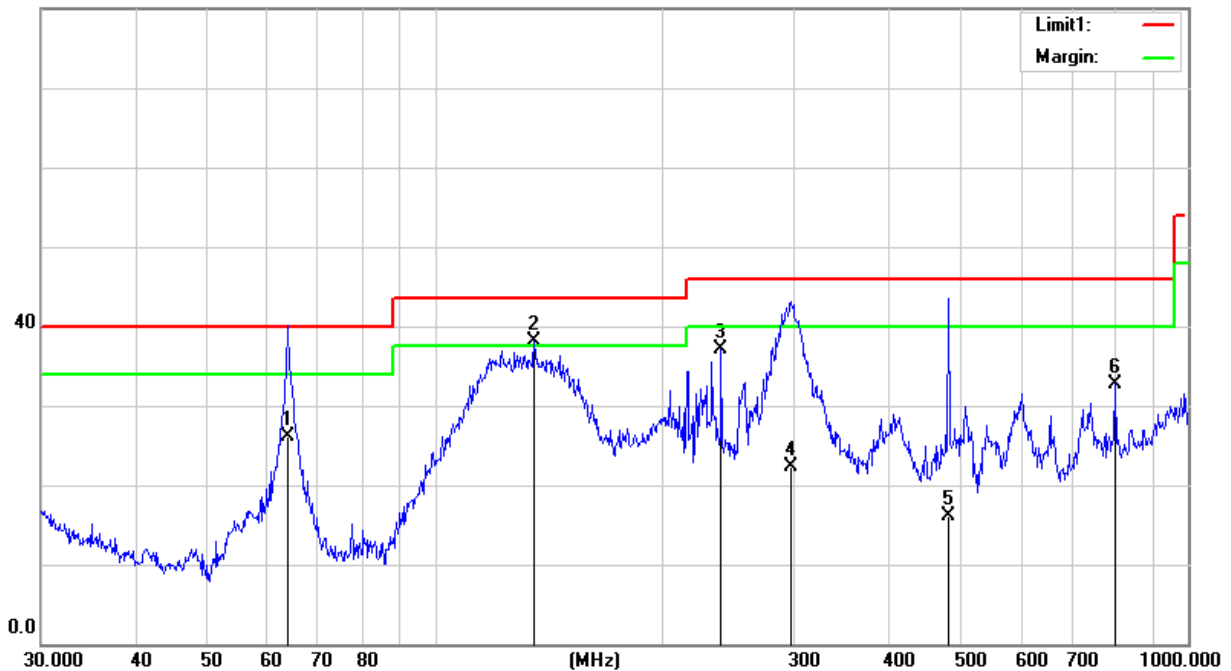
Temperature:	24.3°C	Relative Humidity:	47%
Phase:	Horizontal	Test Mode:	Mode 1
Test Voltage:	DC 5V	Test Date:	2022.01.12

No.	Frequency (MHz)	Reading (dBuV)	Correct Factor (dB)	Results (dBuV/m)	Limit (dBuV/m)	Margin (dB)	Detector
1	63.8988	51.97	-25.96	26.01	40.00	-13.99	QP
2	135.5062	56.53	-18.49	38.04	43.50	-5.46	QP
3	239.9873	56.44	-19.26	37.18	46.00	-8.82	QP
4	297.2241	38.74	-16.38	22.36	46.00	-23.64	QP
5	480.5276	27.18	-11.00	16.18	46.00	-29.82	QP
6	798.9797	37.57	-4.77	32.80	46.00	-13.20	QP

Remark:

1. All readings are Quasi-Peak
2. Margin = Result (Result = Reading + Factor) – Limit
3. Factor = Cable Loss + Antenna Factor - Amplifier Gain

80.0 dBuV/m





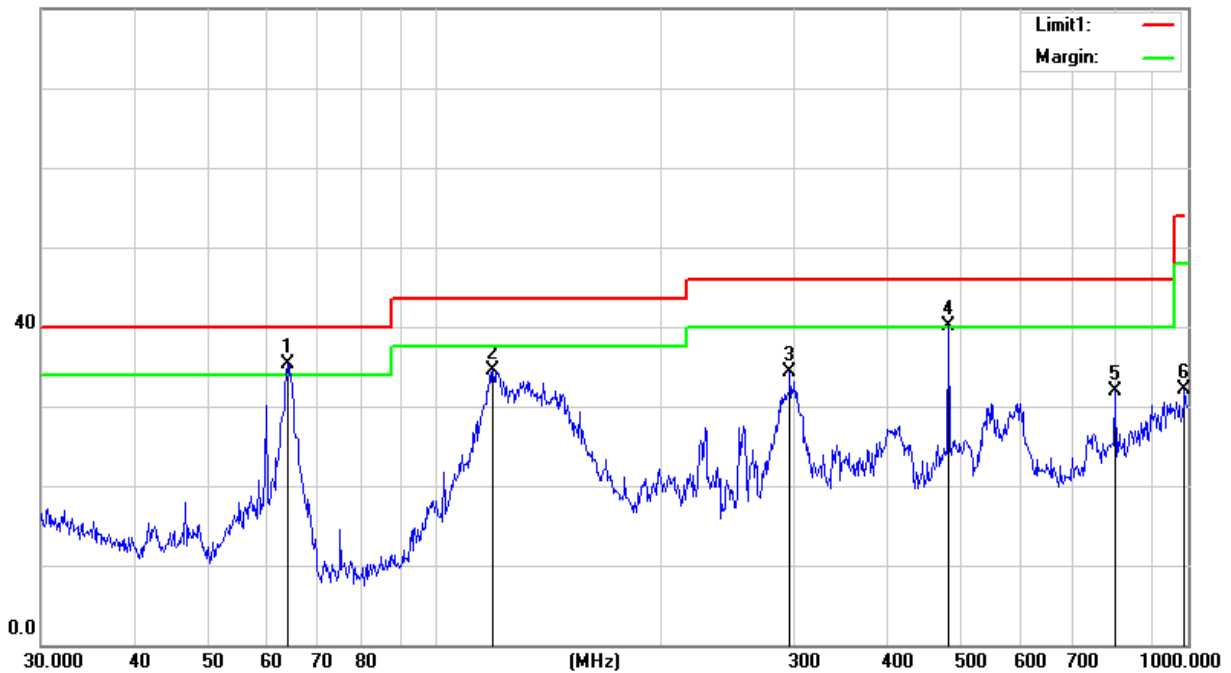
Temperature:	24.3°C	Relative Humidity:	47%
Phase:	Vertical	Test Mode:	Mode 1
Test Voltage:	DC 5V	Test Date:	2022.01.12

No.	Frequency (MHz)	Reading (dBuV)	Correct Factor (dB)	Results (dBuV/m)	Limit (dBuV/m)	Margin (dB)	Detector
1	63.7588	61.21	-25.96	35.25	40.00	-4.75	QP
2	119.4361	52.88	-18.32	34.56	43.50	-8.94	QP
3	296.1836	50.65	-16.43	34.22	46.00	-11.78	QP
4	480.5276	51.07	-11.00	40.07	46.00	-5.93	QP
5	798.9797	36.75	-4.77	31.98	46.00	-14.02	QP
6	989.5355	34.30	-2.14	32.16	54.00	-21.84	QP

Remark:

1. All readings are Quasi-Peak
2. Margin = Result (Result = Reading + Factor) – Limit
3. Factor = Cable Loss + Antenna Factor - Amplifier Gain

80.0 dBuV/m





(1 GHz - 18GHz)

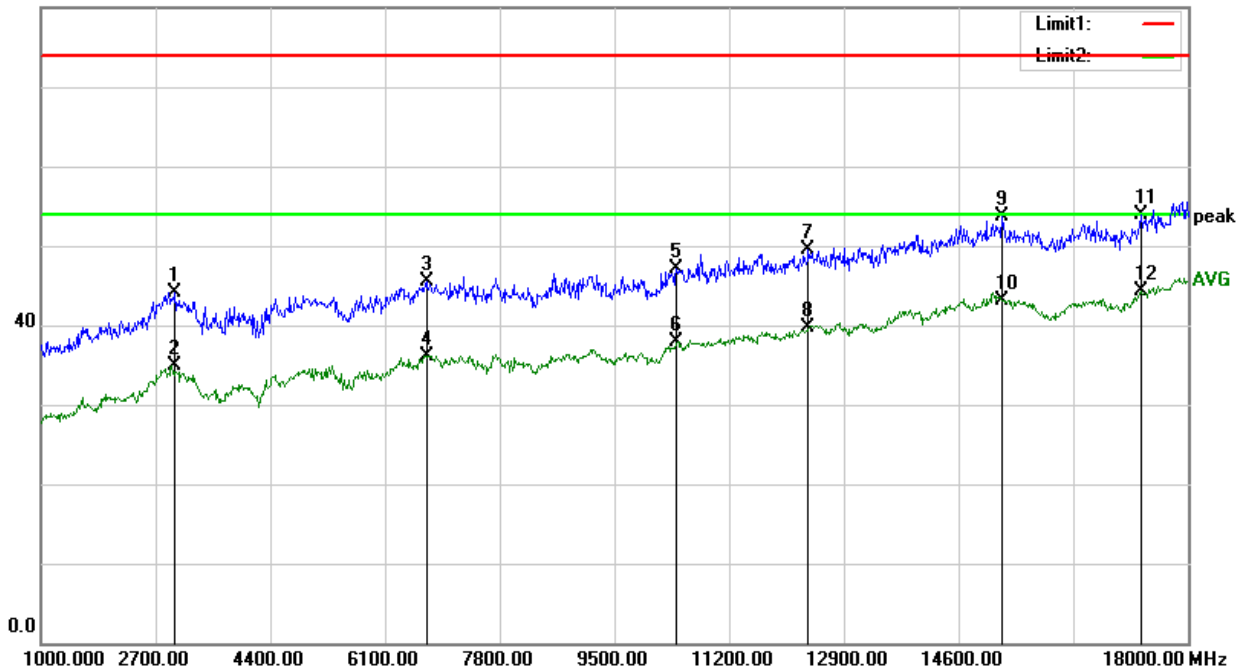
Temperature:	24.3°C	Relative Humidity:	47%
Phase:	Horizontal	Test Mode:	Mode 1
Test Voltage:	DC 5V	Test Date:	2022.01.12

No.	Frequency (MHz)	Reading (dBuV)	Correct Factor (dB)	Result (dBuV)	Limit (dBuV)	Margin (dB)	Remark
1	2989.000	41.83	2.19	44.02	74.00	-29.98	Peak
2	2989.000	32.64	2.19	34.83	54.00	-19.17	AVG
3	6712.000	35.29	10.26	45.55	74.00	-28.45	Peak
4	6712.000	25.93	10.26	36.19	54.00	-17.81	AVG
5	10418.000	33.45	13.57	47.02	74.00	-26.98	Peak
6	10418.000	24.28	13.57	37.85	54.00	-16.15	AVG
7	12381.500	34.09	15.36	49.45	74.00	-24.55	Peak
8	12381.500	24.27	15.36	39.63	54.00	-14.37	AVG
9	15254.500	36.15	17.62	53.77	74.00	-20.23	Peak
10	15254.500	25.54	17.62	43.16	54.00	-10.84	AVG
11	17311.500	32.89	20.96	53.85	74.00	-20.15	Peak
12	17311.500	23.29	20.96	44.25	54.00	-9.75	AVG

Remark:

1. All readings are Peak and Average values
2. Margin = Result (Result = Reading + Factor) - Limit
3. Factor = Cable Loss + Antenna Factor - Amplifier Gain

80.0 dBuV/m





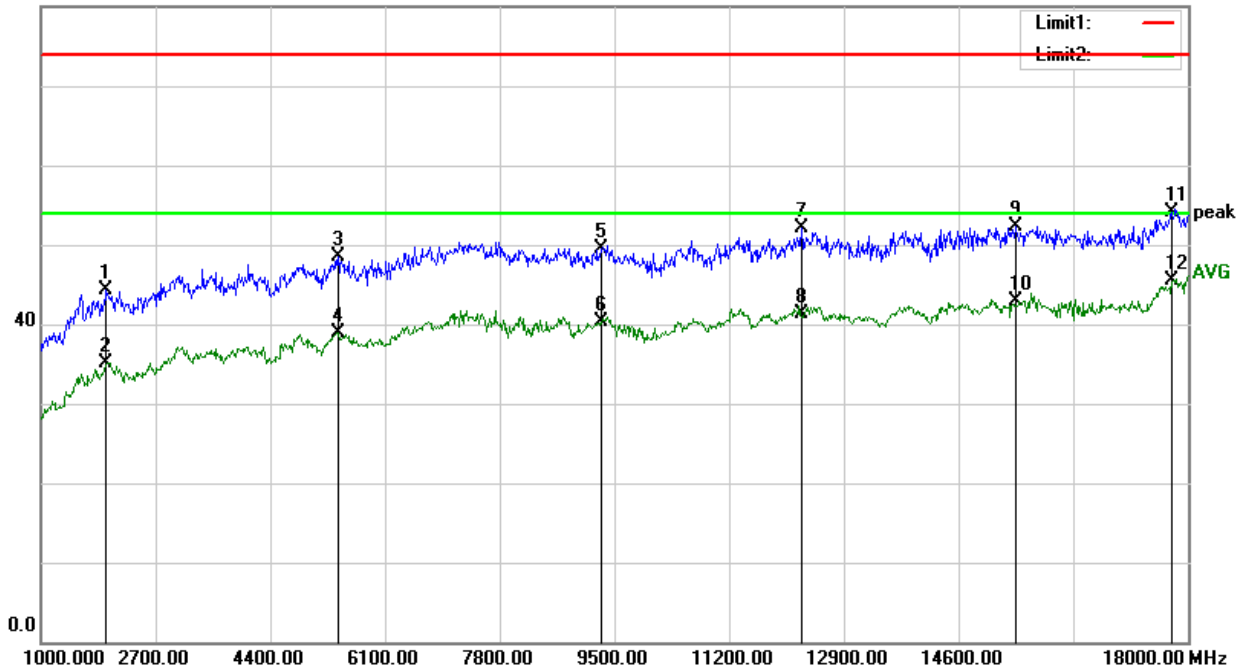
Temperature:	24.3°C	Relative Humidity:	47%
Phase:	Vertical	Test Mode:	Mode 1
Test Voltage:	DC 5V	Test Date:	2022.01.12

No.	Frequency (MHz)	Reading (dBuV)	Correct Factor (dB)	Result (dBuV)	Limit (dBuV)	Margin (dB)	Remark
1	1977.500	45.40	-1.19	44.21	74.00	-29.79	Peak
2	1977.500	36.20	-1.19	35.01	54.00	-18.99	AVG
3	5411.500	41.35	7.23	48.58	74.00	-25.42	Peak
4	5411.500	31.74	7.23	38.97	54.00	-15.03	AVG
5	9321.500	35.67	13.91	49.58	74.00	-24.42	Peak
6	9321.500	26.42	13.91	40.33	54.00	-13.67	AVG
7	12279.500	36.94	15.20	52.14	74.00	-21.86	Peak
8	12279.500	26.16	15.20	41.36	54.00	-12.64	AVG
9	15458.500	34.96	17.30	52.26	74.00	-21.74	Peak
10	15458.500	25.68	17.30	42.98	54.00	-11.02	AVG
11	17762.000	30.19	23.82	54.01	74.00	-19.99	Peak
12	17762.000	21.62	23.82	45.44	54.00	-8.56	AVG

Remark:

1. All readings are Peak and Average values
2. Margin = Result (Result = Reading + Factor) - Limit
3. Factor = Cable Loss + Antenna Factor - Amplifier Gain

80.0 dBuV/m





(18 GHz - 25GHz)

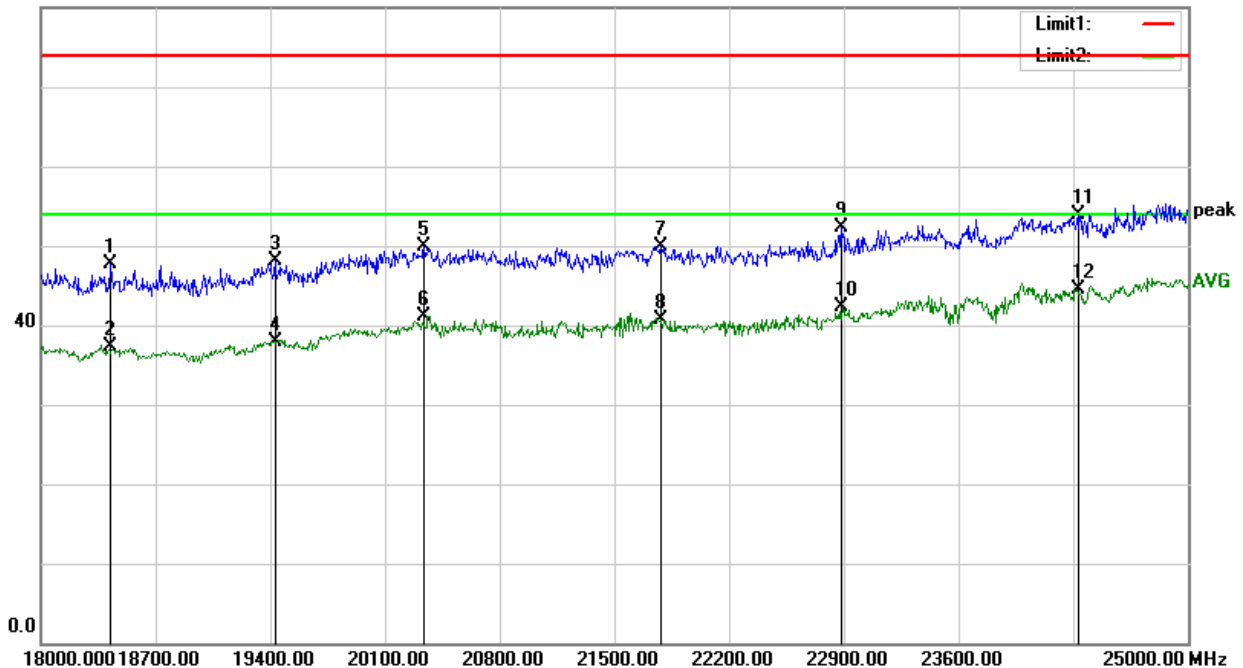
Temperature:	24.3°C	Relative Humidity:	47%
Phase:	Horizontal	Test Mode:	Mode 1
Test Voltage:	DC 5V	Test Date:	2022.01.12

No.	Frequency (MHz)	Reading (dBuV)	Correct Factor (dB)	Result (dBuV)	Limit (dBuV)	Margin (dB)	Remark
1	18427.000	22.74	24.87	47.61	74.00	-26.39	Peak
2	18427.000	12.53	24.87	37.40	54.00	-16.60	AVG
3	19428.000	22.68	25.33	48.01	74.00	-25.99	Peak
4	19428.000	12.65	25.33	37.98	54.00	-16.02	AVG
5	20338.000	25.09	24.84	49.93	74.00	-24.07	Peak
6	20338.000	16.33	24.84	41.17	54.00	-12.83	AVG
7	21787.000	25.36	24.64	50.00	74.00	-24.00	Peak
8	21787.000	16.12	24.64	40.76	54.00	-13.24	AVG
9	22886.000	27.73	24.52	52.25	74.00	-21.75	Peak
10	22886.000	17.84	24.52	42.36	54.00	-11.64	AVG
11	24328.000	28.98	24.92	53.90	74.00	-20.10	Peak
12	24328.000	19.49	24.92	44.41	54.00	-9.59	AVG

Remark:

1. All readings are Peak and Average values
2. Margin = Result (Result = Reading + Factor) – Limit
3. Factor = Cable Loss + Antenna Factor - Amplifier Gain

80.0 dBuV/m





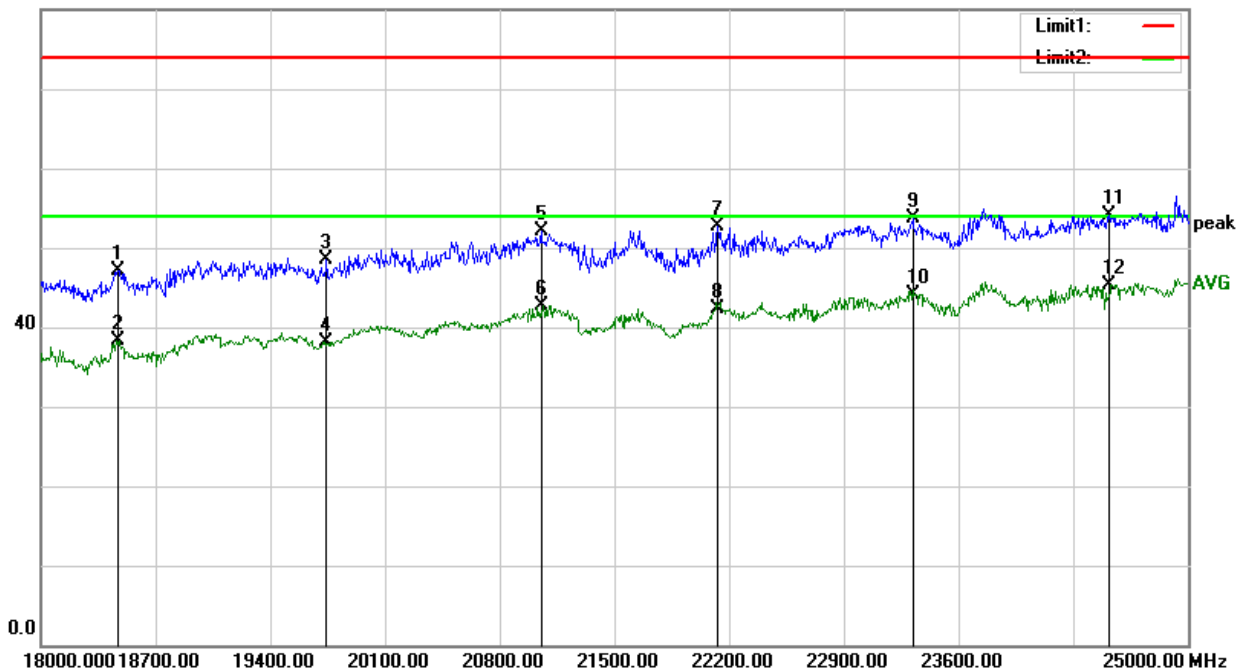
Temperature:	24.3°C	Relative Humidity:	47%
Phase:	Vertical	Test Mode:	Mode 1
Test Voltage:	DC 5V	Test Date:	2022.01.12

No.	Frequency (MHz)	Reading (dBuV)	Correct Factor (dB)	Result (dBuV)	Limit (dBuV)	Margin (dB)	Remark
1	18469.000	22.37	24.80	47.17	74.00	-26.83	Peak
2	18469.000	13.49	24.80	38.29	54.00	-15.71	AVG
3	19743.000	23.70	24.74	48.44	74.00	-25.56	Peak
4	19743.000	13.46	24.74	38.20	54.00	-15.80	AVG
5	21052.000	27.13	24.89	52.02	74.00	-21.98	Peak
6	21052.000	17.86	24.89	42.75	54.00	-11.25	AVG
7	22130.000	28.14	24.53	52.67	74.00	-21.33	Peak
8	22130.000	17.85	24.53	42.38	54.00	-11.62	AVG
9	23320.000	29.09	24.67	53.76	74.00	-20.24	Peak
10	23320.000	19.52	24.67	44.19	54.00	-9.81	AVG
11	24517.000	29.15	24.96	54.11	74.00	-19.89	Peak
12	24517.000	20.27	24.96	45.23	54.00	-8.77	AVG

Remark:

1. All readings are Peak and Average values
2. Margin = Result (Result = Reading + Factor) – Limit
3. Factor = Cable Loss + Antenna Factor - Amplifier Gain

80.0 dBuV/m



Notes:

1. Measuring frequencies from 1 GHz to 25GHz.
2. Radiated emissions measured in frequency above 1000MHz were made with an instrument using peak and average detector mode of the emission shown in Actual FS column.

END OF THE REPORT