



Appendix - Internal Photographs of EUT Constructional Details

Model Name: TickTock-S

Photo 1



Photo 2





Photo 3

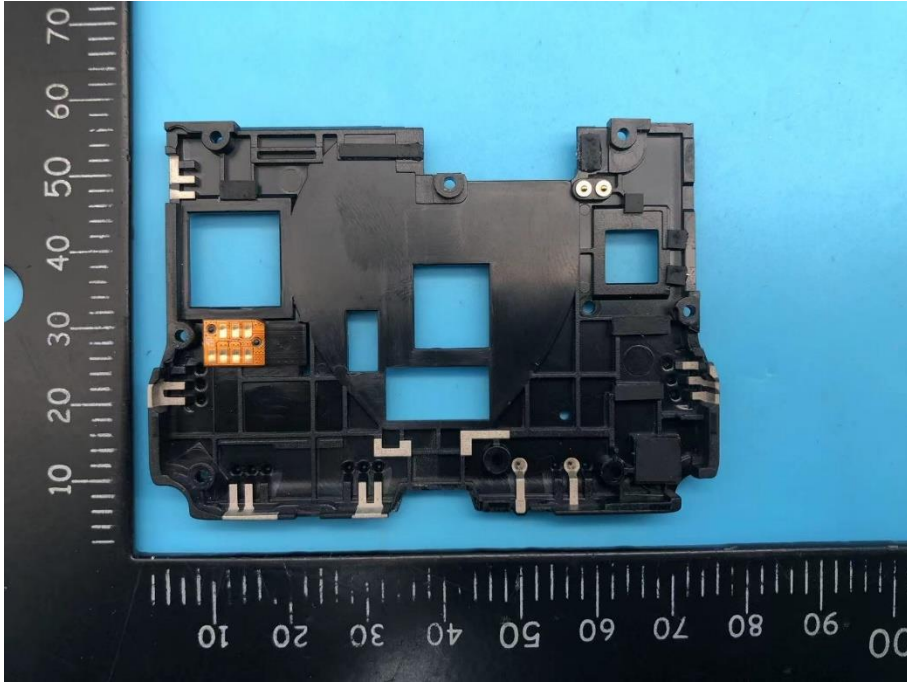


Photo 4





Photo 5

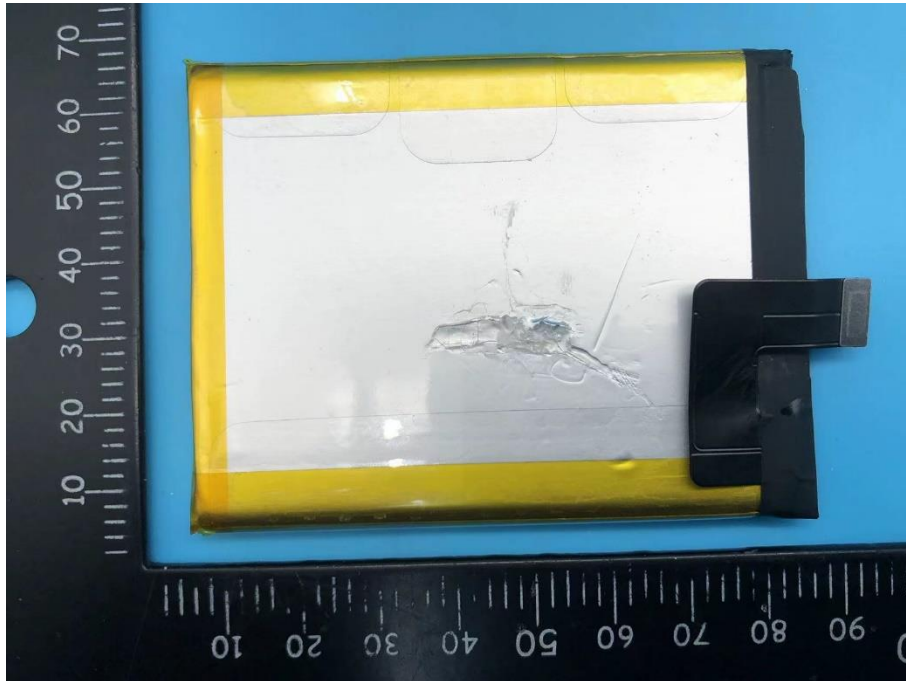


Photo 6

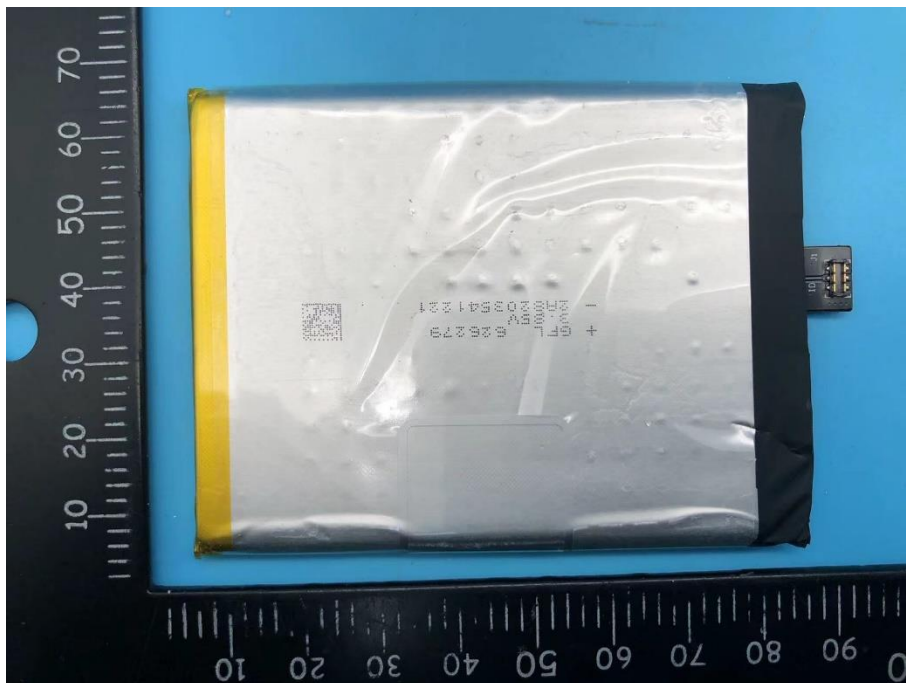




Photo 7

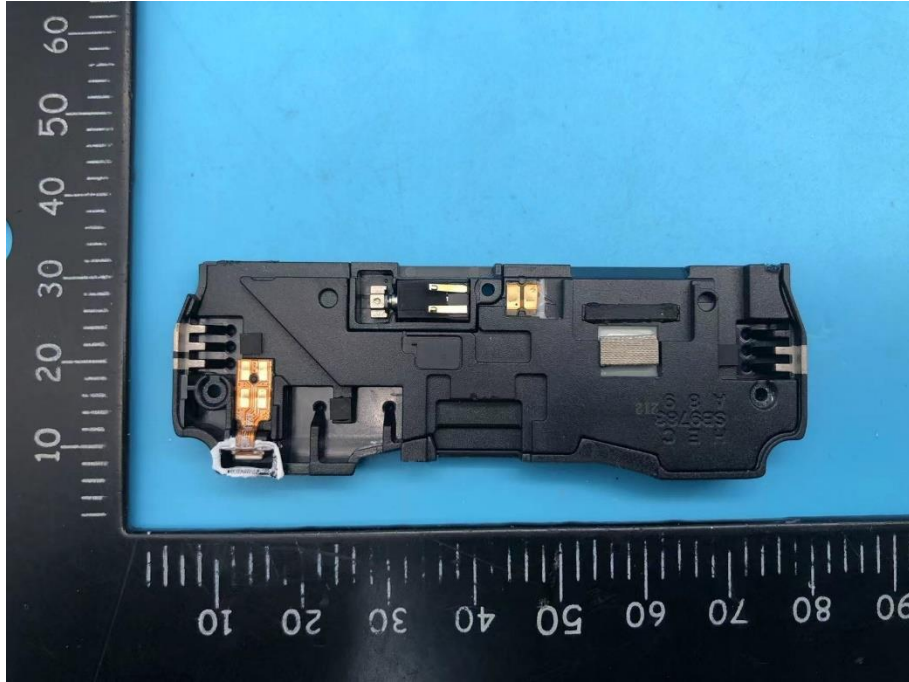


Photo 8





Photo 9

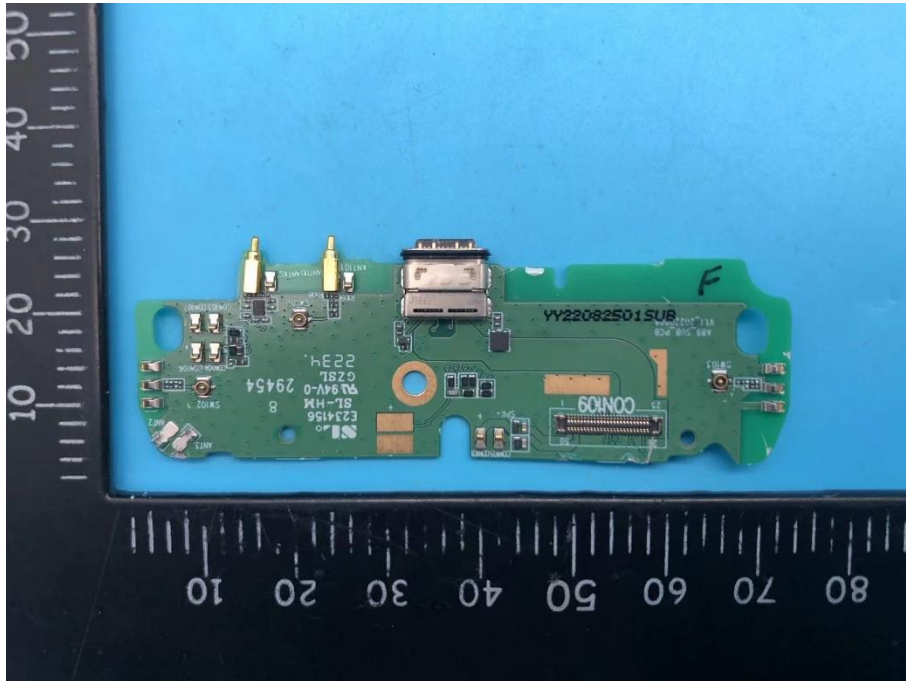


Photo 10

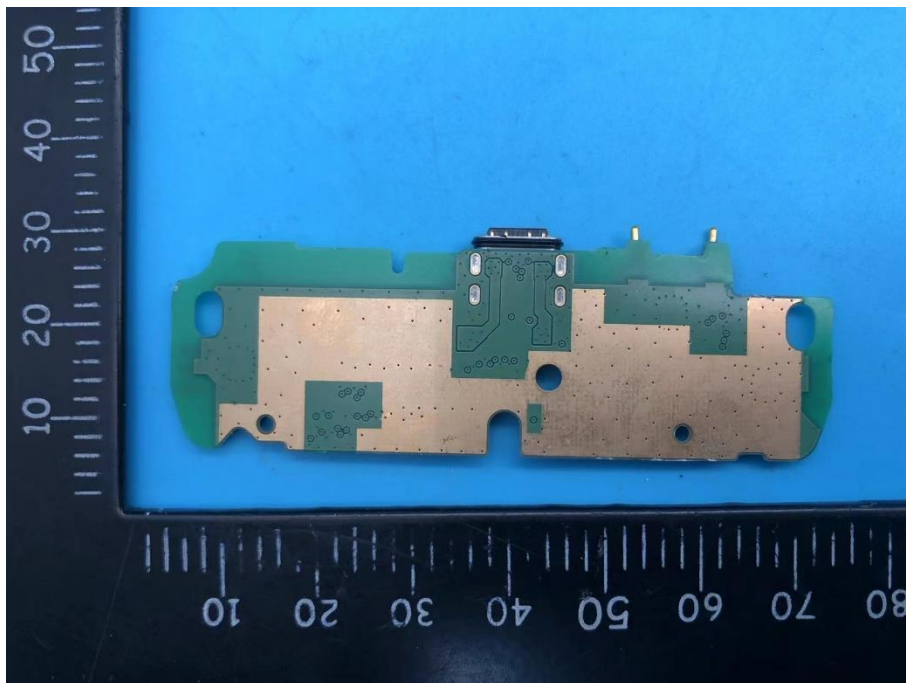




Photo 11

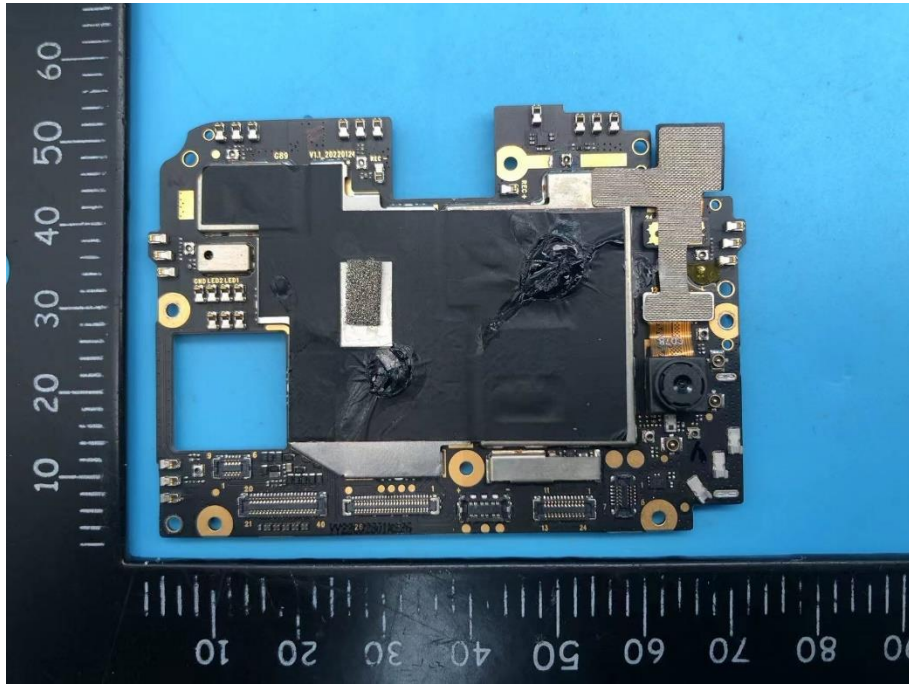


Photo 12

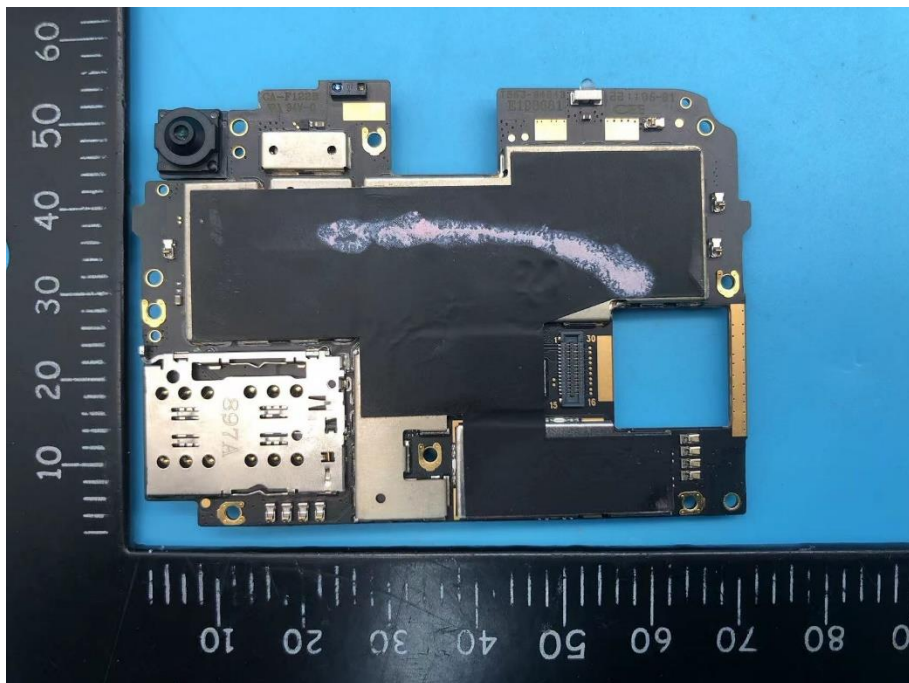




Photo 13

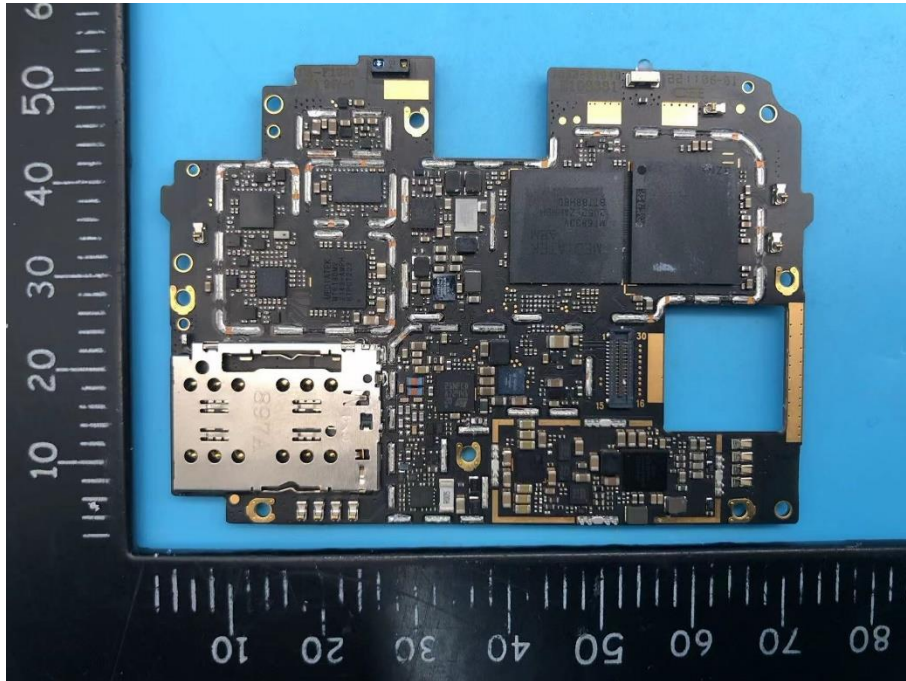


Photo 14

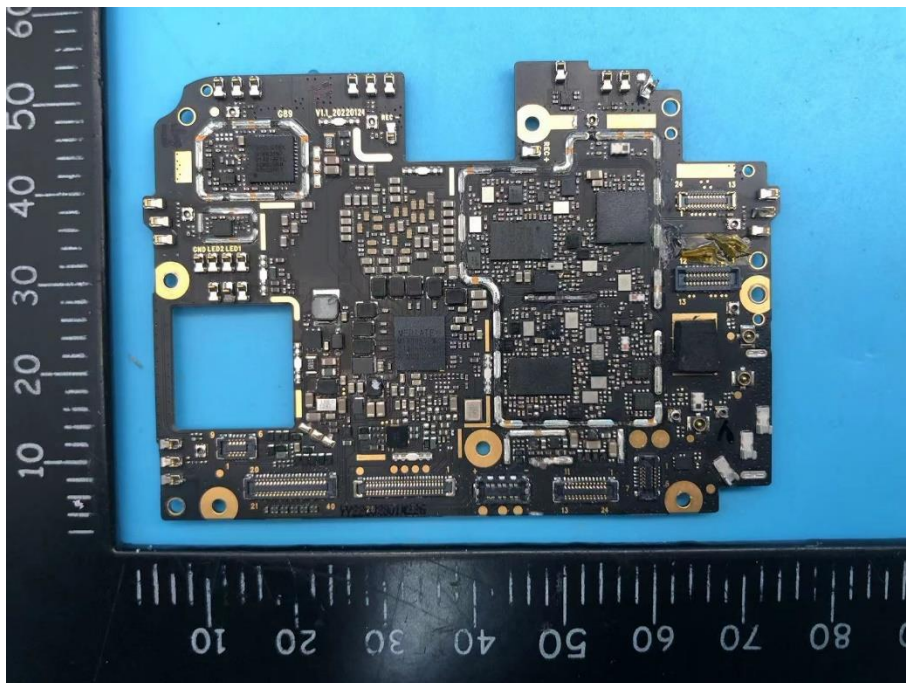




Photo 15

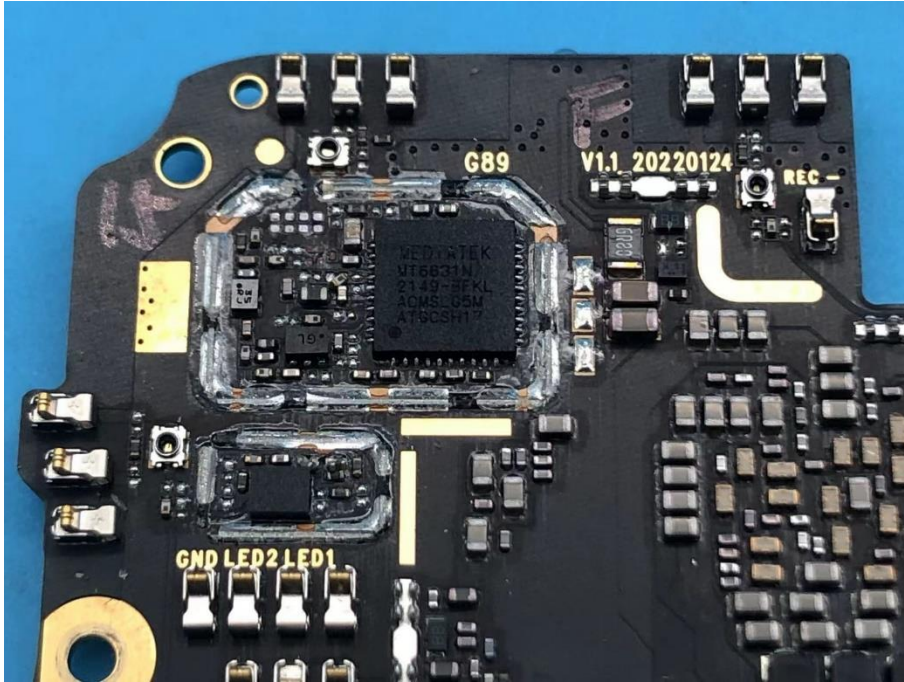


Photo 16

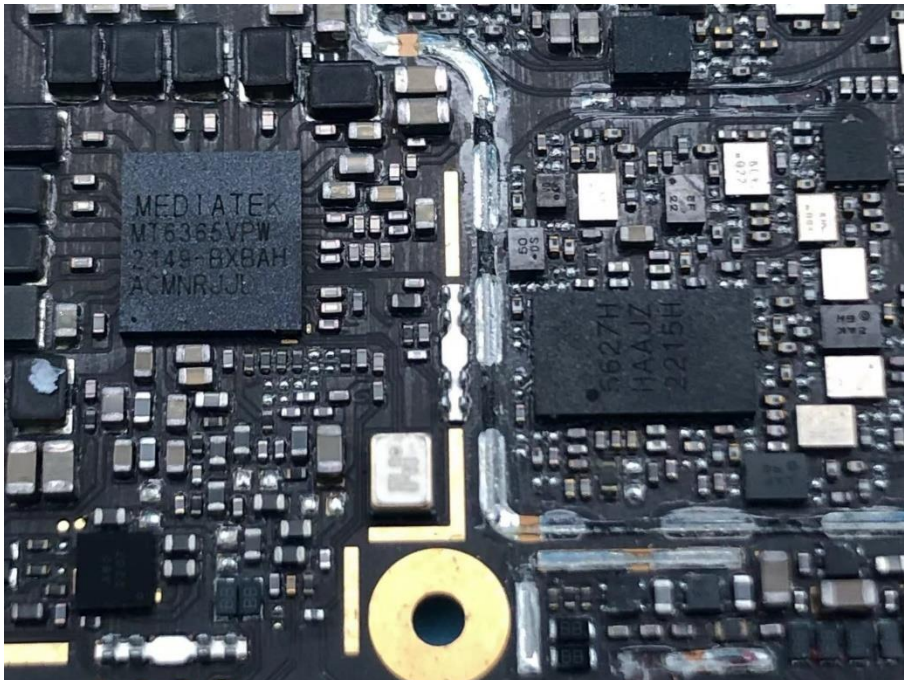




Photo 17

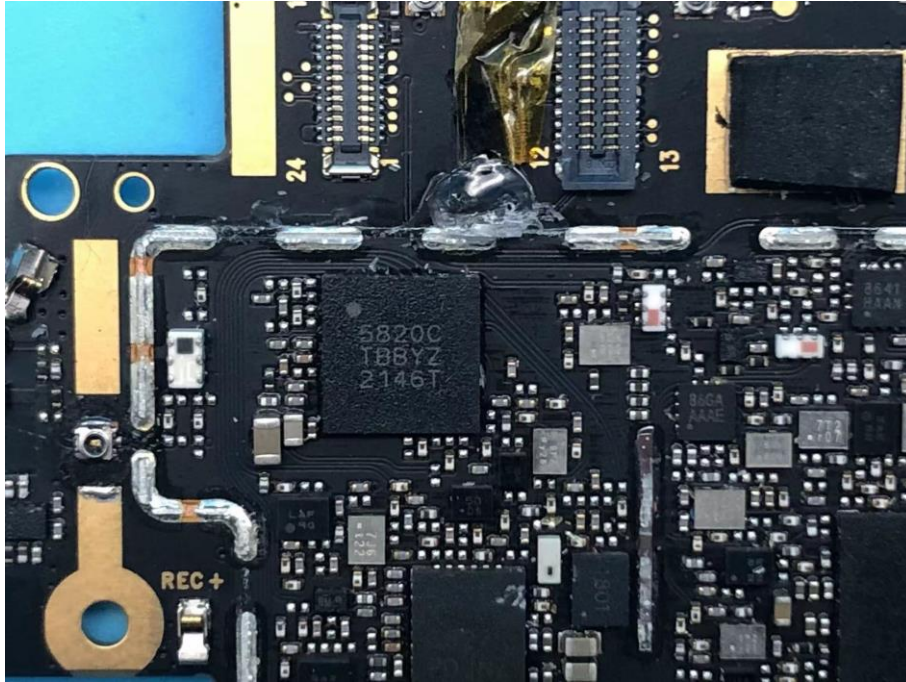


Photo 18

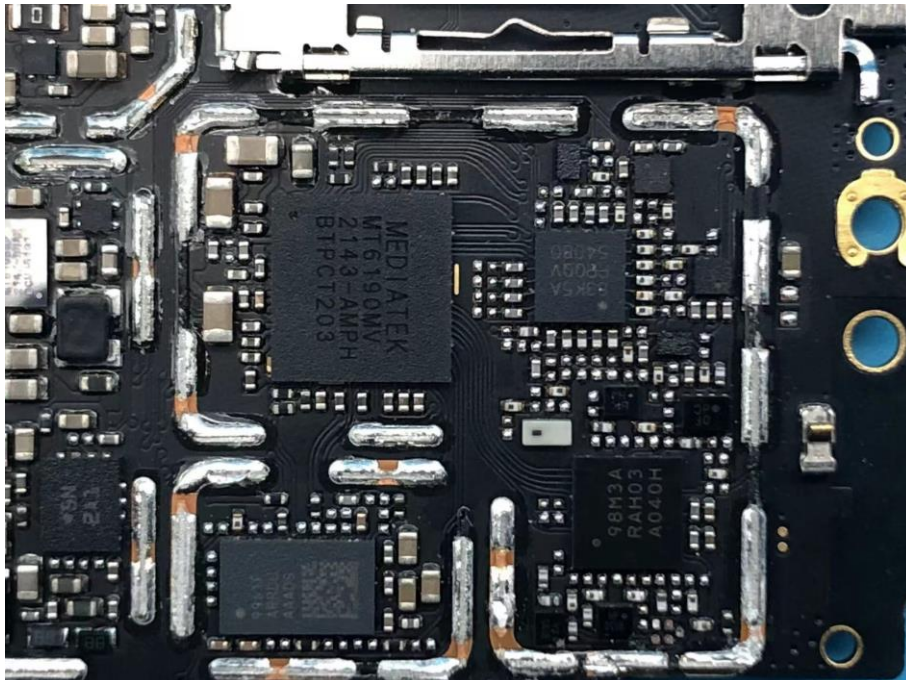




Photo 19

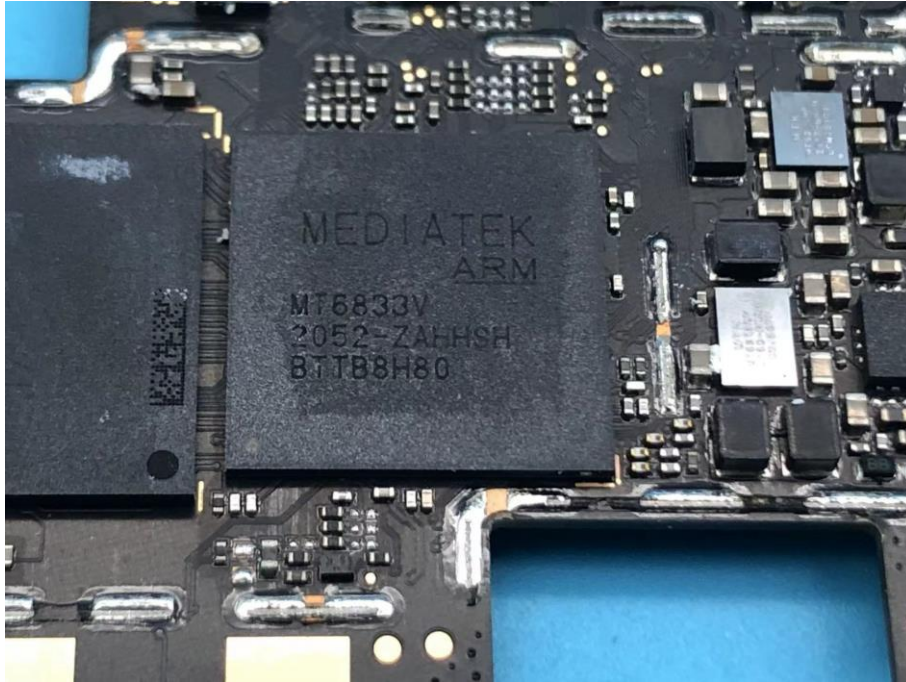


Photo 20

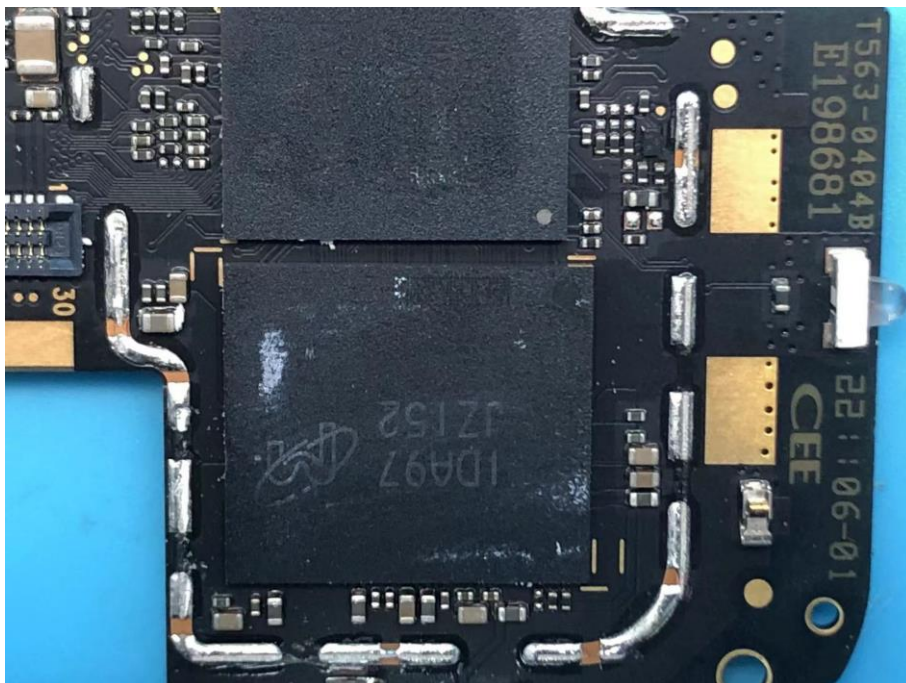




Photo 21

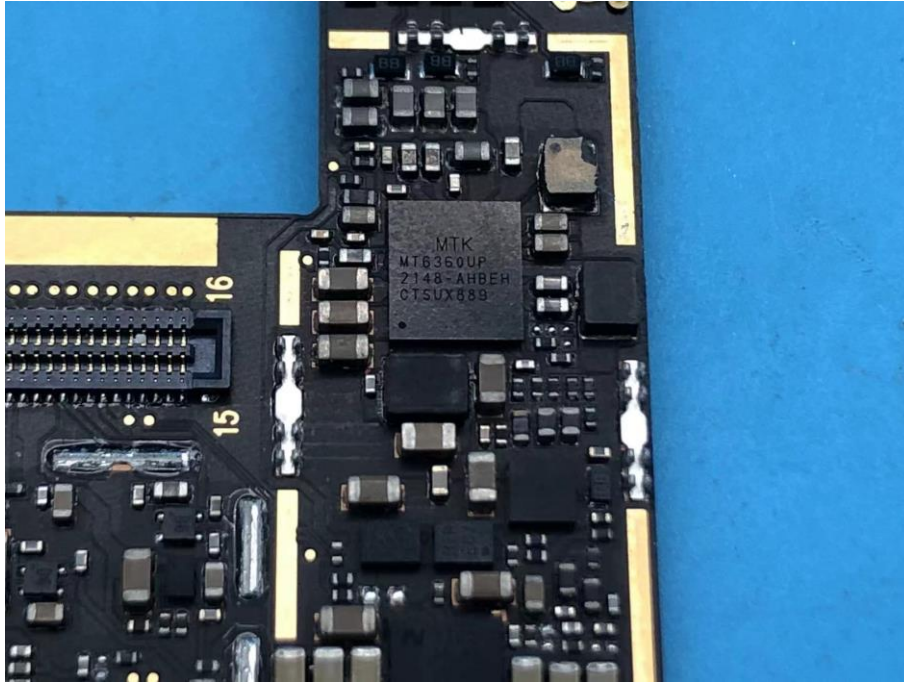


Photo 22





Photo 23



Photo 24

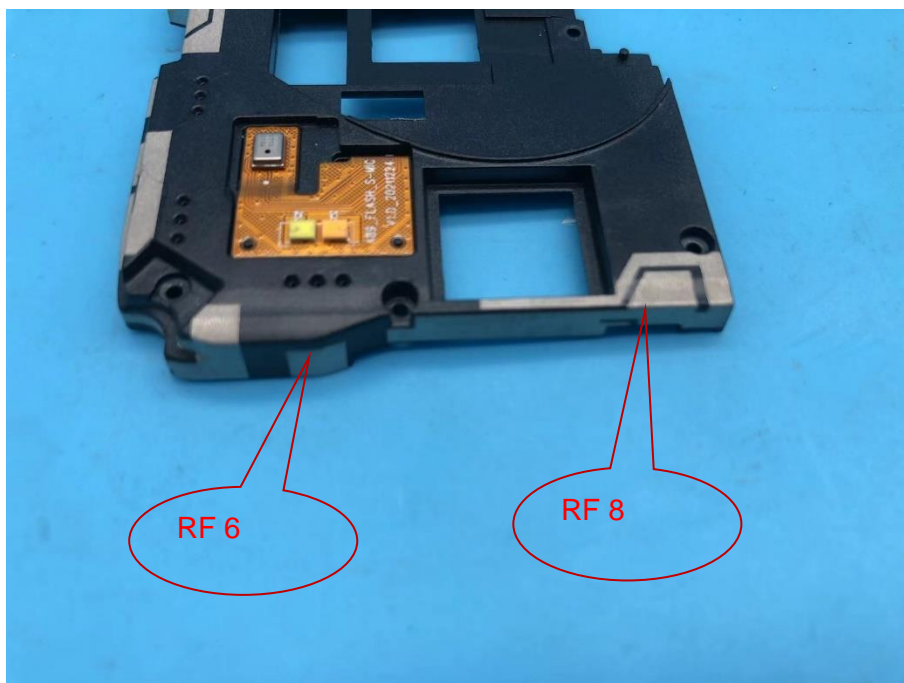




Photo 25

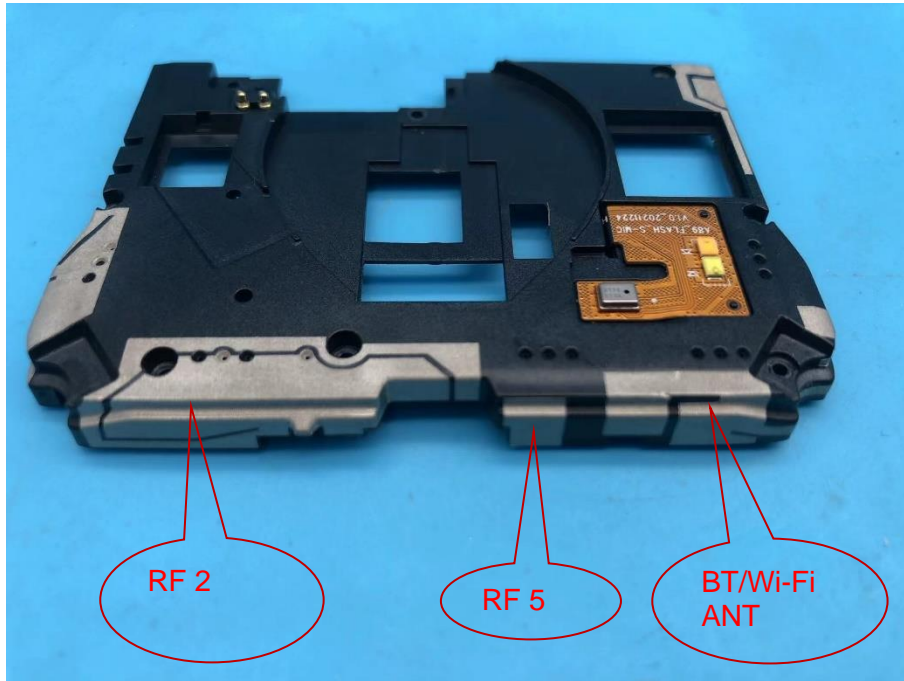


Photo 26





Antenna information

GSM: B5/B8

CDMA 1X C2K: BC0

WCDMA: B5/B8/B19

LTE-FDD: B5/B8/B12/B13/B17/B18/B19/B20/B26/B28

NR: n5/n8/n20/n28

RF1--Main(TRX), RF2--DIV(DRX)

GSM: B1/B3

CDMA 1X C2K: BC1

WCDMA: B1/B2/B4

LTE-FDD: B1/B2/B3/B4/B7/B25/B66

LTE-TDD: B34/B38/B39/B40/B41

RF2--Main(TRX), RF1--DIV(DRX1), RF8--DIV(DRX2)

NR: n1/n2/n3/n7/n25/n38/n40/n41/n66

RF7--Main(TRX), RF1--DIV(DRX)

LTE-TDD: B42

NR: n77/n78

RF5--Main(TRX), RF3--Main(PRX2), RF6--DIV(DRX1), RF4--DIV(DRX2)