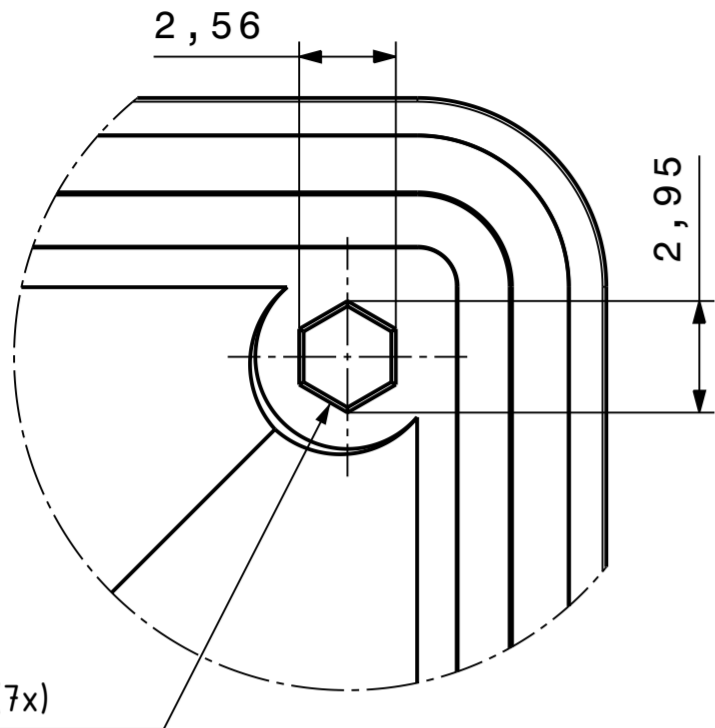
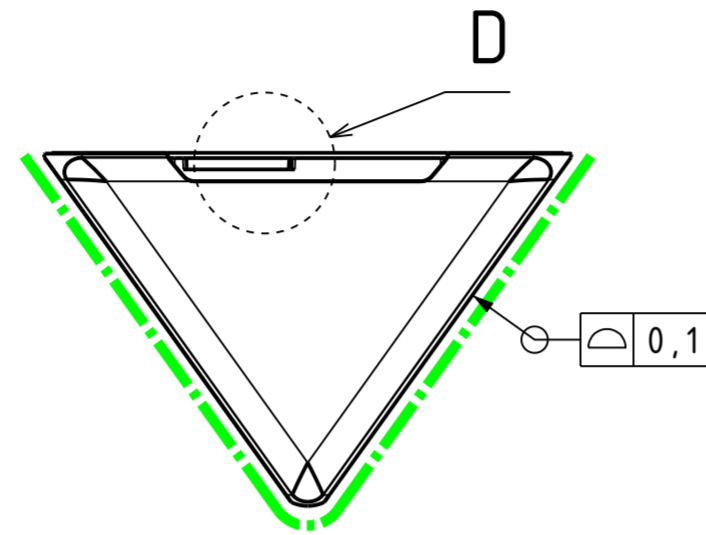


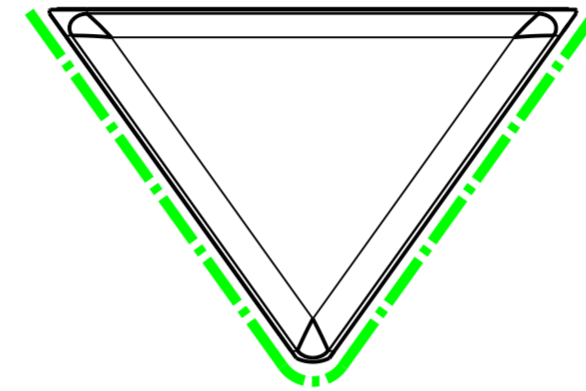
DETAIL C
SCALE: 5:1



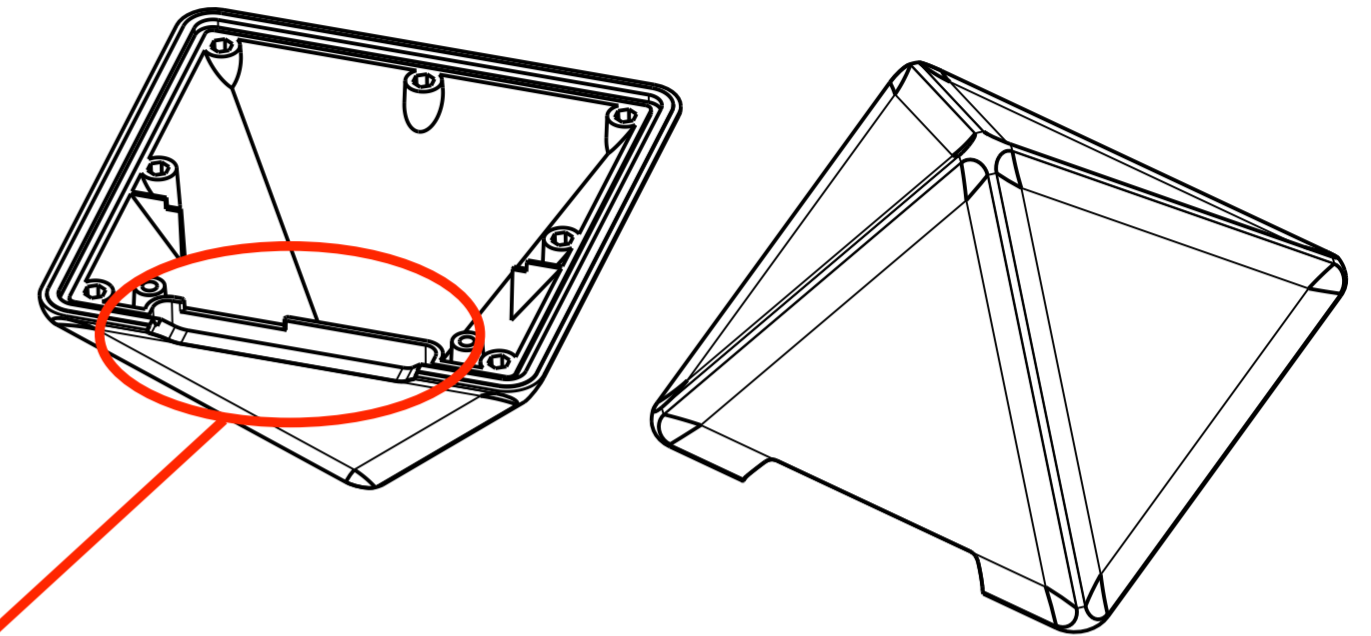
FRONT VIEW
SCALE: 1:1



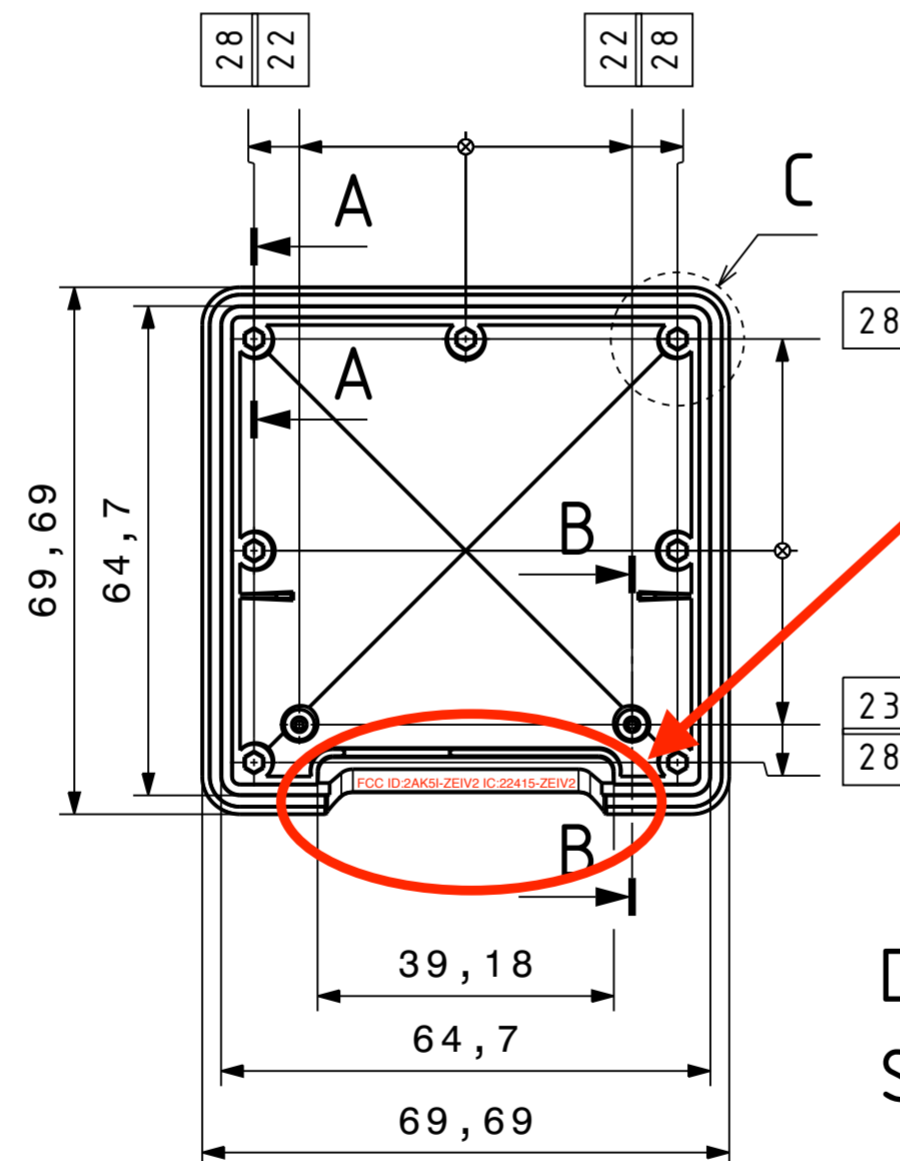
LEFT VIEW
SCALE: 1:1



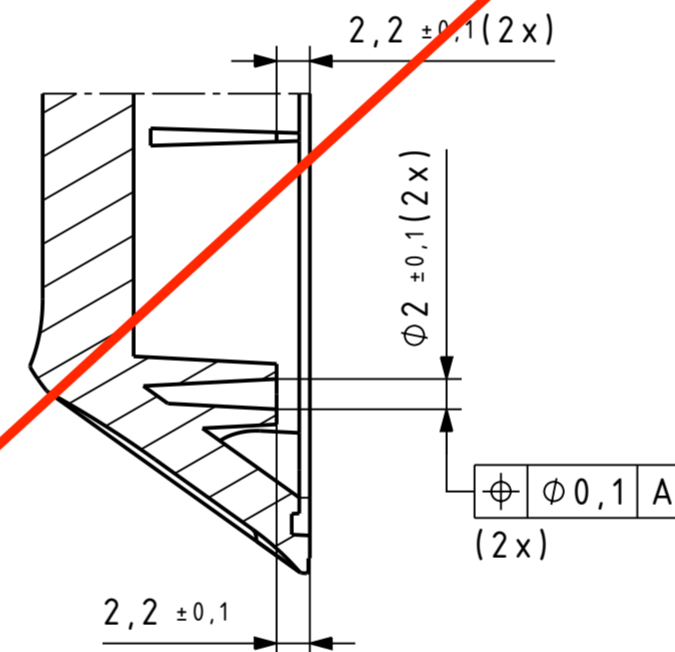
ISOMETRIC VIEW
SCALE: 1:1



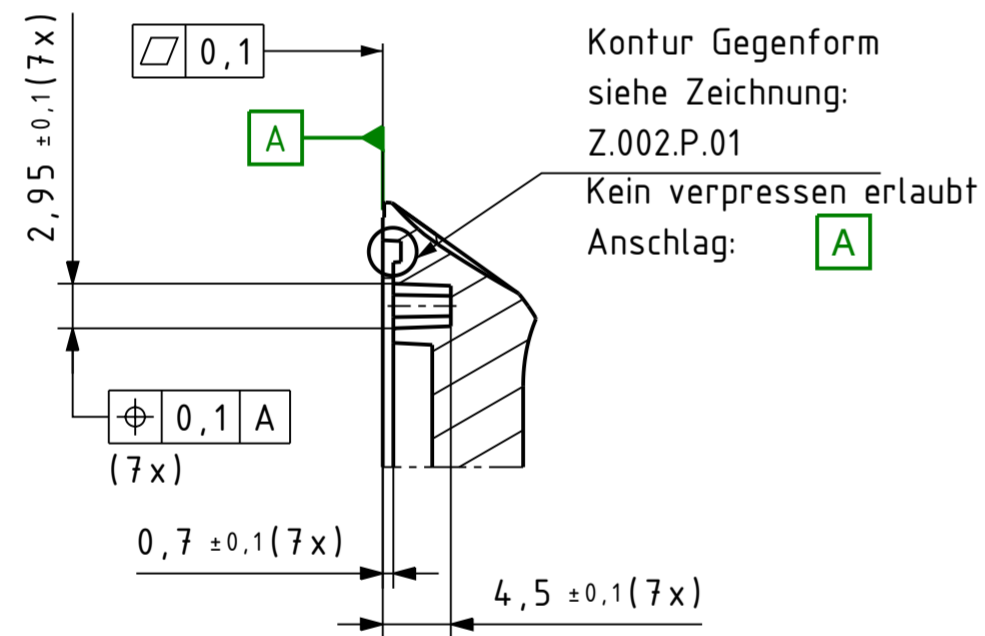
TOP VIEW
SCALE: 1:1



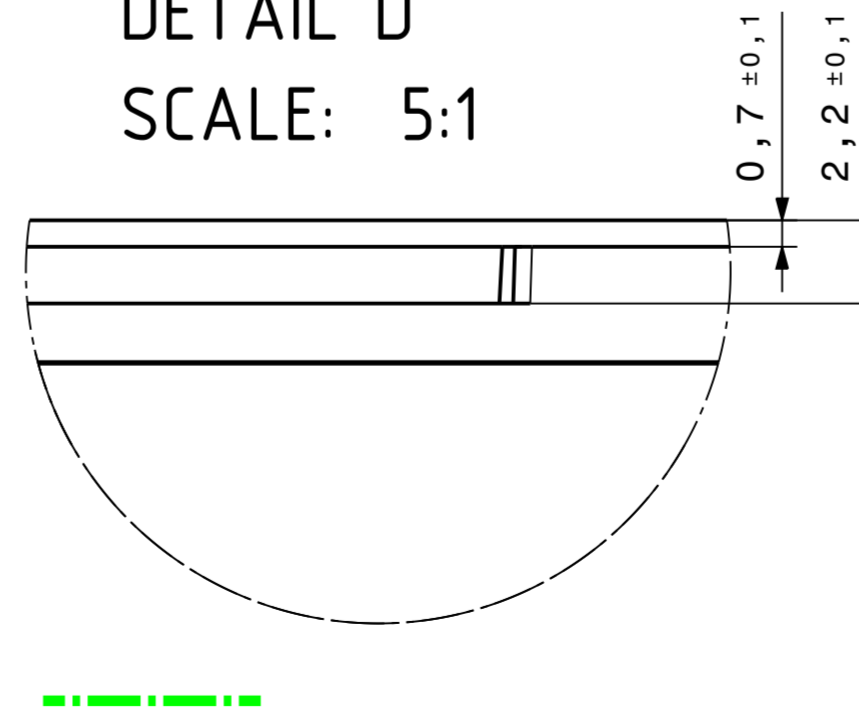
SECTION B-B
SCALE: 2:1



SECTION A-A
SCALE: 2:1



DETAIL D
SCALE: 5:1



ENTFORMSCHRAEGEN NACH BEDARF
DRAFT AS REQUIRED

KEIN GRAT ZULAESSIG
NO FLASH ALLOWED

UNBEMABTE GEOMETRIE ODER TOLERANZEN SIEHE DIN 16901
FOR UNSPECIFIED GEOMETRY OR TOLERANCES REFER TO DIN 16901

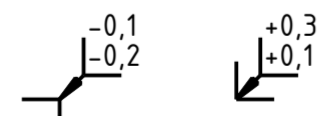
NO.	SHEET / ZONE	DATE	CHANGED	APPROVED	REVISION RECORD
-	-	-	-	-	-
-	-	-	-	-	-
-	-	-	-	-	-
-	-	-	-	-	-
-	-	-	-	-	-
-	-	-	-	-	-
-	-	-	-	-	-

© COPYRIGHT TIMEULAR GMBH 2018. ALL RIGHTS RESERVED - THIS DRAWING IS THE PROPERTY OF TIMEULAR GMBH AND MAY NOT BE REPRODUCED IN ANY FORM, EITHER IN WHOLE OR IN PART, OR MADE AVAILABLE TO ANY THIRD PARTY OR USED FOR MANUFACTURING OR ANY OTHER PURPOSE WITHOUT THE PRIOR WRITTEN PERMISSION OF TIMEULAR GMBH

CAD-DRAWING		CAD-SYSTEM		CATIA	
MODIFICATIONS WITHIN CAD-SYSTEM ONLY!		PART / ASSEMBLY FILENAME		Unterteil.CATPart	
DRAWING FILENAME		DRAWING FILENAME		Unterteil.CATDrawing	
MATERIAL				SURFACE PROTECTION	
PC/ABS (weiss)				NONE	
MATERIAL TREATMENT				PROJECTION	
NONE					
PROJECT	DRAWN	NAME	DATE	DESIGN RESPONSIBILITY	
ZEI°	K.FISTER	K.FISTER	30.08.2018	K.FISTER	
WEIGHT [kg] (CALCULATED)	CHECKED	NAME	DATE		
0,035	K.FISTER	K.FISTER	30.08.2018		
PART / ASSEMBLY NAME		REVISION		SCALE	
UNTERTEIL		001		1:1	
TIMEULAR GMBH NIKOLAIPLATZ 4 8020 GRAZ AUSTRIA www.timeular.com hello@timeular.com		Z.001.P.01		FORMAT A2	
		SHEET		OF	
		1		1	

UNDIMENSIONED GEOMETRIES TO BE CARRIED OVER FROM DATA RECORD
DO NOT SCALE DRAWING
MISSING SPECIFICATIONS TO BE SPECIFIED IN COORDINATION WITH SUPPLIER
IF IN DOUBT ASK
UNLESS OTHERWISE SPECIFIED:
DRAWING PRODUCED ACCORDING TO ISO 128-1:2003-02-15, ISO 129-1:2004-09-15
GEOMETRIC TOLERANCES ACCORDING TO ISO 1101:2012-04-15 & ISO 5459:2011-08-15
FOR UNSPECIFIED GENERAL TOLERANCES REFER TO ISO 2768-mH:1989-11-15
DELIVERY CONDITION TO BE DEFINED WITH SUPPLIER
EDGE CONDITIONS SHOWN ACCORDING TO ISO 13715:2000-06-15
GENERAL SURFACE FINISH SYMBOLS ACCORDING TO ISO 1302:2002-02-01
METHOD ACCORDING TO Rz, Ra ISO 4287:2009-06-15

WERKSTUECKKANTEN / EDGE CONDITION



OBERFLAECHEBESCHAFFENHEIT / SURFACE FINISH

ACCORDING TO REFERENCE PART
ENTSPRECHEND REFERENZ TEIL

MARKIERUNG ZEIGT SICHTBAREN BEREICH - KEIN ANGUSS ERLAUBT
VISIBLE AREA WHERE INDICATED - NO INJECTION ALLOWED