

LATCH

LATCH M

# WELCOME HOME

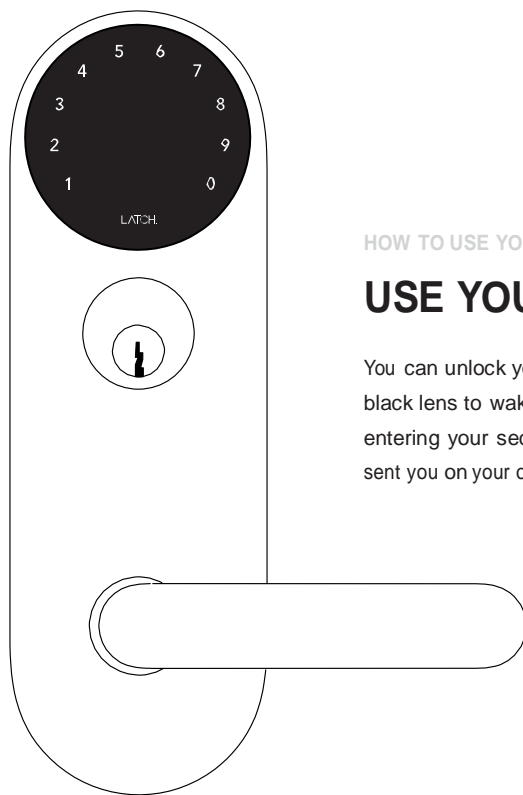
Thousands of years ago locks were invented to keep people out. Today our lives are busier. More people are coming in and out of our doors, and access is starting to feel restrictive. The challenge is no longer keeping people out, but letting the right people in.



#### HOW TO USE YOUR NEW LOCK

## USE THE APP

After downloading the app from the link we shared with you via email, you'll be able to unlock your door using your iPhone. When you're standing within a few feet of your door just tap the large button on the main screen of the app and you're in. You can also use the app to provide access to guests, family, friends and services.

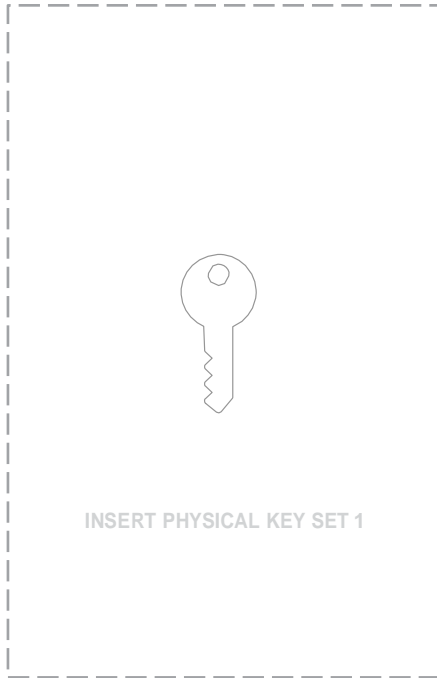


HOW TO USE YOUR NEW LOCK

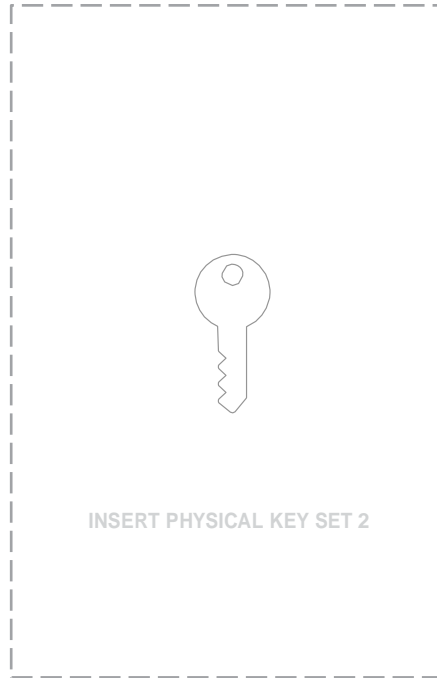
## USE YOUR PASSCODE

You can unlock your Latch lock by tapping the black lens to wake up the keypad and then by entering your secret seven digit passcode we sent you on your on-boarding email.

## APARTMENT DOOR



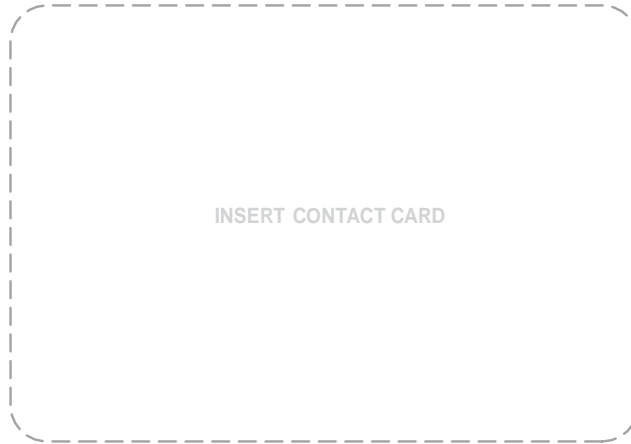
## BUILDING FRONT DOOR



### HOW TO USE YOUR NEW LOCK

## USE YOUR KEYS

Being on a testing stage we wanted you to have an alternative if something goes wrong, nonetheless we aim to get rid of keys completely. We encourage you to use your app or passcode.



#### SUPPORT

## WE ARE HERE FOR YOU

We will learn a lot from your interactions with our product and your feedback will help us build an excellent experience for all of our future customers. We thank you immensely for being an integral part of Latch. Keep this card with you so you can always contact your support assistant if you need them. There is room to write your personal passcode for safekeeping too.

# LATCH<sup>®</sup>

## FCC COMPLIANCE STATEMENT

CAUTION: Changes or modifications not expressly approved could void your authority to use this equipment

This device complies with Part 15 of the FCC Rules. Operation is subject to the following two conditions: (1) This device may not cause harmful interference, and (2) this device must accept any interference received, including interference that may cause undesired operation

## INDUSTRY CANADA STATEMENT

This device complies with Industry Canada licence-exempt RSS standard(s). Operation is subject to the following two conditions: (1) this device may not cause interference, and (2) this device must accept any interference, including interference that may cause undesired operation of the device.

Le présent appareil est conforme aux CNR d'Industrie Canada applicables aux appareils radio exempts de licence. L'exploitation est autorisée aux deux conditions suivantes : (1) l'appareil ne doit pas produire de brouillage, et (2) l'utilisateur de l'appareil doit accepter tout brouillage radioélectrique subi, même si le brouillage est susceptible d'en compromettre le fonctionnement.

All rights reserved. Latch™ 2016.