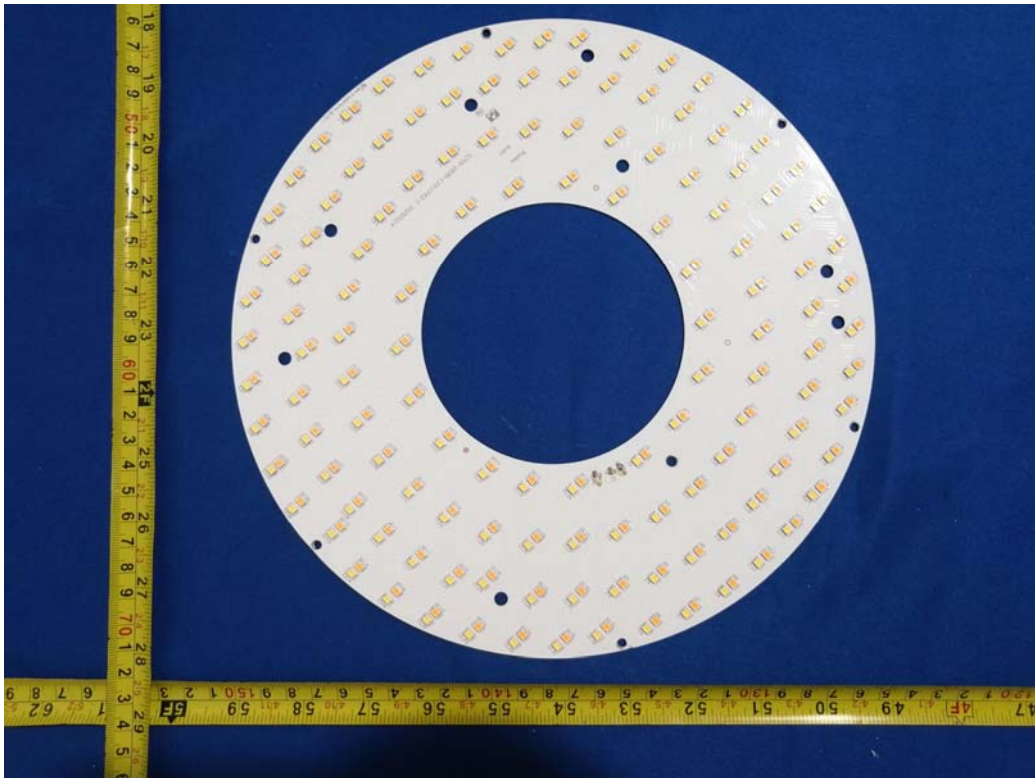
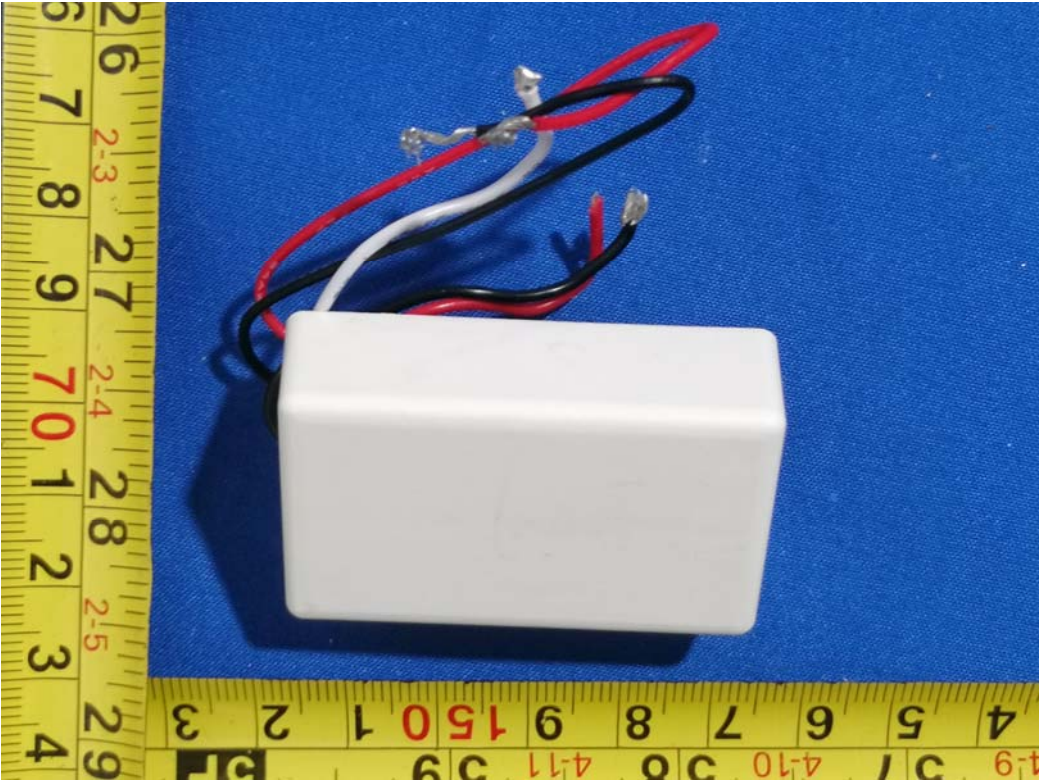
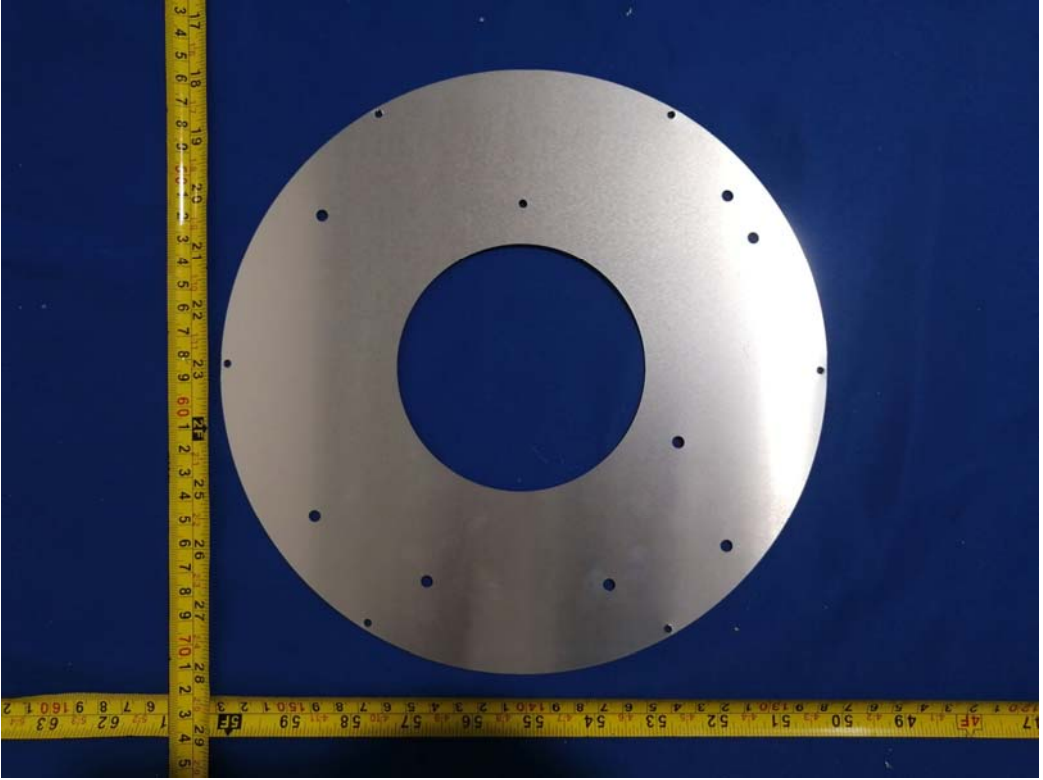
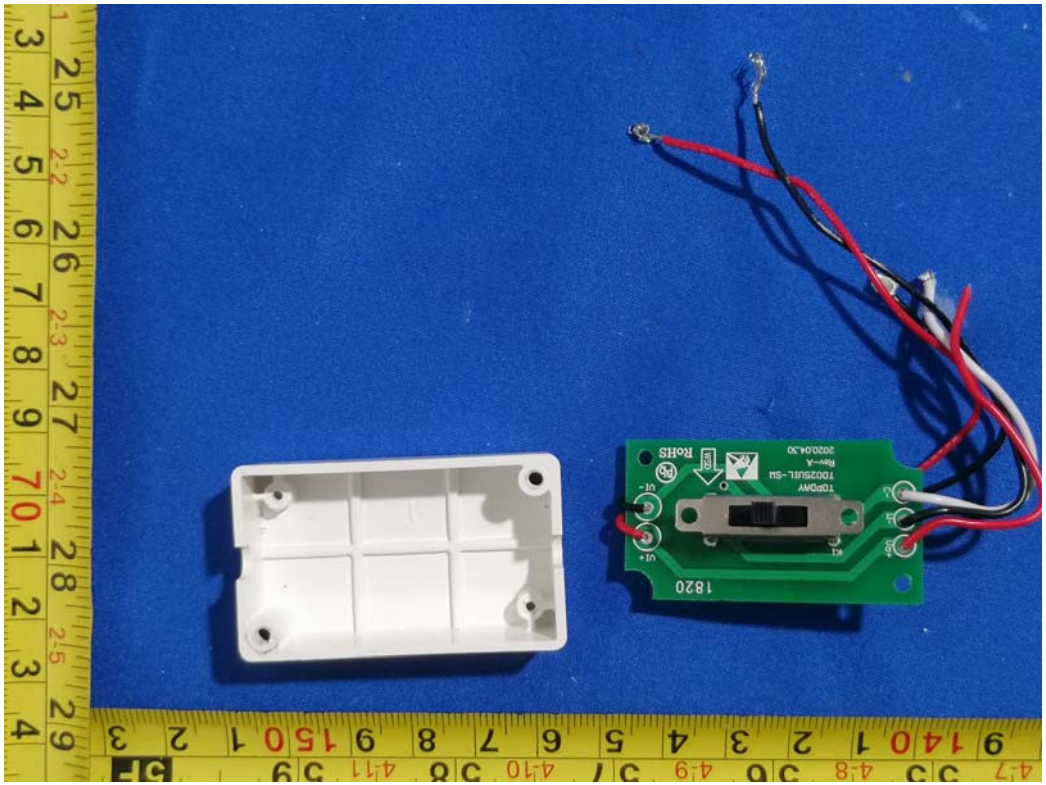
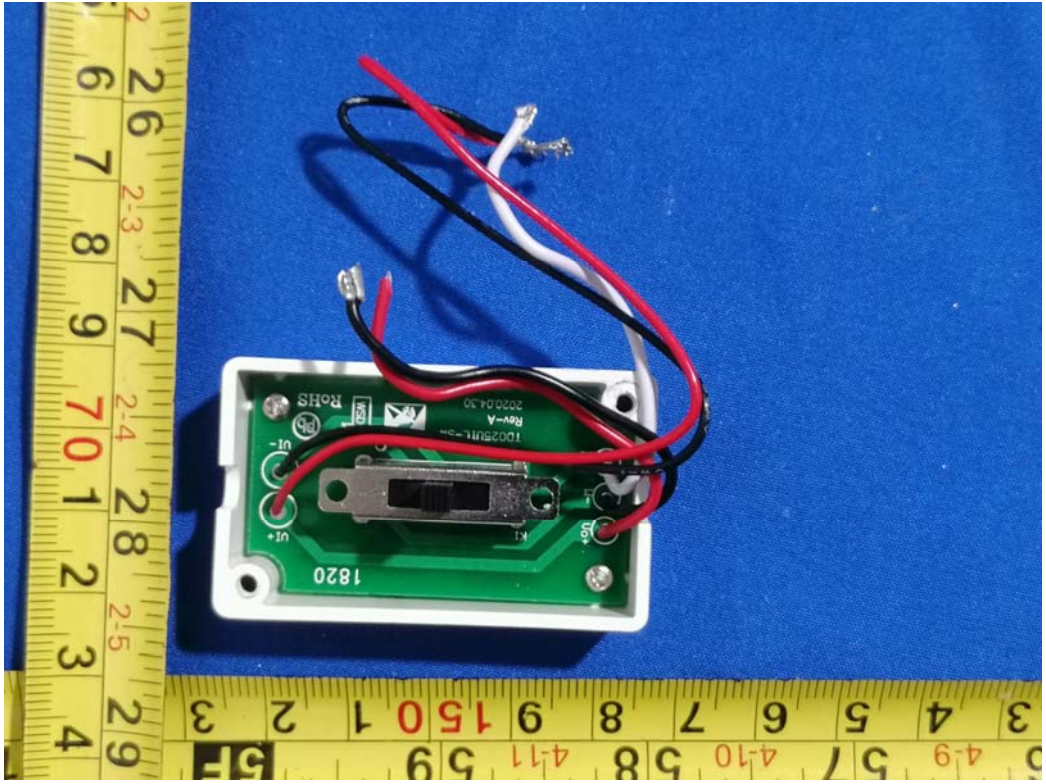


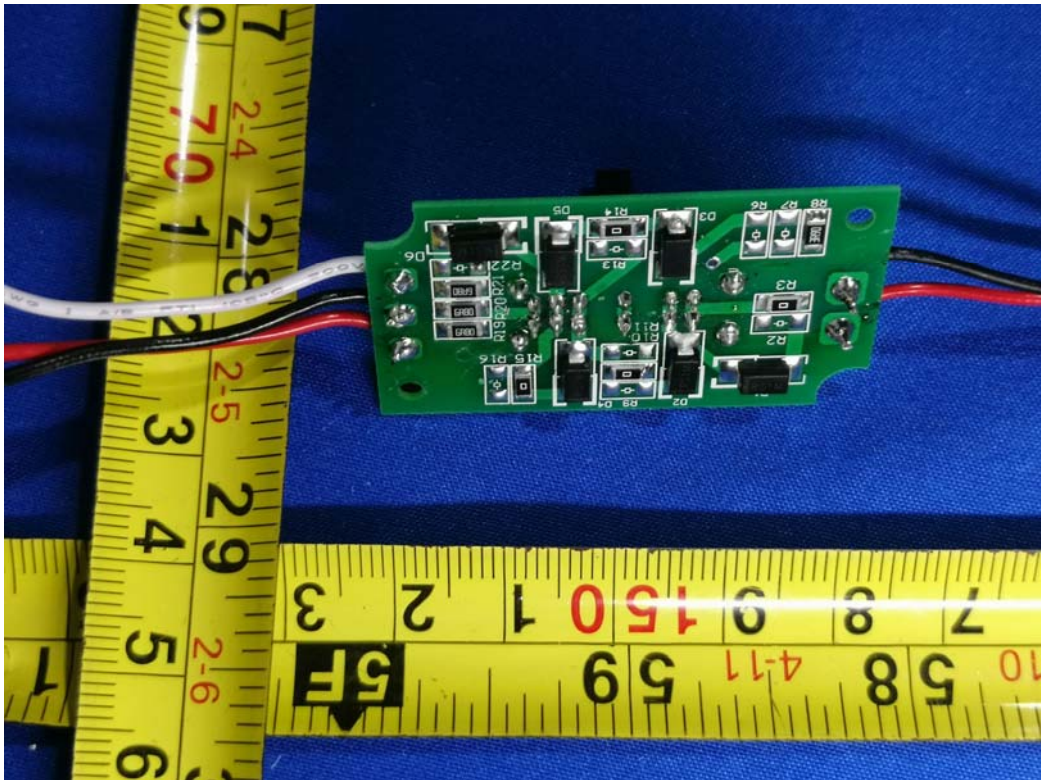
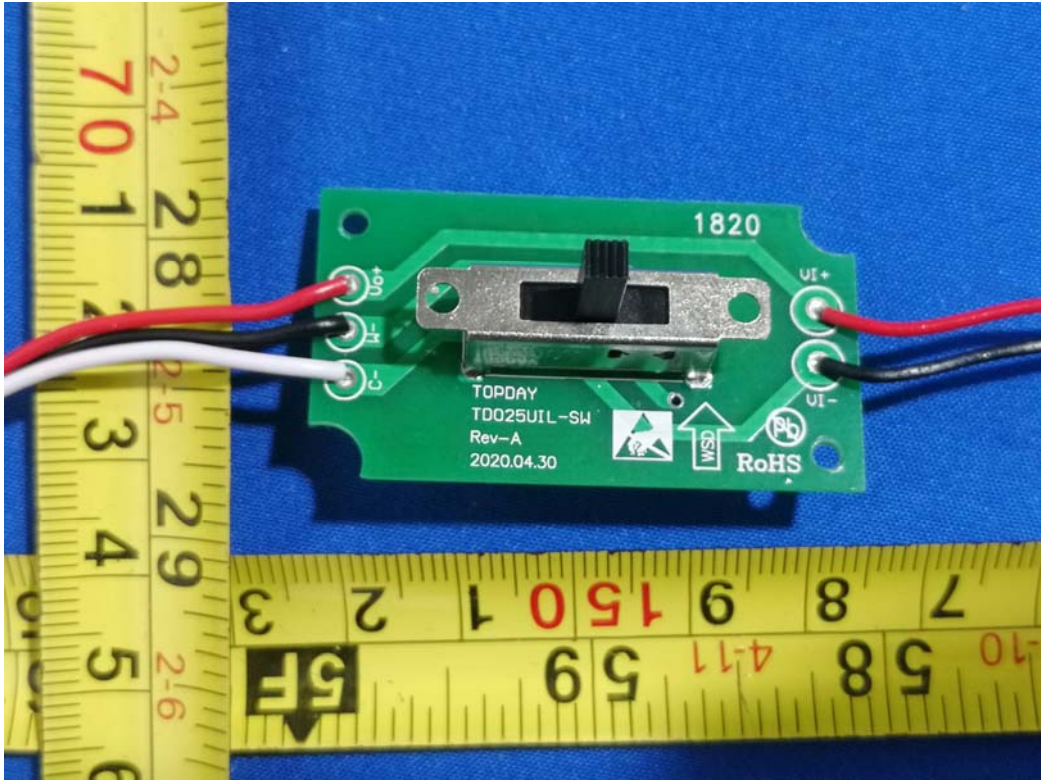
**EXHIBIT C - EUT INTERNAL PHOTOGRAPHS**

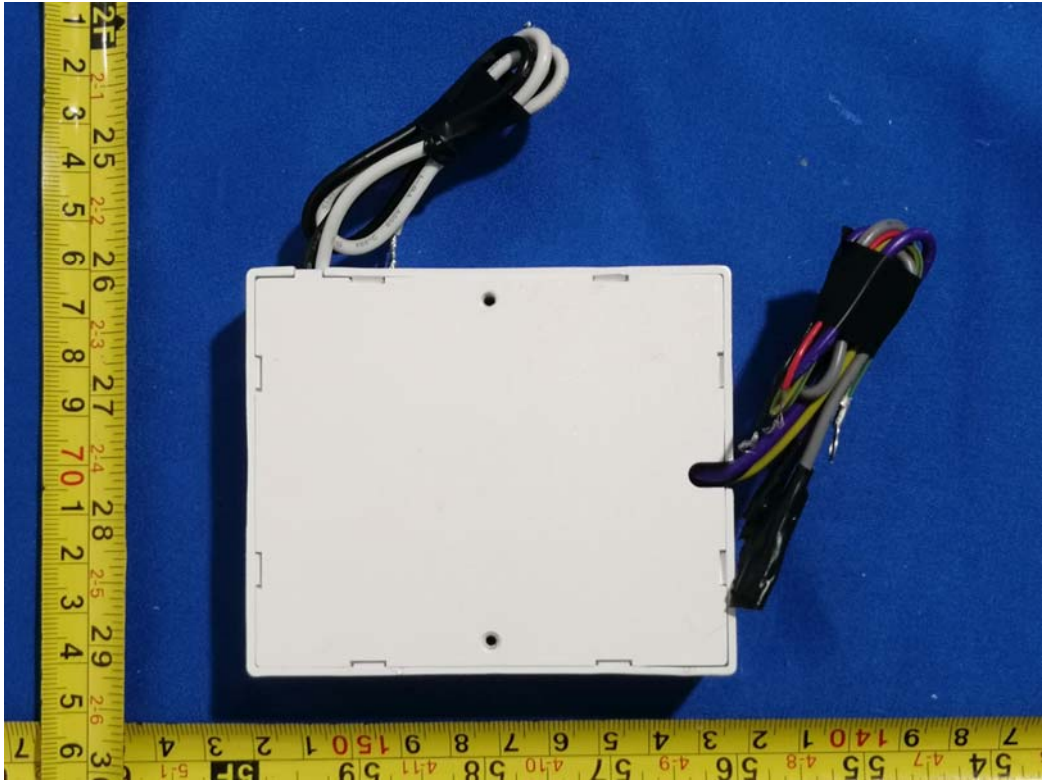
**Model: ML2LALABNU249CSMSV**

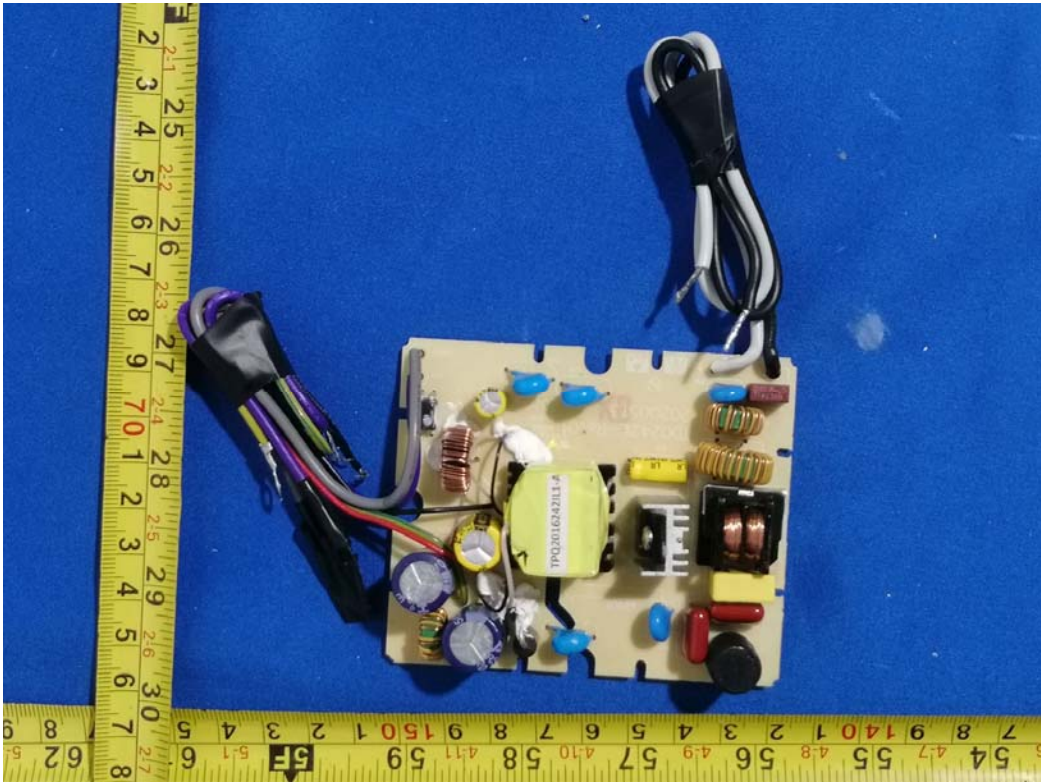
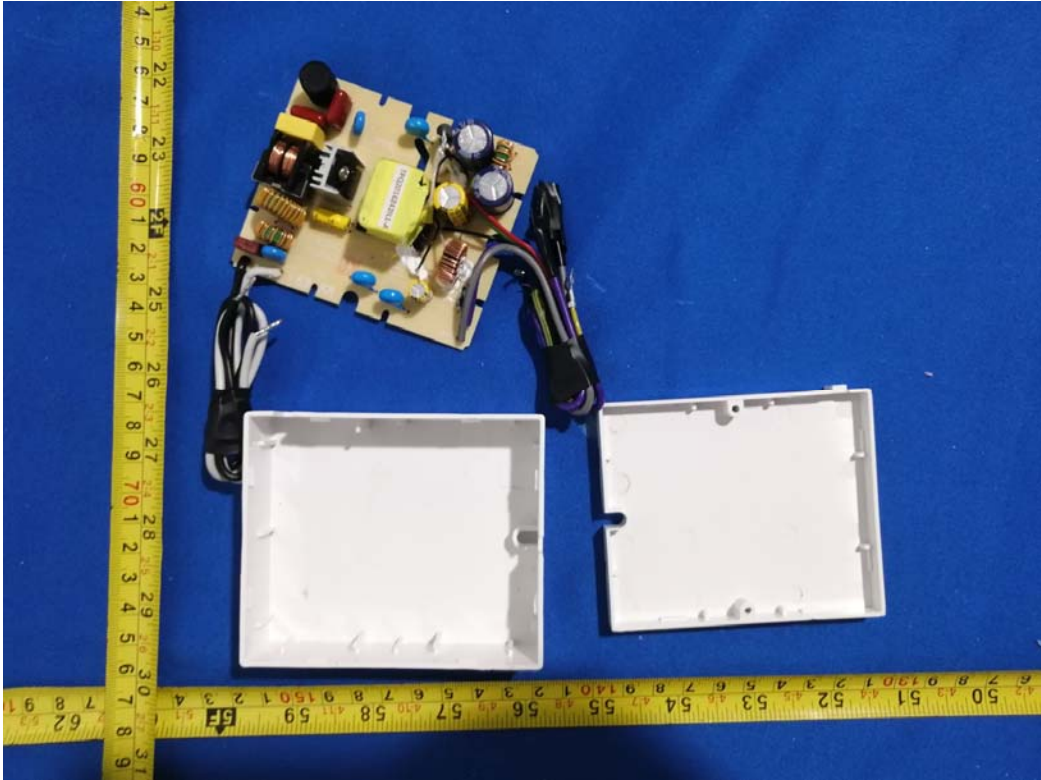


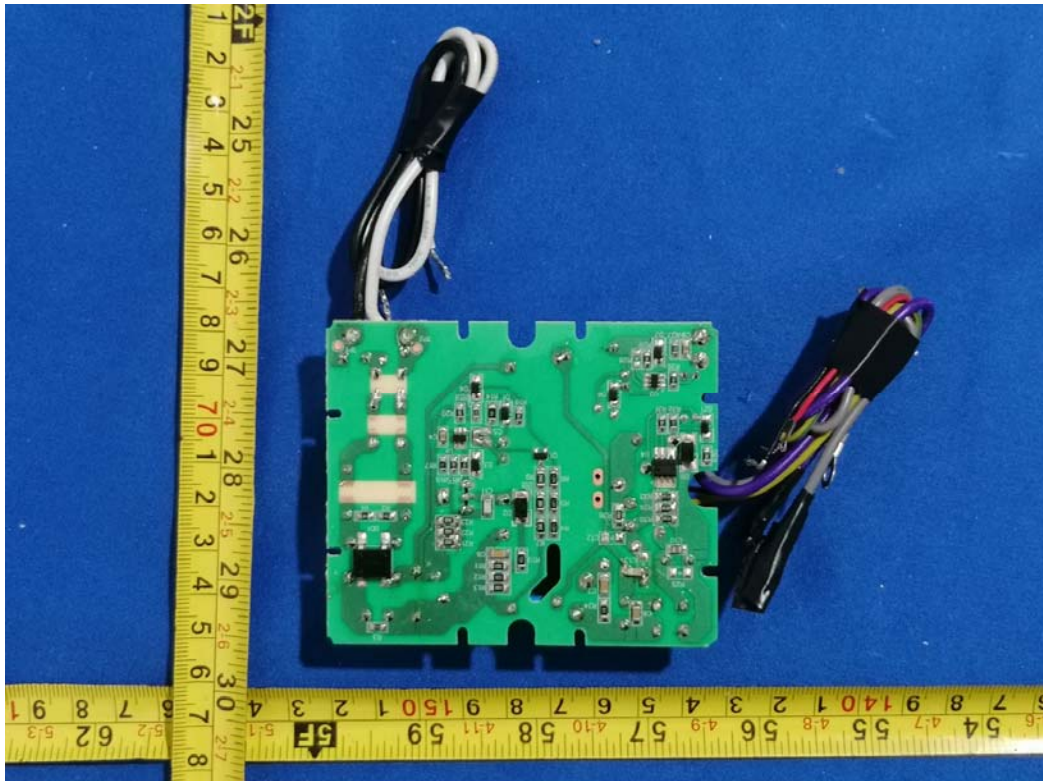


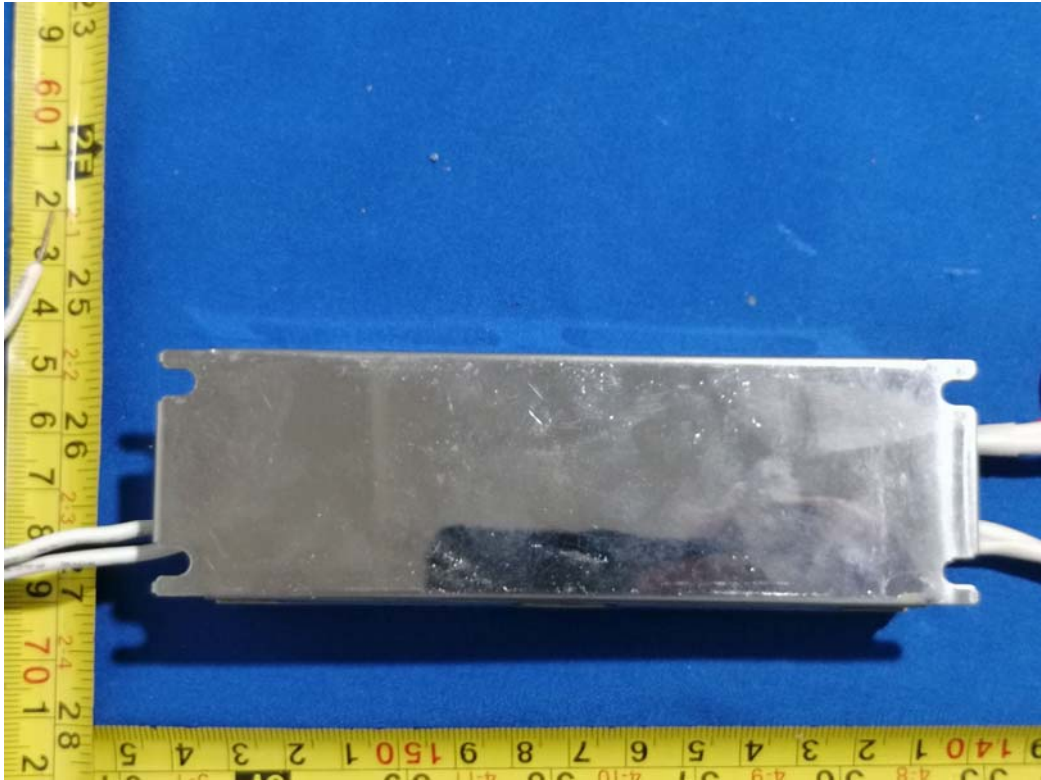






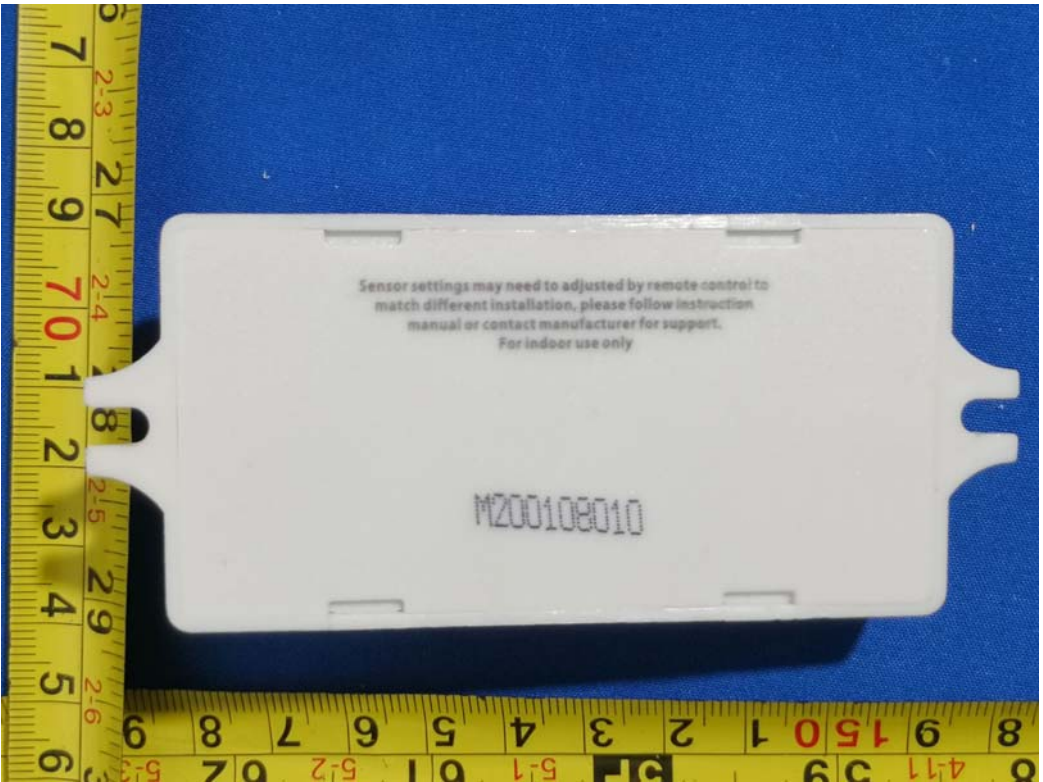
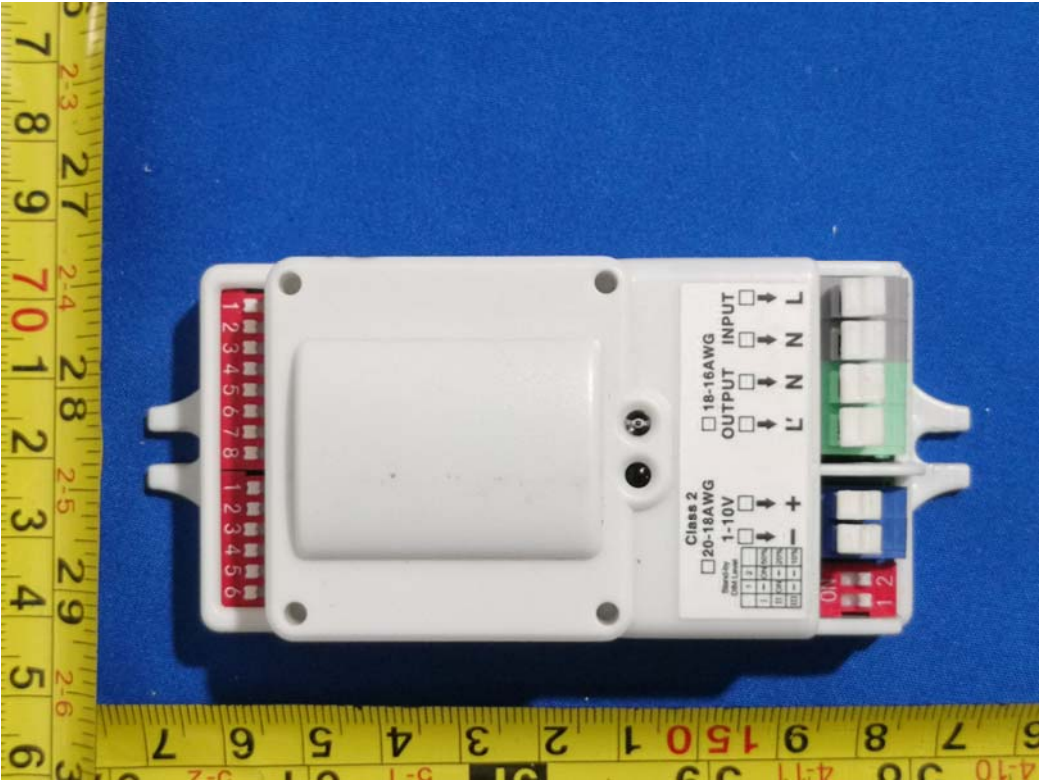


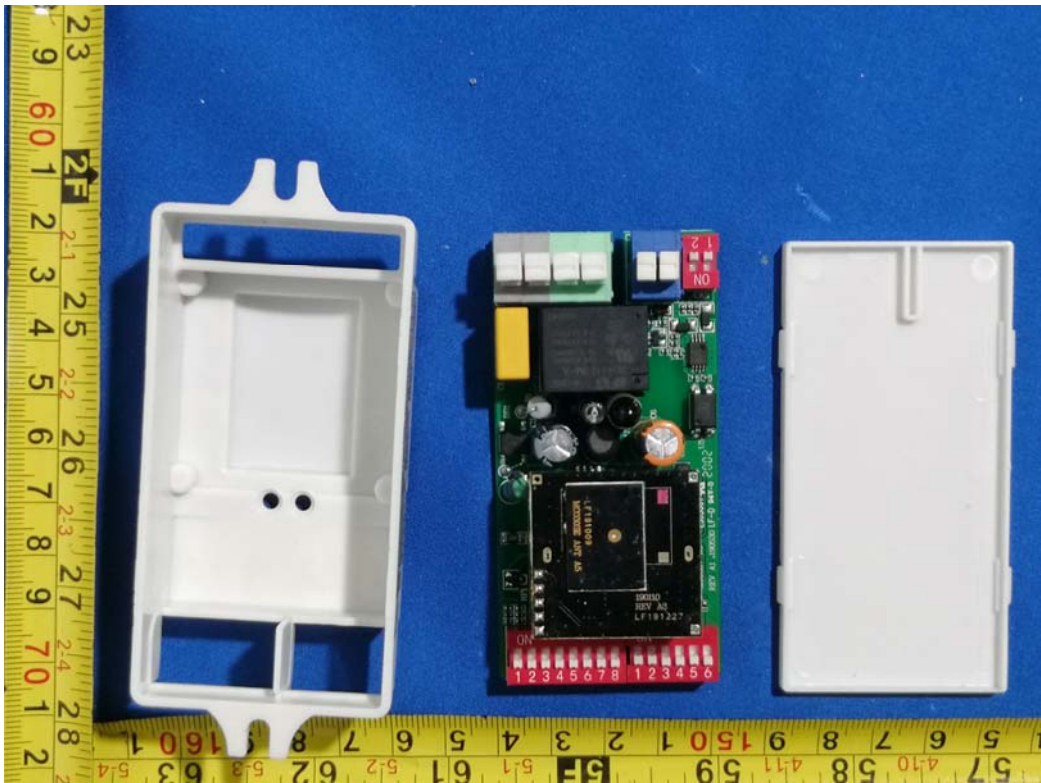




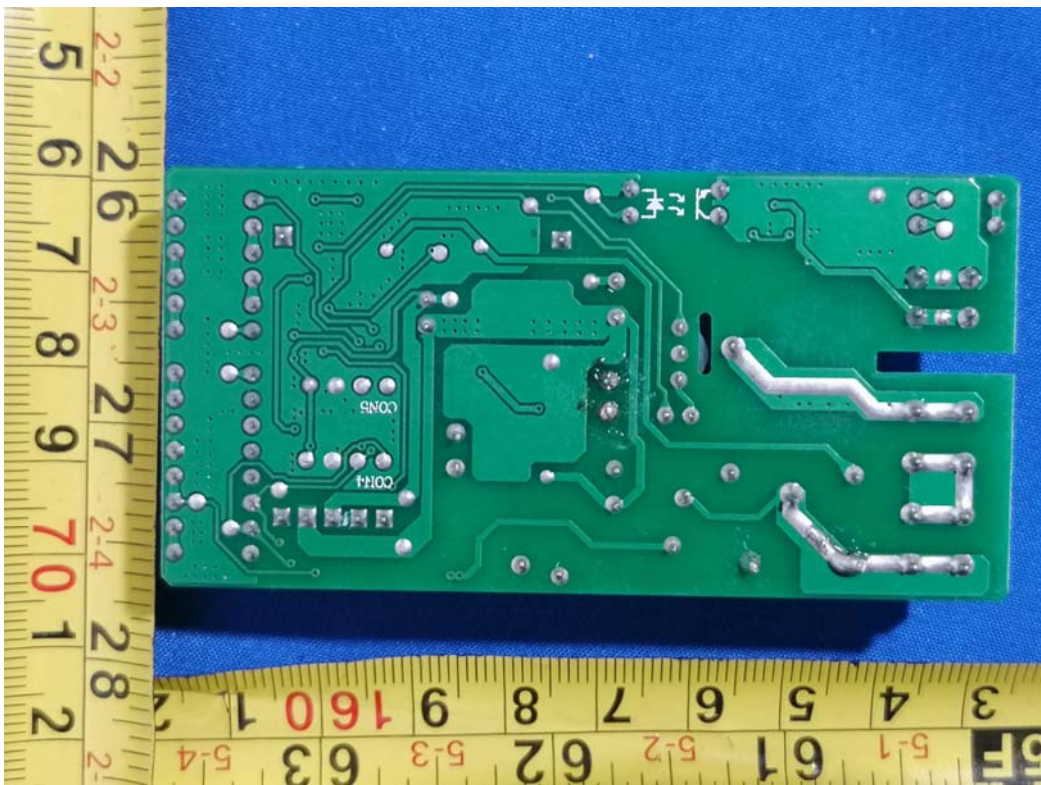
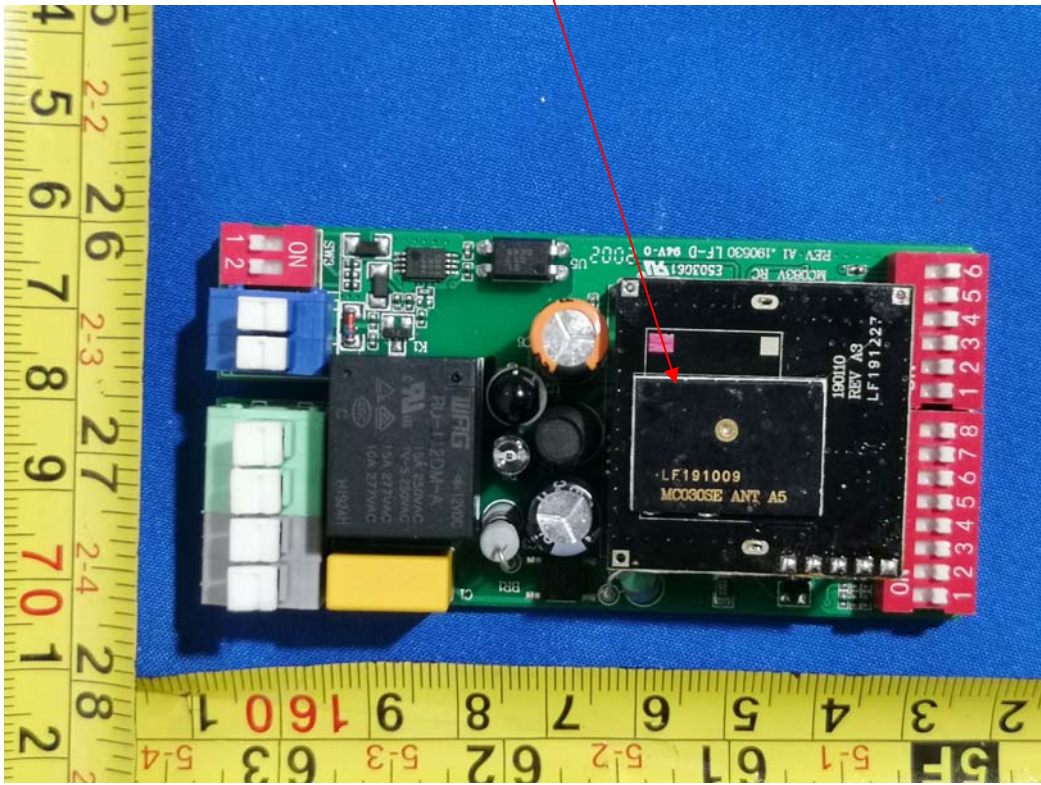
<p>www.fulham.com</p> <p><b>100V - 277V</b></p> <p>Ph: (323) 599-5001</p> <p>MADE IN CHINA</p> <p>POWER: WHT WH/BK BLK</p> <p>Patent: www.fulham.com/patents</p> <p></p>		<p>INPUT VOLTAGE 100-277V~ 50/60Hz</p> <p>INPUT CURRENT 100mA Max.</p> <p>INPUT POWER 6W Max.</p> <p>OUTPUT POWER 20W Max.</p> <p>OUTPUT VOLTAGE 12-55V---</p> <p>OUTPUT CURRENT 700mA Max.</p> <p>U-OUT 60V</p> <p>WHITE/BLACK LEAD 3A Max.</p> <p>FHSBATCC3-3 -20°C To 50°C</p> <p>NiCd 0°C To 50°C</p> <p>LiFePO4 10°C To 50°C</p> <p>Min. 90 Minutes</p> <p>LED Class 2</p>	<p><b>FULHAM</b></p> <p><b>HOTSPOTLED™</b></p> <p><b>EMERGENCY LED DRIVER</b></p> <p><b>FHS2-UNV-36L</b></p> <p>SUITABLE FOR DRY AND DAMP LOCATIONS</p> <p></p>	<p> </p> <p></p> <p></p> <p><b>EL-T</b></p> <p>● Tc, 77°C Max.</p>	<p>TEST SWITCH (2PIN Connector)</p> <p>BATTERY (3PIN Connector)</p> <p>RED (for LED driver +)</p> <p>LED OUTPUT (4PIN Connector)</p>
<p>ATTENTION: Voir <a href="http://www.fulham.com">www.fulham.com</a> pour les instructions d'installation, d'utilisation et d'entretien. Service par un personnel qualifié uniquement. Débranchez-le avant de l'ouvrir. Pilote doivent être mis à la terre.</p> <p>CAUTION: See <a href="http://www.fulham.com">www.fulham.com</a> for installation, operation and maintenance instructions. Service by qualified personnel only. De-energize before opening.</p>		<p>WARNING: Install in accordance with the national and local electrical code. Disconnect power before servicing. Use 18AWG Copper Wire Only. Driver must be grounded.</p> <p>ATTENTION: L'installation doit être conforme aux normes du code national électrique. Débranchez l'alimentation avant l'entretien.</p>	<p>ATTENTION: Pour le remplacement de la batterie, reportez-vous à modèle de batterie.</p>		

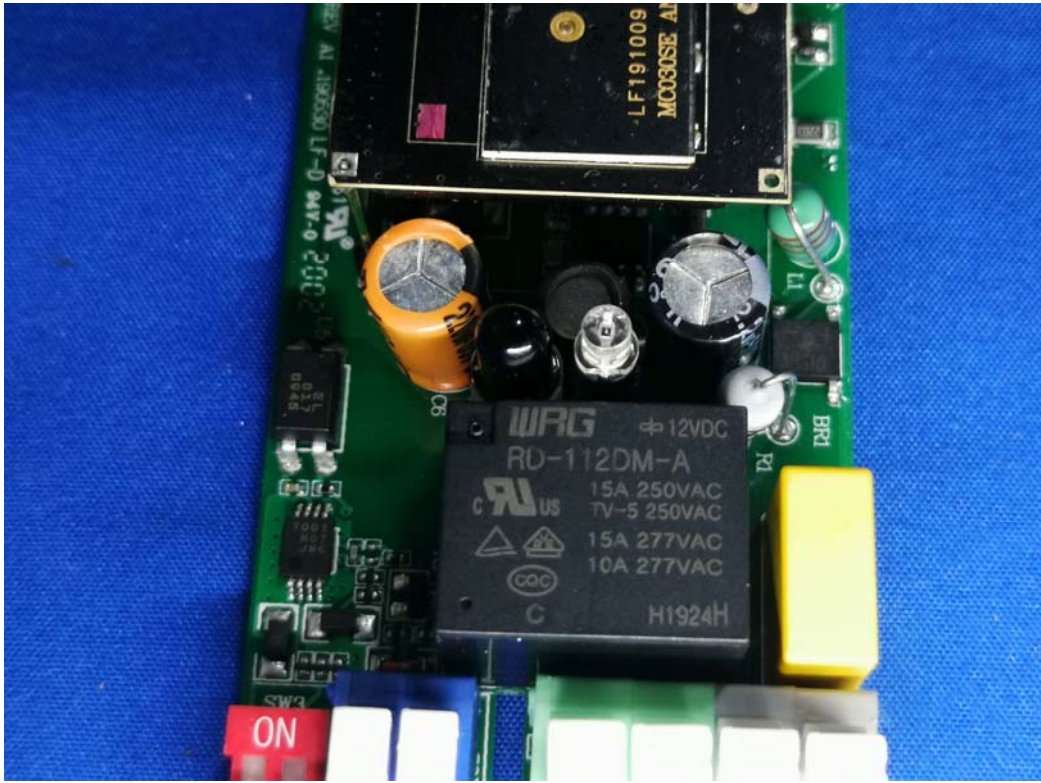


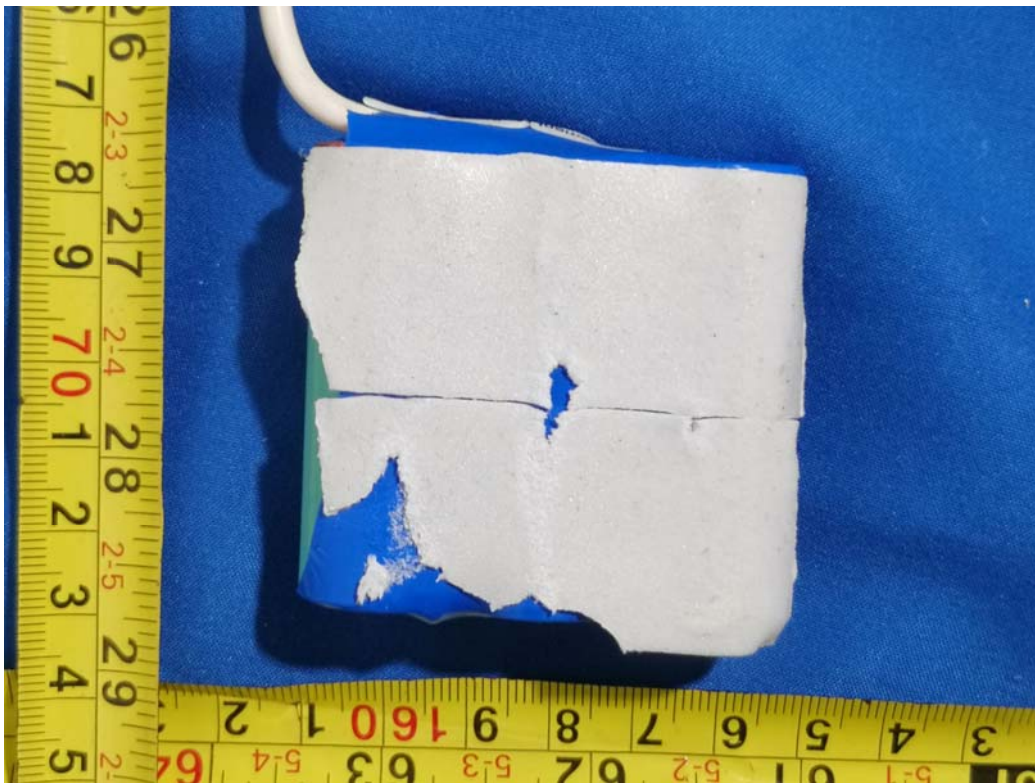




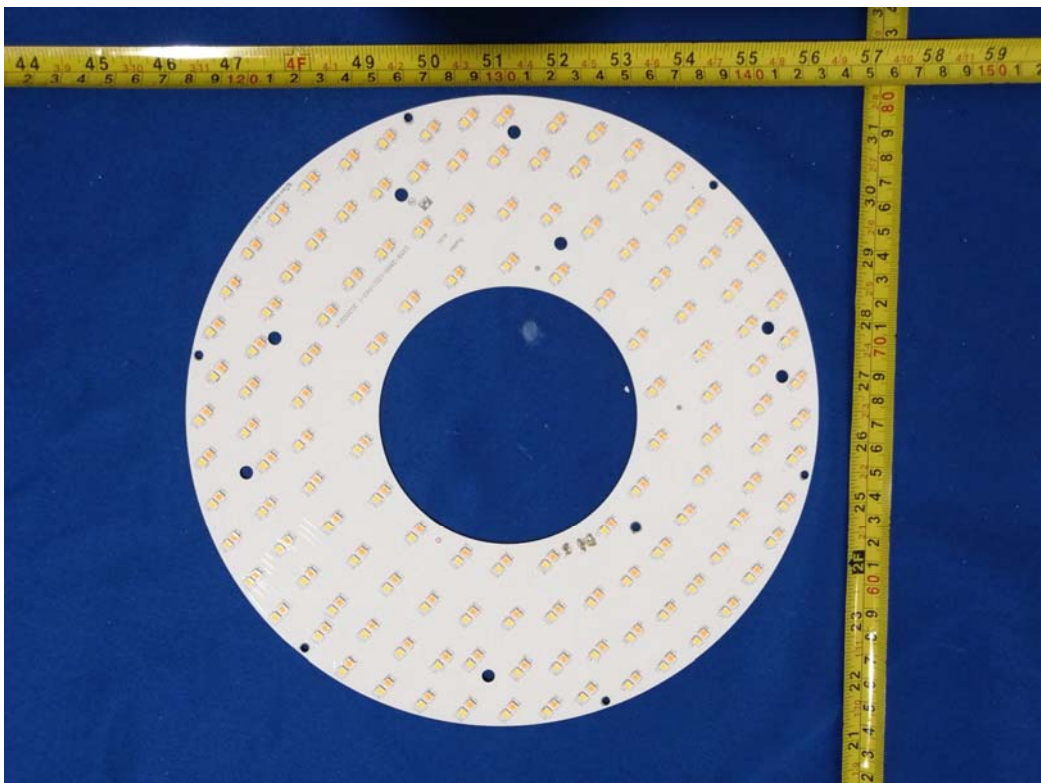
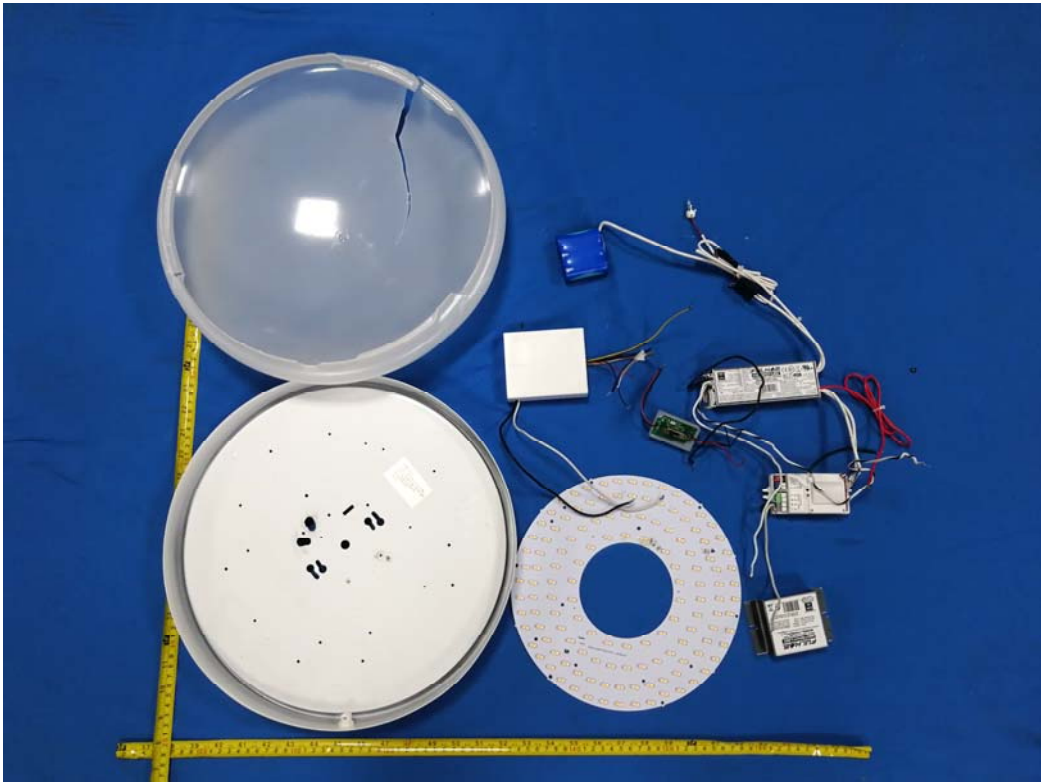
Antenna

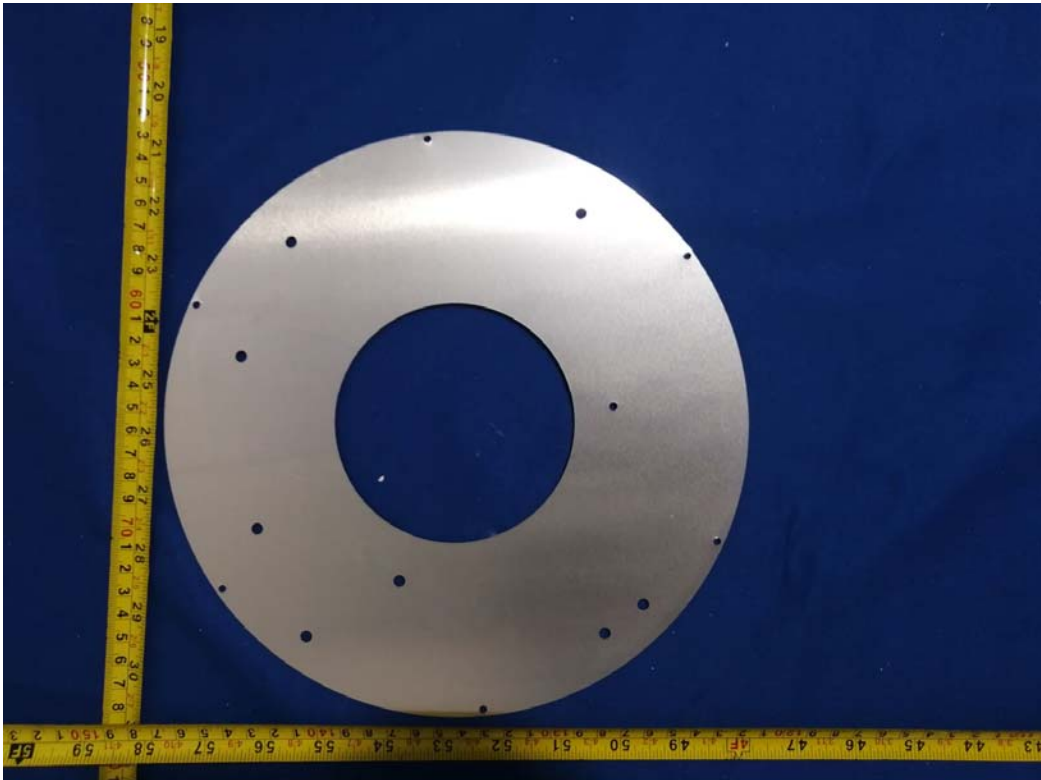


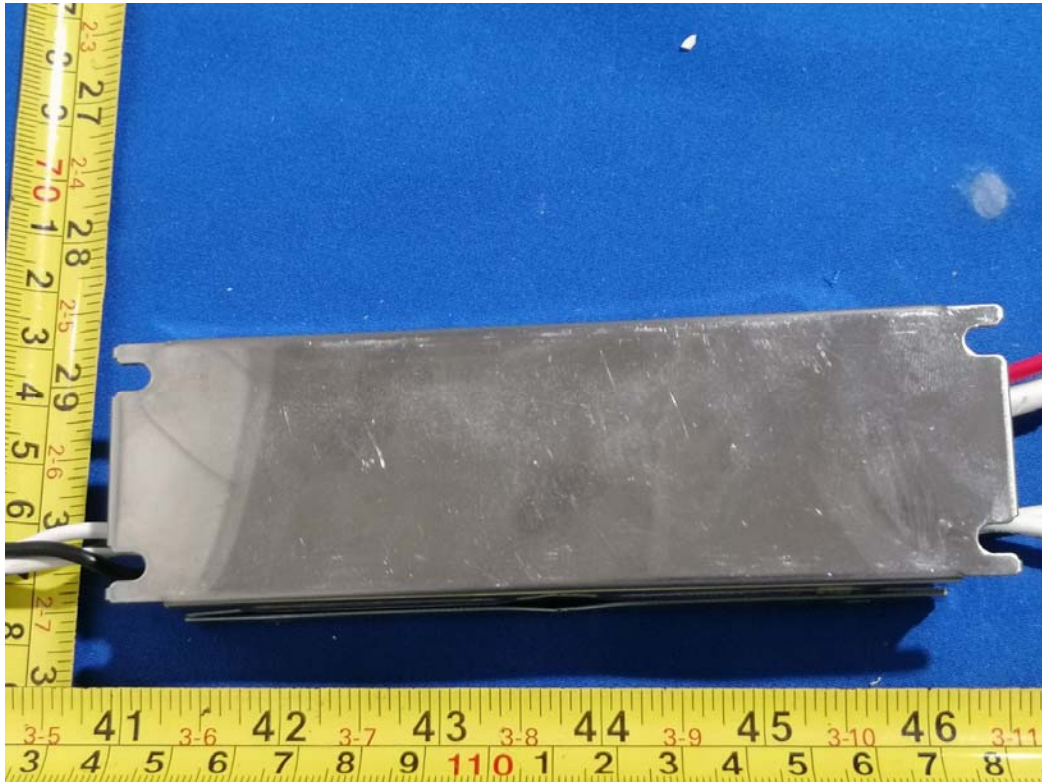




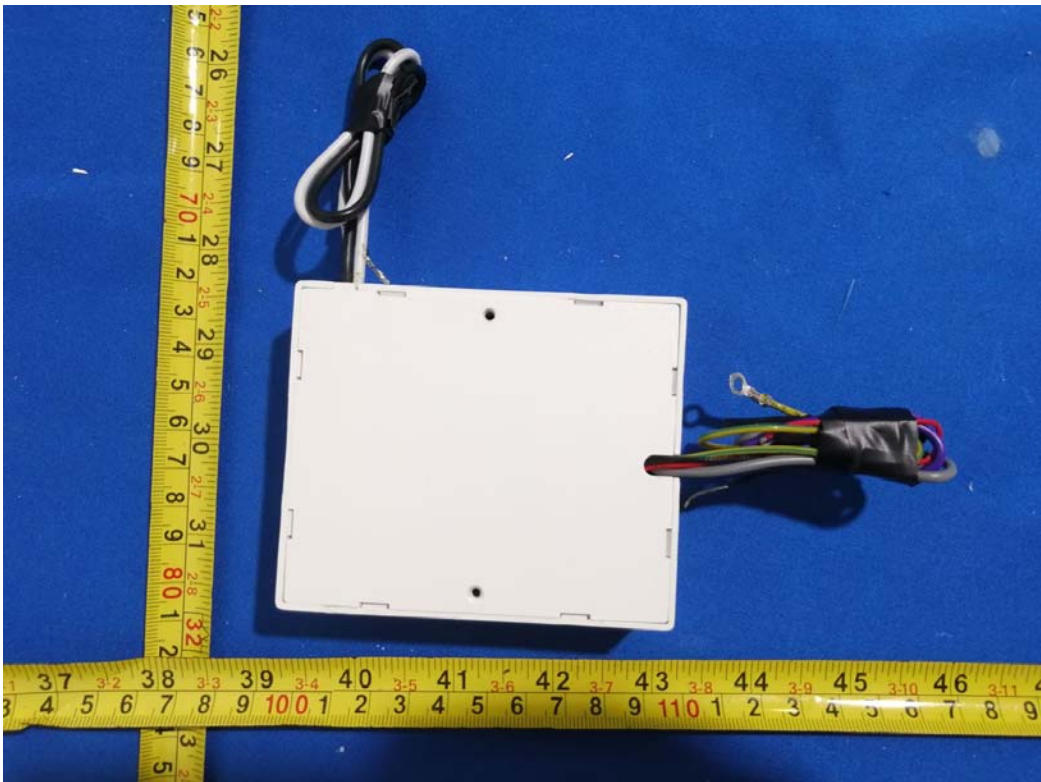
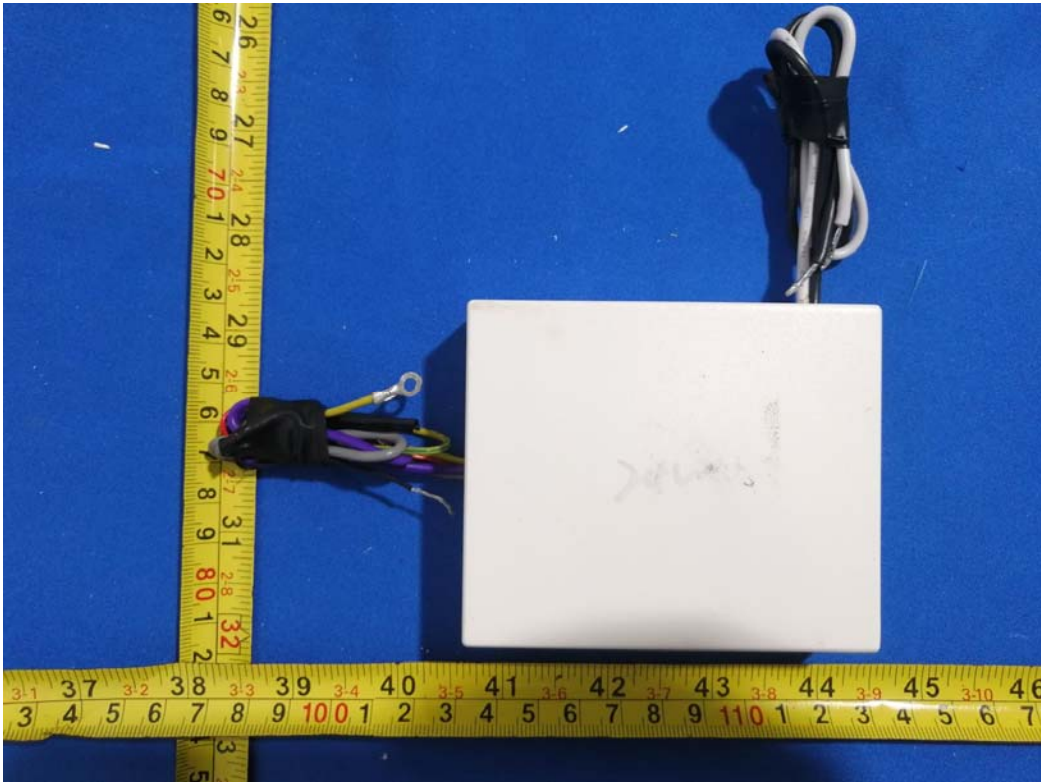
Model: ML2LAMPWHU209CSMSV

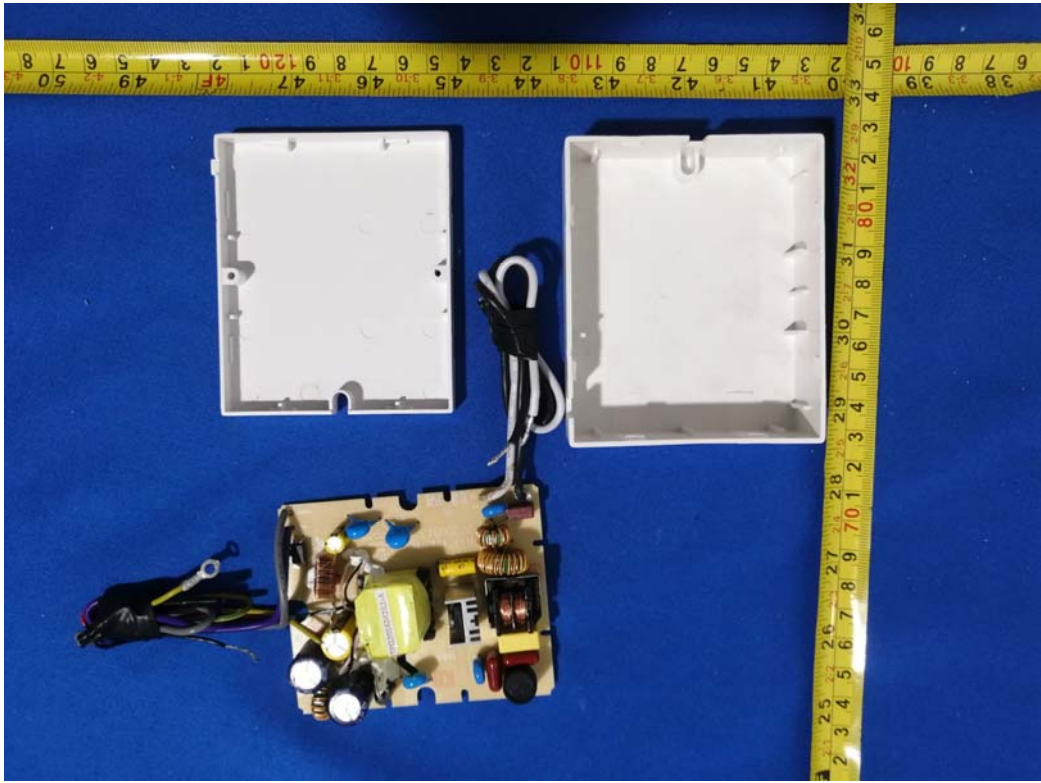


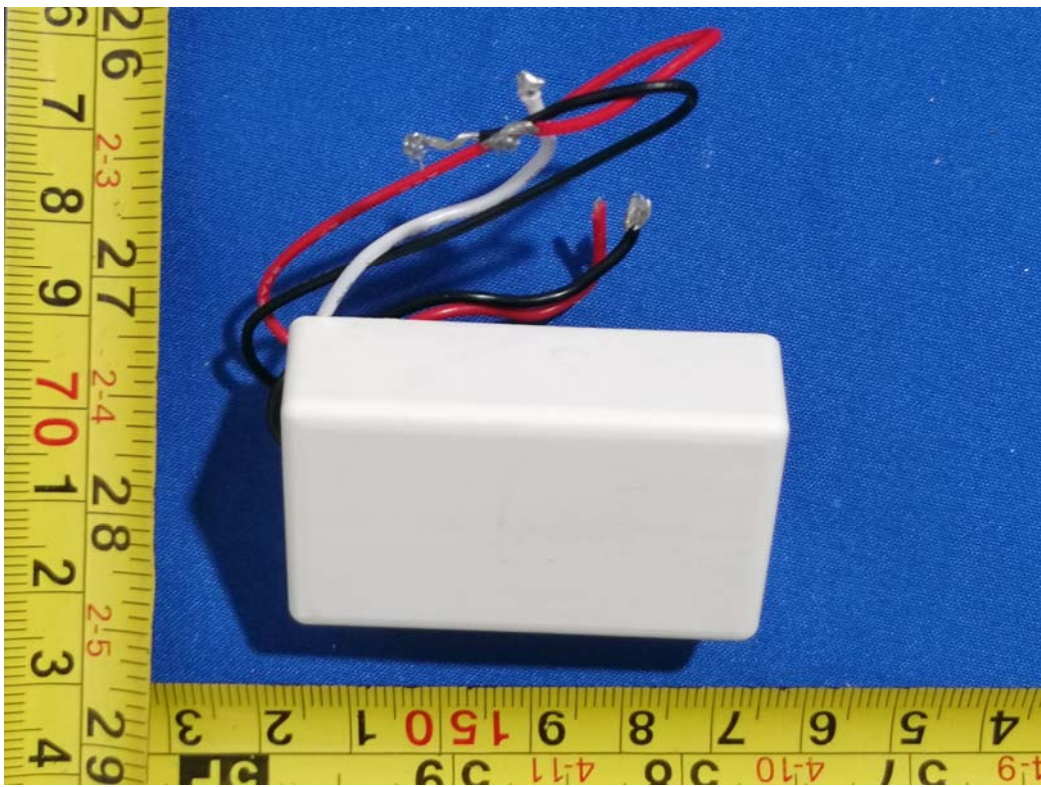
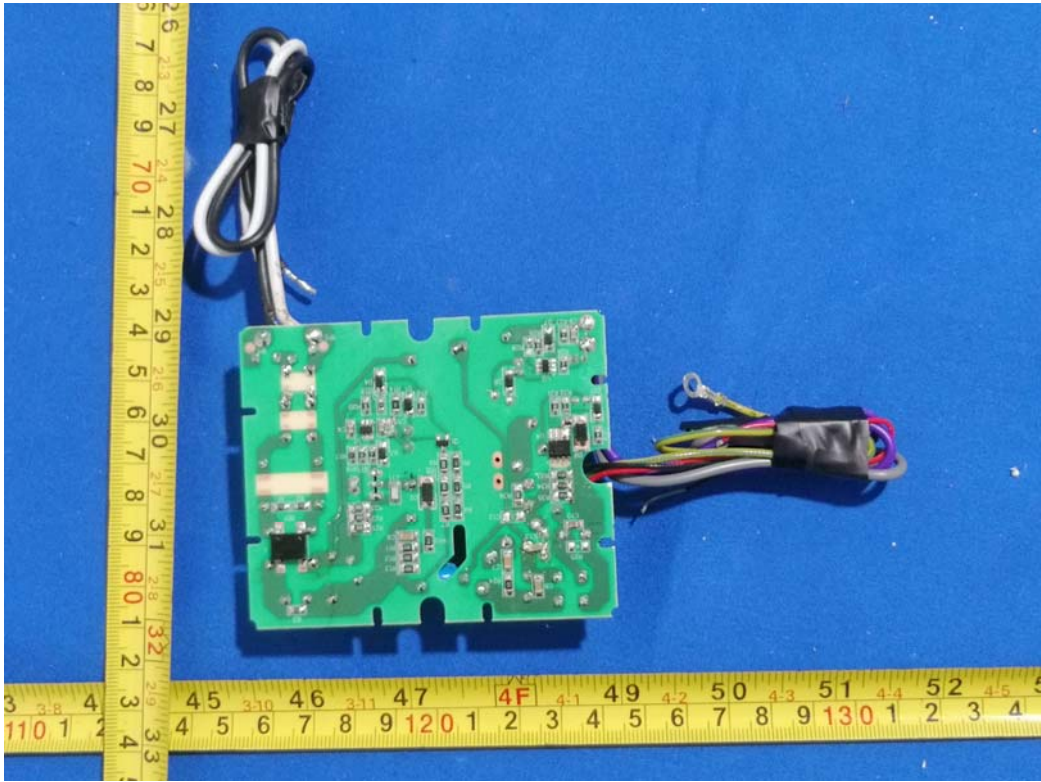


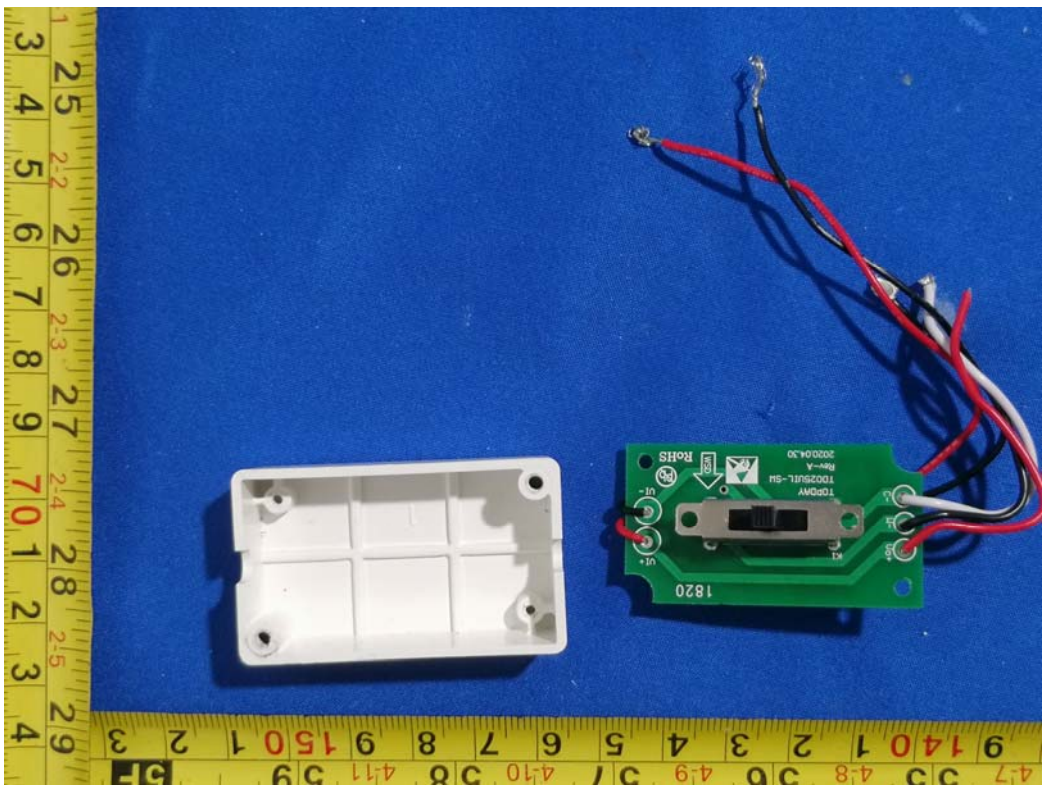
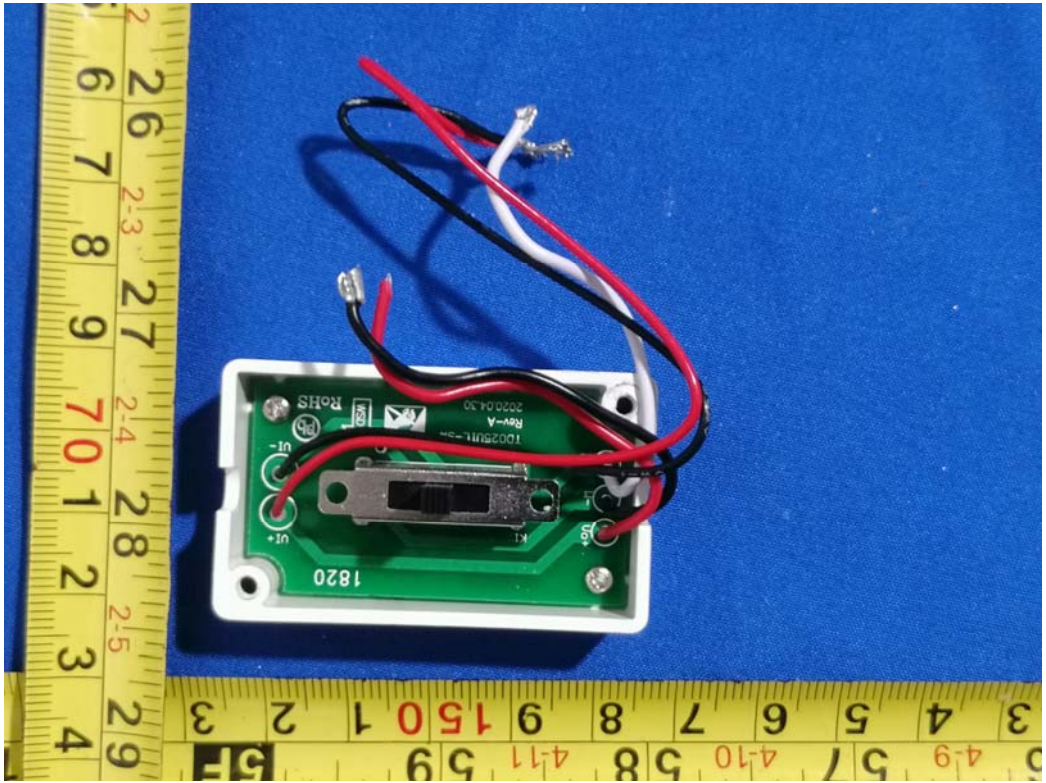


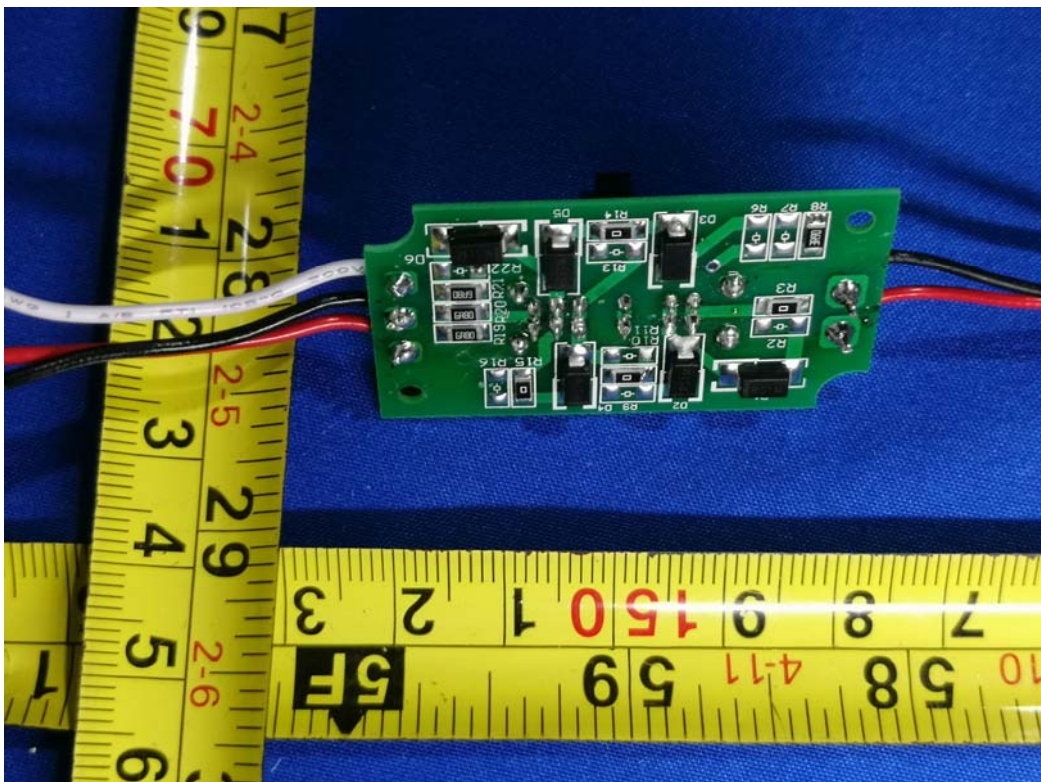
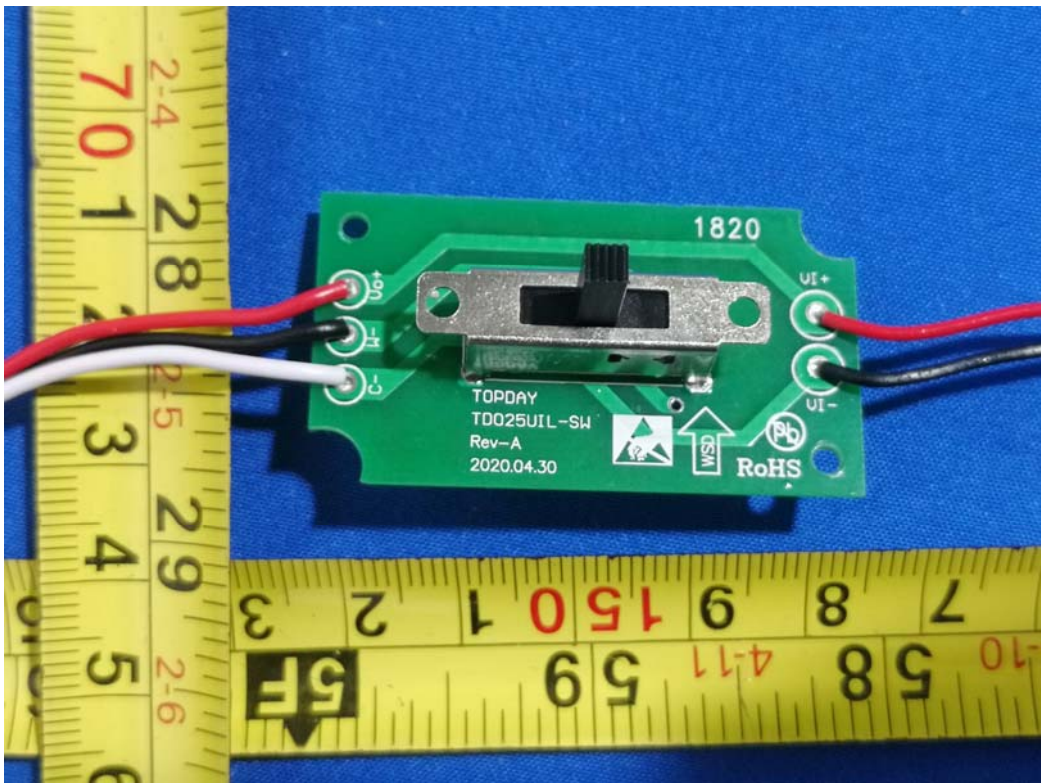


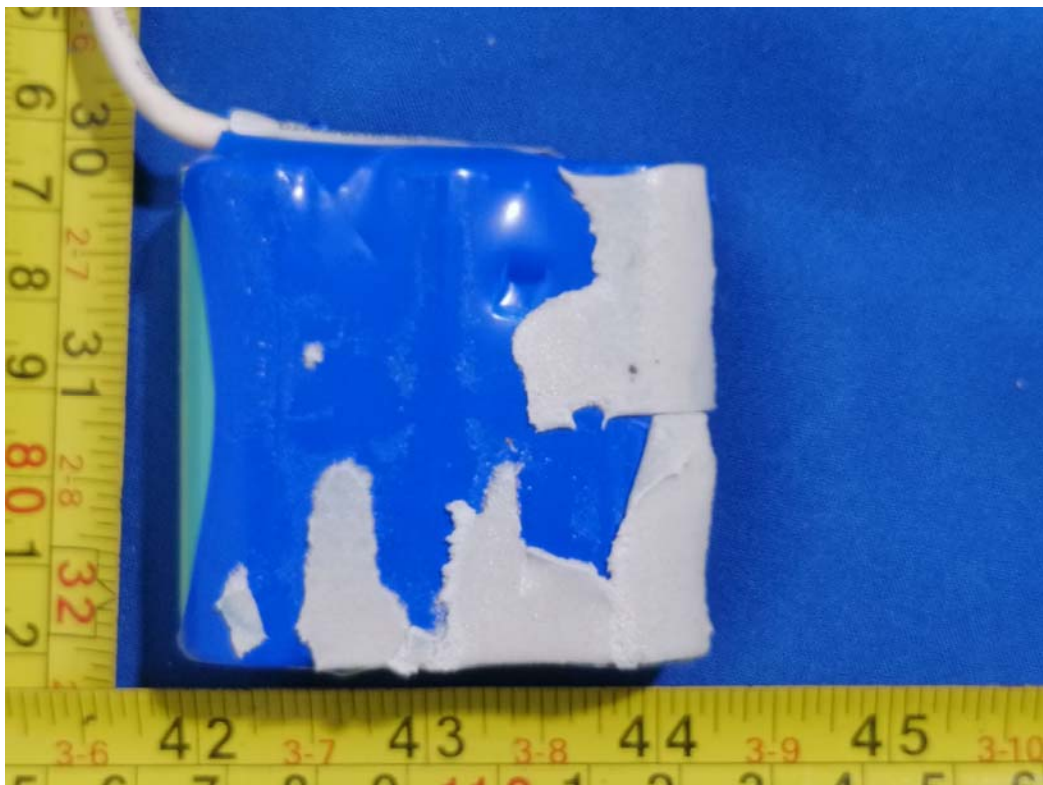


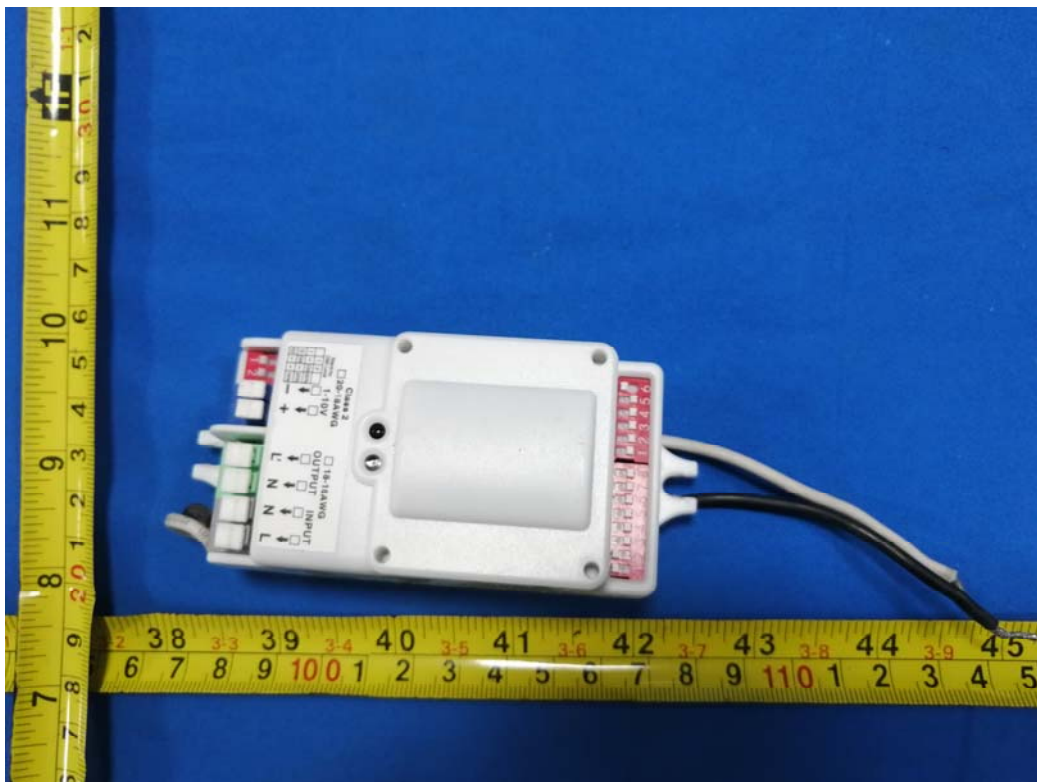


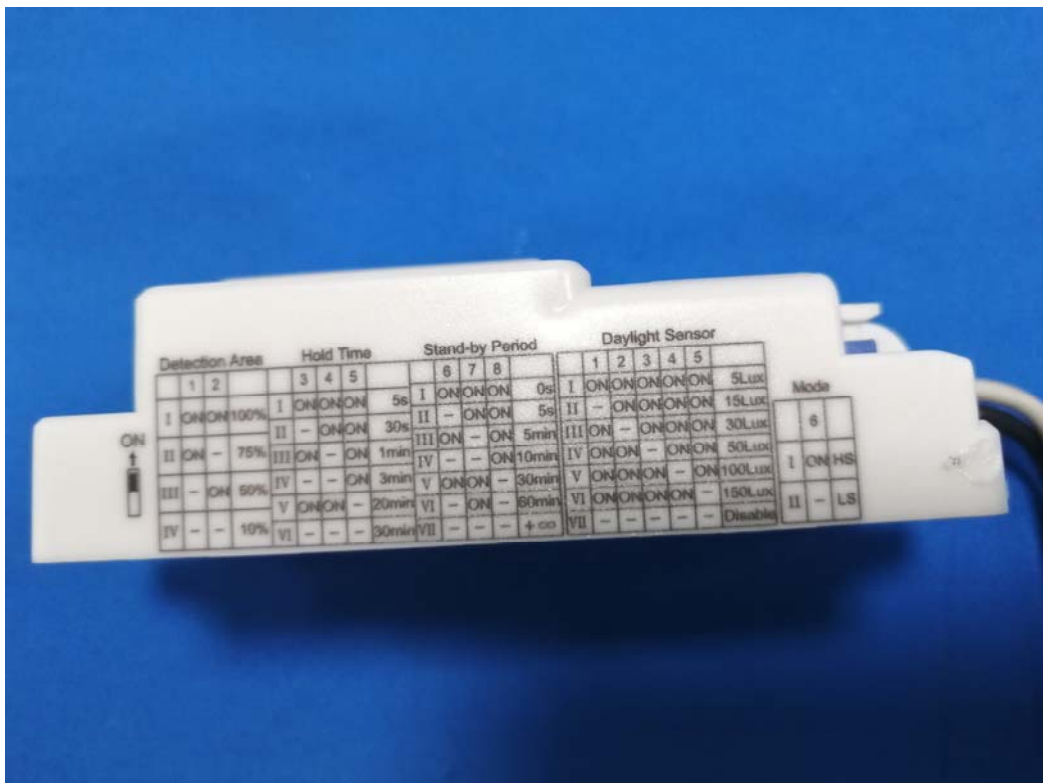
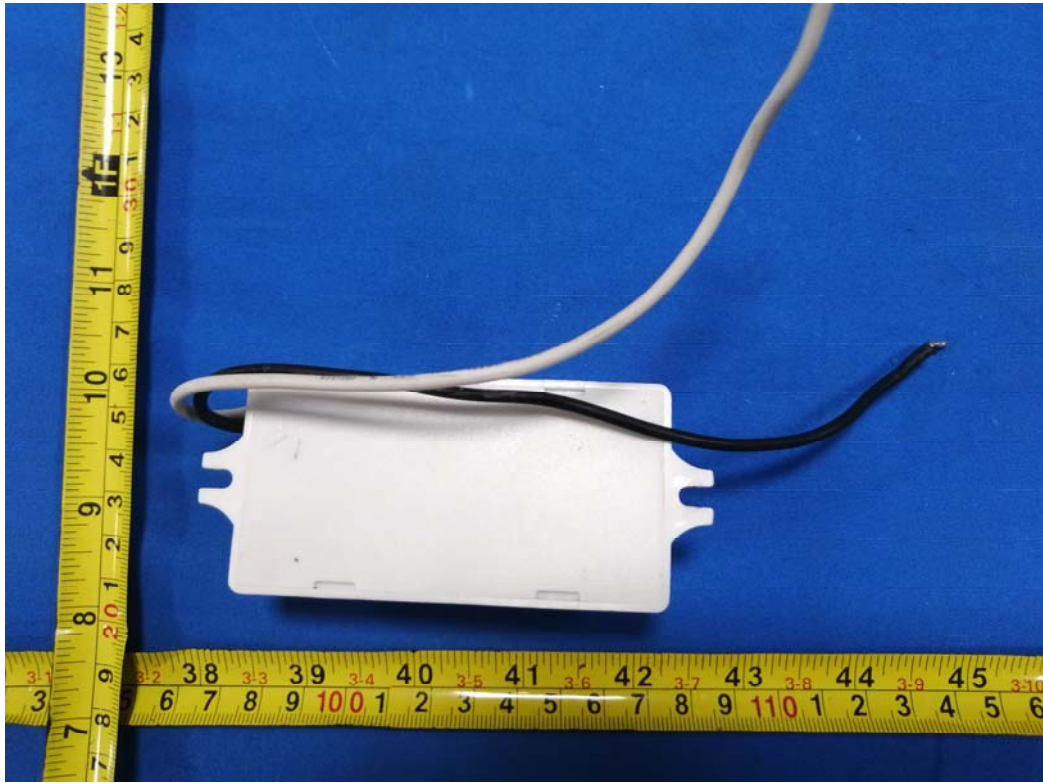




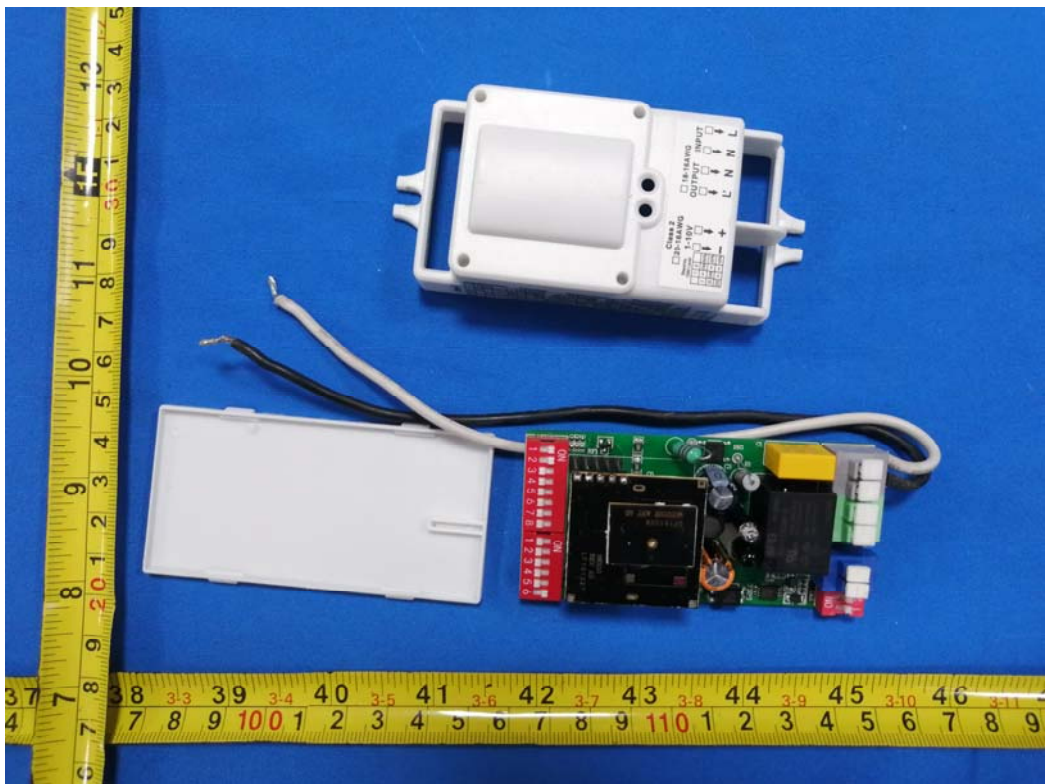


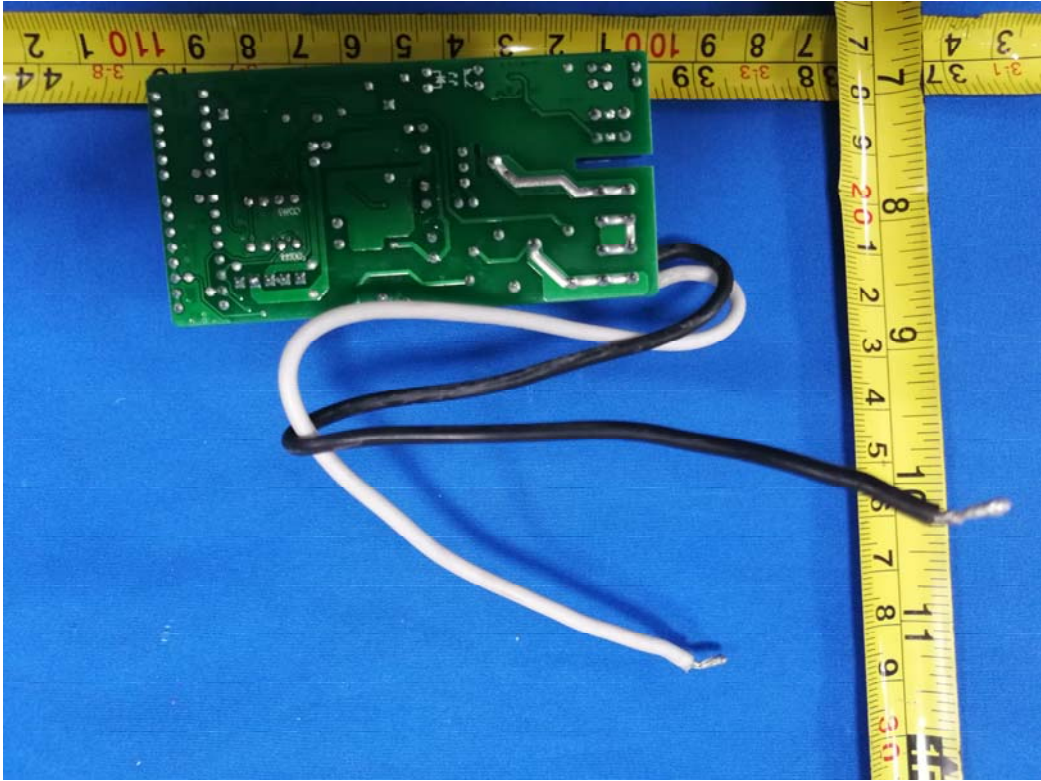












Antenna

