

100 MM

100 MM

Instruction Manual



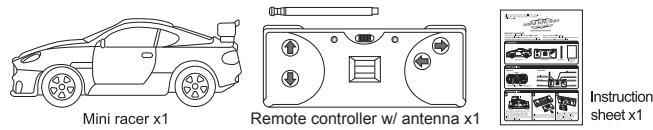
SKU 1672765

PRODUCT FEATURES:

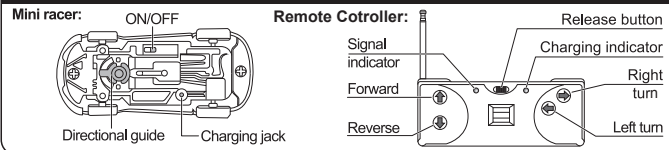
Car run time: 6-10 minutes
Distance: 6-20 meters

Please read the instructions carefully before using.
Save these instructions and packaging.

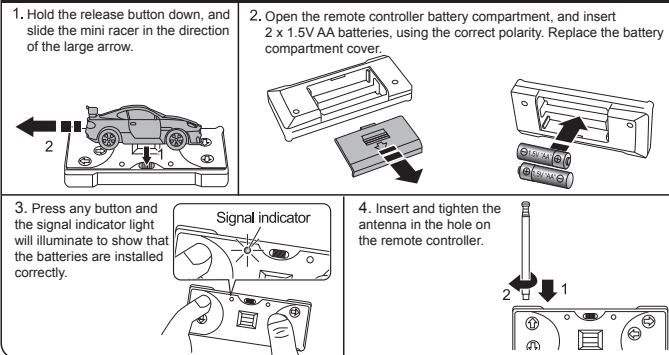
CONTENTS:



PART DETAILS:



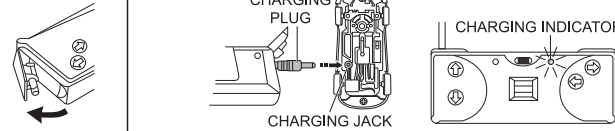
PREPARATION:



Hobby Lobby Stores, Inc. • Oklahoma City, OK 73179 • www.hobbylobby.com

CHARGING THE MINI RACER:

1. Open the charger cover, located on the side of the remote controller.
2. Insert the charging plug into the charging jack, located on the bottom of the mini racer. The indicator light will illuminate when charging is in progress. After 1-2 minutes, the mini racer is fully charged and the indicator light will turn off.

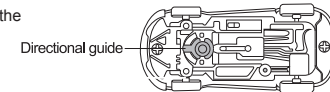


OPERATION:

1. Extend the antenna for better signal reception. Move the ON/OFF switch on the mini racer to ON, and place it on the ground.

2. The remote controller is full-function:
 - (1) The signal indicator lights up when any button on the remote controller is pressed.
 - (2) Press the "up" arrow or the "down" arrow on the remote controller to move the mini racer forward or in reverse.
 - (3) Press the "left" or the "right" arrow on the remote controller while the mini racer is moving to turn right or left.

Note: The directional guide is used to adjust the mini racer's alignment.



FCC:

Caution: Changes or modifications not expressly approved by the party responsible for compliance could void the user's authority to operate the equipment. NOTE: This equipment has been tested and found to comply with the limits for a Class B digital device, pursuant to Part 15 of the FCC Rules. These limits are designed to provide reasonable protection against harmful interference in a residential installation. This equipment generates, uses and can radiate radio frequency energy and, if not installed and used in accordance with the instructions, may cause harmful interference to radio communications. However, there is no guarantee that interference will not occur in a particular installation. If this equipment does cause harmful interference to radio or television reception, which can be determined by turning the equipment off and on, the user is encouraged to try to correct the interference by one or more of the following measures:

- Reorient or relocate the receiving antenna.
- Increase the separation between the equipment and receiver.
- Connect the equipment into an outlet on a circuit different from that to which the receiver is connected.
- Consult the dealer or experienced radio/TV technician for help.

140 MM

140 MM