



PestConnect

Multi Mouse Trap Connect (MMT - 304836) User Guide

Model No: 5000009R

12-12-22 – GSD-100694 Version 1.6

Rentokil
The Experts in Pest Control

- Retrofittable to Tin Cat models from Victor and JT Eaton.
- Retrofittable to Little Pete models from JT Eaton
- Battery Powered
- Reports activations directly to PestNet Online
- Based on RI Connect LongReach 868/915MHz Technology

PestConnect

Introduction to the PestConnect System



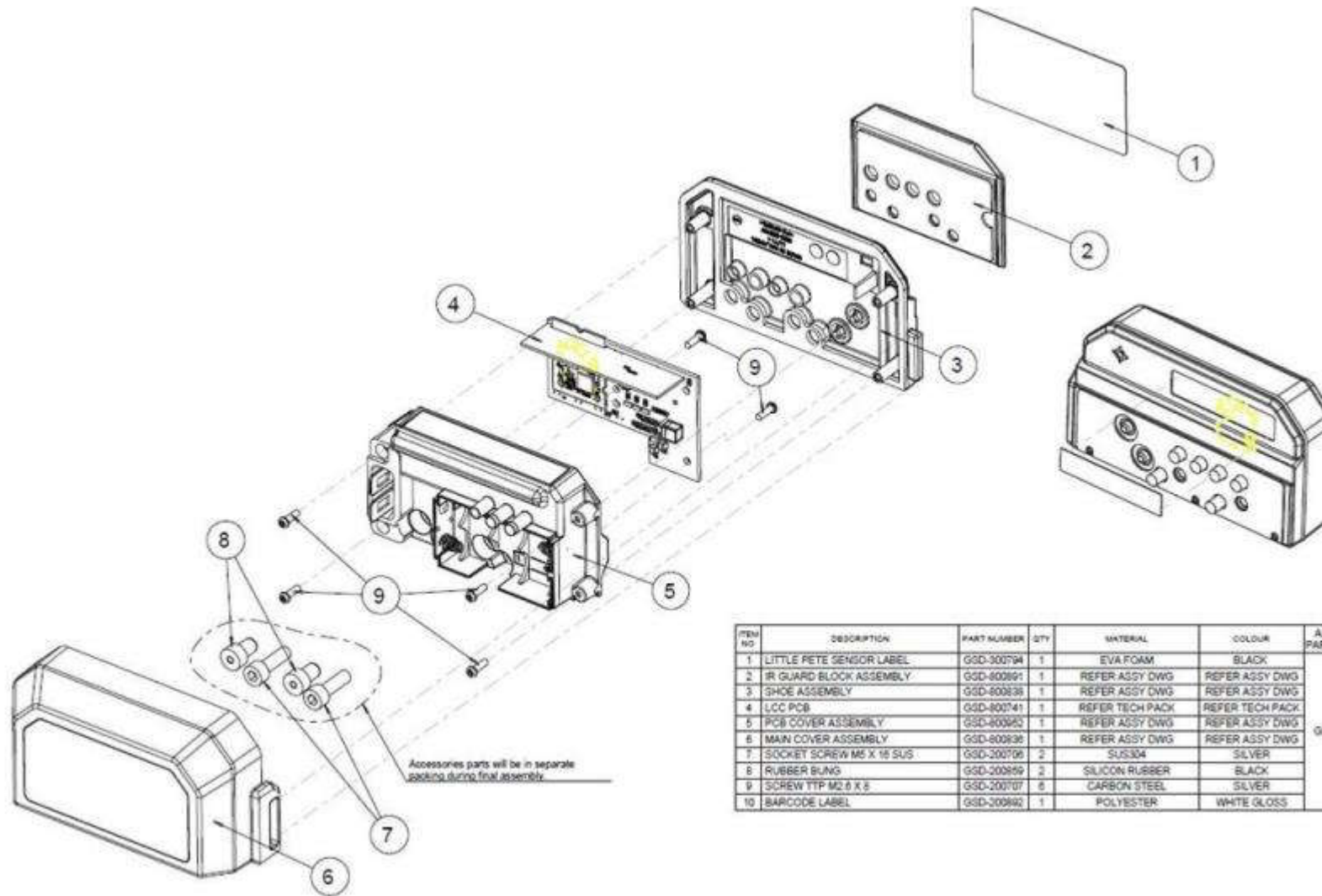
Control Panel



MMT Connect Units



Battery Supply	2 x AA Cell Alkaline Batteries
Dimensions	112mm x 38mm x 60mm
Material	20% Glass Filled PC
Weight	173g
Operating Temperature	-20 to +50 Celcius
Mounting	JT Eaton & Victor TinCat's JT Eaton Little Pete
Standards/Certifications	FCC
IP Rating	IP67



ITEM NO	DESCRIPTION	PART NUMBER	QTY	MATERIAL	COLOR	ASSEMBLY PART NUMBER	SKU NO.
1	LITTLE PETE SENSOR LABEL	GSD-300794	1	EVA FOAM	BLACK		
2	IR GUARD BLOCK ASSEMBLY	GSD-800691	1	REFER ASSY DWG	REFER ASSY DWG		
3	SHOE ASSEMBLY	GSD-800836	1	REFER ASSY DWG	REFER ASSY DWG		
4	LCC PCB	GSD-800741	1	REFER TECH PACK	REFER TECH PACK		
5	PCB COVER ASSEMBLY	GSD-800923	1	REFER ASSY DWG	REFER ASSY DWG		
6	MAIN COVER ASSEMBLY	GSD-800836	1	REFER ASSY DWG	REFER ASSY DWG	GSD-800910	304636
7	SOCKET SCREW M5 X 16 SUS	GSD-200706	2	SUS304	SILVER		
8	RUBBER BUNG	GSD-200959	2	SILICON RUBBER	BLACK		
9	SCREW TTP M2.6 X 8	GSD-200707	6	CARBON STEEL	SILVER		
10	BARCODE LABEL	GSD-200662	1	POLYESTER	WHITE GLOSS		



Infra Red light Sensors scan inside the trap, monitoring for rodent activity.



2 x Hidden until lit LED's show the technician the status of the trap



Battery compartment – housing 2 x AA Alkaline Batteries



NB: For each box of 10 x MMT sensors 1x Pest Key and 2x allen keys will be provided

Install Step 1 – Remove Front Cover using Pest Key



Step 1



Step 2



Step 3

Install Step 3 – Align Infra Red Sensors Lenses to the openings in the trap



Victor Tin Cat



JT Eaton Tin Cat

Infra red sensor lenses align with the traps on the RHS as shown above for Tin Cat.
NB: For Little Pete there is only one alignment option.

Install Step 4 – Bolt Sensor to trap



Victor Tin Cat



JT Eaton Tin Cat

Position LED Lenses to Trap Holes as shown above.



Take the Trap Fixing Bracket and Orientate as shown above.



Place the Trap Fixing Bracket over the LED Lenses and hold together for bolting (see next page).

Install Step 4 – Bolt Sensor to trap



First Bolt

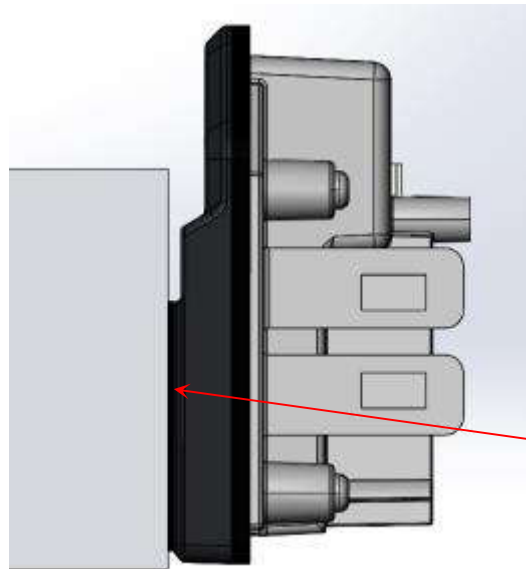


Second Bolt



Bolts Fitted

Tighten bolts using allen key provided or any suitable 8mm allen key.
Please note that the above bolt configuration is for Victor Tin Cat.
Use the other set of holes for bolting the JT Eaton Tin Cat.



Tighten bolts & ensure sensor is securely fitted to the trap. The Sensor should be parallel to trap as shown left.

Install Step 5 – Fit Rubber Bungs

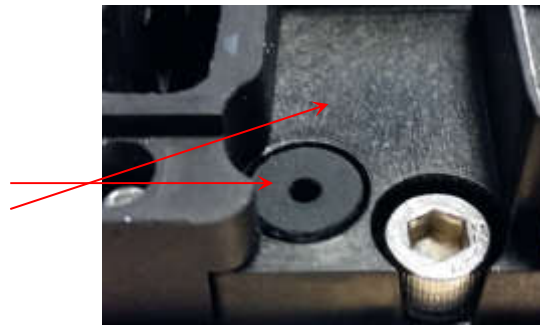
Fit the two supplied rubber bungs to the sensor using the allen key supplied. This is required to close and seal the two unused holes to prevent water ingress (mandatory).

Please note that this bolt configuration is for Victor Tin Cat.

Use the other set of holes for rubber bungs sealing the JT Eaton Tin Cat.



Push the bung firmly down to fully insert as shown. The top of the rubber bung must be level or sub flush to the top surface in both positions.



Install Step 6 – Fit Label to Trap

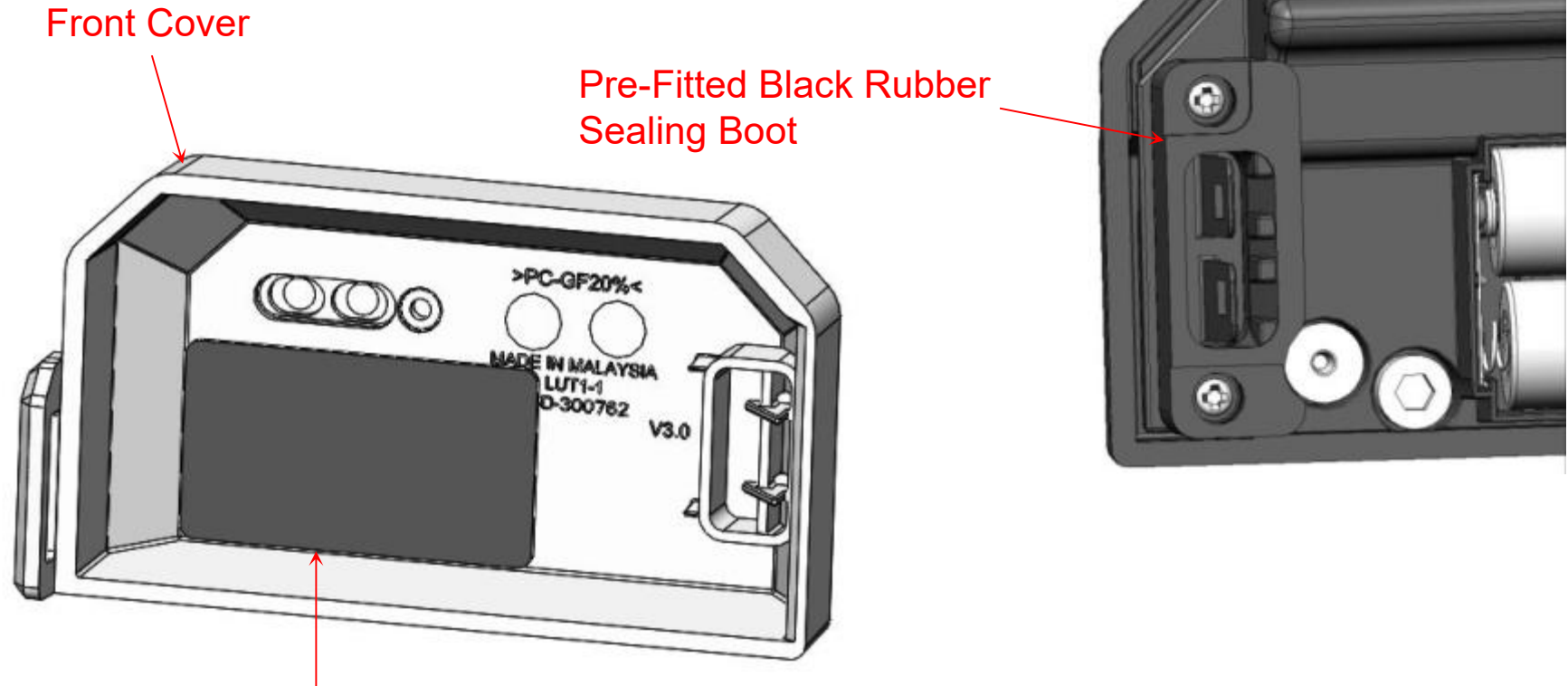
Fit the supplied black label inside the Victor/JT Eaton at the opposite end of the trap from the sensor (mandatory). Peel back the release liner to reveal the adhesive and adhere accordingly. Please note that this configuration (Picture left) is Victor Tin Cat. Identical required for JT Eaton Tin Cat.



Ensure that these two holes remain open.



Step 7 – Rubber Sealing Boot and Front Cover Battery Retention Pad.



Front Cover Battery Retention Pad now comes Pre-Fitted to the Front Cover. Early units didn't have these and they need to be retro fitted. The Front Cover Battery Retention Pad has its own self adhesive backing so remove the release liner and adhere to the Front Cover in position shown above.



Note 1: Only use suitable AA Alkaline Batteries

Note 2: The trap lid **MUST BE CLOSED** during the battery installation to avoid false triggers during the final setup stage, pictures for reference only.