

# User Manual

## 1. Download the latest ios APP

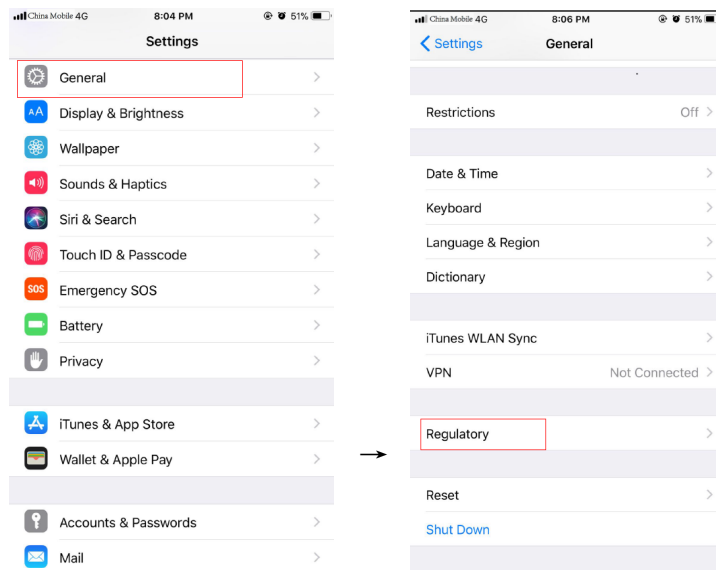
[https://www.pgycer.com/wifi\\_tester?sig=j07urmxIUo%2FMvKxIhtDwQZaeogbXjB9fRL%2FN1sVyT4wses8oyf8rjOf61hC%2BYapC](https://www.pgycer.com/wifi_tester?sig=j07urmxIUo%2FMvKxIhtDwQZaeogbXjB9fRL%2FN1sVyT4wses8oyf8rjOf61hC%2BYapC)

password:keeson

Open the link with Safari browser, enter your password, and install the APP.

- 1) Open the APP. If this error occurs when you open the APP, do the following.

1. **setting**→**general**→**device management**。

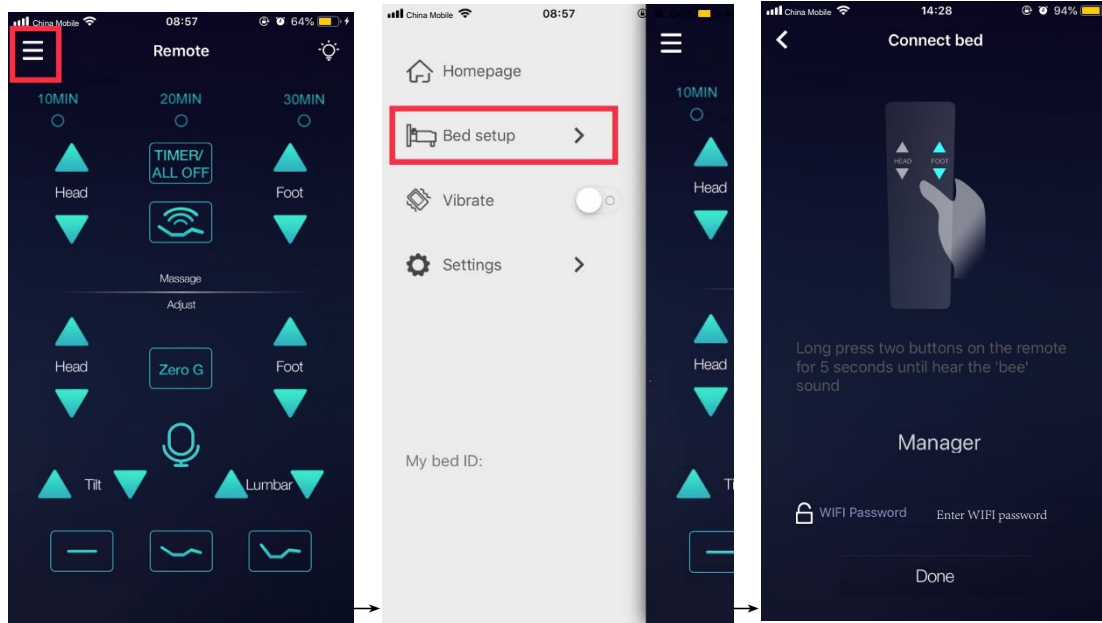


2. **Ergomotion Inc.** → **trust “Ergomotion Inc.”** → **trust**。

## 2. connecting device

- 1) Open system Settings, Connect your phone or ipad to WiFi connection.

- 2) Open the APP and click the top left button of the APP→ Bed setup  
→ Connect bed



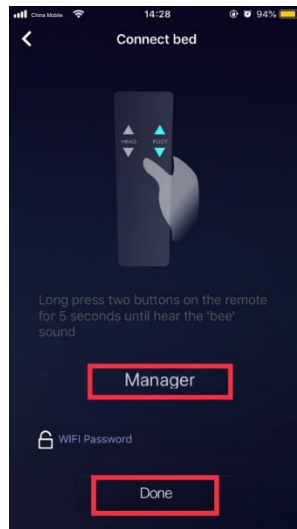
- 3) Press the foot lift and foot drop buttons for five seconds, until WiFiboxmake 'bee'



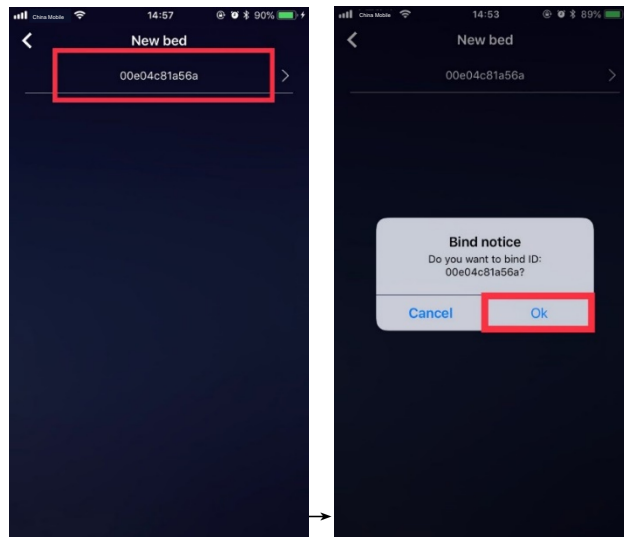
- 4) Open system Settings, Select a WiFi named KS-xxxxxxxxx on your phone or ipad



- 5) Select the wifi signal just connected to, enter password, press done.

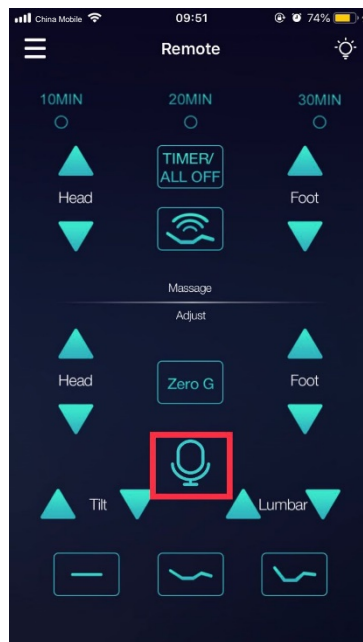


6) Jump to the New bed interface, Bed id appears after waiting for a while. Click bed id to bind.

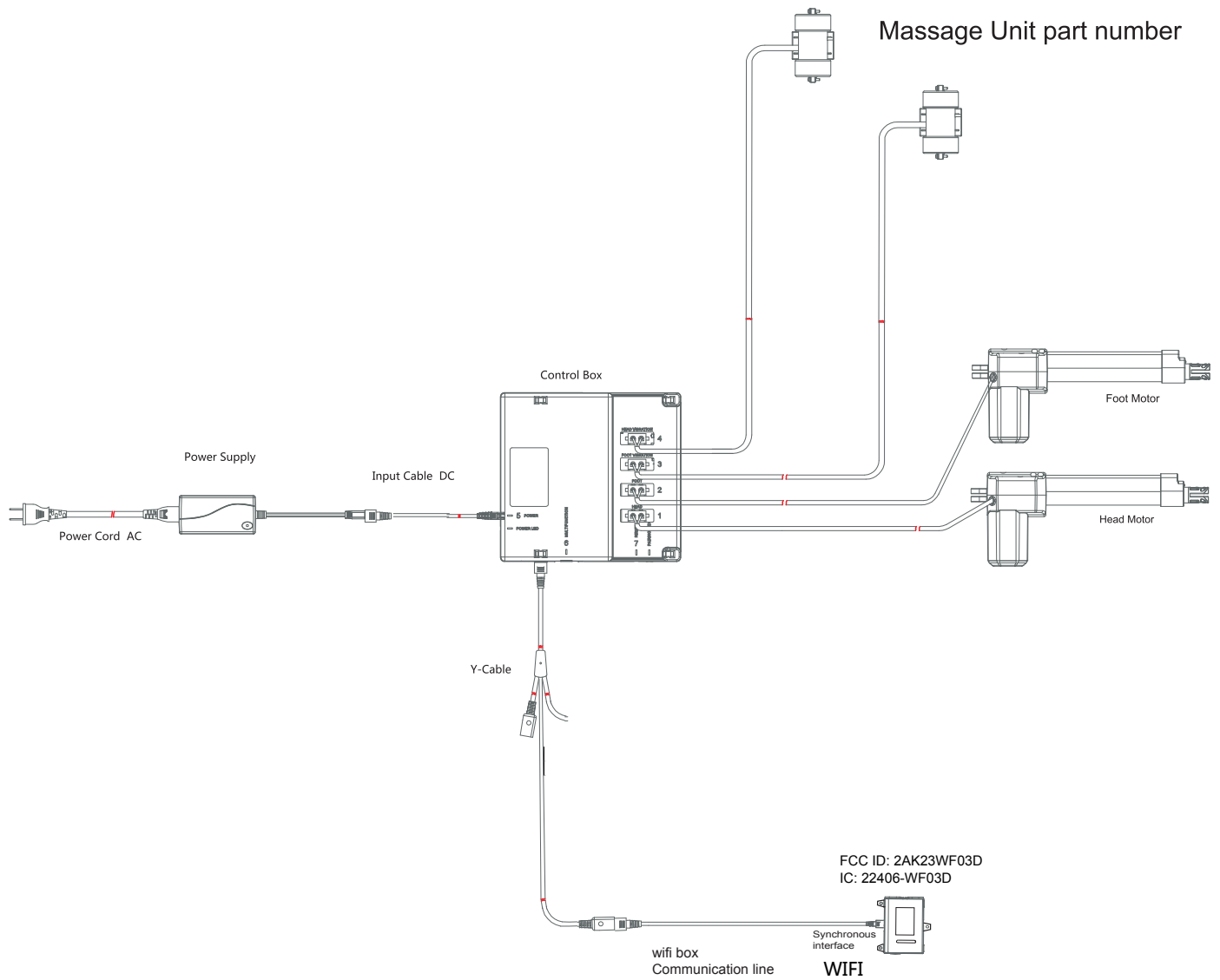


### 3. Device control

1) Click the voice control button in the red box, The head will go up for 3 seconds



# Electrical configuration diagram:



#### FCC Statement

Any Changes or modifications not expressly approved by the party responsible for compliance could void the user's authority to operate the equipment.

This device complies with part 15 of the FCC Rules. Operation is subject to the following two conditions: (1) This device may not cause harmful interference, and (2) This device must accept any interference received, including interference that may cause undesired operation.

#### FCC Radiation Exposure Statement:

This equipment complies with FCC radiation exposure limits set forth for an uncontrolled environment. This equipment should be installed and operated with minimum distance 20cm between the radiator & your body.

#### ISED RSS Warning:

This device complies with Innovation, Science and Economic Development Canada licence-exempt RSS standard(s). Operation is subject to the following two conditions: (1) this device may not cause interference, and (2) this device must accept any interference, including interference that may cause undesired operation of the device.

Le présent appareil est conforme aux CNR d'ISED applicables aux appareils radio exempts de licence. L'exploitation est autorisée aux deux conditions suivantes:

- (1) l'appareil ne doit pas produire de brouillage, et
- (2) l'utilisateur de l'appareil doit accepter tout brouillage radioélectrique subi, même si le brouillage est susceptible d'en compromettre le fonctionnement.

#### ISED RF exposure statement:

This equipment complies with ISED radiation exposure limits set forth for an uncontrolled environment. This equipment should be installed and operated with minimum distance 20cm between the radiator & your body. This transmitter must not be co-located or operating in conjunction with any other antenna or transmitter.

Le rayonnement de la classe B respecte ISED fixaient un environnement non contrôlés. Installation et mise en œuvre de ce matériel devrait avec échangeur distance minimale entre 20 cm ton corps. Lanceurs ou ne peuvent pas coexister cette antenne ou capteurs avec d'autres.