

**KEESON CONTROL BOX**

MODEL NO.: MC122 SW:V1.0

Input: 29V  $\overline{\text{=}}$  1.8A 52W

Output: 29V  $\overline{\text{=}}$  max.400mA

5 switching cycles per minute

Serial-No.: 6800144815X181110001



JLDP:15.016.001

FCC ID:2AK23MC122

IC:22408-MC122

IP20



C **RU** US  
E317288  
FID:X

Indoor use only

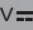
Keeson Technology Corporation Limited



**KEESON CONTROL BOX**

MODEL NO.: MC122BS SW:V1.0

Input: 29V  1.8A 52W

Output: 29V  max.400mA

5 switching cycles per minute

Serial-No.: 6800144815X181110001



JLDP:15.016.001

FCC ID:2AK23MC122

IC:22406-MC122



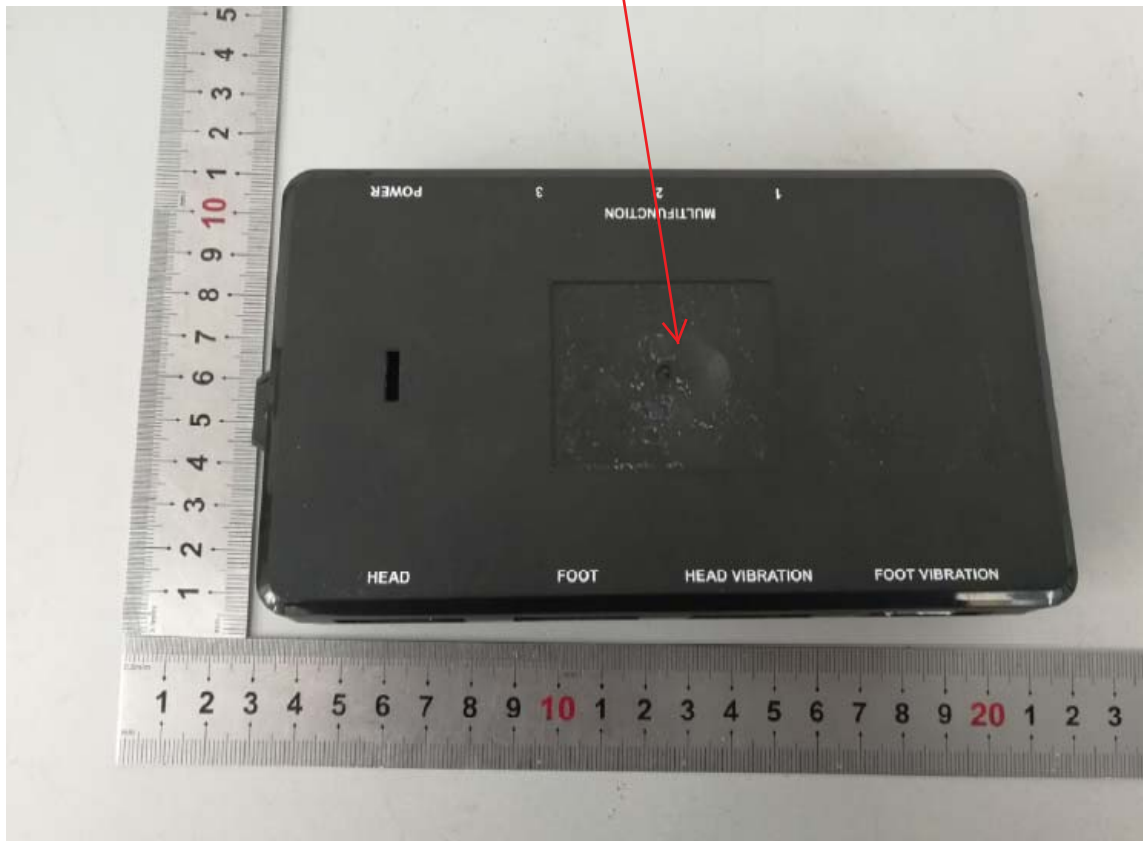
**IP20**

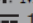




Indoor use only



FID:X


Keeson Technology Corporation Limited




**KEESON CONTROL BOX**  
MODEL NO.: MC122TS SW:V1.0  
Input: 29V  1.8A 52W  
Output: 29V  max.400mA  
5 switching cycles per minute  
Serial-No.: 6800144815X181110001  
  
JLDP.15.016.001  
FCC ID:2AK23MC122  
IC:22406-MC122  
   
Indoor use only  
Keeson Technology Corporation Limited




**KEESON CONTROL BOX**  
MODEL NO.: MC122SP SW:V1.0  
Input: 29V  $\overline{=}$  1.8A 52W  
Output: 29V  $\overline{=}$  max.400mA  
5 switching cycles per minute  
Serial-No.: 6800144815X181110001



JLDP.15.016.001  
FCC ID:2AK23MC122  
IC:22406-MC122

 **IP20**  
Indoor use only

 **UL US**  
E317288  
FID:X

Keeson Technology Corporation Limited



**KEESON CONTROL BOX**

MODEL NO.: MC122KL SW:V1.0

Input: 29V  $\equiv$  1.8A 52W

Output: 29V  $\equiv$  max.400mA

5 switching cycles per minute

Serial-No.: 6800144815X181110001



JLDP.15.016.001

FCC ID:2AK23MC122

IC:22406-MC122



**IP20**

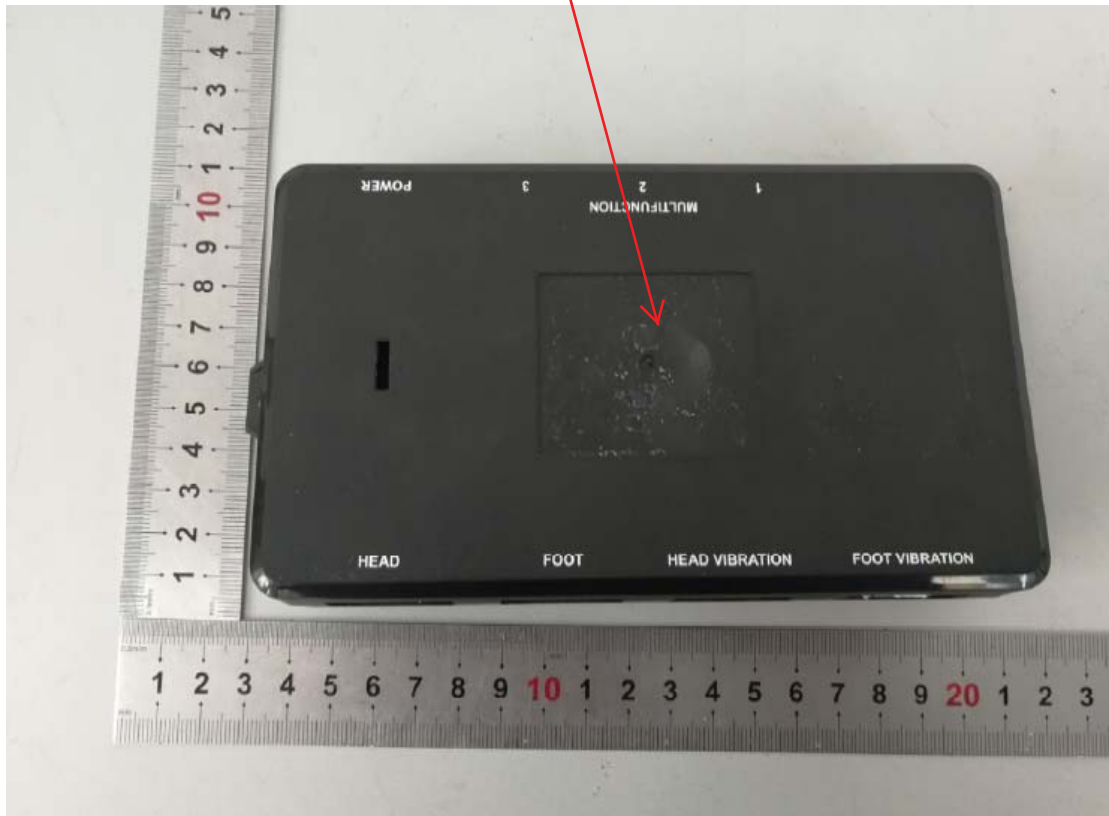
Indoor use only




E317288

FID:X


Keeson Technology Corporation Limited




**KEESON CONTROL BOX**  
MODEL NO.: MC122LT SW:V1.0  
Input: 29V  $\overline{=}$  1.8A 52W  
Output: 29V  $\overline{=}$  max.400mA  
5 switching cycles per minute  
Serial-No.: 6800144815X181110001



JLDP-15.016.001  
FCC ID:2AK23MC122  
IC:22406-MC122


 **IP20**  
Indoor use only  
Keeson Technology Corporation Limited

 **UL**  
E317288  
FID-X



**KEESON CONTROL BOX**

MODEL NO.: MC122BK SW:V1.0

Input: 29V  1.8A 52W

Output: 29V  max.400mA

5 switching cycles per minute

Serial-No.: 6800144815X181110001



JLDP.15.016.001

FCC ID:2AK23MC122

IC:22406-MC122



Indoor use only



FID:X

Keeson Technology Corporation Limited

