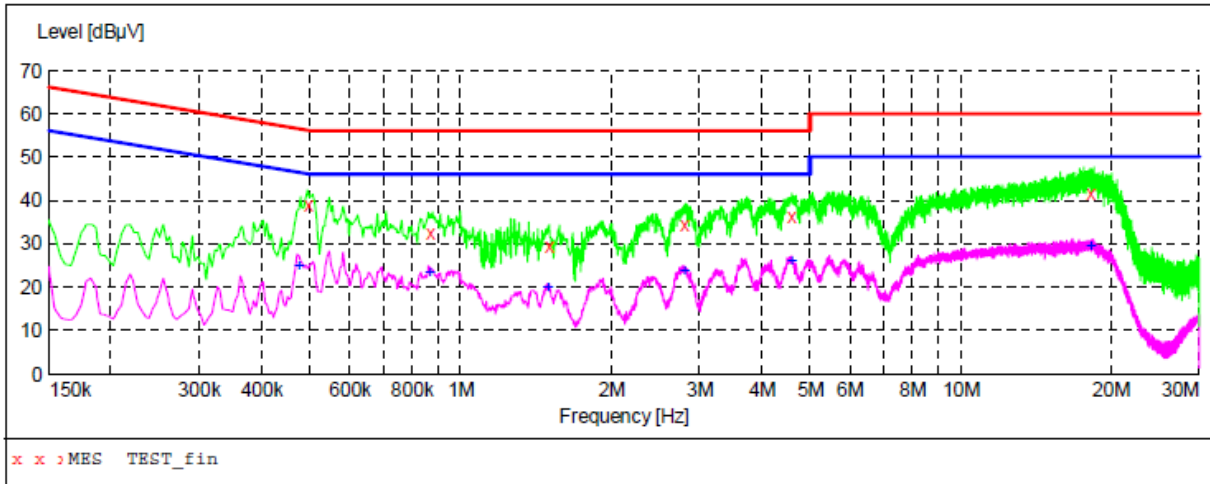


Line Conducted Emission Test Line 2-N



MEASUREMENT RESULT: "TEST_fin"

| Frequency MHz | Level dBuV | Transd dB | Limit dBuV | Margin dB | Detector | Line | PE |
|---------------|------------|-----------|------------|-----------|----------|------|-----|
| 0.494000 | 39.00 | 10.3 | 56 | 17.1 | QP | N | FLO |
| 0.866000 | 32.40 | 10.4 | 56 | 23.6 | QP | N | FLO |
| 1.494000 | 29.40 | 10.4 | 56 | 26.6 | QP | N | FLO |
| 2.798000 | 34.20 | 10.4 | 56 | 21.8 | QP | N | FLO |
| 4.582000 | 36.50 | 10.4 | 56 | 19.5 | QP | N | FLO |
| 18.178000 | 41.50 | 11.0 | 60 | 18.5 | QP | N | FLO |

MEASUREMENT RESULT: "TEST_fin2"

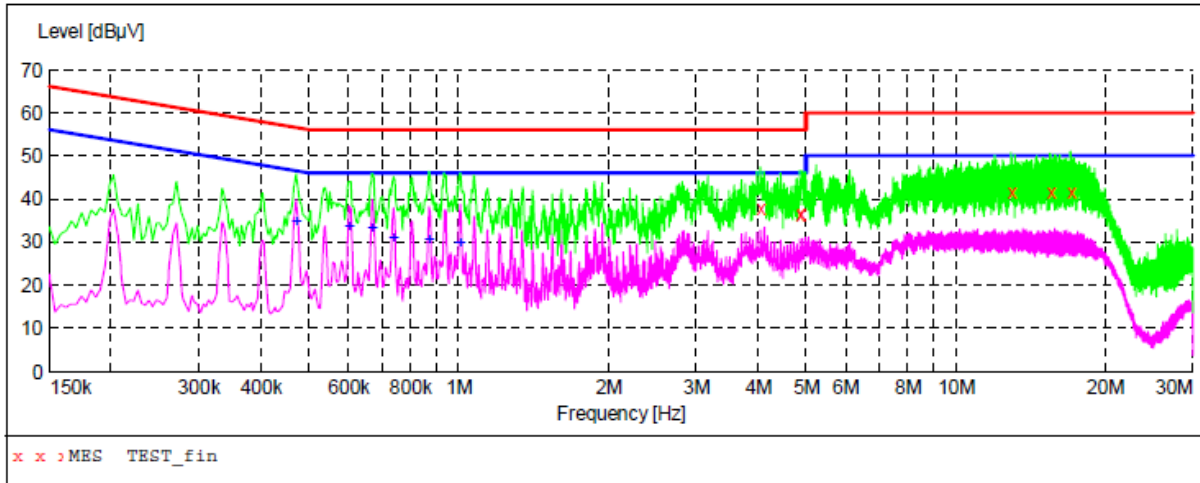
| Frequency MHz | Level dBuV | Transd dB | Limit dBuV | Margin dB | Detector | Line | PE |
|---------------|------------|-----------|------------|-----------|----------|------|-----|
| 0.474000 | 25.00 | 10.3 | 46 | 21.4 | AV | N | FLO |
| 0.866000 | 23.20 | 10.4 | 46 | 22.8 | AV | N | FLO |
| 1.494000 | 19.90 | 10.4 | 46 | 26.1 | AV | N | FLO |
| 2.798000 | 23.90 | 10.4 | 46 | 22.1 | AV | N | FLO |
| 4.582000 | 25.80 | 10.4 | 46 | 20.2 | AV | N | FLO |
| 18.178000 | 29.40 | 11.0 | 50 | 20.6 | AV | N | FLO |

RESULT: PASS

Note: All the test modes had been tested, the mode 1 was the worst case. Only the data of the worst case would be record in this test report.

The results shown in this test report refer only to the sample(s) tested unless otherwise stated and the sample(s) are retained for 30 days only. The document is issued by AGC, this document cannot be reproduced except in full with our prior written permission. The more details and the authenticity of the report will be confirmed at <http://www.agc-cert.com>.

The model name of SA214
Line Conducted Emission Test Line 1-L



MEASUREMENT RESULT: "TEST_fin"

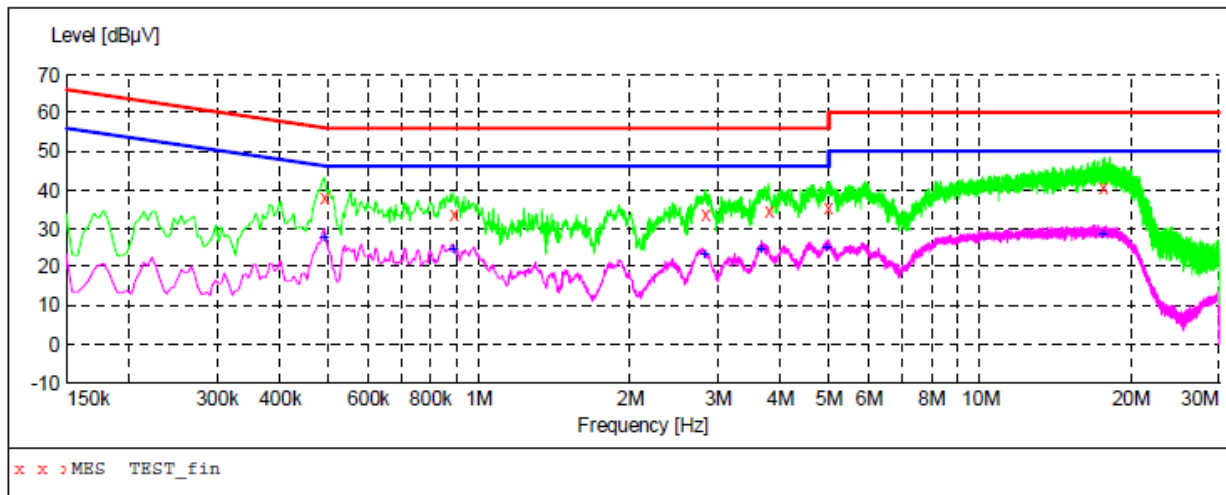
| Frequency MHz | Level dBµV | Transd dB | Limit dBµV | Margin dB | Detector | Line | PE |
|---------------|------------|-----------|------------|-----------|----------|------|-----|
| 4.042000 | 38.00 | 10.4 | 56 | 18.0 | QP | L1 | FLO |
| 4.846000 | 36.30 | 10.4 | 56 | 19.7 | QP | L1 | FLO |
| 4.870000 | 36.70 | 10.4 | 56 | 19.3 | QP | L1 | FLO |
| 12.926000 | 41.40 | 10.8 | 60 | 18.6 | QP | L1 | FLO |
| 15.502000 | 41.80 | 10.9 | 60 | 18.2 | QP | L1 | FLO |
| 17.018000 | 41.50 | 10.9 | 60 | 18.5 | QP | L1 | FLO |

MEASUREMENT RESULT: "TEST_fin2"

| Frequency MHz | Level dBµV | Transd dB | Limit dBµV | Margin dB | Detector | Line | PE |
|---------------|------------|-----------|------------|-----------|----------|------|-----|
| 0.470000 | 34.60 | 10.3 | 47 | 11.9 | AV | L1 | FLO |
| 0.602000 | 33.50 | 10.3 | 46 | 12.5 | AV | L1 | FLO |
| 0.670000 | 33.20 | 10.3 | 46 | 12.8 | AV | L1 | FLO |
| 0.738000 | 31.20 | 10.3 | 46 | 14.8 | AV | L1 | FLO |
| 0.870000 | 30.60 | 10.4 | 46 | 15.4 | AV | L1 | FLO |
| 1.006000 | 29.80 | 10.4 | 46 | 16.2 | AV | L1 | FLO |

The results shown in this test report refer only to the sample(s) tested unless otherwise stated and the sample(s) are retained for 30 days only. The document is issued by AGC, this document cannot be reproduced except in full with our prior written permission. The more details and the authenticity of the report will be confirmed at <http://www.agc-cert.com>.

Line Conducted Emission Test Line 2-N



MEASUREMENT RESULT: "TEST_fin"

| Frequency MHz | Level dBuV | Transd dB | Limit dBuV | Margin dB | Detector | Line | PE |
|---------------|------------|-----------|------------|-----------|----------|------|-----|
| 0.490000 | 38.20 | 10.3 | 56 | 18.0 | QP | N | FLO |
| 0.886000 | 33.60 | 10.4 | 56 | 22.4 | QP | N | FLO |
| 2.818000 | 33.80 | 10.4 | 56 | 22.2 | QP | N | FLO |
| 3.782000 | 34.60 | 10.4 | 56 | 21.4 | QP | N | FLO |
| 4.950000 | 35.50 | 10.4 | 56 | 20.5 | QP | N | FLO |
| 17.554000 | 40.80 | 11.0 | 60 | 19.2 | QP | N | FLO |

MEASUREMENT RESULT: "TEST_fin2"

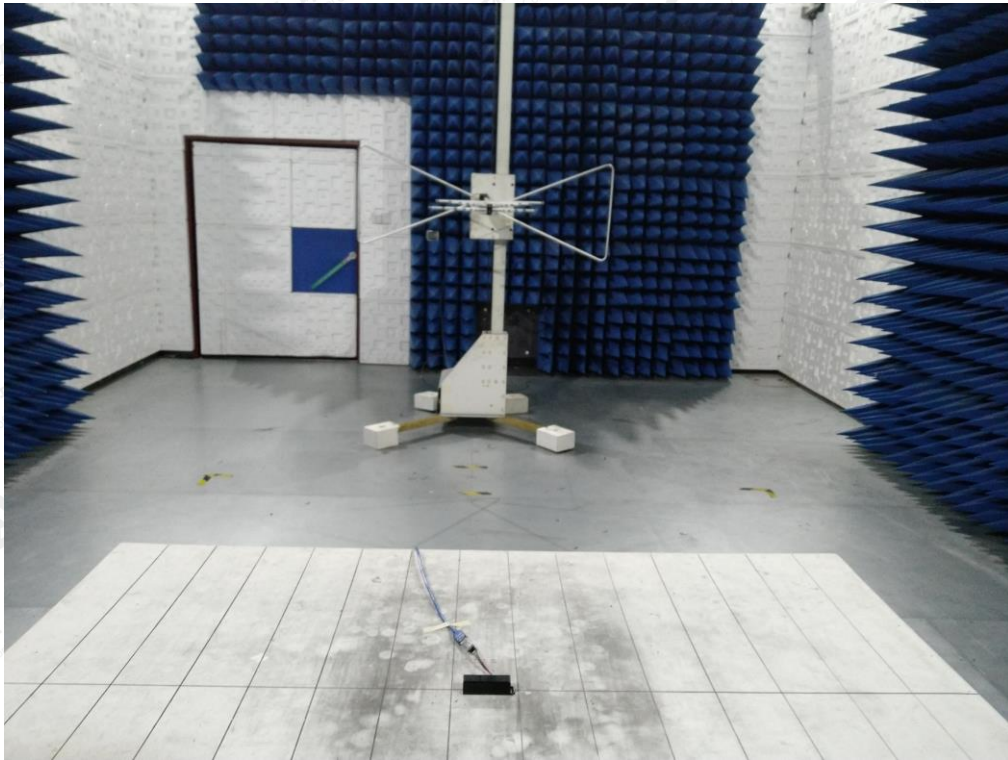
| Frequency MHz | Level dBuV | Transd dB | Limit dBuV | Margin dB | Detector | Line | PE |
|---------------|------------|-----------|------------|-----------|----------|------|-----|
| 0.490000 | 27.30 | 10.3 | 46 | 18.9 | AV | N | FLO |
| 0.886000 | 24.40 | 10.4 | 46 | 21.6 | AV | N | FLO |
| 2.818000 | 23.10 | 10.4 | 46 | 22.9 | AV | N | FLO |
| 3.658000 | 24.30 | 10.4 | 46 | 21.7 | AV | N | FLO |
| 4.934000 | 24.80 | 10.4 | 46 | 21.2 | AV | N | FLO |
| 17.554000 | 28.50 | 11.0 | 50 | 21.5 | AV | N | FLO |

RESULT: PASS

Note: All the test modes had been tested, the mode 1 was the worst case. Only the data of the worst case would be record in this test report.

The results shown in this test report refer only to the sample(s) tested unless otherwise stated and the sample(s) are retained for 30 days only. The document is issued by AGC, this document cannot be reproduced except in full with our prior written permission. The more details and the authenticity of the report will be confirmed at <http://www.agc-cert.com>.

APPENDIX A: PHOTOGRAPHS OF TEST SETUP
RADIATED EMISSION TEST SETUP BELOW 1GHZ



RADIATED EMISSION TEST SETUP ABOVE 1GHZ



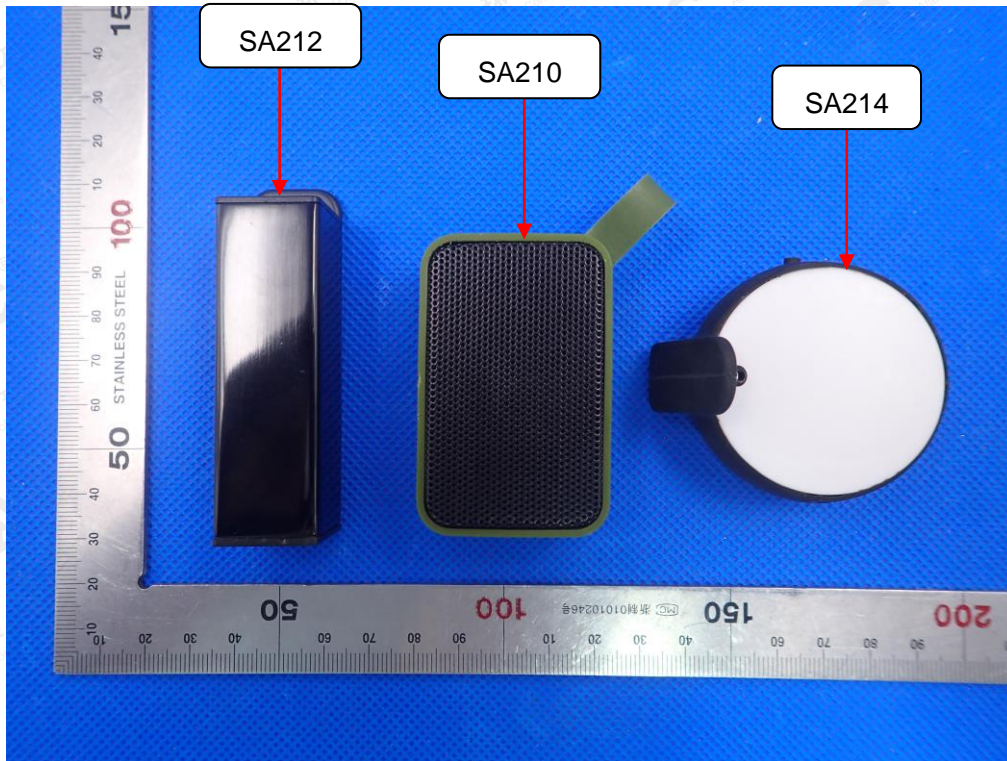
The results shown in this test report refer only to the sample(s) tested unless otherwise stated and the sample(s) are retained for 30 days only. The document is issued by AGC, this document cannot be reproduced except in full with our prior written permission. The more details and the authenticity of the report will be confirmed at <http://www.agc-cert.com>.

CONDUCTED EMISSION TEST SETUP

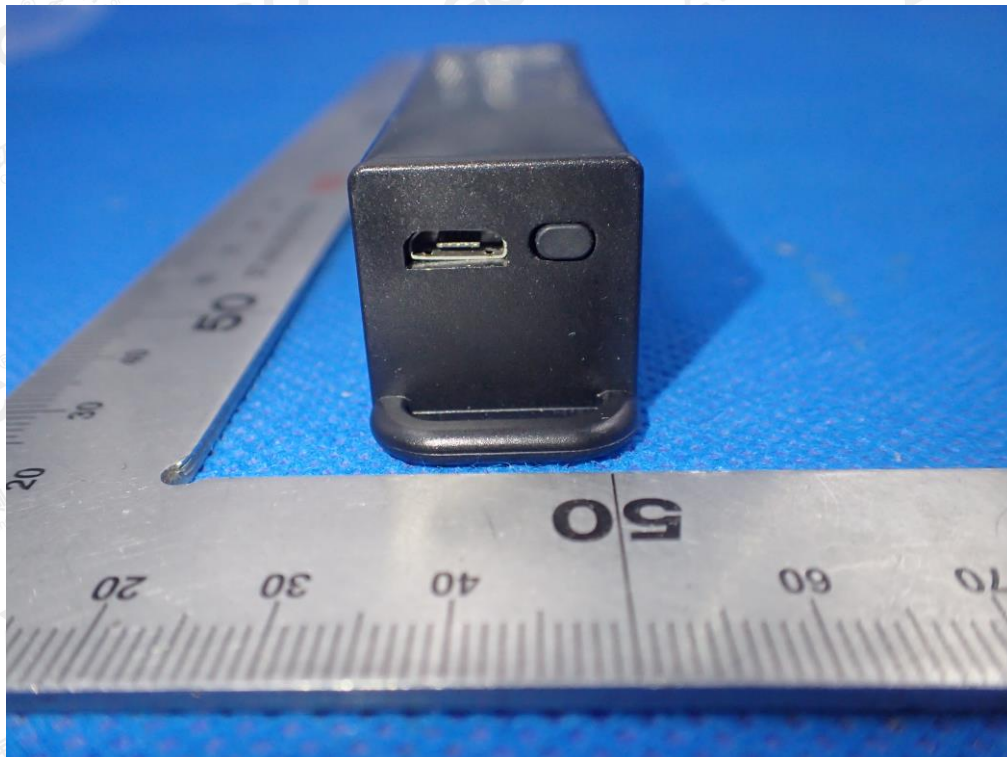


The results shown in this test report refer only to the sample(s) tested unless otherwise stated and the sample(s) are retained for 30 days only. The document is issued by AGC, this document cannot be reproduced except in full with our prior written permission. The more details and the authenticity of the report will be confirmed at <http://www.agc-cert.com>.

APPENDIX B: PHOTOGRAPHS OF EUT
ALL VIEW OF EUT

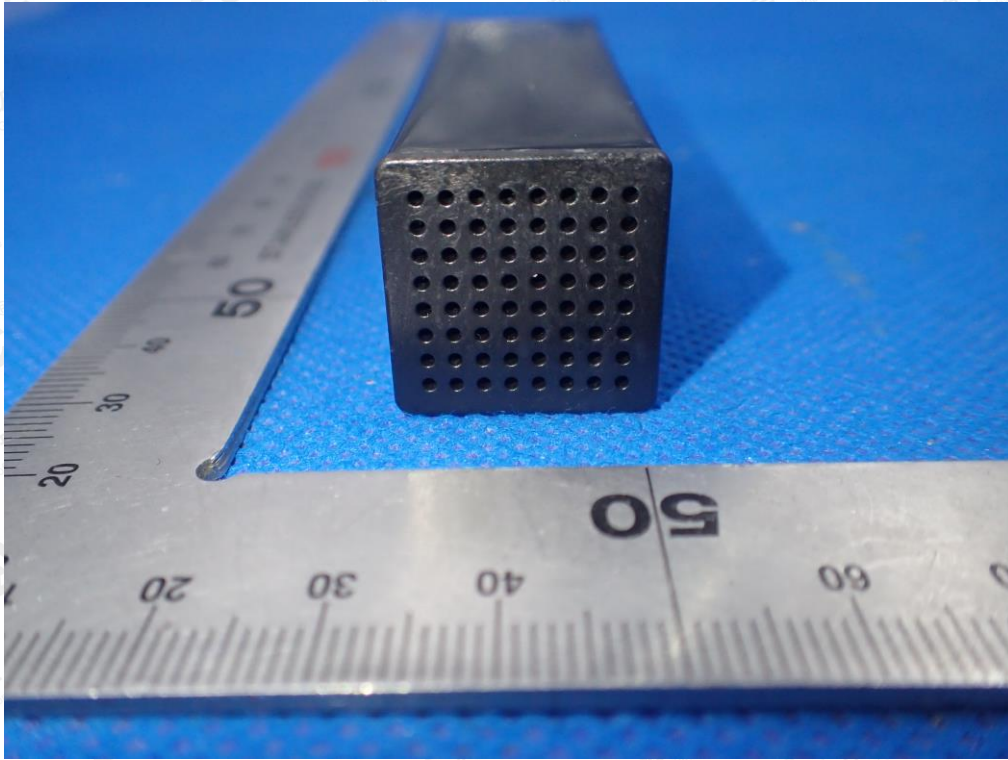


TOP VIEW OF EUT

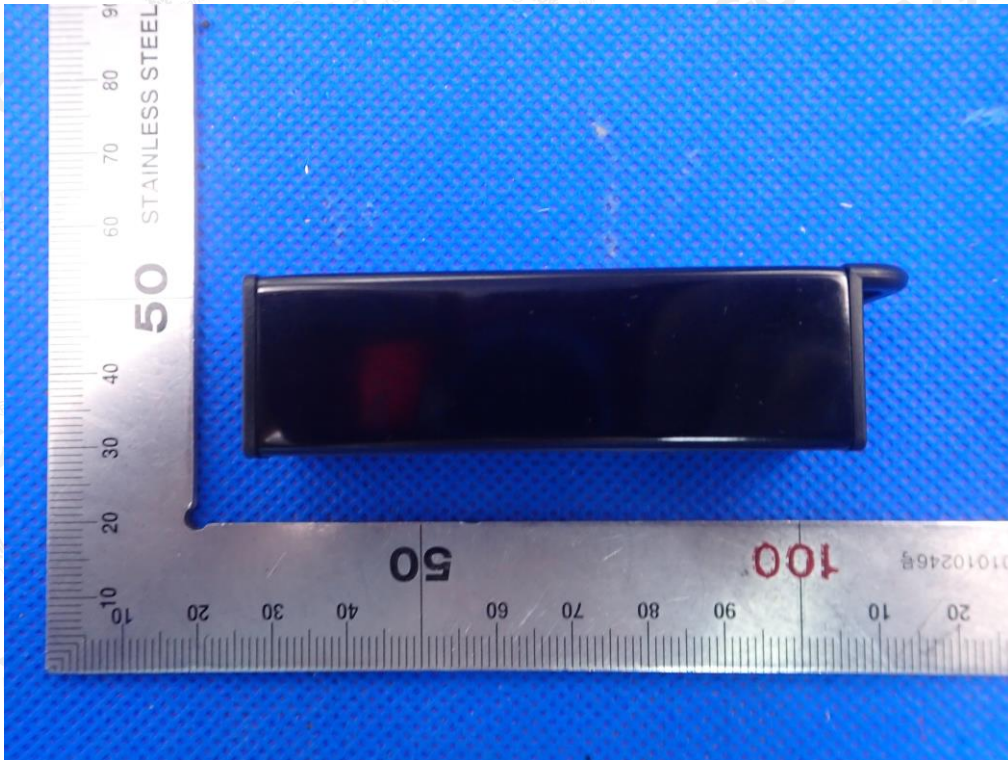


The results shown in this test report refer only to the sample(s) tested unless otherwise stated and the sample(s) are retained for 30 days only. The document is issued by AGC, this document cannot be reproduced except in full with our prior written permission. The more details and the authenticity of the report will be confirmed at <http://www.agc-cert.com>.

BOTTOM VIEW OF EUT

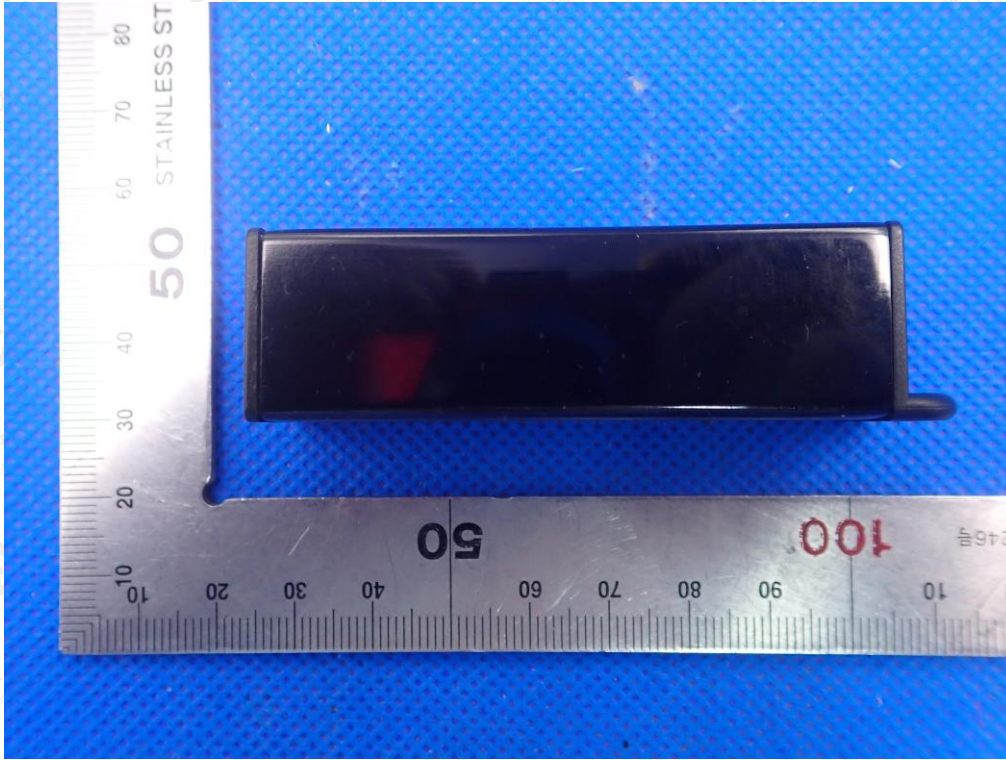


FRONT VIEW OF EUT

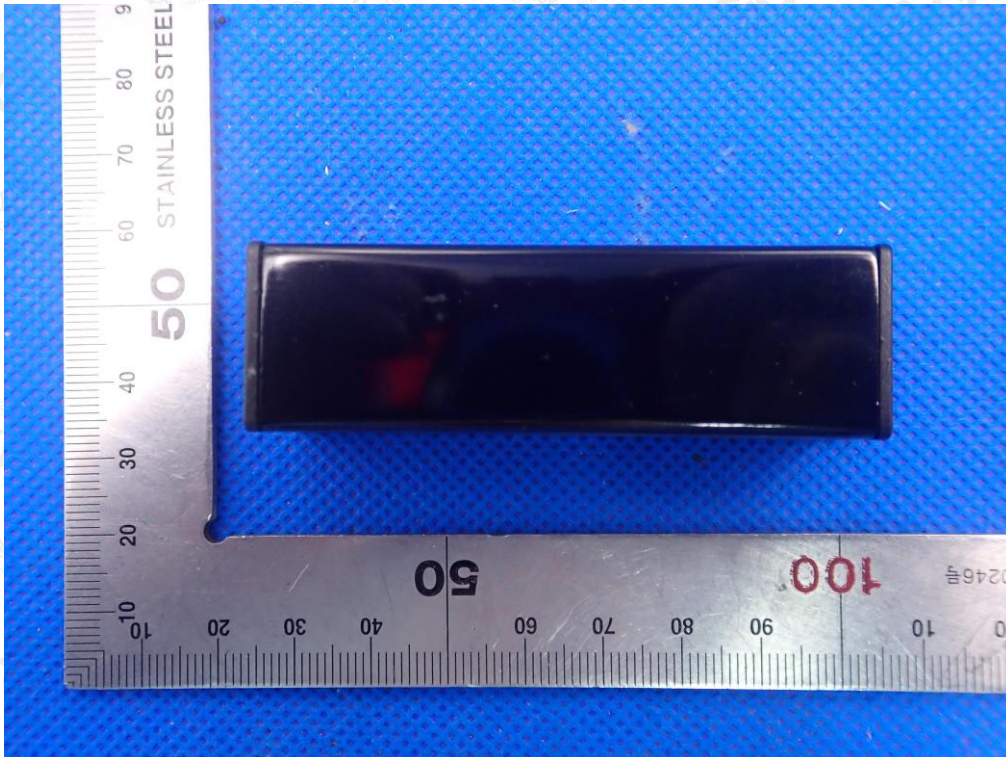


The results shown in this test report refer only to the sample(s) tested unless otherwise stated and the sample(s) are retained for 30 days only. The document is issued by AGC, this document cannot be reproduced except in full with our prior written permission. The more details and the authenticity of the report will be confirmed at <http://www.agc-cert.com>.

BACK VIEW OF EUT

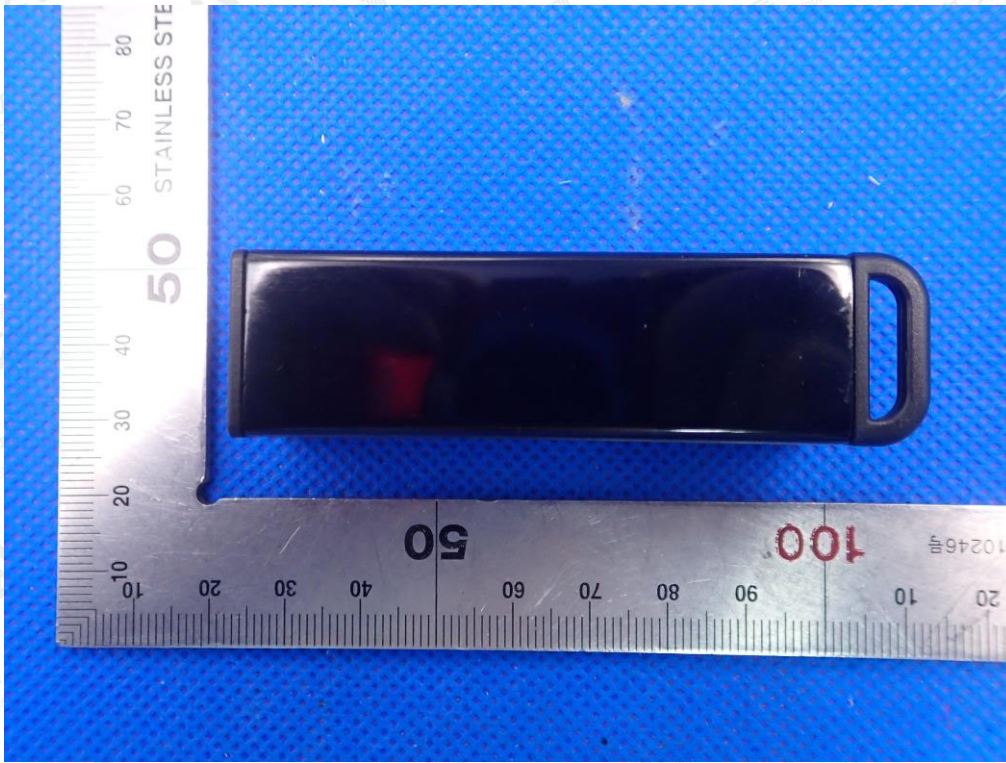


LEFT VIEW OF EUT

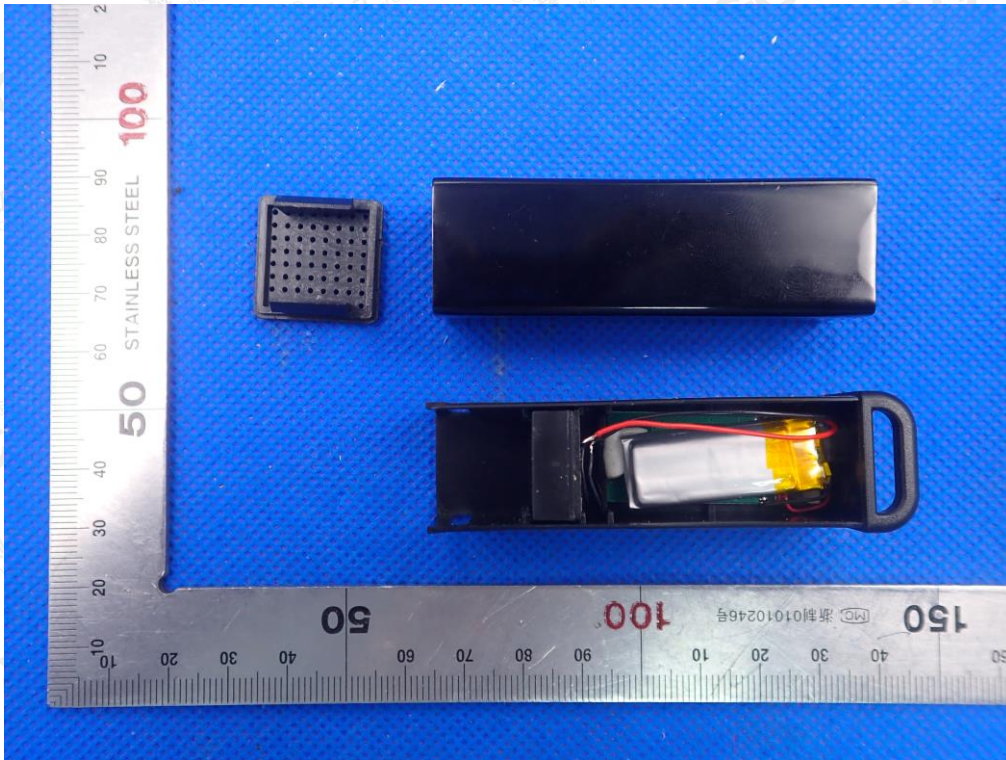


The results shown in this test report refer only to the sample(s) tested unless otherwise stated and the sample(s) are retained for 30 days only. The document is issued by AGC, this document cannot be reproduced except in full with our prior written permission. The more details and the authenticity of the report will be confirmed at <http://www.agc-cert.com>.

RIGHT VIEW OF EUT

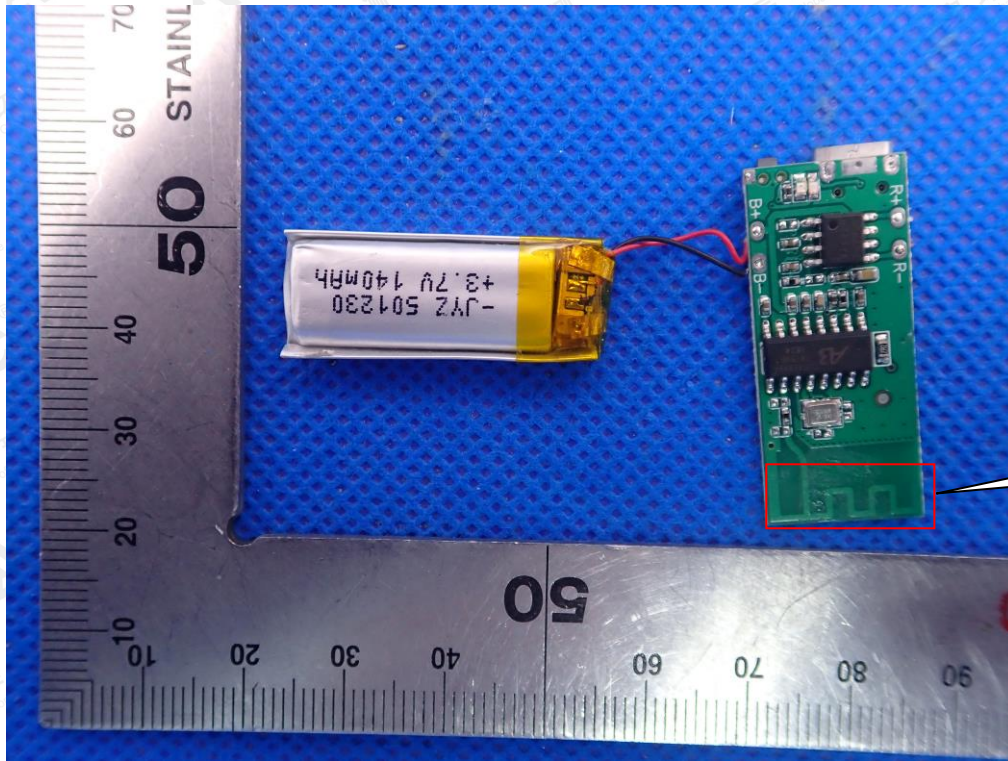


OPEN VIEW OF EUT-1

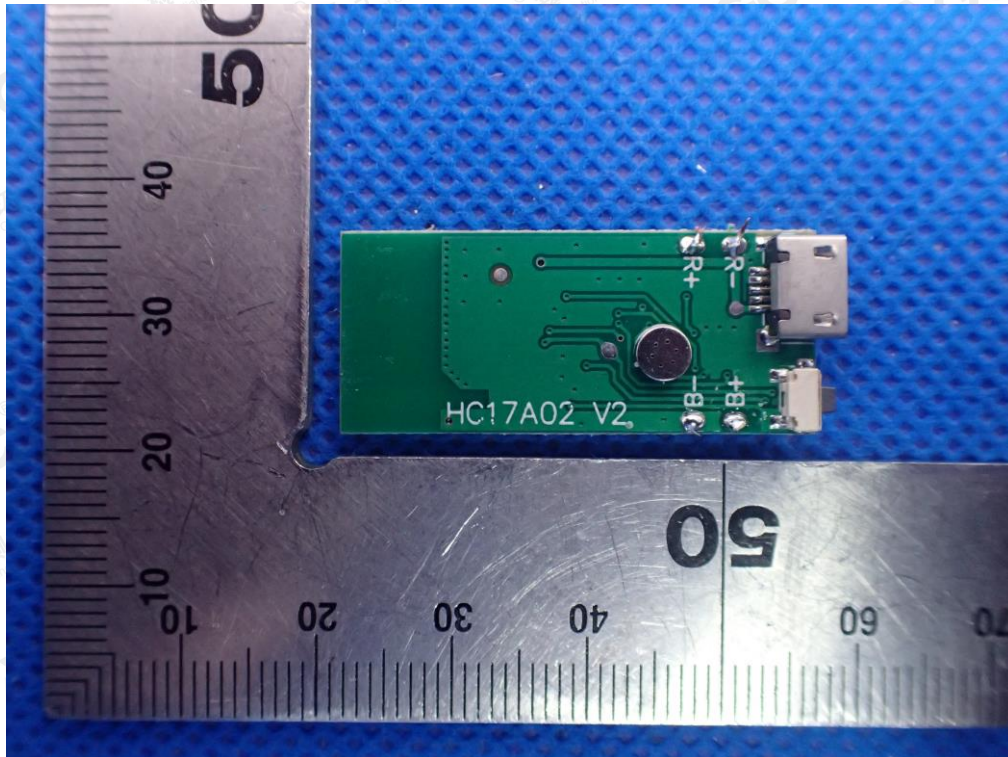


The results shown in this test report refer only to the sample(s) tested unless otherwise stated and the sample(s) are retained for 30 days only. The document is issued by AGC, this document cannot be reproduced except in full with our prior written permission. The more details and the authenticity of the report will be confirmed at <http://www.agc-cert.com>.

INTERNAL VIEW OF EUT-1

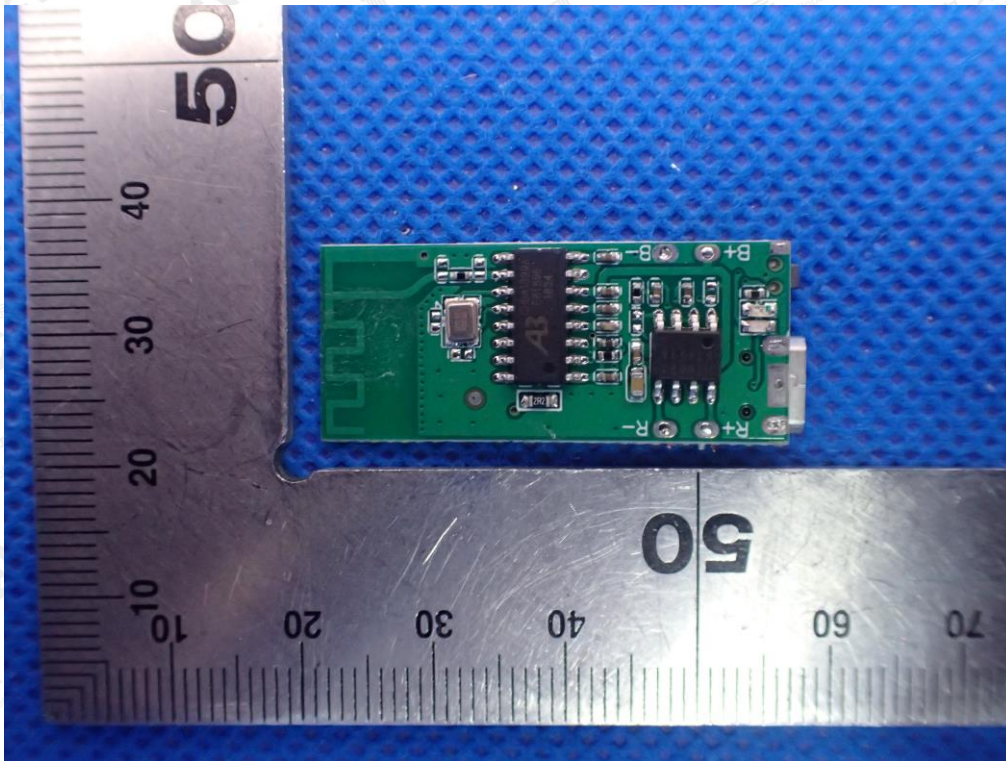


INTERNAL VIEW OF EUT-2

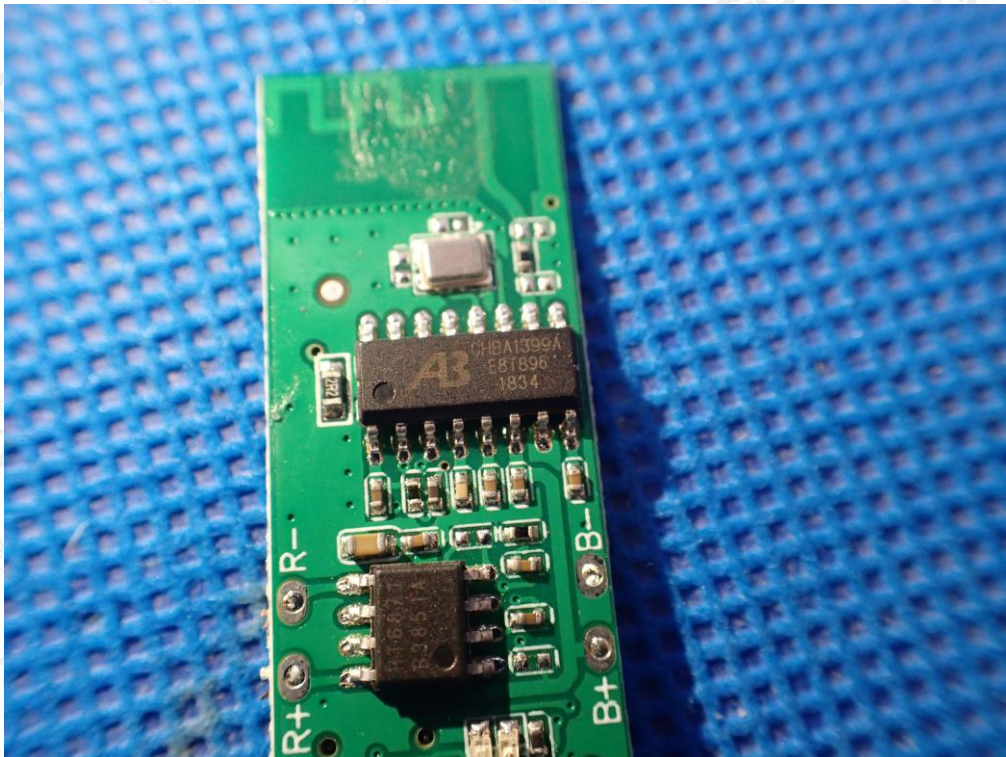


The results shown in this test report refer only to the sample(s) tested unless otherwise stated and the sample(s) are retained for 30 days only. The document is issued by AGC, this document cannot be reproduced except in full with our prior written permission. The more details and the authenticity of the report will be confirmed at <http://www.agc-cert.com>.

INTERNAL VIEW OF EUT-3

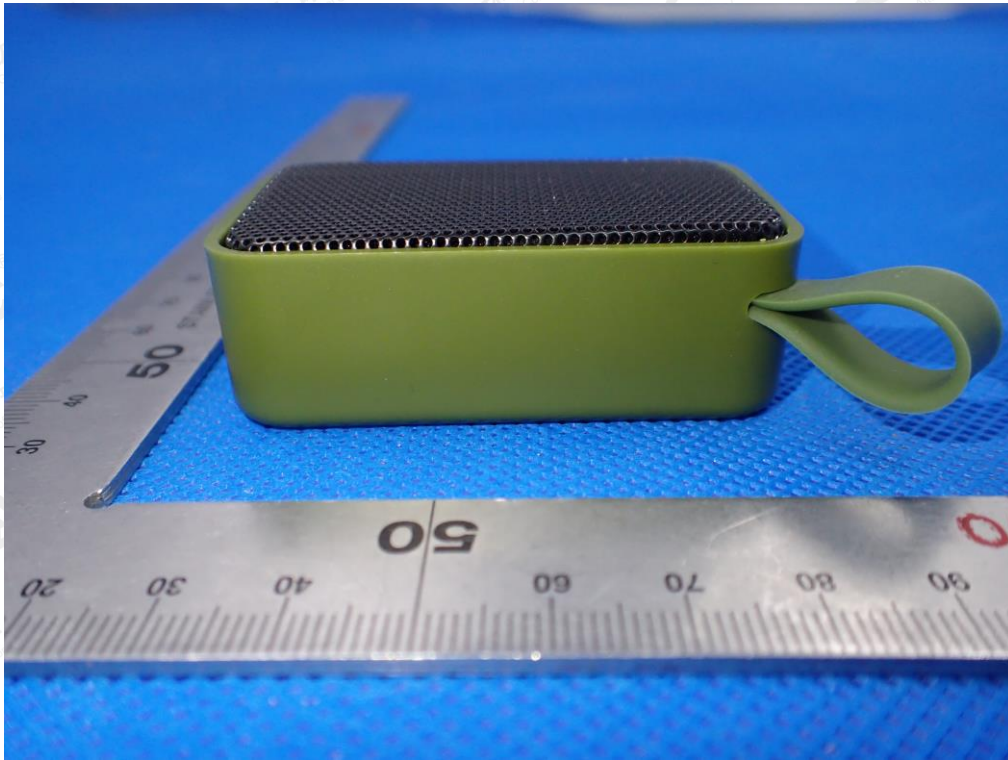


INTERNAL VIEW OF EUT-4

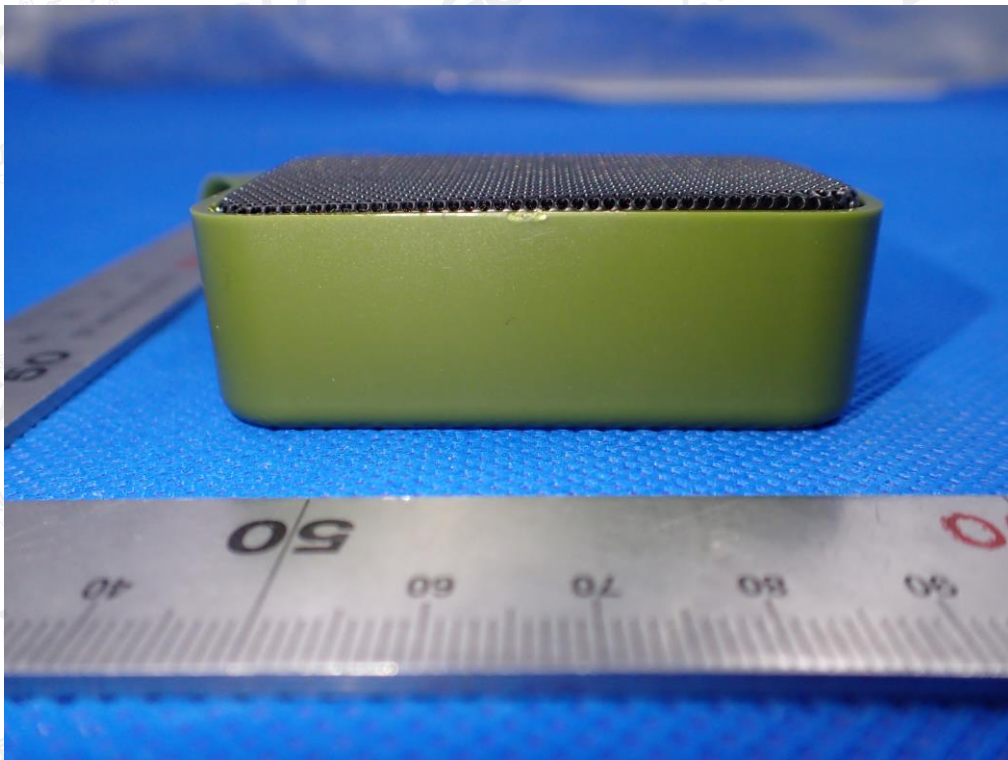


The results shown in this test report refer only to the sample(s) tested unless otherwise stated and the sample(s) are retained for 30 days only. The document is issued by AGC, this document cannot be reproduced except in full with our prior written permission. The more details and the authenticity of the report will be confirmed at <http://www.agc-cert.com>.

THE MODE NAME OF SA210
TOP VIEW OF EUT



BOTTOM VIEW OF EUT

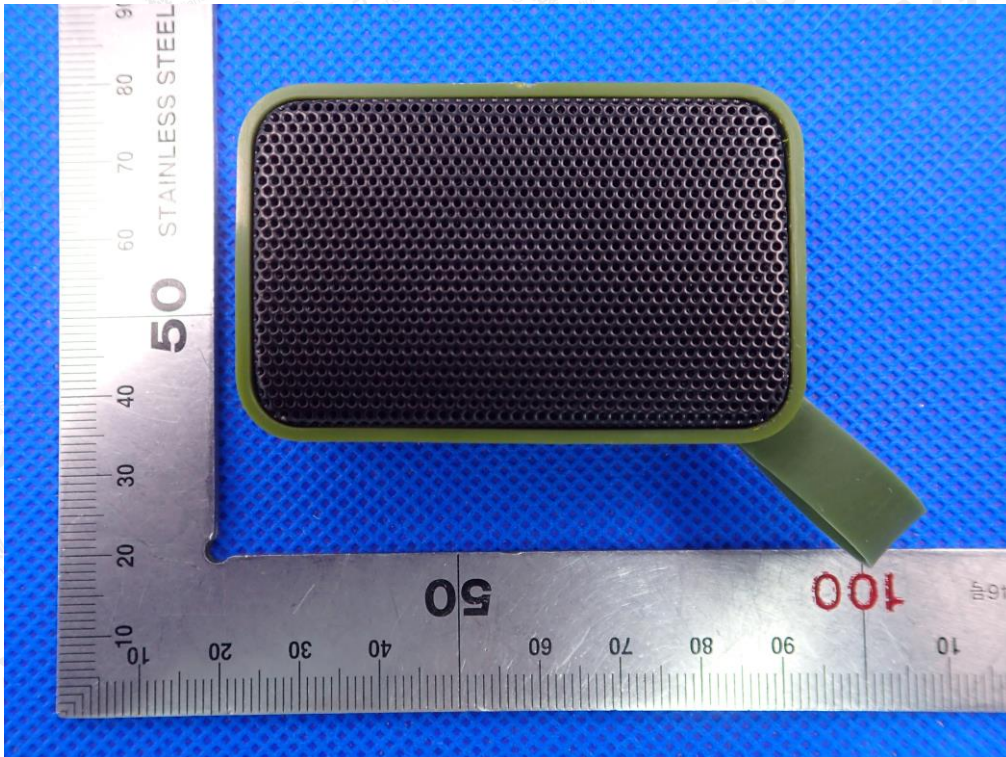


The results shown in this test report refer only to the sample(s) tested unless otherwise stated and the sample(s) are retained for 30 days only. The document is issued by AGC, this document cannot be reproduced except in full with our prior written permission. The more details and the authenticity of the report will be confirmed at <http://www.agc-cert.com>.

FRONT VIEW OF EUT

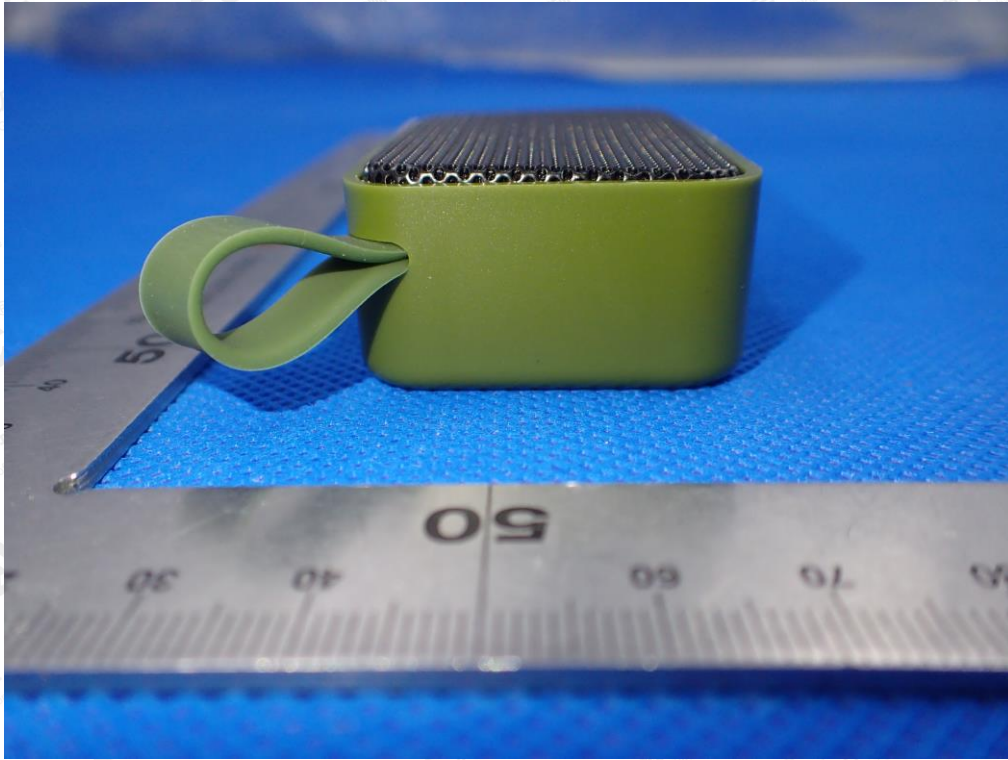


BACK VIEW OF EUT

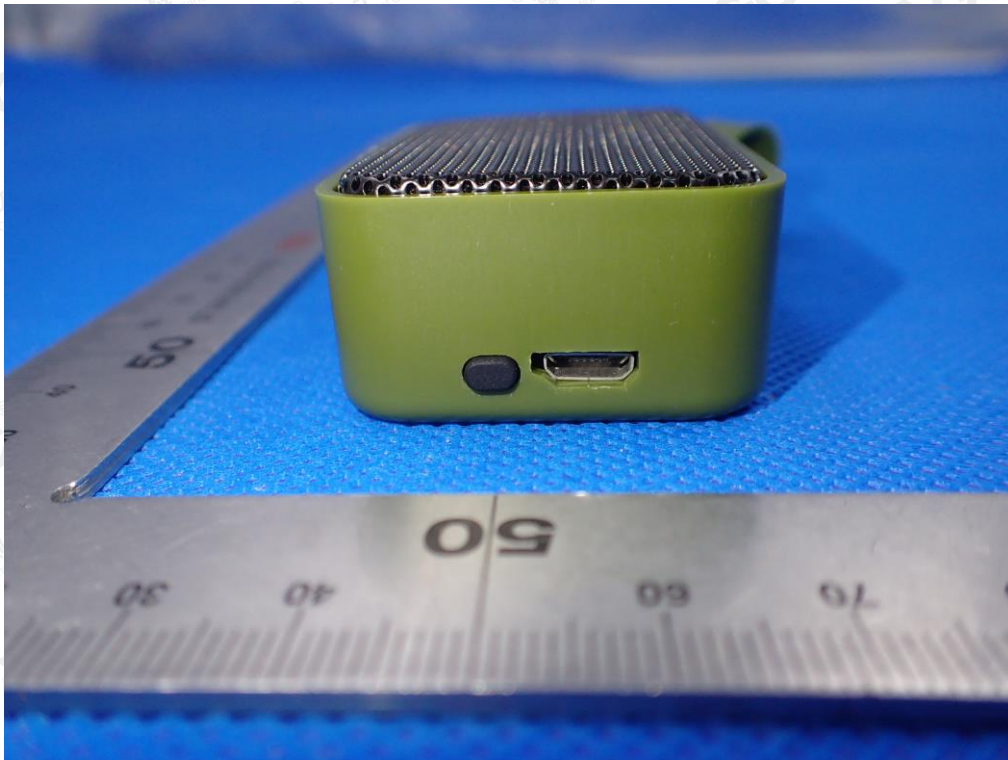


The results shown in this test report refer only to the sample(s) tested unless otherwise stated and the sample(s) are retained for 30 days only. The document is issued by AGC, this document cannot be reproduced except in full with our prior written permission. The more details and the authenticity of the report will be confirmed at <http://www.agc-cert.com>.

LEFT VIEW OF EUT

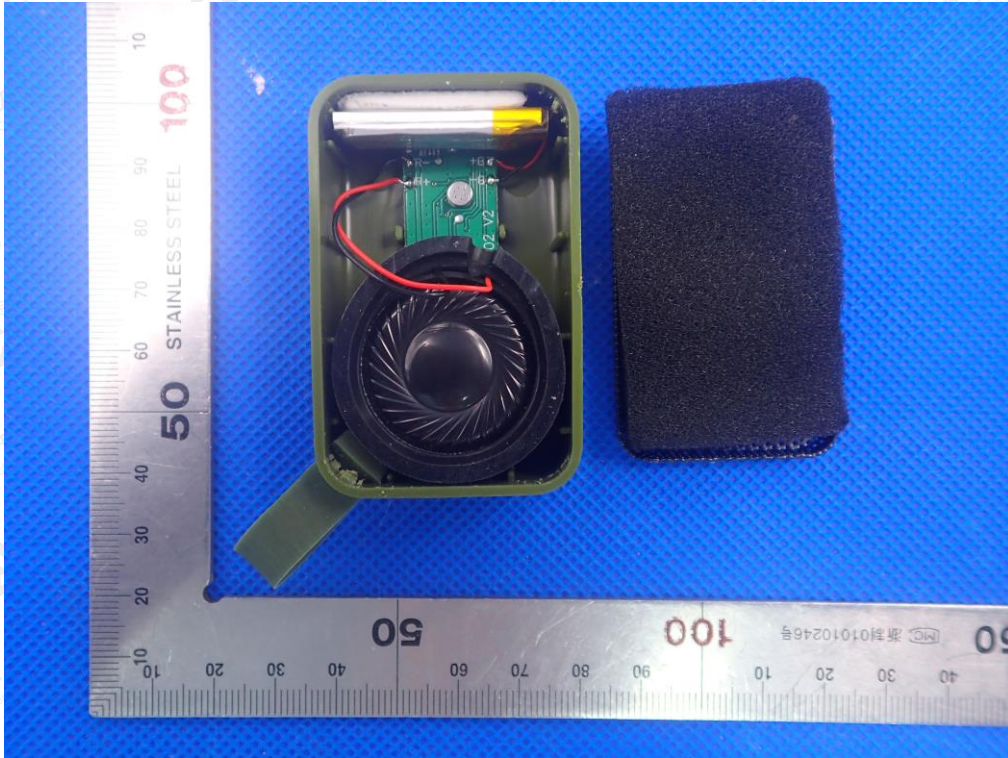


RIGHT VIEW OF EUT

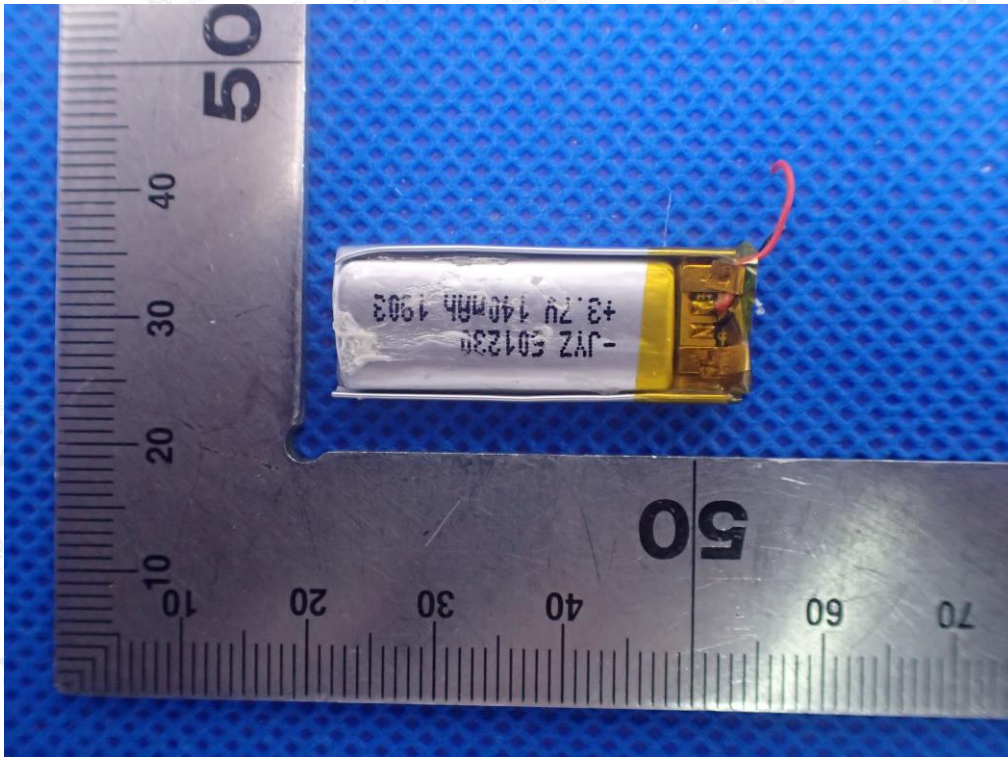


The results shown in this test report refer only to the sample(s) tested unless otherwise stated and the sample(s) are retained for 30 days only. The document is issued by AGC, this document cannot be reproduced except in full with our prior written permission. The more details and the authenticity of the report will be confirmed at <http://www.agc-cert.com>.

OPEN VIEW OF EUT-1

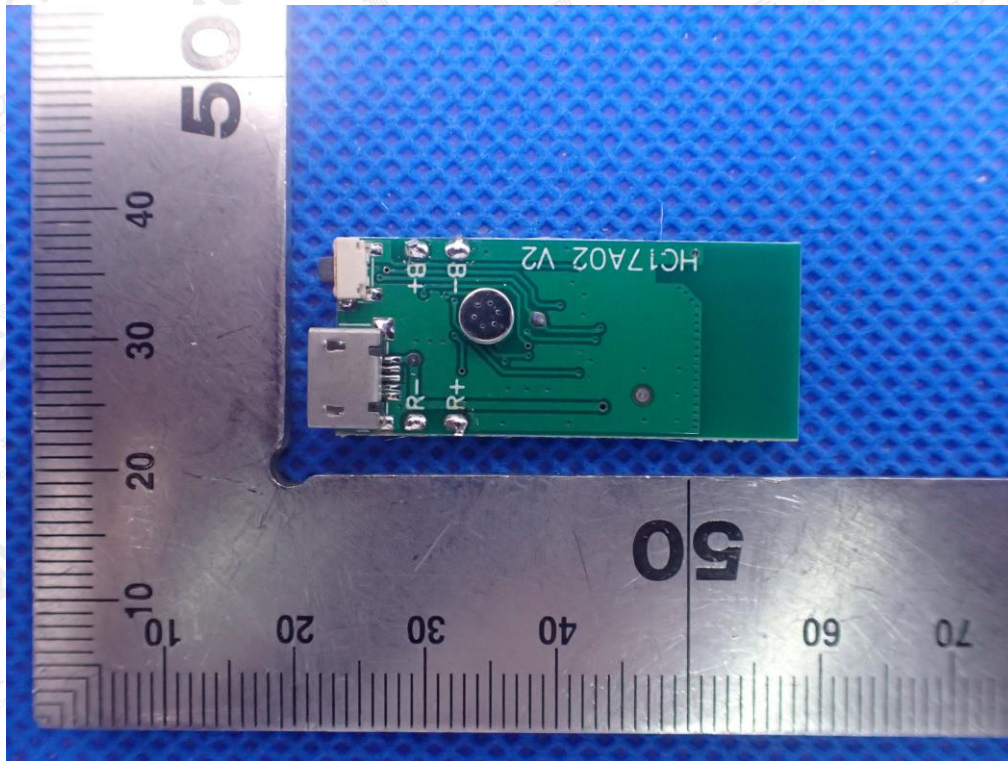


BATTERY OF EUT

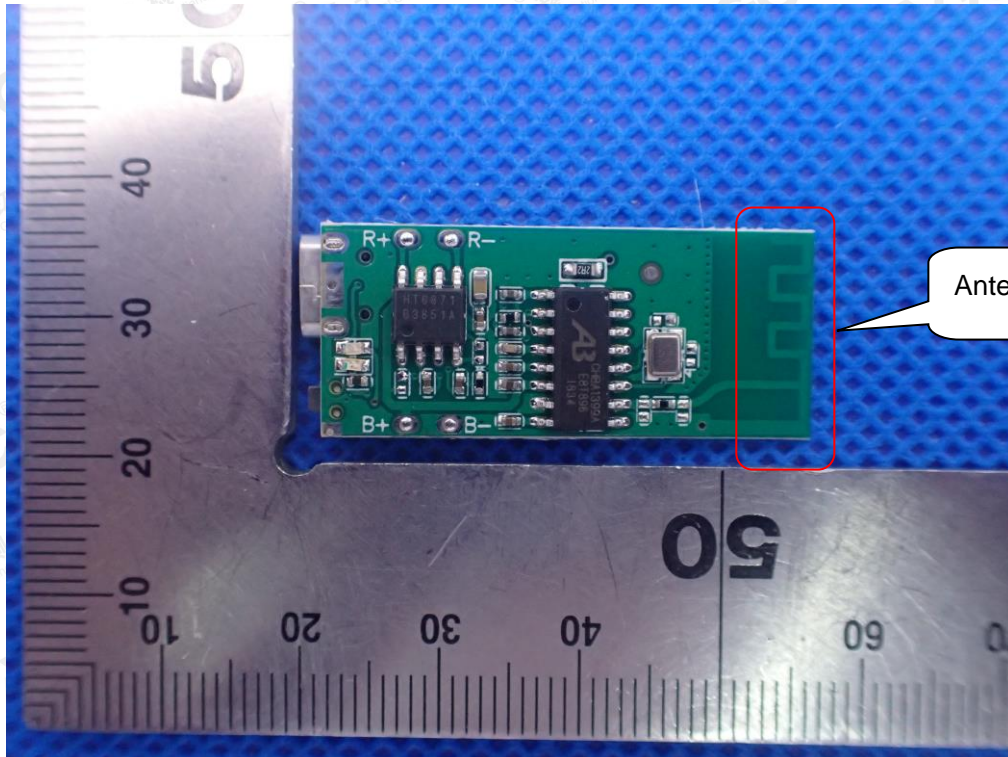


The results shown in this test report refer only to the sample(s) tested unless otherwise stated and the sample(s) are retained for 30 days only. The document is issued by AGC, this document cannot be reproduced except in full with our prior written permission. The more details and the authenticity of the report will be confirmed at <http://www.agc-cert.com>.

INTERNAL VIEW OF EUT-1

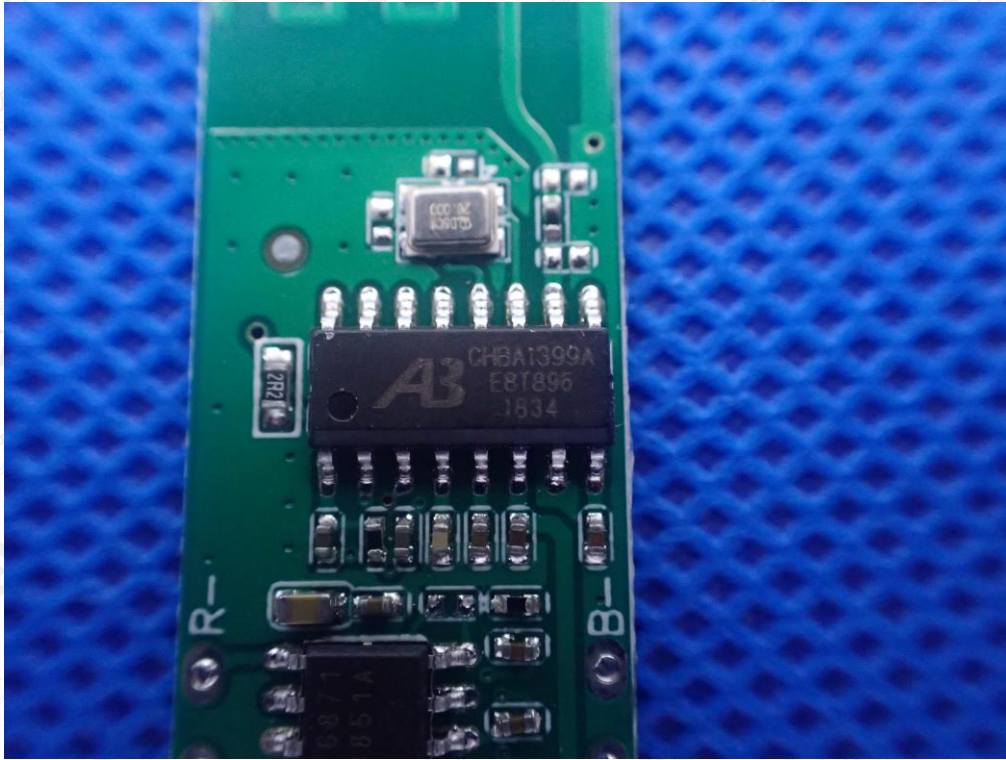


INTERNAL VIEW OF EUT-2



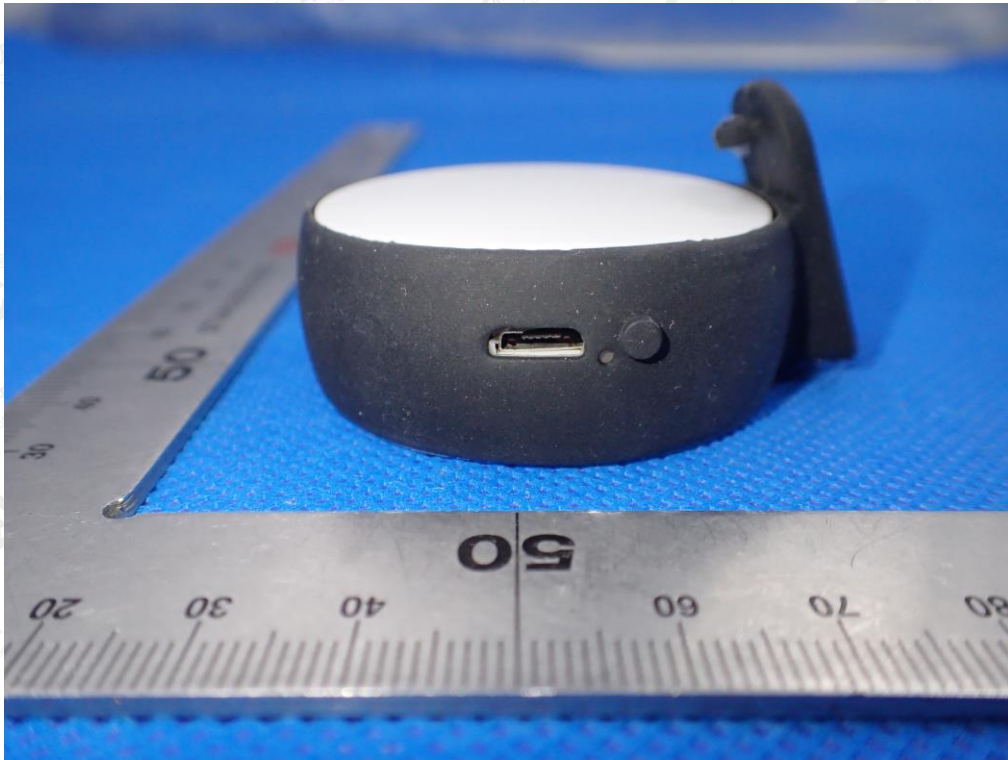
The results shown in this test report refer only to the sample(s) tested unless otherwise stated and the sample(s) are retained for 30 days only. The document is issued by AGC, this document cannot be reproduced except in full with our prior written permission. The more details and the authenticity of the report will be confirmed at <http://www.agc-cert.com>.

INTERNAL VIEW OF EUT-3

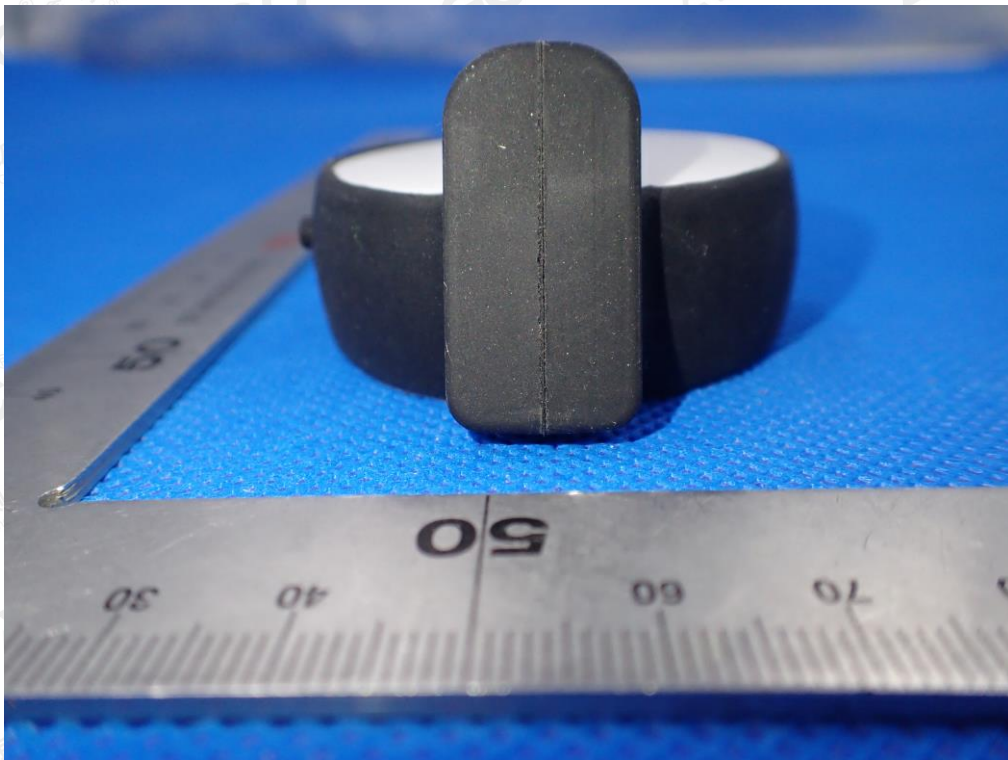


The results shown in this test report refer only to the sample(s) tested unless otherwise stated and the sample(s) are retained for 30 days only. The document is issued by AGC, this document cannot be reproduced except in full with our prior written permission. The more details and the authenticity of the report will be confirmed at <http://www.agc-cert.com>.

THE MODE NAME OF SA214
TOP VIEW OF EUT

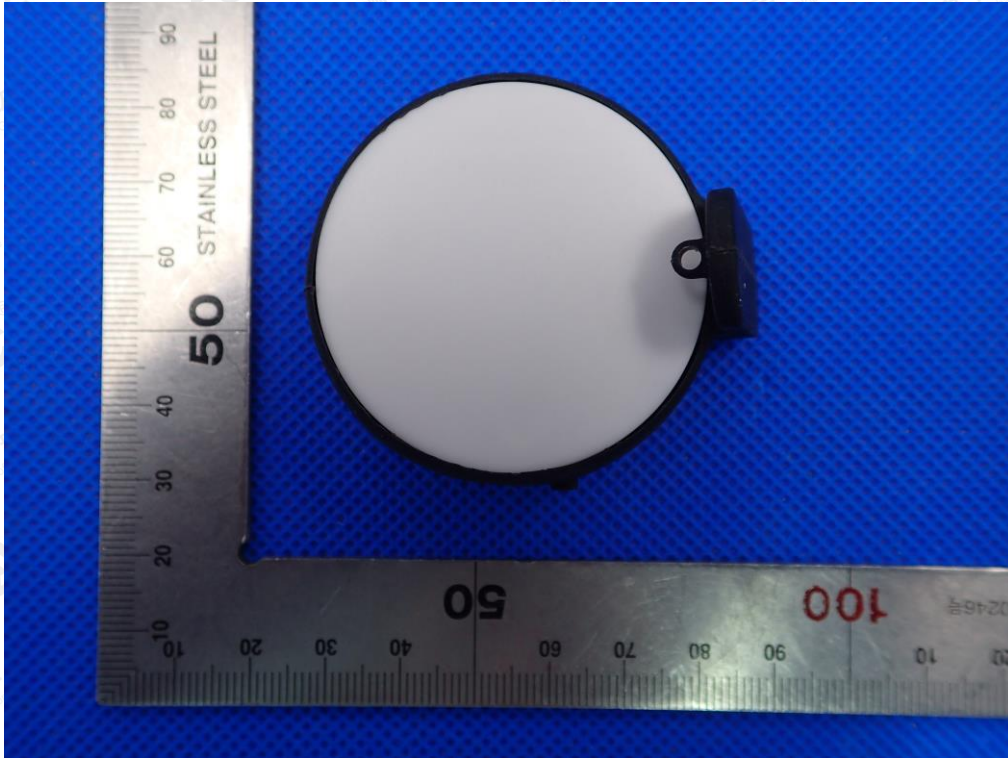


BOTTOM VIEW OF EUT

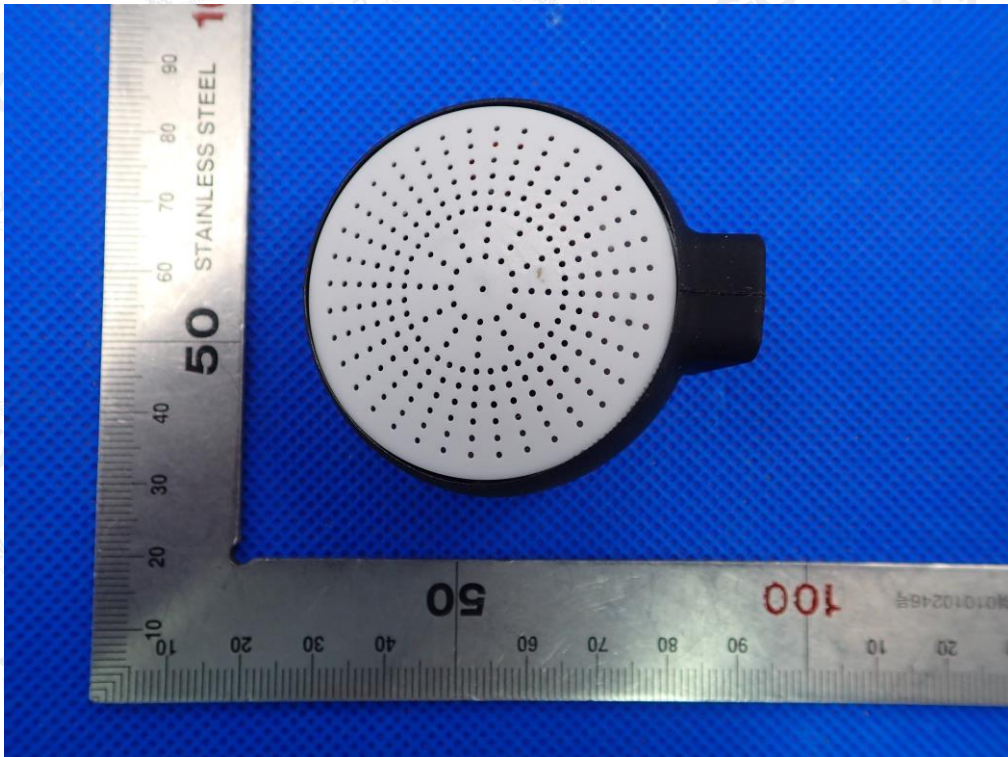


The results shown in this test report refer only to the sample(s) tested unless otherwise stated and the sample(s) are retained for 30 days only. The document is issued by AGC, this document cannot be reproduced except in full with our prior written permission. The more details and the authenticity of the report will be confirmed at <http://www.agc-cert.com>.

FRONT VIEW OF EUT

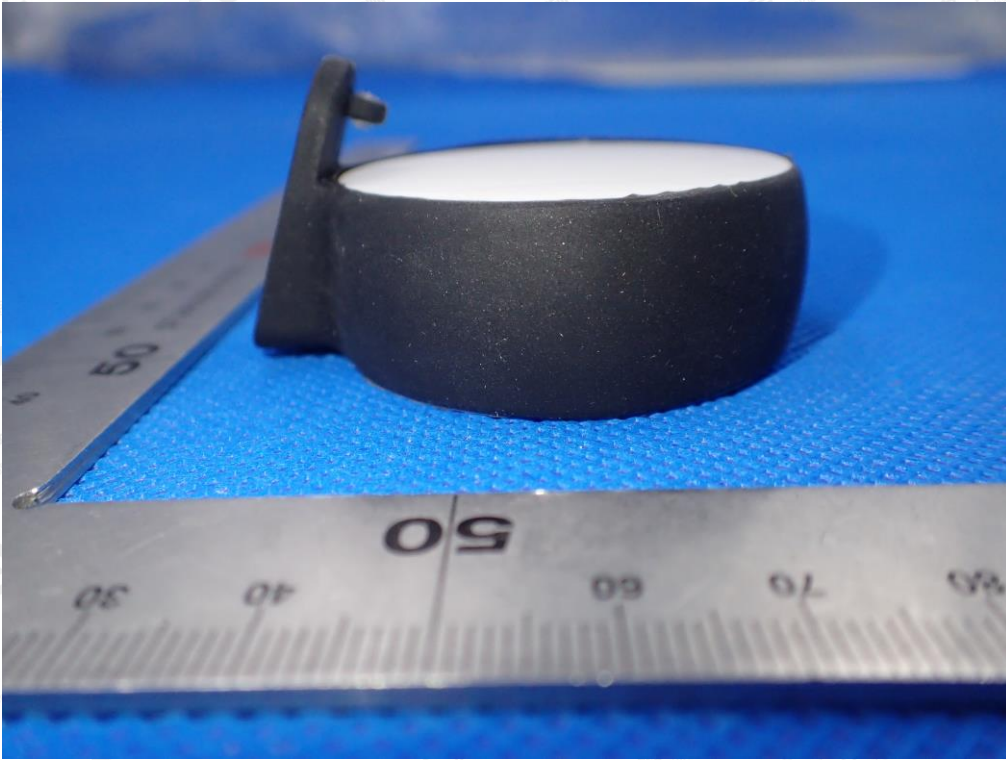


BACK VIEW OF EUT

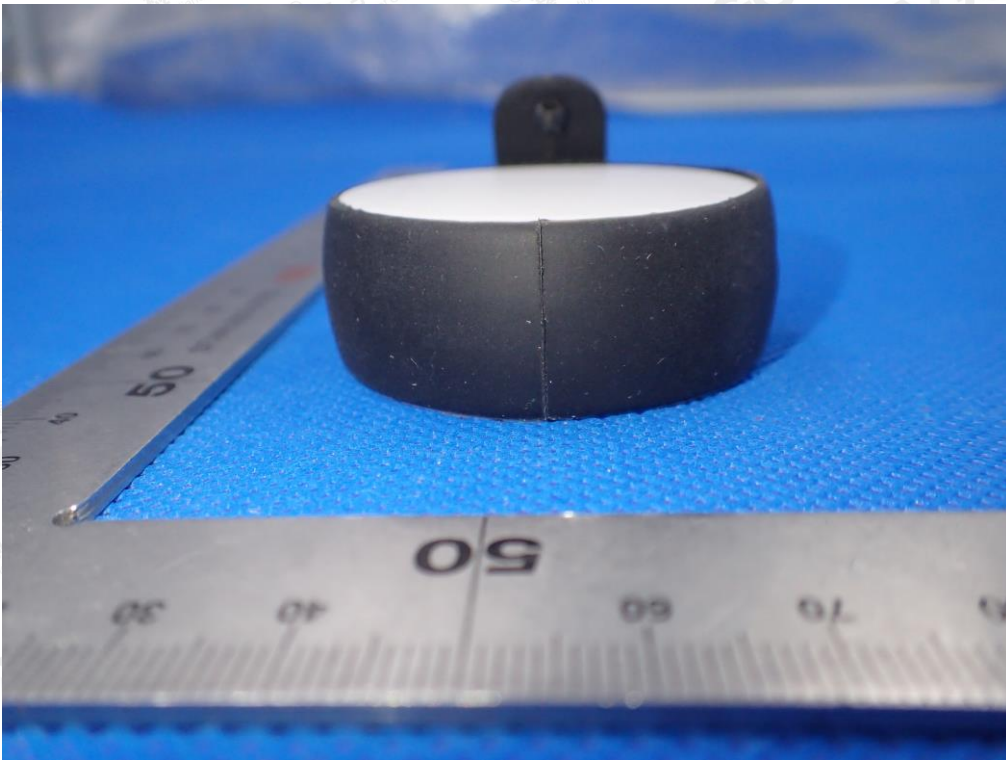


The results shown in this test report refer only to the sample(s) tested unless otherwise stated and the sample(s) are retained for 30 days only. The document is issued by AGC, this document cannot be reproduced except in full with our prior written permission. The more details and the authenticity of the report will be confirmed at <http://www.agc-cert.com>.

LEFT VIEW OF EUT

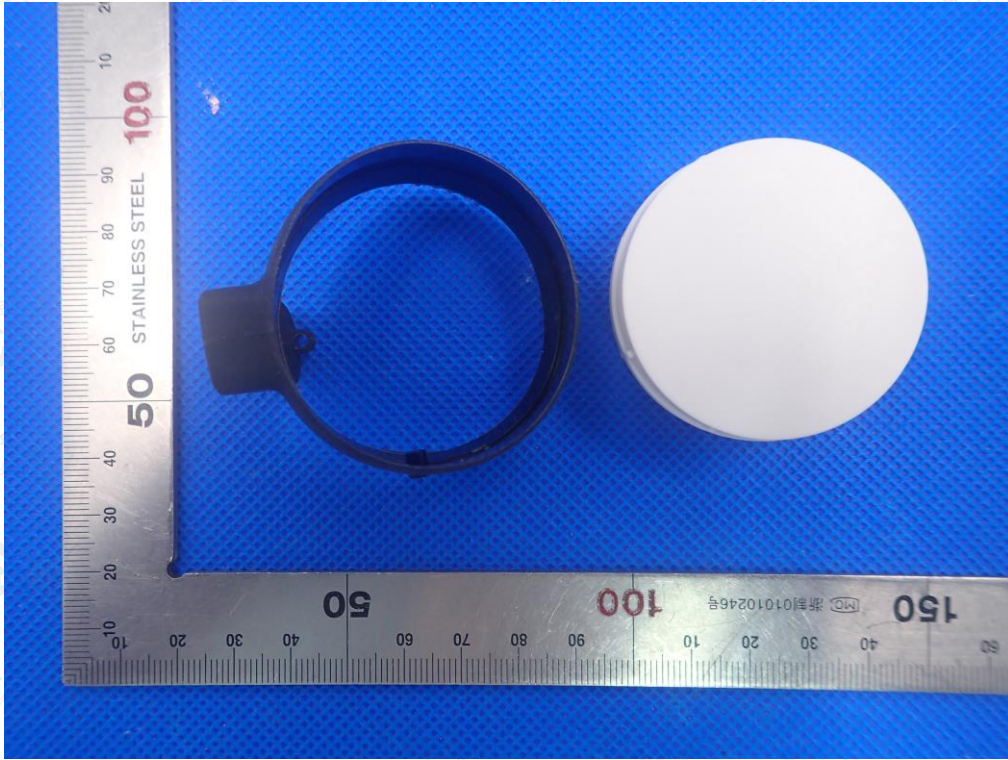


RIGHT VIEW OF EUT

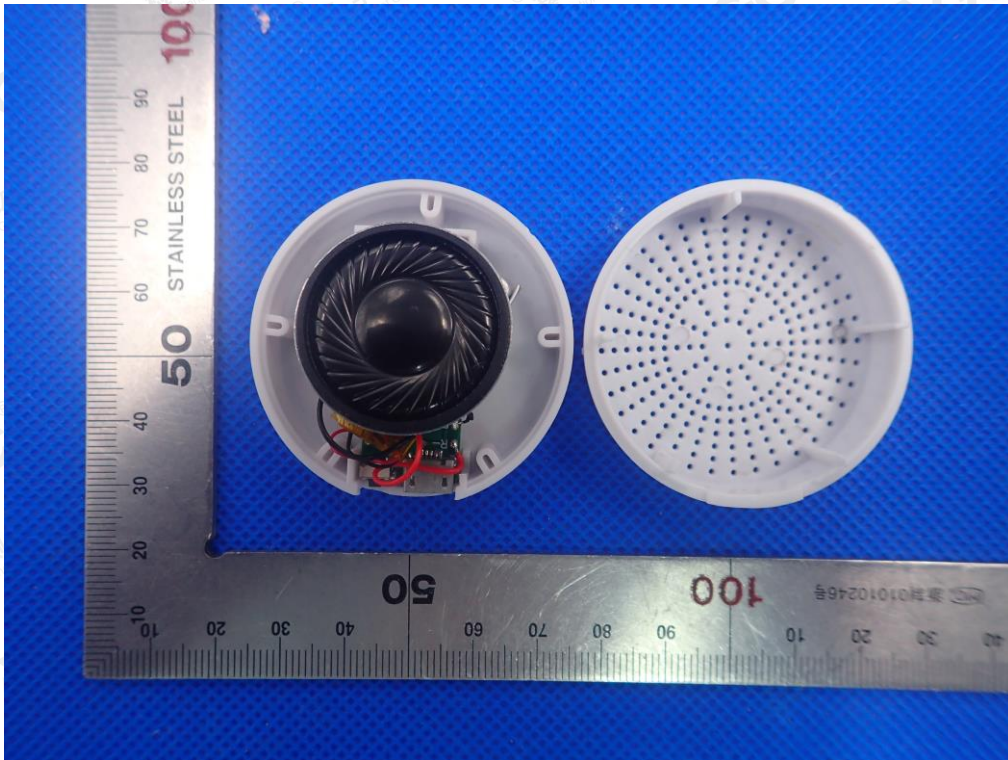


The results shown in this test report refer only to the sample(s) tested unless otherwise stated and the sample(s) are retained for 30 days only. The document is issued by AGC, this document cannot be reproduced except in full with our prior written permission. The more details and the authenticity of the report will be confirmed at <http://www.agc-cert.com>.

OPEN VIEW OF EUT-1

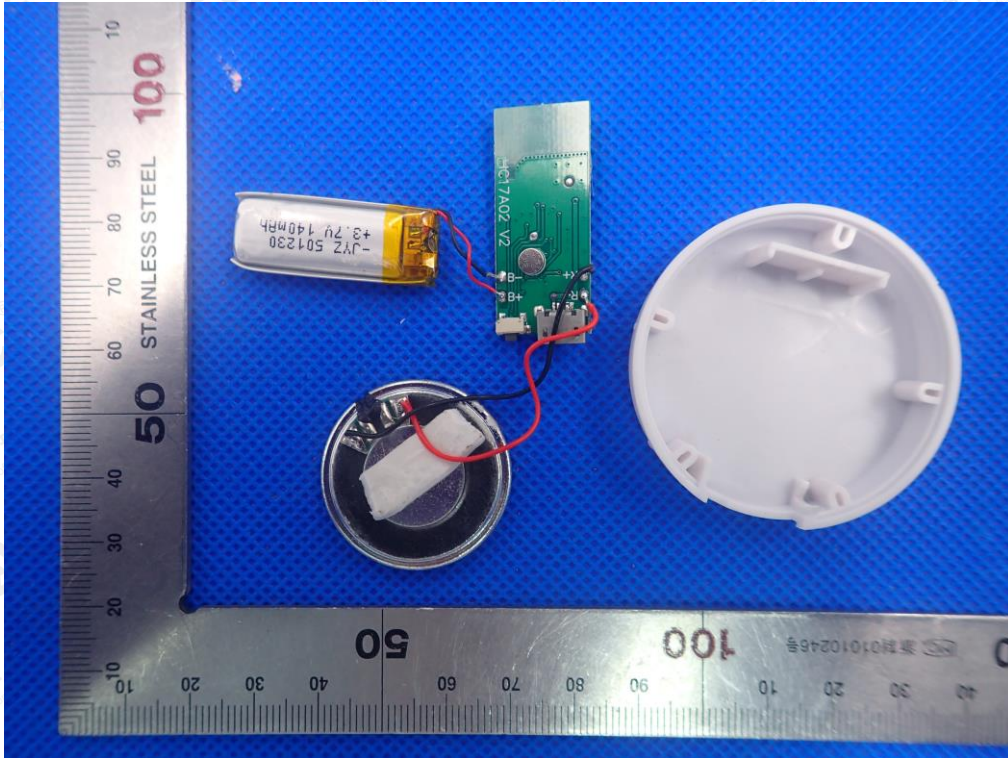


OPEN VIEW OF EUT-2

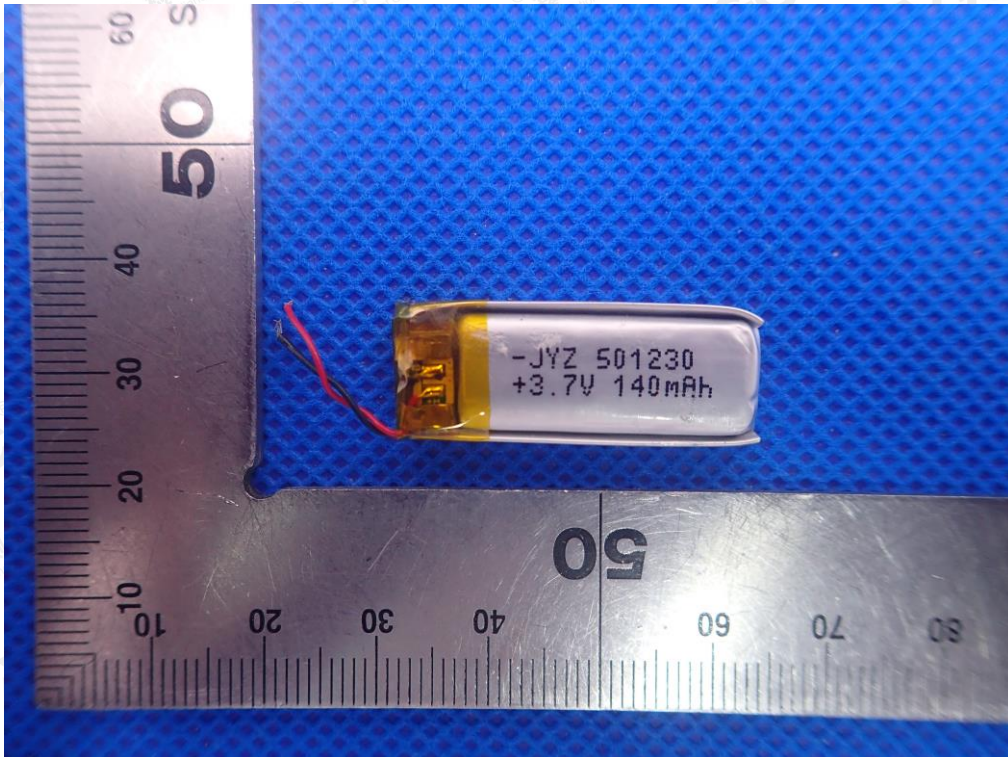


The results shown in this test report refer only to the sample(s) tested unless otherwise stated and the sample(s) are retained for 30 days only. The document is issued by AGC, this document cannot be reproduced except in full with our prior written permission. The more details and the authenticity of the report will be confirmed at <http://www.agc-cert.com>.

OPEN VIEW OF EUT-3

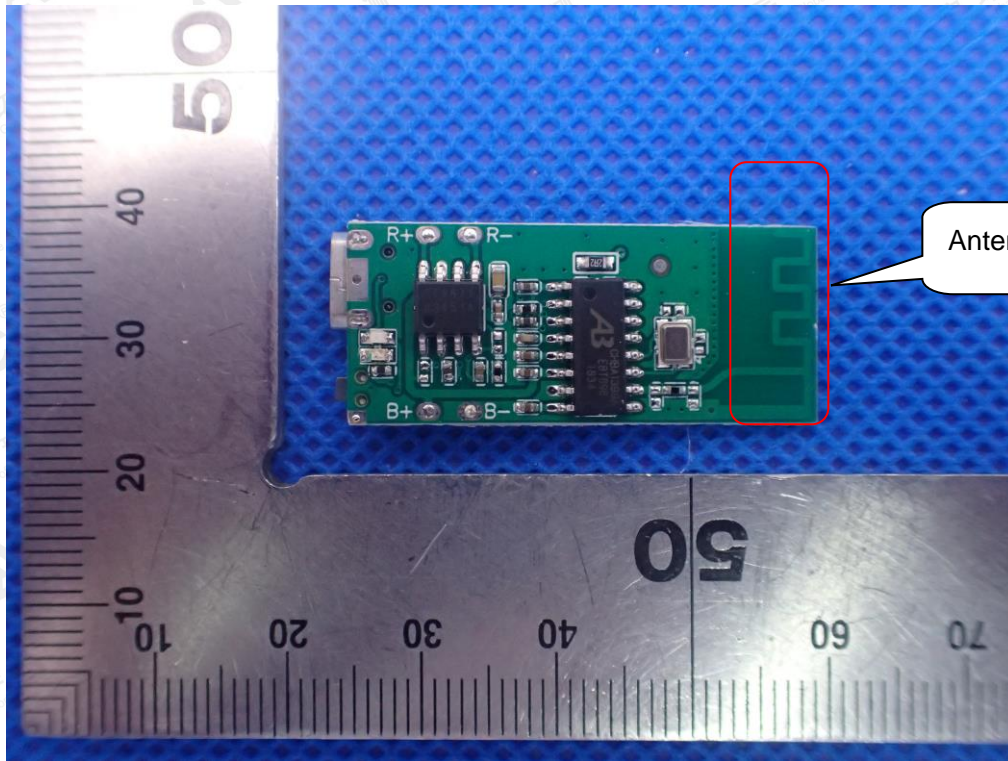


BATTERY OF EUT

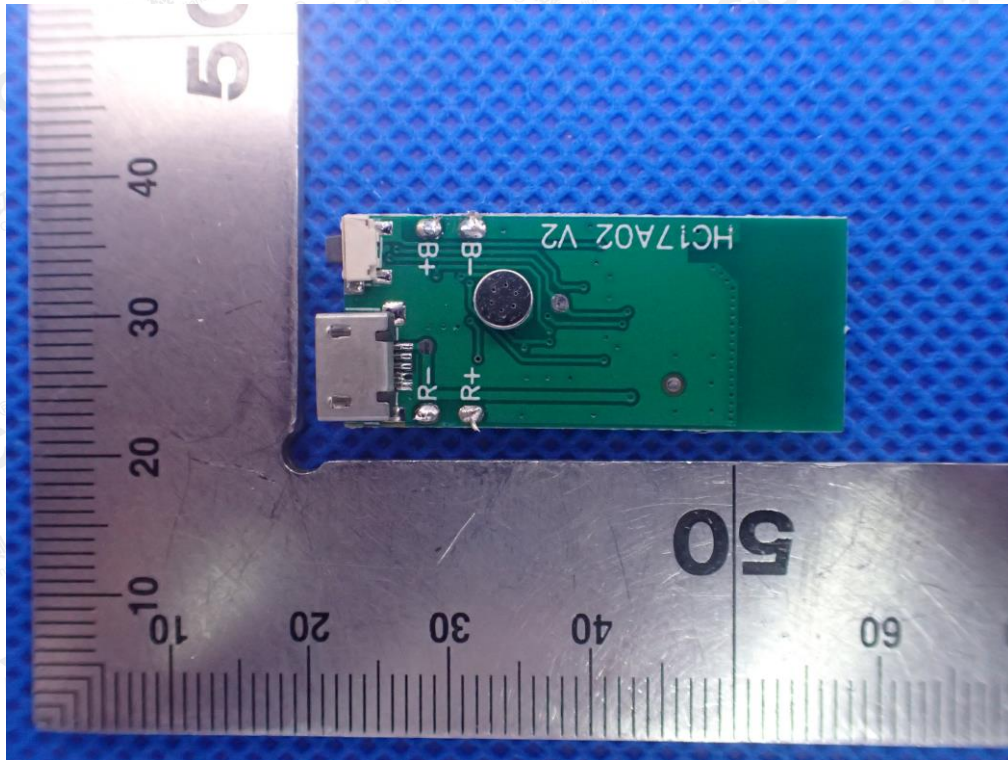


The results shown in this test report refer only to the sample(s) tested unless otherwise stated and the sample(s) are retained for 30 days only. The document is issued by AGC, this document cannot be reproduced except in full with our prior written permission. The more details and the authenticity of the report will be confirmed at <http://www.agc-cert.com>.

INTERNAL VIEW OF EUT-1

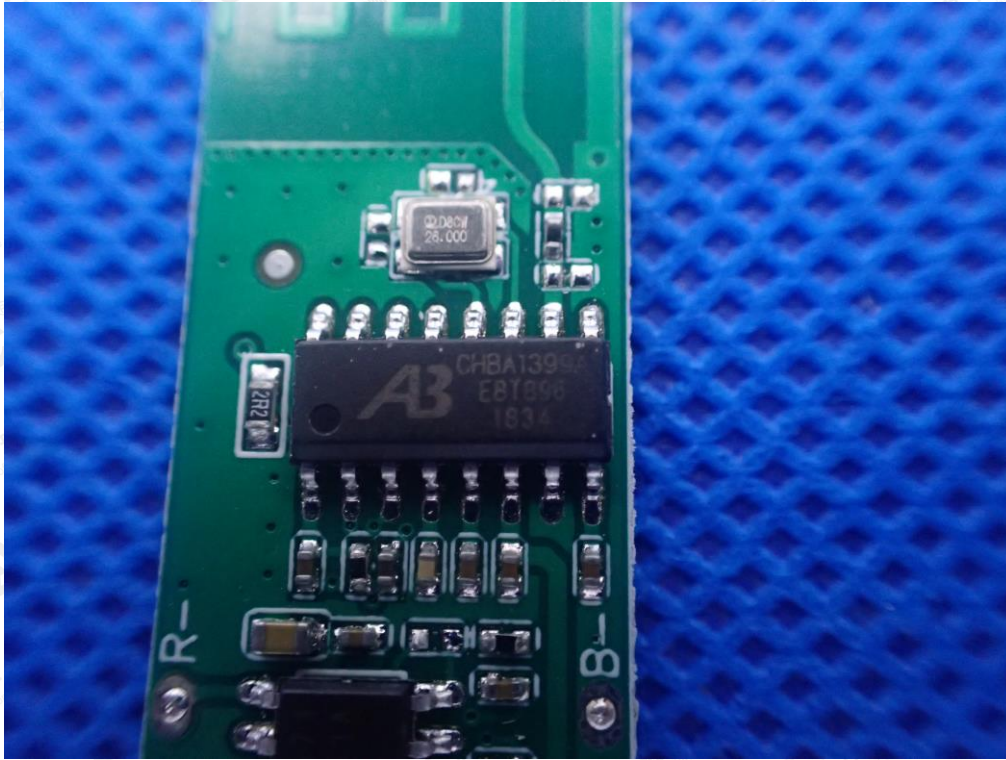


INTERNAL VIEW OF EUT-2



The results shown in this test report refer only to the sample(s) tested unless otherwise stated and the sample(s) are retained for 30 days only. The document is issued by AGC, this document cannot be reproduced except in full with our prior written permission. The more details and the authenticity of the report will be confirmed at <http://www.agc-cert.com>.

INTERNAL VIEW OF EUT-3



---END OF REPORT---

The results shown in this test report refer only to the sample(s) tested unless otherwise stated and the sample(s) are retained for 30 days only. The document is issued by AGC, this document cannot be reproduced except in full with our prior written permission. The more details and the authenticity of the report will be confirmed at <http://www.agc-cert.com>.