

Test Laboratory: Huatongwei International Inspection Co., Ltd.,SAR Lab

Date: 10/24/2019

WCDMA Band II

Communication System: UID 0, Generic UMTS (0); Frequency: 1880 MHz;Duty Cycle: 1:1

Medium parameters used: $f = 1880$ MHz; $\sigma = 1.441$ S/m; $\epsilon_r = 41.507$; $\rho = 1000$ kg/m³

Phantom section: Flat Section

Ambient Temperature:22.5°C;Liquid Temperature:22.2°C;

DASY Configuration:

- Probe: EX3DV4 - SN7494; ConvF(8.57, 8.57, 8.57) @ 1880 MHz; Calibrated: 3/25/2019
- Sensor-Surface: 1.4mm (Mechanical Surface Detection)
- Electronics: DAE4 Sn1549; Calibrated: 3/19/2019
- Phantom: ELI V8.0 ; Type: QD OVA 004 AA ; Serial: 2078
- DASY52 52.10.2(1495); SEMCAD X 14.6.12(7450)

Rear/CH 9400/Area Scan (131x101x1): Interpolated grid: dx=1.500 mm, dy=1.500 mm

Maximum value of SAR (interpolated) = 4.39 W/kg

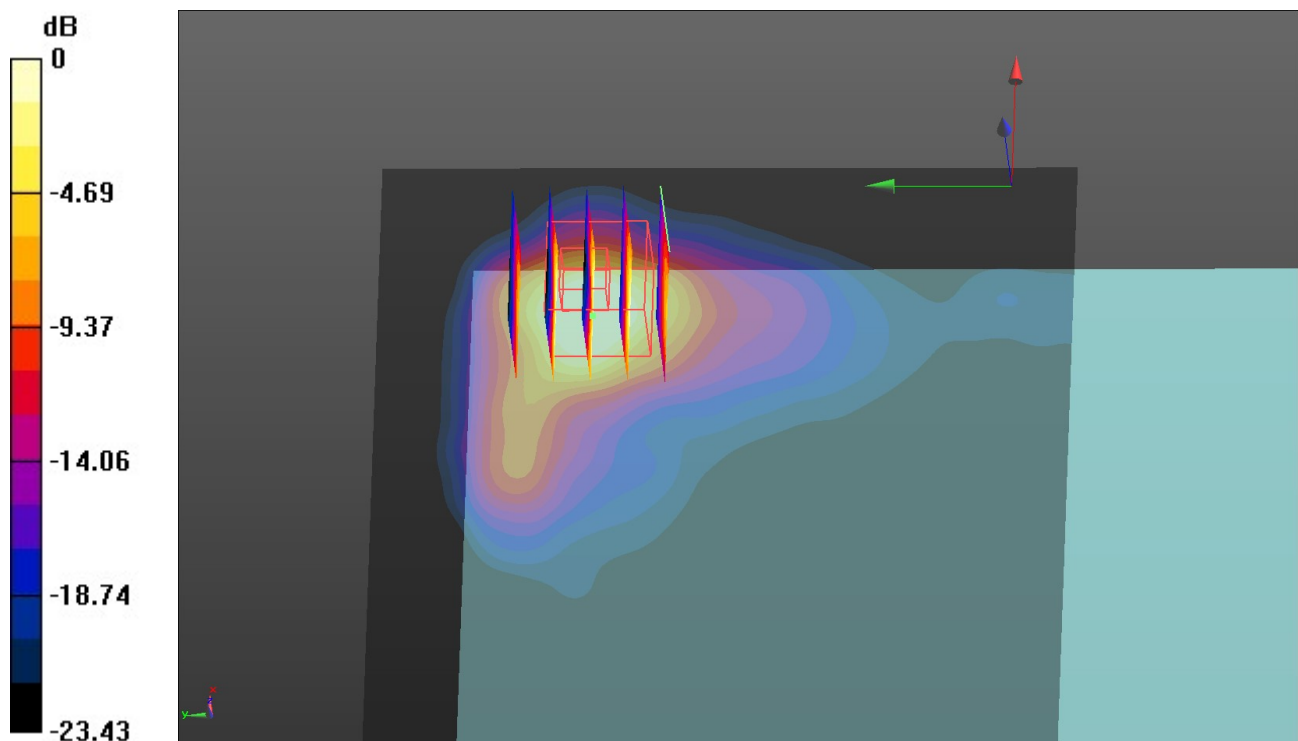
Rear/CH 9400/Zoom Scan (5x5x7)/Cube 0: Measurement grid: dx=8mm, dy=8mm, dz=5mm

Reference Value = 2.035 V/m; Power Drift = 0.03 dB

Peak SAR (extrapolated) = 3.99 W/kg

SAR(1 g) = 1.33 W/kg; SAR(10 g) = 0.628 W/kg

Maximum value of SAR (measured) = 2.54 W/kg



0 dB = 2.54 W/kg = 4.05 dBW/kg

Test Laboratory: Huatongwei International Inspection Co., Ltd.,SAR Lab

Date: 10/14/2019

WCDMA Band IV

Communication System: UID 0, Generic UMTS (0); Frequency: 1752.6 MHz;Duty Cycle: 1:1

Medium parameters used (interpolated): $f = 1752.6$ MHz; $\sigma = 1.364$ S/m; $\epsilon_r = 41.688$; $\rho = 1000$ kg/m³

Phantom section: Flat Section

Ambient Temperature:22.3°C;Liquid Temperature:21.9°C;

DASY Configuration:

- Probe: EX3DV4 - SN7494; ConvF(8.91, 8.91, 8.91) @ 1752.6 MHz; Calibrated: 3/25/2019
- Sensor-Surface: 1.4mm (Mechanical Surface Detection)
- Electronics: DAE4 Sn1549; Calibrated: 3/19/2019
- Phantom: ELI V8.0 ; Type: QD OVA 004 AA ; Serial: 2078
- DASY52 52.10.2(1495); SEMCAD X 14.6.12(7450)

Rear/CH 1513/Area Scan (121x101x1): Interpolated grid: dx=1.500 mm, dy=1.500 mm[Info: Interpolated medium parameters used for SAR evaluation.](#)

Maximum value of SAR (interpolated) = 0.586 W/kg

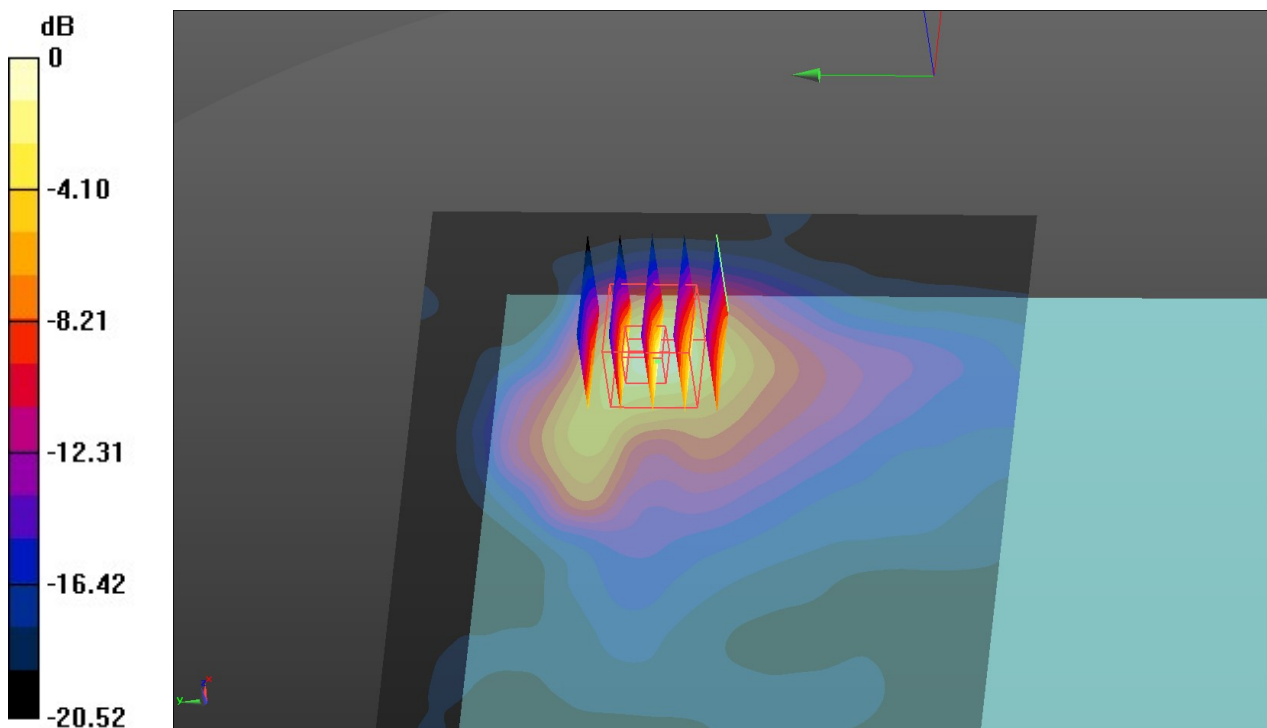
Rear/CH 1513/Zoom Scan (5x5x7)/Cube 0: Measurement grid: dx=8mm, dy=8mm, dz=5mm

Reference Value = 2.358 V/m; Power Drift = -0.16 dB

Peak SAR (extrapolated) = 0.825 W/kg

SAR(1 g) = 0.375 W/kg; SAR(10 g) = 0.179 W/kg[Info: Interpolated medium parameters used for SAR evaluation.](#)

Maximum value of SAR (measured) = 0.618 W/kg



0 dB = 0.618 W/kg = -2.09 dBW/kg

Test Laboratory: Huatongwei International Inspection Co., Ltd.,SAR Lab

Date: 10/12/2019

WCDMA Band V

Communication System: UID 0, Generic UMTS (0); Frequency: 846.6 MHz;Duty Cycle: 1:1

Medium parameters used (interpolated): $f = 846.6$ MHz; $\sigma = 0.92$ S/m; $\epsilon_r = 43.467$; $\rho = 1000$ kg/m³

Phantom section: Flat Section

Ambient Temperature:22.5°C;Liquid Temperature:22.3°C;

DASY Configuration:

- Probe: EX3DV4 - SN7494; ConvF(10.41, 10.41, 10.41) @ 846.6 MHz; Calibrated: 3/25/2019
- Sensor-Surface: 1.4mm (Mechanical Surface Detection)
- Electronics: DAE4 Sn1549; Calibrated: 3/19/2019
- Phantom: ELI V8.0 ; Type: QD OVA 004 AA ; Serial: 2078
- DASY52 52.10.2(1495); SEMCAD X 14.6.12(7450)

Rear/CH 4233/Area Scan (121x101x1): Interpolated grid: dx=1.500 mm, dy=1.500 mm**Info:** Interpolated medium parameters used for SAR evaluation.

Maximum value of SAR (interpolated) = 0.328 W/kg

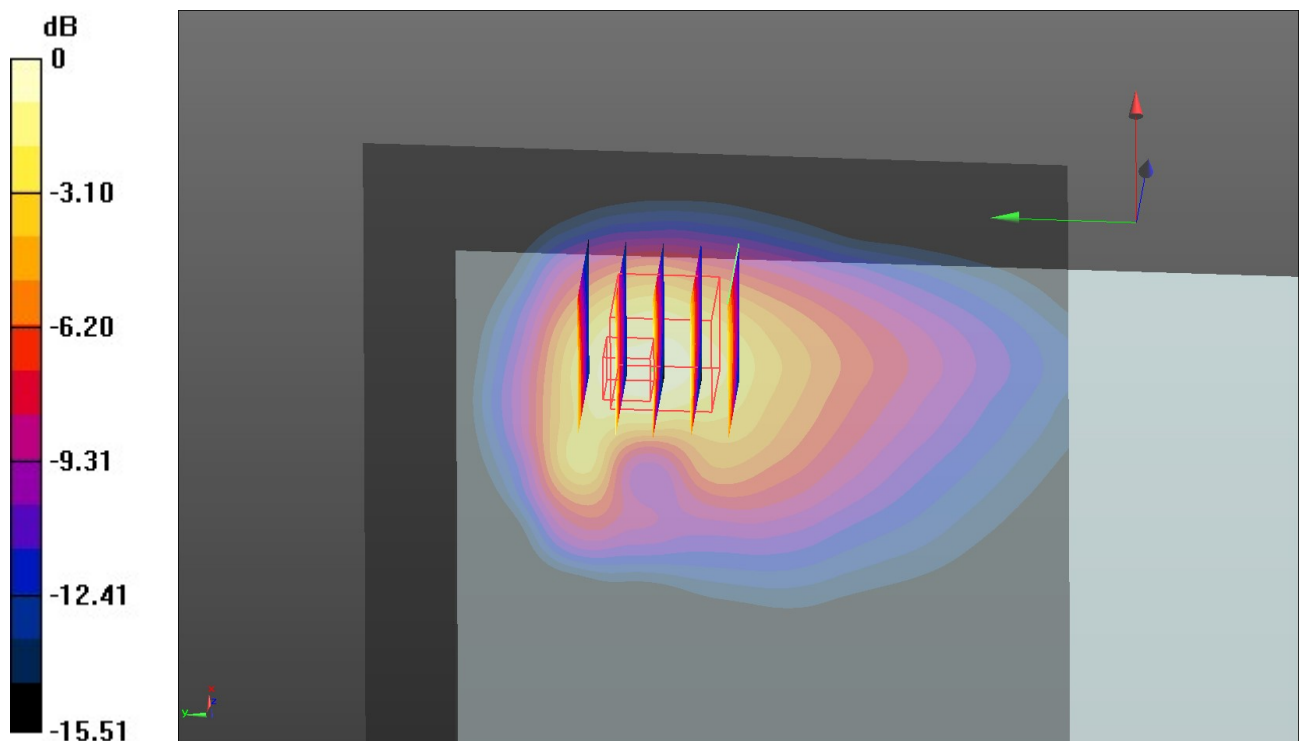
Rear/CH 4233/Zoom Scan (5x5x7)/Cube 0: Measurement grid: dx=8mm, dy=8mm, dz=5mm

Reference Value = 2.702 V/m; Power Drift = -0.11 dB

Peak SAR (extrapolated) = 0.516 W/kg

SAR(1 g) = 0.213 W/kg; SAR(10 g) = 0.127 W/kg**Info:** Interpolated medium parameters used for SAR evaluation.

Maximum value of SAR (measured) = 0.364 W/kg



0 dB = 0.364 W/kg = -4.39 dBW/kg

Test Laboratory: Huatongwei International Inspection Co., Ltd.,SAR Lab

Date: 10/24/2019

LTE Band 2

Communication System: UID 0, Generic LTE-FDD (0); Frequency: 1900 MHz;Duty Cycle: 1:1

Medium parameters used: $f = 1900$ MHz; $\sigma = 1.453$ S/m; $\epsilon_r = 41.481$; $\rho = 1000$ kg/m³

Phantom section: Flat Section

Ambient Temperature:22.5°C;Liquid Temperature:22.2°C;

DASY Configuration:

- Probe: EX3DV4 - SN7494; ConvF(8.57, 8.57, 8.57) @ 1900 MHz; Calibrated: 3/25/2019
- Sensor-Surface: 1.4mm (Mechanical Surface Detection)
- Electronics: DAE4 Sn1549; Calibrated: 3/19/2019
- Phantom: ELI V8.0 ; Type: QD OVA 004 AA ; Serial: 2078
- DASY52 52.10.2(1495); SEMCAD X 14.6.12(7450)

Rear/CH 19100/Area Scan (121x101x1): Interpolated grid: dx=1.500 mm, dy=1.500 mm
Maximum value of SAR (interpolated) = 4.28 W/kg

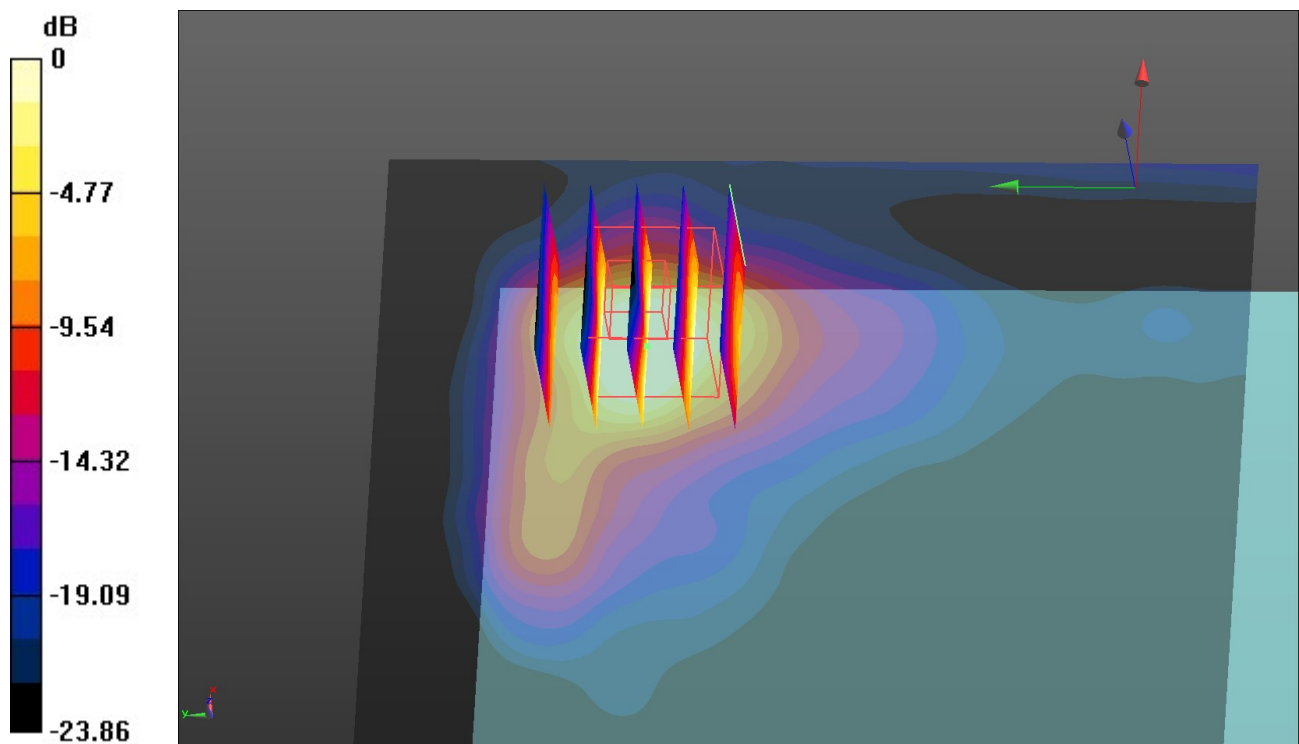
Rear/CH 19100/Zoom Scan (5x5x7)/Cube 0: Measurement grid: dx=8mm, dy=8mm, dz=5mm

Reference Value = 8.817 V/m; Power Drift = -0.19 dB

Peak SAR (extrapolated) = 3.71 W/kg

SAR(1 g) = 1.24 W/kg; SAR(10 g) = 0.597 W/kg

Maximum value of SAR (measured) = 2.42 W/kg



0 dB = 2.42 W/kg = 3.84 dBW/kg

Test Laboratory: Huatongwei International Inspection Co., Ltd.,SAR Lab

Date: 10/14/2019

LTE Band 4

Communication System: UID 0, Generic LTE-FDD (0); Frequency: 1732.5 MHz;Duty Cycle: 1:1

Medium parameters used (interpolated): $f = 1732.5$ MHz; $\sigma = 1.353$ S/m; $\epsilon_r = 41.719$; $\rho = 1000$ kg/m³

Phantom section: Flat Section

Ambient Temperature:22.6°C;Liquid Temperature:22.3°C;

DASY Configuration:

- Probe: EX3DV4 - SN7494; ConvF(8.91, 8.91, 8.91) @ 1732.5 MHz; Calibrated: 3/25/2019
- Sensor-Surface: 1.4mm (Mechanical Surface Detection)
- Electronics: DAE4 Sn1549; Calibrated: 3/19/2019
- Phantom: ELI V8.0 ; Type: QD OVA 004 AA ; Serial: 2078
- DASY52 52.10.2(1495); SEMCAD X 14.6.12(7450)

Rear/CH 20175/Area Scan (121x101x1): Interpolated grid: dx=1.500 mm, dy=1.500 mm[Info: Interpolated medium parameters used for SAR evaluation.](#)

Maximum value of SAR (interpolated) = 0.450 W/kg

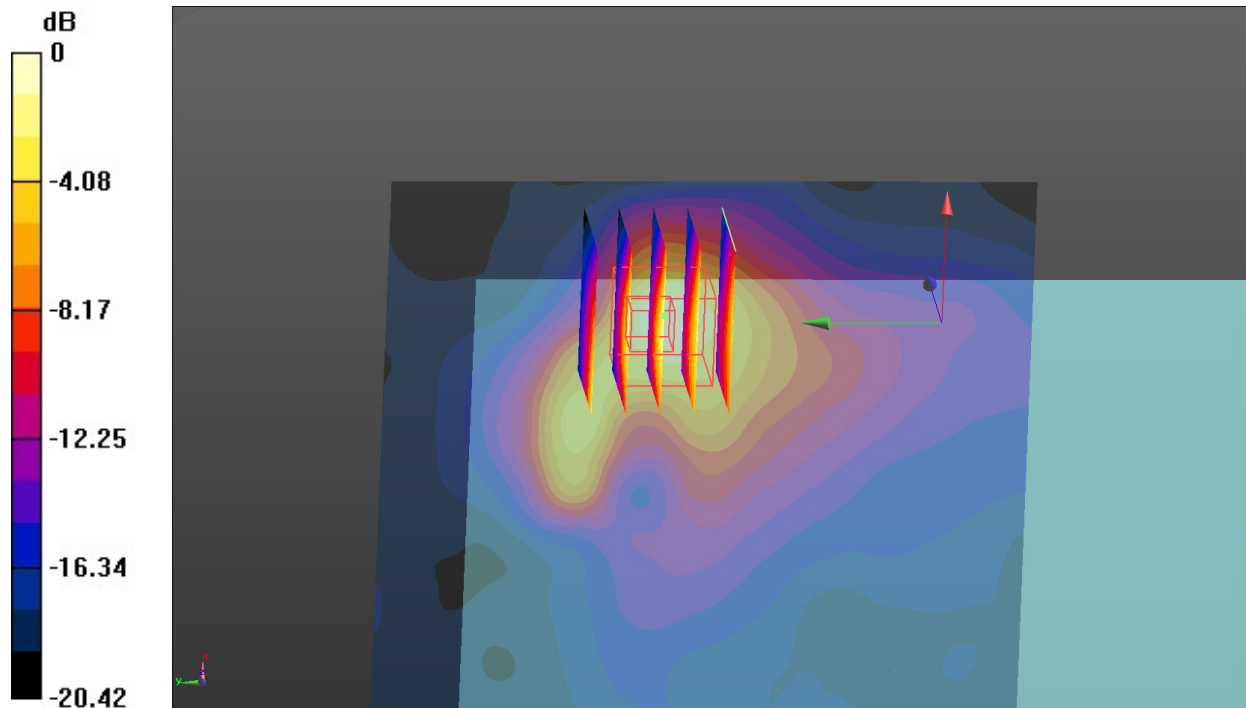
Rear/CH 20175/Zoom Scan (6x5x7)/Cube 0: Measurement grid: dx=8mm, dy=8mm, dz=5mm

Reference Value = 2.068 V/m; Power Drift = -0.15 dB

Peak SAR (extrapolated) = 0.698 W/kg

SAR(1 g) = 0.289 W/kg; SAR(10 g) = 0.141 W/kg[Info: Interpolated medium parameters used for SAR evaluation.](#)

Maximum value of SAR (measured) = 0.453 W/kg



0 dB = 0.453 W/kg = -3.44 dBW/kg

Test Laboratory: Huatongwei International Inspection Co., Ltd.,SAR Lab

Date: 10/12/2019

LTE Band 5

Communication System: UID 0, Generic LTE-FDD (0); Frequency: 829 MHz;Duty Cycle: 1:1

Medium parameters used (interpolated): $f = 829$ MHz; $\sigma = 0.914$ S/m; $\epsilon_r = 43.507$; $\rho = 1000$ kg/m³

Phantom section: Flat Section

Ambient Temperature:22.6°C;Liquid Temperature:22.4°C;

DASY Configuration:

- Probe: EX3DV4 - SN7494; ConvF(10.41, 10.41, 10.41) @ 829 MHz; Calibrated: 3/25/2019
- Sensor-Surface: 1.4mm (Mechanical Surface Detection)
- Electronics: DAE4 Sn1549; Calibrated: 3/19/2019
- Phantom: ELI V8.0 ; Type: QD OVA 004 AA ; Serial: 2078
- DASY52 52.10.2(1495); SEMCAD X 14.6.12(7450)

Rear/CH 20450/Area Scan (121x101x1): Interpolated grid: dx=1.500 mm, dy=1.500 mm**Info:** Interpolated medium parameters used for SAR evaluation.

Maximum value of SAR (interpolated) = 0.391 W/kg

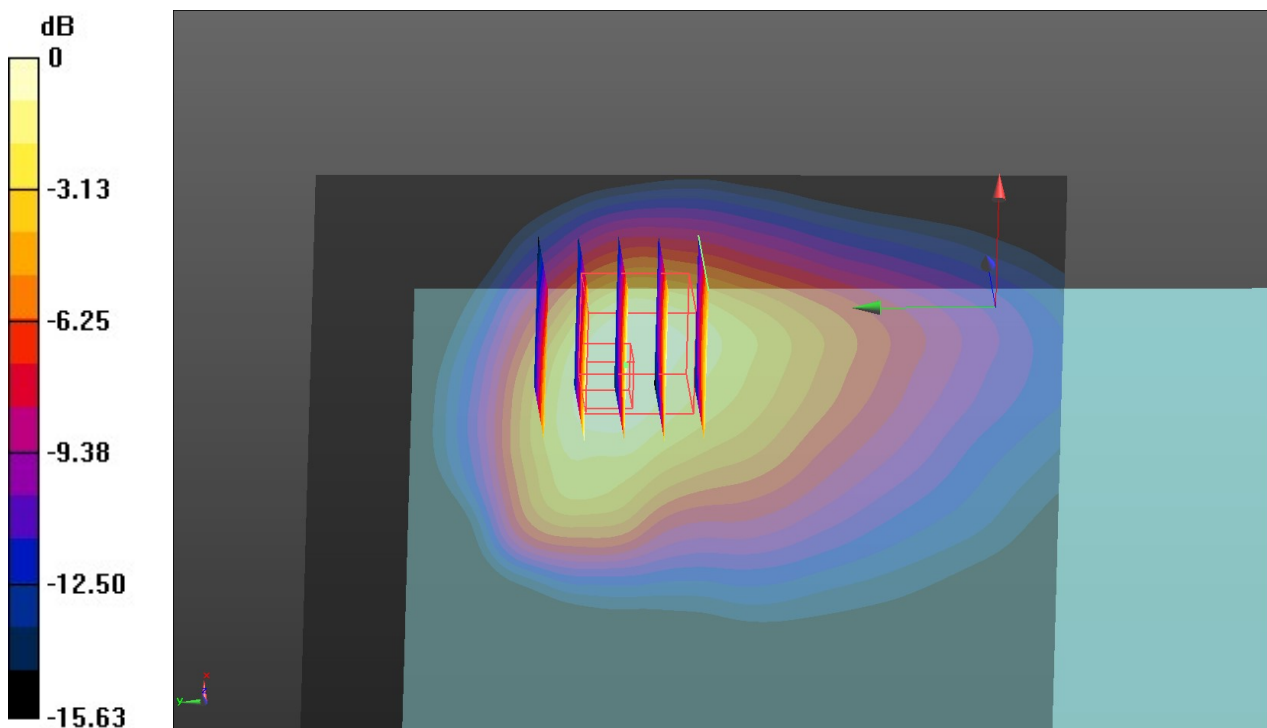
Rear/CH 20450/Zoom Scan (5x5x7)/Cube 0: Measurement grid: dx=8mm, dy=8mm, dz=5mm

Reference Value = 2.514 V/m; Power Drift = 0.18 dB

Peak SAR (extrapolated) = 0.490 W/kg

SAR(1 g) = 0.206 W/kg; SAR(10 g) = 0.123 W/kg**Info:** Interpolated medium parameters used for SAR evaluation.

Maximum value of SAR (measured) = 0.343 W/kg



0 dB = 0.343 W/kg = -4.65 dBW/kg

Test Laboratory: Huatongwei International Inspection Co., Ltd.,SAR Lab

Date: 10/16/2019

LTE Band 7

Communication System: UID 0, Generic LTE-FDD (0); Frequency: 2535 MHz;Duty Cycle: 1:1

Medium parameters used: $f = 2535$ MHz; $\sigma = 1.928$ S/m; $\epsilon_r = 40.552$; $\rho = 1000$ kg/m³

Phantom section: Flat Section

Ambient Temperature:22.8°C;Liquid Temperature:22.5°C;

DASY Configuration:

- Probe: EX3DV4 - SN7494; ConvF(7.9, 7.9, 7.9) @ 2535 MHz; Calibrated: 3/25/2019
- Sensor-Surface: 1.4mm (Mechanical Surface Detection)
- Electronics: DAE4 Sn1549; Calibrated: 3/19/2019
- Phantom: ELI V8.0 ; Type: QD OVA 004 AA ; Serial: 2078
- DASY52 52.10.2(1495); SEMCAD X 14.6.12(7450)

Rear/CH 21100/Area Scan (141x121x1): Interpolated grid: dx=1.200 mm, dy=1.200 mm
Maximum value of SAR (interpolated) = 0.346 W/kg

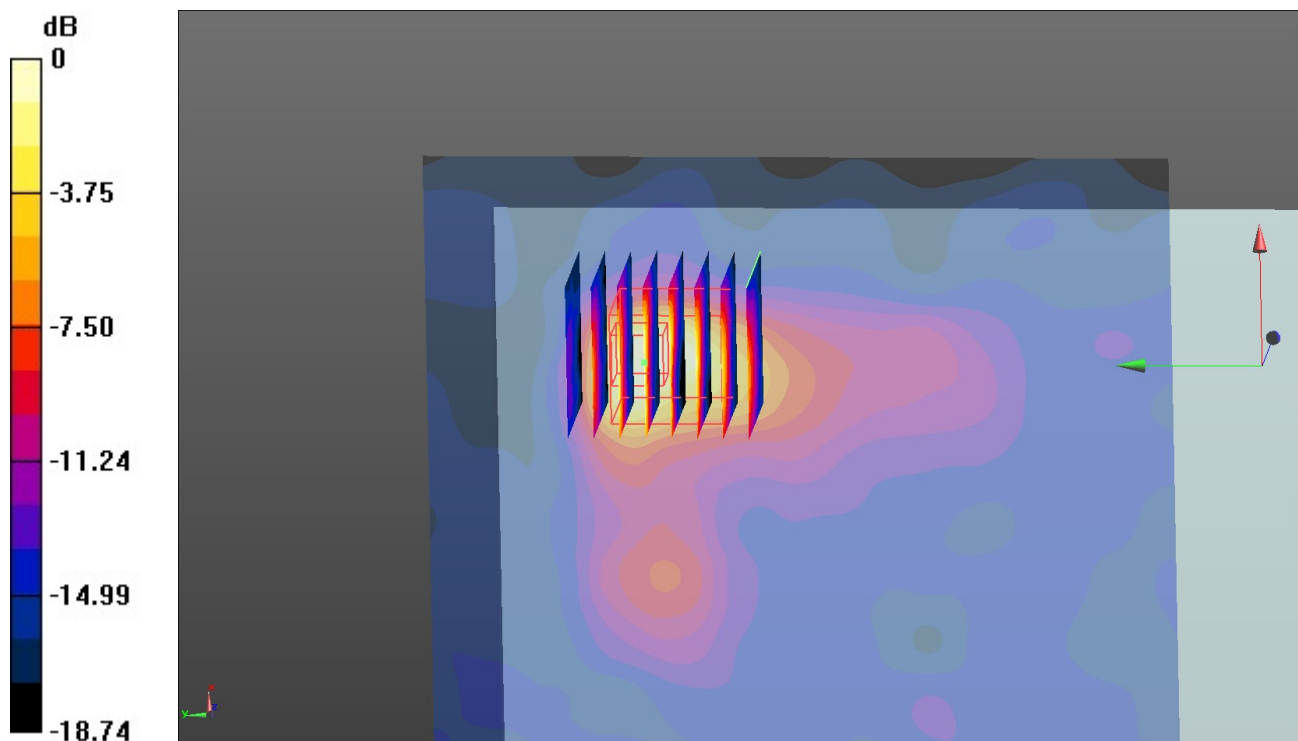
Rear/CH 21100/Zoom Scan (7x8x7)/Cube 0: Measurement grid: dx=5mm, dy=5mm, dz=5mm

Reference Value = 1.061 V/m; Power Drift = 0.14 dB

Peak SAR (extrapolated) = 0.438 W/kg

SAR(1 g) = 0.136 W/kg; SAR(10 g) = 0.060 W/kg

Maximum value of SAR (measured) = 0.272 W/kg



0 dB = 0.272 W/kg = -5.65 dBW/kg

Test Laboratory: Huatongwei International Inspection Co., Ltd.,SAR Lab

Date: 10/11/2019

LTE Band 12

Communication System: UID 0, Generic LTE-FDD (0); Frequency: 704 MHz;Duty Cycle: 1:1

Medium parameters used (interpolated): $f = 704$ MHz; $\sigma = 0.868$ S/m; $\epsilon_r = 43.874$; $\rho = 1000$ kg/m³

Phantom section: Flat Section

Ambient Temperature:22.5°C;Liquid Temperature:22.2°C;

DASY Configuration:

- Probe: EX3DV4 - SN7494; ConvF(10.74, 10.74, 10.74) @ 704 MHz; Calibrated: 3/25/2019
- Sensor-Surface: 1.4mm (Mechanical Surface Detection)
- Electronics: DAE4 Sn1549; Calibrated: 3/19/2019
- Phantom: ELI V8.0 ; Type: QD OVA 004 AA ; Serial: 2078
- DASY52 52.10.2(1495); SEMCAD X 14.6.12(7450)

Rear/CH 23060/Area Scan (121x101x1): Interpolated grid: dx=1.500 mm, dy=1.500 mm**Info:** Interpolated medium parameters used for SAR evaluation.

Maximum value of SAR (interpolated) = 0.199 W/kg

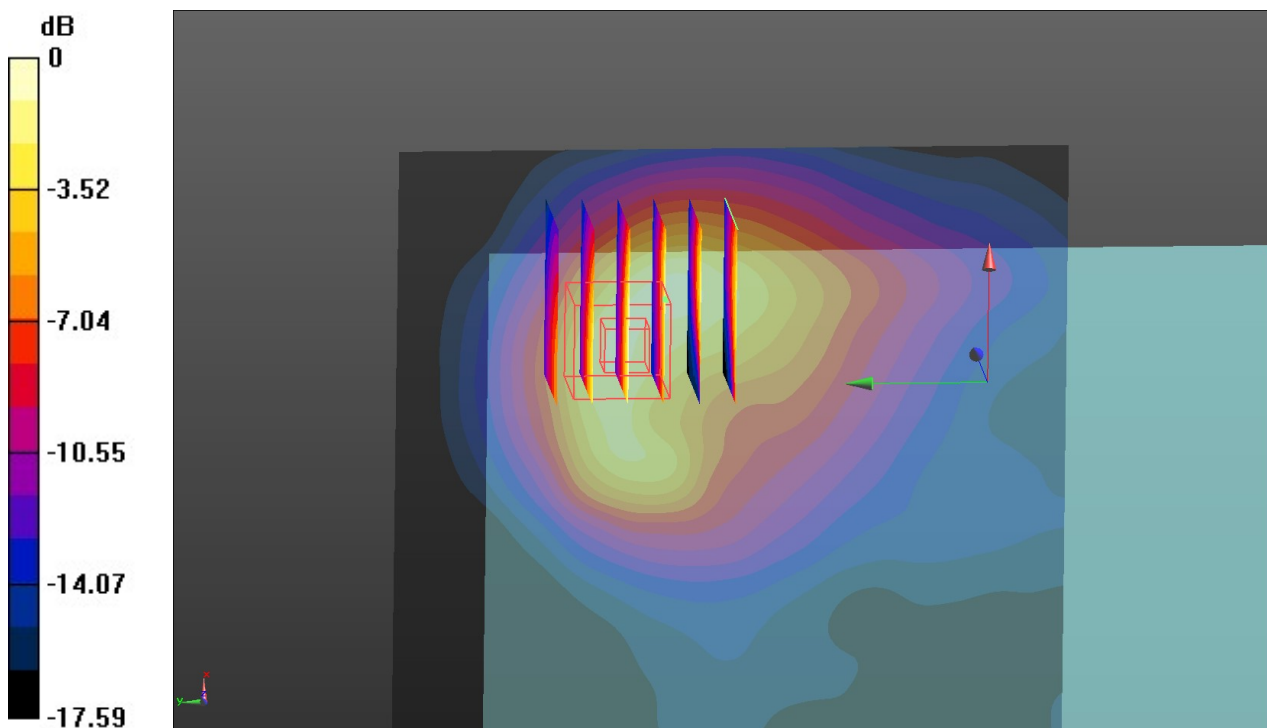
Rear/CH 23060/Zoom Scan (6x6x7)/Cube 0: Measurement grid: dx=8mm, dy=8mm, dz=5mm

Reference Value = 2.487 V/m; Power Drift = -0.05 dB

Peak SAR (extrapolated) = 0.279 W/kg

SAR(1 g) = 0.130 W/kg; SAR(10 g) = 0.070 W/kg**Info:** Interpolated medium parameters used for SAR evaluation.

Maximum value of SAR (measured) = 0.216 W/kg



0 dB = 0.216 W/kg = -6.66 dBW/kg

Test Laboratory: Huatongwei International Inspection Co., Ltd.,SAR Lab

Date: 10/11/2019

LTE Band 17

Communication System: UID 0, Generic LTE-FDD (0); Frequency: 709 MHz;Duty Cycle: 1:1

Medium parameters used (interpolated): $f = 709$ MHz; $\sigma = 0.87$ S/m; $\epsilon_r = 43.862$; $\rho = 1000$ kg/m³

Phantom section: Flat Section

Ambient Temperature:22.5°C;Liquid Temperature:22.2°C;

DASY Configuration:

- Probe: EX3DV4 - SN7494; ConvF(10.74, 10.74, 10.74) @ 709 MHz; Calibrated: 3/25/2019
- Sensor-Surface: 1.4mm (Mechanical Surface Detection)
- Electronics: DAE4 Sn1549; Calibrated: 3/19/2019
- Phantom: ELI V8.0 ; Type: QD OVA 004 AA ; Serial: 2078
- DASY52 52.10.2(1495); SEMCAD X 14.6.12(7450)

Rear/CH 23780/Area Scan (121x101x1): Interpolated grid: dx=1.500 mm, dy=1.500 mm**Info:** Interpolated medium parameters used for SAR evaluation.

Maximum value of SAR (interpolated) = 0.211 W/kg

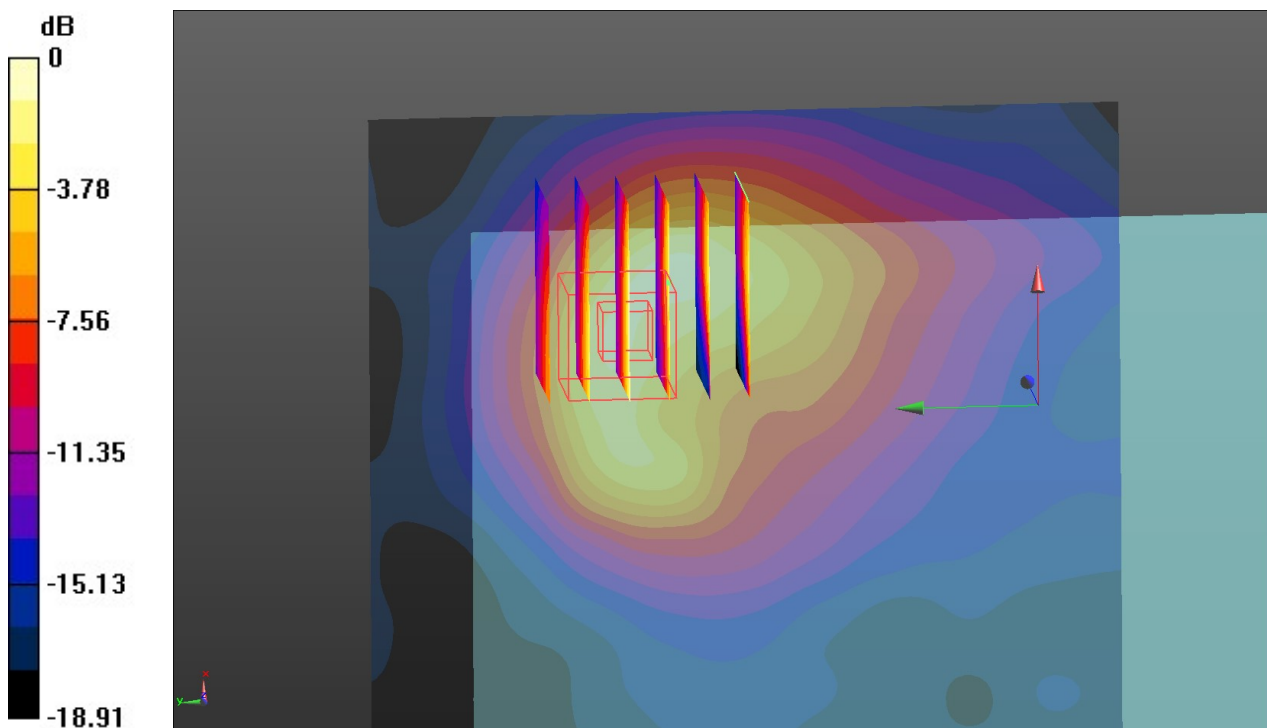
Rear/CH 23780/Zoom Scan (6x6x7)/Cube 0: Measurement grid: dx=8mm, dy=8mm, dz=5mm

Reference Value = 2.493 V/m; Power Drift = -0.10 dB

Peak SAR (extrapolated) = 0.304 W/kg

SAR(1 g) = 0.139 W/kg; SAR(10 g) = 0.075 W/kg**Info:** Interpolated medium parameters used for SAR evaluation.

Maximum value of SAR (measured) = 0.234 W/kg



0 dB = 0.234 W/kg = -6.31 dBW/kg

Test Laboratory: Huatongwei International Inspection Co., Ltd.,SAR Lab

Date: 10/16/2019

LTE Band 41

Communication System: UID 0, Generic LTE-TDD (0); Frequency: 2549.5 MHz;Duty Cycle: 1:1.57979

Medium parameters used: $f = 2550$ MHz; $\sigma = 1.941$ S/m; $\epsilon_r = 40.525$; $\rho = 1000$ kg/m³

Phantom section: Flat Section

Ambient Temperature:22.6°C;Liquid Temperature:22.4°C;

DASY Configuration:

- Probe: EX3DV4 - SN7494; ConvF(7.9, 7.9, 7.9) @ 2549.5 MHz; Calibrated: 3/25/2019
- Sensor-Surface: 1.4mm (Mechanical Surface Detection)
- Electronics: DAE4 Sn1549; Calibrated: 3/19/2019
- Phantom: ELI V8.0 ; Type: QD OVA 004 AA ; Serial: 2078
- DASY52 52.10.2(1495); SEMCAD X 14.6.12(7450)

Rear/CH 40185/Area Scan (151x121x1): Interpolated grid: dx=1.200 mm, dy=1.200 mm
Maximum value of SAR (interpolated) = 0.0572 W/kg

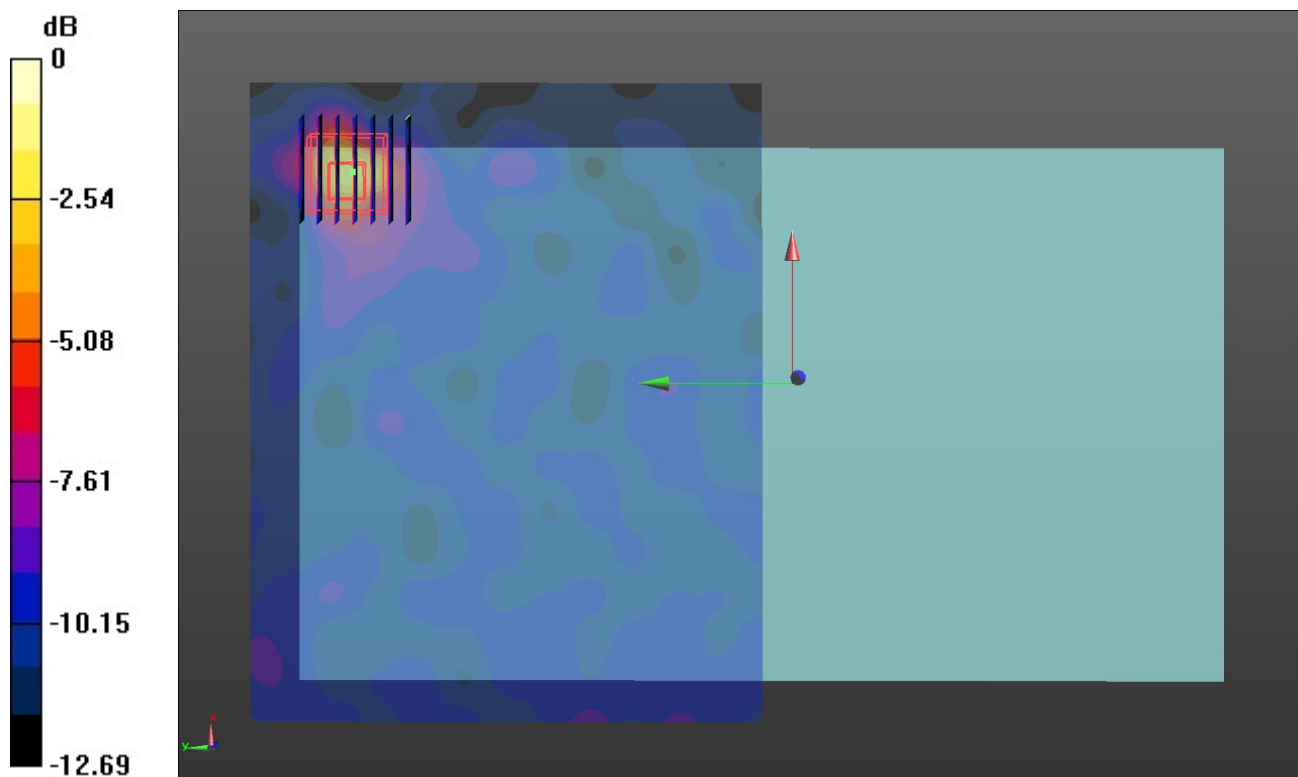
Rear/CH 40185/Zoom Scan (7x7x7)/Cube 0: Measurement grid: dx=5mm, dy=5mm, dz=5mm

Reference Value = 1.681 V/m; Power Drift = -0.10 dB

Peak SAR (extrapolated) = 0.157 W/kg

SAR(1 g) = 0.042 W/kg; SAR(10 g) = 0.017 W/kg

Maximum value of SAR (measured) = 0.0882 W/kg



0 dB = 0.0882 W/kg = -10.55 dBW/kg

Test Laboratory: Huatongwei International Inspection Co., Ltd.,SAR Lab

Date: 10/15/2019

WiFi 2.4G

Communication System: UID 0, Generic WIFI (0); Frequency: 2412 MHz;Duty Cycle: 1:1

Medium parameters used (interpolated): $f = 2412$ MHz; $\sigma = 1.825$ S/m; $\epsilon_r = 40.781$; $\rho = 1000$ kg/m³

Phantom section: Flat Section

Ambient Temperature:22.3°C;Liquid Temperature:22.1°C;

DASY Configuration:

- Probe: EX3DV4 - SN7494; ConvF(7.9, 7.9, 7.9) @ 2412 MHz; Calibrated: 3/25/2019
- Sensor-Surface: 1.4mm (Mechanical Surface Detection)
- Electronics: DAE4 Sn1549; Calibrated: 3/19/2019
- Phantom: ELI V8.0 ; Type: QD OVA 004 AA ; Serial: 2078
- DASY52 52.10.2(1495); SEMCAD X 14.6.12(7450)

Rear/CH 1/Area Scan (141x121x1): Interpolated grid: dx=1.200 mm, dy=1.200 mm[Info: Interpolated medium parameters used for SAR evaluation.](#)

Maximum value of SAR (interpolated) = 2.57 W/kg

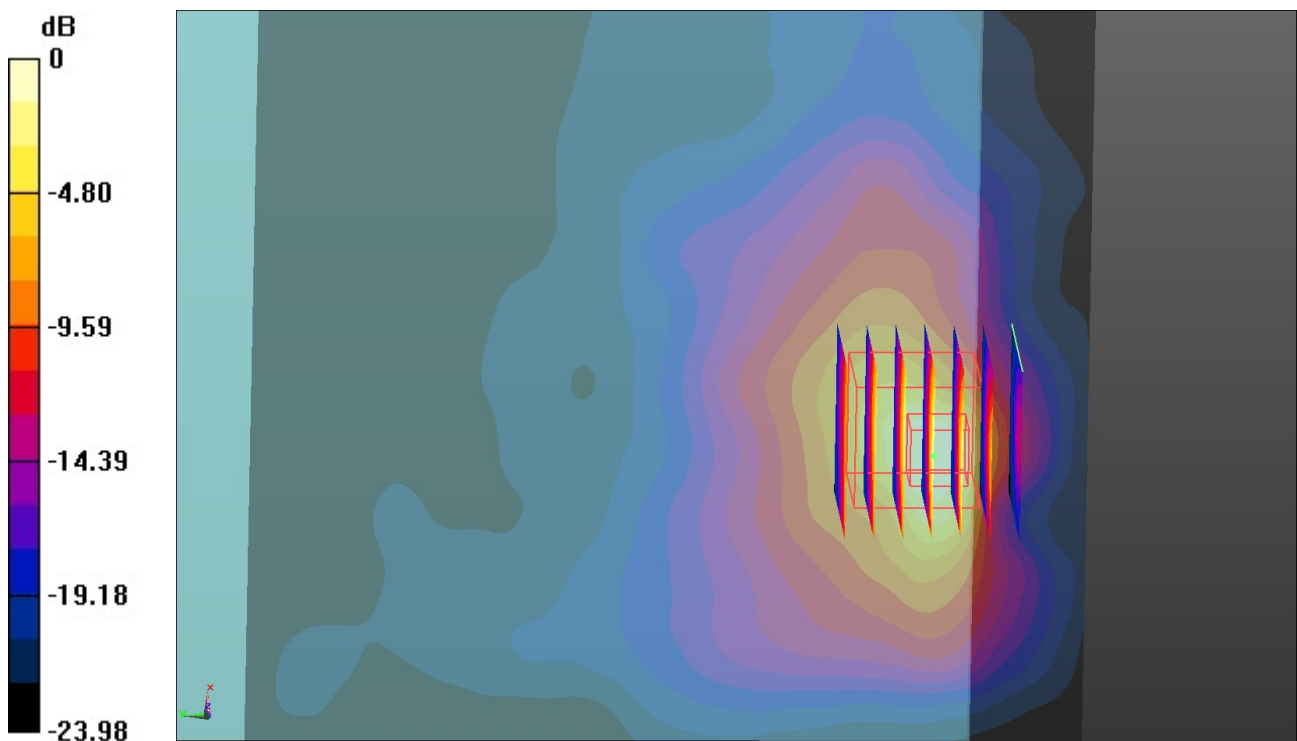
Rear/CH 1/Zoom Scan (7x7x7)/Cube 0: Measurement grid: dx=5mm, dy=5mm, dz=5mm

Reference Value = 1.742 V/m; Power Drift = 0.14 dB

Peak SAR (extrapolated) = 2.90 W/kg

SAR(1 g) = 1.05 W/kg; SAR(10 g) = 0.410 W/kg[Info: Interpolated medium parameters used for SAR evaluation.](#)

Maximum value of SAR (measured) = 2.05 W/kg



0 dB = 2.05 W/kg = 3.12 dBW/kg

Test Laboratory: Huatongwei International Inspection Co., Ltd.,SAR Lab

Date: 10/17/2019

WiFi 5G U-NII-1

Communication System: UID 0, Generic WIFI (0); Frequency: 5220 MHz;Duty Cycle: 1:1

Medium parameters used (interpolated): $f = 5220$ MHz; $\sigma = 4.641$ S/m; $\epsilon_r = 35.655$; $\rho = 1000$ kg/m³

Phantom section: Flat Section

Ambient Temperature:22.6°C;Liquid Temperature:22.3°C;

DASY Configuration:

- Probe: EX3DV4 - SN7494; ConvF(5.56, 5.56, 5.56) @ 5220 MHz; Calibrated: 3/25/2019
- Sensor-Surface: 1.4mm (Mechanical Surface Detection)
- Electronics: DAE4 Sn1549; Calibrated: 3/19/2019
- Phantom: ELI V8.0 ; Type: QD OVA 004 AA ; Serial: 2078
- DASY52 52.10.2(1495); SEMCAD X 14.6.12(7450)

Rear/CH 44/Area Scan (181x161x1): Interpolated grid: dx=1.000 mm, dy=1.000 mm[Info: Interpolated medium parameters used for SAR evaluation.](#)

Maximum value of SAR (interpolated) = 0.621 W/kg

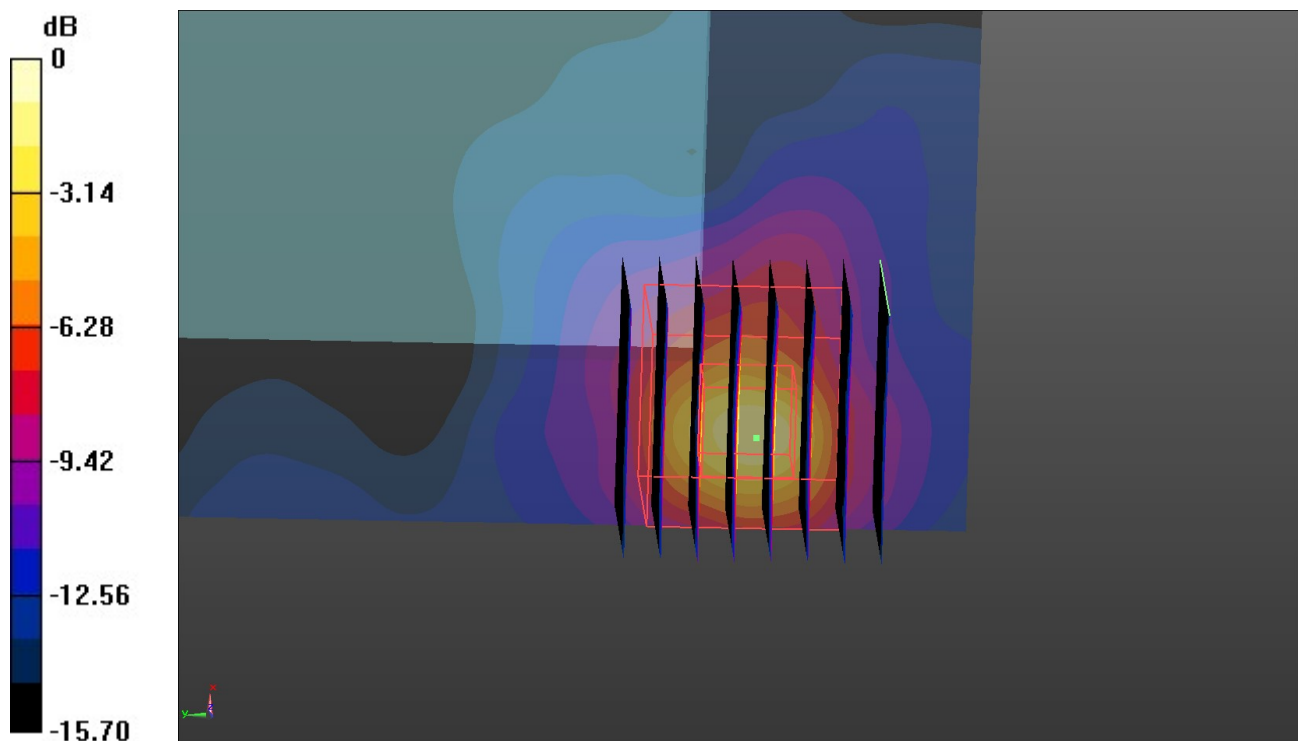
Rear/CH 44/Zoom Scan (8x8x7)/Cube 0: Measurement grid: dx=4mm, dy=4mm, dz=1.4mm

Reference Value = 1.803 V/m; Power Drift = -0.19 dB

Peak SAR (extrapolated) = 1.62 W/kg

SAR(1 g) = 0.292 W/kg; SAR(10 g) = 0.082 W/kg[Info: Interpolated medium parameters used for SAR evaluation.](#)

Maximum value of SAR (measured) = 0.812 W/kg



0 dB = 0.812 W/kg = -0.90 dBW/kg

Test Laboratory: Huatongwei International Inspection Co., Ltd.,SAR Lab

Date: 10/17/2019

WiFi 5G U-NII-2A

Communication System: UID 0, Generic WIFI (0); Frequency: 5280 MHz;Duty Cycle: 1:1

Medium parameters used: $f = 5280$ MHz; $\sigma = 4.71$ S/m; $\epsilon_r = 35.543$; $\rho = 1000$ kg/m³

Phantom section: Flat Section

Ambient Temperature:22.8°C;Liquid Temperature:22.5°C;

DASY Configuration:

- Probe: EX3DV4 - SN7494; ConvF(5.37, 5.37, 5.37) @ 5280 MHz; Calibrated: 3/25/2019
- Sensor-Surface: 1.4mm (Mechanical Surface Detection)
- Electronics: DAE4 Sn1549; Calibrated: 3/19/2019
- Phantom: ELI V8.0 ; Type: QD OVA 004 AA ; Serial: 2078
- DASY52 52.10.2(1495); SEMCAD X 14.6.12(7450)

Rear/CH 56/Area Scan (101x161x1): Interpolated grid: dx=1.000 mm, dy=1.000 mm

Maximum value of SAR (interpolated) = 1.24 W/kg

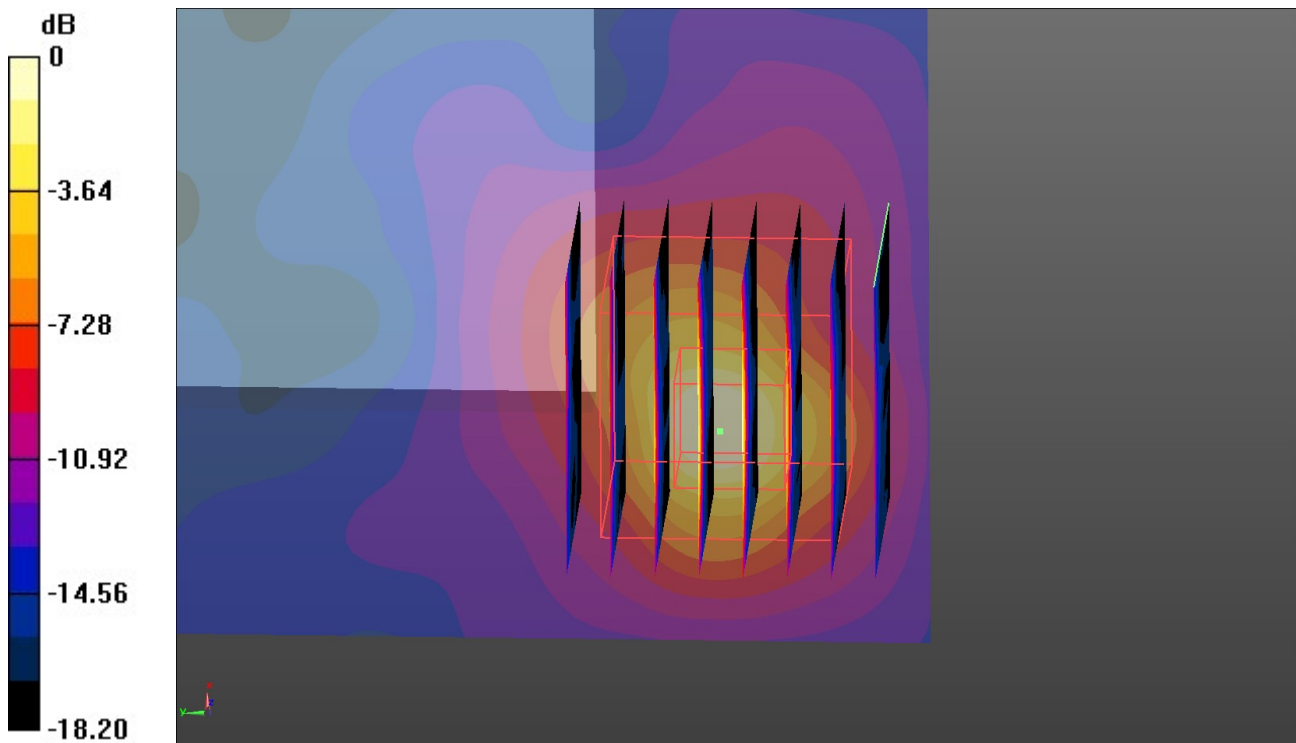
Rear/CH 56/Zoom Scan (8x8x7)/Cube 0: Measurement grid: dx=4mm, dy=4mm, dz=1.4mm

Reference Value = 2.143 V/m; Power Drift = -0.12 dB

Peak SAR (extrapolated) = 2.58 W/kg

SAR(1 g) = 0.432 W/kg; SAR(10 g) = 0.120 W/kg

Maximum value of SAR (measured) = 1.09 W/kg



0 dB = 1.09 W/kg = 0.37 dBW/kg

Test Laboratory: Huatongwei International Inspection Co., Ltd.,SAR Lab

Date: 10/18/2019

WiFi 5G U-NII-2C

Communication System: UID 0, Generic WIFI (0); Frequency: 5600 MHz;Duty Cycle: 1:1

Medium parameters used: $f = 5600$ MHz; $\sigma = 5.076$ S/m; $\epsilon_r = 34.918$; $\rho = 1000$ kg/m³

Phantom section: Flat Section

Ambient Temperature:22.8°C;Liquid Temperature:22.5°C;

DASY Configuration:

- Probe: EX3DV4 - SN7494; ConvF(4.89, 4.89, 4.89) @ 5600 MHz; Calibrated: 3/25/2019
- Sensor-Surface: 1.4mm (Mechanical Surface Detection)
- Electronics: DAE4 Sn1549; Calibrated: 3/19/2019
- Phantom: ELI V8.0 ; Type: QD OVA 004 AA ; Serial: 2078
- DASY52 52.10.2(1495); SEMCAD X 14.6.12(7450)

Rear/CH 120/Area Scan (91x151x1): Interpolated grid: dx=1.000 mm, dy=1.000 mm

Maximum value of SAR (interpolated) = 3.00 W/kg

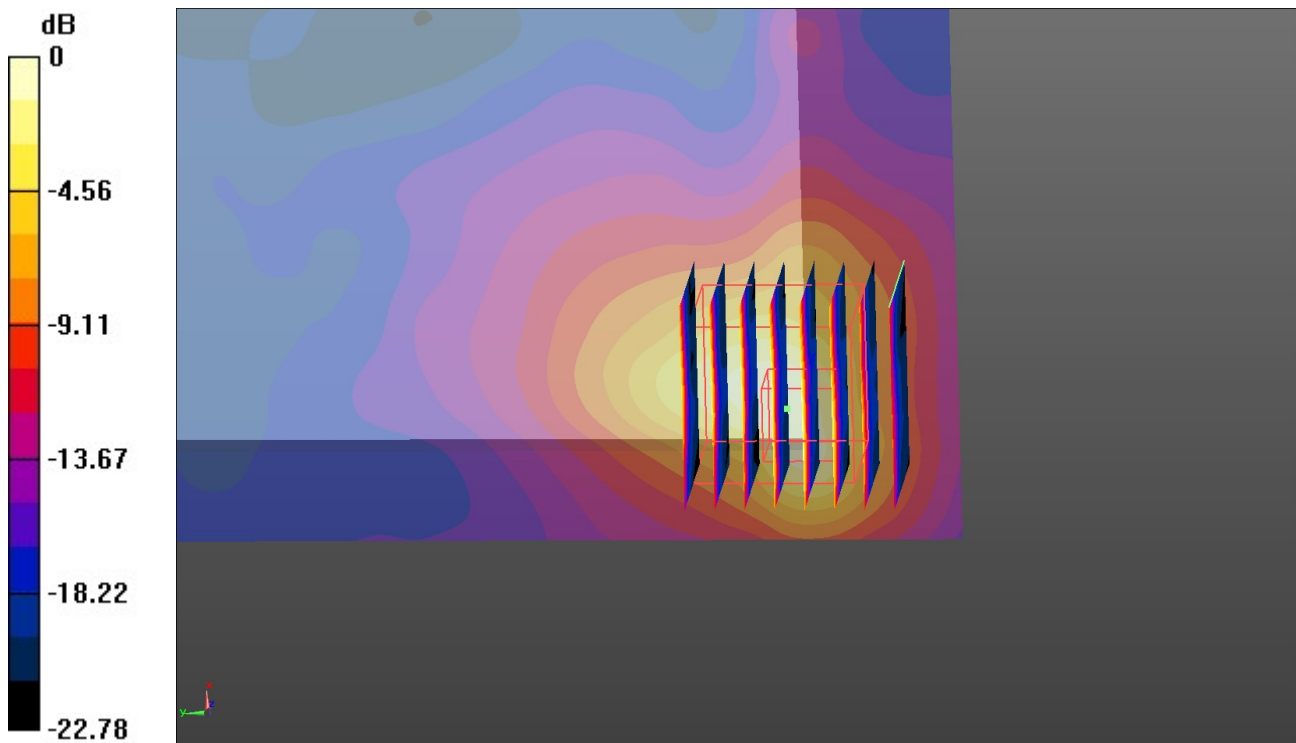
Rear/CH 120/Zoom Scan (8x8x7)/Cube 0: Measurement grid: dx=4mm, dy=4mm, dz=1.4mm

Reference Value = 1.706 V/m; Power Drift = -0.11 dB

Peak SAR (extrapolated) = 6.86 W/kg

SAR(1 g) = 1.17 W/kg; SAR(10 g) = 0.398 W/kg

Maximum value of SAR (measured) = 3.11 W/kg



0 dB = 3.11 W/kg = 4.93 dBW/kg

Test Laboratory: Huatongwei International Inspection Co., Ltd.,SAR Lab

Date: 10/24/2019

WiFi 5G U-NII-3

Communication System: UID 0, Generic WIFI (0); Frequency: 5825 MHz;Duty Cycle: 1:1

Medium parameters used (interpolated): $f = 5825$ MHz; $\sigma = 5.34$ S/m; $\epsilon_r = 34.5$; $\rho = 1000$ kg/m³

Phantom section: Flat Section

Ambient Temperature:22.6°C;Liquid Temperature:22.3°C;

DASY Configuration:

- Probe: EX3DV4 - SN7494; ConvF(4.85, 4.85, 4.85) @ 5825 MHz; Calibrated: 3/25/2019
- Sensor-Surface: 1.4mm (Mechanical Surface Detection)
- Electronics: DAE4 Sn1549; Calibrated: 3/19/2019
- Phantom: ELI V8.0 ; Type: QD OVA 004 AA ; Serial: 2078
- DASY52 52.10.2(1495); SEMCAD X 14.6.12(7450)

Rear/CH 165/Area Scan (101x151x1): Interpolated grid: dx=1.000 mm, dy=1.000 mm

Maximum value of SAR (interpolated) = 3.97 W/kg

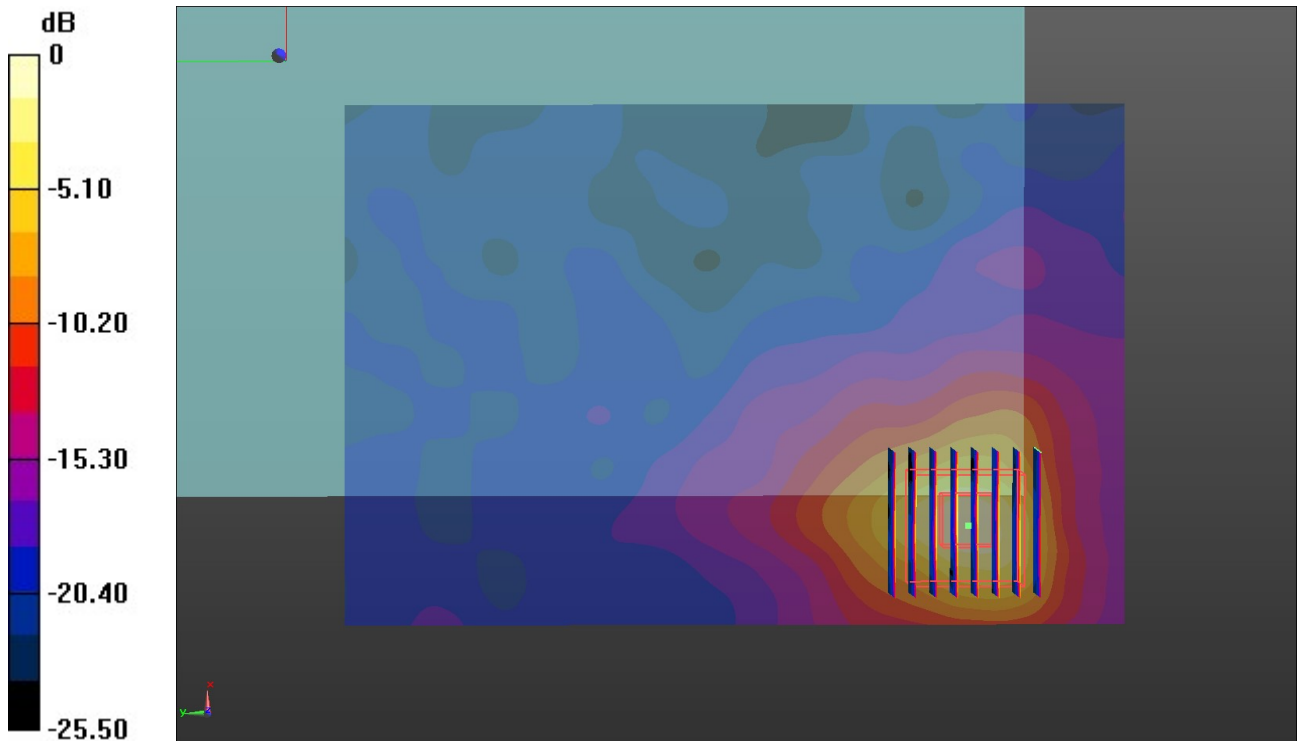
Rear/CH 165/Zoom Scan (8x8x7)/Cube 0: Measurement grid: dx=4mm, dy=4mm, dz=1.4mm

Reference Value = 1.686 V/m; Power Drift = 0.10 dB

Peak SAR (extrapolated) = 8.06 W/kg

SAR(1 g) = 1.38 W/kg; SAR(10 g) = 0.443 W/kg

Maximum value of SAR (measured) = 3.75 W/kg



0 dB = 3.75 W/kg = 5.74 dBW/kg

LTE Band 71-H-Body

Communication System: UID 0, Generic LTE-FDD (0); Frequency: 688 MHz; Duty Cycle: 1:1

Medium parameters used (interpolated): $f = 688 \text{ MHz}$; $\sigma = 0.889 \text{ S/m}$; $\epsilon_r = 43.142$; $\rho = 1000 \text{ kg/m}^3$

Phantom section: Flat Section

Ambient Temperature: 22.4°C ; Liquid Temperature: 22.2°C ;

DASY Configuration:

- Probe: EX3DV4 - SN7494; ConvF(10.6, 10.6, 10.6); Calibrated: 5/16/2022;
- Sensor-Surface: 1.4mm (Mechanical Surface Detection)
- Electronics: DAE4 Sn1549; Calibrated: 4/12/2022
- Phantom: ELI V8.0 ; Type: QD OVA 004 AA ; Serial: 2078
- DASY52 52.10.0(1446); SEMCAD X 14.6.10(7417)

Rear/CH 133372/Area Scan (121x61x1): Interpolated grid: $dx=1.500 \text{ mm}$, $dy=1.500 \text{ mm}$
 Maximum value of SAR (interpolated) = 2.67 W/kg

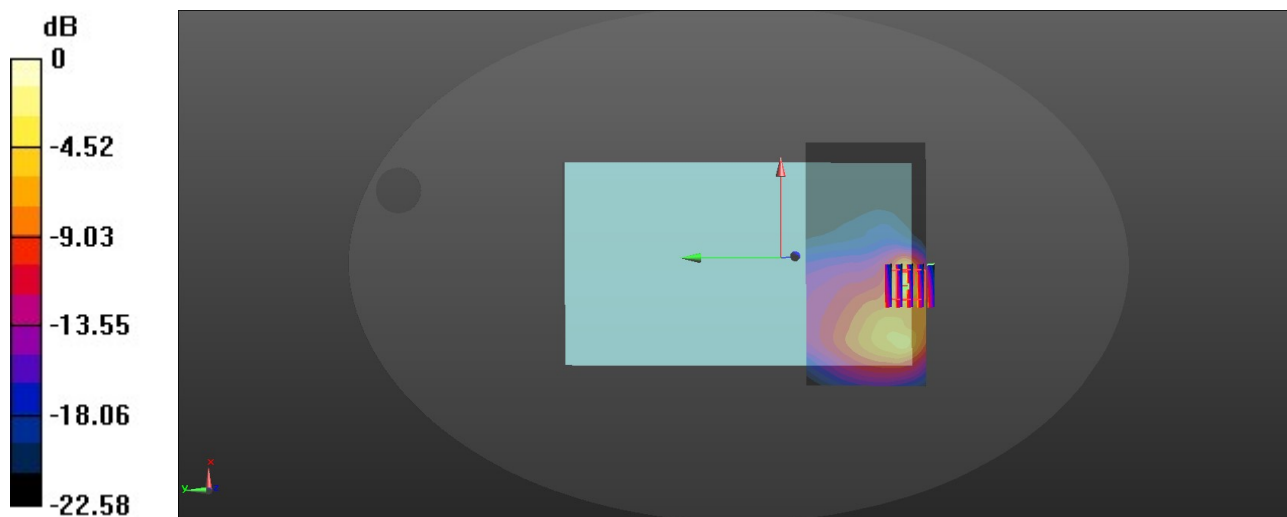
Rear/CH 133372/Zoom Scan (5x5x7)/Cube 0: Measurement grid: $dx=8\text{mm}$, $dy=8\text{mm}$, $dz=5\text{mm}$

Reference Value = 5.660 V/m ; Power Drift = -0.12 dB

Peak SAR (extrapolated) = 6.11 W/kg

SAR(1 g) = 1.2 W/kg ; SAR(10 g) = 0.435 W/kg

Maximum value of SAR (measured) = 3.29 W/kg



0 dB = 3.29 W/kg = 5.17 dBW/kg