




TEST REPORT

Report No. : **CHTEW21100209** Report verification: 

Project No..... : **SHT2109071202EW**

FCC ID..... : **2AJZP-A4100**

Applicant's name..... : **Mason America, Inc**

Address..... : **2101 4TH AVE STE 1550 SEATTLE, WA 98121-2316**

Test item description : **Mason Wearable**

Trade Mark : **Mason**

Model/Type reference..... : **A4100**

Listed Model(s) : **-**

Standard : **FCC 47 CFR Part2.1093
IEEE Std C95.1, 1999 Edition
IEEE 1528: 2013**

Date of receipt of test sample..... : **Sep. 29, 2021**

Date of testing..... : **Sep. 30, 2021- Dec. 20, 2021**

Date of issue..... : **Dec. 21, 2021**

Result..... : **PASS**

Compiled by
 (position+printedname+signature)....: File administrators: Silvia Li

Silvia Li

Supervised by
 (position+printedname+signature)....: Test Engineer: Patrick Qiu

Patrick Qiu

Approved by
 (position+printedname+signature)....: Manager: Hans Hu

Hans Hu

Testing Laboratory Name : **Shenzhen Huatongwei International Inspection Co., Ltd**

Address..... : **1/F, Bldg 3, Hongfa Hi-tech Industrial Park, Genuy Road, Tianliao, Gongming, Shenzhen, China**

Shenzhen Huatongwei International Inspection Co., Ltd. All rights reserved.

This publication may be reproduced in whole or in part for non-commercial purposes as long as the Shenzhen Huatongwei International Inspection Co., Ltd is acknowledged as copyright owner and source of the material. Shenzhen Huatongwei International Inspection Co., Ltd takes no responsibility for and will not assume liability for damages resulting from the reader's interpretation of the reproduced material due to its placement and context.

The test report merely correspond to the test sample.

Contents

<u>1.</u>	<u>Statement of Compliance</u>	<u>3</u>
<u>2.</u>	<u>Test Standards and Report version</u>	<u>4</u>
2.1.	Test Standards	4
2.2.	Report version	4
<u>3.</u>	<u>Summary</u>	<u>5</u>
3.1.	Client Information	5
3.2.	Product Description	5
3.3.	RF Specification Description	5
3.4.	Testing Laboratory Information	7
3.5.	Environmental conditions	7
<u>4.</u>	<u>Equipments Used during the Test</u>	<u>8</u>
<u>5.</u>	<u>Measurement Uncertainty</u>	<u>9</u>
<u>6.</u>	<u>SAR Measurements System Configuration</u>	<u>10</u>
6.1.	SAR Measurement Set-up	10
6.2.	DASY5 E-field Probe System	11
6.3.	Phantoms	12
6.4.	Device Holder	12
<u>7.</u>	<u>SAR Test Procedure</u>	<u>13</u>
7.1.	Scanning Procedure	13
7.2.	Data Storage and Evaluation	15
<u>8.</u>	<u>Position of the wireless device in relation to the phantom</u>	<u>17</u>
8.1.	Front-of-face and Limbs	17
<u>9.</u>	<u>Dielectric Property Measurements & System Check</u>	<u>18</u>
9.1.	Tissue Dielectric Parameters	18
9.2.	System Check	19
<u>10.</u>	<u>SAR Exposure Limits</u>	<u>29</u>
<u>11.</u>	<u>Conducted Power Measurement Results</u>	<u>30</u>
11.1.	WCDMA	30
11.2.	LTE	33
11.3.	Wi-Fi	51
11.4.	Bluetooth	54
<u>12.</u>	<u>Maximum Tune-up Limit</u>	<u>55</u>
<u>13.</u>	<u>Antenna Location</u>	<u>66</u>
<u>14.</u>	<u>Measured and Reported SAR Results</u>	<u>67</u>
14.1.	Head SAR	69
14.2.	Extremity SAR	75
<u>15.</u>	<u>SAR Measurement Variability</u>	<u>80</u>
<u>16.</u>	<u>Simultaneous Transmission analysis</u>	<u>81</u>
16.1.	Head	82
16.2.	Body	85
<u>17.</u>	<u>TestSetup Photos</u>	<u>88</u>
<u>18.</u>	<u>External and Internal Photos of the EUT</u>	<u>88</u>

1. Statement of Compliance

Maximum Reported SAR (W/kg)				
RF Exposure Conditions	WWLAN	DTS	U-NII	Simultaneous TX
1g Head(Dist.= 10mm)	1.363	0.018	0.009	1.381
10g Limbs(Dist.= 0mm)	1.807	0.029	0.031	1.838

This device is in compliance with Specific Absorption Rate (SAR) for general population/uncontrolled exposure limits specified in FCC 47 CFR part 2 (2.1093) and ANSI/IEEE C95.1-1992, and had been tested in accordance with the measurement methods and procedures specified in IEEE 1528-2013 and FCC KDB publications.

2 . Test Standards and Report version

2.1. Test Standards

The tests were performed according to following standards:

[FCC 47 Part 2.1093](#): Radiofrequency radiation exposure evaluation: portable devices.

[IEEE Std C95.1, 1999 Edition](#): IEEE Standard for Safety Levels with Respect to Human Exposure to Radio Frequency Electromagnetic Fields, 3 kHz to 300 GHz

[IEEE Std 1528™-2013](#): IEEE Recommended Practice for Determining the Peak Spatial-Average Specific Absorption Rate (SAR) in the Human Head from Wireless Communications Devices: Measurement Techniques.

FCC published RF exposure KDB procedures:

[865664 D01 SAR Measurement 100 MHz to 6 GHz v01r04](#): SAR Measurement Requirements for 100 MHz to 6 GHz

[865664 D02 RF Exposure Reporting v01r02](#): RF Exposure Compliance Reporting and Documentation Considerations

[447498 D01 General RF Exposure Guidance v06](#): Mobile and Portable Device RF Exposure Procedures and Equipment Authorization Policies

[248227 D01 802.11 Wi-Fi SAR v02r02](#): SAR Measurement Procedures for 802.11 a/b/g Transmitters

[941225 D01 3G SAR Procedures v03r01](#): SAR Measurement Procedures for 3G Devices

[941225 D05 SAR for LTE Devices v02r05](#): SAR Evaluation Considerations for LTE Devices

[TCB workshop](#) April, 2019; Page 19, Tissue Simulating Liquids (TSL)

2.2. Report version

Revision No.	Date of issue	Description
N/A	2021-12-21	Original

3. Summary

3.1. Client Information

Applicant:	Mason America, Inc
Address:	2101 4TH AVE STE 1550 SEATTLE, WA 98121-2316
Manufacturer:	Mason America, Inc
Address:	2101 4TH AVE STE 1550 SEATTLE, WA 98121-2316

3.2. Product Description

Main unit	
Name of EUT:	Mason Wearable
Trade Mark:	Mason
Model No.:	A4100
Listed Model(s):	-
Power supply:	DC 3.85V
Device Category:	Portable
Product stage:	Production unit
RF Exposure Environment:	General Population/Uncontrolled
HTW test sample No.:	YPHT21090712001
Hardware version:	2FL010-V1.03
Software version:	A4100_V2.2_20210826
Device Dimension:	Overall (Length x Width x Thickness):50 x 40 x15 mm

3.3. RF Specification Description

WCDMA	
Operation Band:	FDD Band II FDD Band IV FDD Band V
Power Class:	Class 3
Operating Mode:	UMTS Rel. 99 (Voice & Data) HSDPA HSUPA
Antenna Type:	FIFA Antenna
LTE	
Operation Band:	FDD Band 2 FDD Band 4 FDD Band 5 FDD Band 12 FDD Band 13 FDD Band 17 FDD Band 66 FDD Band 71
Power Class:	Class 3
Operating Mode:	QPSK 16QAM
Antenna Type:	FIFA Antenna

Does this device support Carrier Aggregation (CA)? <input type="checkbox"/> Yes <input checked="" type="checkbox"/> No	
Does this device support SV-LTE (1xRTT-LTE)? <input type="checkbox"/> Yes <input checked="" type="checkbox"/> No	
Wi-Fi 2.4G	
Operating Mode:	802.11b 802.11g 802.11n(HT20) 802.11n(HT40)
Antenna Type:	FIFA Antenna
Does this device 2.4GHz Wi-Fi support hotspot operation? <input type="checkbox"/> Yes <input checked="" type="checkbox"/> No	
Wi-Fi 5G	
Operation Band:	U-NII-1 U-NII-2A U-NII-2C U-NII-3
Operating Mode:	802.11a 802.11n(HT20) 802.11n(HT40)
Antenna Type:	FIFA Antenna
Does this device 5GHz Wi-Fi support hotspot operation? <input type="checkbox"/> Yes <input checked="" type="checkbox"/> No	
Bluetooth	
Bluetooth version:	V4.2
Support function:	EDR
Operating Mode:	GFSK $\pi/4$ DQPSK 8DPSK
Antenna Type:	FIFA Antenna
Does this device support Bluetooth Tethering? <input type="checkbox"/> Yes <input checked="" type="checkbox"/> No	
Bluetooth	
Bluetooth version:	V4.2
Support function:	BLE
Operating Mode:	GFSK
Antenna Type:	FIFA Antenna
Does this device support Bluetooth Tethering? <input type="checkbox"/> Yes <input checked="" type="checkbox"/> No	
Remark:	
1. The EUT battery must be fully charged and checked periodically during the test to ascertain uniform power.	

3.4. Testing Laboratory Information

Laboratory Name	Shenzhen Huatongwei International Inspection Co., Ltd.	
Laboratory Location	1/F, Bldg 3, Hongfa Hi-tech Industrial Park, Genyu Road, Tianliao, Gongming, Shenzhen, China	
Connect information:	Tel: 86-755-26715499 E-mail: cs@szhtw.com.cn http://www.szhtw.com.cn	
Qualifications	Type	Accreditation Number
	FCC	762235

3.5. Environmental conditions

During the measurement the environmental conditions were within the listed ranges:

Ambient temperature	18 °C to 25 °C
Ambient humidity	30%RH to 70%RH
Air Pressure	950-1050mbar

4. Equipments Used during the Test

Used	Test Equipment	Manufacturer	Model No.	Serial No.	Cal. date (YY-MM-DD)	Due date (YY-MM-DD)
●	Data Acquisition Electronics DAEx	SPEAG	DAE4	1549	2021/03/23	2022/03/22
●	E-field Probe	SPEAG	EX3DV4	7494	2021/04/09	2022/04/08
●	Universal Radio Communication Tester	R&S	CMW500	137681	2021/05/27	2022/05/26
● Tissue-equivalent liquids Validation						
●	Dielectric Assessment Kit	SPEAG	DAK-3.5	1267	N/A	N/A
○	Dielectric Assessment Kit	SPEAG	DAK-12	1130	N/A	N/A
●	Network analyzer	Keysight	E5071C	MY46733048	2021/9/17	2022/9/16
● System Validation						
○	System Validation Antenna	SPEAG	CLA-150	4024	2021/01/25	2024/01/24
○	System Validation Dipole	SPEAG	D450V3	1102	2021/01/20	2024/01/19
●	System Validation Dipole	SPEAG	D750V3	1180	2021/01/22	2024/01/21
●	System Validation Dipole	SPEAG	D835V2	4d238	2021/01/22	2024/01/21
●	System Validation Dipole	SPEAG	D1750V2	1164	2021/01/22	2024/01/21
●	System Validation Dipole	SPEAG	D1900V2	5d226	2021/01/22	2024/01/21
●	System Validation Dipole	SPEAG	D2450V2	1009	2021/01/25	2024/01/24
○	System Validation Dipole	SPEAG	D2600V2	1150	2021/01/25	2024/01/24
●	System Validation Dipole	SPEAG	D5GHzV2	1273	2021/01/26	2024/01/25
●	Signal Generator	R&S	SMB100A	114360	2021/08/05	2022/08/04
●	Power Viewer for Windows	R&S	N/A	N/A	N/A	N/A
●	Power sensor	R&S	NRP18A	101010	2021/08/05	2022/08/04
●	Power sensor	R&S	NRP18A	101386	2021/05/27	2022/05/26
●	Power Amplifier	BONN	BLWA 0160-2M	1811887	2020/11/12	2021/11/11
●	Dual Directional Coupler	Mini-Circuits	ZHDC-10-62-S+	F975001814	2020/11/12	2021/11/11
●	Attenuator	Mini-Circuits	VAT-3W2+	1819	2020/11/12	2021/11/11
●	Attenuator	Mini-Circuits	VAT-10W2+	1741	2020/11/12	2021/11/11

Note:

1. The Probe, Dipole and DAE calibration reference to the Appendix B and C.
2. Referring to KDB865664 D01, the dipole calibration interval can be extended to 3 years with justification. The dipole are also not physically damaged or repaired during the interval.

5. Measurement Uncertainty

Per KDB 865664 D01 SAR Measurement 100 MHz to 6 GHz, when the highest measured 1-g SAR within a frequency band is < 1.5 W/kg and the measured 10-g SAR within a frequency band is < 3.75 W/kg. The expanded SAR measurement uncertainty must be $\leq 30\%$, for a confidence interval of $k = 2$. If these conditions are met, extensive SAR measurement uncertainty analysis described in IEEE Std 1528-2013 is not required in SAR reports submitted for equipment approval.

Therefore, the measurement uncertainty is not required.

6. SAR Measurements System Configuration

6.1. SAR Measurement Set-up

The DASY5 system for performing compliance tests consists of the following items:

A standard high precision 6-axis robot (Stäubli RX family) with controller and software. An arm extension for accommodating the data acquisition electronics (DAE).

A dosimetric probe, i.e. an isotropic E-field probe optimized and calibrated for usage in tissue simulating liquid. The probe is equipped with an optical surface detector system.

A data acquisition electronic (DAE) which performs the signal amplification, signal multiplexing, AD-conversion, offset measurements, mechanical surface detection, collision detection, etc. The unit is battery powered with standard or rechargeable batteries. The signal is optically transmitted to the EOC.

A unit to operate the optical surface detector which is connected to the EOC.

The Electro-Optical Coupler (EOC) performs the conversion from the optical into a digital electric signal of the DAE. The EOC is connected to the DASY5 measurement server.

The DASY5 measurement server, which performs all real-time data evaluation for field measurements and surface detection, controls robot movements and handles safety operation. A computer operating Windows 2003.

DASY5 software and SEMCAD data evaluation software.

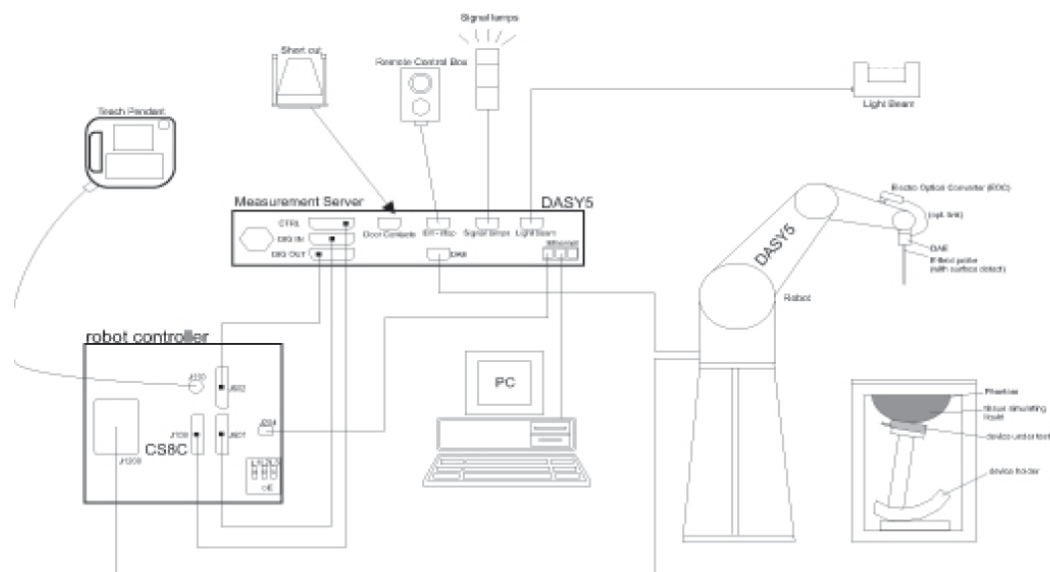
Remote control with teach panel and additional circuitry for robot safety such as warning lamps, etc.

The generic twin phantom enabling the testing of left-hand and right-hand usage.

The device holder for handheld Mobile Phones.

Tissue simulating liquid mixed according to the given recipes.

System validation dipoles allowing to validate the proper functioning of the system.



6.2. DASY5 E-field Probe System

The SAR measurements were conducted with the dosimetric probe EX3DV4 (manufactured by SPEAG), designed in the classical triangular configuration and optimized for dosimetric evaluation.

● Probe Specification

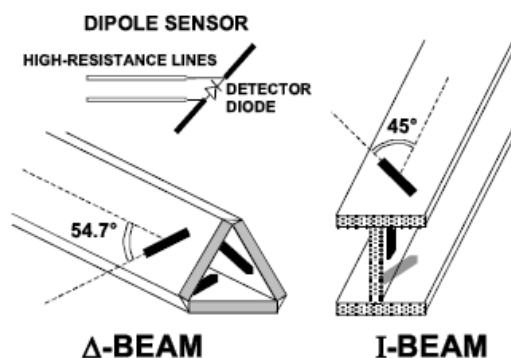
Construction	Symmetrical design with triangular core Interleaved sensors Built-in shielding against static charges PEEK enclosure material (resistant to organic solvents, e.g., DGBE)
Calibration	ISO/IEC 17025 calibration service available.
Frequency	4 MHz to 10 GHz; Linearity: ± 0.2 dB (30 MHz to 6 GHz)
Directivity	± 0.3 dB in HSL (rotation around probe axis) ± 0.5 dB in tissue material (rotation normal to probe axis)
Dynamic Range	10 μ W/g to > 100 W/kg; Linearity: ± 0.2 dB
Dimensions	Overall length: 337 mm (Tip: 20 mm) Tip diameter: 2.5 mm (Body: 12 mm) Distance from probe tip to dipole centers: 1.0 mm
Application	General dosimetry up to 6 GHz Dosimetry in strong gradient fields Compliance tests of Mobile Phones
Compatibility	DASY3, DASY4, DASY52 SAR and higher, EASY4/MRI



◆ Isotropic E-Field Probe

The isotropic E-Field probe has been fully calibrated and assessed for isotropicity, and boundary effect within a controlled environment. Depending on the frequency for which the probe is calibrated the method utilized for calibration will change.

The E-Field probe utilizes a triangular sensor arrangement as detailed in the diagram below:



6.3. Phantoms

The phantom used for all tests i.e. for both system checks and device testing, was the twin-headed "SAM Phantom", manufactured by SPEAG. The SAM twin phantom is a fiberglass shell phantom with 2mm shell thickness (except the ear region, where shell thickness increases to 6mm).

System checking was performed using the flat section, whilst Head SAR tests used the left and right head profile sections. Body SAR testing also used the flat section between the head profiles.



SAM-Twin Phantom

6.4. Device Holder

The device was placed in the device holder (illustrated below) that is supplied by SPEAG as an integral part of the DASY system.

The DASY device holder is designed to cope with the different positions given in the standard. It has two scales for device rotation (with respect to the body axis) and device inclination (with respect to the line between the ear reference points). The rotation centers for both scales is the ear reference point (ERP). Thus the device needs no repositioning when changing the angles.



Device holder supplied by SPEAG

7. SAR Test Procedure

7.1. Scanning Procedure

Step 1: Power Reference Measurement

The Power Reference Measurement and Power Drift Measurements are for monitoring the power drift of the device under test in the batch process. Measure the local SAR at a test point within 8 mm of the phantom inner surface that is closest to the DUT. This distance cannot be smaller than the distance of sensor calibration points to probe tip as defined in the probe properties.

Step 2: Area Scan

The Area Scan is used as a fast scan in two dimensions to find the area of high field values, before doing a fine measurement around the hot spot. The sophisticated interpolation routines implemented in DASY software can find the maximum locations even in relatively coarse grids. When an Area Scan has measured all reachable points, it computes the field maximal found in the scanned area, within a range of the global maximum. The range (in dB) is specified in the standards for compliance testing. For example, a 2 dB range is required in IEEE Standard 1528 and IEC 62209 standards, whereby 3 dB is a requirement when compliance is assessed in accordance with the ARIB standard (Japan). If only one Zoom Scan follows the Area Scan, then only the absolute maximum will be taken as reference. For cases where multiple maximums are detected, the number of Zoom Scans has to be increased accordingly.

Area Scan Resolutions per FCC KDB Publication 865664 D01v04

	≤ 3 GHz	> 3 GHz
Maximum distance from closest measurement point (geometric center of probe sensors) to phantom surface	5 mm ± 1 mm	$\frac{1}{2} \cdot \delta \cdot \ln(2)$ mm ± 0.5 mm
Maximum probe angle from probe axis to phantom surface normal at the measurement location	30° ± 1°	20° ± 1°
Maximum area scan spatial resolution: Δx_{Area} , Δy_{Area}	≤ 2 GHz: ≤ 15 mm 2 – 3 GHz: ≤ 12 mm	3 – 4 GHz: ≤ 12 mm 4 – 6 GHz: ≤ 10 mm
	When the x or y dimension of the test device, in the measurement plane orientation, is smaller than the above, the measurement resolution must be ≤ the corresponding x or y dimension of the test device with at least one measurement point on the test device.	

Step 3: Zoom Scan

Zoom Scans are used to assess the peak spatial SAR values within a cubic averaging volume containing 1g and 10g of simulated tissue. The Zoom Scan measures points (refer to table below) within a cube whose base faces are centered on the maxima found in a preceding area scan job within the same procedure. When the measurement is done, the Zoom Scan evaluates the averaged SAR for 1 g and 10 g and displays these values next to the job's label.

Zoom Scan Resolutions per FCC KDB Publication 865664 D01v04

Maximum zoom scan spatial resolution: Δx_{Zoom} , Δy_{Zoom}		≤ 2 GHz: ≤ 8 mm 2 – 3 GHz: ≤ 5 mm*	3 – 4 GHz: ≤ 5 mm* 4 – 6 GHz: ≤ 4 mm*	
Maximum zoom scan spatial resolution, normal to phantom surface	uniform grid: $\Delta z_{Zoom}(n)$	≤ 5 mm	3 – 4 GHz: ≤ 4 mm 4 – 5 GHz: ≤ 3 mm 5 – 6 GHz: ≤ 2 mm	
	graded grid	$\Delta z_{Zoom}(1)$: between 1 st two points closest to phantom surface	≤ 4 mm	3 – 4 GHz: ≤ 3 mm 4 – 5 GHz: ≤ 2.5 mm 5 – 6 GHz: ≤ 2 mm
		$\Delta z_{Zoom}(n>1)$: between subsequent points	$\leq 1.5 \cdot \Delta z_{Zoom}(n-1)$ mm	
Minimum zoom scan volume	x, y, z	≥ 30 mm	3 – 4 GHz: ≥ 28 mm 4 – 5 GHz: ≥ 25 mm 5 – 6 GHz: ≥ 22 mm	
<p>Note: δ is the penetration depth of a plane-wave at normal incidence to the tissue medium; see IEEE Std 1528-2013 for details.</p> <p>* When zoom scan is required and the <i>reported</i> SAR from the <i>area scan based 1-g SAR estimation</i> procedures of KDB Publication 447498 is ≤ 1.4 W/kg, ≤ 8 mm, ≤ 7 mm and ≤ 5 mm zoom scan resolution may be applied, respectively, for 2 GHz to 3 GHz, 3 GHz to 4 GHz and 4 GHz to 6 GHz.</p>				

Step 4: Power drift measurement

The Power Drift Measurement measures the field at the same location as the most recent power reference measurement within the same procedure, and with the same settings. The Power Drift Measurement gives the field difference in dB from the reading conducted within the last Power Reference Measurement. This allows a user to monitor the power drift of the device under test within a batch process. The measurement procedure is the same as Step 1. The SAR drift shall be kept within $\pm 5\%$.

7.2. Data Storage and Evaluation

Data Storage

The DASY5 software stores the acquired data from the data acquisition electronics as raw data (in microvolt readings from the probe sensors),s together with all necessary software parameters for the data evaluation (probe calibration data, liquid parameters and device frequency and modulation data) in measurement files with the extension “.DA4”. The software evaluates the desired unit and format for output each time the data is visualized or exported. This allows verification of the complete software setup even after the measurement and allows correction of incorrect parameter settings. For example, if a measurement has been performed with a wrong crest factor parameter in the device setup, the parameter can be corrected afterwards and the data can be re-evaluated.

The measured data can be visualized or exported in different units or formats, depending on the selected probe type ([V/m], [A/m], [°C], [W/kg], [mW/cm²], [dBrel], etc.). Some of these units are not available in certain situations or show meaningless results, e.g., a SAR output in a lossless media will always be zero. Raw data can also be exported to perform the evaluation with other software packages.

Data Evaluation

The SEMCAD software automatically executes the following procedures to calculate the field units from the microvolt readings at the probe connector. The parameters used in the evaluation are stored in the configuration modules of the software:

Probe parameters:	Sensitivity:	Normi, ai0, ai1, ai2
	Conversion factor:	ConvFi
	Diode compression point:	Dcpi
Device parameters:	Frequency:	f
	Crest factor:	cf
Media parameters:	Conductivity:	σ
	Density:	ρ

These parameters must be set correctly in the software. They can be found in the component documents or they can be imported into the software from the configuration files issued for the DASY5 components. In the direct measuring mode of the multimeter option, the parameters of the actual system setup are used. In the scan visualization and export modes, the parameters stored in the corresponding document files are used.

The first step of the evaluation is a linearization of the filtered input signal to account for the compression characteristics of the detector diode. The compensation depends on the input signal, the diode type and the DC-transmission factor from the diode to the evaluation electronics. If the exciting field is pulsed, the crest factor of the signal must be known to correctly compensate for peak power. The formula for each channel can be given as:

$$V_i = U_i + U_i^2 \cdot \frac{cf}{dcp_i}$$

Vi:	compensated signal of channel (i = x, y, z)
Ui:	input signal of channel (i = x, y, z)
cf:	crest factor of exciting field (DASY parameter)
dcp _i :	diode compression point (DASY parameter)

From the compensated input signals the primary field data for each channel can be evaluated:

$$E - \text{fieldprobes} : \quad E_i = \sqrt{\frac{V_i}{Norm_i \cdot ConvF}}$$

$$H - \text{fieldprobes} : \quad H_i = \sqrt{V_i} \cdot \frac{a_{i0} + a_{i1}f + a_{i2}f^2}{f}$$

Vi:	compensated signal of channel (i = x, y, z)
Norm _i :	sensor sensitivity of channel (i = x, y, z), [mV/(V/m) ²] for E-field Probes
ConvF:	sensitivity enhancement in solution
a _{ij} :	sensor sensitivity factors for H-field probes
f:	carrier frequency [GHz]
E _i :	electric field strength of channel i in V/m
H _i :	magnetic field strength of channel i in A/m

The RSS value of the field components gives the total field strength (Hermitian magnitude):

$$E_{tot} = \sqrt{E_x^2 + E_y^2 + E_z^2}$$

The primary field data are used to calculate the derived field units.

$$SAR = E_{tot}^2 \cdot \frac{\sigma}{\rho \cdot 1'000}$$

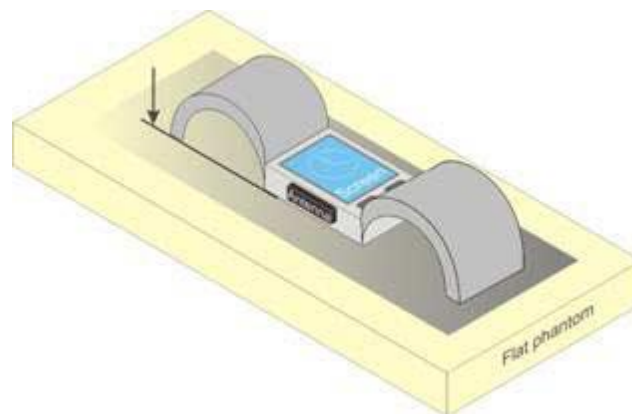
SAR: local specific absorption rate in W/kg
Etot: total field strength in V/m
 σ : conductivity in [mho/m] or [Siemens/m]
 ρ : equivalent tissue density in g/cm³

Note that the density is normally set to 1 (or 1.06), to account for actual brain density rather than the density of the simulation liquid.

8. Position of the wireless device in relation to the phantom

8.1. Front-of-face and Limbs

Transmitters that are built-in within a wrist watch or similar wrist-worn devices typically operate in speaker mode for voice communication, with the device worn on the wrist and positioned next to the mouth. Next to the mouth exposure requires 1-g SAR and the wrist-worn condition requires 10-g extremity SAR. The 10-g extremity and 1-g SAR test exclusions may be applied to the wrist and face exposure conditions. When SAR evaluation is required, next to the mouth use is evaluated with the front of the device positioned at 10 mm from a flat phantom filled with head tissue-equivalent medium. The wrist bands should be strapped together to represent normal use conditions. SAR for wrist exposure is evaluated with the back of the device positioned in direct contact against a flat phantom filled with body tissue-equivalent medium. The wrist bands should be unstrapped and touching the phantom.



9. Dielectric Property Measurements & System Check

9.1. Tissue Dielectric Parameters

The temperature of the tissue-equivalent medium used during measurement must also be within 18°C to 25°C and within $\pm 2^\circ\text{C}$ of the temperature when the tissue parameters are characterized.

The dielectric parameters must be measured before the tissue-equivalent medium is used in a series of SAR measurements. The parameters should be re-measured after each 3-4 days of use; or earlier if the dielectric parameters can become out of tolerance; for example, when the parameters are marginal at the beginning of the measurement series.

The dielectric constant (ϵ_r) and conductivity (σ) of typical tissue-equivalent media recipes are expected to be within $\pm 5\%$ of the required target values; but for SAR measurement systems that have implemented the SAR error compensation algorithms documented in IEEE Std 1528-2013, to automatically compensate the measured SAR results for deviations between the measured and required tissue dielectric parameters, the tolerance for ϵ_r and σ may be relaxed to $\pm 10\%$. This is limited to frequencies ≤ 3 GHz.

Tissue Dielectric Parameters

FCC KDB 865664 D01 SAR Measurement 100 MHz to 6 GHz

Tissue dielectric parameters for Head and Body				
Target Frequency (MHz)	Head		Body	
	ϵ_r	$\sigma(\text{S/m})$	ϵ_r	$\sigma(\text{S/m})$
750	41.9	0.89	55.5	0.96
835	41.5	0.90	55.2	0.97
1750	40.1	1.37	53.4	1.49
1800-2000	40.0	1.40	53.3	1.52
2450	39.2	1.80	52.7	1.95
5200	36.0	4.66	49.0	5.30
5300	35.9	4.76	48.9	5.42
5500	35.6	4.96	48.6	5.65
5600	35.5	5.07	48.5	5.77
5800	35.3	5.27	48.2	6.00

IEEE Std 1528-2013

Refer to Table 3 within the IEEE Std 1528-2013

Dielectric Property Measurements Results:

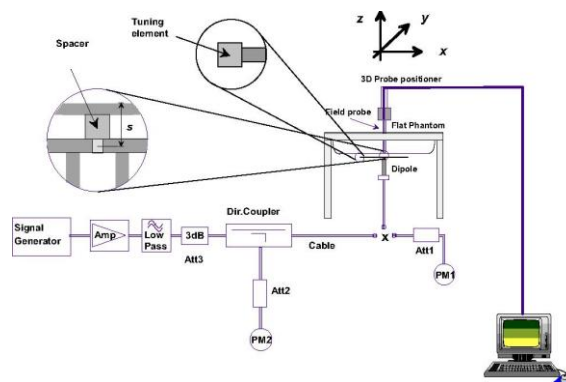
Dielectric performance of Head tissue simulating liquid									
Frequency (MHz)	ϵ_r		$\sigma(\text{S/m})$		Delta (ϵ_r)	Delta (σ)	Limit	Temp ($^\circ\text{C}$)	Date
	Target	Measured	Target	Measured					
750	41.90	42.19	0.890	0.928	0.69%	4.28%	$\pm 5\%$	22.0	2021/10/18
835	41.50	42.01	0.900	0.939	1.23%	4.33%	$\pm 5\%$	22.0	2021/10/19
1750	40.10	41.43	1.370	1.404	3.32%	2.48%	$\pm 5\%$	22.0	2021/10/20
1900	40.00	41.16	1.400	1.452	2.90%	3.71%	$\pm 5\%$	22.0	2021/10/21
2450	39.20	40.69	1.800	1.753	3.80%	-2.61%	$\pm 5\%$	22.0	2021/10/22
5250	35.93	35.00	4.706	4.760	-2.59%	1.15%	$\pm 5\%$	22.0	2021/12/16
5600	35.53	34.65	5.065	5.248	-2.49%	3.61%	$\pm 5\%$	22.0	2021/12/17
5750	35.36	35.02	5.219	5.251	-0.96%	0.61%	$\pm 5\%$	22.0	2021/12/17

9.2. System Check

SAR system verification is required to confirm measurement accuracy, according to the tissue dielectric media, probe calibration points and other system operating parameters required for measuring the SAR of a test device. The system verification must be performed for each frequency band and within the valid range of each probe calibration point required for testing the device. The same SAR probe(s) and tissue-equivalent media combinations used with each specific SAR system for system verification must be used for device testing. When multiple probe calibration points are required to cover substantially large transmission bands, independent system verifications are required for each probe calibration point. A system verification must be performed before each series of SAR measurements using the same probe calibration point and tissue-equivalent medium. Additional system verification should be considered according to the conditions of the tissue-equivalent medium and measured tissue dielectric parameters, typically every three to four days when the liquid parameters are re-measured or sooner when marginal liquid parameters are used at the beginning of a series of measurements.

System Performance Check Measurement Conditions:

- ◆ The measurements were performed in the flat section of the TWIN SAM or ELI phantom, shell thickness: 2.0 ± 0.2 mm (bottom plate) filled with Body or Head simulating liquid of the following parameters.
- ◆ The depth of tissue-equivalent liquid in a phantom must be ≥ 15.0 cm for SAR measurements ≤ 3 GHz and ≥ 10.0 cm for measurements > 3 GHz.
- ◆ The DASY system with an E-Field Probe was used for the measurements.
- ◆ The dipole was mounted on the small tripod so that the dipole feed point was positioned below the center marking of the flat phantom section and the dipole was oriented parallel to the body axis (the long side of the phantom). The standard measuring distance was 10 mm (above 1 GHz) and 15 mm (below 1 GHz) from dipole center to the simulating liquid surface.
- ◆ The coarse grid with a grid spacing of 15 mm was aligned with the dipole.
- ◆ For 5 GHz band - The coarse grid with a grid spacing of 10 mm was aligned with the dipole.
- ◆ Special 7x7x7 (below 3 GHz) and/or 8x8x7 (above 3 GHz) fine cube was chosen for the cube.
- ◆ The results are normalized to 1 W input power.



System Performance Check Setup

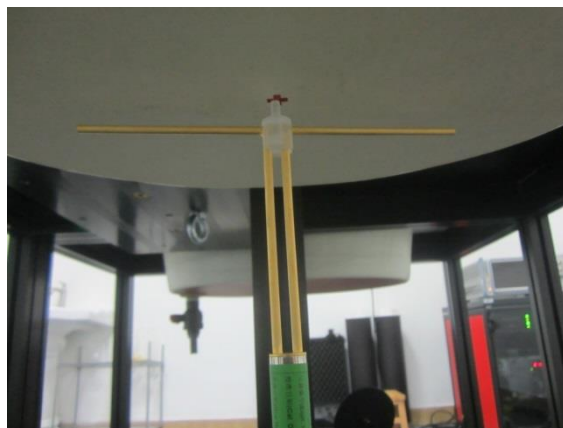


Photo of Dipole Setup

System Check Result:

The 1-g and 10-g SAR measured with a reference dipole, using the required tissue-equivalent medium at the test frequency, must be within $\pm 10\%$ of the manufacturer calibrated dipole SAR target.

Head											
Frequency (MHz)	1g SAR			10g SAR			Delta (1g)	Delta (10g)	Limit	Temp (°C)	Date
	Target 1W	Normalize to 1W	Measured 250mW	Target 1W	Normalize to 1W	Measured 250mW					
750	8.43	8.44	2.11	5.59	5.60	1.40	0.12%	0.18%	$\pm 10\%$	22.4	2021/10/18
835	9.39	9.76	2.44	6.14	6.44	1.61	3.94%	4.89%	$\pm 10\%$	22.4	2021/10/19
1750	36.40	35.24	8.81	19.20	19.24	4.81	-3.19%	0.21%	$\pm 10\%$	22.4	2021/10/20
1900	39.80	39.72	9.93	20.30	21.08	5.27	-0.20%	3.84%	$\pm 10\%$	22.4	2021/10/21
2450	52.00	50.40	12.60	23.90	23.72	5.93	-3.08%	-0.75%	$\pm 10\%$	22.4	2021/10/22
5250	78.20	81.00	8.10	22.30	23.40	2.34	3.58%	4.93%	$\pm 10\%$	22.4	2021/12/16
5600	81.60	87.90	8.79	23.30	25.40	2.54	7.72%	9.01%	$\pm 10\%$	22.4	2021/12/17
5750	79.30	84.70	8.47	22.50	24.10	2.41	6.81%	7.11%	$\pm 10\%$	22.4	2021/12/17

Plots of System Performance Check

System Performance Check-Head 750MHz

DUT: D750V3; Type: D750V3; Serial: 1180

Date: 2021-10-18

Communication System: UID 0, A-CW (0); Frequency: 750 MHz; Duty Cycle: 1:1

Medium parameters used: $f = 750$ MHz; $\sigma = 0.933$ S/m; $\epsilon_r = 40.603$; $\rho = 1000$ kg/m³

Phantom section: Flat Section

Ambient Temperature: 22.6°C; Liquid Temperature: 22.4°C;

DASY Configuration:

- Probe: EX3DV4 - SN7494; ConvF(10.7, 10.7, 10.7) @ 750 MHz; Calibrated: 4/9/2021
- Sensor-Surface: 3mm (Mechanical Surface Detection)
- Electronics: DAE4 Sn1549; Calibrated: 3/23/2021
- Phantom: Twin-SAM V8.0 ; Type: QD 000 P41 AA; Serial: 1974
- DASY52 52.10.2(1495); SEMCAD X 14.6.12(7450)

Head/d=15mm, Pin=250mW, dist=1.4mm/Area Scan (51x121x1): Interpolated grid:

$dx=1.500$ mm, $dy=1.500$ mm

Maximum value of SAR (interpolated) = 2.44 W/kg

Head/d=15mm, Pin=250mW, dist=1.4mm/Zoom Scan (5x5x7)/Cube 0:

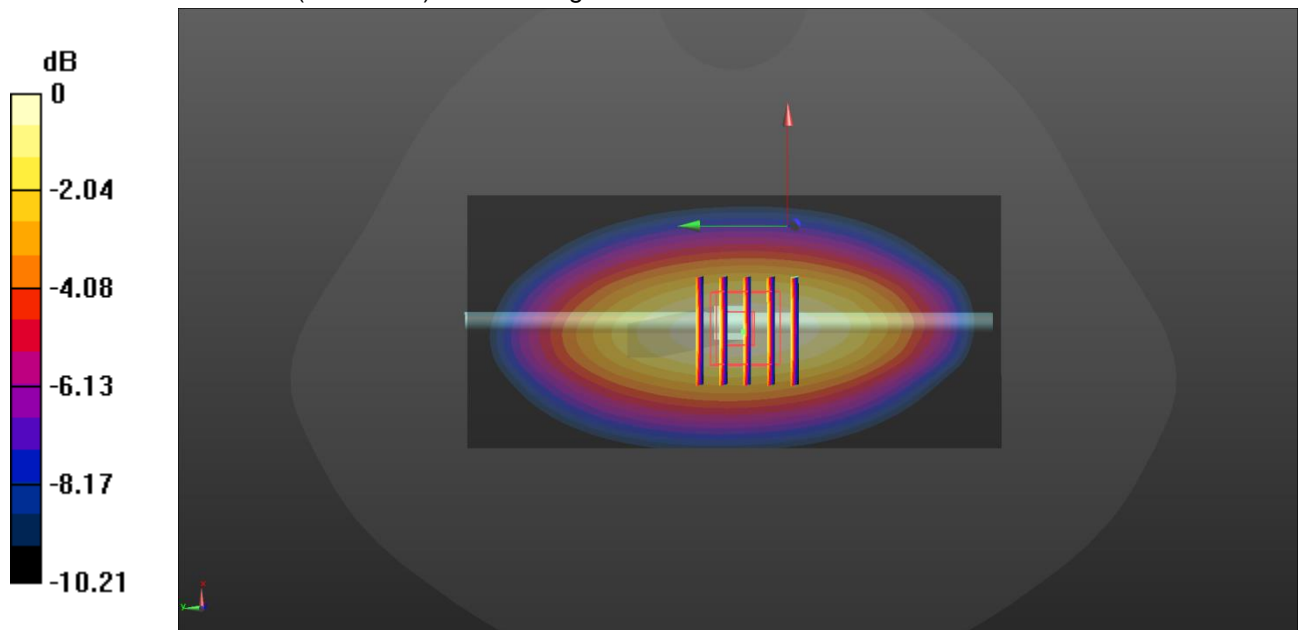
Measurement grid: $dx=8$ mm, $dy=8$ mm, $dz=5$ mm

Reference Value = 51.25 V/m; Power Drift = 0.00 dB

Peak SAR (extrapolated) = 3.14 W/kg

SAR(1 g) = 2.11 W/kg; SAR(10 g) = 1.4 W/kg

Maximum value of SAR (measured) = 2.45 W/kg



System Performance Check-Head 835MHz

DUT: D835V2; Type: D835V2; Serial: 4d238

Date: 2021-10-19

Communication System: UID 0, CW (0); Frequency: 835 MHz; Duty Cycle: 1:1

Medium parameters used: $f = 835$ MHz; $\sigma = 0.94$ S/m; $\epsilon_r = 40.245$; $\rho = 1000$ kg/m³

Phantom section: Flat Section

Ambient Temperature: 22.6°C; Liquid Temperature: 22.4°C;

DASY Configuration:

- Probe: EX3DV4 - SN7494; ConvF(10.41, 10.41, 10.41) @ 835 MHz; Calibrated: 4/9/2021
- Sensor-Surface: 3mm (Mechanical Surface Detection)
- Electronics: DAE4 Sn1549; Calibrated: 3/23/2021
- Phantom: Twin-SAM V8.0 ; Type: QD 000 P41 AA; Serial: 1974
- DASY52 52.10.2(1495); SEMCAD X 14.6.12(7450)

Head/d=15mm, Pin=250mW/Area Scan (41x101x1): Interpolated grid: dx=1.500 mm, dy=1.500 mm

Maximum value of SAR (interpolated) = 2.83 W/kg

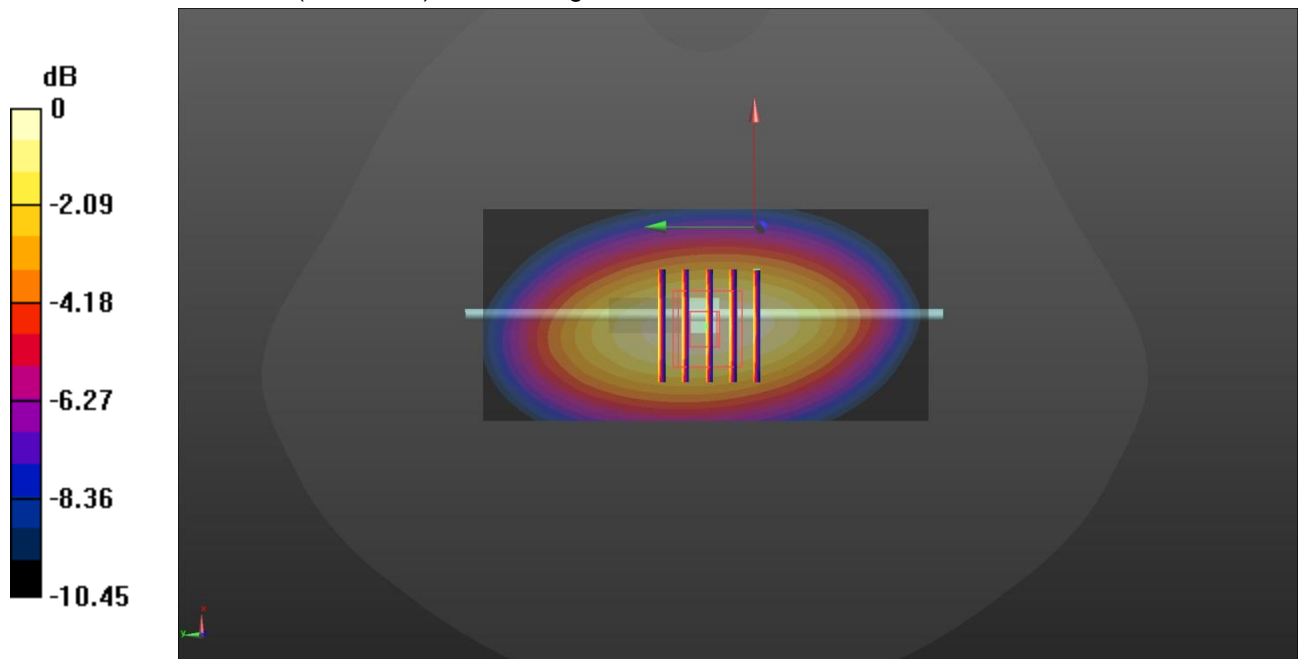
Head/d=15mm, Pin=250mW/Zoom Scan (5x5x7)/Cube 0: Measurement grid: dx=8mm, dy=8mm, dz=5mm

Reference Value = 54.15 V/m; Power Drift = -0.01 dB

Peak SAR (extrapolated) = 3.58 W/kg

SAR(1 g) = 2.44 W/kg; SAR(10 g) = 1.61 W/kg

Maximum value of SAR (measured) = 2.84 W/kg



0 dB = 2.84 W/kg = 4.53 dBW/kg

System Performance Check-Head 1750MHz

DUT: D1750V2; Type: D1750V2; Serial: 1164

Date: 2021-10-20

Communication System: UID 0, CW (0); Frequency: 1750 MHz; Duty Cycle: 1:1

Medium parameters used: $f = 1750$ MHz; $\sigma = 1.401$ S/m; $\epsilon_r = 38.855$; $\rho = 1000$ kg/m³

Phantom section: Flat Section

Ambient Temperature: 22.6°C; Liquid Temperature: 22.4°C;

DASY Configuration:

- Probe: EX3DV4 - SN7494; ConvF(8.88, 8.88, 8.88) @ 1750 MHz; Calibrated: 4/9/2021
- Sensor-Surface: 3mm (Mechanical Surface Detection)
- Electronics: DAE4 Sn1549; Calibrated: 3/23/2021
- Phantom: Twin-SAM V8.0 ; Type: QD 000 P41 AA; Serial: 1974
- DASY52 52.10.2(1495); SEMCAD X 14.6.12(7450)

Head/d=10mm, Pin=250mW/Area Scan (41x61x1): Interpolated grid: dx=1.500 mm, dy=1.500 mm

Maximum value of SAR (interpolated) = 11.5 W/kg

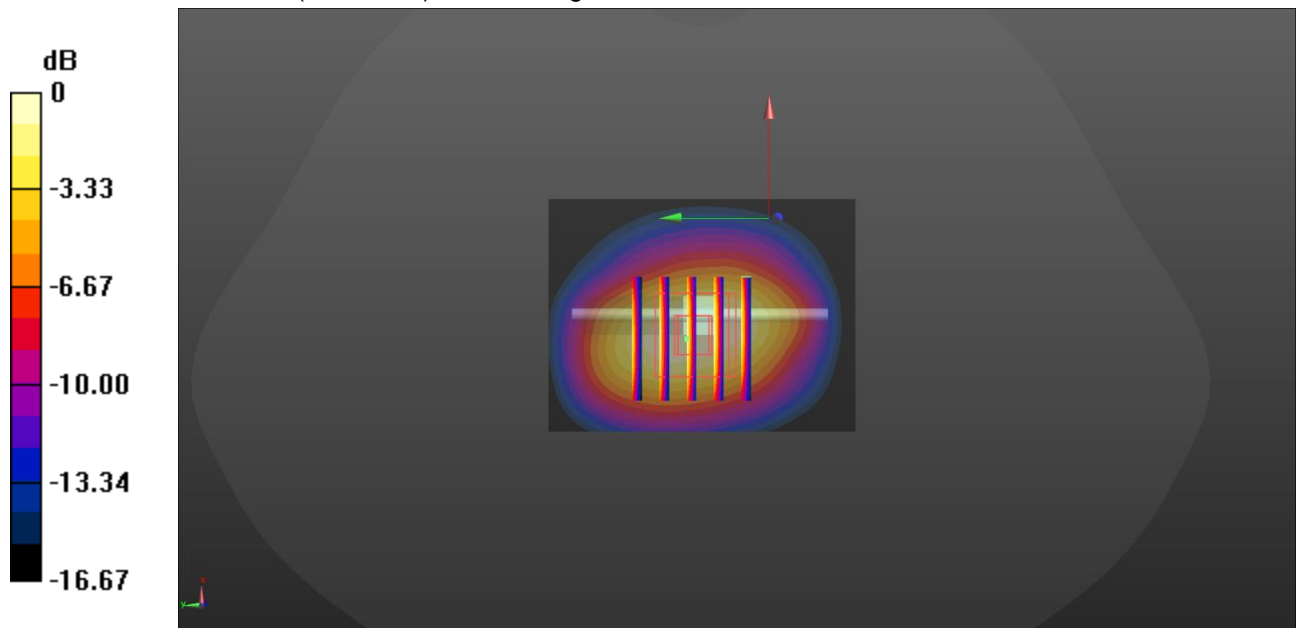
Head/d=10mm, Pin=250mW/Zoom Scan (5x5x7)/Cube 0: Measurement grid: dx=8mm, dy=8mm, dz=5mm

Reference Value = 83.22 V/m; Power Drift = 0.05 dB

Peak SAR (extrapolated) = 15.1 W/kg

SAR(1 g) = 8.81 W/kg; SAR(10 g) = 4.81 W/kg

Maximum value of SAR (measured) = 10.9 W/kg



0 dB = 10.9 W/kg = 10.37 dBW/kg

System Performance Check-Head 1900MHz

DUT: D1900V2; Type: D1900V2; Serial: 5d226

Date: 2021-10-21

Communication System: UID 0, CW (0); Frequency: 1900 MHz; Duty Cycle: 1:1

Medium parameters used: $f = 1900$ MHz; $\sigma = 1.469$ S/m; $\epsilon_r = 38.459$; $\rho = 1000$ kg/m³

Phantom section: Flat Section

Ambient Temperature: 22.6°C; Liquid Temperature: 22.4°C;

DASY Configuration:

- Probe: EX3DV4 - SN7494; ConvF(8.55, 8.55, 8.55) @ 1900 MHz; Calibrated: 4/9/2021
- Sensor-Surface: 3mm (Mechanical Surface Detection)
- Electronics: DAE4 Sn1549; Calibrated: 3/23/2021
- Phantom: Twin-SAM V8.0 ; Type: QD 000 P41 AA; Serial: 1974
- DASY52 52.10.2(1495); SEMCAD X 14.6.12(7450)

Head/d=10mm, Pin=250mW/Area Scan (41x61x1): Interpolated grid: dx=1.500 mm, dy=1.500 mm

Maximum value of SAR (interpolated) = 13.2 W/kg

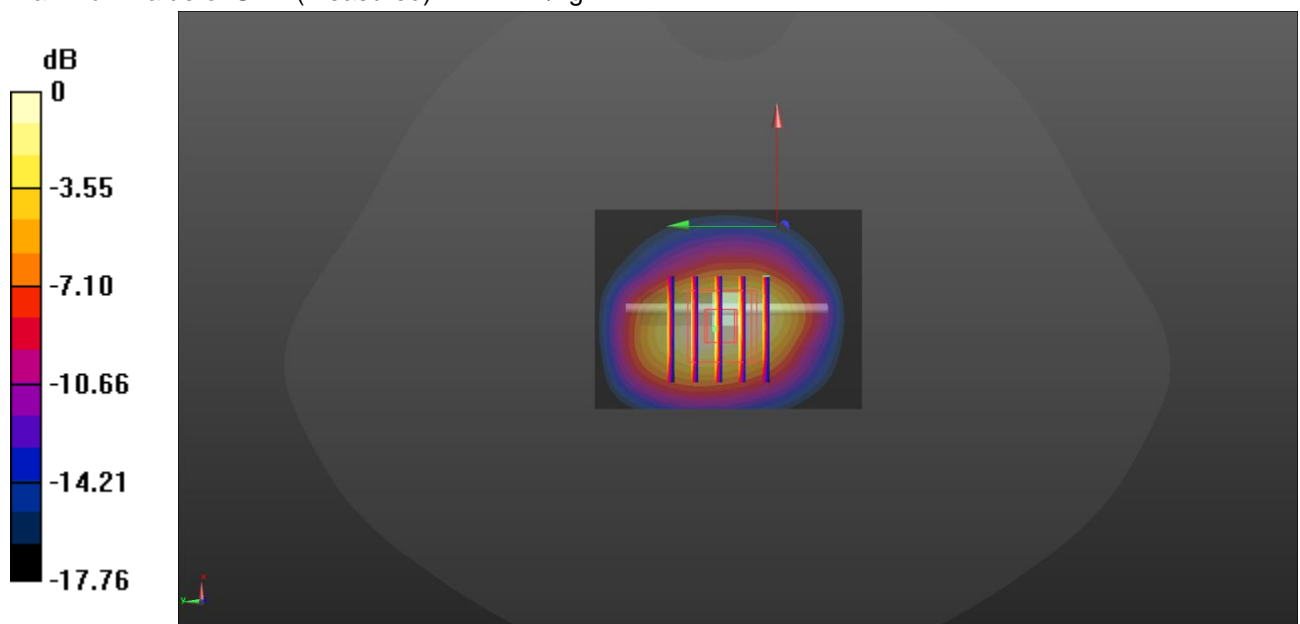
Head/d=10mm, Pin=250mW/Zoom Scan (5x5x7)/Cube 0: Measurement grid: dx=8mm, dy=8mm, dz=5mm

Reference Value = 86.80 V/m; Power Drift = 0.03 dB

Peak SAR (extrapolated) = 17.5 W/kg

SAR(1 g) = 9.93 W/kg; SAR(10 g) = 5.27 W/kg

Maximum value of SAR (measured) = 12.4 W/kg



0 dB = 12.4 W/kg = 10.93 dBW/kg

SystemPerformanceCheck-Head 2450MHz

DUT: D2450V2; Type: D2450V2; Serial: 1009

Date: 2021-10-22

Communication System: UID 0, CW (0); Frequency: 2450 MHz;Duty Cycle: 1:1

Medium parameters used (interpolated): $f = 2450$ MHz; $\sigma = 1.838$ S/m; $\epsilon_r = 39.096$; $\rho = 1000$ kg/m³

Phantom section: Flat Section

Ambient Temperature:22.6°C;Liquid Temperature:22.4°C;

DASY Configuration:

- Probe: EX3DV4 - SN7494; ConvF(7.97, 7.97, 7.97) @ 2450 MHz; Calibrated: 4/9/2021
- Sensor-Surface: 3mm (Mechanical Surface Detection)
- Electronics: DAE4 Sn1549; Calibrated: 3/23/2021
- Phantom: Twin-SAM V8.0 ; Type: QD 000 P41 AA; Serial: 1974
- DASY52 52.10.2(1495); SEMCAD X 14.6.12(7450)

Head/d=10mm,Pin=250mW/Area Scan (41x61x1): Interpolated grid: dx=1.200 mm, dy=1.200 mm

Maximum value of SAR (interpolated) = 18.8 W/kg

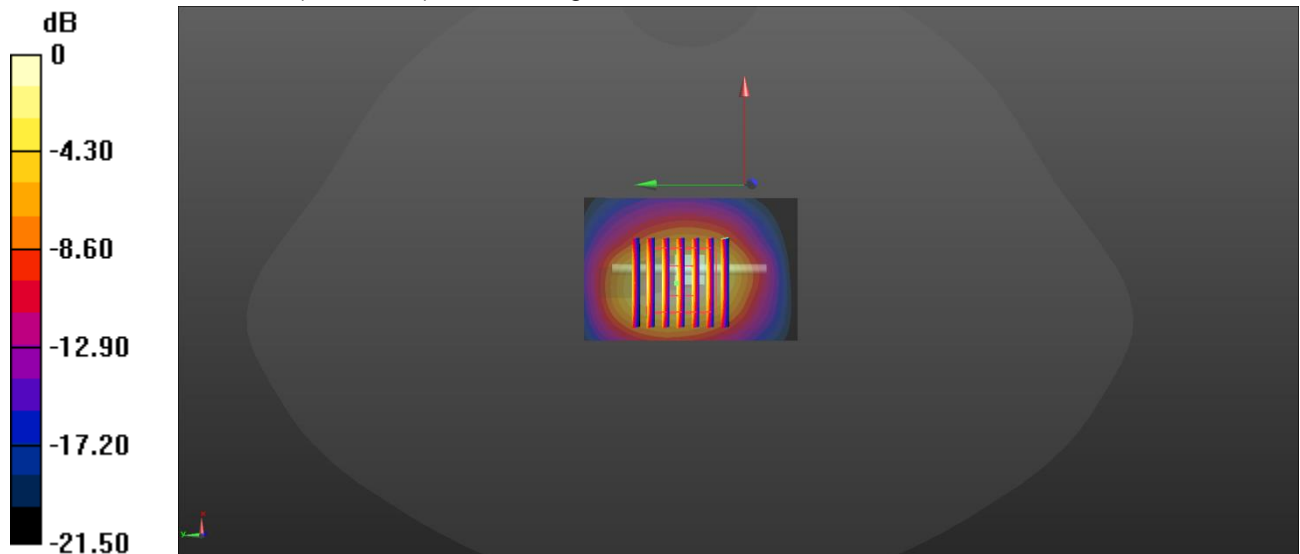
Head/d=10mm,Pin=250mW/Zoom Scan (7x7x7)/Cube 0: Measurement grid: dx=5mm, dy=5mm, dz=5mm

Reference Value = 91.02 V/m; Power Drift = -0.20 dB

Peak SAR (extrapolated) = 25.4 W/kg

SAR(1 g) = 12.6 W/kg; SAR(10 g) = 5.93 W/kg

Maximum value of SAR (measured) = 16.5 W/kg



0 dB = 16.5 W/kg = 12.17 dBW/kg

SystemPerformanceCheck-Head 5250MHz

Communication System: UID 0, CW (0); Frequency: 5250 MHz; Duty Cycle: 1:1

Medium parameters used (interpolated): $f = 5250$ MHz; $\sigma = 4.76$ S/m; $\epsilon_r = 35$; $\rho = 1000$ kg/m³

Phantom section: Flat Section

Ambient Temperature: 23.2°C; Liquid Temperature: 22.7°C;

DASY Configuration:

- Probe: EX3DV4 - SN7494; ConvF(5.65, 5.65, 5.65) @ 5250 MHz; Calibrated: 4/9/2021
- Sensor-Surface: 1.4mm (Mechanical Surface Detection)
- Electronics: DAE4 Sn1549; Calibrated: 3/23/2021
- Phantom: Twin-SAM V8.0 ; Type: QD 000 P41 AA; Serial: 1974
- DASY52 52.10.2(1495); SEMCAD X 14.6.12(7450)

Head/d=10mm, pin=100mW /Area Scan (41x41x1): Interpolated grid: dx=1.000 mm, dy=1.000 mm

Maximum value of SAR (interpolated) = 21.3 W/kg

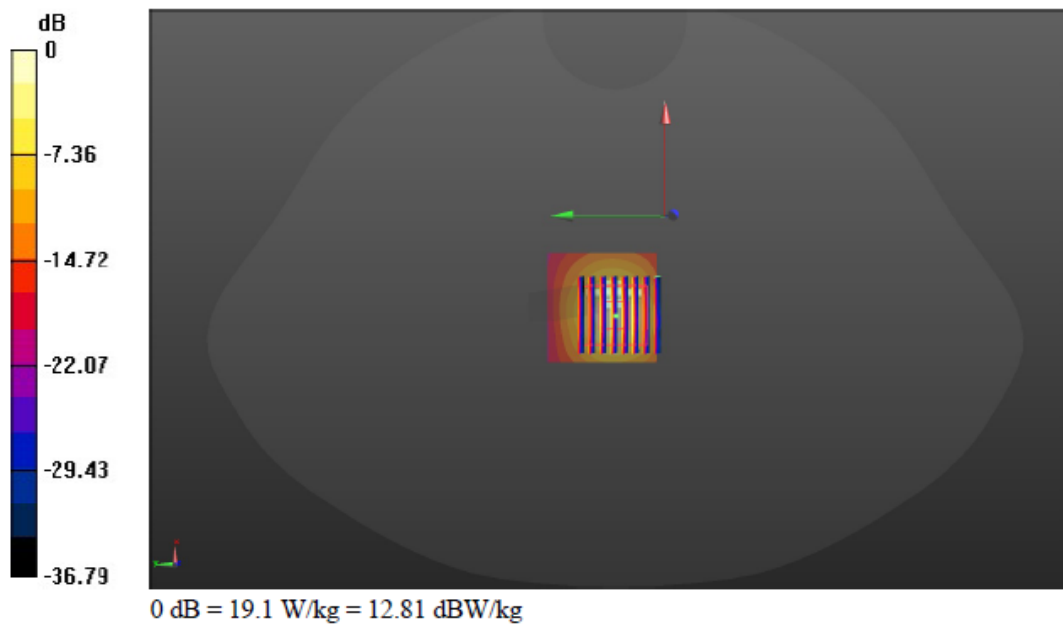
Head/d=10mm, pin=100mW /Zoom Scan (8x8x7)/Cube 0: Measurement grid: dx=4mm, dy=4mm, dz=1.4mm

Reference Value = 49.49 V/m; Power Drift = -0.23 dB

Peak SAR (extrapolated) = 31.2 W/kg

SAR(1 g) = 8.1 W/kg; SAR(10 g) = 2.34 W/kg

SystemPerformanceCheck-Head 5600MHz
Maximum value of SAR (measured) = 19.1 W/kg



SystemPerformanceCheck-Head 5600MHz

Communication System: UID 0, CW (0); Frequency: 5600 MHz;Duty Cycle: 1:1

Medium parameters used: $f = 5600$ MHz; $\sigma = 5.248$ S/m; $\epsilon_r = 34.645$; $\rho = 1000$ kg/m³

Phantom section: Flat Section

Ambient Temperature:22.8°C;Liquid Temperature:22.4°C;

DASY Configuration:

- Probe: EX3DV4 - SN7494; ConvF(4.95, 4.95, 4.95) @ 5600 MHz; Calibrated: 4/9/2021
- Sensor-Surface: 1.4mm (Mechanical Surface Detection)
- Electronics: DAE4 Sn1549; Calibrated: 3/23/2021
- Phantom: Twin-SAM V8.0 ; Type: QD 000 P41 AA; Serial: 1974
- DASY52 52.10.2(1495); SEMCAD X 14.6.12(7450)

Head/d=10mm, Pin=100mW, f=5600 MHz /Area Scan (51x41x1): Interpolated grid:

dx=1.000 mm, dy=1.000 mm

Maximum value of SAR (interpolated) = 23.2 W/kg

Head/d=10mm, Pin=100mW, f=5600 MHz /Zoom Scan (8x8x7)/Cube 0: Measurement

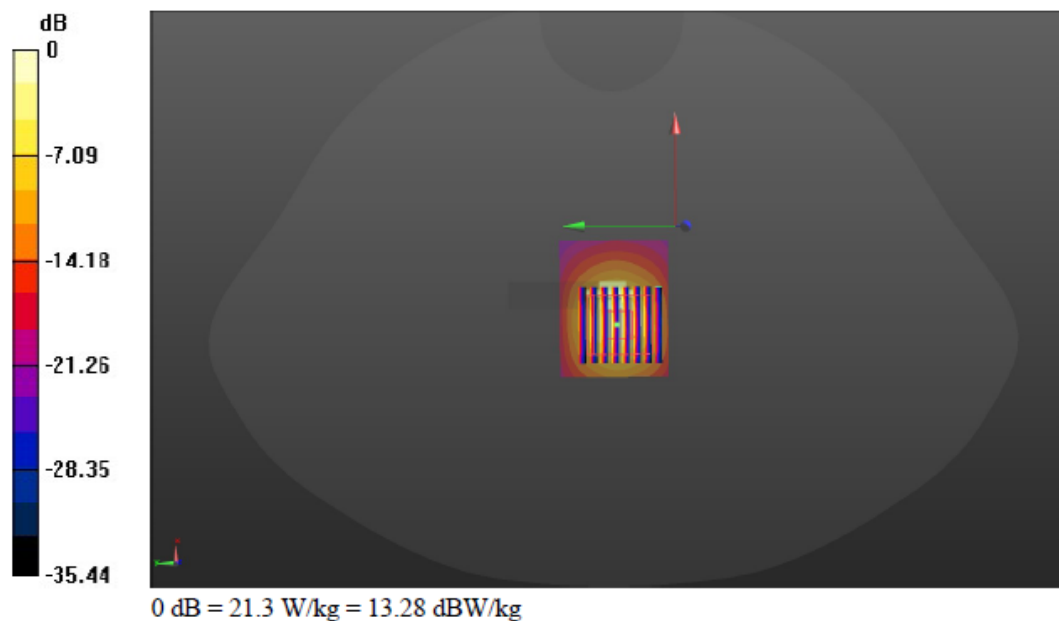
grid: dx=4mm, dy=4mm, dz=1.4mm

Reference Value = 40.75 V/m; Power Drift = 0.06 dB

Peak SAR (extrapolated) = 35.6 W/kg

SAR(1 g) = 8.79 W/kg; SAR(10 g) = 2.54 W/kg

Maximum value of SAR (measured) = 21.3 W/kg



SystemPerformanceCheck-Head 5750MHz

Communication System: UID 0, CW (0); Frequency: 5750 MHz;Duty Cycle: 1:1

Medium parameters used: $f = 5750$ MHz; $\sigma = 5.251$ S/m; $\epsilon_r = 35.022$; $\rho = 1000$ kg/m³

Phantom section: Flat Section

Ambient Temperature:23.5°C;Liquid Temperature:22.8°C;

DASY Configuration:

- Probe: EX3DV4 - SN7494; ConvF(4.86, 4.86, 4.86) @ 5750 MHz; Calibrated: 4/9/2021
- Sensor-Surface: 1.4mm (Mechanical Surface Detection)
- Electronics: DAE4 Sn1549; Calibrated: 3/23/2021
- Phantom: Twin-SAM V8.0 ; Type: QD 000 P41 AA; Serial: 1974
- DASY52 52.10.2(1495); SEMCAD X 14.6.12(7450)

Head/d=10mm,Pin=100mW/Area Scan (41x41x1): Interpolated grid: dx=1.000 mm, dy=1.000 mm

Maximum value of SAR (interpolated) = 21.8 W/kg

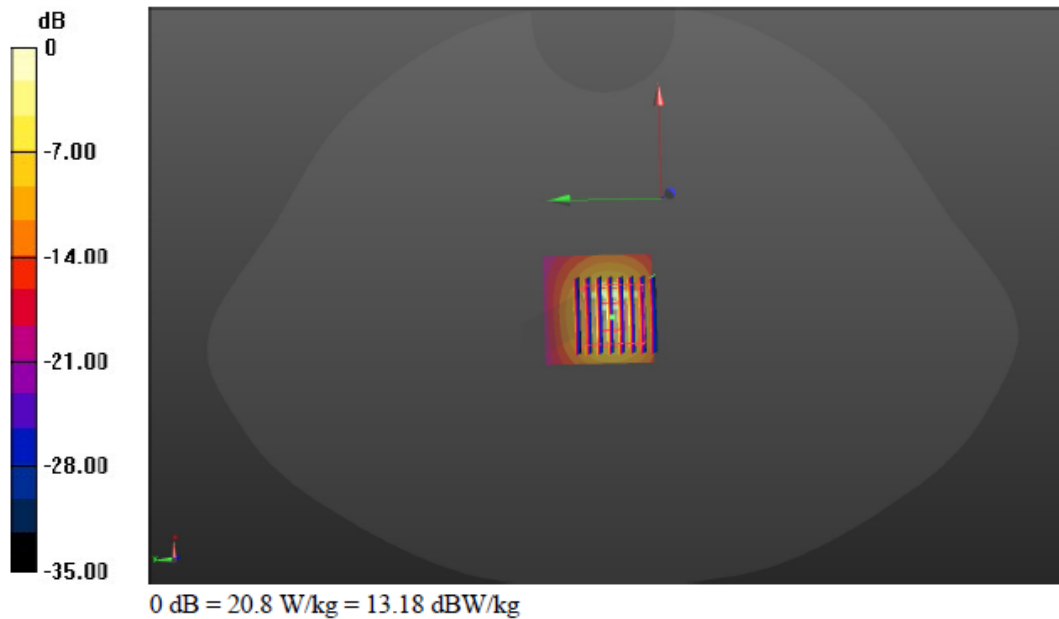
Head/d=10mm,Pin=100mW/Zoom Scan (8x8x7)/Cube 0: Measurement grid: dx=4mm, dy=4mm, dz=1.4mm

Reference Value = 50.00 V/m; Power Drift = 0.09 dB

Peak SAR (extrapolated) = 36.4 W/kg

SAR(1 g) = 8.47 W/kg; SAR(10 g) = 2.41 W/kg

Maximum value of SAR (measured) = 20.8 W/kg



10. SAR Exposure Limits

SAR assessments have been made in line with the requirements of FCC 47 CFR § 2.1093.

Type Exposure	Limit (W/kg)	
	General Population/ Uncontrolled Exposure Environment	Occupational/ Controlled Exposure Environment
Spatial Average SAR (whole body)	0.08	0.4
Spatial Peak SAR (1g cube tissue for head and trunk)	1.6	8.0
Spatial Peak SAR (10g for limb)	4.0	20.0

Population/Uncontrolled Environments: are defined as locations where there is the exposure of individual who have no knowledge or control of their exposure.

Occupational/Controlled Environments: are defined as locations where there is exposure that may be incurred by people who are aware of the potential for exposure (i.e. as a result of employment or occupation).

11. Conducted Power Measurement Results

11.1. WCDMA

1. The following tests were conducted according to the test requirements outlines in 3GPP TS34.121 specification.
2. The procedures in KDB 941225 D01 are applied for 3GPP Rel. 6 HSPA to configure the device in the required sub-test mode to determine SAR test exclusion

A summary of these settings are illustrated below:

HSDPA Setup Configuration:

- a) The EUT was connected to base station RS CMU200 referred to the setup configuration
- b) The RF path losses were compensated into the measurements
- c) A call was established between EUT and base station with following setting:
 - i. Set Gain Factors (β_c and β_d) and parameters were set according to each specific sub-test in the following table, C10.1.4, Quoted from the TS 34.121
 - ii. Set RMC 12.2Kbps + HSDPA mode
 - iii. Set Cell Power=-86dBm
 - iv. Set HS-DSCH Configuration Type to FRC (H-set 1, QPSK)
 - v. Select HSDPA uplink parameters
 - vi. Set Delta ACK, Delta NACK and Delta CQI=8
 - vii. Set Ack-Nack repetition Factor to 3
 - viii. Set CQI Feedback Cycle (K) to 4ms
 - ix. Set CQI repetition factor to 2
 - x. Power ctrl mode= all up bits
- d) The transmitter maximum output power was recorded.

Table C.10.1.4: β values for transmitter characteristics tests with HS-DPCCH

Sub-test	β_c	β_d	β_d (SF)	β_c/β_d	β_{HS} (Note 1, Note 2)	CM (dB) (Note 3)	MPR (dB) (Note 3)
1	2/15	15/15	64	2/15	4/15	0.0	0.0
2	12/15 (Note 4)	15/15 (Note 4)	64	12/15 (Note 4)	24/15	1.0	0.0
3	15/15	8/15	64	15/8	30/15	1.5	0.5
4	15/15	4/15	64	15/4	30/15	1.5	0.5

Note 1: Δ_{ACK} , Δ_{NACK} and $\Delta_{CQI} = 30/15$ with $\beta_{HS} = 30/15 * \beta_c$.

Note 2: For the HS-DPCCH power mask requirement test in clause 5.2C, 5.7A, and the Error Vector Magnitude (EVM) with HS-DPCCH test in clause 5.13.1A, and HSDPA EVM with phase discontinuity in clause 5.13.1AA, Δ_{ACK} and $\Delta_{NACK} = 30/15$ with $\beta_{HS} = 30/15 * \beta_c$, and $\Delta_{CQI} = 24/15$ with $\beta_{HS} = 24/15 * \beta_c$.

Note 3: CM = 1 for $\beta_c/\beta_d = 12/15$, $\beta_{HS}/\beta_c = 24/15$. For all other combinations of DPCCH, DPCCCH and HS-DPCCH the MPR is based on the relative CM difference. This is applicable for only UEs that support HSDPA in release 6 and later releases.

Note 4: For subtest 2 the β_c/β_d ratio of 12/15 for the TFC during the measurement period (TF1, TF0) is achieved by setting the signalled gain factors for the reference TFC (TF1, TF1) to $\beta_c = 11/15$ and $\beta_d = 15/15$.

Setup Configuration

HSUPA Setup Configuration:

- a) The EUT was connected to base station RS CMU200 referred to the setup configuration
- b) The RF path losses were compensated into the measurements
- c) A call was established between EUT and base station with following setting:
 - i. Call configs = 5.2b, 5.9b, 5.10b, and 5.13.2B with QPSK
 - ii. Set Gain Factors (β_c and β_d) and parameters (AG index) were set according to each specific sub-test in the following table, C11.1.3, Quoted from the TS 34.121
 - iii. Set Cell Power=-86dBm
 - iv. Set channel type= 12.2Kbps + HSPA mode
 - v. Set UE Target power
 - vi. Set Ctrl mode=Alternating bits
 - vii. Set and observe the E-TFCl
 - viii. Confirm that E-TFCl is equal the target E-TFCl of 75 for Sub-test 1, and other subtest's E-TFCl
- d) The transmitter maximum output power was recorded.

Table C.11.1.3: β values for transmitter characteristics tests with HS-DPCCH and E-DCH

Sub-test	β_c	β_d	β_d (SF)	β_c/β_d	β_{HS} (Note 1)	β_{EC}	β_{ED} (Note 5) (Note 6)	β_{ED} (SF)	β_{ED} (Codes)	CM (dB) (Note 2)	MPR (dB) (Note 2)	AG Index (Note 6)	E-TFCI
1	11/15 (Note 3)	15/15 (Note 3)	64	11/15 (Note 3)	22/15	209/25	1309/225	4	1	1.0	0.0	20	75
2	6/15	15/15	64	6/15	12/15	12/15	94/75	4	1	3.0	2.0	12	67
3	15/15	9/15	64	15/9	30/15	30/15	β_{ED1} : 47/15 β_{ED2} : 47/15	4 4	2	2.0	1.0	15	92
4	2/15	15/15	64	2/15	4/15	2/15	56/75	4	1	3.0	2.0	17	71
5	15/15 (Note 4)	15/15 (Note 4)	64	15/15 (Note 4)	30/15	24/15	134/15	4	1	1.0	0.0	21	81

- Note 1: Δ_{ACK} , Δ_{NACK} and $\Delta_{CQI} = 30/15$ with $\beta_{HS} = 30/15 * \beta_c$.
- Note 2: CM = 1 for $\beta_c/\beta_d = 12/15$, $\beta_{HS}/\beta_c = 24/15$. For all other combinations of DPDCH, DPCCH, HS-DPCCH, E-DPDCH and E-DPCCH the MPR is based on the relative CM difference.
- Note 3: For subtest 1 the β_c/β_d ratio of 11/15 for the TFC during the measurement period (TF1, TF0) is achieved by setting the signalled gain factors for the reference TFC (TF1, TF1) to $\beta_c = 10/15$ and $\beta_d = 15/15$.
- Note 4: For subtest 5 the β_c/β_d ratio of 15/15 for the TFC during the measurement period (TF1, TF0) is achieved by setting the signalled gain factors for the reference TFC (TF1, TF1) to $\beta_c = 14/15$ and $\beta_d = 15/15$.
- Note 5: In case of testing by UE using E-DPDCH Physical Layer category 1, Sub-test 3 is omitted according to TS25.306 Table 5.1g.
- Note 6: β_{ED} can not be set directly, it is set by Absolute Grant Value.

Setup Configuration

General Note:

- Per KDB 941225 D01, SAR for Head / Hotspot / Body-worn Exposure is measured using a 12.2Kbps RMC with TPC bit configured to all 1s
- Per KDB 941225 D01 RMC 12.2Kbps setting is used to evaluate SAR. If the maximum output power and Tune-up tolerance specified for production units in HSDPA/HSUPA is $\leq 1/4$ dB higher than RMC 12.2Kbps or when the highest reported SAR of the RMC 12.2Kbps is scaled by the ratio of specified maximum output power and tune-up tolerance of HSDPA / HSUPA to RMC 12.2Kbps and the adjusted SAR is ≤ 1.2 W/kg, SAR measurement is not required for HSDPA / HSUPA.

Mode		WCDMA Band II			WCDMA Band IV		
		Conducted Power (dBm)			Conducted Power (dBm)		
		CH9262 1852.4MHz	CH9400 1880MHz	CH9538 1907.6MHz	CH1312 1712.4MHz	CH1413 1732.6MHz	CH1513 1752.6MHz
AMR 12.2K		23.94	23.97	24.08	23.34	22.49	23.97
RMC 12.2K		23.98	24.01	24.12	23.38	22.52	24.01
HSDPA	Subtest-1	23.01	23.27	23.31	22.50	21.61	23.08
	Subtest-2	22.65	22.89	22.81	22.00	21.17	22.61
	Subtest-3	22.64	22.86	22.89	21.99	21.17	22.60
	Subtest-4	22.63	22.86	22.88	21.97	21.16	22.60
HSUPA	Subtest-1	22.98	23.10	22.54	22.35	21.18	22.60
	Subtest-2	22.09	22.27	22.01	21.26	20.75	21.58
	Subtest-3	21.21	21.44	21.95	20.86	19.85	21.59
	Subtest-4	21.96	22.17	22.43	21.58	20.75	22.02
	Subtest-5	22.78	22.95	23.01	22.38	21.66	23.09

Mode		WCDMA Band V		
		Conducted Power (dBm)		
		CH4132	CH4183	CH4233
		826.4MHz	836.6MHz	846.6MHz
AMR 12.2K		22.90	22.86	22.73
RMC 12.2K		22.93	22.89	22.76
HSDPA	Subtest-1	21.80	21.83	21.78
	Subtest-2	21.29	21.27	21.40
	Subtest-3	21.27	21.42	21.40
	Subtest-4	21.33	21.48	21.38
HSUPA	Subtest-1	21.27	21.53	21.39
	Subtest-2	20.65	20.75	20.64
	Subtest-3	20.56	19.76	19.66
	Subtest-4	21.10	20.74	20.56
	Subtest-5	21.53	21.66	21.56

11.2. LTE

General Note:

1. CMW500 base station simulator was used to setup the connection with EUT; the frequency band, channel, bandwidth, RB allocation configuration, modulation type are set in the base station simulator to configure EUT transmitting at maximum power and at different configurations which are requested to be reported to FCC, for conducted power measurement and SAR testing.
2. Per KDB 941225 D05v02r03, when a properly configured base station simulator is used for the SAR and power measurements, spectrum plots for each RB allocation and offset configuration is not required.
3. Per KDB 941225 D05v02r03, start with the largest channel bandwidth and measure SAR for QPSK with 1 RB allocation, using the RB offset and required test channel combination with the highest maximum output power for RB offsets at the upper edge, middle and lower edge of each required test channel.
4. Per KDB 941225 D05v02r03, 50% RB allocation for QPSK SAR testing follows 1RB QPSK allocation procedure.
5. Per KDB 941225 D05v02r03, for QPSK with 100% RB allocation, SAR is not required when the highest maximum output power for 100 % RB allocation is less than the highest maximum output power in 50% and 1 RB allocations and the highest reported SAR for 1 RB and 50% RB allocation are ≤ 0.8 W/kg. Otherwise, SAR is measured for the highest output power channel; and if the reported SAR is > 1.45 W/kg, the remaining required test channels must also be tested.
6. Per KDB 941225 D05v02r03, 16QAM output power for each RB allocation configuration is $>$ not $\frac{1}{2}$ dB higher than the same configuration in QPSK and the reported SAR for the QPSK configuration is ≤ 1.45 W/kg; Per KDB 941225 D05v02r03, 16QAM SAR testing is not required.
7. Per KDB 941225 D05v02r03, smaller bandwidth output power for each RB allocation configuration is $>$ not $\frac{1}{2}$ dB higher than the same configuration in the largest supported bandwidth, and the reported SAR for the largest supported bandwidth is ≤ 1.45 W/kg; Per KDB 941225 D05v02r03, smaller bandwidth SAR testing is not required.

LTE-FDD Band 2				Conducted Power(dBm)		
Band-width	Modulation	RB allocation	RB offset	18607	18900	19193
				1850.7MHz	1880MHz	1909.3MHz
1.4MHz	QPSK	1	0	23.10	23.26	23.20
			2	23.24	23.13	23.14
			5	23.14	23.17	23.10
		3	0	23.06	23.20	23.32
			1	23.26	23.32	23.34
			3	23.16	23.27	23.24
	6	0	22.12	22.39	22.24	
	16QAM	1	0	22.14	22.54	22.41
			2	22.56	22.51	22.53
			5	22.51	22.39	22.46
		3	0	21.99	22.16	22.45
			1	22.08	22.37	22.44
			3	22.08	22.22	22.69
	6	0	21.23	21.12	21.22	
Band-width	Modulation	RB allocation	RB offset	18615	18900	19185
				1851.5MHz	1880MHz	1908.5MHz
3MHz	QPSK	1	0	22.93	23.34	22.99
			8	23.13	23.19	23.11
			14	23.00	23.34	23.01
		8	0	22.05	22.47	22.40
			4	22.06	22.39	22.20
			7	22.10	22.26	22.17
	15	0	22.06	22.31	22.23	
	16QAM	1	0	22.00	22.21	22.22
			8	22.16	22.24	22.26
			14	22.19	22.26	22.21
		8	0	21.13	21.58	21.26
			4	21.20	21.58	21.26
			7	21.10	21.35	21.43
	15	0	21.05	21.30	21.35	

LTE-FDD Band 2				Conducted Power(dBm)			
Band-width	Modulation	RB allocation	RB offset	18625	18900	19175	
				1852.5MHz	1880MHz	1907.5MHz	
5MHz	QPSK	1	0	23.12	23.02	23.10	
			12	23.18	23.18	23.32	
			24	22.86	23.05	23.02	
		12	0	22.01	22.32	22.30	
			7	22.10	22.26	22.20	
			13	22.16	22.25	22.22	
	25	0	22.06	22.23	22.17		
	16QAM	1	0	22.36	22.25	22.03	
			12	22.34	22.30	22.05	
			24	22.01	22.34	22.02	
		12	0	21.02	21.26	21.38	
			7	21.12	21.07	21.22	
			13	21.22	21.24	21.28	
		25	0	20.99	21.37	21.46	
Band-width		Modulation	RB allocation	RB offset	18650	18900	19150
	1855MHz				1880MHz	1905MHz	
10MHz	QPSK	1	0	23.21	23.16	23.15	
			24	23.28	23.40	23.22	
			49	23.16	23.20	23.14	
		25	0	22.07	22.24	22.35	
			24	22.09	22.11	22.21	
			49	22.08	22.31	22.27	
		50	0	22.06	22.22	22.28	
		16QAM	1	0	22.18	22.25	22.26
				24	22.32	22.44	22.77
	49			22.23	22.63	22.20	
	25		0	21.06	21.22	21.28	
			24	21.15	21.32	21.29	
			49	21.15	21.32	21.26	
	50		0	21.02	21.39	21.19	

LTE-FDD Band 2				Conducted Power(dBm)		
Band-width	Modulation	RB allocation	RB offset	18675	18900	19125
				1857.5MHz	1880MHz	1902.5MHz
15MHz	QPSK	1	0	22.89	23.22	23.12
			38	23.16	23.21	23.41
			74	22.92	22.91	22.91
		38	0	22.52	22.71	22.36
			18	22.18	22.42	22.43
			37	22.64	22.14	22.25
	75	0	22.06	22.23	22.32	
	16QAM	1	0	21.96	22.58	22.45
			38	22.15	22.63	22.73
			74	22.20	22.23	22.13
		38	0	21.66	22.40	22.15
			18	22.11	22.42	22.18
			37	21.78	22.57	22.30
	75	0	21.12	21.20	21.31	
Band-width	Modulation	RB allocation	RB offset	18700	18900	19100
				1860MHz	1880MHz	1900MHz
20MHz	QPSK	1	0	23.01	23.04	23.11
			49	23.62	23.14	23.76
			99	22.96	22.97	22.90
		50	0	21.92	22.35	22.22
			25	22.03	22.12	22.26
			50	22.23	22.13	22.37
	100	0	22.07	22.10	22.26	
	16QAM	1	0	22.27	22.09	22.43
			49	22.43	22.23	22.67
			99	22.29	22.14	22.36
		50	0	21.11	21.27	21.32
			25	21.00	21.17	21.38
			50	21.14	21.33	21.29
	100	0	21.11	21.13	21.23	

LTE-FDD Band 4				Conducted Power(dBm)		
Band-width	Modulation	RB allocation	RB offset	19957	20175	20393
				1710.7MHz	1732.5MHz	1754.3MHz
1.4MHz	QPSK	1	0	24.40	24.54	24.76
			2	24.36	24.77	24.74
			5	24.46	24.58	24.90
		3	0	24.44	24.77	24.75
			1	24.44	24.53	24.67
			3	24.44	24.69	24.69
	6	0	23.53	23.66	23.70	
	16QAM	1	0	23.57	23.68	23.94
			2	23.78	23.87	24.11
			5	23.58	23.81	24.11
		3	0	23.59	23.54	23.66
			1	23.59	23.53	23.66
			3	23.64	23.74	23.66
		6	0	22.51	22.73	22.78
Band-width	Modulation	RB allocation	RB offset	19965	20175	20385
				1711.5MHz	1732.5MHz	1753.5MHz
3MHz	QPSK	1	0	24.38	24.49	24.19
			8	24.38	24.77	24.50
			14	24.41	24.72	24.54
		8	0	23.38	23.67	23.61
			4	23.36	23.57	23.54
			7	23.42	23.75	23.59
	15	0	23.40	23.56	23.67	
	16QAM	1	0	23.53	23.77	23.50
			8	23.58	23.85	23.94
			14	23.71	23.97	23.68
		8	0	22.57	22.61	22.76
			4	22.56	22.64	22.68
			7	22.43	22.87	22.75
		15	0	22.51	22.59	22.75

LTE-FDD Band 4				Conducted Power(dBm)		
Band-width	Modulation	RB allocation	RB offset	19975	20175	20375
				1712.5MHz	1732.5MHz	1752.5MHz
5MHz	QPSK	1	0	24.58	24.46	24.59
			12	24.28	24.84	24.61
			24	24.41	24.77	24.79
		12	0	23.54	23.75	23.77
			7	23.46	23.65	23.73
			13	23.45	23.75	23.84
	25	0	23.48	23.64	23.62	
	16QAM	1	0	23.44	23.52	23.54
			12	23.48	23.89	23.60
			24	23.70	23.90	23.88
		12	0	22.62	22.71	22.70
			7	22.61	22.69	22.67
			13	22.59	22.81	22.86
	25	0	22.66	22.79	22.76	
Band-width	Modulation	RB allocation	RB offset	20000	20175	20350
				1715MHz	1732.5MHz	1750MHz
10MHz	QPSK	1	0	24.46	24.44	24.58
			24	24.70	25.26	24.86
			49	24.41	24.59	24.72
		25	0	23.66	23.77	23.73
			24	23.66	23.68	23.63
			49	23.61	23.69	23.74
	50	0	23.65	23.75	23.71	
	16QAM	1	0	23.67	23.31	23.74
			24	23.78	24.15	24.22
			49	23.67	23.86	24.07
		25	0	22.62	22.76	22.67
			24	22.79	22.80	22.67
			49	22.66	23.00	22.81
	50	0	22.69	22.93	22.82	

LTE-FDD Band 4				Conducted Power(dBm)		
Band-width	Modulation	RB allocation	RB offset	20025	20175	20325
				1717.5MHz	1732.5MHz	1747.5MHz
15MHz	QPSK	1	0	24.17	24.27	24.56
			38	24.56	25.15	24.97
			74	24.28	24.60	24.35
		38	0	23.36	23.05	23.22
			18	23.66	23.14	23.98
			37	23.22	23.87	23.57
	75	0	23.70	23.87	23.79	
	16QAM	1	0	23.54	23.16	23.90
			38	23.59	23.94	23.84
			74	23.74	23.84	23.95
		38	0	23.64	23.03	23.83
			18	23.59	23.06	23.77
			37	23.47	23.89	23.67
	75	0	22.83	22.86	22.85	
Band-width	Modulation	RB allocation	RB offset	20050	20175	20300
				1720MHz	1732.5MHz	1745MHz
20MHz	QPSK	1	0	23.52	23.87	23.30
			49	23.27	23.84	23.54
			99	23.93	23.72	23.35
		50	0	24.22	23.79	24.01
			25	23.60	23.72	23.87
			50	23.66	23.81	23.92
	100	0	23.82	23.74	23.85	
	16QAM	1	0	23.72	23.01	23.36
			49	23.22	23.09	23.31
			99	23.15	23.72	23.68
		50	0	22.84	22.85	22.98
			25	22.66	22.88	22.98
			50	22.83	22.91	22.92
	100	0	22.91	22.86	22.96	

LTE-FDD Band 5				Conducted Power(dBm)		
Band-width	Modulation	RB allocation	RB offset	20407	20525	20643
				8.4.7MHz	836.5MHz	848.3MHz
1.4MHz	QPSK	1	0	23.86	23.88	23.90
			2	23.98	23.80	23.83
			5	23.77	24.02	23.96
		3	0	23.81	23.96	24.02
			1	23.95	24.08	24.00
			3	23.92	24.07	23.96
	6	0	22.87	22.93	23.11	
	16QAM	1	0	23.09	23.14	23.20
			2	22.94	23.05	23.32
			5	22.95	23.17	23.23
		3	0	22.71	23.09	23.09
			1	22.94	22.97	23.14
			3	22.85	22.95	23.02
	6	0	21.96	21.86	22.16	
Band-width	Modulation	RB allocation	RB offset	20415	20525	20635
				825.5MHz	836.5MHz	847.5MHz
3MHz	QPSK	1	0	23.87	23.72	23.87
			8	23.90	23.92	24.13
			14	24.16	23.95	24.04
		8	0	22.97	23.13	23.02
			4	22.90	23.03	22.95
			7	22.88	23.08	23.20
	15	0	22.90	23.10	23.05	
	16QAM	1	0	22.84	22.96	23.23
			8	22.96	23.11	23.16
			14	23.24	23.06	23.13
		8	0	21.96	22.24	22.19
			4	22.00	22.21	22.02
			7	21.93	22.30	22.17
	15	0	22.06	22.11	22.10	

LTE-FDD Band 5				Conducted Power(dBm)		
Band-width	Modulation	RB allocation	RB offset	20425	20525	20625
				826.5MHz	836.5MHz	846.5MHz
5MHz	QPSK	1	0	23.53	23.86	24.04
			12	23.93	24.19	24.21
			24	23.94	24.07	24.13
		12	0	22.87	23.02	23.01
			7	22.87	22.99	23.04
			13	22.90	23.00	23.01
	25	0	22.89	23.04	22.97	
	16QAM	1	0	22.78	22.80	23.13
			12	23.01	22.79	23.18
			24	23.07	22.77	23.26
		12	0	21.82	22.21	22.09
			7	21.97	22.08	22.20
			13	21.98	22.09	22.18
		25	0	22.00	22.23	22.24
Band-width		Modulation	RB allocation	RB offset	20450	20525
	829MHz				836.5MHz	844MHz
10MHz	QPSK	1	0	24.17	24.18	24.21
			24	24.24	24.42	24.16
			49	24.09	24.16	23.70
		25	0	23.07	23.28	23.33
			24	23.01	23.25	23.13
			49	23.29	23.21	23.09
	50	0	23.18	23.17	23.23	
	16QAM	1	0	23.49	23.34	23.37
			24	23.45	23.45	23.35
			49	23.20	23.21	22.74
		25	0	22.20	22.39	22.29
			24	22.20	22.37	22.39
			49	22.34	22.34	22.46
		50	0	22.19	22.30	22.27

LTE-FDD Band 12				Conducted Power(dBm)		
Band-width	Modulation	RB allocation	RB offset	23017	23095	23173
				699.7MHz	707.5MHz	715.3MHz
1.4MHz	QPSK	1	0	23.29	23.42	23.13
			2	23.10	23.59	23.18
			5	22.98	23.13	23.46
		3	0	23.10	23.19	23.45
			1	23.09	23.41	23.49
			3	22.96	23.27	23.41
	6	0	22.20	22.31	22.42	
	16QAM	1	0	22.56	22.55	22.58
			2	22.61	22.52	22.42
			5	22.36	22.45	22.57
		3	0	22.07	22.23	22.17
			1	22.02	22.22	22.56
			3	22.05	22.23	22.29
	6	0	21.29	21.15	21.20	
Band-width	Modulation	RB allocation	RB offset	23025	23095	23165
				700.5MHz	707.5MHz	714.5MHz
3MHz	QPSK	1	0	23.16	23.25	23.26
			8	23.11	23.55	23.49
			14	23.17	23.52	23.26
		8	0	22.47	22.31	22.41
			4	22.25	22.34	22.43
			7	22.14	22.52	22.56
	15	0	22.33	22.40	22.42	
	16QAM	1	0	22.35	22.35	22.43
			8	22.67	22.75	22.47
			14	22.42	22.71	22.61
		8	0	21.43	21.38	21.60
			4	21.46	21.47	21.60
			7	21.49	21.55	21.72
	15	0	21.50	21.39	21.61	

LTE-FDD Band 12				Conducted Power(dBm)		
Band-width	Modulation	RB allocation	RB offset	23035	23095	23155
				701.5MHz	707.5MHz	713.5MHz
5MHz	QPSK	1	0	23.36	23.38	23.28
			12	23.16	23.63	23.46
			24	23.00	23.49	23.07
		12	0	23.01	22.40	22.45
			7	22.22	22.37	22.51
			13	22.32	22.54	22.49
	25	0	22.40	22.43	22.40	
	16QAM	1	0	22.47	22.51	22.16
			12	22.49	22.64	22.27
			24	22.31	22.44	22.26
		12	0	21.26	21.25	21.46
			7	21.38	21.25	21.48
			13	21.48	21.60	21.29
		25	0	21.38	21.51	21.53
Band-width		Modulation	RB allocation	RB offset	23060	23095
	704MHz				707.5MHz	711MHz
10MHz	QPSK	1	0	23.23	22.85	23.19
			24	23.15	23.51	23.61
			49	23.52	23.22	23.29
		25	0	22.29	22.31	22.56
			24	22.28	22.39	22.48
			49	22.40	22.52	22.44
	50	0	22.29	22.35	22.53	
	16QAM	1	0	22.43	22.25	22.85
			24	22.41	22.69	22.74
			49	22.34	22.33	22.35
		25	0	21.37	21.53	21.49
			24	21.33	21.51	21.53
			49	21.36	21.59	21.43
		50	0	21.29	21.50	21.41

LTE-FDD Band 13				Conducted Power(dBm)		
Band-width	Modulation	RB allocation	RB offset	23205	23230	23255
				779.5MHz	782MHz	784.5MHz
5MHz	QPSK	1	0	23.36	23.08	23.11
			12	23.95	23.62	23.76
			24	23.24	23.64	23.25
		12	0	22.90	23.31	23.64
			7	23.03	23.18	23.51
			13	23.13	23.64	23.85
	25	0	22.95	23.51	23.71	
	16QAM	1	0	23.91	23.21	23.20
			12	23.36	23.56	23.53
			24	23.38	23.67	23.96
		12	0	22.82	22.19	22.47
			7	22.56	22.19	22.50
			13	22.32	22.47	22.96
		25	0	21.97	22.50	22.87
Band-width		Modulation	RB allocation	RB offset		23230
					782MHz	
10MHz	QPSK	1	0		24.02	
			24		24.22	
			49		24.96	
		25	0		23.02	
			24		23.01	
			49		23.64	
	50	0		23.38		
	16QAM	1	0		23.12	
			24		23.59	
			49		24.02	
		25	0		22.12	
			24		22.08	
			49		22.85	
		50	0		22.27	

LTE-FDD Band 17				Conducted Power(dBm)		
Band-width	Modulation	RB allocation	RB offset	23755	23790	23825
				706.5MHz	710MHz	713.5MHz
5MHz	QPSK	1	0	23.80	23.43	23.52
			12	23.79	23.82	23.68
			24	23.59	23.63	23.65
		12	0	22.52	22.55	22.54
			7	22.62	22.47	22.36
			13	22.61	22.53	22.63
	25	0	22.49	22.47	22.33	
	16QAM	1	0	22.99	22.66	22.27
			12	22.61	22.95	22.36
			24	22.49	22.67	22.76
		12	0	21.81	21.46	21.60
			7	21.78	21.49	21.33
			13	21.51	21.49	21.63
		25	0	21.54	21.62	20.69
Band-width		Modulation	RB allocation	RB offset	23780	23790
	709MHz				710MHz	711MHz
10MHz	QPSK	1	0	23.11	23.45	23.69
			24	23.88	23.71	23.75
			49	23.41	23.33	23.45
		25	0	22.77	22.64	22.74
			24	22.68	22.60	22.54
			49	22.57	22.68	22.64
	50	0	22.60	22.69	22.58	
	16QAM	1	0	22.44	22.72	22.66
			24	22.65	22.93	22.79
			49	22.62	22.54	22.45
		25	0	21.53	21.82	21.81
			24	21.54	21.73	21.77
			49	21.52	21.89	21.65
		50	0	21.70	21.47	21.80

LTE-FDD Band 66				Conducted Power(dBm)				
Band-width	Modulation	RB allocation	RB offset	131979	132322	132665		
				1710.7MHz	1745MHz	1779.3MHz		
1.4MHz	QPSK	1	0	24.12	23.80	24.32		
			2	24.11	23.99	24.47		
			5	24.11	23.91	24.44		
		3	0	24.18	24.11	24.18		
			1	24.18	24.26	24.19		
			3	24.23	24.27	24.13		
		6	0	23.17	23.05	23.32		
		16QAM	1	0	23.50	23.50	23.75	
				2	23.55	23.49	23.73	
	5			23.39	23.57	23.73		
	3		0	23.34	23.35	23.17		
			1	23.31	23.23	23.21		
			3	23.29	23.03	23.13		
	6		0	22.18	22.18	22.23		
	Band-width		Modulation	RB allocation	RB offset	131987	132322	132657
						1711.5MHz	1745MHz	1778.5MHz
	3MHz	QPSK	1	0	24.02	23.92	24.15	
				8	24.12	24.05	24.23	
14				24.11	24.01	24.10		
8			0	23.11	23.09	23.26		
			4	23.20	23.26	23.20		
			7	23.25	23.28	23.24		
15			0	23.25	23.15	23.38		
16QAM			1	0	23.28	23.53	23.58	
				8	23.33	23.58	23.59	
		14		23.35	23.48	23.05		
		8	0	22.42	22.33	22.30		
			4	22.42	22.22	22.28		
			7	22.41	22.34	22.29		
		15	0	22.25	22.31	22.40		

LTE-FDD Band 66				Conducted Power(dBm)		
Band-width	Modulation	RB allocation	RB offset	131997	132322	132647
				1712.5MHz	1745MHz	1777.5MHz
5MHz	QPSK	1	0	24.10	24.12	24.39
			12	24.05	24.18	24.36
			24	23.84	24.08	24.16
		12	0	23.18	23.09	23.29
			7	23.19	23.09	23.29
			13	23.24	23.19	23.27
	25	0	23.23	23.10	23.24	
	16QAM	1	0	23.29	23.58	23.03
			12	23.10	23.29	23.06
			24	23.28	23.31	22.86
		12	0	22.21	22.10	22.32
			7	22.16	22.03	22.31
			13	22.24	22.08	22.29
		25	0	22.37	22.19	22.35
Band-width		Modulation	RB allocation	RB offset	132022	132322
	1715MHz				1745MHz	1775MHz
10MHz	QPSK	1	0	24.11	24.16	23.97
			24	24.44	24.05	24.28
			49	24.16	23.93	24.12
		25	0	23.31	23.10	23.23
			24	23.26	23.10	23.20
			49	23.23	23.22	23.32
	50	0	23.27	23.14	23.30	
	16QAM	1	0	23.31	23.87	23.58
			24	23.97	23.61	23.44
			49	23.16	23.51	23.27
		25	0	22.42	22.22	22.20
			24	22.43	22.25	22.10
			49	22.39	22.26	22.37
		50	0	22.27	22.19	22.25

LTE-FDD Band 66				Conducted Power(dBm)		
Band-width	Modulation	RB allocation	RB offset	132047	132322	132597
				1717.5MHz	1745MHz	1772.5MHz
15MHz	QPSK	1	0	24.16	23.91	24.17
			38	24.22	24.27	24.35
			74	23.79	23.86	24.09
		38	0	23.23	23.55	23.13
			18	23.23	23.53	23.29
			37	23.66	23.62	23.22
	75	0	23.25	23.15	23.34	
	16QAM	1	0	23.21	23.27	23.91
			38	23.31	23.18	23.72
			74	23.20	23.53	23.28
		38	0	23.27	23.75	23.10
			18	23.14	23.69	23.10
			37	22.77	23.69	23.07
	75	0	22.20	22.22	22.28	
Band-width	Modulation	RB allocation	RB offset	132072	132322	132572
				1720MHz	1745MHz	1770MHz
20MHz	QPSK	1	0	24.14	24.17	24.36
			49	24.46	24.58	24.51
			99	24.26	24.07	24.24
		50	0	23.42	23.18	23.38
			25	23.25	23.22	23.44
			50	23.24	23.42	23.36
	100	0	23.27	23.15	23.34	
	16QAM	1	0	23.55	23.22	23.45
			49	23.51	23.26	23.67
			99	23.87	23.36	23.50
		50	0	22.20	22.37	22.53
			25	22.23	22.34	22.51
			50	22.24	22.18	22.43
	100	0	22.33	22.27	22.46	

LTE-FDD Band 71				Conducted Power(dBm)		
Band-width	Modulation	RB allocation	RB offset	133147	133297	133447
				665.5MHz	680.5MHz	695.5MHz
5MHz	QPSK	1	0	20.52	20.82	20.39
			12	20.91	20.63	20.12
			24	20.36	20.07	20.99
		12	0	19.49	19.84	19.73
			7	19.51	19.87	19.75
			13	19.34	19.50	20.00
	25	0	19.53	19.74	19.90	
	16QAM	1	0	19.63	19.99	19.33
			12	19.64	19.89	19.14
			24	19.74	19.33	19.36
		12	0	18.57	18.98	18.84
			7	18.59	19.00	18.85
			13	18.46	18.66	19.13
		25	0	18.64	18.79	19.03
Band-width	Modulation	RB allocation	RB offset	133172	133297	133422
				668MHz	680.5MHz	693MHz
10MHz	QPSK	1	0	19.71	19.11	19.24
			24	19.36	19.25	19.45
			49	19.55	19.65	19.63
		25	0	19.95	19.11	19.01
			24	19.96	19.01	19.01
			49	19.50	19.60	19.25
	50	0	19.19	19.77	19.54	
	16QAM	1	0	19.56	19.25	19.42
			24	19.54	19.12	19.93
			49	19.65	19.60	19.93
		25	0	19.05	19.10	19.25
			24	19.04	19.10	19.07
			49	19.36	19.64	19.09
		50	0	18.27	18.83	18.60

LTE-FDD Band 71				Conducted Power(dBm)		
Band-width	Modulation	RB allocation	RB offset	133197	133297	133397
				670.5MHz	680.5MHz	690.5MHz
15MHz	QPSK	1	0	20.13	20.45	20.11
			38	20.17	20.31	20.42
			74	20.51	20.39	20.93
		38	0	19.49	19.35	19.18
			18	19.87	19.27	19.67
			37	19.90	19.33	19.19
	75	0	19.41	19.67	19.59	
	16QAM	1	0	19.47	19.29	19.24
			38	19.86	19.63	19.60
			74	19.93	19.30	19.20
		38	0	19.48	19.25	19.22
			18	19.88	19.33	19.61
			37	19.94	19.32	19.36
	75	0	18.50	18.74	18.61	
Band-width	Modulation	RB allocation	RB offset	133222	133322	133372
				673MHz	683MHz	688MHz
20MHz	QPSK	1	0	19.97	19.63	19.63
			49	19.92	19.55	19.20
			99	19.96	19.19	19.47
		50	0	19.25	19.77	19.34
			25	19.19	19.79	19.38
			50	19.69	19.11	19.49
	100	0	19.51	19.32	19.47	
	16QAM	1	0	19.18	19.56	19.44
			49	19.14	19.92	19.21
			99	19.30	19.35	19.41
		50	0	18.29	18.91	18.42
			25	18.27	18.91	18.43
			50	18.79	18.21	18.52
	100	0	18.56	18.41	18.52	

11.3. Wi-Fi

For 2.4GHz Wi-Fi SAR testing, highest average RF output power channel for the lowest data rate for 802.11b were for SAR evaluation.

The maximum output power specified for production units are determined for all applicable 802.11 transmission modes in each standalone and aggregated frequency band. Maximum output power is measured for the highest maximum output power configuration(s) in each frequency band according to the default power measurement procedures.

SAR testing is not required for OFDM mode(s) when the highest reported SAR for DSSS is adjusted by the ratio of OFDM to DSSS specified maximum output power and the adjusted SAR is ≤ 1.2 W/kg.

Wi-Fi 2.4G				
Mode	Channel	Frequency (MHz)	Conducted Peak Power (dBm)	Conducted Average Power (dBm)
802.11b	1	2412	15.12	12.88
	6	2437	15.41	13.24
	11	2462	16.43	13.95
802.11g	1	2412	14.94	11.40
	6	2437	15.31	11.60
	11	2462	16.01	12.28
802.11n (HT20)	1	2412	15.09	11.56
	6	2437	15.59	12.04
	11	2462	16.24	12.40
802.11n (HT40)	3	2422	14.88	11.24
	6	2437	15.48	11.8
	9	2452	15.63	11.96

Wi-Fi 5G U-NII-1					
Bandwidth	Mode	Channel	Frequency (MHz)	Average Power (dBm)	Tune-up limit (dBm)
20	802.11n (HT20)	36	5180	10.03	10.50
		44	5220	10.55	11.00
		48	5240	10.85	11.00
	802.11a	36	5180	11.04	11.50
		44	5220	11.48	11.50
		48	5240	11.73	12.00
40	802.11n (HT40)	38	5190	10.05	10.50
		46	5230	10.69	11.00

Wi-Fi 5G U-NII-2A					
Bandwidth	Mode	Channel	Frequency (MHz)	Average Power (dBm)	Tune-up limit (dBm)
20	802.11n (HT20)	52	5260	10.12	10.50
		56	5280	10.99	11.00
		64	5320	11.35	11.50
	802.11a	52	5260	10.02	10.50
		56	5280	10.94	11.00
		64	5320	11.28	11.50
40	802.11n (HT40)	54	5270	11.02	11.50
		62	5310	10.48	10.50

Wi-Fi 5G U-NII-2C					
Bandwidth	Mode	Channel	Frequency (MHz)	Average Power (dBm)	Tune-up limit (dBm)
20	802.11n (HT20)	100	5500	10.69	11.00
		116	5580	9.81	10.00
		144	5720	9.45	9.50
	802.11a	100	5500	10.85	11.00
		116	5580	9.98	10.00
		144	5720	9.54	10.00
40	802.11n (HT40)	102	5510	10.66	11.00
		110	5550	10.52	11.00
		142	5710	9.44	9.50

Wi-Fi 5G U-NII-3					
Bandwidth	Mode	Channel	Frequency (MHz)	Average Power (dBm)	Tune-up limit (dBm)
20	802.11n (HT20)	149	5745	11.26	11.50
		157	5785	11.86	12.00
		165	5825	11.17	11.50
	802.11a	149	5745	11.25	11.50
		157	5785	11.86	12.00
		165	5825	11.13	11.50
40	802.11n (HT40)	151	5755	11.36	11.50
		159	5795	11.84	12.00

11.4. Bluetooth

Bluetooth				
Mode	Channel	Frequency (MHz)	Conducted Peak Power (dBm)	Conducted Average Power (dBm)
GFSK	0	2402	5.72	5.52
	39	2441	6.46	5.45
	78	2480	5.31	4.98
$\pi/4$ QPSK	0	2402	6.94	5.67
	39	2441	6.77	5.24
	78	2480	6.38	4.58
8DPSK	0	2402	7.17	5.61
	39	2441	7.15	5.18
	78	2480	6.77	5.20
BLE	0	2402	2.41	2.34
	19	2440	2.36	2.29
	39	2480	2.25	2.16

12. Maximum Tune-up Limit

WCDMA			
Mode	Maximum Tune-up (dBm)		
	FDD Band II	FDD Band IV	FDD Band V
AMR 12.2Kbps	24.50	24.00	23.00
RMC 12.2Kbps	24.50	24.50	23.00
HSDPA Subtest-1	23.50	23.50	22.00
HSDPA Subtest-2	23.00	23.00	21.50
HSDPA Subtest-3	23.00	23.00	21.50
HSDPA Subtest-4	23.00	23.00	21.50
HSUPA Subtest-1	23.50	23.00	22.00
HSUPA Subtest-2	22.50	22.00	21.00
HSUPA Subtest-3	22.00	22.00	21.00
HSUPA Subtest-4	22.50	22.50	21.50
HSUPA Subtest-5	23.50	23.50	22.00

LTE				
Fequency Band	Band-width(MHz)	Modulation	RB allocation	Maximum Tune-up (dBm)
FDD Band 2	1.4	QPSK	1	23.50
			3	23.50
			6	22.50
		16QAM	1	23.00
			3	23.00
			6	21.50
	3	QPSK	1	23.50
			8	22.50
			15	22.50
		16QAM	1	22.50
			8	22.00
			15	21.50
	5	QPSK	1	23.50
			12	22.50
			25	22.50
		16QAM	1	22.50
			12	21.50
			25	21.50
	10	QPSK	1	23.50
			25	22.50
			50	22.50
		16QAM	1	23.00
			25	21.50
			50	21.50
	15	QPSK	1	23.50
			38	23.00
			75	22.50
16QAM		1	23.00	
		38	23.00	
		75	21.50	
20	QPSK	1	24.00	
		50	22.50	
		100	22.50	
	16QAM	1	23.00	
		50	21.50	
		100	21.50	

LTE				
Fequency Band	Band-width(MHz)	Modulation	RB allocation	Maximum Tune-up (dBm)
FDD Band 4	1.4	QPSK	1	25.00
			3	25.00
			6	24.00
		16QAM	1	24.50
			3	24.00
			6	23.00
	3	QPSK	1	25.00
			8	24.00
			15	24.00
		16QAM	1	24.00
			8	23.00
			15	23.00
	5	QPSK	1	25.00
			12	24.00
			25	24.00
		16QAM	1	24.00
			12	23.00
			25	23.00
	10	QPSK	1	25.50
			25	24.00
			50	24.00
		16QAM	1	24.50
			25	23.50
			50	23.00
	15	QPSK	1	25.50
			38	24.00
			75	24.00
		16QAM	1	24.00
			38	24.00
			75	23.00
20	QPSK	1	24.00	
		50	24.50	
		100	24.00	
	16QAM	1	24.00	
		50	23.00	
		100	23.00	

LTE				
Fequency Band	Band-width(MHz)	Modulation	RB allocation	Maximum Tune-up (dBm)
FDD Band 5	1.4	QPSK	1	24.50
			3	24.50
			6	23.50
		16QAM	1	23.50
			3	23.50
			6	22.50
	3	QPSK	1	24.50
			8	23.50
			15	23.50
		16QAM	1	23.50
			8	22.50
			15	22.50
	5	QPSK	1	24.50
			12	23.50
			25	23.50
		16QAM	1	23.50
			12	22.50
			25	22.50
	10	QPSK	1	24.50
			25	23.50
			50	23.50
16QAM		1	23.50	
		25	22.50	
		50	22.50	

LTE				
Fequency Band	Band-width(MHz)	Modulation	RB allocation	Maximum Tune-up (dBm)
FDD Band 12	1.4	QPSK	1	24.00
			3	23.50
			6	22.50
		16QAM	1	23.00
			3	23.00
			6	21.50
	3	QPSK	1	24.00
			8	23.00
			15	22.50
		16QAM	1	23.00
			8	22.00
			15	22.00
	5	QPSK	1	24.00
			12	23.50
			25	22.50
		16QAM	1	23.00
			12	22.00
			25	22.00
	10	QPSK	1	24.00
			25	23.00
			50	23.00
16QAM		1	23.00	
		25	22.00	
		50	22.00	

LTE				
Fequency Band	Band-width(MHz)	Modulation	RB allocation	Maximum Tune-up (dBm)
FDD Band 13	5	QPSK	1	24.00
			12	24.00
			25	24.00
		16QAM	1	24.00
			12	23.00
			25	23.00
	10	QPSK	1	25.00
			25	24.00
			50	23.50
		16QAM	1	24.50
			25	23.00
			50	22.50

LTE				
Fequency Band	Band-width(MHz)	Modulation	RB allocation	Maximum Tune-up (dBm)
FDD Band 17	5	QPSK	1	24.00
			12	23.00
			25	22.50
		16QAM	1	23.00
			12	22.00
			25	22.00
	10	QPSK	1	24.00
			25	23.00
			50	23.00
		16QAM	1	23.00
			25	22.00
			50	22.00

LTE				
Fequency Band	Band-width(MHz)	Modulation	RB allocation	Maximum Tune-up (dBm)
FDD Band 66	1.4	QPSK	1	24.50
			3	24.50
			6	23.50
		16QAM	1	24.00
			3	23.50
			6	22.50
	3	QPSK	1	24.50
			8	23.50
			15	23.50
		16QAM	1	24.00
			8	22.50
			15	22.50
	5	QPSK	1	24.50
			12	23.50
			25	23.50
		16QAM	1	24.00
			12	22.50
			25	22.50
	10	QPSK	1	24.50
			25	23.50
			50	23.50
		16QAM	1	24.00
			25	22.50
			50	22.50
15	QPSK	1	24.50	
		38	24.00	
		75	23.50	
	16QAM	1	24.00	
		38	24.00	
		75	22.50	
20	QPSK	1	25.00	
		50	23.50	
		100	23.50	
	16QAM	1	24.00	
		50	23.00	
		100	22.50	

LTE				
Frequency Band	Band-width(MHz)	Modulation	RB allocation	Maximum Tune-up (dBm)
FDD Band 71	5	QPSK	1	21.00
			12	20.50
			25	20.00
		16QAM	1	20.00
			12	19.50
			25	19.50
	10	QPSK	1	20.00
			25	20.00
			50	20.00
		16QAM	1	20.00
			25	20.00
			50	19.00
	15	QPSK	1	21.00
			38	20.00
			75	20.00
		16QAM	1	20.00
			38	20.00
			75	19.00
	20	QPSK	1	20.00
			50	20.00
			100	20.00
		16QAM	1	20.00
			50	19.00
			100	19.00

The allowed Maximum Power Reduction (MPR) for the maximum output power in Table 6.2.2-1 due to higher order modulation and transmit bandwidth configuration (resource blocks) is specified in Table 6.2.3-1.

Table 6.2.3-1: Maximum Power Reduction (MPR) for Power Class 1, 2 and 3

Modulation	Channel bandwidth / Transmission bandwidth (N_{RB})						MPR (dB)
	1.4 MHz	3.0 MHz	5 MHz	10 MHz	15 MHz	20 MHz	
QPSK	> 5	> 4	> 8	> 12	> 16	> 18	≤ 1
16 QAM	≤ 5	≤ 4	≤ 8	≤ 12	≤ 16	≤ 18	≤ 1
16 QAM	> 5	> 4	> 8	> 12	> 16	> 18	≤ 2
64 QAM	≤ 5	≤ 4	≤ 8	≤ 12	≤ 16	≤ 18	≤ 2
64 QAM	> 5	> 4	> 8	> 12	> 16	> 18	≤ 3
256 QAM	≥ 1						≤ 5

Wi-Fi 2.4G		
Mode	Channel	Maximum Tune-up (dBm) Conducted Average Power
802.11b	1	13.00
	6	13.50
	11	14.00
802.11g	1	11.50
	6	12.00
	11	12.50
802.11n(HT20)	1	12.00
	6	12.50
	11	12.50
802.11n(HT40)	3	11.50
	6	12.00
	9	12.00

Wi-Fi 5G U-NII-1		
Mode	Channel	Maximum Tune-up (dBm) Conducted Average Power
802.11n (HT20)	36	11.50
	40	11.50
	48	12.00
802.11a	36	10.50
	40	11.00
	48	11.00
802.11n (HT40)	38	10.50
	46	11.00

Wi-Fi 5G U-NII-2A		
Mode	Channel	Maximum Tune-up (dBm) Conducted Average Power
802.11n (HT20)	52	10.50
	56	11.00
	64	11.50
802.11a	52	10.50
	56	11.00
	64	11.50
802.11n (HT40)	54	11.50
	62	10.50

Wi-Fi 5G U-NII-2C		
Mode	Channel	Maximum Tune-up (dBm) Conducted Average Power
802.11n (HT20)	100	11.00
	116	10.00
	144	9.50
802.11a	100	11.00
	116	10.00
	144	10.00
802.11n (HT40)	102	11.00
	110	11.00
	142	9.50

Wi-Fi 5G U-NII-3		
Mode	Channel	Maximum Tune-up (dBm) Conducted Average Power
802.11n (HT20)	149	11.50
	157	12.00
	165	11.50
802.11a	149	11.50
	157	12.00
	165	11.50
802.11n (HT40)	151	11.50
	159	12.00

Bluetooth		
Mode	Channel	Maximum Tune-up (dBm) Conducted Average Power
GFSK	0	6.00
	39	5.50
	78	5.00
π/4 QPSK	0	6.00
	39	5.50
	78	5.00
8DPSK	0	6.00
	39	5.50
	78	5.50
BLE	0	2.50
	19	2.50
	39	2.50

Per KDB 447498 D01, the 1-g and 10-g SAR test exclusion thresholds for 100MHz to 6GHz at test separation distances ≤ 50 mm are determined by:

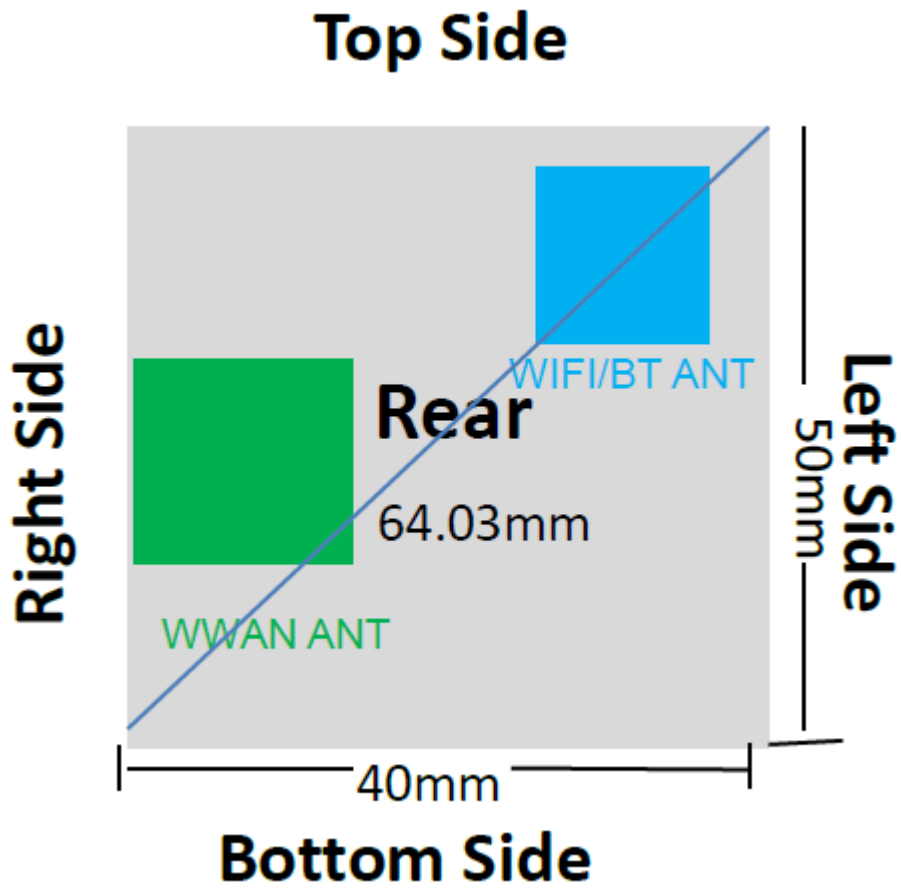
$[(\text{max. Power of channel, including tune-up tolerance, mW}) / (\text{min. test separation distance, mm})] * [\sqrt{f(\text{GHz})}] \leq 3.0$ for 1-g SAR

Band/Mode	F(GHz)	Position	Separation Distance (mm)	Exclusion Thresholds	SAR test exclusion
Bluetooth	2.450	Head	10	0.6	Yes
		Extremity	0	1.2	Yes

Per KDB 447498 D01, when the minimum test separation distance is <5mm, a distance of 5mm is applied to determine SAR test exclusion.

The test exclusion threshold is ≤ 3 , SAR testing is not required.

13. Antenna Location



14. Measured and Reported SAR Results

SAR Test Reduction criteria are as follows:

- Reported SAR(W/kg) for WWAN = Measured SAR *Tune-up Scaling Factor
- Reported SAR(W/kg) for Wi-Fi and Bluetooth = Measured SAR * Tune-up scaling factor * Duty Cycle scaling factor
- Duty Cycle scaling factor = 1 / Duty cycle (%)

KDB 447498 D01 General RF Exposure Guidance:

Testing of other required channels within the operating mode of a frequency band is not required when the reported 1-g or 10-g SAR for the mid-band or highest output power channel is:

- ≤ 0.8 W/kg or 2.0 W/kg, for 1-g or 10-g respectively, when the transmission band is ≤ 100 MHz
- ≤ 0.6 W/kg or 1.5 W/kg, for 1-g or 10-g respectively, when the transmission band is between 100 MHz and 200 MHz
- ≤ 0.4 W/kg or 1.0 W/kg, for 1-g or 10-g respectively, when the transmission band is ≥ 200 MHz

KDB 941225 D01 SAR test for 3G SAR Test Reduction Procedure:

When the maximum output power and tune-up tolerance specified for production units in a secondary mode is $\leq \frac{1}{4}$ dB higher than the primary mode or when the highest reported SAR of the primary mode is scaled by the ratio of specified maximum output power and tune-up tolerance of secondary to primary mode and the adjusted SAR is ≤ 1.2 W/kg, SAR measurement is not required for the secondary mode.

W-CDMA Guidance

SAR for next to the ear head exposure is measured using a 12.2 kbps RMC with TPC bits configured to all "1's". The 3G SAR test reduction procedure is applied to AMR configurations with 12.2 kbps RMC (Head) and other spreading codes and multiple DPDCHn configurations supported by the handset with 12.2 kbps RMC (Body-Worn Accessory) as the primary mode.

SAR measurement is not required for the HSDPA, HSUPA, DC-HSDPA and HSPA+. When primary mode and the adjusted SAR is ≤ 1.2 W/kg and secondary mode is $\leq \frac{1}{4}$ dB higher than the primary mode

KDB 941225 D05 SAR for LTE Devices:

SAR test reduction is applied using the following criteria:

- Start with the largest channel bandwidth and measure SAR for QPSK with 1 RB, and 50% RB allocation, using the RB offset and required test channel combination with the highest maximum output power among RB offsets at the upper edge, middle and lower edge of each required test channel.
- When the reported SAR is > 0.8 W/kg, testing for other Channels is performed at the highest output power level for 1RB, and 50% RB configuration for that channel.
- Testing for 100% RB configuration is performed at the highest output power level for 100% RB configuration across the Low, Mid and High Channel when the highest reported SAR for 1 RB and 50% RB are > 0.8 W/kg. Testing for the remaining required channels is not needed because the reported SAR for 100% RB Allocation < 1.45 W/kg.
- Testing for 16-QAM and 64-QAM modulation is not required because the reported SAR for QPSK is < 1.45 W/Kg and its output power is not more than 0.5 dB higher than that of QPSK.
- Testing for the other channel bandwidths is not required because the reported SAR for the highest channel bandwidth is < 1.45 W/Kg and its output power is not more than 0.5 dB higher than that of the highest channel bandwidth.

KDB 248227 D01 SAR meas for 802.11:

When 802.11 frame gaps are accounted for in the transmission, a maximum transmission duty factor of 92 - 96% is typically achievable in most test mode configurations. A minimum transmission duty factor of 85% is required to avoid certain hardware and device implementation issues related to wide range SAR scaling. The reported SAR must be scaled to 100% transmission duty factor to determine compliance at the maximum tune-up tolerance limit.

SAR test reduction for 802.11 Wi-Fi transmission mode configurations are considered separately for DSSS and OFDM. An initial test position is determined to reduce the number of tests required for certain exposure configurations with multiple test positions. An initial test configuration is determined for each frequency band and aggregated band according to maximum output power, channel bandwidth, wireless mode configurations and other operating parameters to streamline the measurement requirements. For 2.4 GHz DSSS, either the initial test position or DSSS procedure is applied to reduce the number of SAR tests; these are mutually exclusive. For OFDM, an initial test position is only applicable to next to the ear, UMPC mini-tablet and hotspot mode configurations, which is tested using the initial test configuration to facilitate test reduction. For other exposure conditions with a fixed test position, SAR test reduction is determined using only the initial test configuration.

The multiple test positions require SAR measurements in head, hotspot mode or UMPC mini-tablet configurations may be reduced according to the highest reported SAR determined using the initial test position(s) by applying the DSSS or OFDM SAR measurement procedures in the required wireless mode test configuration(s). The initial test position(s) is measured using the highest measured maximum output power channel in the required wireless mode test configuration(s). When the reported SAR for the initial test position is:

- ≤ 0.4 W/kg, further SAR measurement is not required for the other test positions in that exposure configuration and wireless mode combination within the frequency band or aggregated band. DSSS and OFDM configurations are considered separately according to the required SAR procedures.
- > 0.4 W/kg, SAR is repeated using the same wireless mode test configuration tested in the initial test position to measure the subsequent next closet/smallest test separation distance and maximum coupling test position, on the highest maximum output power channel, until the reported SAR is ≤ 0.8 W/kg or all required test positions are tested.
 - For subsequent test positions with equivalent test separation distance or when exposure is dominated by coupling conditions, the position for maximum coupling condition should be tested.
 - When it is unclear, all equivalent conditions must be tested.
- For all positions/configurations tested using the initial test position and subsequent test positions, when the reported SAR is > 0.8 W/kg, measure the SAR for these positions/configurations on the subsequent next highest measured output power channel(s) until the reported SAR is ≤ 1.2 W/kg or all required test channels are considered.
 - The additional power measurements required for this step should be limited to those necessary for identifying subsequent highest output power channels to apply the test reduction.
- When the specified maximum output power is the same for both UNII 1 and UNII 2A, begin SAR measurements in UNII 2A with the channel with the highest measured output power. If the reported SAR for UNII 2A is ≤ 1.2 W/kg, SAR is not required for UNII 1; otherwise treat the remaining bands separately and test them independently for SAR.
- When the specified maximum output power is different between UNII 1 and UNII 2A, begin SAR with the band that has the higher specified maximum output. If the highest reported SAR for the band with the highest specified power is ≤ 1.2 W/kg, testing for the band with the lower specified output power is not required; otherwise test the remaining bands independently for SAR.

To determine the initial test position, Area Scans were performed to determine the position with the Maximum Value of SAR (measured). The position that produced the highest Maximum Value of SAR is considered the worst case position; thus used as the initial test position.

14.1. Head SAR**WCDMA Band II**

Mode	Test Position	Frequency		Conducted Power (dBm)	Tune-up limit (dBm)	Tune-up scaling factor	Power Drift(dB)	Measured SAR(1g)	Report SAR(1g)	Plot No.
		CH	MHz					(W/kg)	(W/kg)	
RMC 12.2Kbps	Front	9262	1852.4	23.98	24.50	1.127	-0.10	0.824	0.929	-
		9400	1880	24.01	24.50	1.119	0.09	0.866	0.969	-
		9538	1907.6	24.12	24.50	1.091	-0.15	0.901	0.983	1

WCDMA Band IV

Mode	Test Position	Frequency		Conducted Power (dBm)	Tune-up limit (dBm)	Tune-up scaling factor	Power Drift(dB)	Measured SAR(1g)	Report SAR(1g)	Plot No.
		CH	MHz					(W/kg)	(W/kg)	
RMC 12.2Kbps	Front	1312	1712.4	23.38	24.50	1.294	-	-	-	-
		1413	1732.6	22.52	24.50	1.578	-	-	-	-
		1513	1752.6	24.01	24.50	1.119	0.01	0.462	0.517	2

WCDMA Band V

Mode	Test Position	Frequency		Conducted Power (dBm)	Tune-up limit (dBm)	Tune-up scaling factor	Power Drift(dB)	Measured SAR(1g)	Report SAR(1g)	Plot No.
		CH	MHz					(W/kg)	(W/kg)	
RMC 12.2Kbps	Front	4132	826.4	22.93	23.00	1.016	-0.20	0.232	0.236	3
		4183	836.6	22.89	23.00	1.026	-	-	-	-
		4233	846.6	22.76	23.00	1.057	-	-	-	-

LTE Band 2

Mode	Test Position	Frequency		Conducted Power (dBm)	Tune-up limit (dBm)	Tune-up scaling factor	Power Drift(dB)	Measured SAR(1g)	Report SAR(1g)	Plot No.
		CH	MHz					(W/kg)	(W/kg)	
20M QPSK 1RB	Front	18700	1860	23.62	24.00	1.091	0.06	1.160	1.266	-
		18900	1880	23.14	24.00	1.219	0.09	1.070	1.304	-
		19100	1900	23.76	24.00	1.057	-0.14	1.290	1.363	4
20M QPSK 50RB	Front	18700	1860	22.23	22.50	1.064	-0.05	0.844	0.898	-
		18900	1880	22.13	22.50	1.089	0.08	0.765	0.833	-
		19100	1900	22.37	22.50	1.030	-0.10	0.896	0.923	-
20M QPSK 100RB	Front	18700	1860	22.07	22.50	1.104	0.09	0.744	0.821	-
		18900	1880	22.10	22.50	1.096	-0.06	0.751	0.823	-
		19100	1900	22.26	22.50	1.057	-0.14	0.872	0.922	-

LTE Band 4

Mode	Test Position	Frequency		Conducted Power (dBm)	Tune-up limit (dBm)	Tune-up scaling factor	Power Drift(dB)	Measured SAR(1g)	Report SAR(1g)	Plot No.
		CH	MHz					(W/kg)	(W/kg)	
20M QPSK 1RB	Front	20050	1720	23.93	24.00	1.016	0.04	0.577	0.586	-
		20175	1732.5	23.72	24.00	1.067	-	-	-	-
		20300	1745	23.35	24.00	1.161	-	-	-	-
20M QPSK 50RB	Front	20050	1720	24.22	24.50	1.067	-0.12	0.628	0.670	5
		20175	1732.5	23.79	24.50	1.178	-	-	-	-
		20300	1745	24.01	24.50	1.119	-	-	-	-

LTE Band 5

Mode	Test Position	Frequency		Conducted Power (dBm)	Tune-up limit (dBm)	Tune-up scaling factor	Power Drift(dB)	Measured SAR(1g)	Report SAR(1g)	Plot No.
		CH	MHz					(W/kg)	(W/kg)	
10M QPSK 1RB	Front	20450	829	24.24	24.50	1.062	-	-	-	-
		20525	836.5	24.42	24.50	1.019	-0.12	0.219	0.223	6
		20600	844	24.16	24.50	1.081	-	-	-	-
10M QPSK 25RB	Front	20450	829	23.07	23.50	1.104	-	-	-	-
		20525	836.5	23.28	23.50	1.052	-	-	-	-
		20600	844	23.33	23.50	1.040	-0.08	0.186	0.193	-

LTE Band 12

Mode	Test Position	Frequency		Conducted Power (dBm)	Tune-up limit (dBm)	Tune-up scaling factor	Power Drift(dB)	Measured SAR(1g)	Report SAR(1g)	Plot No.
		CH	MHz					(W/kg)	(W/kg)	
10M QPSK 1RB	Front	23060	704	23.15	24.00	1.216	-	-	-	-
		23095	707.5	23.51	24.00	1.119	-	-	-	-
		23130	711	23.61	24.00	1.094	-0.15	0.225	0.246	7
10M QPSK 25RB	Front	23060	704	22.29	23.00	1.178	-	-	-	-
		23095	707.5	22.31	23.00	1.172	-	-	-	-
		23130	711	22.56	23.00	1.107	-0.02	0.192	0.212	-

LTE Band 13

Mode	Test Position	Frequency		Conducted Power (dBm)	Tune-up limit (dBm)	Tune-up scaling factor	Power Drift(dB)	Measured SAR(1g)	Report SAR(1g)	Plot No.
		CH	MHz					(W/kg)	(W/kg)	
10M QPSK 1RB	Front	23230	782	24.96	25.00	1.009	-0.07	0.286	0.289	8
10M QPSK 25RB	Front	23230	782	23.64	24.00	1.086	-0.12	0.226	0.246	-

LTE Band 17

Mode	Test Position	Frequency		Conducted Power (dBm)	Tune-up limit (dBm)	Tune-up scaling factor	Power Drift(dB)	Measured SAR(1g)	Report SAR(1g)	Plot No.
		CH	MHz					(W/kg)	(W/kg)	
10M QPSK 1RB	Front	23780	709	23.88	24.00	1.028	-0.20	0.407	0.418	9
		23790	710	23.71	24.00	1.069	-	-	-	-
		23800	711	23.75	24.00	1.059	-	-	-	-
10M QPSK 25RB	Front	23780	709	22.77	23.00	1.054	-0.11	0.356	0.375	-
		23790	710	22.64	23.00	1.086	-	-	-	-
		23800	711	22.74	23.00	1.062	-	-	-	-

LTE Band 66

Mode	Test Position	Frequency		Conducted Power (dBm)	Tune-up limit (dBm)	Tune-up scaling factor	Power Drift(dB)	Measured SAR(1g)	Report SAR(1g)	Plot No.
		CH	MHz					(W/kg)	(W/kg)	
20M QPSK 1RB	Front	132072	1720	24.46	25.00	1.132	-	-	-	-
		132322	1745	24.58	25.00	1.102	-0.04	0.621	0.684	10
		132572	1770	24.51	25.00	1.119	-	-	-	-
20M QPSK 50RB	Front	132072	1720	23.24	23.50	1.062	-	-	-	-
		132322	1745	23.42	23.50	1.019	-0.08	0.567	0.578	-
		132572	1770	23.36	23.50	1.033	-	-	-	-

LTE Band 71

Mode	Test Position	Frequency		Conducted Power (dBm)	Tune-up limit (dBm)	Tune-up scaling factor	Power Drift(dB)	Measured SAR(1g)	Report SAR(1g)	Plot No.
		CH	MHz					(W/kg)	(W/kg)	
20M QPSK 1RB	Front	133222	673	19.97	20.00	1.007	0.19	0.409	0.412	11
		133322	683	19.63	20.00	1.089	-	-	-	-
		133372	688	19.63	20.00	1.089	-	-	-	-
20M QPSK 50RB	Front	133222	673	19.69	20.00	1.074	0.12	0.356	0.382	-
		133322	683	19.11	20.00	1.227	-	-	-	-
		133372	688	19.49	20.00	1.125	-	-	-	-

WIFI 2.4G

Mode	Test Position	Frequency		Conducted Power (dBm)	Tune-up limit (dBm)	Tune-up scaling factor	Duty Cycle	Duty Cycle Scaling Factor	Power Drift(dB)	Measured SAR(1g)	Report SAR(1g)	Plot No.
		CH	MHz							(W/kg)	(W/kg)	
802.11b 1Mbps	Front	1	2412	12.88	13.00	1.028	97.60%	1.02	-	-	-	-
		6	2437	13.24	13.50	1.062	97.60%	1.02	-	-	-	-
		11	2462	13.95	14.00	1.012	97.60%	1.02	0.08	0.017	0.018	12

WIFI 5G U-NII-1

Mode	Test Position	Frequency		Conducted Power (dBm)	Tune-up limit (dBm)	Tune-up scaling factor	Duty Cycle	Duty Cycle Scaling Factor	Power Drift(dB)	Measured SAR(1g)	Report SAR(1g)	Plot No.
		CH	MHz							(W/kg)	(W/kg)	
802.11a	Front	36	5180	11.04	11.50	1.112	87.30%	1.15	-	-	-	-
		44	5220	11.48	11.50	1.005	87.22%	1.15	-	-	-	-
		48	5240	11.73	12.00	1.064	87.22%	1.15	-0.13	0.007	0.009	25

WIFI 5G U-NII-2A

Mode	Test Position	Frequency		Conducted Power (dBm)	Tune-up limit (dBm)	Tune-up scaling factor	Duty Cycle	Duty Cycle Scaling Factor	Power Drift(dB)	Measured SAR(1g)	Report SAR(1g)	Plot No.
		CH	MHz							(W/kg)	(W/kg)	
802.11a	Front	52	5260	10.02	10.50	1.117	87.22%	1.15	-	-	-	-
		56	5280	10.94	11.00	1.014	87.15%	1.15	-	-	-	-
		64	5320	11.28	11.50	1.052	87.20%	1.15	-0.10	0.004	0.005	26

WIFI 5G U-NII-2C

Mode	Test Position	Frequency		Conducted Power (dBm)	Tune-up limit (dBm)	Tune-up scaling factor	Duty Cycle	Duty Cycle Scaling Factor	Power Drift(dB)	Measured SAR(1g)	Report SAR(1g)	Plot No.
		CH	MHz							(W/kg)	(W/kg)	
802.11a	Front	100	5500	10.85	11.00	1.035	87.15%	1.15	0.03	0.007	0.008	27
		120	5600	9.98	10.00	1.005	87.22%	1.15	-	-	-	-
		140	5700	9.54	10.00	1.112	87.15%	1.15	-	-	-	-

WIFI 5G U-NII-3

Mode	Test Position	Frequency		Conducted Power (dBm)	Tune-up limit (dBm)	Tune-up scaling factor	Duty Cycle	Duty Cycle Scaling Factor	Power Drift(dB)	Measured SAR(1g)	Report SAR(1g)	Plot No.
		CH	MHz							(W/kg)	(W/kg)	
802.11a	Front	149	5745	11.25	11.50	1.059	87.23%	1.15	-	-	-	-
		157	5785	11.86	12.00	1.033	87.22%	1.15	-0.06	0.007	0.008	28
		165	5825	11.13	11.50	1.089	87.22%	1.15	-	-	-	-

14.2. Extremity SAR**WCDMA Band II**

Mode	Test Position	Frequency		Conducted Power (dBm)	Tune-up limit (dBm)	Tune-up scaling factor	Power Drift(dB)	Measured SAR(10g)	Report SAR(10g)	Plot No.
		CH	MHz					(W/kg)	(W/kg)	
RMC 12.2Kbps	Limbs	9262	1852.4	23.98	24.50	1.127	-	-	-	-
		9400	1880	24.01	24.50	1.119	-	-	-	-
		9538	1907.6	24.12	24.50	1.091	-0.16	1.050	1.146	13

WCDMA Band IV

Mode	Test Position	Frequency		Conducted Power (dBm)	Tune-up limit (dBm)	Tune-up scaling factor	Power Drift(dB)	Measured SAR(10g)	Report SAR(10g)	Plot No.
		CH	MHz					(W/kg)	(W/kg)	
RMC 12.2Kbps	Limbs	1312	1712.4	23.38	24.50	1.294	-	-	-	-
		1413	1732.6	22.52	24.50	1.578	-	-	-	-
		1513	1752.6	24.01	24.50	1.119	0.08	0.937	1.049	14

WCDMA Band V

Mode	Test Position	Frequency		Conducted Power (dBm)	Tune-up limit (dBm)	Tune-up scaling factor	Power Drift(dB)	Measured SAR(10g)	Report SAR(10g)	Plot No.
		CH	MHz					(W/kg)	(W/kg)	
RMC 12.2Kbps	Limbs	4132	826.4	22.93	23.00	1.016	0.14	0.238	0.242	15
		4183	836.6	22.89	23.00	1.026	-	-	-	-
		4233	846.6	22.76	23.00	1.057	-	-	-	-

LTE Band 2

Mode	Test Position	Frequency		Conducted Power (dBm)	Tune-up limit (dBm)	Tune-up scaling factor	Power Drift(dB)	Measured SAR(10g)	Report SAR(10g)	Plot No.
		CH	MHz					(W/kg)	(W/kg)	
20M QPSK 1RB	Limbs	18700	1860	23.62	24.00	1.091	-	-	-	-
		18900	1880	23.14	24.00	1.219	-	-	-	-
		19100	1900	23.76	24.00	1.057	-0.06	1.710	1.807	16
20M QPSK 50RB	Limbs	18700	1860	22.23	22.50	1.064	-	-	-	-
		18900	1880	22.13	22.50	1.089	-	-	-	-
		19100	1900	22.37	22.50	1.030	-0.09	1.440	1.484	-

LTE Band 4

Mode	Test Position	Frequency		Conducted Power (dBm)	Tune-up limit (dBm)	Tune-up scaling factor	Power Drift(dB)	Measured SAR(10g)	Report SAR(10g)	Plot No.
		CH	MHz					(W/kg)	(W/kg)	
20M QPSK 1RB	Limbs	20050	1720	23.93	24.00	1.016	-0.03	1.020	1.037	-
		20175	1732.5	23.72	24.00	1.067	-	-	-	-
		20300	1745	23.35	24.00	1.161	-	-	-	-
20M QPSK 50RB	Limbs	20050	1720	24.22	24.50	1.067	-0.12	1.210	1.291	17
		20175	1732.5	23.79	24.50	1.178	-	-	-	-
		20300	1745	24.01	24.50	1.119	-	-	-	-

LTE Band 5

Mode	Test Position	Frequency		Conducted Power (dBm)	Tune-up limit (dBm)	Tune-up scaling factor	Power Drift(dB)	Measured SAR(10g)	Report SAR(10g)	Plot No.
		CH	MHz					(W/kg)	(W/kg)	
10M QPSK 1RB	Limbs	20450	829	24.24	24.50	1.062	-	-	-	-
		20525	836.5	24.42	24.50	1.019	-0.09	0.235	0.239	18
		20600	844	24.16	24.50	1.081	-	-	-	-
10M QPSK 25RB	Limbs	20450	829	23.07	23.50	1.104	-	-	-	-
		20525	836.5	23.28	23.50	1.052	-	-	-	-
		20600	844	23.33	23.50	1.040	-0.06	0.202	0.210	-

LTE Band 12

Mode	Test Position	Frequency		Conducted Power (dBm)	Tune-up limit (dBm)	Tune-up scaling factor	Power Drift(dB)	Measured SAR(10g)	Report SAR(10g)	Plot No.
		CH	MHz					(W/kg)	(W/kg)	
10M QPSK 1RB	Limbs	23060	704	23.15	24.00	1.216	-	-	-	-
		23095	707.5	23.51	24.00	1.119	-	-	-	-
		23130	711	23.61	24.00	1.094	0.16	0.225	0.246	19
10M QPSK 25RB	Limbs	23060	704	22.29	23.00	1.178	-	-	-	-
		23095	707.5	22.31	23.00	1.172	-	-	-	-
		23130	711	22.56	23.00	1.107	-0.08	0.200	0.221	-

LTE Band 13

Mode	Test Position	Frequency		Conducted Power (dBm)	Tune-up limit (dBm)	Tune-up scaling factor	Power Drift(dB)	Measured SAR(10g)	Report SAR(10g)	Plot No.
		CH	MHz					(W/kg)	(W/kg)	
10M QPSK 1RB	Limbs	23230	782	24.96	25.00	1.009	-0.13	0.246	0.248	20
10M QPSK 25RB	Limbs	23230	782	23.64	24.00	1.086	0.08	0.215	0.234	-

LTE Band 17

Mode	Test Position	Frequency		Conducted Power (dBm)	Tune-up limit (dBm)	Tune-up scaling factor	Power Drift(dB)	Measured SAR(10g)	Report SAR(10g)	Plot No.
		CH	MHz					(W/kg)	(W/kg)	
10M QPSK 1RB	Limbs	23780	709	23.88	24.00	1.028	-0.11	0.287	0.295	21
		23790	710	23.71	24.00	1.069	-	-	-	-
		23800	711	23.75	24.00	1.059	-	-	-	-
10M QPSK 25RB	Limbs	23780	709	22.77	23.00	1.054	-0.02	0.255	0.269	-
		23790	710	22.64	23.00	1.086	-	-	-	-
		23800	711	22.74	23.00	1.062	-	-	-	-

LTE Band 66

Mode	Test Position	Frequency		Conducted Power (dBm)	Tune-up limit (dBm)	Tune-up scaling factor	Power Drift(dB)	Measured SAR(10g)	Report SAR(10g)	Plot No.
		CH	MHz					(W/kg)	(W/kg)	
20M QPSK 1RB	Limbs	132072	1720	24.46	25.00	1.132	-	-	-	-
		132322	1745	24.58	25.00	1.102	-0.07	1.080	1.190	22
		132572	1770	24.51	25.00	1.119	-	-	-	-
20M QPSK 50RB	Limbs	132072	1720	23.24	23.50	1.062	-	-	-	-
		132322	1745	23.42	23.50	1.019	-0.02	0.856	0.872	-
		132572	1770	23.36	23.50	1.033	-	-	-	-

LTE Band 71

Mode	Test Position	Frequency		Conducted Power (dBm)	Tune-up limit (dBm)	Tune-up scaling factor	Power Drift(dB)	Measured SAR(10g)	Report SAR(10g)	Plot No.
		CH	MHz					(W/kg)	(W/kg)	
20M QPSK 1RB	Limbs	133222	673	19.97	20.00	1.007	-0.08	0.268	0.270	23
		133322	683	19.63	20.00	1.089	-	-	-	-
		133372	688	19.63	20.00	1.089	-	-	-	-
20M QPSK 50RB	Limbs	133222	673	19.69	20.00	1.074	-0.05	0.223	0.239	-
		133322	683	19.11	20.00	1.227	-	-	-	-
		133372	688	19.49	20.00	1.125	-	-	-	-

WIFI 2.4G

Mode	Test Position	Frequency		Conducted Power (dBm)	Tune-up limit (dBm)	Tune-up scaling factor	Duty Cycle	Duty Cycle Scaling Factor	Power Drift(dB)	Measured SAR(10g)	Report SAR(10g)	Plot No.
		CH	MHz							(W/kg)	(W/kg)	
802.11b 1Mbps	Limbs	1	2412	12.88	13.00	1.028	97.60%	1.02	-	-	-	-
		6	2437	13.24	13.50	1.062	97.60%	1.02	-	-	-	-
		11	2462	13.95	14.00	1.012	97.60%	1.02	-0.11	0.028	0.029	24

WIFI 5G U-NII-1

Mode	Test Position	Frequency		Conducted Power (dBm)	Tune-up limit (dBm)	Tune-up scaling factor	Duty Cycle	Duty Cycle Scaling Factor	Power Drift(dB)	Measured SAR(10g)	Report SAR(10g)	Plot No.
		CH	MHz							(W/kg)	(W/kg)	
802.11a	Limbs	36	5180	11.04	11.50	1.112	87.30%	1.15	-	-	-	-
		44	5220	11.48	11.50	1.005	87.22%	1.15	-	-	-	-
		48	5240	11.73	12.00	1.064	87.22%	1.15	-0.14	0.023	0.028	29

WIFI 5G U-NII-2A

Mode	Test Position	Frequency		Conducted Power (dBm)	Tune-up limit (dBm)	Tune-up scaling factor	Duty Cycle	Duty Cycle Scaling Factor	Power Drift(dB)	Measured SAR(10g)	Report SAR(10g)	Plot No.
		CH	MHz							(W/kg)	(W/kg)	
802.11a	Limbs	52	5260	10.02	10.50	1.117	87.22%	1.15	-	-	-	-
		56	5280	10.94	11.00	1.014	87.15%	1.15	-	-	-	-
		64	5320	11.28	11.50	1.052	87.20%	1.15	-0.10	0.016	0.019	30

WIFI 5G U-NII-2C

Mode	Test Position	Frequency		Conducted Power (dBm)	Tune-up limit (dBm)	Tune-up scaling factor	Duty Cycle	Duty Cycle Scaling Factor	Power Drift(dB)	Measured SAR(10g)	Report SAR(10g)	Plot No.
		CH	MHz							(W/kg)	(W/kg)	
802.11a	Limbs	100	5500	10.85	11.00	1.035	87.15%	1.15	-0.11	0.026	0.031	31
		120	5600	9.98	10.00	1.005	87.22%	1.15	-	-	-	-
		140	5700	9.54	10.00	1.112	87.15%	1.15	-	-	-	-

WIFI 5G U-NII-3

Mode	Test Position	Frequency		Conducted Power (dBm)	Tune-up limit (dBm)	Tune-up scaling factor	Duty Cycle	Duty Cycle Scaling Factor	Power Drift(dB)	Measured SAR(10g)	Report SAR(10g)	Plot No.
		CH	MHz							(W/kg)	(W/kg)	
802.11a	Front	149	5745	11.25	11.50	1.059	87.23%	1.15	-	-	-	-
		157	5785	11.86	12.00	1.033	87.22%	1.15	-0.08	0.005	0.006	32
		165	5825	11.13	11.50	1.089	87.22%	1.15	-	-	-	-

SAR Test Data Plots to the Appendix A.

15. SAR Measurement Variability

In accordance with published RF Exposure KDB 865664 D01 SAR measurement 100 MHz to 6 GHz. These additional measurements are repeated after the completion of all measurements requiring the same head or body tissue-equivalent medium in a frequency band. The test device should be returned to ambient conditions (normal room temperature) with the battery fully charged before it is re-mounted on the device holder for the repeated measurement(s) to minimize any unexpected variations in the repeated results.

- 1) Repeated measurement is not required when the original highest measured SAR is <math><0.8</math> or 2 W/kg (1-g or 10-g respectively); steps 2) through 4) do not apply.
- 2) When the original highest measured SAR is ≥ 0.8 or 2 W/kg (1-g or 10-g respectively), repeat that measurement once.
- 3) Perform a second repeated measurement only if the ratio of largest to smallest SAR for the original and first repeated measurements is > 1.20 or when the original or repeated measurement is ≥ 1.45 or 3.6 W/kg (~ 10% from the 1-g or 10-g respective SAR limit).
- 4) Perform a third repeated measurement only if the original, first, or second repeated measurement is ≥ 1.5 or 3.75 W/kg (1-g or 10-g respectively) and the ratio of largest to smallest SAR for the original, first and second repeated measurements is > 1.20 .

Band	Test Position	Frequency		Highest Measured SAR (W/kg)	First Repeated		Second Repeated	
		CH	MHz		Measured SAR(W/kg)	Largest to Smallest SAR Ratio	Measured SAR(W/kg)	Largest to Smallest SAR Ratio
WCDMA Band II	Front	9538	1907.6	0.901	0.886	1.017	N/A	N/A
LTE Band 2	Front	19100	1900	1.290	1.210	1.066	N/A	N/A

16. Simultaneous Transmission analysis

No.	Simultaneous Transmission Configurations	Head	Limbs	Note
1	WCDMA(voice) + Bluetooth (data)	Yes	Yes	
2	WCDMA(voice) + WLAN (data)	Yes	Yes	
3	WCDMA (data) + Bluetooth (data)	Yes	Yes	
4	WCDMA (data) + WLAN (data)	Yes	Yes	
5	LTE + Bluetooth (data)	Yes	Yes	
6	LTE + WLAN (data)	Yes	Yes	

General note:

1. WLAN and Bluetooth share the same antenna, and cannot transmit simultaneously.
2. EUT will choose either GSM or WCDMA LTE according to the network signal condition; therefore, they will not operate simultaneously at any moment.
3. The reported SAR summation is calculated based on the same configuration and test position
4. For simultaneous transmission analysis, Bluetooth SAR is estimated per KDB 447498 D01 based on the formula below
 - a) $[(\text{max. Power of channel, including tune-up tolerance, mW}) / (\text{min. test separation distance, mm})]^* [\sqrt{f(\text{GHz})/x}] \text{W/kg}$ for test separation distances $\leq 50\text{mm}$; when $x=7.5$ for 1-g SAR, and $x=18.75$ for 10-g SAR.
 - b) When the minimum separation distance is $<5\text{mm}$, the distance is used 5mm to determine SAR test exclusion
 - c) 0.4 W/kg for 1-g SAR and 1.0W/kg for 10-g SAR, when the test separation distances is $>50\text{mm}$.

Bluetooth Max power	Exposure position	Head	Extremity
	Test separation	10mm	0mm
6.0dBm	Estimated SAR (W/kg)	0.083	0.066

16.1. Head

PCT + DTS					
WWAN Band		Exposure Position	Max SAR (W/kg)		Summed SAR
			PCT	DTS	(W/kg)
WCDMA	Band II	Front	0.983	0.018	1.001
	Band IV	Front	0.517	0.018	0.535
	Band V	Front	0.236	0.018	0.254
LTE	B2 1RB	Front	1.363	0.018	1.381
	B2 50RB	Front	0.923	0.018	0.941
	B4 1RB	Front	0.586	0.018	0.604
	B4 50RB	Front	0.670	0.018	0.688
	B5 1RB	Front	0.223	0.018	0.241
	B5 25RB	Front	0.193	0.018	0.211
	B12 1RB	Front	0.246	0.018	0.264
	B12 25RB	Front	0.212	0.018	0.230
	B13 1RB	Front	0.289	0.018	0.307
	B13 25RB	Front	0.246	0.018	0.264
	B17 1RB	Front	0.418	0.018	0.436
	B17 25RB	Front	0.375	0.018	0.393
	B66 1RB	Front	0.684	0.018	0.702
	B66 50RB	Front	0.578	0.018	0.596
	B71 1RB	Front	0.412	0.018	0.430
B71 50RB	Front	0.382	0.018	0.400	

PCT + WLAN U-NII					
WWAN Band		Exposure Position	Max SAR (W/kg)		Summed SAR
			PCT	WLAN U-NII	(W/kg)
WCDMA	Band II	Front	0.983	0.009	0.992
	Band IV	Front	0.517	0.009	0.526
	Band V	Front	0.236	0.009	0.245
LTE	B2 1RB	Front	1.363	0.009	1.372
	B2 50RB	Front	0.923	0.009	0.932
	B4 1RB	Front	0.586	0.009	0.595
	B4 50RB	Front	0.670	0.009	0.679
	B5 1RB	Front	0.223	0.009	0.232
	B5 25RB	Front	0.193	0.009	0.202
	B12 1RB	Front	0.246	0.009	0.255
	B12 25RB	Front	0.212	0.009	0.221
	B13 1RB	Front	0.289	0.009	0.298
	B13 25RB	Front	0.246	0.009	0.255
	B17 1RB	Front	0.418	0.009	0.427
	B17 25RB	Front	0.375	0.009	0.384
	B66 1RB	Front	0.684	0.009	0.693
	B66 50RB	Front	0.578	0.009	0.587
	B71 1RB	Front	0.412	0.009	0.421
B71 50RB	Front	0.382	0.009	0.391	

PCT + BT					
WWAN Band		Exposure Position	Max SAR (W/kg)		Summed SAR
			PCT	BT	(W/kg)
WCDMA	Band II	Front	0.983	0.083	1.066
	Band IV	Front	0.517	0.083	0.600
	Band V	Front	0.236	0.083	0.319
LTE	B2 1RB	Front	1.363	0.083	1.446
	B2 50RB	Front	0.923	0.083	1.006
	B4 1RB	Front	0.586	0.083	0.669
	B4 50RB	Front	0.670	0.083	0.753
	B5 1RB	Front	0.223	0.083	0.306
	B5 25RB	Front	0.193	0.083	0.276
	B12 1RB	Front	0.246	0.083	0.329
	B12 25RB	Front	0.212	0.083	0.295
	B13 1RB	Front	0.289	0.083	0.372
	B13 25RB	Front	0.246	0.083	0.329
	B17 1RB	Front	0.418	0.083	0.501
	B17 25RB	Front	0.375	0.083	0.458
	B66 1RB	Front	0.684	0.083	0.767
	B66 50RB	Front	0.578	0.083	0.661
	B71 1RB	Front	0.412	0.083	0.495
B71 50RB	Front	0.382	0.083	0.465	

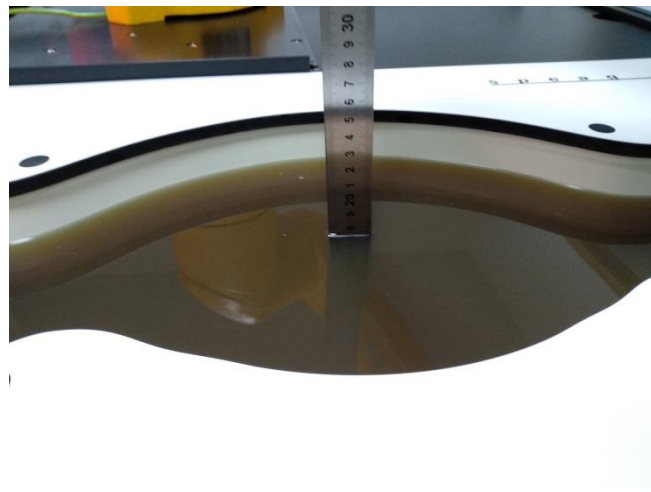
16.2. Body

PCT + DTS					
WWAN Band		Exposure Position	Max SAR (W/kg)		Summed SAR
			PCT	DTS	(W/kg)
WCDMA	Band II	Limbs	1.146	0.029	1.175
	Band IV	Limbs	1.049	0.029	1.078
	Band V	Limbs	0.242	0.029	0.271
LTE	B2 1RB	Limbs	1.807	0.029	1.836
	B2 50RB	Limbs	1.484	0.029	1.513
	B4 1RB	Limbs	1.037	0.029	1.066
	B4 50RB	Limbs	1.291	0.029	1.320
	B5 1RB	Limbs	0.239	0.029	0.268
	B5 25RB	Limbs	0.210	0.029	0.239
	B12 1RB	Limbs	0.246	0.029	0.275
	B12 25RB	Limbs	0.221	0.029	0.250
	B13 1RB	Limbs	0.248	0.029	0.277
	B13 25RB	Limbs	0.234	0.029	0.263
	B17 1RB	Limbs	0.295	0.029	0.324
	B17 25RB	Limbs	0.269	0.029	0.298
	B66 1RB	Limbs	1.190	0.029	1.219
	B66 50RB	Limbs	0.872	0.029	0.901
	B71 1RB	Limbs	0.270	0.029	0.299
B71 50RB	Limbs	0.239	0.029	0.268	

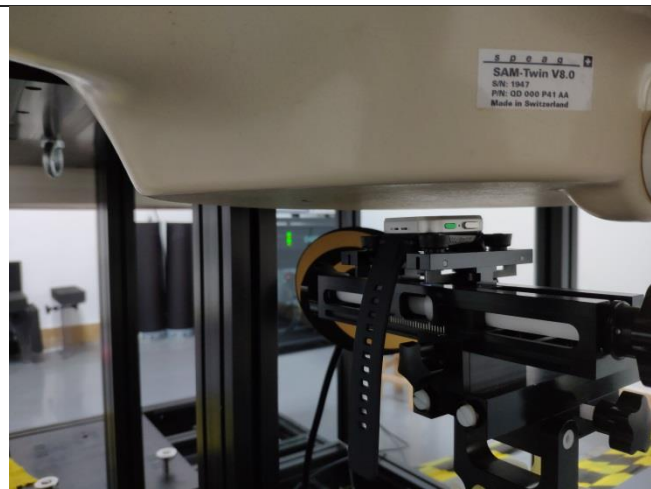
PCT + WLAN U-NII					
WWAN Band		Exposure Position	Max SAR (W/kg)		Summed SAR
			PCT	WLAN U-NII	(W/kg)
WCDMA	Band II	Rear	1.146	0.031	1.177
	Band IV	Rear	1.049	0.031	1.080
	Band V	Rear	0.242	0.031	0.273
LTE	B2 1RB	Rear	1.807	0.031	1.838
	B2 50RB	Rear	1.484	0.031	1.515
	B4 1RB	Rear	1.037	0.031	1.068
	B4 50RB	Rear	1.291	0.031	1.322
	B5 1RB	Rear	0.239	0.031	0.270
	B5 25RB	Rear	0.210	0.031	0.241
	B12 1RB	Rear	0.246	0.031	0.277
	B12 25RB	Rear	0.221	0.031	0.252
	B13 1RB	Rear	0.248	0.031	0.279
	B13 25RB	Rear	0.234	0.031	0.265
	B17 1RB	Rear	0.295	0.031	0.326
	B17 25RB	Rear	0.269	0.031	0.300
	B66 1RB	Rear	1.190	0.031	1.221
	B66 50RB	Rear	0.872	0.031	0.903
	B71 1RB	Rear	0.270	0.031	0.301
B71 50RB	Rear	0.239	0.031	0.270	

PCT + BT					
WWAN Band		Exposure Position	Max SAR (W/kg)		Summed SAR
			PCT	BT	(W/kg)
WCDMA	Band II	Limbs	1.146	0.066	1.212
	Band IV	Limbs	1.049	0.066	1.115
	Band V	Limbs	0.242	0.066	0.308
LTE	B2 1RB	Limbs	1.807	0.066	1.873
	B2 50RB	Limbs	1.484	0.066	1.550
	B4 1RB	Limbs	1.037	0.066	1.103
	B4 50RB	Limbs	1.291	0.066	1.357
	B5 1RB	Limbs	0.239	0.066	0.305
	B5 25RB	Limbs	0.210	0.066	0.276
	B12 1RB	Limbs	0.246	0.066	0.312
	B12 25RB	Limbs	0.221	0.066	0.287
	B13 1RB	Limbs	0.248	0.066	0.314
	B13 25RB	Limbs	0.234	0.066	0.300
	B17 1RB	Limbs	0.295	0.066	0.361
	B17 25RB	Limbs	0.269	0.066	0.335
	B66 1RB	Limbs	1.190	0.066	1.256
	B66 50RB	Limbs	0.872	0.066	0.938
	B71 1RB	Limbs	0.270	0.066	0.336
B71 50RB	Limbs	0.239	0.066	0.305	

17. TestSetup Photos



Liquid depth in the Body phantom



Front (10mm)



Limb (0mm)

18. External and Internal Photos of the EUT

Please reference to the report No.: CHTEW21110239

-----End of Report-----