

Ultraloq U-Bolt User Guide

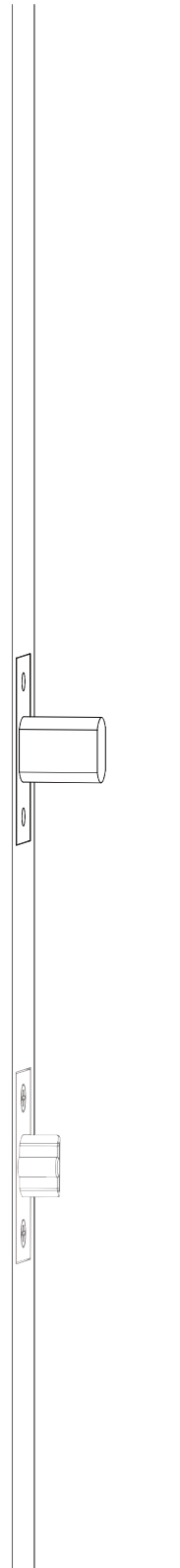
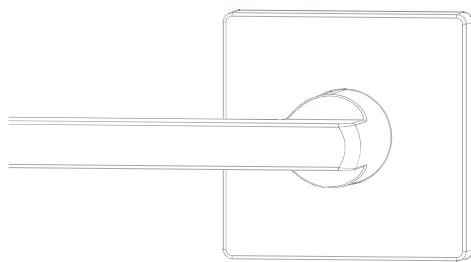
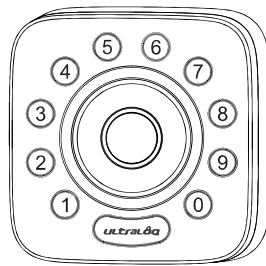
Applicant : U-tec Group Inc.
Address : 44292 Fremont Blvd, Fremont, CA 94538, USA
Manufacturer : U-tec Group Inc.
Address : 44292 Fremont Blvd, Fremont, CA 94538, USA
Trademark : 



Ultraoq U-Bolt

Installation and User Guide

(V1.2)



Ultraoq

Important Notes

- Do not use a power drill for installation.
- Install and test the lock with the door open to avoid being locked out.
- Please read all the instructions before contacting customer support.
- Please contact customer support before returning the product to the store.
- DO NOT install the batteries before installing the lock!
Follow the instructions in sequential order!
- This lock is designed for the following operating temperatures:
Outside Lock Body: -2.2°F(-19°C) to 158°F (70°C)
Inside Lock Body: 14°F (-10°C) to 131°F (55°C)

Statements

Visit www.u-tec.com for specific warranty details, privacy policy and limitations.

To ensure the best service, please register your account at <https://www.u-tec.com/register.html>

Need Help?

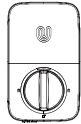
For technical documents and more

Please visit www.u-tec.com/support

Email: support@u-tec.com

Packing List

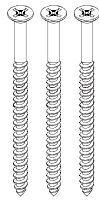
Interior
Assembly



Strike



Screw A



Screw D



Screwdriver



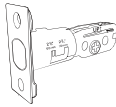
Reset Needle



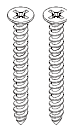
Exterior
Assembly



Bolt



Screw B



Screw E



User Guide



Bridge



Optional

Interior Assembly
Mounting Plate



Backup Key



Screw C

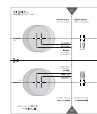


AA Alkaline Batteries



May not be included
for some regions

Drill Template
(Last Page in this manual)



Installation Guide

Installation Video



Please scan this QR code to watch the easy step by step installation video before attempting to install UltraLoq U-Bolt.

1. Preparing Door

Check the door's dimensions.

Step 1

Measure to confirm that the door is between $1\frac{5}{16}'' \sim 2''$ (33 mm-50 mm) thick.

Step 2

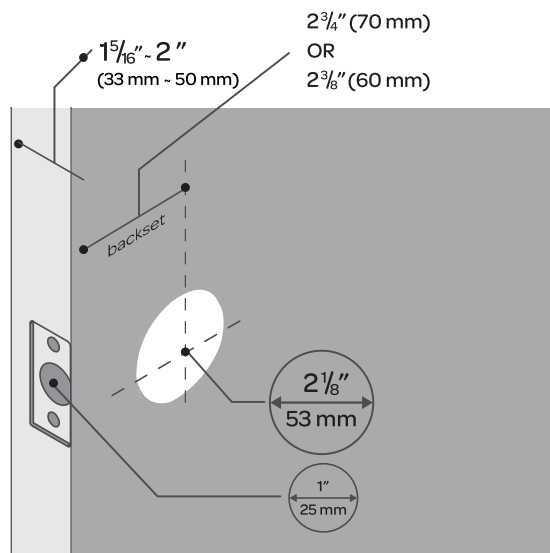
Measure to confirm that the diameter of the hole is $2\frac{1}{8}''$ (53 mm).

Step 3

Measure to confirm that the backset is either $2\frac{3}{8}''$ or $2\frac{3}{4}''$ (60 mm or 70 mm).

Step 4

Measure to confirm that the diameter of the hole in the door edge is $1''$ (25 mm).



If you have a new door, please drill the holes according to Drill Template, which is on the last page of this manual.

2. Installing Bolt and Strike

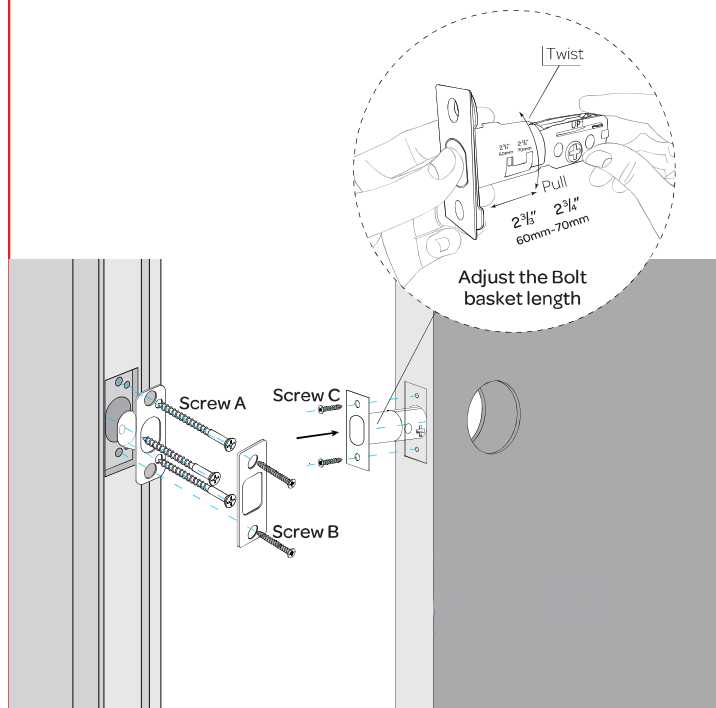
Step 1

Install Bolt into the door. Make sure the UP ↑.

Note: Bolt is set for $2\frac{3}{8}$ " backset initially. It can be adjusted to $2\frac{3}{4}$ " if needed.

Step 2

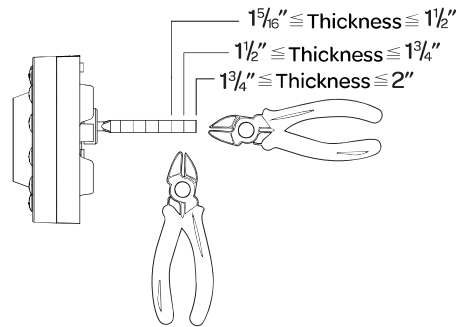
Install Strike into the door frame.



3. Installing Exterior Assembly

Step 1

Carefully break off cylinder tailpiece at required mark for your door thickness.



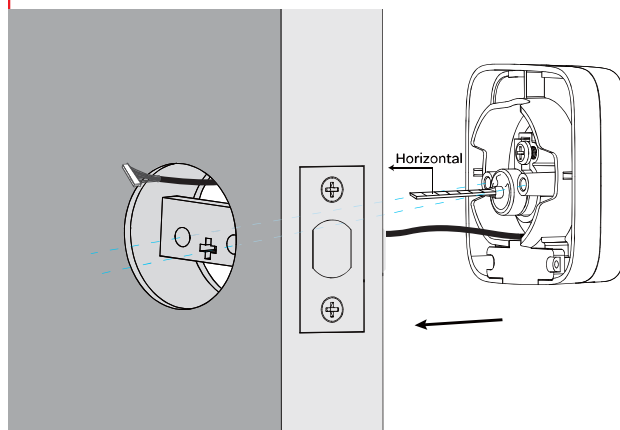
Caution: Use two pairs of pliers as shown or tailpiece will be damaged

Step 2

Keep Bolt retracted and the cylinder tailpiece horizontal. Install Exterior Assembly. Please do not insert the mechanical key.

Step 3

Align its two sticks with two holes on Bolt. The cable goes through the hole above Bolt.



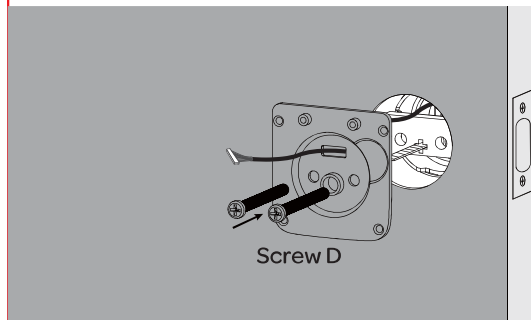
4. Installing Interior Assembly Mounting Plate

Step 1

Route the cable through the hole on Interior Assembly Mounting Plate.

Step 2

Secure Interior Assembly Mounting Plate to Exterior Assembly using Screws D.



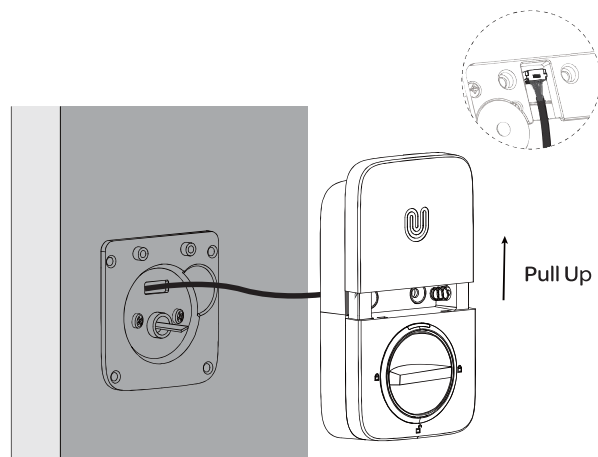
5. Installing Interior Assembly

Step 1

Remove the battery cover of the Interior Assembly.

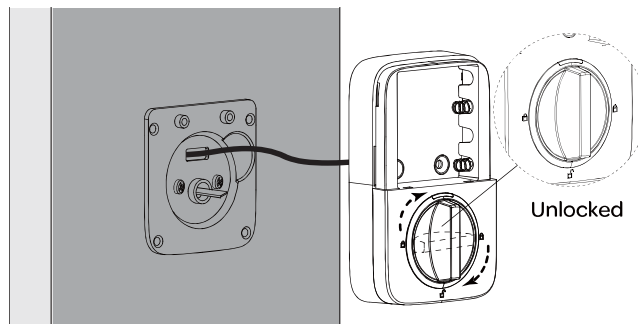
Step 2

Insert the connector of the cable to the socket on Interior Assembly. Press the connector in firmly until it is completely seated.



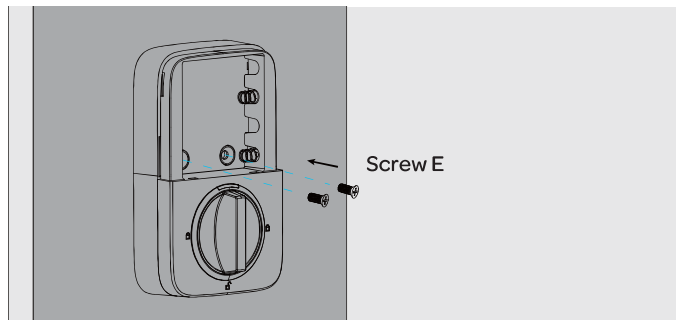
Step 3

Rotate the knob and keep it in a vertical position to stay unlocked.



Step 4

Attach Interior Assembly to Mounting Plate and tighten 2 Screws E.

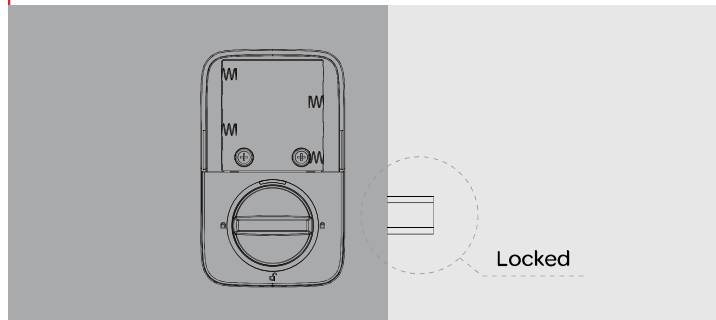


6. Installing the Batteries and Performing the Door Handing Process

This step will teach your lock the orientation of your door and is crucial to lock operation.

Step 1

Rotate the knob and keep it in a horizontal position to stay locked.



Step 2

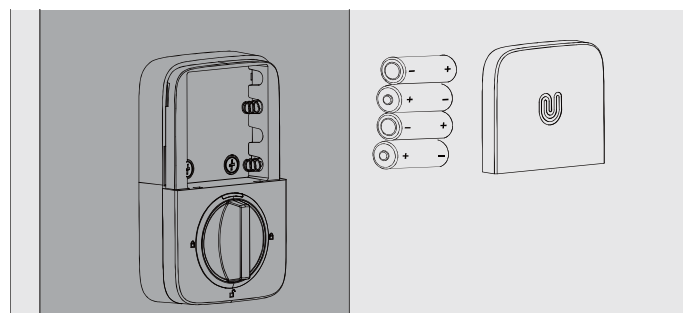
Insert 4 AA Alkaline Batteries.

Step 3

After a few seconds, Bolt will retract and extend on its own to learn the orientation of the door. This is called the door handing process, and it is crucial to lock operation.

Step 4

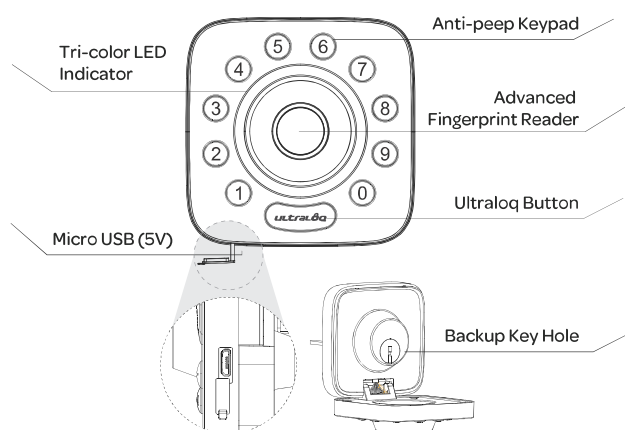
Install battery cover.



User Guide

1. Product Overview

1.1 Exterior



Anti-peep Keypad

Used to enter the code and unlock from outside.

Advanced Fingerprint Reader

Used to verify your finger and unlock from the outside.

Backup Key Hole

Used to insert the key to unlock in emergency situations.

Micro USB (5V)

Used to connect power bank to activate the lock when battery runs out.

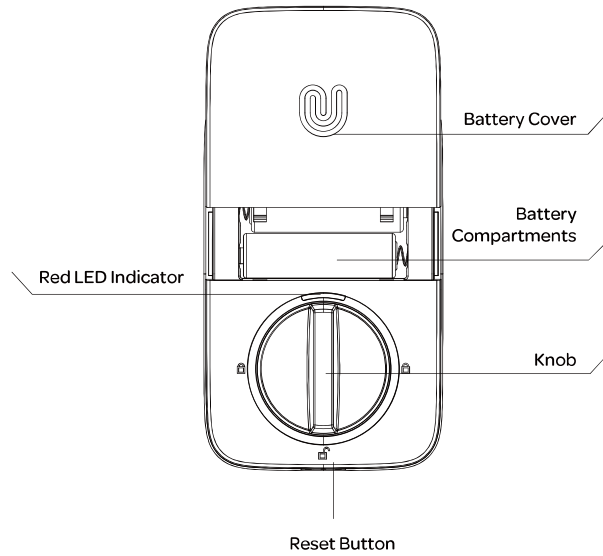
Tri-color LED Indicator

Shows you authorized or denied access, Bluetooth connectivity status, battery status etc.

Ultraloq Button

Used to lock from the outside, illuminate the keypad for code entry and confirm previous operation.

1.2 Interior



Reset Button

Used to reset the lock to Factory Default settings.

Battery Compartments

Used to insert 4 AA alkaline batteries.

Battery Cover

Used to cover batteries and product label.

Note: A Quick Guide is printed inside the battery cover.

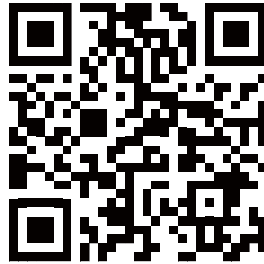
Knob

Used to unlock and lock the door from inside.

Red LED

Turns on when door is unlocked.

2. Lock Setup



Scan QR code to download the App



Step 1

Scan above QR code to download the App, or search "U-tec" in App Store (iOS) and Google Play (Android).

Step 2

Open the App, register U-tec account and log in the account.

Step 3

Make sure the lock is in Factory Default Mode. Turn on Bluetooth on your smartphone, stay near the lock (within 10 feet / 3 meters) and search the lock in the App.

Step 4

Pair the lock in the App and start to use it.

Note: Please refer to the guide in U-tec App for more information.

DON'T WANT TO USE THE APP?

Please go to page 16 for programming guide for Standalone Mode.

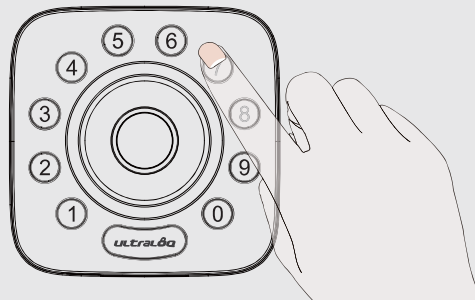
3. Using Your Lock

3.1 Unlock From Outside

- **User Code**

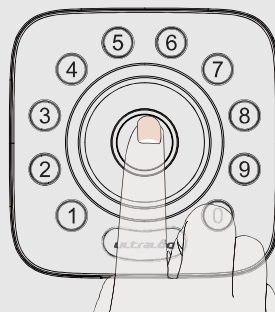
Enter 4-8 digit code and press UltraLoq Button to unlock .

Note: You can press UltraLoq Button to turn on Keypad backlight.



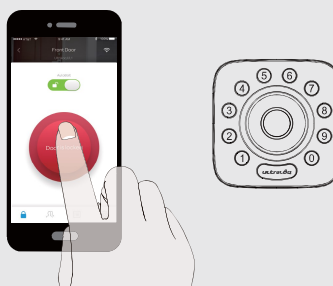
- **Fingerprint**

Place your finger on Fingerprint Reader to unlock.



- **Smartphone**

Use your smartphone to unlock. Please refer to the guide in U-tec App.



3.2 Lock From Outside

Press UltraLoq Button to lock manually.
Enable Auto Lock feature and the lock will relock automatically.

3.3 Unlock From Inside

Rotate the knob to a vertical position to unlock.

3.4 Reset the Lock

Press and hold the Reset Button with the Reset Needle for 5 seconds until you hear one long beep and two short beeps.

3.5 Replace Batteries

Please use 4 high-quality alkaline AA batteries for replacement when the battery is dead.

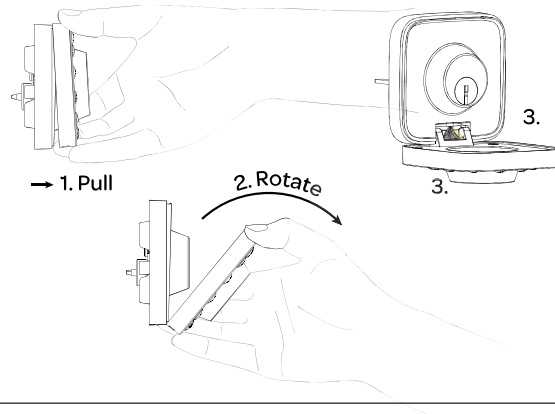
3.6 5V Emergency Power

Micro USB interface is used to connect regular 5V power bank to activate the lock in case the battery is dead.

3.7 Emergency Key Override

Emergency Key Override can be used when the battery is dead.


Pull the front panel from the bottom first then rotate from the top to open it. You can see Backup Key Hole inside. Insert the key and rotate to unlock, just like any lock.



Important Note

Please keep at least one key in secure location outside of your place.

3.8 Enable Or Disable Auto Lock

Press  then verify your finger, Auto Lock feature can be disabled or enabled. This can also be set in U-tec App and Auto Lock timing can be programmed between 10 seconds to 5 minutes. Factory Default timing is 30 seconds.

3.9 Anti-peep Keypad

The lock supports up to 16-digit Vague Code. Just enter any 16-digit code, as long as a correct code is included in what you entered, you can open the door.

Example
User Code: 123456

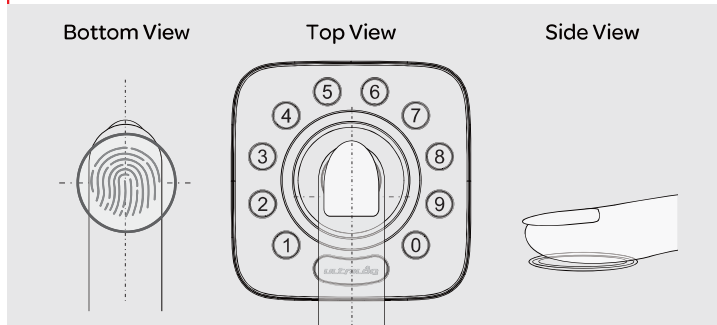
Vague Code

1: 1 2 3 4 5 6 X X X X X X

2: X X X X X X 1 2 3 4 5 6

3: X X X 1 2 3 4 5 6 X X X

3.10 Place Finger



- 1. Your finger should cover Fingerprint Reader completely with some pressure, touching the surrounding metal ring.**
- 2. Make sure that your finger and Fingerprint Reader are clean and dry. For Fingerprint Reader, use a clean, lint-free cloth to wipe off any dirt or debris.**
- 3. While scanning your finger, you shouldn't tap too quickly or move your finger around.**
- 4. If you have trouble enrolling one finger, try another.**

4. Standalone Mode Programming Guide




It is recommended to use U-tec App to program your lock. If you don't have a smartphone or don't want to use the App, you can use the programming instructions below.

Warning



Standalone Mode is NOT available after the lock is registered in App! Please reset the lock to Factory Default Mode first to program your lock in Standalone Mode.



4.1 Add Admin Code in Standalone Mode

Admin Code must be created first prior to any other programming. Only one Admin Code is available.



Operation	Indicator
Hold  for 3 sec	2 beeps with flashing green light
↓	
Enter 4-8 digits Admin Code and press 	1 beep with green light, then flashing green light
↓	
Enter the Admin Code again and press 	2 beeps with green light
↓	
Success	All lights off

4.2 Add User Code in Standalone Mode

Operation	Indicator
Hold  for 3 sec	2 beeps with flashing blue light
↓	
Enter 4-8 digits Admin Code and press 	2 beeps with green light, then steady blue light
↓	

Enter 4-8 digits User Code and press 	1 beep with green light, then steady blue light
↓	
Enter the User Code again and press 	2 beeps with green light
↓	
Success	All lights off

4.3 Add Fingerprint in Standalone Mode

Operation	Indicator
Hold  for 3 sec	2 beeps with flashing blue light
↓	
Enter 4-8 digits Admin Code and press 	2 beeps with green light, then steady blue light
↓	
Press the finger for 3 sec	4 beeps with green light
↓	
Success	All lights off

4.4 Delete Admin and User

Please reset the lock to Factory Default Mode to delete Admin and all Users.

FAQ

1. How to reset U-Bolt?

Please note all data will be erased if you reset U-Bolt to factory default.

If you are using U-tec App as Owner or Admin, please click "Delete and Reset" to remove the lock from your U-tec Account, then use a paper clip to push the reset button (at the bottom of Interior Assembly) for around 3 seconds until you hear one long beep and two short beeps.

2. How to control U-Bolt remotely?

U-Bolt is a Bluetooth enabled smart lock. You can pair the optional UltraLoq Bridge WiFi adaptor with U-Bolt to control it remotely via U-tec App.

3. What if I lost the paired smartphone?

Please go to <https://www.u-tec.com/myutec.html> or login U-tec App via another smartphone to change your U-tec Account password.

4. How to adjust the lock orientation of U-Bolt?

The lock orientation must be adjusted after installation to ensure U-Bolt works properly.

Solution 1. Adjust the lock orientation on the lock. Go to page 8 for details.

Solution 2. Adjust the lock orientation via U-tec App.

5. How can I unlock U-Bolt if battery runs out?

There will be low battery alert on the lock and App when battery is low. Red LED will flash 3 times along with 3 beeps when the lock is activated. Please replace batteries.

Solution 1. Use the backup key to unlock.

Solution 2. Connect a 5V power bank to activate the lock temporarily.

FAQ

6. What's the difference between Owner, Admin, Normal User and Temporary User?

Owner is the person who owns U-Bolt and registers it in U-tec App originally. Owner has all privileges.

Admin can always unlock via fingerprint, code or App. Admin can add or delete Admin and Users, control all lock settings and view logs.

Normal User can always unlock via fingerprint, code or App.

Temporary User has limited access within specific time range.

7. Does U-Bolt work with accessories such as bolt from third party?

It is recommended to use the original accessories for best performance and stability.

8. What is the fingerprint and code capacity for U-Bolt?

U-Bolt supports maximum 100 users and each user can register 2 fingerprints and 1 code.

9. What is the log capacity for U-Bolt?

U-Bolt supports maximum 1000 logs. The latest log will replace the oldest one once log is full.



ultralq

© 2018 U-tec Group Inc.
U-tec and Ultraloq brands and products are
trademarked and protected under law in the
United States. Unauthorized use is prohibited.
Ultraloq is sub-brand of U-tec Group Inc.

This equipment has been tested and found to comply with the limits for a Class B digital device, pursuant to part 15 of the FCC Rules. These limits are designed to provide reasonable protection against harmful interference in a residential installation. This equipment generates, uses and can radiate radio frequency energy and, if not installed and used in accordance with the instructions, may cause harmful interference to radio communications. However, there is no guarantee that interference will not occur in a particular installation. If this equipment does cause harmful interference to radio or television reception, which can be determined by turning the equipment off and on, the user is encouraged to try to correct the interference by one or more of the following measures:

- Reorient or relocate the receiving antenna.
- Increase the separation between the equipment and receiver.
- Connect the equipment into an outlet on a circuit different from that to which the receiver is connected.
- Consult the dealer or an experienced radio/TV technician for help.

Caution: Any changes or modifications to this device not explicitly approved by manufacturer could void your authority to operate this equipment.

This device complies with part 15 of the FCC Rules. Operation is subject to the following two conditions: (1) This device may not cause harmful interference, and (2) this device must accept any interference received, including interference that may cause undesired operation.

This equipment complies with FCC radiation exposure limits set forth for an uncontrolled environment.