

LATCH 5 FINGERPRINT

Smart Fingerprint Lock

User Guide v1.0

Ultraoq Terms & Policies

Before using all Ultraoq products, please read all applicable terms, rules, policies and usage provisions found at www.u-tec.com/company/privacy. By using your Ultraoq, you agree to be bound by the U-tec Privacy Policy.

Need help?

To get help or learn more <https://support.u-tec.com>



Exterior

- Low battery
- Communication
- 0 - 9** Numbers
- Back Enter

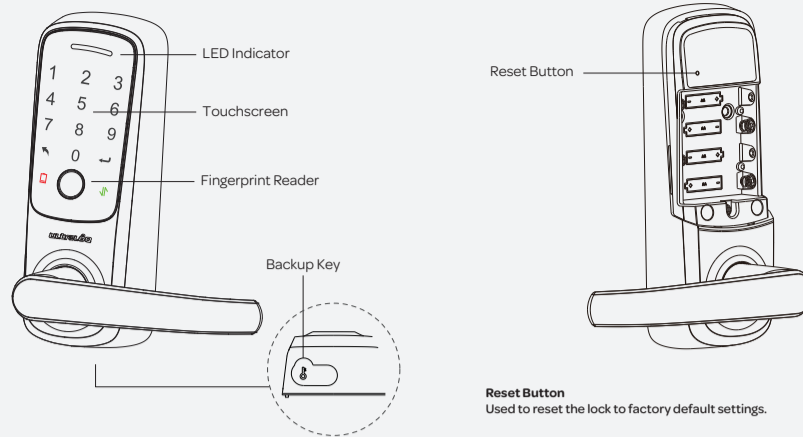
LED Indicator
Shows you authorized or denied access.

Touchscreen
Used to enter the code and unlock from the outside.

Fingerprint Reader
Read Fingerprint signals and unlock from the outside.

Backup Key Hole
Used to insert the key to unlock from outside.

Interior



Reset Button
Used to reset the lock to factory default settings.

1 Add Lock to U-tec App

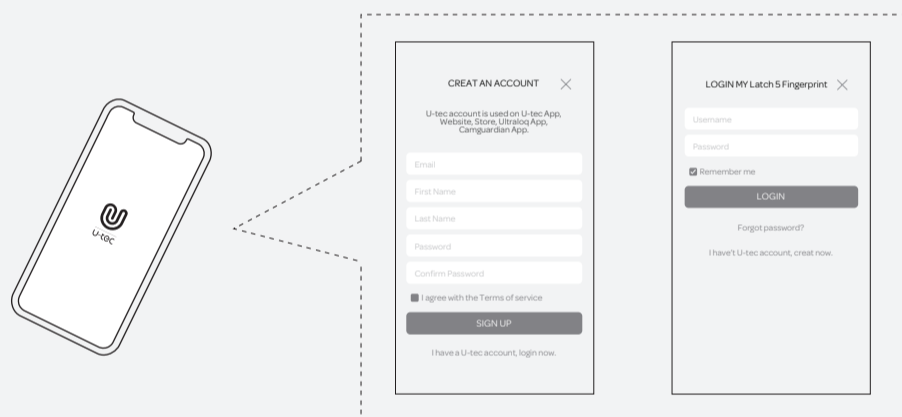
1 Search on app store



2 Download App

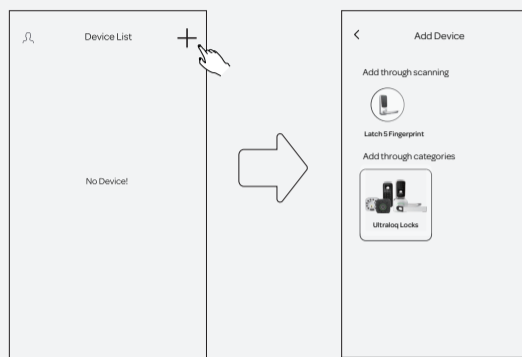


3 Create Account



2 Add a New Device and Add a New User to the Lock

1 Add the lock to the App through two options.



Options 1 Add through Scanning

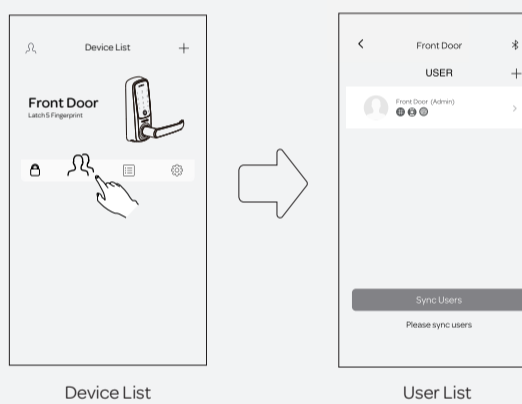
- Step 1. Turn on the GPS and Bluetooth on your smart phone
- Step 2. Select the device that you want to add in the scanning list
- Step 3. Adding the device by following the instructions in the App

Options 2 Add through Categories

- Step 1. Select Latch5 Fingerprint
- Step 2. Select the device with strongest signal strength
- Step 3. Create admin code
- Step 4. Name the lock

Bluetooth and GPS should be turned on in your smart phone to enable this feature.

2 Overall Process for Adding a New User



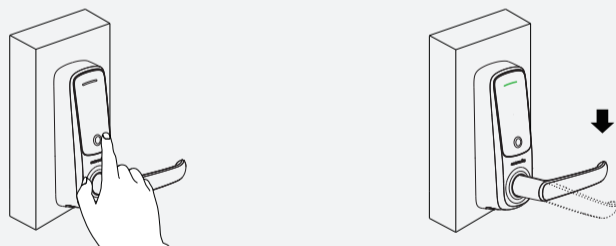
Set three different ways to unlock the door when add a new user

- a. Add Fingerprint
- b. Add Code
- c. Add the User's Email Account

Please follow more detailed instructions in the App.

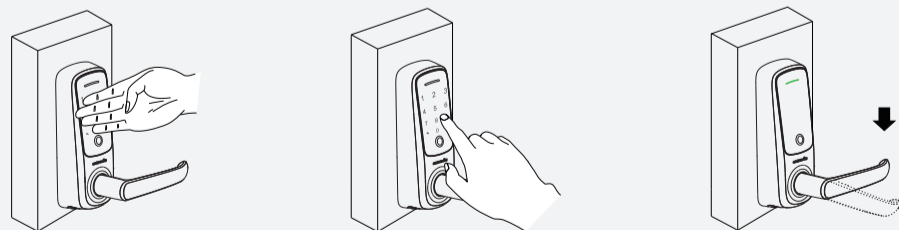
3 Operate the Lock

1 Unlock with Fingerprint



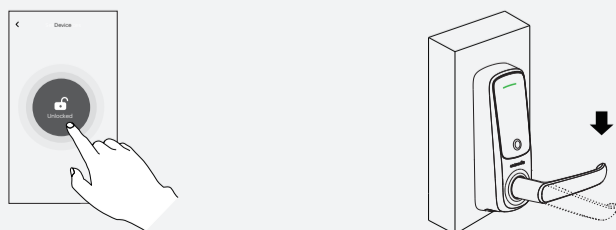
- 2a. Touch the center of the touch screen with registered Fingerprint.
- 2b. Turn down the handle to open the door.

2 Unlock with Code



- 1a. Touch the lock with the back of your hand to activate the lock.
- 1b. Enter the 4-8 digit code and press the , the LED will turn green if the code is correct.
- 1c. Turn down the handle to open the door.

3 Unlock with App



- 3a. Connect the lock with U-tec App and tap the Unlock button.
- 3b. Turn down the handle to open the door.

4 FAQ

Q 1.Can't Unlock by inside handle after installation. How to Fix?

A Please check the thickness of your door. The thickness should be between 1-3/8" to 1-3/4"(35 mm - 44mm). Please install the spring if the door thickness is over 1.65"(42mm). Don't forget plug in the spindle. For thicker doors between 2" to 2-3/4"(51mm -70mm), please order the Ultraoq Thick Door Kit on our official online store. <https://support.u-tec.com>

Q 2.How to reset the Latch 5 Fingerprint?

A Please note all data will be erased if you reset Latch 5 Fingerprint to factory default settings. If you are using the U-tec App as Owner, please click "Delete and Reset" to remove the lock from your U-tec Account, then use the Reset Needle to push the Reset Button (above the batteries in the Interior Assembly) until you hear one long beep and two short beeps.

Q 3.What if I lost the paired smartphone?

A Please go to www.u-tec.com/myutec.html or login U-tec App via another smartphone to change your U-tec account password.

Q 4.How can I unlock the Latch 5 Fingerprint if the battery runs out?

A The low battery indicator light will be red when the batteries are gonging to be running out. The backup mechanical keys work always even when the batteries go dead.

Q 5.What is the log capacity for the Latch 5 Fingerprint?

A Latch 5 Fingerprint supports maximum 1000 logs. The latest log will replace the oldest one once the log is full.

Q 6.Does the Latch 5 Fingerprint work with accessories such as latch from third parties?

A It is recommended to use the original accessories for best performance and stability.

If you come to any other questions, please don't hesitate to visit our official support website <https://support.u-tec.com> to get more help.

LATCH 5 FINGERPRINT

Cerradura de Huella Digital Inteligente

Guía de Uso v1.0

Términos y Políticas de Ultralock

Antes de usar todos los productos Ultralock, por favor lea todos los términos, reglas, políticas y disposiciones de uso aplicables que se encuentran en www.u-tec.com/company/privacy. Al utilizar el Ultralock, se da por enterado que acepta la Política de Privacidad de U-tec.

¿Necesita ayuda?

Para obtener soporte o saber más <https://support.u-tec.com>



Exterior

- Batería baja
- Comunicación
- 0 - 9 Números
- Volver Entrar

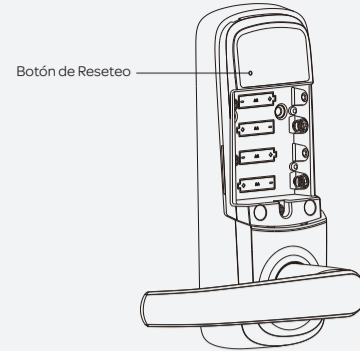
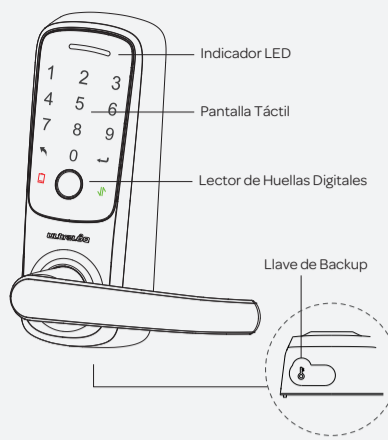
Indicador LED muestra el estado de acceso (autorizado o rechazado)

Pantalla Táctil
Se usa para entrar el código y desbloquear desde exterior.

Lector de Huellas Digitales
Leer huellas digitales y desbloquear desde fuera.

Agujero de llave de backup
Se usa para insertar la llave para desbloquear en caso urgente.

Interior



Botón de Reseteo
Se usa para resetear la cerradura a ajustes predeterminados de fábrica.

1 Agregar Cerradura en la App U-tec

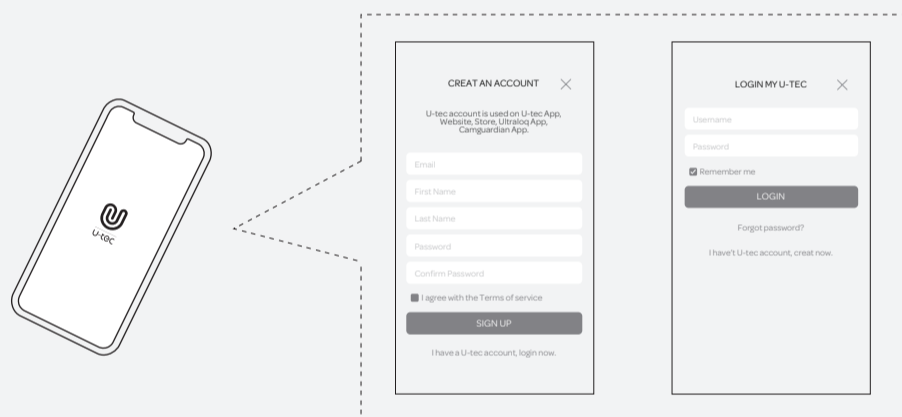
1 Buscar la App en App Store (iOS) y Google Play (Android)



2 Descargar la App

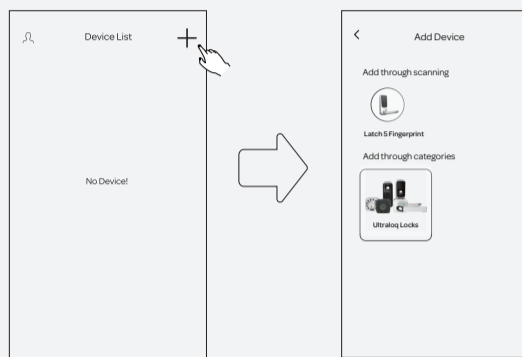


3 Crear cuenta



2 Agregar un nuevo dispositivo y un nuevo usuario a la cerradura

1 Agregar la cerradura a la App



Opciones 1 Agregar por escanear

- Paso 1. Active el GPS y Bluetooth en su smartphone
- Paso 2. Seleccione el dispositivo que quiera agregar en la lista de escaneo
- Paso 3. Agregue el dispositivo siguiendo las instrucciones en la App

Opciones 2 Agregar por categoría

- Paso 1. Seleccione Latch5 Fingerprint
- Paso 2. Seleccione el dispositivo que tenga la mejor señal
- Paso 3. Cree el código admin
- Paso 4. Renombre la cerradura

Bluetooth y GPS deben estar activados en su celular para habilitar esta función.

2 Proceso general para agregar un nuevo usuario



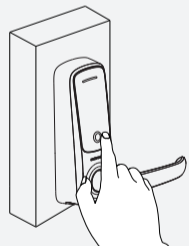
Configure tres formas diferentes de desbloquear la puerta al agregar un nuevo usuario

- a. Agregar huella digital
- b. Agregar Código
- c. Agregar cuenta de Email de usuario

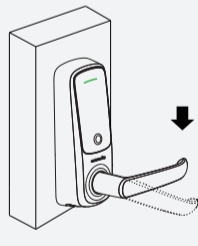
Por favor, siga las instrucciones más detalladas en la App.

3 Uso de la Cerradura

1 Desbloquear con Huella Digital

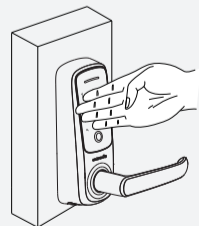


2a. Tocar el centro de la pantalla táctil con huella registrada.

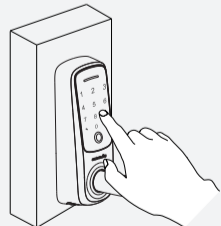


2b. Gire la manija para abrir la puerta.

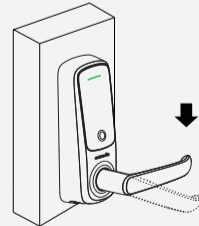
2 Desbloqueo con Código



1a. Toque la cerradura con el dorso de la mano para activar la cerradura..

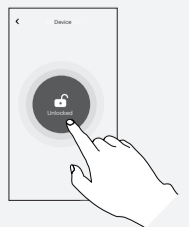


1b. Entre código de 4-8 dígitos y aprete el botón , la LED se pondrá verde si el código es correcto.

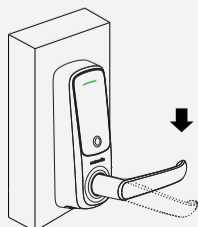


1c. Gire la manija para abrir la puerta.

3 Desbloqueo con App



3a. Conecte la cerradura con la App U-tec y pulse el botón Unlock.



3b. Gire la manija para abrir la puerta.

4 FAQ

- Q 1.No puedo desbloquear la cerradura por la manija interior después de la instalación, ¿cómo arreglarlo?**
A Por favor revise el grosor de la puerta, el cual debe estar entre 1-3/8" to 1-3/4"(35 mm - 44mm).Instale el resorte si el espesor de puerta supera 1.65"(42mm). No olvide enchufar el husillo. Para puertas de mayor grosor, de 2-3/8" a 2-3/4"(51mm-70mm), encargue el Ultralock Thick Door Kit en nuestra tienda oficial online <https://support.u-tec.com>
- Q 2.¿Cómo resetear Latch5 Fingerprint?**
A Por favor dese cuenta de que todos los datos se borrarán si resetea Latch 5 Fingerprint a ajuste predeterminado. Si está usando U-tec App como Dueño, por favor haga clic en "Eliminar y Resetear" para remover la cerradura desde su cuenta U-tec. Luego use la Llave para resetear pulsando el botón de reseteo (en el ensamble interior por encima de las baterías) hasta que se oigan un largo pitido y dos cortos.
- Q 3.¿Qué hago si pierdo el teléfono inteligente emparejado?**
A Por favor, visite www.u-tec.com/myutec.html o ingrese en U-tec App a través de otro teléfono inteligente para cambiar la contraseña de su cuenta U-tec.
- Q 4.¿Cómo puedo desbloquear el Latch 5 Fingerprint si las baterías se agotan?**
A La luz indicadora de batería baja destellará en rojo cuando las baterías estén a punto de agotarse. Las llaves mecánicas de backup siempre funcionan incluso cuando las baterías se agotan.
- Q 5.¿Cuál es la capacidad de registro del Latch 5 Fingerprint?**
A Latch 5 Fingerprint admite un máximo de 1000 registros. El registro más reciente reemplazará al más antiguo una vez que esté lleno.
- Q 6.¿Latch5 Fingerprint funciona con accesorios como Bolt de terceros?**
A Se recomienda utilizar los accesorios originales para un mejor rendimiento y estabilidad.

Si tiene cualquier pregunta, no dude en visitar nuestra página oficial de soporte <https://support.u-tec.com> para obtener ayuda.

FCC Warning:

This equipment has been tested and found to comply with the limits for a Class B digital device, pursuant to part 15 of the FCC Rules. These limits are designed to provide reasonable protection against harmful interference in a residential installation. This equipment generates, uses and can radiate radio frequency energy and, if not installed and used in accordance with the instructions, may cause harmful interference to radio communications. However, there is no guarantee that interference will not occur in a particular installation. If this equipment does cause harmful interference to radio or television reception, which can be determined by turning the equipment off and on, the user is encouraged to try to correct the interference by one or more of the following measures:

- Reorient or relocate the receiving antenna.
- Increase the separation between the equipment and receiver.
- Connect the equipment into an outlet on a circuit different from that to which the receiver is connected.
- Consult the dealer or an experienced radio/TV technician for help.

Caution: Any changes or modifications to this device not explicitly approved by manufacturer could void your authority to operate this equipment.

This device complies with part 15 of the FCC Rules. Operation is subject to the following two conditions: (1) This device may not cause harmful interference, and (2) this device must accept any interference received, including interference that may cause undesired operation.

The device has been evaluated to meet general RF exposure requirement. This equipment complies with FCC radiation exposure limits set forth for an uncontrolled environment.

This equipment should be installed and operated with minimum distance 20cm between the radiator & your body.

Changes or modifications not expressly approved by the party responsible for compliance could void your authority to operate the equipment.