



# 尚远科技（中国）有限公司

Sunnyway Technology (China) Co. Ltd.

## Antenna SPEC

Project Name: 5G ant

Working Band: 600~7225MHz

Type: Sector Glue Stick Antenna (External Detachable)

Sunnyway BOM:

SPEC-Type	Sunnyway P/N
<b>5G</b>	<b>SH19280IB56</b>

R&D	ME:	PM:	Confirm:
	RF:		

Shanghai Address: 3F, building 65, No. 421, Hong Cao Road, Xuhui District, Shanghai, PRC.

Shenzhen Address: Room 405, Jinke Building, No. 8 Qiongyu Road, Shenzhen, PRC.

Fuzhou Address: Room 205, Building 19, Zone A, Software Park, No. 89 Software Avenue, Gulou District, Fuzhou PRC.

Factory Address: 5th floor, No. 1 Zhongxincun Road, LongHu Industrial Zone, Shuikou Town, Huizhou City. PRC.

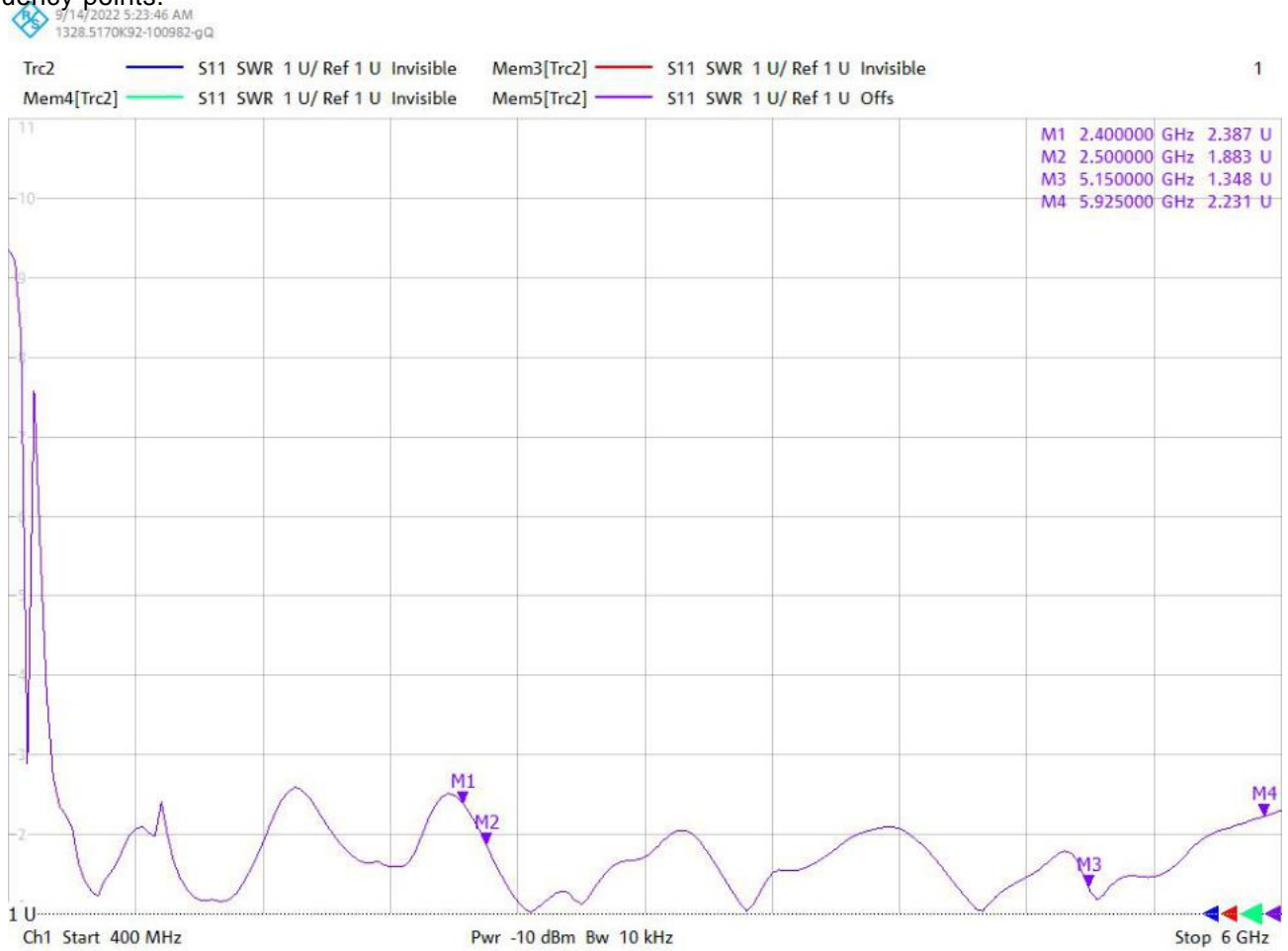
# 1. ELECTRICAL SPECIFICATIONS

## 1.1 S11 test

### S11 test method instructions

Test equipment: LNA(HP 8753E)

Test method: With a 50 ohm CABLE ,CABLE export from instrument testing port , After the calibration with calibration Key, connected to the SMA connector, Records the return loss and VSWR of the related frequency points.



Fre (MHz)	2400	2500	5150	5925
<b>VSWR</b>	2.9	1.8	1.6	2.2
<b>Eff (%)</b>	50.8	54.2	51.3	45.6
<b>Gain (dBi)</b>	2.6	1.3	3.1	4.0

## 1.2 CHAMBER TEST DATA

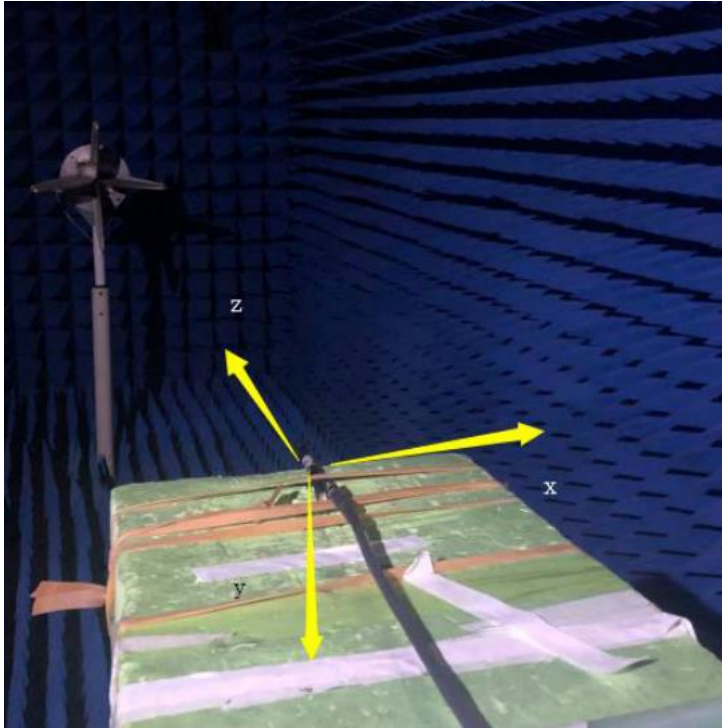
Test equipment

Test system: chamber

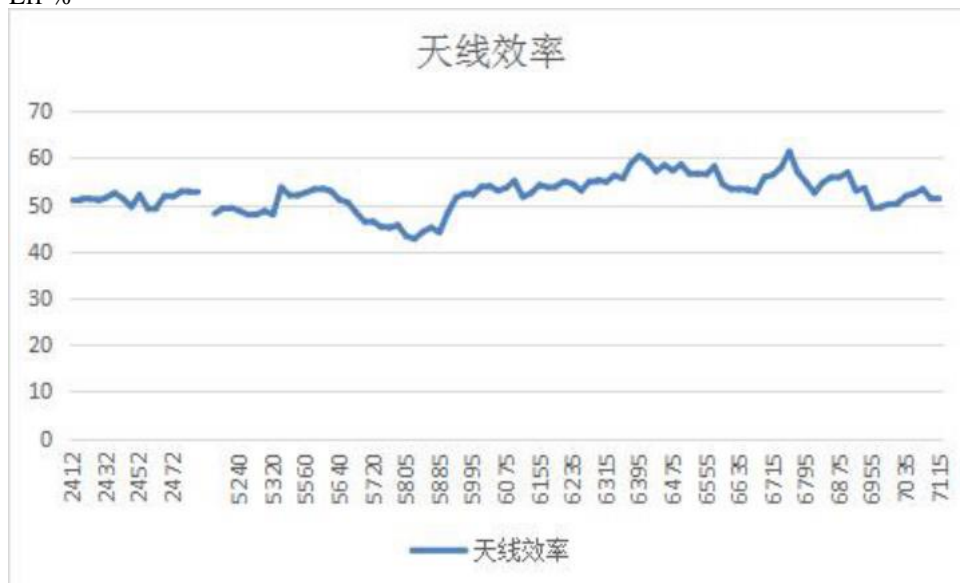
Test environment: the temperature of  $22\text{ }^{\circ}\text{C} + 3\text{ }^{\circ}\text{C}$ , humidity of 50% plus or minus 15%

Test equipment: to test passive status , use LNA Agilent E5062C

to test active status, use CMW500

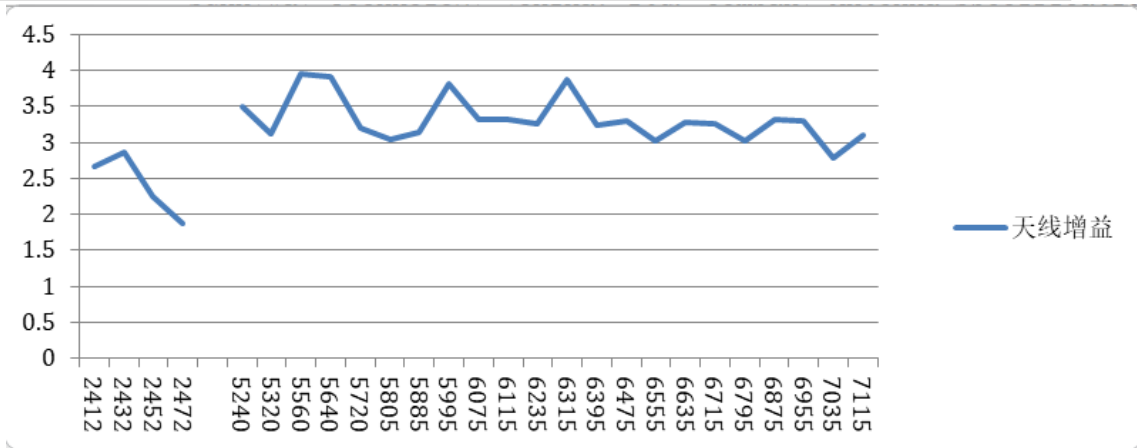


Eff %



Gain (dBi)

Sunnvay Technology (china) ltd. Company Antenna Specification



Frequency (MHz)	Efficiency (%)	Efficiency (dB)	Peak Gain (dBi)
2412	50.9	-2.93	2.66
2417	51.29	-2.9	2.97
2422	51.17	-2.91	2.45
2427	50.82	-2.94	2.47
2432	51.52	-2.88	2.87
2437	52.48	-2.8	2.49
2442	51.29	-2.9	2.36
2447	49.55	-3.05	2.43
2452	52.12	-2.83	2.25
2457	49.09	-3.09	2.00
2462	49.43	-3.06	2.31
2467	51.88	-2.85	1.91
2472	51.64	-2.87	1.87
2484	52.84	-2.77	1.47

Frequency (MHz)	Efficiency (%)	Efficiency (dB)	Peak Gain (dBi)
5180	48.08	-3.18	3.06
5200	49.2	-3.08	3.16
5220	49.32	-3.07	3.47
5240	48.64	-3.13	3.50
5260	47.86	-3.2	3.47
5280	47.86	-3.2	3.38
5300	48.64	-3.13	3.47
5320	47.86	-3.2	3.12

Sunnyway Technology (china) ltd. Company Antenna Specification

5500	53.7	-2.7	3.41
5520	52	-2.84	3.44
5540	52	-2.84	3.83
5560	52.6	-2.79	3.94
5580	53.33	-2.73	3.02
5600	53.46	-2.72	3.02
5620	52.84	-2.77	3.34
5640	51.05	-2.92	3.91
5660	50.47	-2.97	3.06
5680	48.31	-3.16	3.06
5700	46.34	-3.34	3.22
5720	46.45	-3.33	3.20
5745	45.19	-3.45	3.19
5765	44.98	-3.47	3.11
5785	45.6	-3.41	3.23
5805	43.25	-3.64	3.04
5825	42.66	-3.7	3.12
5845	44.16	-3.55	3.52
5865	45.08	-3.46	3.60
5885	44.06	-3.56	3.14

Frequency (MHz)	Efficiency	Efficiency (dB)	Peak Gain (dBi)
5935	-3.16	48.31	3.86
5955	-2.88	51.52	3.13
5975	-2.81	52.36	3.99
5995	-2.84	52	3.82
6015	-2.69	53.83	3.76
6035	-2.67	54.08	3.74
6055	-2.76	52.97	3.21
6075	-2.71	53.58	3.32
6095	-2.59	55.08	3.37
6115	-2.87	51.64	3.32
6135	-2.8	52.48	3.50
6155	-2.66	54.2	3.85
6175	-2.7	53.7	3.05
6195	-2.68	53.95	3.05
6215	-2.6	54.95	3.19
6235	-2.64	54.45	3.26

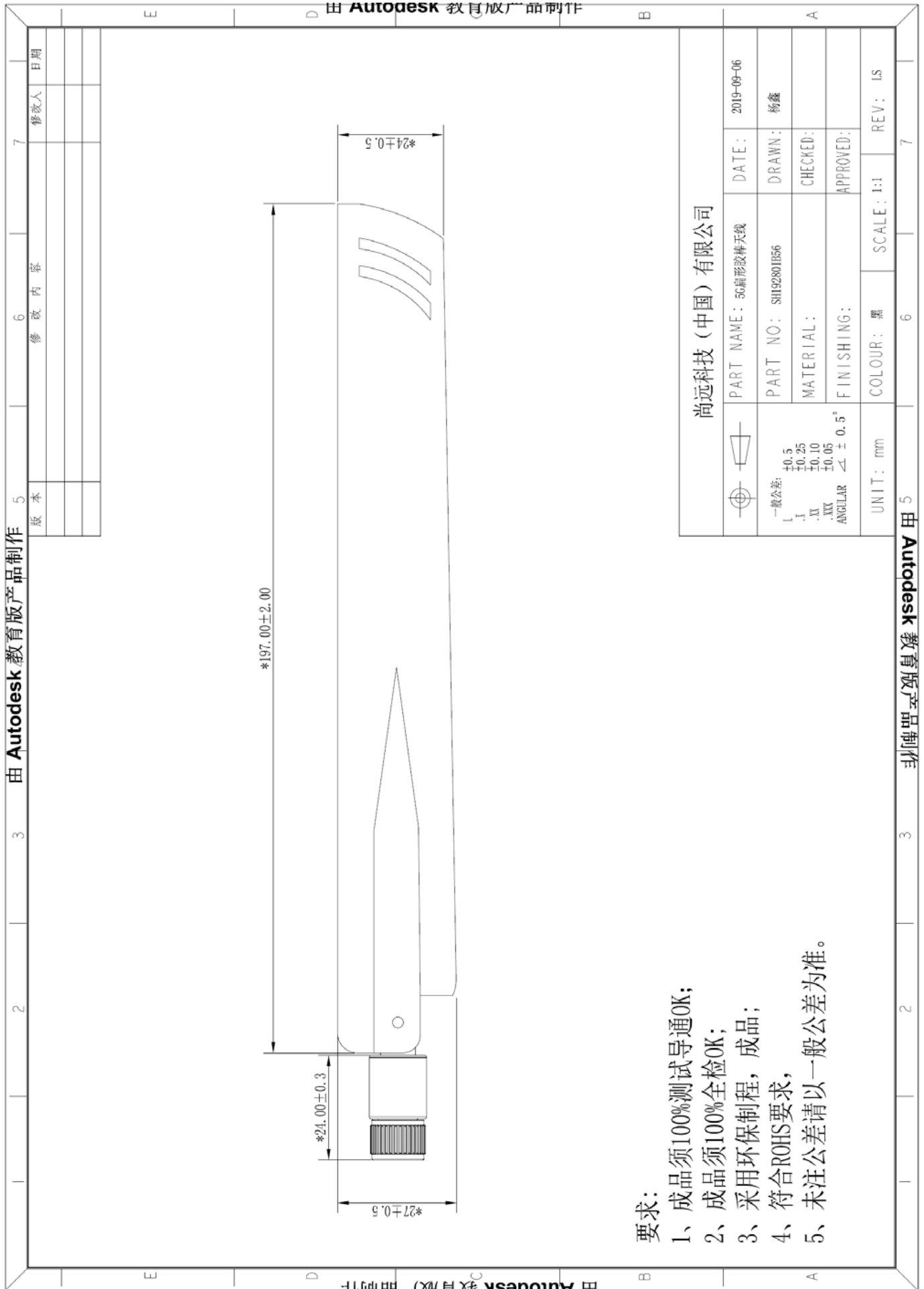
## Sunnyway Technology (china) ltd. Company Antenna Specification

6255	-2.76	52.97	3.33
6275	-2.6	54.95	3.57
6295	-2.57	55.34	3.88
6315	-2.61	54.83	3.82
6335	-2.5	56.23	3.05
6355	-2.55	55.59	3.14
6375	-2.3	58.88	3.14
6395	-2.18	60.53	3.24
6415	-2.27	59.29	3.20
6435	-2.43	57.15	3.23
6455	-2.33	58.48	3.23
6475	-2.42	57.28	3.29
6495	-2.32	58.61	3.22
6515	-2.47	56.62	3.04
6535	-2.47	56.62	3.95
6555	-2.49	56.36	3.02
6575	-2.35	58.21	3.06
6595	-2.65	54.33	3.76
6615	-2.73	53.33	3.40
6635	-2.73	53.33	3.27
6655	-2.76	52.97	3.22
6675	-2.79	52.6	3.24
6695	-2.53	55.85	3.32
6715	-2.49	56.36	3.26
6735	-2.37	57.94	3.27
6755	-2.12	61.38	3.46
6775	-2.45	56.89	3.29
6795	-2.61	54.83	3.03
6815	-2.8	52.48	3.93
6835	-2.62	54.7	3.94
6855	-2.53	55.85	3.74
6875	-2.53	55.85	3.32
6895	-2.45	56.89	3.55
6915	-2.76	52.97	3.82
6935	-2.71	53.58	3.22
6955	-3.07	49.32	3.48
6975	-3.05	49.55	3.30
6995	-3	50.12	3.56

7015	-2.98	50.35	2.48
7035	-2.85	51.88	2.79
7055	-2.81	52.36	2.86
7075	-2.73	53.33	2.98
7095	-2.9	51.29	2.75
7115	-2.93	50.93	3.09

## 2, STRUCTURAL DRAWINGS






**要求:**

- 1、成品须100%测试导通OK;
- 2、成品须100%全检OK;
- 3、采用环保制程, 成品;
- 4、符合ROHS要求,
- 5、未注公差请以一般公差为准。

**尚远科技 (中国) 有限公司**

 一般公差: I ±0.5 .I ±0.25 .IV ±0.10 .XV ±0.05 ANGULAR <math>\angle \pm 0.5^\circ</math>	PART NAME: 5G扇形胶棒天线	DATE: 2019-09-06
	PART NO: SH192801D56	DRAWN: 杨鑫
	MATERIAL:	CHECKED:
	FINISHING:	APPROVED:
UNIT: mm	COLOUR: 黑	SCALE: 1:1
	REV: 1S	IS