

SAFETY NOTE

- 1, FCC NOTE:
- This device complies with Part 15 of the FCC Rules. Operation is subject to the following two conditions:
(1) this device may not cause harmful interference, and
(2) this device must accept any interference received, including interference that may cause undesired operation.
- 2, The manufacturer is not responsible for any radio or tv interference caused by unauthorized modifications or change to this equipment. Such modifications or change could void the user’ s authority to operate the equipment.
- 3, This equipment has been tested and found to comply with the limits for a Class B digital device, pursuant to part 15 of the FCC Rules. These limits are designed to provide reasonable protection against harmful interferen- ce in a residential installation. This equipment generates, uses and can radiate radio frequency energy and, if not installed and used in accordance with the instructions, may cause harmful interference to radio communications. However, there is no guarantee that interference will not occur in a particular installation. If this equipment does cause harmful interference to radio or television recep- tion, which can be determined by turning the equipment off and on, the user is encouraged to try to correct the interference by one or more of the following measures:
— Reorient or relocate the receiving antenna.
— Increase the separation between the equipment and receiver.
— Connect the equipment into an outlet on a circuit different from that to which the receiver is connected.
— Consult the dealer or an experienced radio/TV techni- cian for help.
- 4, RF warning statement:
- To maintain compliance with FCC’ s RF exposure guideli- nes, this equipment should be installed and operated with a minimum distance of 20cm between the radiator and your body.



DC Tubular Motor-
DM35LE-3/28
Specification(A-02)



Product introduction

⚠ One motor maximum can store 10 channels, over 10 channels, if still need add new channels, it will be repeating covered last channel.



Functional features:

- Electronic Limit
 - Stall Protection
 - Jog & Tilt
 - Program Button
 - DC Power
 - Built-in Lithium Battery
 - Solar Charging
- Switch Direction
 - Built-in Receiver
 - Preferred Stop Position
 - Reset to Factor Mode
 - Memorized Setting
 - Quiet

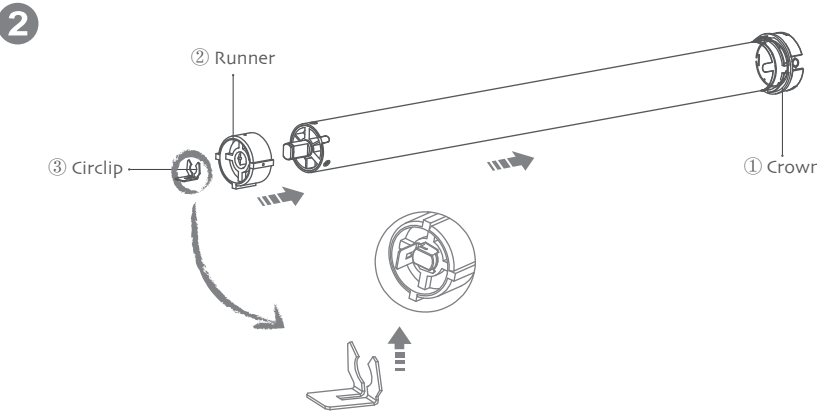
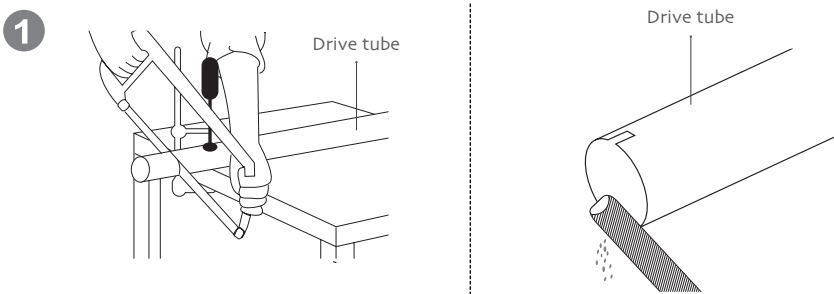


Parameter (More models and parameters are subject to the nameplate)

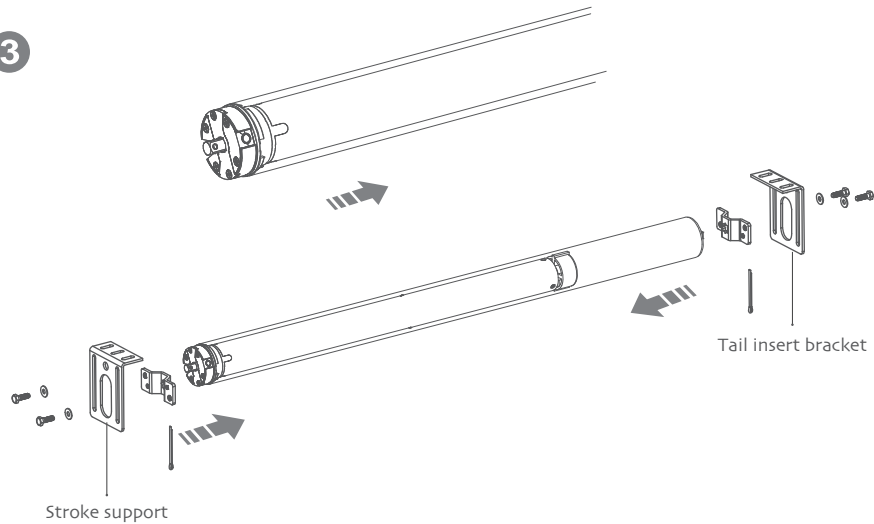
Type	DM35LE-3/28
Rated Torque(N.m)	3N.m
Rated Speed(RPM)	28RPM
Rated Current(A)	2.2A
Rated Voltage(V)	12V
Emission Frequency(MHz)	433-925MHz

Motor installation

- ①Driving tube must be close-fitting with crown and drive adapter.
- ②Choose crown and drive adapter based on the driving tube.

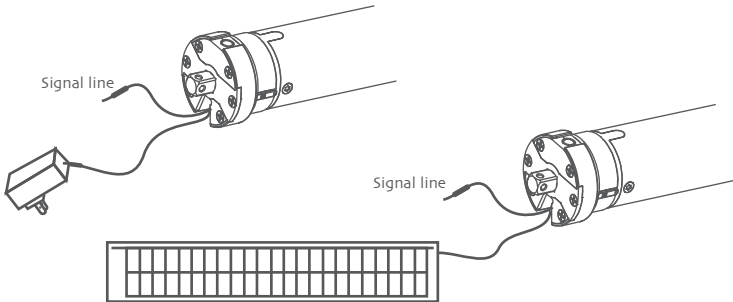


3



Charging instructions

⚠ The motor has a built-in battery,using the charger DC1653 (3.0Nm motor) to recharge.You can also use solar panels DC1289A(B/C) to charge;when the battery is low, insert the charge,charger light shows red light.batteries is full when the red light turns to green.



Operation note

- ⚠ Please read the following precautions before use:
1. Before using for the first time,please charge,ensure a full charge before use.

2. Don't operate motors when low voltage alarm:

①When the power supply voltage is lower than 6.8V, the motor stops running,when the voltage is more than 7.5V to restart.

②When the power supply voltage is lower than 10V,every time the motor is running,start alarm 10 times,tip need to recharge.

3. Operating:

①The valid interval of the emitter button is 10s,the emitter will quit the set after 10s.

②The motor will run or beep for hint,please do the next step after the hint.

4. Set limit position:

①The up/down limit position can't at the same position.

②After limit setting,with power off and memory function.

③Into the match-code status 2 minutes later,it will quit out the setting limits status automatically.

④It will delete every memory and restore the factory settings.

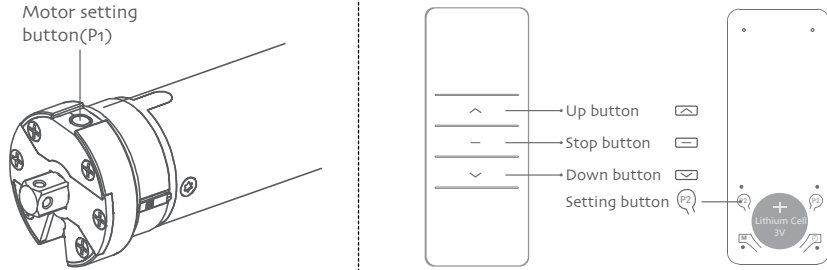
5. When the motor running without any operation, the maximum running time is 6 minutes,it will stop automatically.

6. If the emitter lost,new emitter can through the code way to add emitter quickly and retain the limit.
-

DC Tubular Motor- DM35LE-3/28 Specification(A-02)



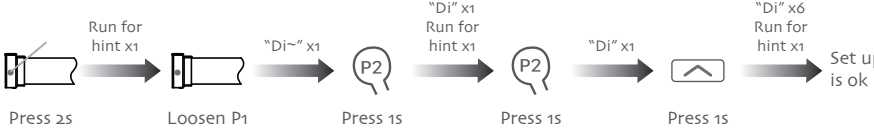
Button specification



1 Setting up

P2→P2→Up

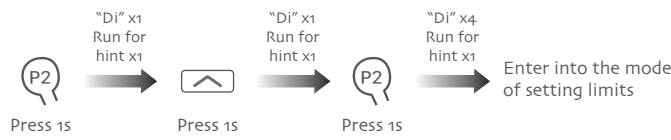
If you need to reverse the rotateon of the motor controlled by the emitter,please run the reverse of direction setting.



2 Limit position setting

1, Enter the limit position setting mode

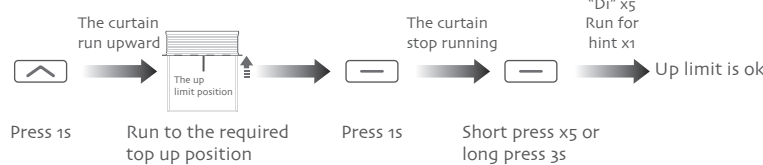
P2→Up→P2



Note: In the process of motor running upward or downward,press the emitter setting button,the motor enters the stepping operation state,can precisely set the limit position,press the setting button again to exit the stepping mode.

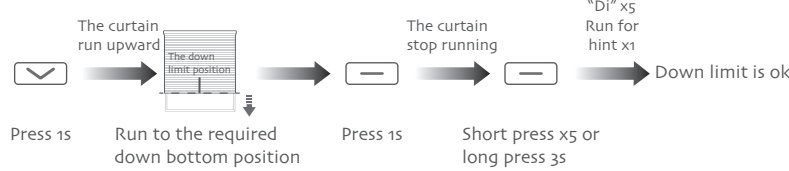
2, Set the up limit position

Up→Stop→Stop



3, Set the down limit position

Down→Stop→Stop



Note:The motor power off,then re-power on,the motor will exit the limit settings mode;Unfinished limit setting withdrew from limiy position setting mode, if setting before have limit then continue to use the previous limit.

3 Preferred stop position

P2→Stop→Stop

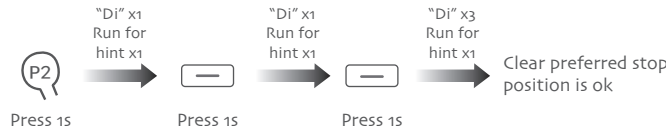
1, Set preferred stop position

After the up limit and down limit setting, you can set preferred stop position between them as the half open position.



Note: Continuous moving mode,long press stop button,the curtain run directly from the current position to preferred stop position(Apply to the shade); Jog-move mode,long press stop button,The motor will first run to the down limit position,then run to preferred stop position(Apply to venetian blinds).

2, Clear preferred stop position



4 Jog-move/continuous moving setting

P2→Up→Down

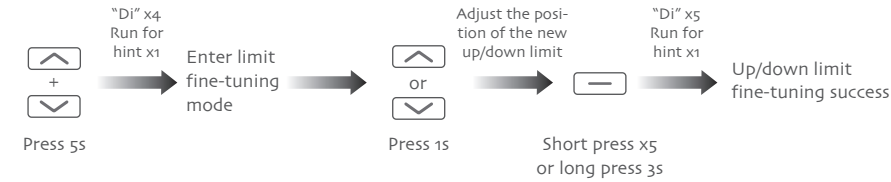


Note: Repeat this operation to cancel jog-move function;In the jog-move mode,short press up/down burron 2s to loosen,the motor is jog-move to run;if long press more than 2s, the motor run continuously.

5 Fine-tuning the up/down limit position

Up+Down→Up/Down→Stop

Run the curtain to the up/down limit to perform the following operations.

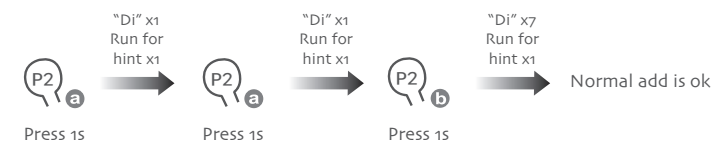


Note: After the fine-tuning is successfully adjusted, the original preferred stop position will be automatically deleted. If the fine-tuning is unsuccessful, the original limits will still be applied.

6 Add emitter

Method one:Normal add

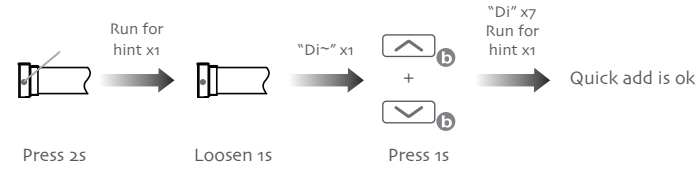
P2 a→P2 a→P2 b



Note: Emitter a is the one already matched code, while emitter b has not.

Method two:Quick add

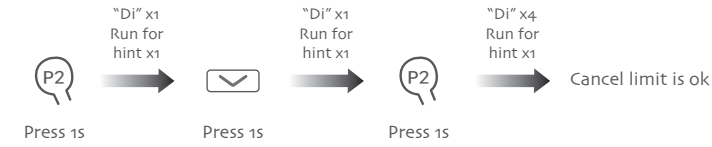
(Up+Down) b



Note: Emitter b has not matched code,need to add the emitter;After the success of added emitter,all of the original motor settings are retained.

7 Cancel limit

P2→Down→P2

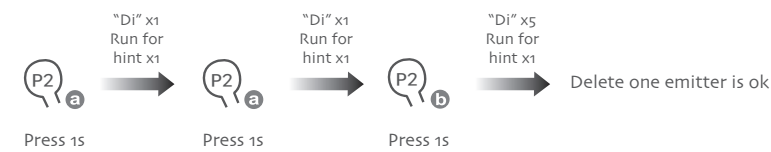


Note: This operation together with the preferred stop position to delete.

8 Delete emitter

1, Delete one emitter

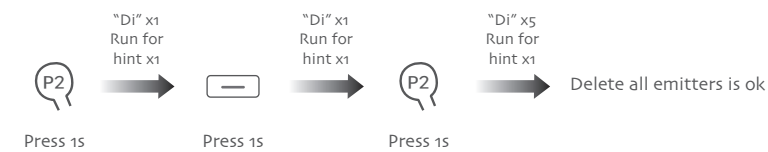
P2 a→P2 a→P2 b



Note: a b are all of the code emitters,this method only can delete the emitter b not the emitter a

2, Delete all emitters

P2→Stop→P2



Note: After the success of delete emitter to retain all the settings of the original motor.

Motor P1 button operation

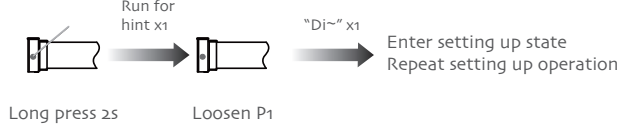
1, Short press operation



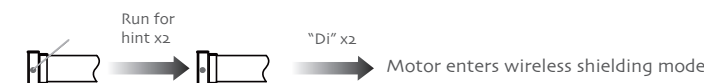
Short press P1

Note: This operation should be carried out under the conditions of motor has the limit.

2, Setting up or add emitter



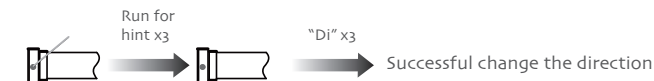
3, Wireless shielding mode



Long press 6s Loosen P1

Note: after entering the wireless shield mode, the motor can not be controlled by the emitter, and the wireless reception function can be restored by pressing the P1 button.

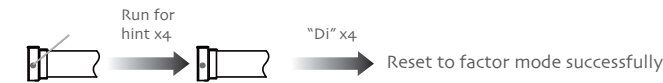
4, Switch direction



Long press 10s Loosen P1

Note: After the success of the reversing,retain all motor original settings.

5, Reset to factor mode



Long press 14s Loosen P1

Note:After the Reset to factor mode,will delete all previous system function setting and the emitter code.

Fault and solution

NUMBER	PHENOMENON	REASON	PROCESSING METHOD
1	The motor is not running	a, The battery is not activated. b, The emitter is not matched. c, If press P1 button for a long time while with no reaction,may be the power is short-ciralt or the ciralit board or the motor is broken.	a, Activate the motor after fully charged b, Setting up the match code c, Contact the engineers for after-sales