

128克铜版纸 彩色印刷 成品尺寸：90*240mm 风琴折



Mi·Light®

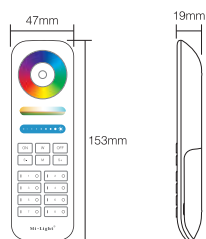
Model No.: FUT089
8-Zone RGB+CCT Remote Controller

Product Features

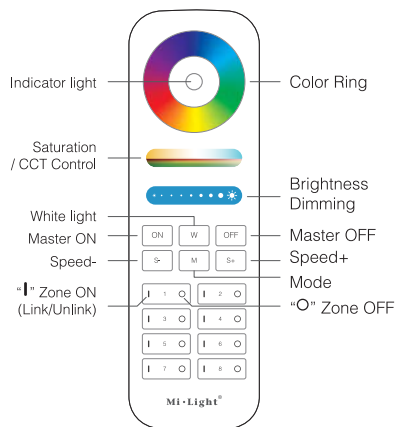
This product adopt world-wide used 2.4GHz frequency, GFSK control method, with the features of low power consumption, long distance transmitting, strong anti-interference and fast communication rate; can control specified Mi-Light smart light with color, color temperature, saturation and brightness changing.

Technical Parameters

Model No.: FUT089
Voltage: 3V(AAA * 2PCS)
Transmitting Power: 6dBm
Standby Power Consumption: 15uA
Transmission Frequency: 2400-2483.5MHz
Modulation Method: GFSK
Control Distance: 30m
Size: 153mm*47mm*19mm



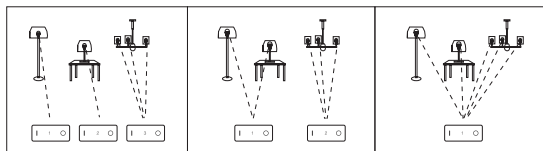
Products Key Diagram



- Touch the color ring to change colors.
- Under white light mode, adjust color temperature; Under color light mode, change color saturation.
- Slide the brightness slider to adjust the brightness.
- Press the button to get white light.
- Touch ON button, turn on the linked device.
- Touch OFF button, turn off the linked device.
- Dynamic mode switching button.
- Lower the dynamic mode speed.
- Accelerate the dynamic mode speed.

Grouping of several lights

You can add an endless numbers of lights to a zone on the 8 channel remote by linking the lights to different zones. This way you are completely flexible in creating different group combinations. Below you can see some grouping examples.



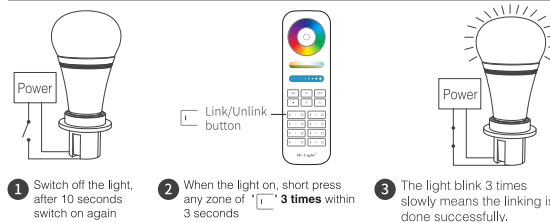
Remark:

- The user can re-programme freely as needed. One remote can control countless lamps or controllers, but one lamp or controller can only be controlled by four remotes (Max).
- Please check the battery installation and controller (totally discharge the power), when you programme after switching off and switching on.

Linking&Unlinking

Remark: The light can be working after linking with the remote controller.

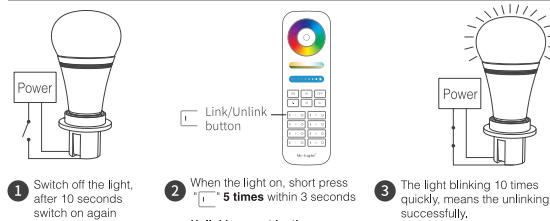
Linking Instructions



- Switch off the light, after 10 seconds switch on again
- When the light on, short press any zone of 'I' 3 times within 3 seconds
- The light blink 3 times slowly means the linking is done successfully.

⚠ If the light not blink slowly, the linking failed, pls switch off the light again, and follow the above steps again.

Unlinking Instructions



- Switch off the light, after 10 seconds, switch on again
- When the light on, short press "I" 5 times within 3 seconds
- The light blinking 10 times quickly, means the unlinking successfully.

Unlinking must be the same zone with the Linking

⚠ If the light not blink quickly, the unlink failed, pls switch off the light again, and follow the above steps to unlink again.

Attention

- 8-zone remote controller only control specified Mi-Light products; not all Mi-Light series can work on this remote controller.
- In the using of the remote, if the indicated lamp blinking quickly, pls change the battery in time.
Pls don't use poor quality battery to avoid the leaking of battery liquid to damage the remote controller.
- Please keep your finger off the touch ring when installing the batteries, to improve its sensitivity, and use the remote (3 seconds later) after the batteries are installed. Please reinstall the batteries, if the touch ring is found low-sensitivity.
- This 2.4GHz remote control system is precise electronic product; don't use it in humid, high temperature, dust and high voltage environment; Saving it at indoor, dry and no static electricity environment.
- Pls don't use the remote controller on the wide-range metal or strong electromagnetic wave area, otherwise, it will badly affect the controlling distance.



Warning

changes or modifications not expressly approved by the party responsible for compliance could void the user's authority to operate the equipment. This device complies with Part 15 of the FCC Rules. Operation is subject to the following two conditions: (1) this device may not cause harmful interference, and (2) this device must accept any interference received, including interference that may cause undesired operation. changes or modifications not expressly approved by the party responsible for compliance could void the user's authority to operate the equipment.

NOTE: This equipment has been tested and found to comply with the limits for a Class B digital device, pursuant to Part 15 of the FCC Rules. These limits are designed to provide reasonable protection against harmful interference in a residential installation. This equipment generates, uses and can radiate radio frequency energy and, if not installed and used in accordance with the instructions, may cause harmful interference to radio communications. However, there is no guarantee that interference will not occur in a particular installation. If this equipment does cause harmful interference to radio or television reception, which can be determined by turning the equipment off and on, the user is encouraged to try to correct the interference by one or more of the following measures:

Reorient or relocate the receiving antenna

Increase the separation between the equipment and receiver.

Connect the equipment into an outlet on a circuit different from that to which the receiver is connected.

- Consult the dealer or an experienced radio/TV technician for help.

NOTE: This device and its antenna(s) must not be co-located or operation in conjunction with any other antenna or transmitter